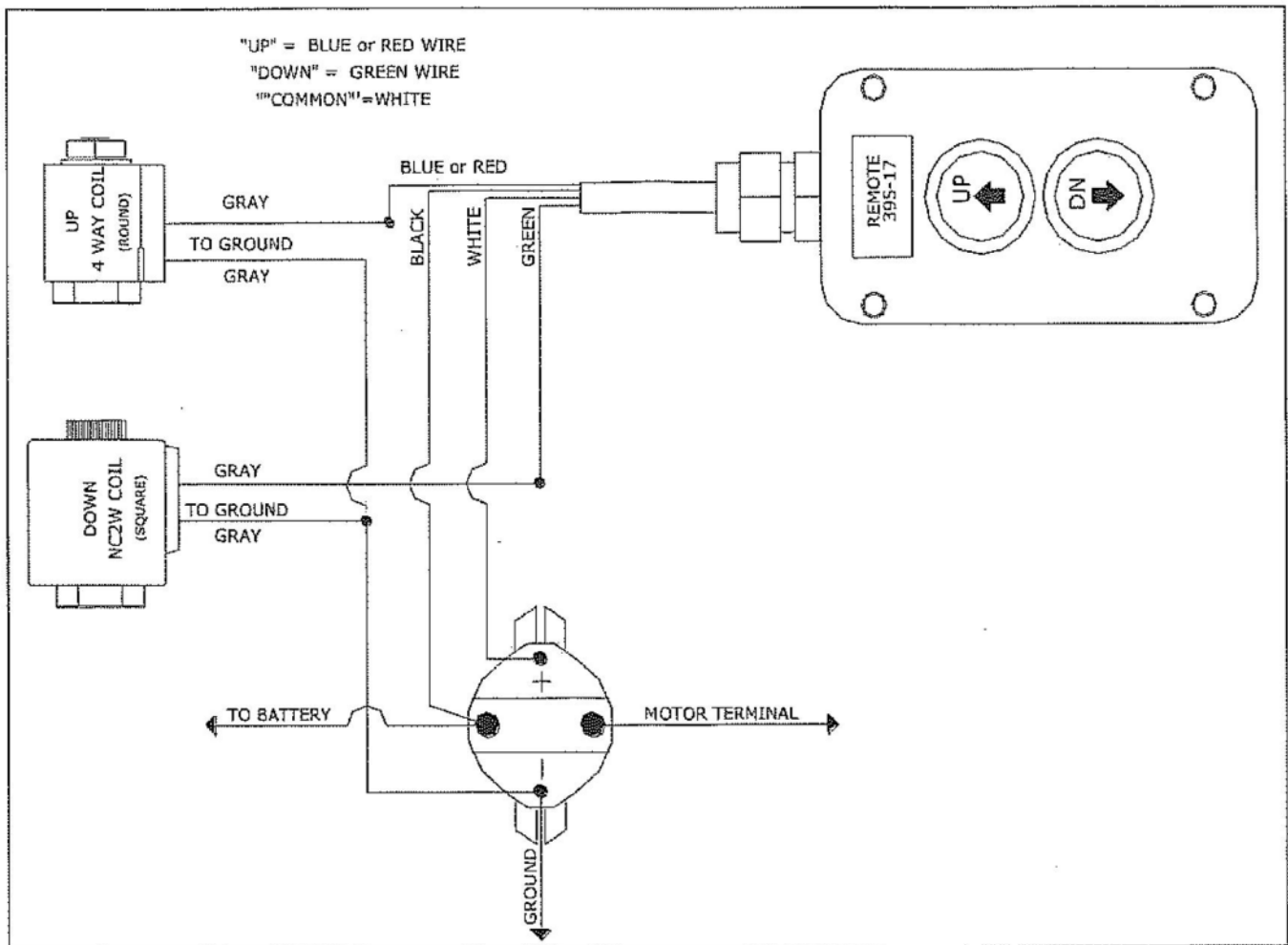


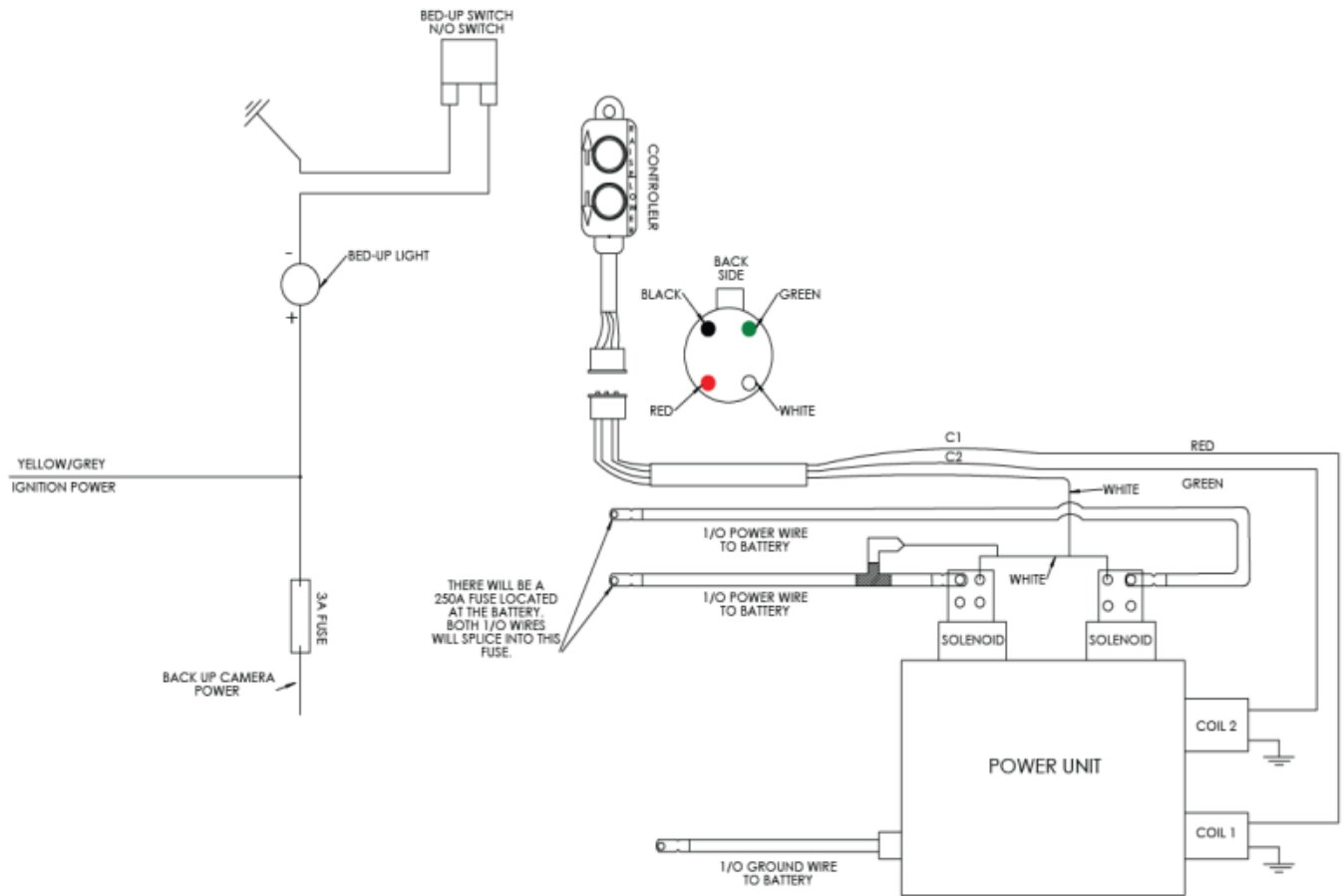
Table of Contents

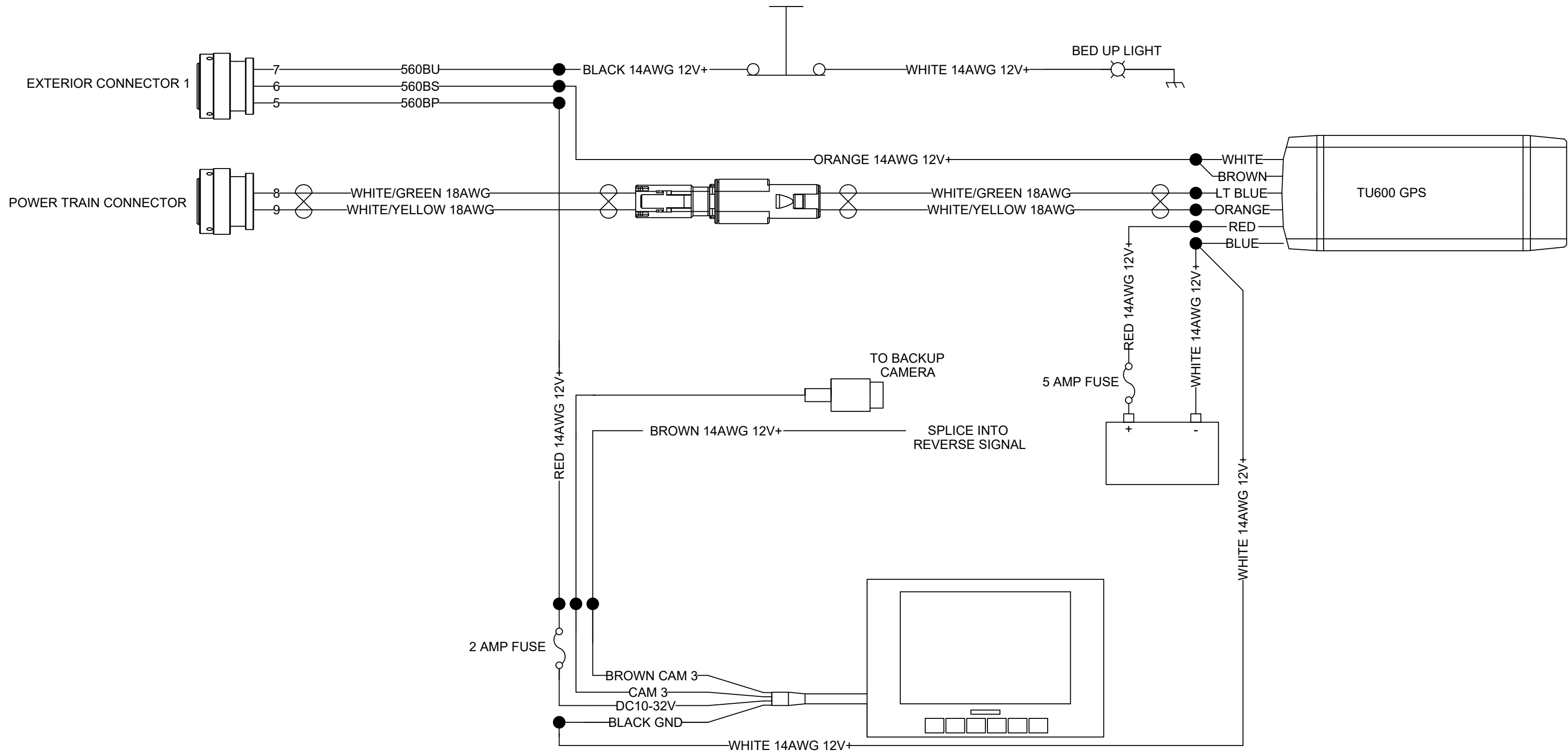
Schematics

3/6 Yard Double Acting Wiring Diagram Sheet 1	2
3/6 Yard Double Acting Wiring Diagram Sheet 2	3
13 Yard Herc Freightliner Wiring Diagram	4
Joystick Air Lines Sheet 1	5
Joystick Air Lines Sheet 2	6
Joystick Air Lines Sheet 3	7
3/6 Yard Ford F750/650 Wiring Diagram	8
13 Yard International Sheet 1	9
13 Yard International Sheet 2	10
13 Yard International Sheet 3	11

Double Acting Wiring Diagram



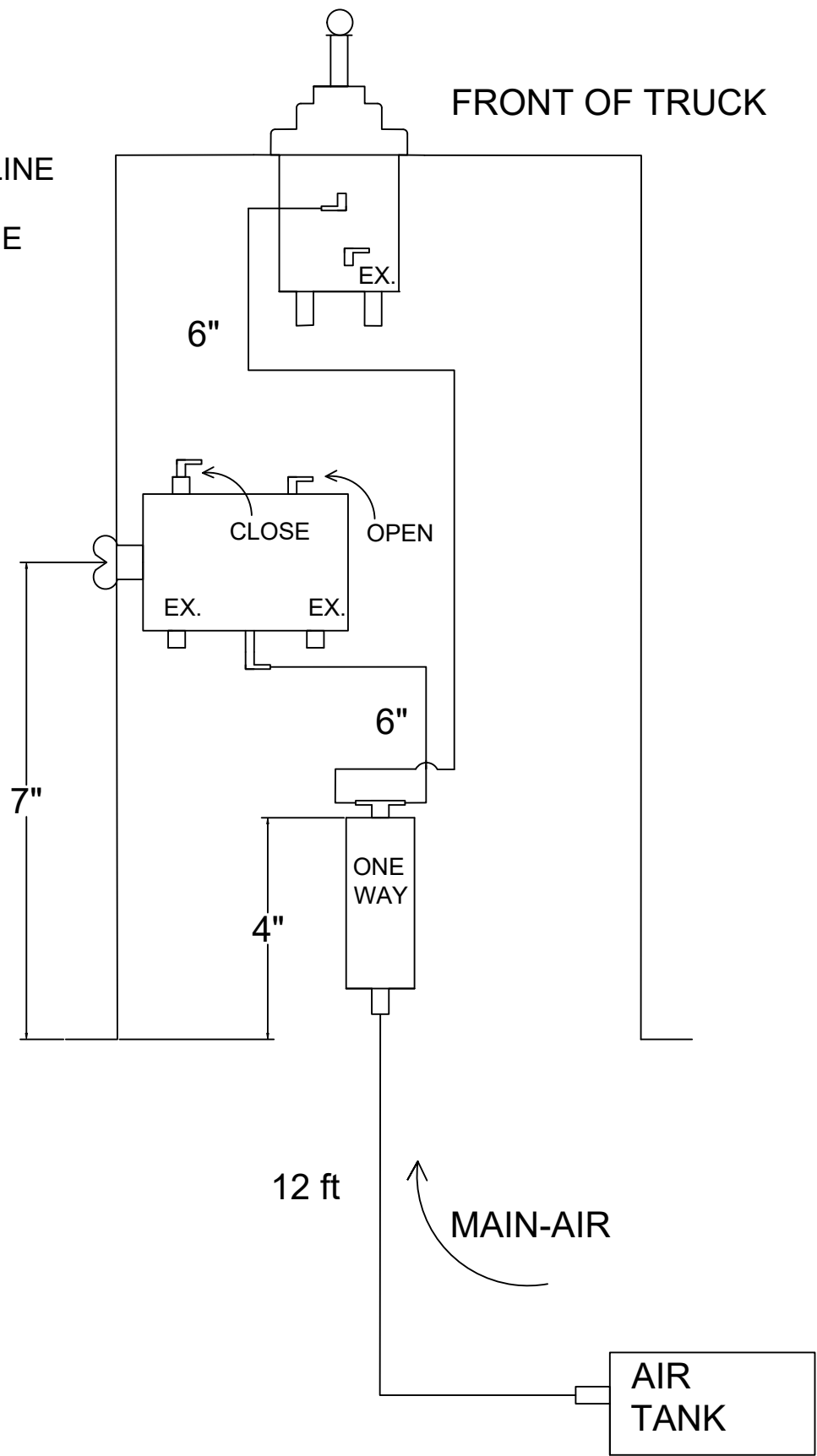





TITLE: HERC 13 YARD FREIGHTLINER WIRING		DATE 11/18/24
SIZE	DRAWING NO. 2187-1055	REV 0
SCALE: NTS	DRAWN BY: JS	SHEET 1 OF 1

NOTES:
REFERENCE DOCUMENT:
-BUILD CABLE HARNESS IN ACCORDENCE WITH
IPC-620 OR EQUIVALENT

- 1. CLOSE IS CONNECTED TO CLOSE IN SHEET 3 WITH A 25 FT ¼ AIR LINE
- 2. OPEN IS CONNECTED TO OPEN IN SHEET 3 WITH A 25 FT ¼ AIR LINE
- 3. 80 FT OF LINE TOTAL
- 4. 6" HOSE GOING FROM ONE WAY TO JOY STICK TUCKS BEHIND PRESSURE CONTROLER





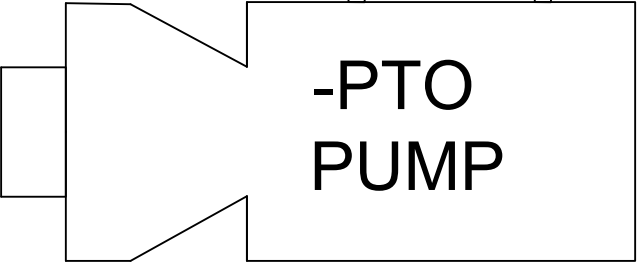
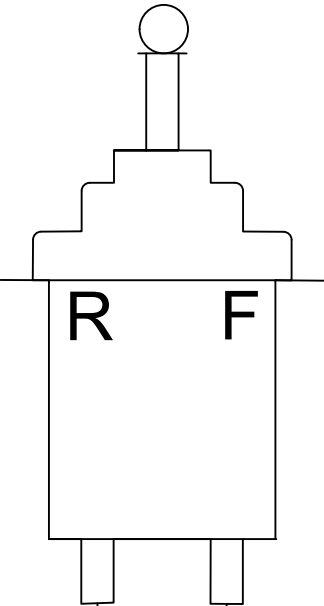
TITLE: JOYSTICK DUMP AIR LINES		DATE 6/20/25
SIZE	DRAWING NO. 2187-1083	REV 0
SCALE: NTS	DRAWN BY: CP	SHEET 1 OF 3


LIMIT SWITCH

8 ft

8 ft

8 ft



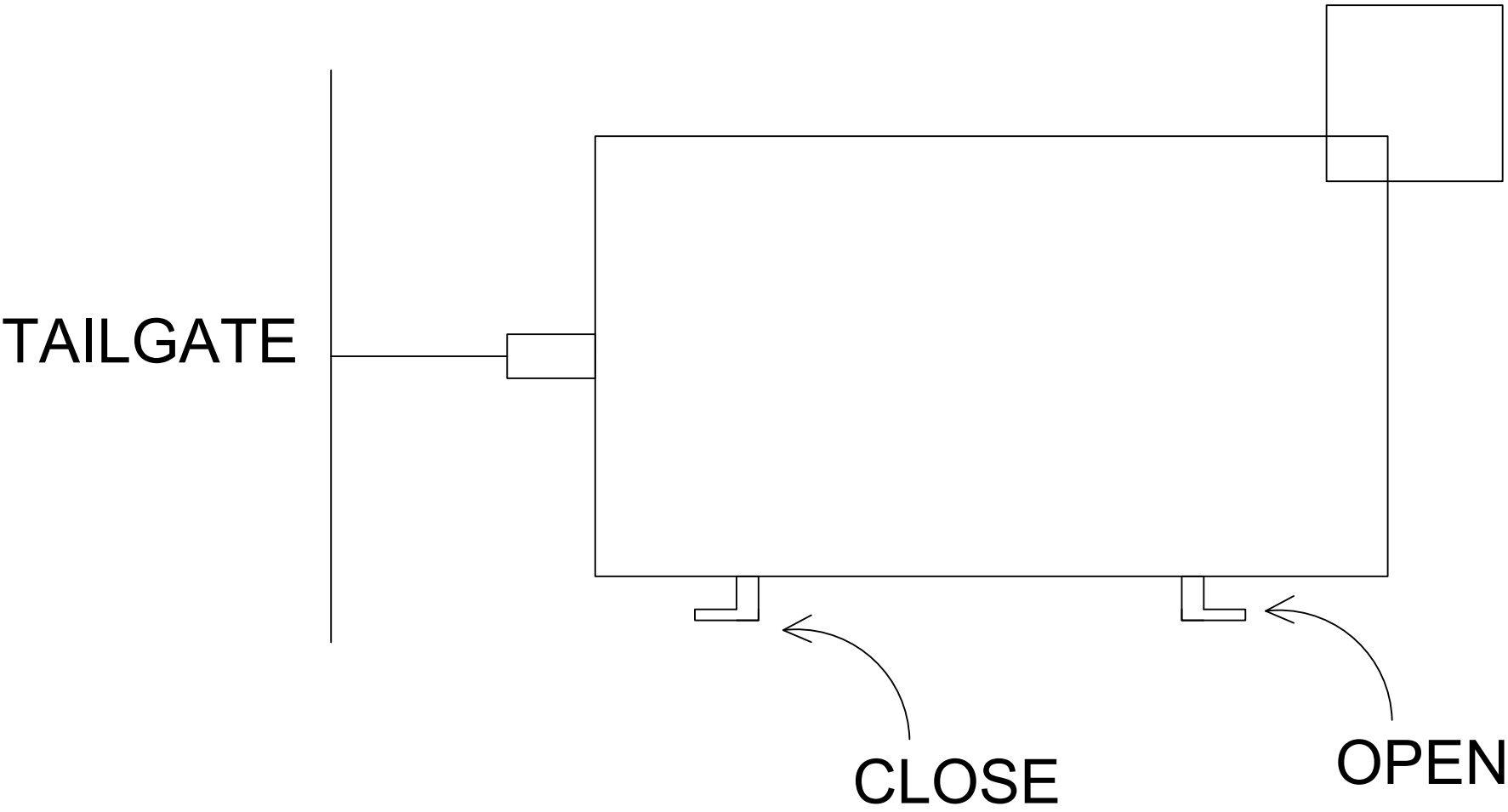



TITLE: JOYSTICK DUMP AIR LINES		DATE 6/20/25
SIZE	DRAWING NO. 2187-1083	REV 0
SCALE: NTS	DRAWN BY: CP	SHEET 2 OF 3

NOTES:
REFERENCE DOCUMENT:
-BUILD CABLE HARNESS IN ACCORDENCE WITH
IPC-620 OR EQUIVALENT

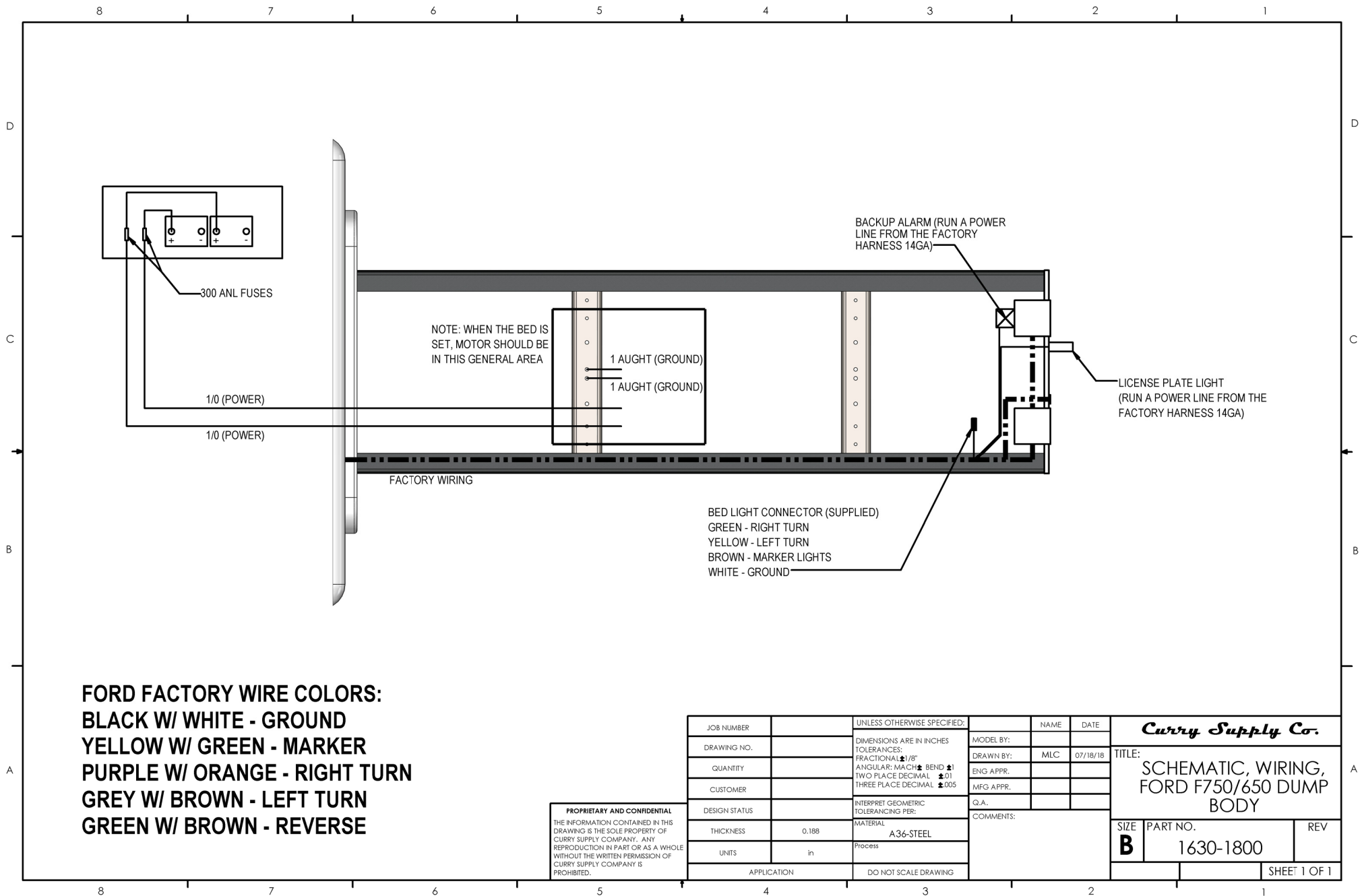
- 1 CLOSE IS CONNECTED TO CLOSE IN SHEET 1 WITH A 25 FT ¼ AIR LINE
- 2. OPEN IS CONNECTED TO OPEN IN SHEET 1 WITH A 25 FT ¼ AIR LINE

REAR OF TRUCK

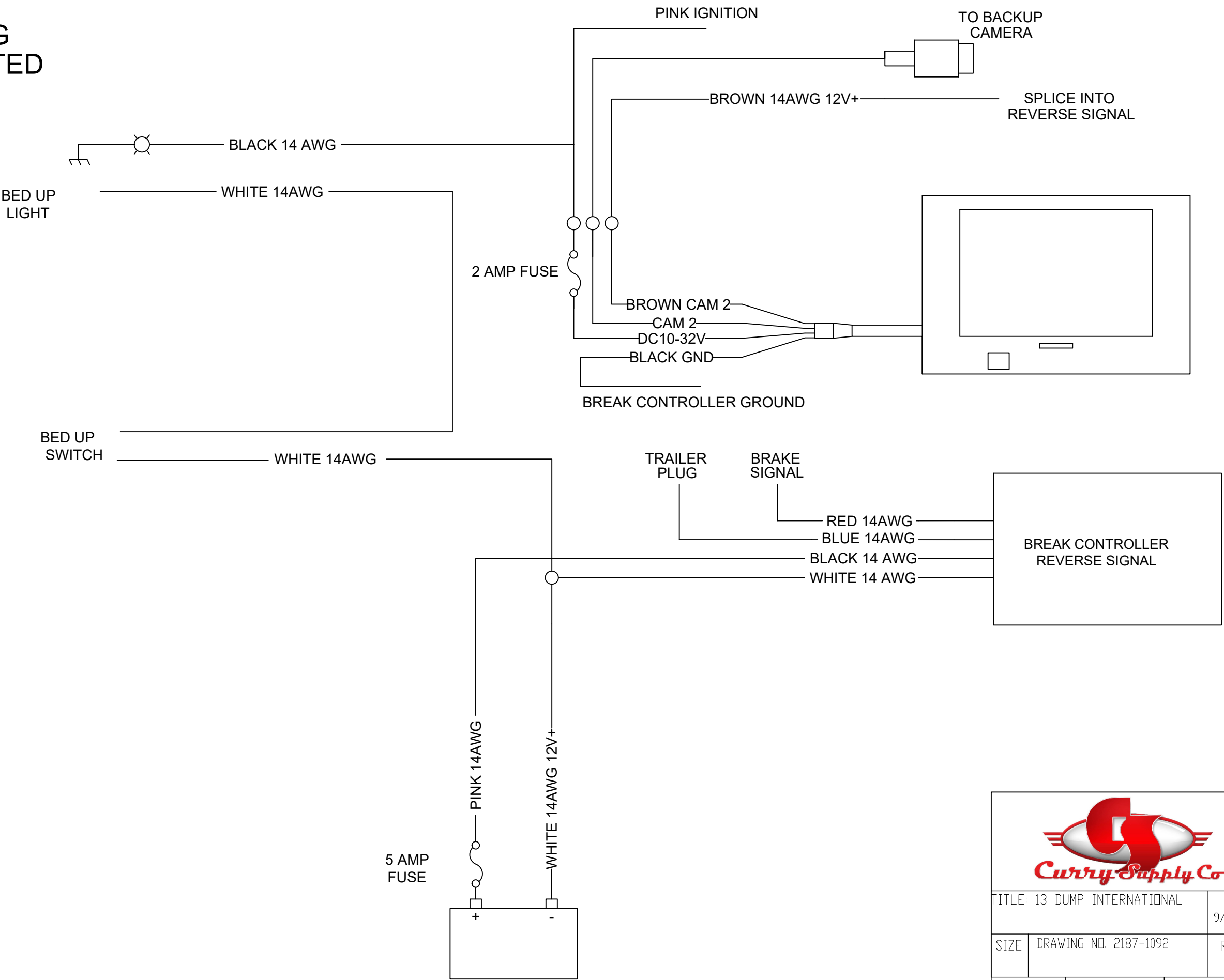




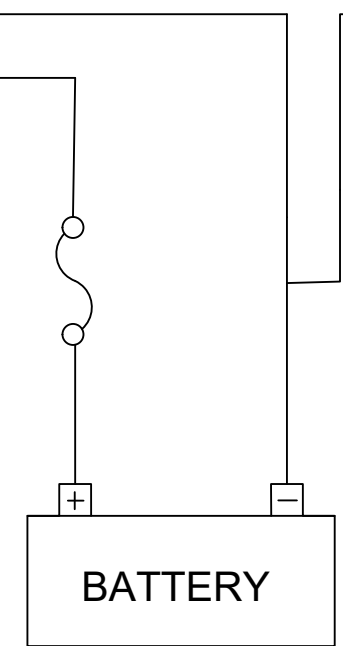
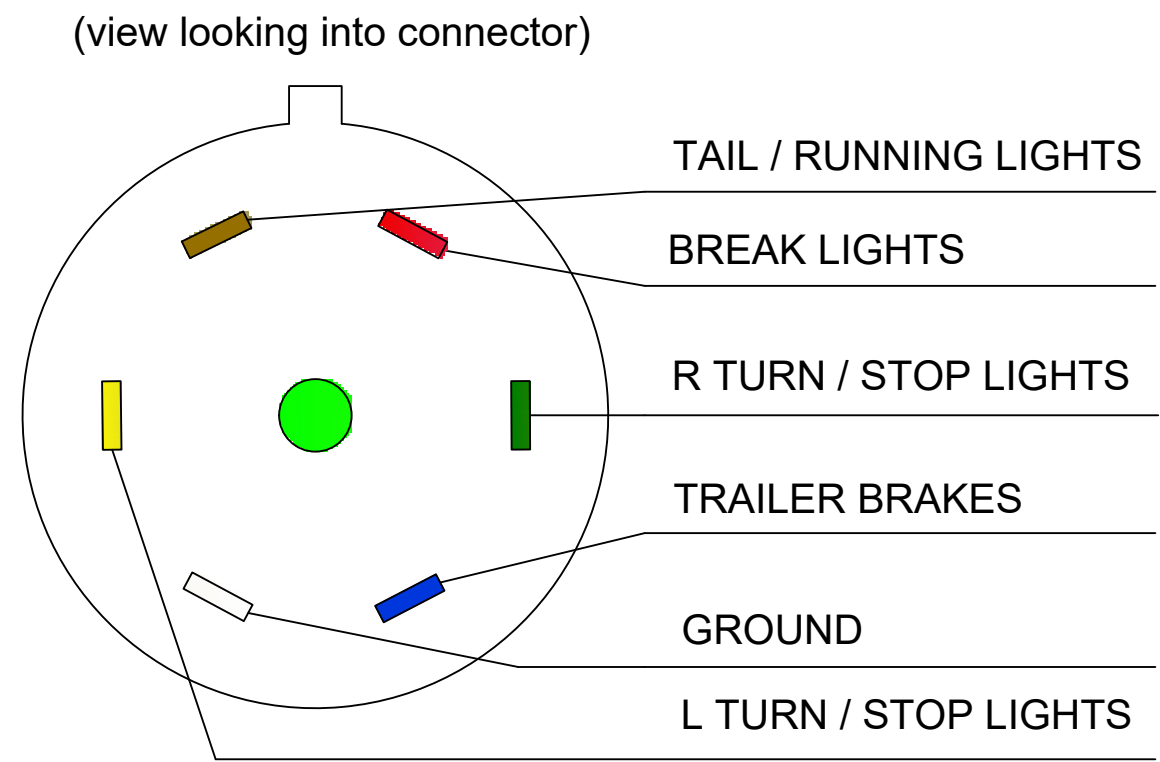
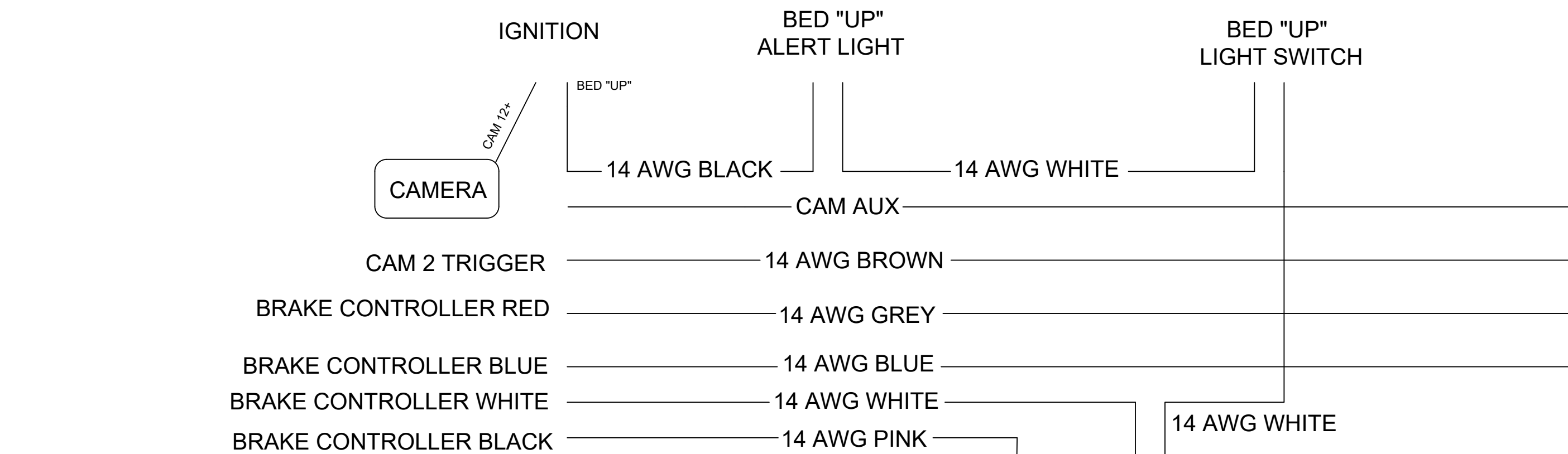
TITLE: JOYSTICK DUMP AIR LINES		DATE 6/20/25
SIZE	DRAWING NO. 2187-1083	REV 0
SCALE: NTS	DRAWN BY: CP	SHEET 3 OF 3




GPS GETS PLUGGED IN
UNDERNEATH STEERING
WHEEL PANEL FOR UNITED



TITLE: 13 DUMP INTERNATIONAL		DATE 9/29/25
SIZE	DRAWING NO. 2187-1092	REV 0
SCALE: NTS	DRAWN BY: TK	SHEET 1 OF 3

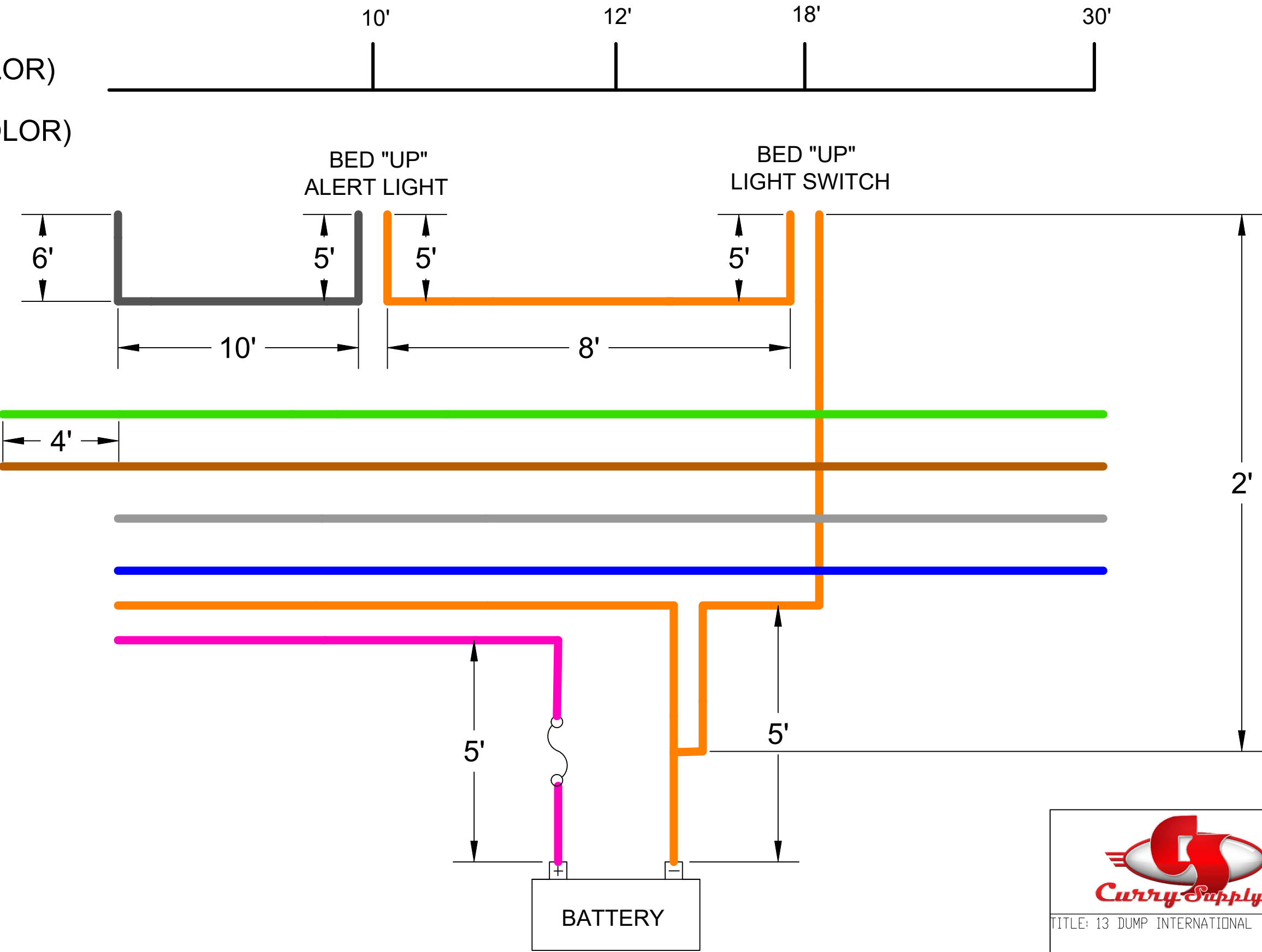





TITLE: 13 DUMP INTERNATIONAL		DATE 9/29/25
SIZE	DRAWING NO. 2187-1092	REV 0
SCALE: NTS	DRAWN BY: TK	SHEET 2 OF 3

WIRE LENGTHS

- 35' WHITE (ORANGE COLOR)
- 34" BROWN
- 34' CAM AUX (GREEN COLOR)
- 30' GREY
- 30' BLUE
- 21' BLACK
- 19' PINK





TITLE: 13 DUMP INTERNATIONAL		DATE 9/29/25
SIZE	DRAWING NO. 2187-1092	REV 0
SCALE: NTS	DRAWN BY: TK	SHEET 3 OF 3