

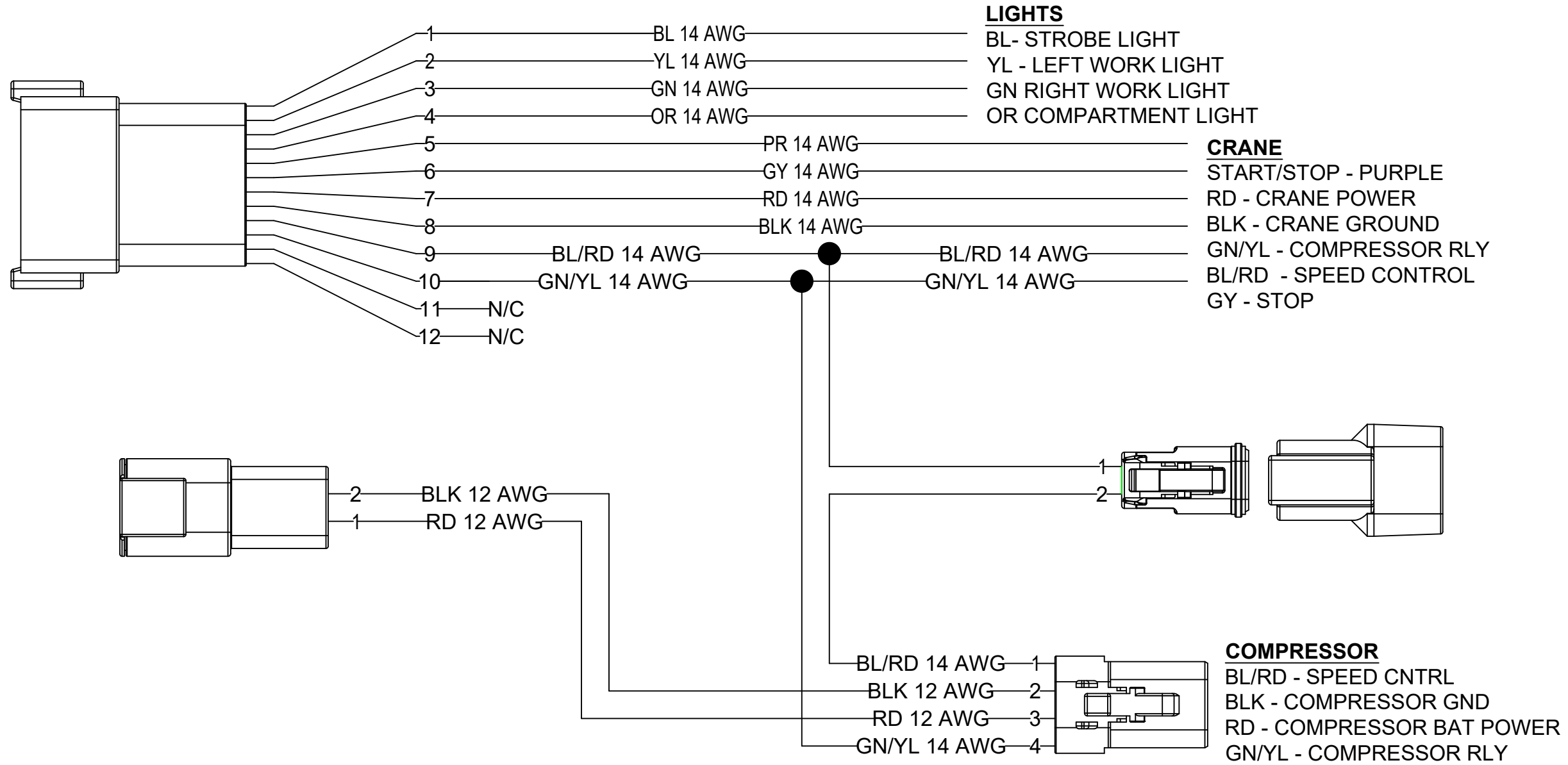
Mechanic Trucks

Schematics

Wilcox Body Harness 2187-1037	Page 2
Wilcox Body Harness 2187-1037	Page 3
Peterbilt 2023 PTO Speed Control 2187-1034	Page 4
Peterbilt 2023 PTO Speed Control 2187-1034	Page 5
Peterbilt 2023 PTO Speed Control 2187-1034	Page 6
Ford 2023+ Stellar Crane Wilcox Body 2187-1033	Page 7
Ford 2023+ Stellar Crane Wilcox Body 2187-1033	Page 8
Ford 2023+ Stellar Crane Wilcox Body 2187-1033	Page 9
Ford 2023+ Stellar Crane Wilcox Body 2187-1033	Page 10
Ram 2023 Stellar Crane Wilcox Body 2187-1036	Page 11
Ram 2023 Stellar Crane Wilcox Body 2187-1036	Page 12
Ram 2023 Stellar Crane Wilcox Body 2187-1036	Page 13
Mack 2024 Mechanic 2187-1076	Page 14
Mack 2024 Mechanic 2187-1076	Page 15
Mack 2024 Mechanic 2187-1076	Page 16

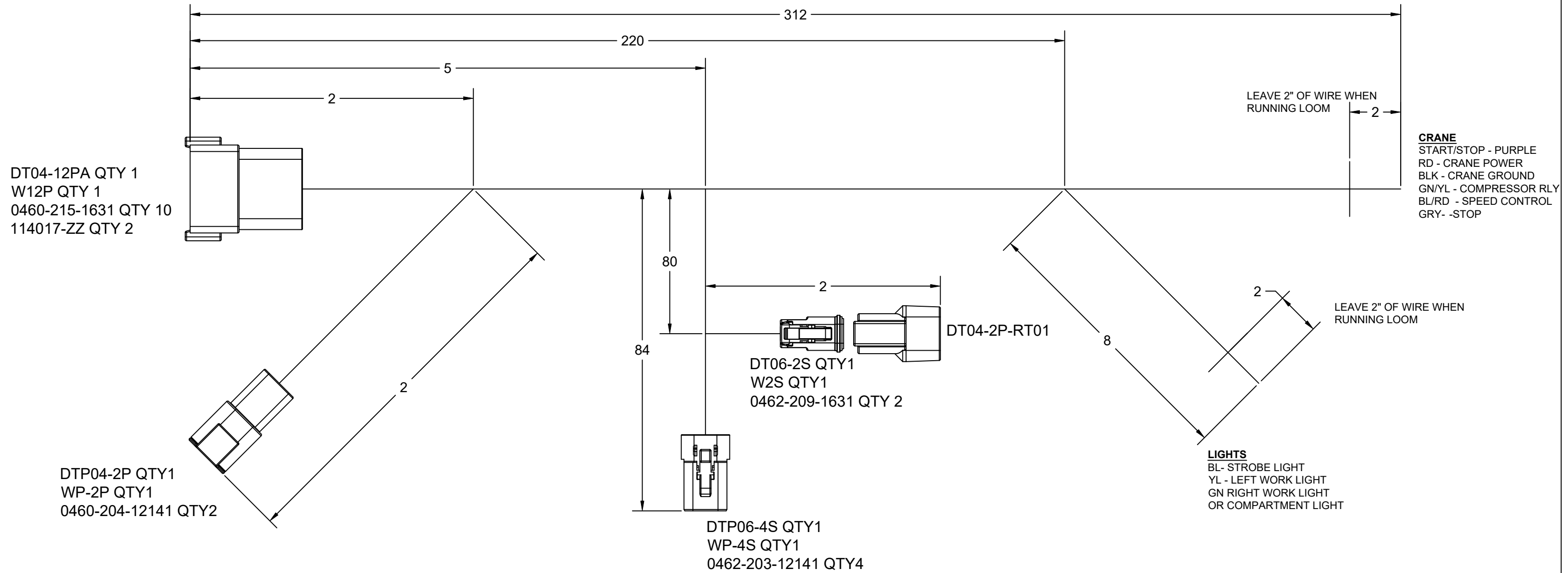
CAUTION

PLEASE CONTACT CURRY SUPPLY COMPANY BEFORE ATTEMPTING ANY CHANGES TO THE ELECTRICAL SYSTEMS. DOING SO MAY CAUSE EQUIPMENT DAMAGE OR VOID WARRANTY.



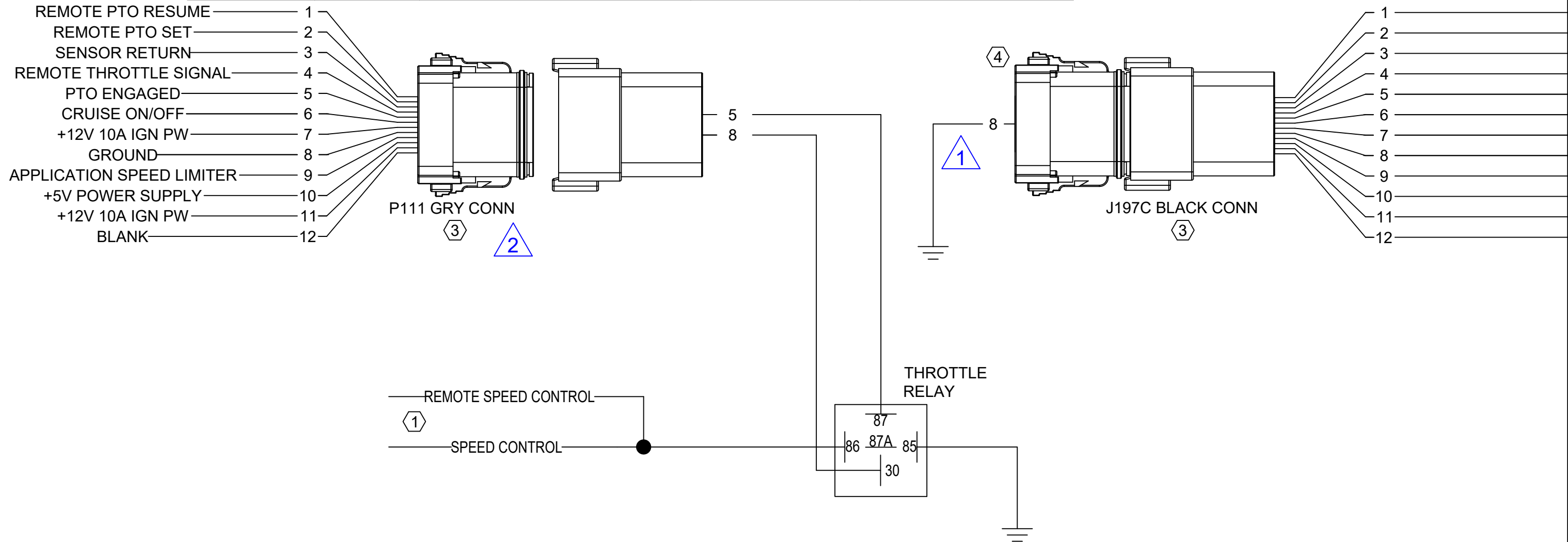
TITLE: WILCOX BODY HARNESS		DATE 2/20/24
SIZE	DRAWING NO. 2187-1037	REV 0
SCALE: NTS	DRAWN BY: JS	SHEET 1 OF 2

HARNESS IS TO BE LOOMED



TITLE: WILCOX BODY HARNESS		DATE 2/20/24
SIZE	DRAWING NO. 2187-1037	REV 0
SCALE: NTS	DRAWN BY: JS	SHEET 2 OF 2

REVISION TABLE				
ZONE	REV	DESCRIPTION	DATE	APPROVED
	1	ADDED GROUND WIRE	02/20/2024	JS
	2	CHANGED LABEL	04/17/2024	JS



NOTE:

① THIS IS ASSUMING THIS IS A STELLAR BUILD WITH PDM INSTALLED
IF THERE IS NO PDM ADD DIODE TO SPEED CONTROL

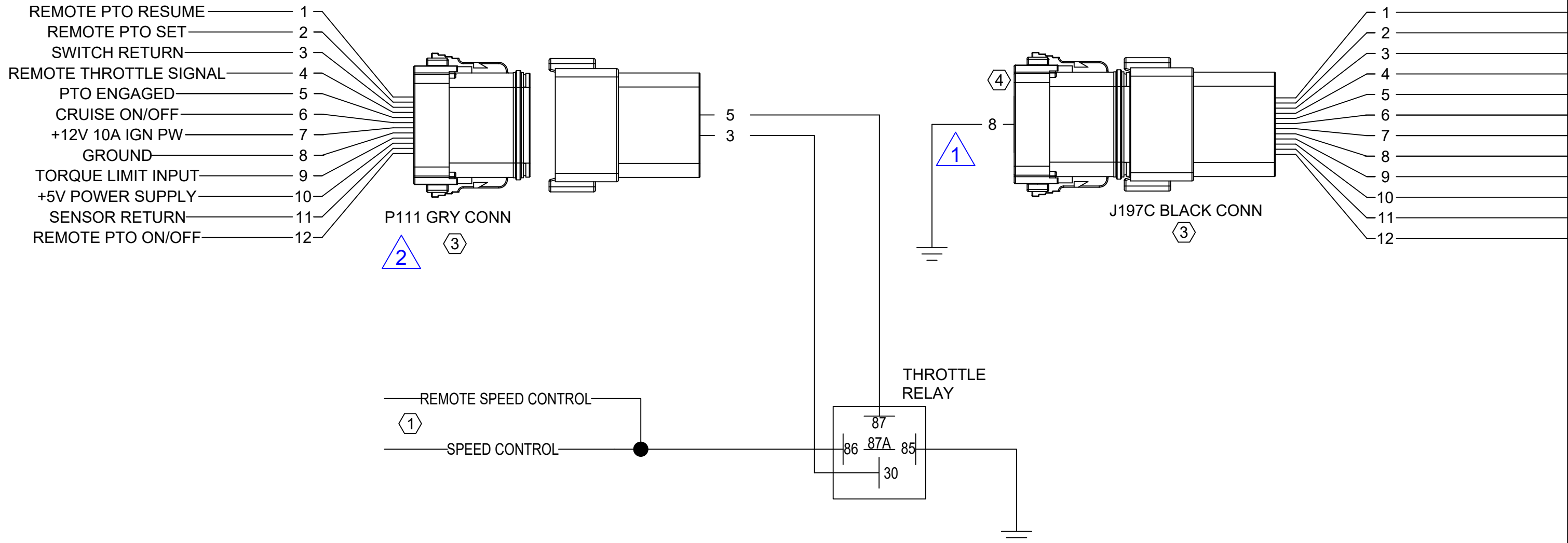
2. THIS SCHEMATIC IS FOR A MX MOTOR ONLY

③ DISCONNECT FACTORY HARNESS LOCATED DRIVER SIDE IN THE ENGINE BAY

④ ADD 12PIN MALE WITH PLUGS



TITLE: PETERBILT PTO SCHEMATIC 2023		DATE 12/5/23
SIZE A3	DRAWING NO. 2187-1034	REV 2
SCALE: NTS	DRAWN BY: JS	SHEET 1 OF 2



NOTE:

1 THIS IS ASSUMING THIS IS A STELLAR BUILD WITH PDM INSTALLED
 IF THERE IS NO PDM ADD DIODE TO SPEED CONTROL WIRE

2. THIS SCHEMATIC IS FOR A CUMMINS MOTOR ONLY

3 DISSCONNECT FACTORY HARNESS LOCATED DRIVER SIDE IN THE ENGINE BAY

4 ADD 12PIN MALE WITH PLUGS



TITLE: PETERBILT PTO SCHEMATIC 2023		DATE 12/5/23
SIZE A3	DRAWING NO. 2187-1034	REV 2
SCALE: NTS	DRAWN BY: JS	SHEET 2 OF 2

ARROW IS
POINTING TO P111
CONNECTOR
LOCATED DRIVER
SIDE ENGINE BAY



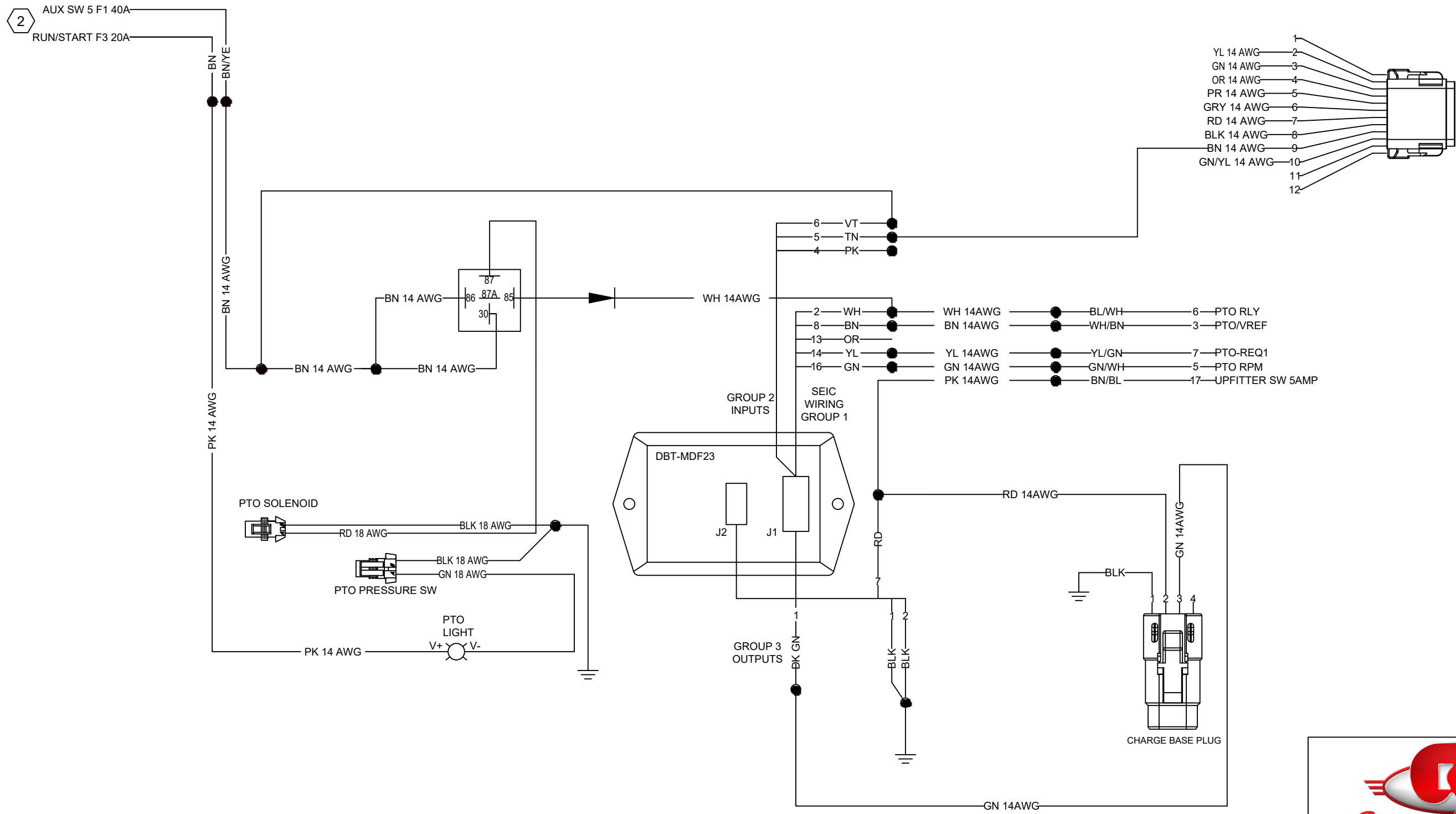

TITLE: PETERBILT PTD SCHEMATIC 2023		DATE 12/5/23
SIZE A3	DRAWING NO. 2187-1034	REV 2
SCALE: NTS	DRAWN BY: JS	SHEET 2 OF 2

NOTES:

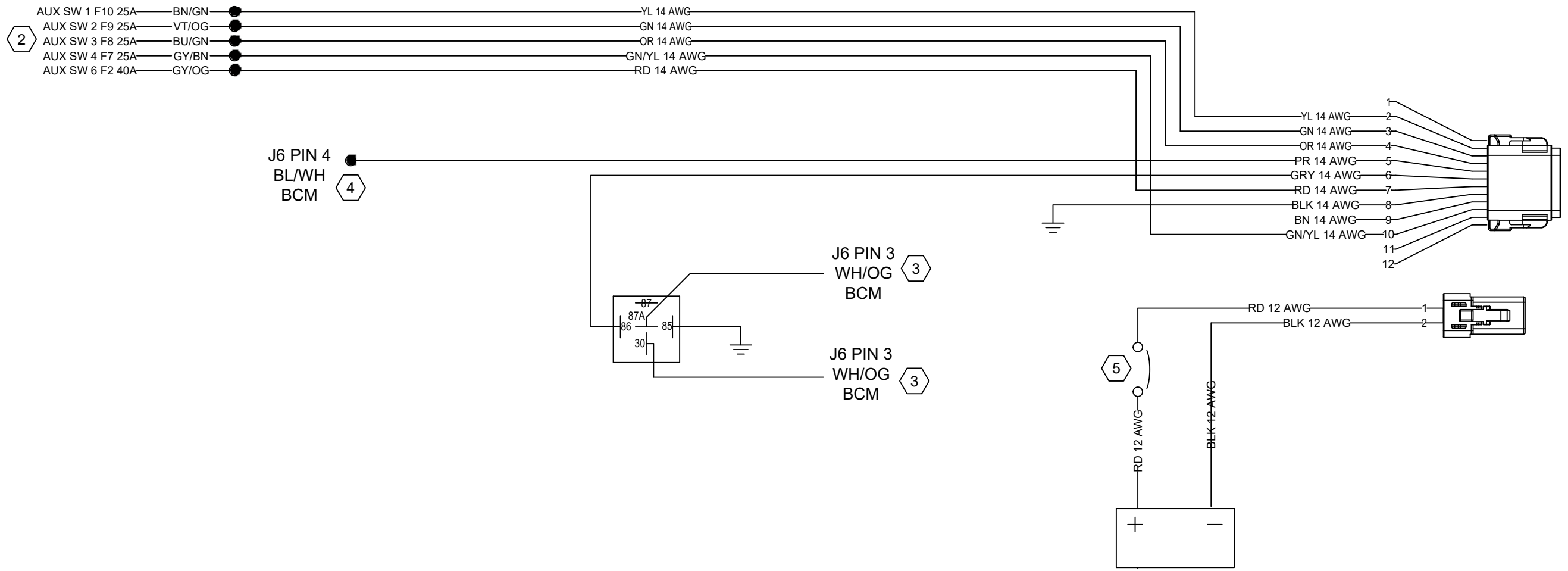
- 1 LOCATION OF SEIC WIRES ARE PASSENGERSIDE KICK PANEL
- 2 LOCATION OF UPFITTER SWITCH WIRES AND RUN/START IGNITION IS LOCATED PASSENGER SIDE ENGINE COMPARTMENT
- 3 START STOP WIRES ARE LOCATED PASSENGERSIDE KICK PANEL REMOVE J6 CONNECTOR AND LOCATE PIN 3 (STOP) AND BREAK THE CONNECTION AND TIE EACH SIDE TO THE RLY SHOWN RLY SHALL BE LOCATED PASSENGERSIDE KICK PANEL
- 4 REMOVE J6 CONNECTOR AND LOCATE PIN 4 (START) SPLICE PR 14AWG SPLICE PR 14AWG DIRECTLY TO PIN 4 (START)
- 5 USE BREAKER THAT COMES WITH COMPRESSOR



TITLE: STELLAR CRANE/COMP 2023+ FORD WILCOX		DATE 11/07/24
SIZE	DRAWING NO. 2187-1033	REV 0
SCALE: NTS	DRAWN BY: JS	SHEET 1 OF 4

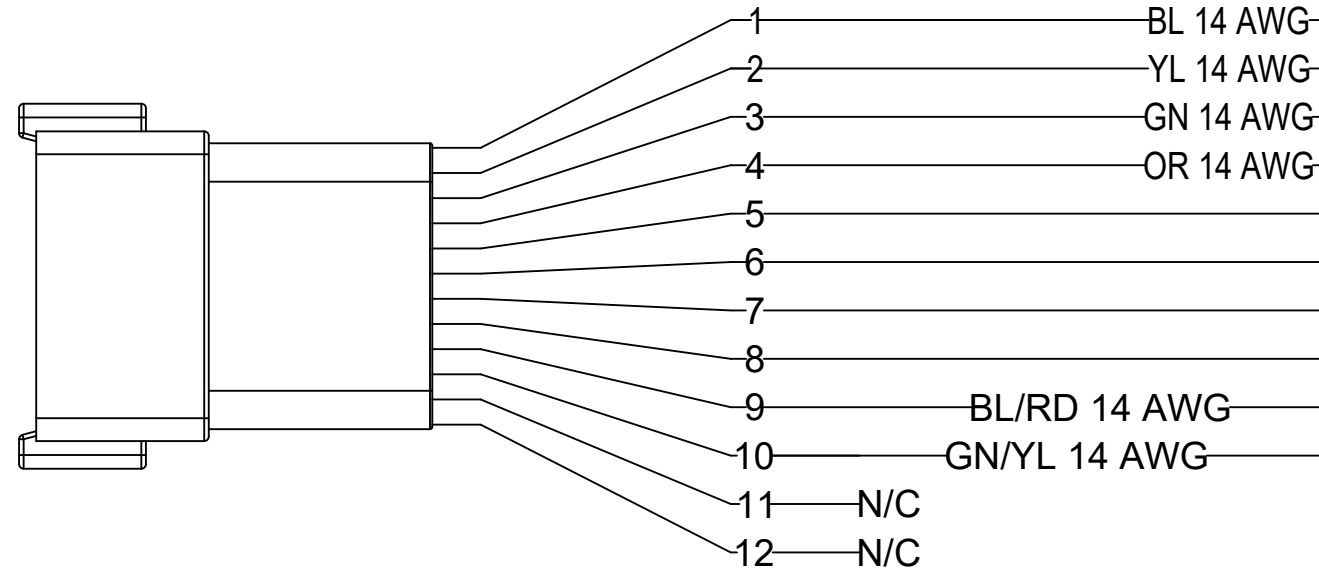



TITLE: STELLAR CRANE/COMP 2023+ FORD WILCOX		DATE 11/07/24
SIZE	DRAWING NO. 2187-1033	REV 0
SCALE: NTS	DRAWN BY: JS	SHEET 2 OF 4



TITLE: STELLAR CRANE/COMP 2023+ FORD WILCOX		DATE 11/07/24
SIZE	DRAWING NO. 2187-1033	REV 0
SCALE: NTS	DRAWN BY: JS	SHEET 3 OF 4

BED WIRING

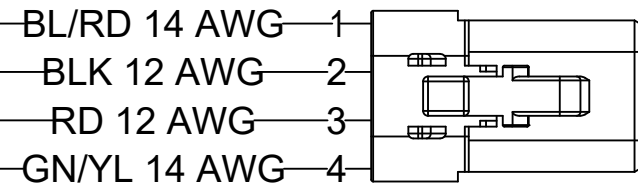
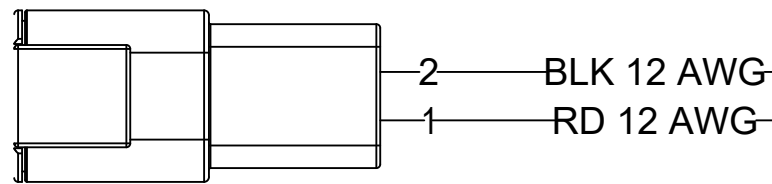


LIGHTS

- BL - STROBE LIGHT
- YL - LEFT WORK LIGHT
- GN - RIGHT WORK LIGHT
- OR - COMPARTMENT LIGHT

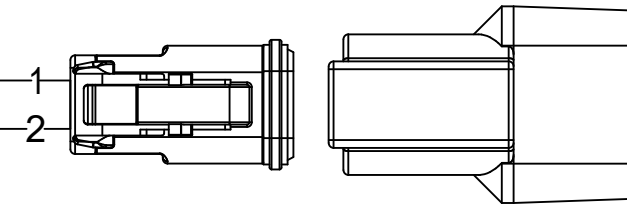
CRANE

- START/STOP - PURPLE
- RD - CRANE POWER
- BLK - CRANE GROUND
- GN/YL - COMPRESSOR RLY
- BL/RD - SPEED CONTROL
- GY - STOP



COMPRESSOR

- BL/RD - SPEED CNTRL
- BLK - COMPRESSOR GND
- RD - COMPRESSOR BAT POWER
- GN/YL - COMPRESSOR RLY

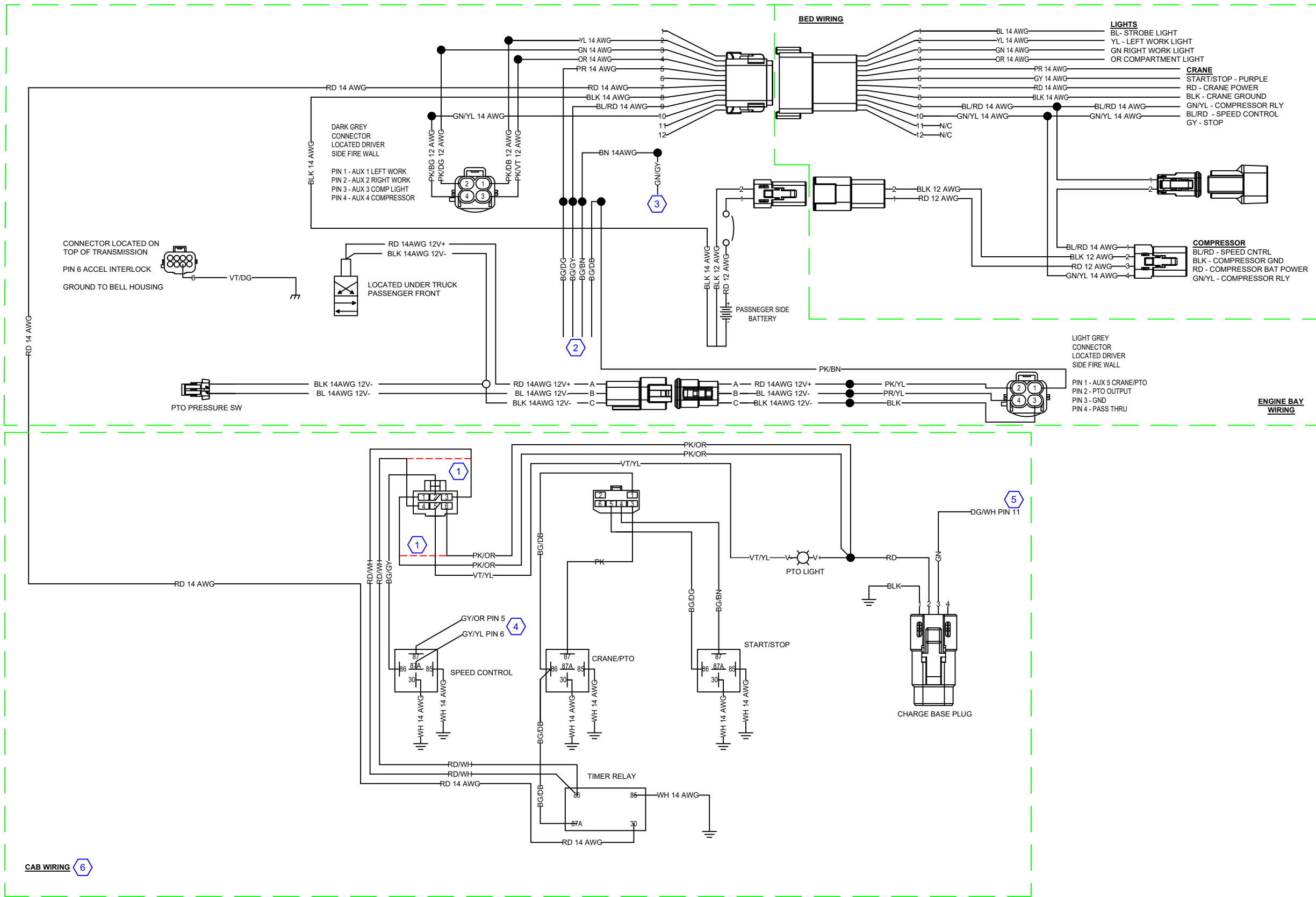


TITLE: STELLAR CRANE/COMP 2023+ FORD WILCOX		DATE 11/07/24
SIZE	DRAWING NO. 2187-1033	REV 0
SCALE: NTS	DRAWN BY: JS	SHEET 4 OF 4

REVISION TABLE				
ZONE	REV	DESCRIPTION	DATE	APPROVED
	1	SEE NOTE 8	07/03/2024	JS



TITLE: RAM 2023 MECH SCHEMATIC STELLAR CRANE/COMP&WILCOX		DATE 2/20/24
SIZE	DRAWING NO. 2187-1036	REV 1
SCALE: NTS	DRAWN BY: JS	SHEET 1 OF 2

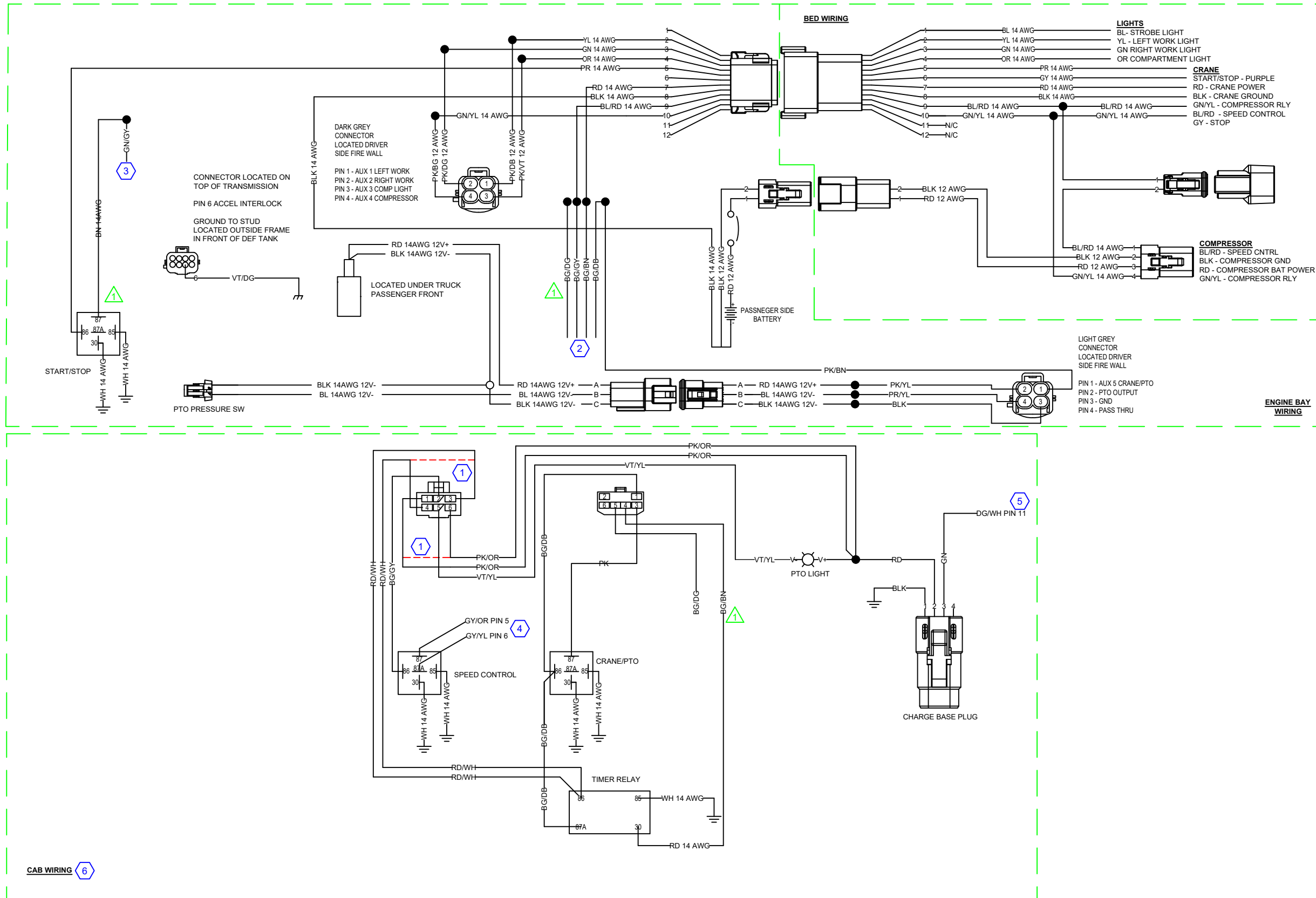


- NOTES:
- IF ASSISTANCE IS NEEDED PLEASE CONTACT CURRY SUPPLY ENGINEERING
- 1 CUT EACH LOOP IN HALF AND ROUTE THEM TO THE DESTINATION SHOWN IN THE SCHEMATIC. RED DASH LINE REPRESENTS THAT IT WAS ONCE A LOOP
 - 2 THESE WIRES ARE GIVEN BY RAM TO USE AS PASS THROUGHS. THEY ARE LOCATED ON THE TOP CORNER OF THE ENGINE BAY DRIVER SIDE
 - 3 THIS IS THE START/STOP WIRE GIVEN TO US BY RAM. IT IS LOCATED UNDER THE FUSE PANEL WRAPPED IN YELLOW TAPE
 - 4 THESE WIRES ARE LOCATED ON THE GREEN CONNECTOR/CABLE THAT PLUGS INTO THE VISIM MODULE
 - 5 THIS WIRE IS LOCATED ON THE BROWN CONNECTOR/CABLE THAT TIES INTO THE VISIM MODULE
 - 6 ALL GROUNDS IN CAB WIRING ARE TO BE GROUNDED TO THE GROUND STUD LOCATED ON DRIVER SIDE LOWER PANEL
 - 7 ALL CAB WIRING SHALL BE CENTRALLY LOCATED ON THE DRIVERS SIDE.



TITLE: RAM 2023 MECH SCHEMATIC STELLAR CRANE/COMP&WILCOX		DATE 2/20/24
SIZE	DRAWING NO. 2187-1036	REV 0
SCALE: NTS	DRAWN BY: JS	SHEET 1 OF 1

CAB WIRING 6



NOTES:

IF ASSISTANCE IS NEEDED PLEASE CONTACT CURRY SUPPLY ENGINEERING

- 1 CUT EACH LOOP IN HALF AND ROUTE THEM TO THE DESTINATION SHOWN IN THE SCHEMATIC. RED DASH LINE REPRESENTS THAT IT WAS ONCE A LOOP
- 2 THESE WIRES ARE GIVEN BY RAM TO USE AS PASS THROUGHS. THEY ARE LOCATED ON THE TOP CORNER OF THE ENGINE BAY DRIVER SIDE
- 3 THIS IS THE START/STOP WIRE GIVEN TO US BY RAM. IT IS LOCATED UNDER THE FUSE PANEL WRAPPED IN YELLOW TAPE
- 4 THESE WIRES ARE LOCATED ON THE GREEN CONNECTOR/CABLE THAT PLUGS INTO THE VISIM MODULE
- 5 THIS WIRE IS LOCATED ON THE BROWN CONNECTOR/CABLE THAT TIES INTO THE VISIM MODULE
- 6 ALL GROUNDS IN CAB WIRING ARE TO BE GROUNDED TO THE GROUND STUD LOCATED ON DRIVER SIDE LOWER PANEL
- 7 ALL CAB WIRING SHALL BE CENTRALLY LOCATED ON THE DRIVERS SIDE.
- 8 MOVED START/STOP RLY TO ENGINE BAY PER REQUEST BY ASSEMBLY. THIS ALLOWS US TO USE A PASS THROUGH FOR THE CRANE OUTPUT INSTEAD OF DRILLING A HOLE THROUGH THE FIRE WALL



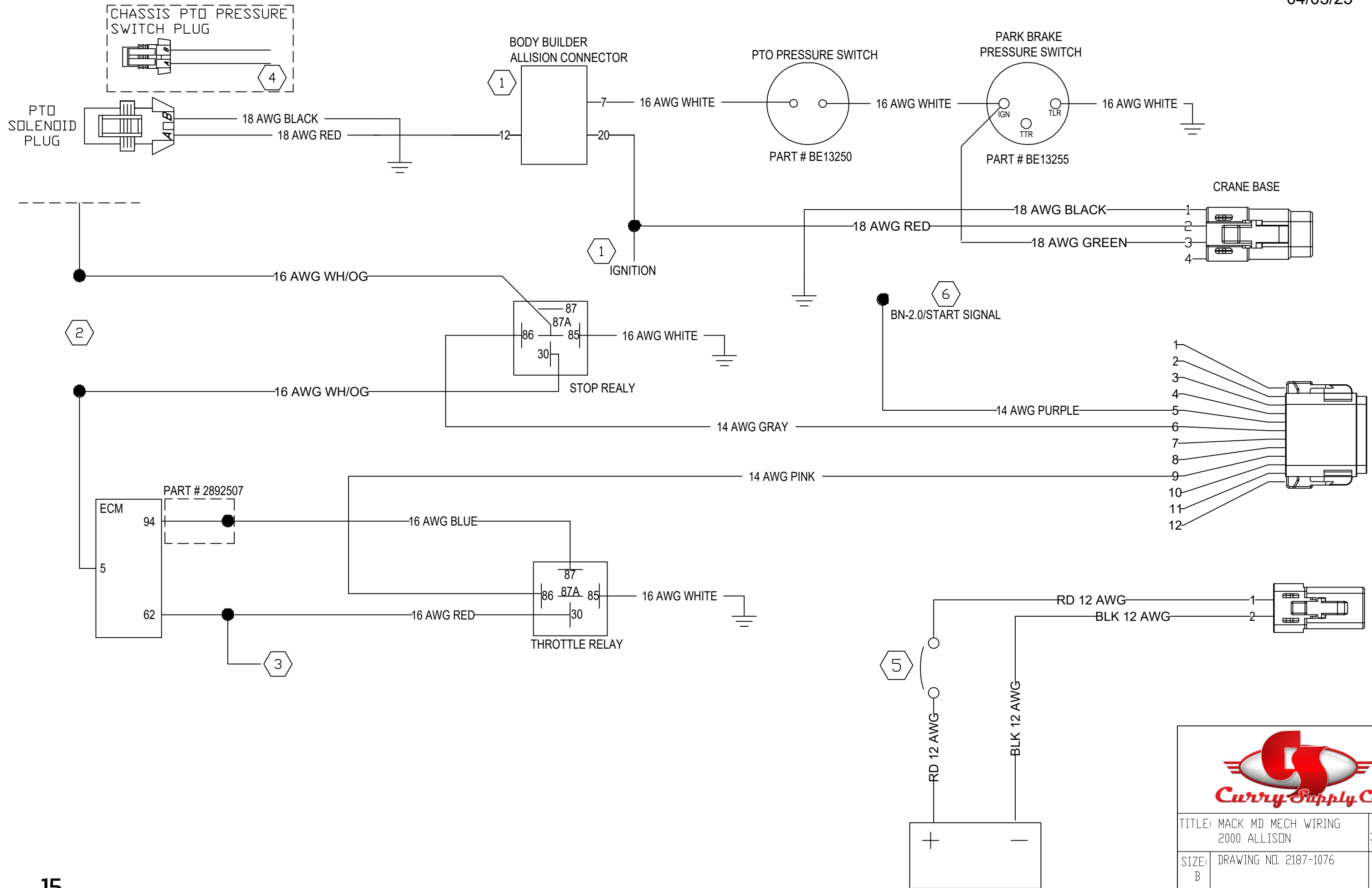
TITLE: RAM 2023 MECH SCHEMATIC STELLAR CRANE/COMP&WILCOX		DATE 2/20/24
SIZE	DRAWING NO. 2187-1036	REV 1
SCALE: NTS	DRAWN BY: JS	SHEET 1 OF 2

NOTES:

- ① LOCATION OF THE BODY BUILDER CONNECTOR AND IGN SIGNAL IS DRIVERSIDE KICK PANEL
- ② LOCATE PIN 5 ON THE ECM CONNECTOR. CUT THE WIRE AND RUN ONE SIDE TO 30 AND THE OTHER SIDE TO 87A AS SHOWN IN THE DIAGRAM
- ③ IF THE WIRE IS POPULATED SIMPLY SPLICE INTO THE WIRE DO NOT REMOVE!
- ④ YOU WILL NEED TO SWAP THE PTO PLUG ON THE TRUCK HARNESS TO MATE CORRECTLY WITH PTO
- ⑤ USE BREAKER THAT COMES WITH COMPRESSOR
- ⑥ LOCATE BROWN WIRE ON THE BACK OF THE KEY SWITCH. THIS IS THE START WIRE FOR THE CHASSIS

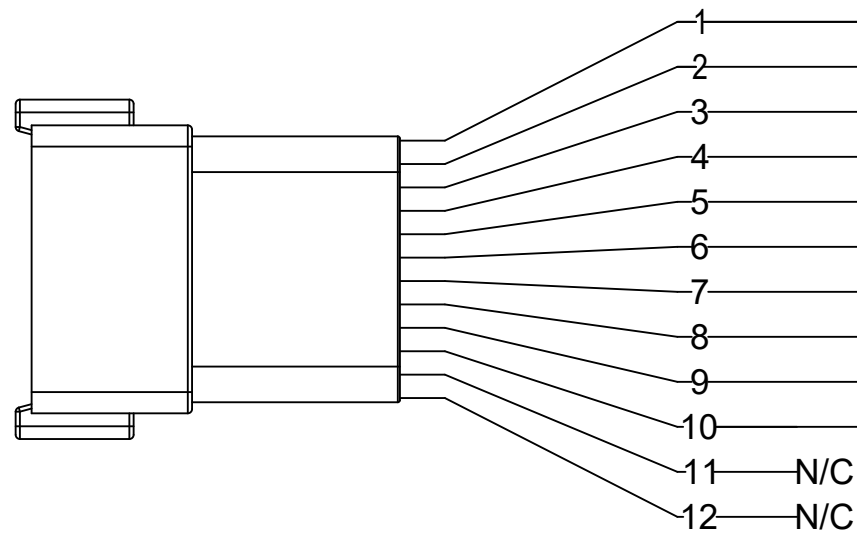


TITLE: MACK MD MECH WIRING 2000 ALLISON		DATE 3/12/2025
SIZE: B	DRAWING NO. 2187-1076	REV 0
SCALE: NTS	DRAWN BY: JS	SHEET 1 OF 3



TITLE: MACK MD MECH WIRING 2000 ALLISON		DATE 3/12/2025
SIZE: B	DRAWING NO. 2187-1076	REV 0
SCALE: NTS	DRAWN BY: JS	SHEET 2 OF 3

BED WIRING



BL 14 AWG
YL 14 AWG
GN 14 AWG
OR 14 AWG

PR 14 AWG
GY 14 AWG
RD 14 AWG
BLK 14 AWG

BL/RD 14 AWG
GN/YL 14 AWG

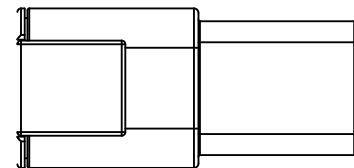
N/C
N/C

LIGHTS

BL- STROBE LIGHT
YL - LEFT WORK LIGHT
GN RIGHT WORK LIGHT
OR COMPARTMENT LIGHT

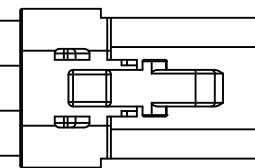
CRANE

START/STOP - PURPLE
RD - CRANE POWER
BLK - CRANE GROUND
GN/YL - COMPRESSOR RLY
BL/RD - SPEED CONTROL
GY - STOP



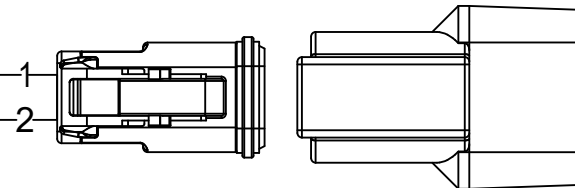
BLK 12 AWG
RD 12 AWG

BL/RD 14 AWG 1
BLK 12 AWG 2
RD 12 AWG 3
GN/YL 14 AWG 4



COMPRESSOR

BL/RD - SPEED CNTRL
BLK - COMPRESSOR GND
RD - COMPRESSOR BAT POWER
GN/YL - COMPRESSOR RLY



TITLE: MACK MD MECH WIRING 2000 ALLISON		DATE 3/12/2025
SIZE: B	DRAWING NO. 2187-1076	REV 0
SCALE: NTS	DRAWN BY: JS	SHEET 3 OF 3