

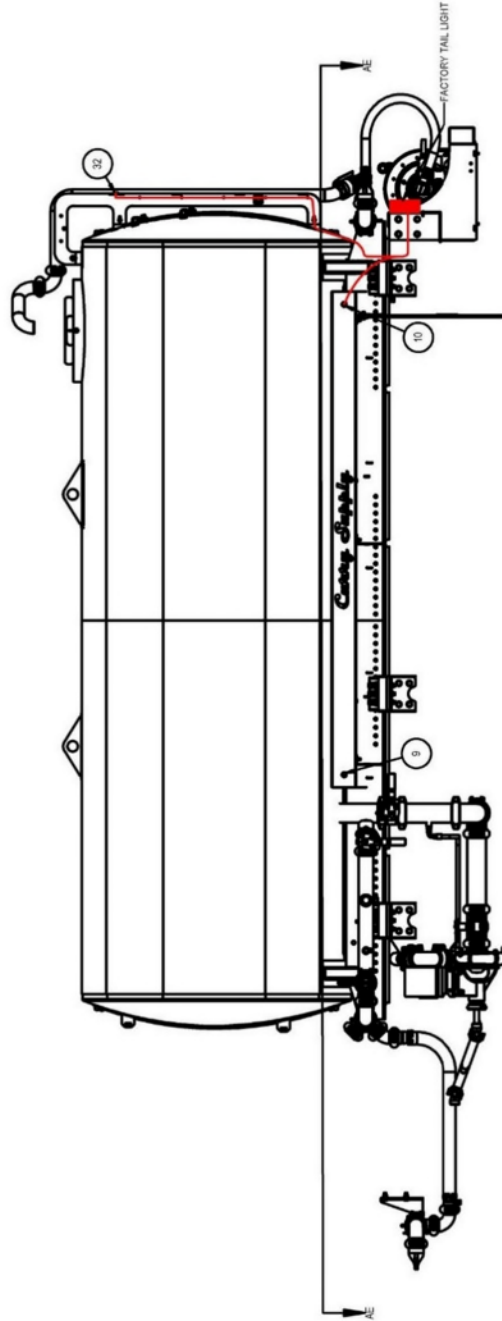
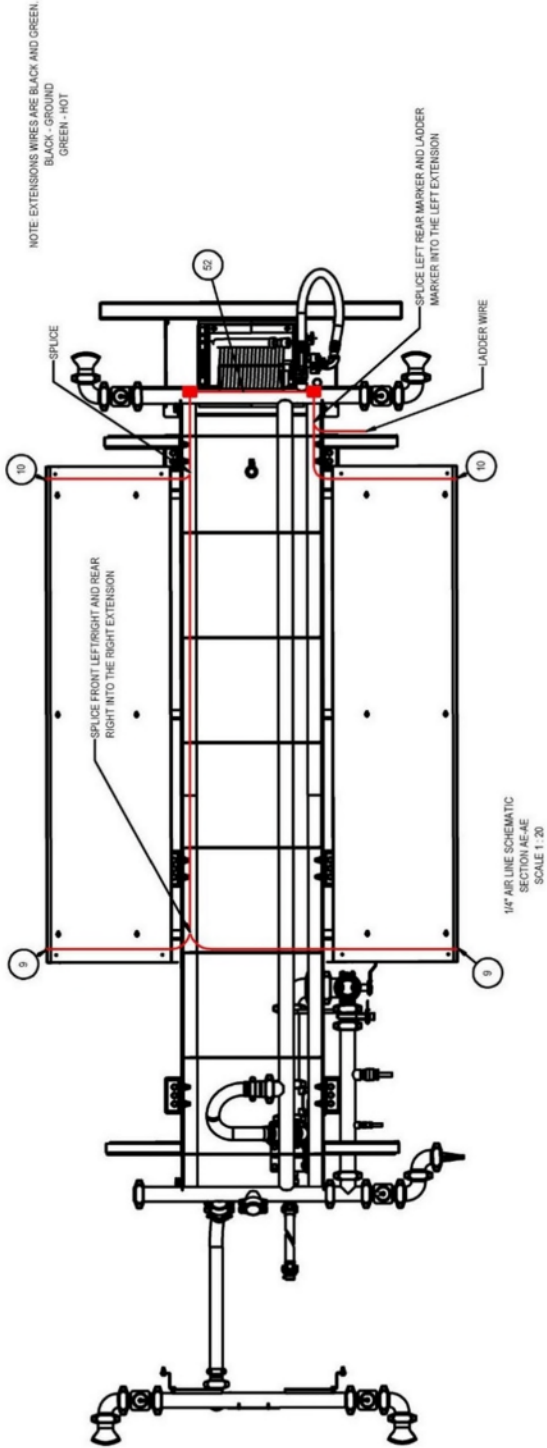
# Water Trucks On Road Remote Engine Drive Schematics

---

<a href="#">Water Tank 4k Gal Gen IV – Electric Diagram SCH1-1</a>	<a href="#">Page 2</a>
<a href="#">Water Tank 4k Gal Gen IV – Airline Diagram SCH2-1</a>	<a href="#">Page 3</a>
<a href="#">Water Truck Harness/Wiring Diagram SCH3-1</a>	<a href="#">Page 4</a>
<a href="#">Water Truck Harness/Wiring Diagram SCH4-1</a>	<a href="#">Page 5</a>
<a href="#">Ford F650 &amp; F750 Wire Harness Schematic SCH5-1</a>	<a href="#">Page 6</a>
<a href="#">HATZ 3H50T Remote Engine Sensor Locations SCH6-1</a>	<a href="#">Page 7</a>
<a href="#">HATZ 3H50T Remote Engine Sensor Locations SCH7-1</a>	<a href="#">Page 8</a>
<a href="#">HATZ 3H50T Remote Engine Sensor Locations SCH8-1</a>	<a href="#">Page 9</a>
<a href="#">HATZ 3H50T Remote Engine Actuator Locations SCH9-1</a>	<a href="#">Page 10</a>
<a href="#">HATZ 3H50T Remote Engine Wiring Diagram SCH10-1</a>	<a href="#">Page 11</a>
<a href="#">Elkhart Nitro Joystick Electric SCH11-1</a>	<a href="#">Page 12</a>
<a href="#">Elkhart Nitro Position Sensor SCH11-2</a>	<a href="#">Page 13</a>
<a href="#">Elkhart Nitro Monitor Harness SCH11-3</a>	<a href="#">Page 14</a>
<a href="#">Elkhart Nitro Connector Pin Diagram SCH11-4</a>	<a href="#">Page 15</a>
<a href="#">Mack MD Wiring 2K Allison w Park Brake Switch SCH12-1</a>	<a href="#">Page 16</a>
<a href="#">Mack MD Wiring 2K Allison w Park Brake Switch SCH12-2</a>	<a href="#">Page 17</a>
<a href="#">Mack MD Wiring 2K Allison w Park Brake Switch SCH13-1</a>	<a href="#">Page 18</a>

**CAUTION**

PLEASE CONTACT CURRY SUPPLY COMPANY BEFORE ATTEMPTING ANY CHANGES TO THE ELECTRICAL SYSTEMS. DOING SO MAY CAUSE EQUIPMENT DAMAGE OR VOID WARRANTY.



NAME	DATE
MODEL BY:	09/17/19
DRAWN BY:	09/17/19
ENG APPR:	
MFG APPR:	
D.A.	



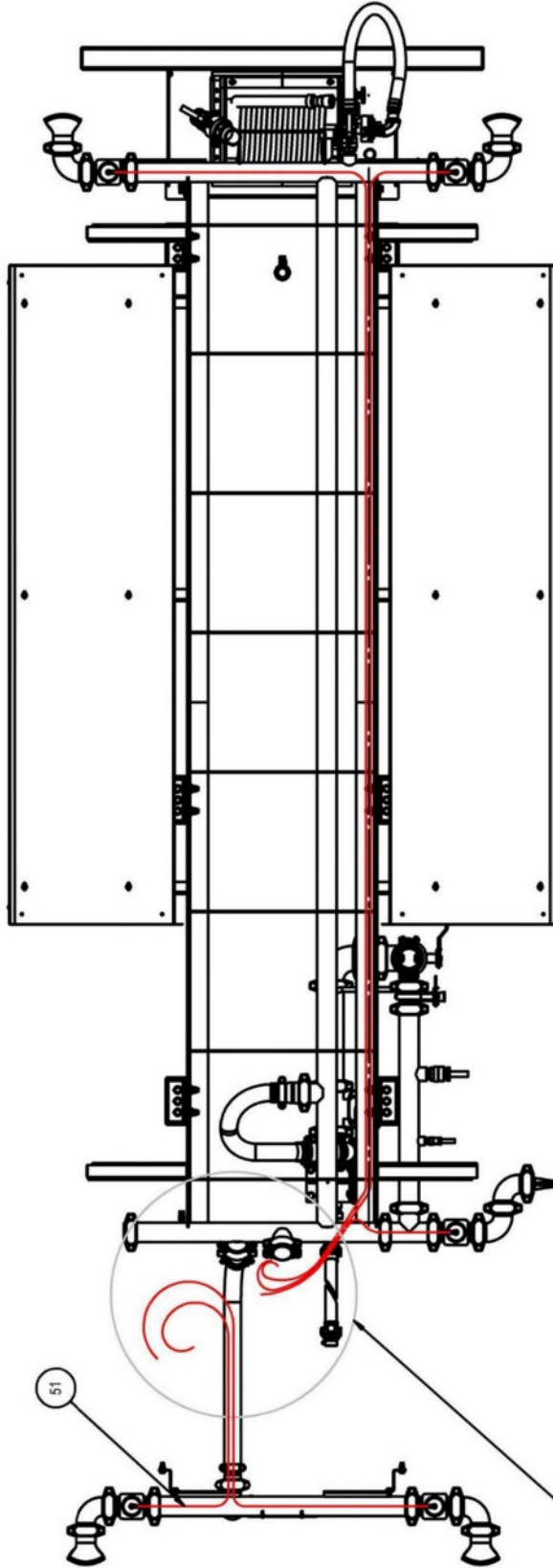
TITLE: WATER TANK, 4,000 GAL.  
GEN IV - ELECTRIC DIAGRAM

SIZE | PART NO. | REV  
**C** | 1815-1000 | 0

CONTROLLED DOCUMENT

**PROPRIETARY AND CONFIDENTIAL**

THE INFORMATION CONTAINED IN THIS DRAWING IS THE SOLE PROPERTY OF CURRY SUPPLY COMPANY. IT IS TO BE USED ONLY IN PART OR AS A WHOLE WITHOUT THE WRITTEN PERMISSION OF CURRY SUPPLY COMPANY & IS PROHIBITED.



1/4" AIR LINE DIAGRAM  
SECTION L-L  
SCALE 1 : 20

RUN LINES THROUGH THE BOTTOM OF THE CAB INTO THE CONTROL SWITCHES.  
NOTE: DIFFERENT CHASSIS MODELS MAY HAVE DIFFERENT SWITCH LOCATIONS.  
ENTER THE CAB AT THE BEST LOCATION FOR THE SWITCH LAYOUT THAT DOES NOT REQUIRE ANY SPLICING.

MODEL BY:	NAME	DATE
DRAWN BY:	MLC	09/17/19
ENG. APPR.	MLC	09/17/19
MFG. APPR.		
Q.A.		
COMMENTS:		



TITLE: WATER TANK, 4,000 GAL.  
GEN IV - AIR LINE DIAGRAM

SIZE	PART NO.	REV
B	1815-1000	0

SHEET 2 OF 5

**PROPRIETARY AND CONFIDENTIAL**

THE INFORMATION CONTAINED IN THIS DRAWING IS THE SOLE PROPERTY OF CURRY SUPPLY COMPANY. ANY REPRODUCTION IN PART OR AS A WHOLE WITHOUT THE WRITTEN PERMISSION OF CURRY SUPPLY COMPANY IS PROHIBITED.

Item No.	QTY.	Part No.	Stock Desc.	Units
1	2	ADO-PT1927	Connector 5-way 5 pin for Chevrolet Tail Light GM	ea
2	10	0747509	.157", 16-14 AWG, FEMALE BULLET CONNECTOR	ea
3	265	0708152	3/8" POLYETHYLENE SLIT WIRE LOOM	in
4	310	0708151	1/4" POLYETHYLENE SLIT WIRE LOOM	in
5	140	0700457	14 GAUGE RED	in
6	125	0710096	14 GAUGE GREEN	in
7	775	0700458	14 GAUGE WHITE	in
8	745	5121819	14 GAUGE BROWN	in
9	1	76455422	Electrical Tape, 3M Scotch Super 33+, 3/4" Wide, 76 Feet Long, Black	ea
10	5	0749243	FASTENAL 6AWG-6AWG SHRINK TUBE W/ ADHESIVE 2" LONG	ea
11	2	58904	16-14 AWG PowerPhase® FTD Stud Blue Polyolefin Sealed Clamp Ring Terminal	ea
12	3	34318	TE CONNECT PARALLEL SPLICES 6AWG	ea
13	2	34319	TE CONNECT PARALLEL SPLICES 6AWG	ea

▲ ELECTRICAL TAPE CALLOUT SYMBOL

▨ SPLICE CALLOUT SYMBOL (SP#)

**NOTES:**  
 REFERENCE DOCUMENT:  
 -BUILD CABLE HARNESS IN ACCORDANCE WITH IPC-620

1 SPlicing WIRES SHALL BE DONE AN 1-1/2 BEFORE BREAKING OUT THE HARNESS

2. ITEM NO. 5-10,12,13 NOT SHOWN IN ASSEMBLY

3. ALTERNATE PART NO. ARE ALLOWED AS LONG AS THE ALTERNATE PART PROVIDES THE SAME FORM FIT AND FUNCTION. IF UNSURE PLEASE CONTACT CURRY SUPPLY ENGINEERING

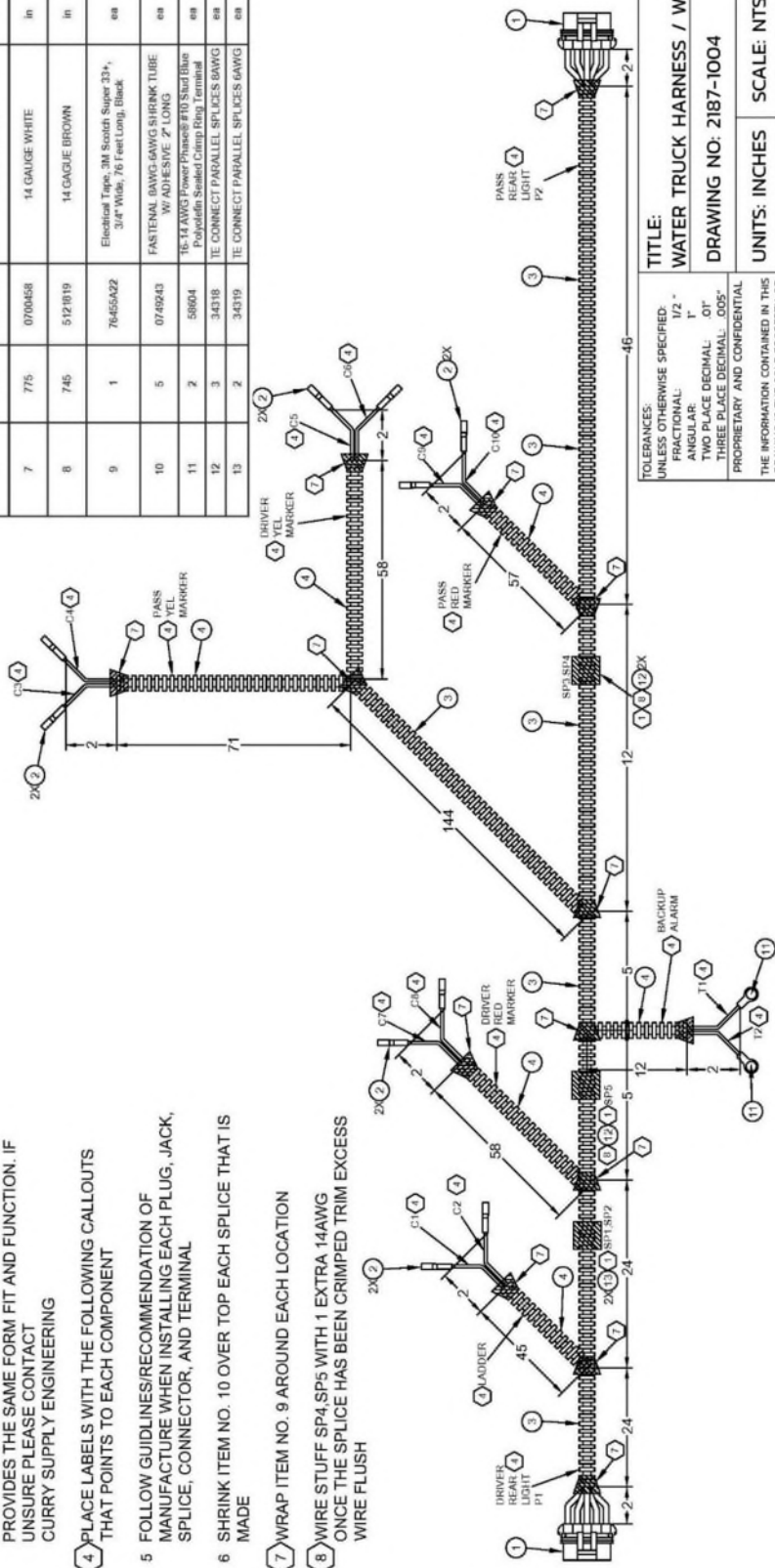
4 PLACE LABELS WITH THE FOLLOWING CALLOUTS THAT POINTS TO EACH COMPONENT

5 FOLLOW GUIDELINES/RECOMMENDATION OF MANUFACTURE WHEN INSTALLING EACH PLUG, JACK, SPLICE, CONNECTOR, AND TERMINAL

6 SHRINK ITEM NO. 10 OVER TOP EACH SPLICE THAT IS MADE

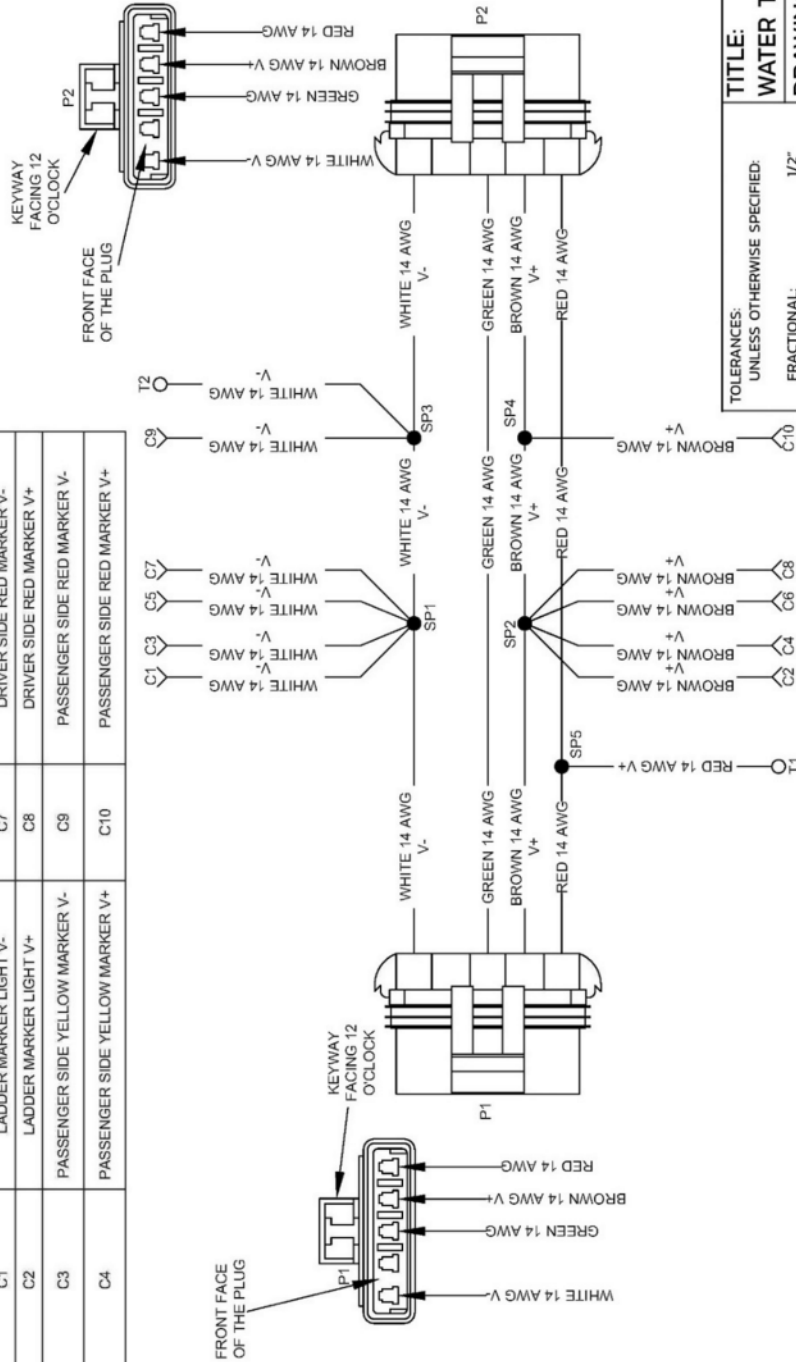
7 WRAP ITEM NO. 9 AROUND EACH LOCATION

8 WIRE STUFF SP4, SP5 WITH 1 EXTRA 14AWG ONCE THE SPLICE HAS BEEN CRIMPED TRIM EXCESS WIRE FLUSH

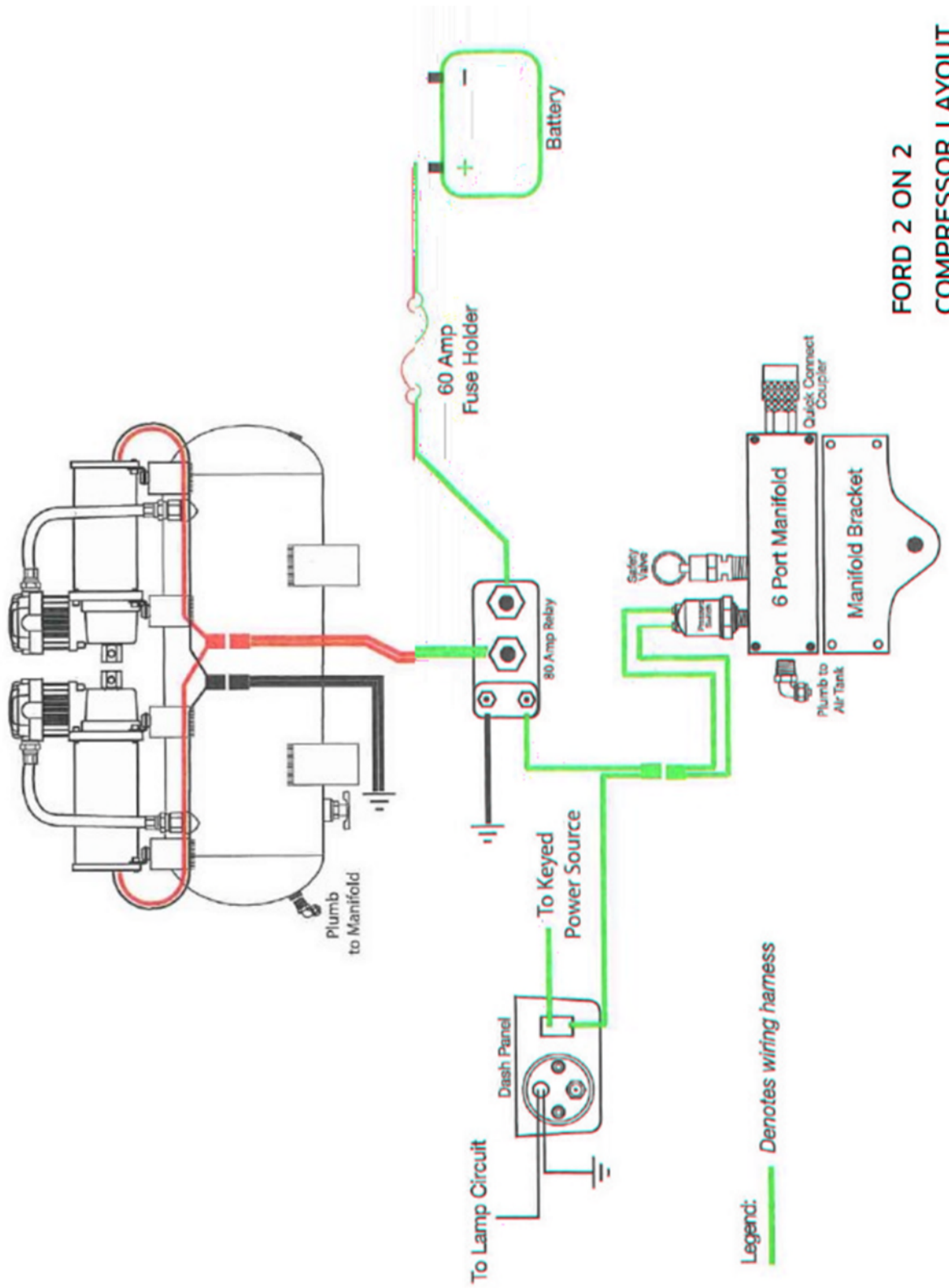


<b>TITLE:</b> WATER TRUCK HARNESS / WD	
<b>DRAWING NO:</b> 2187-1004	
<b>UNITS:</b> INCHES	<b>SCALE:</b> NTS
<b>MODEL BY:</b> JS 01/24/23	
<b>DRAWN BY:</b> JS 01/24/23	
<small>TOLERANCES: UNLESS OTHERWISE SPECIFIED: FRACTIONAL: 1/2" ANGULAR: 1° TWO PLACE DECIMAL: .01" THREE PLACE DECIMAL: .005" PROPRIETARY AND CONFIDENTIAL</small>	
<small>THE INFORMATION CONTAINED IN THIS DRAWING IS THE SOLE PROPERTY OF CURRY SUPPLY CO. ANY REPRODUCTION IN PART OR AS A WHOLE WITHOUT THE WRITTEN PERMISSION OF CURRY SUPPLY CO IS PROHIBITED.</small>	

LABEL	DESCRIPTION	LABEL	DESCRIPTION
P1	DRIVER REAR TAIL LIGHT	C5	DRIVER SIDE YELLOW MARKER V-
P2	HARNESS TIE IN	C6	DRIVER SIDE YELLOW MARKER V+
C1	LADDER MARKER LIGHT V-	C7	DRIVER SIDE RED MARKER V-
C2	LADDER MARKER LIGHT V+	C8	DRIVER SIDE RED MARKER V+
C3	PASSENGER SIDE YELLOW MARKER V-	C9	PASSENGER SIDE RED MARKER V-
C4	PASSENGER SIDE YELLOW MARKER V+	C10	PASSENGER SIDE RED MARKER V+

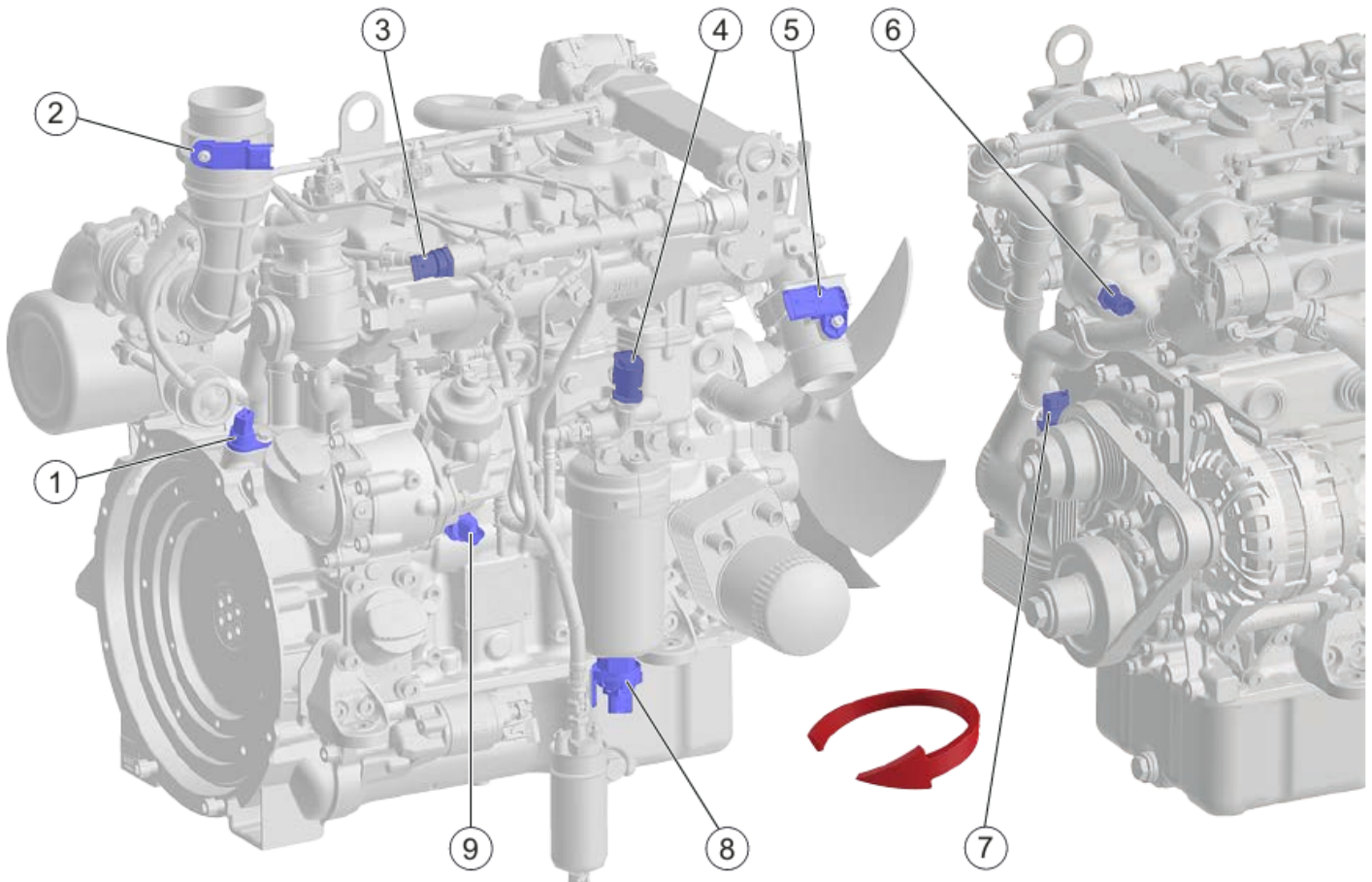


<b>TITLE:</b>	
WATER TRUCK HARNESS/WD	
DRAWING NO. 2187-1004	
REV: 0	
<b>UNITS:</b> INCHES	<b>SCALE:</b> NTS
MODEL BY: JS 01/24/23	
DRAWN BY: JS 01/24/23	
TOLERANCES: UNLESS OTHERWISE SPECIFIED: FRACTIONAL: 1/2" ANGULAR: 1° TWO PLACE DECIMAL: .01" THREE PLACE DECIMAL: .005" PROPRIETARY AND CONFIDENTIAL THE INFORMATION CONTAINED IN THIS DRAWING IS THE SOLE PROPERTY OF CURRY SUPPLY CO. ANY REPRODUCTION IN PART OF AS A WHOLE WITHOUT THE WRITTEN PERMISSION OF CURRY SUPPLY CO IS PROHIBITED.	



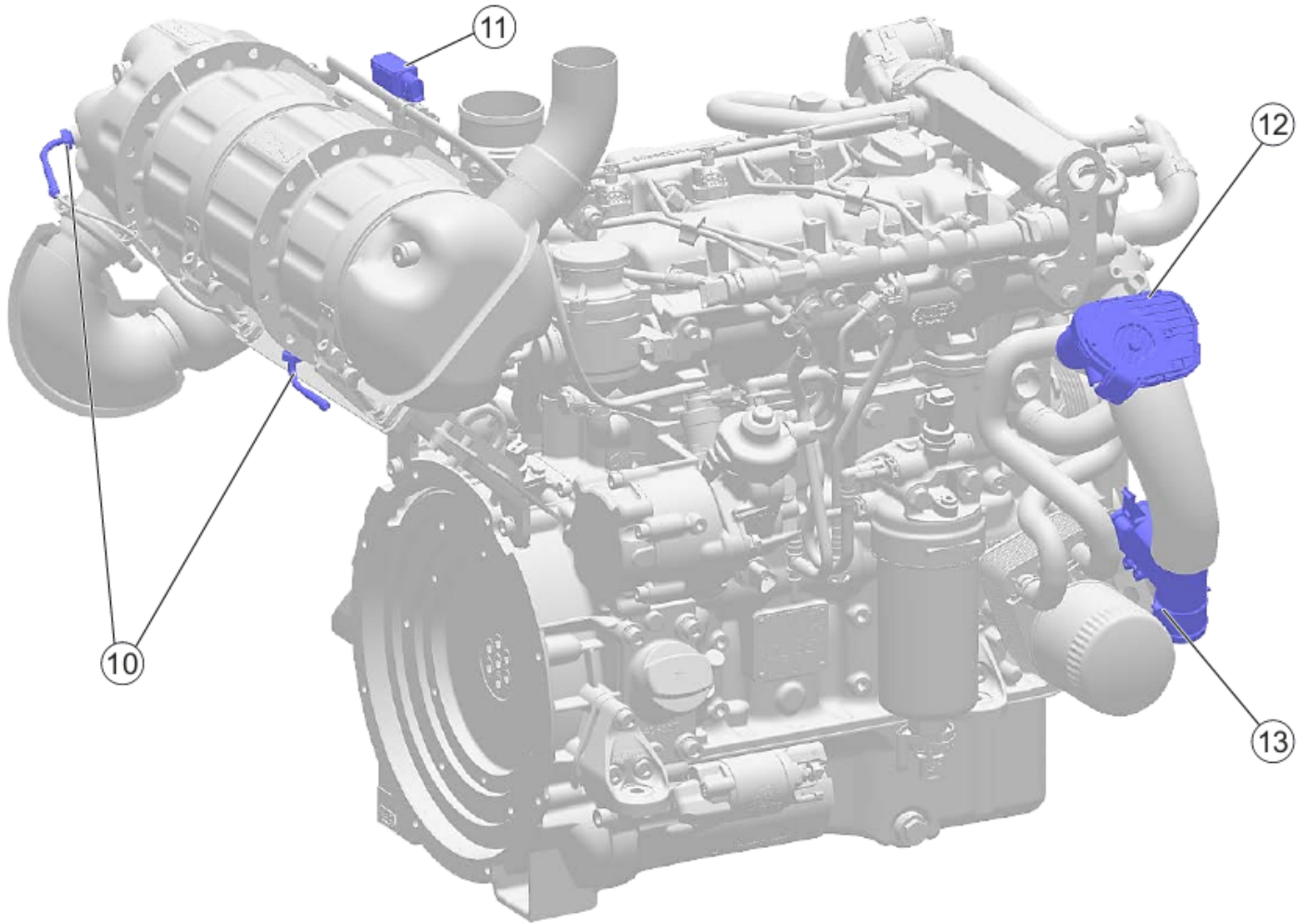
**FORD 2 ON 2  
COMPRESSOR LAYOUT**

### HATZ 3H50T Sensor Locations



1. Crankshaft speed sensor
2. Air filter differential pressure sensor
3. Rail pressure sensor
4. Fuel low pressure and fuel temperature sensor
5. Charge air pressure and charge air temperature sensor (T/TI/TIC)
6. Coolant temperature sensor
7. Camshaft sensor
8. Water in fuel sensor
9. Oil pressure and oil temperature sensor

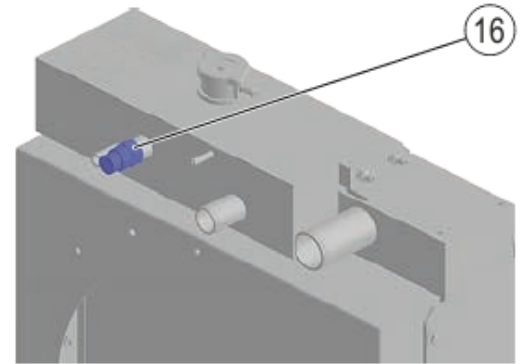
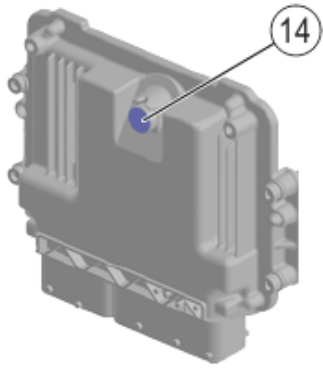
### HATZ 3H50T Sensor Locations



- 10. Exhaust temperature sensors (TICD)
- 11. Differential pressure sensor (TICD)
- 12. Intake throttle (TICD)
- 13. Air mass meter (TICD)

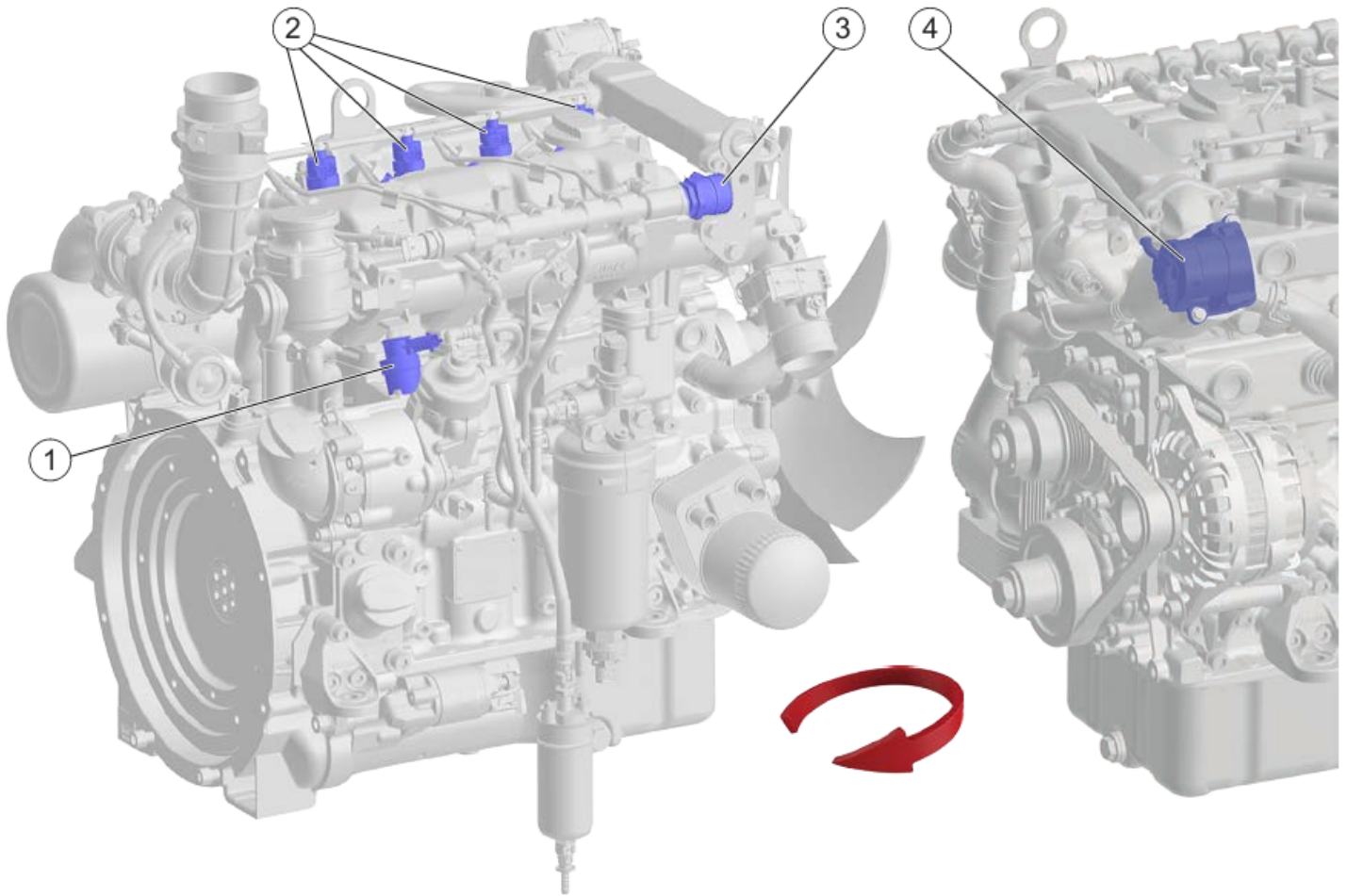


### HATZ 3H50T Sensor Locations

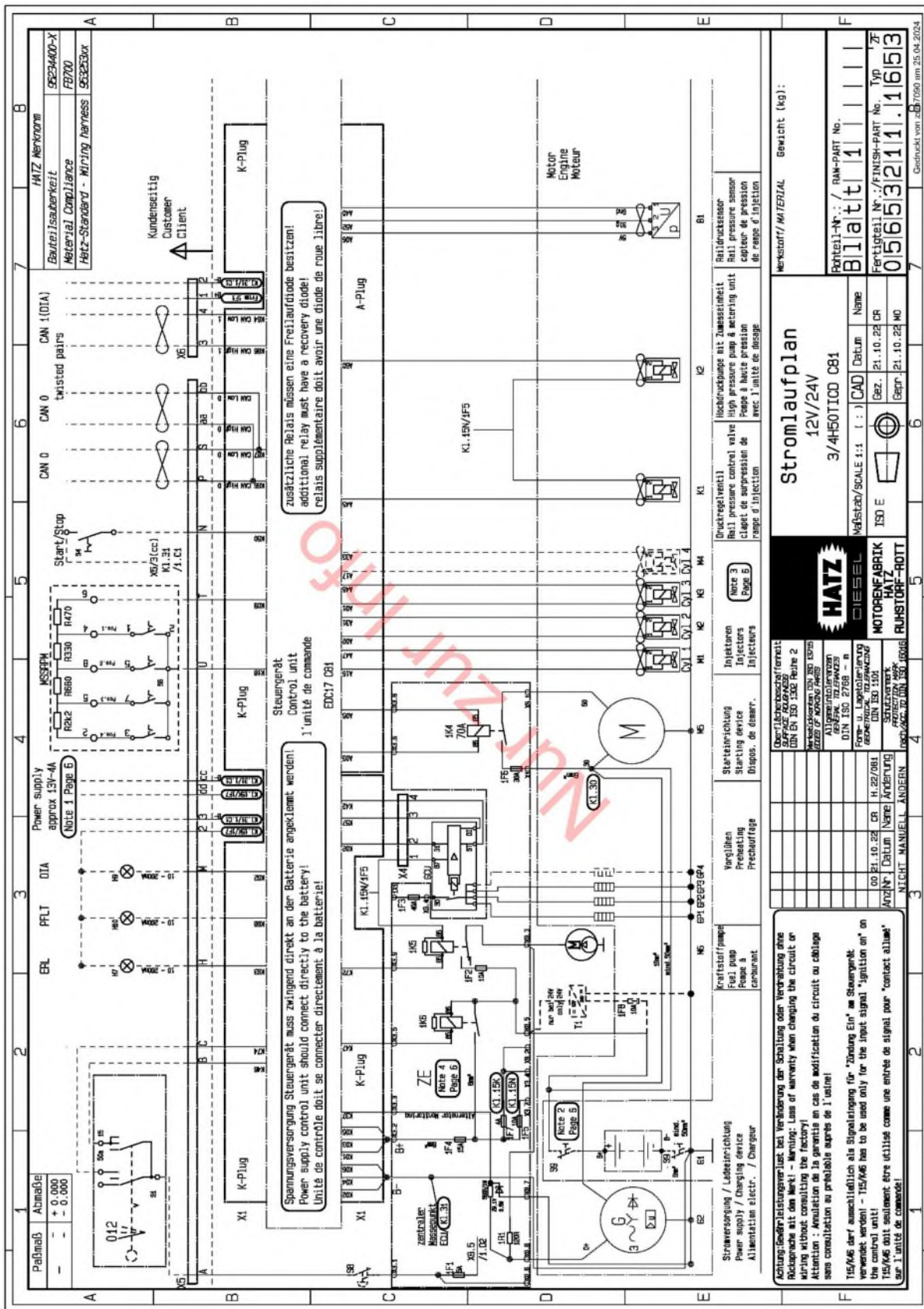


- 14. Ambient pressure sensor (integrated in the engine control unit)
- 15. Coolant level sensor (with external expansion tank)
- 16. Coolant level sensor (OPU cooler)

### HATZ 3H50T Actuator Locations



1. Metering unit on the high-pressure pump
2. Injectors
3. Rail pressure control valve
4. EGR valve



**Stromlaufplan**  
 12V/24V  
 3/4H501100 CB1

Maßstab/SCALE 1:1 (1:1) CAD Datum Name  
 Bez. 21.10.22 CR  
 Gepr. 21.10.22 MO

Parteil-Nr.: / RAM-PART No.  
**016532111.1653**

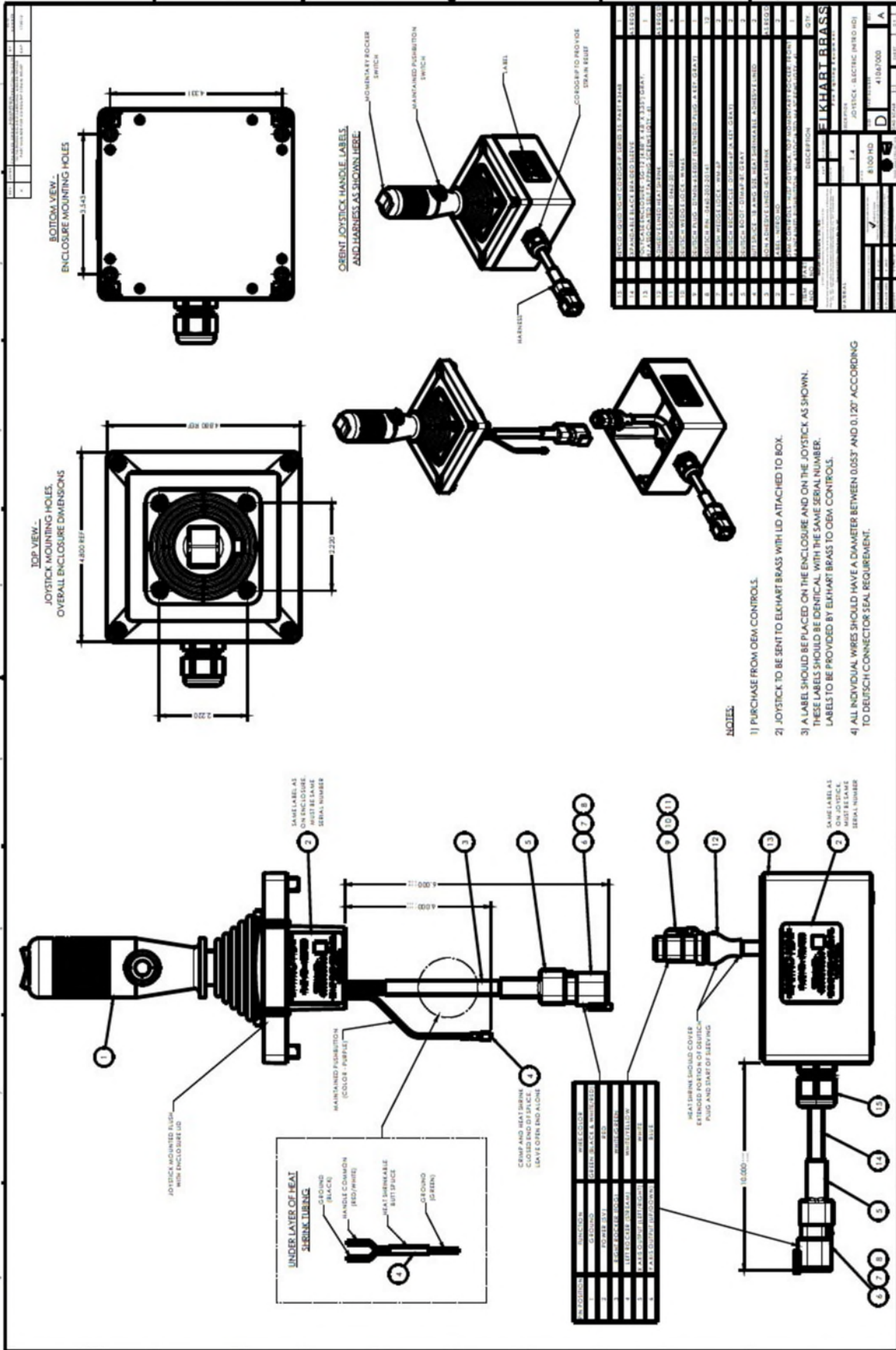
Parteil-Nr.: / FINISH-PART No.  
**016532111.1653**

Überlithographiert (revised)  
 SURFACE GRAVURE  
 DIN EN ISO 15000 Reihe 2  
 GEZEIGT (checked)  
 CHECKED BY: M. S. / M. S.  
 GEZEIGT (checked)  
 CHECKED BY: M. S. / M. S.  
 DIN ISO 2768 - m  
 Form- u. Lagertoleranzen  
 DIMENSIONS AND TOLERANCES  
 FORM AND FITS  
 DIN ISO 15000  
 AUTOMATIC VERIFICATION  
 AUTOMATIQUEMENT  
 ISO 9001:2015 DIM. ISO 15000

00 01.10.22 CR H.22/081  
 01/21 Datum Name Aenderung  
 NICHT MANUELL ANDEERN

**Achtung/Sonderleistungswert bei Veränderung der Schaltung oder Verdrängung ohne Rückmeldung an den Markt - warning: Loss of warranty when changing the circuit or moving components without notifying the factory**  
**Attention/Service value in case of modification of circuit or change of components without notifying the factory**

115/K46 darf ausschließlich als Signalanlage für "Zündung Ein" am Steuergerät verwendet werden - 115/K46 has to be used only for the input signal "ignition on" on the control unit!  
 115/K46 doit seulement être utilisé comme une entrée de signal pour "contact allumé" sur l'unité de commande!



- NOTES:**
- 1) PURCHASE FROM OEM CONTROLS.
  - 2) JOYSTICK TO BE SENT TO ELKHART BRASS WITH LID ATTACHED TO BOX.
  - 3) A LABEL SHOULD BE PLACED ON THE ENCLOSURE AND ON THE JOYSTICK AS SHOWN. THESE LABELS SHOULD BE IDENTICAL WITH THE SAME SERIAL NUMBER. LABELS TO BE PROVIDED BY ELKHART BRASS TO OEM CONTROLS.
  - 4) ALL INDIVIDUAL WIRES SHOULD HAVE A DIAMETER BETWEEN 0.0037" AND 0.1207" ACCORDING TO DEUTSCH CONNECTOR SEAL REQUIREMENT.

1	GREEN	BLACK	UNSHIELDED
2	RED	WHITE	UNSHIELDED
3	GREEN	WHITE	UNSHIELDED
4	RED	BLACK	UNSHIELDED
5	GREEN	BLACK	UNSHIELDED
6	RED	BLACK	UNSHIELDED
7	GREEN	BLACK	UNSHIELDED
8	RED	BLACK	UNSHIELDED
9	GREEN	BLACK	UNSHIELDED
10	RED	BLACK	UNSHIELDED
11	GREEN	BLACK	UNSHIELDED
12	RED	BLACK	UNSHIELDED
13	GREEN	BLACK	UNSHIELDED
14	RED	BLACK	UNSHIELDED
15	GREEN	BLACK	UNSHIELDED
16	RED	BLACK	UNSHIELDED
17	GREEN	BLACK	UNSHIELDED
18	RED	BLACK	UNSHIELDED
19	GREEN	BLACK	UNSHIELDED
20	RED	BLACK	UNSHIELDED
21	GREEN	BLACK	UNSHIELDED
22	RED	BLACK	UNSHIELDED
23	GREEN	BLACK	UNSHIELDED
24	RED	BLACK	UNSHIELDED
25	GREEN	BLACK	UNSHIELDED
26	RED	BLACK	UNSHIELDED
27	GREEN	BLACK	UNSHIELDED
28	RED	BLACK	UNSHIELDED
29	GREEN	BLACK	UNSHIELDED
30	RED	BLACK	UNSHIELDED
31	GREEN	BLACK	UNSHIELDED
32	RED	BLACK	UNSHIELDED
33	GREEN	BLACK	UNSHIELDED
34	RED	BLACK	UNSHIELDED
35	GREEN	BLACK	UNSHIELDED
36	RED	BLACK	UNSHIELDED
37	GREEN	BLACK	UNSHIELDED
38	RED	BLACK	UNSHIELDED
39	GREEN	BLACK	UNSHIELDED
40	RED	BLACK	UNSHIELDED
41	GREEN	BLACK	UNSHIELDED
42	RED	BLACK	UNSHIELDED
43	GREEN	BLACK	UNSHIELDED
44	RED	BLACK	UNSHIELDED
45	GREEN	BLACK	UNSHIELDED
46	RED	BLACK	UNSHIELDED
47	GREEN	BLACK	UNSHIELDED
48	RED	BLACK	UNSHIELDED
49	GREEN	BLACK	UNSHIELDED
50	RED	BLACK	UNSHIELDED
51	GREEN	BLACK	UNSHIELDED
52	RED	BLACK	UNSHIELDED
53	GREEN	BLACK	UNSHIELDED
54	RED	BLACK	UNSHIELDED
55	GREEN	BLACK	UNSHIELDED
56	RED	BLACK	UNSHIELDED
57	GREEN	BLACK	UNSHIELDED
58	RED	BLACK	UNSHIELDED
59	GREEN	BLACK	UNSHIELDED
60	RED	BLACK	UNSHIELDED
61	GREEN	BLACK	UNSHIELDED
62	RED	BLACK	UNSHIELDED
63	GREEN	BLACK	UNSHIELDED
64	RED	BLACK	UNSHIELDED
65	GREEN	BLACK	UNSHIELDED
66	RED	BLACK	UNSHIELDED
67	GREEN	BLACK	UNSHIELDED
68	RED	BLACK	UNSHIELDED
69	GREEN	BLACK	UNSHIELDED
70	RED	BLACK	UNSHIELDED
71	GREEN	BLACK	UNSHIELDED
72	RED	BLACK	UNSHIELDED
73	GREEN	BLACK	UNSHIELDED
74	RED	BLACK	UNSHIELDED
75	GREEN	BLACK	UNSHIELDED
76	RED	BLACK	UNSHIELDED
77	GREEN	BLACK	UNSHIELDED
78	RED	BLACK	UNSHIELDED
79	GREEN	BLACK	UNSHIELDED
80	RED	BLACK	UNSHIELDED
81	GREEN	BLACK	UNSHIELDED
82	RED	BLACK	UNSHIELDED
83	GREEN	BLACK	UNSHIELDED
84	RED	BLACK	UNSHIELDED
85	GREEN	BLACK	UNSHIELDED
86	RED	BLACK	UNSHIELDED
87	GREEN	BLACK	UNSHIELDED
88	RED	BLACK	UNSHIELDED
89	GREEN	BLACK	UNSHIELDED
90	RED	BLACK	UNSHIELDED
91	GREEN	BLACK	UNSHIELDED
92	RED	BLACK	UNSHIELDED
93	GREEN	BLACK	UNSHIELDED
94	RED	BLACK	UNSHIELDED
95	GREEN	BLACK	UNSHIELDED
96	RED	BLACK	UNSHIELDED
97	GREEN	BLACK	UNSHIELDED
98	RED	BLACK	UNSHIELDED
99	GREEN	BLACK	UNSHIELDED
100	RED	BLACK	UNSHIELDED

**ELKHART BRASS**

JOYSTICK - ELECTRIC (PHD HO)

41067000

REV. A

# ELKHART BRASS

FIRE FIGHTING EQUIPMENT A SAFE FLEET BRAND

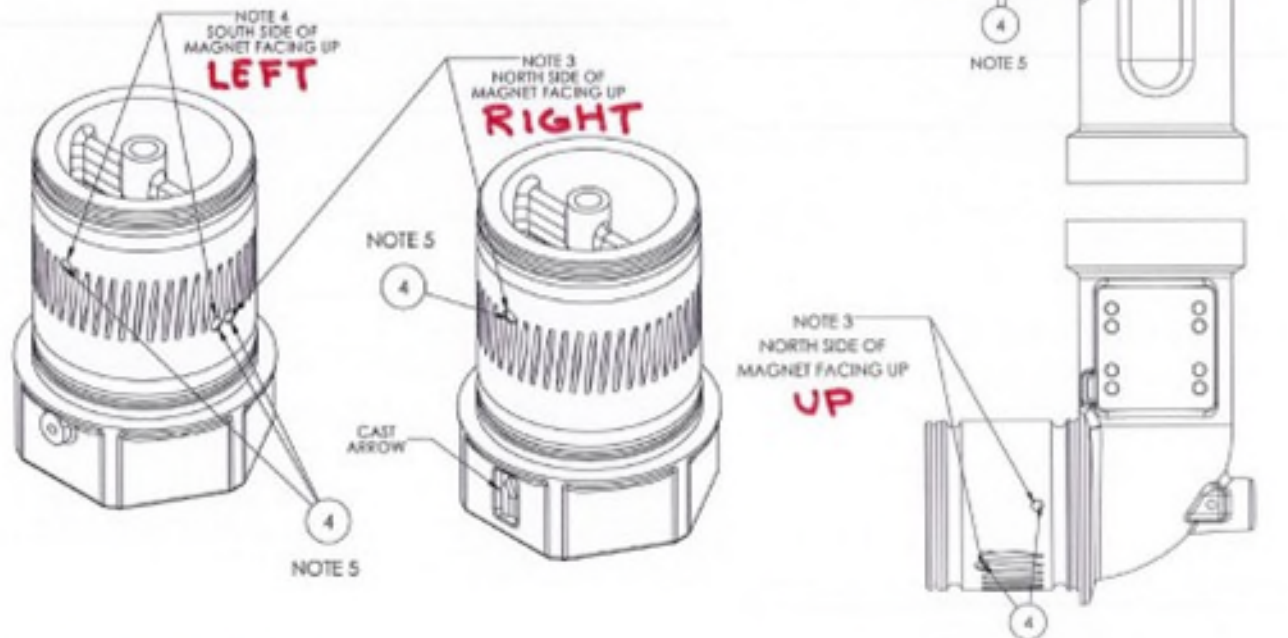
## 8100HD (Nitro HD) position sensor testing information

The position sensor used for controlling Vertical and Horizontal travel on the 8100HD (Nitro HD) is p/n 67566000.

- The sensors RED wire should have +5 volts on it.
- The sensors BLACK wire should be GROUND.
- The sensors GREEN wire should have;
  - Around +2.5v when no magnet is detected.
  - It should drop below +2.5 volts (around +1.5v) when detecting the North Pole of a magnet (RIGHT or UP).
  - It should go above +2.5 volts (around +3.5v) when detecting the South Pole of a magnet (LEFT or DOWN).

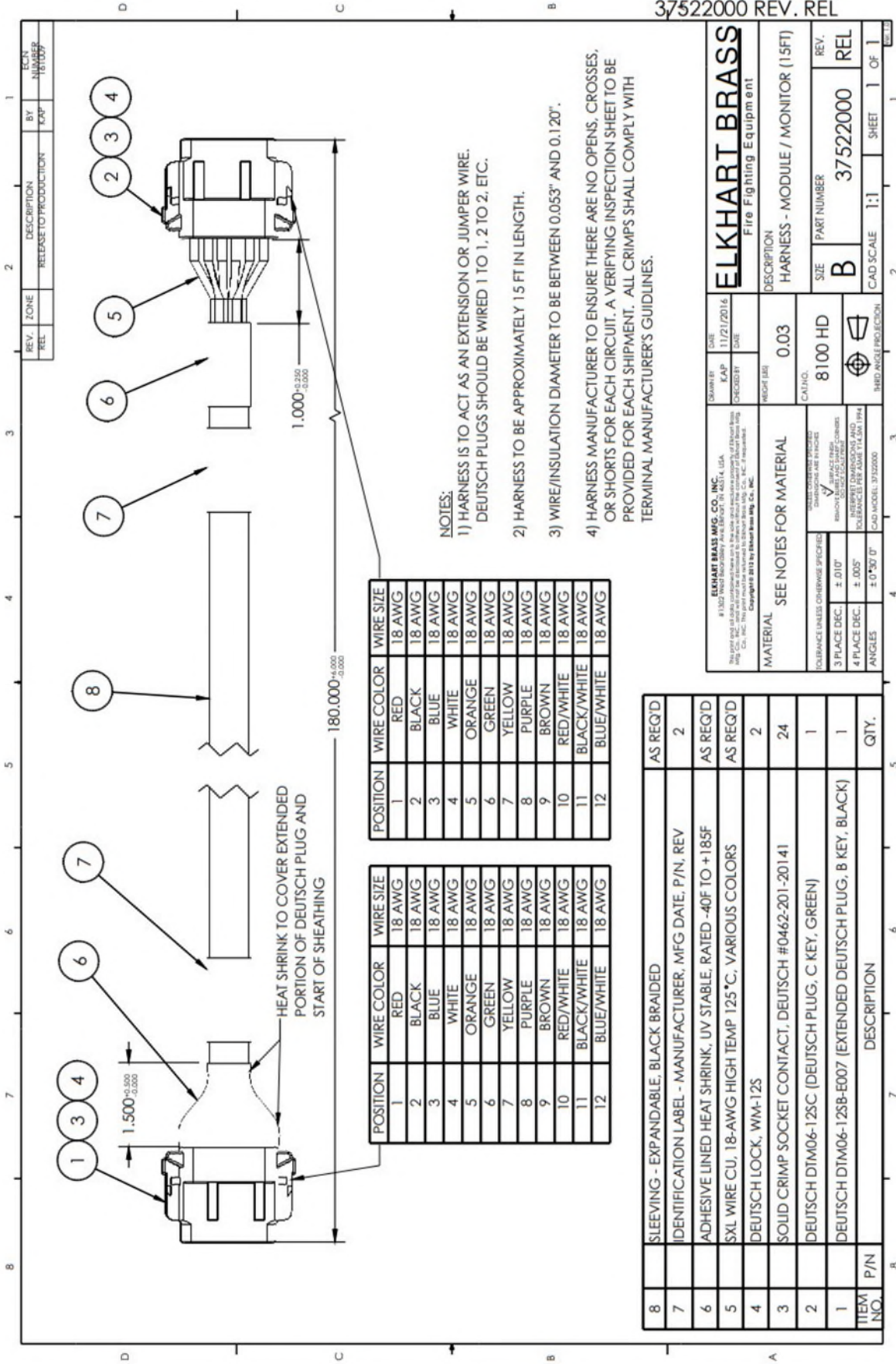
The magnets used on the 8100HD (Nitro HD) are p/n 46057000 and are positioned as follows.

- North Pole facing out for RIGHT and UP limits.
- South Pole facing out for LEFT and DOWN limits.



Last Revised 01/23/23

Elkhart Brass Mfg. Co., Inc. 1302 W. Beardsley Avenue • Elkhart, Indiana 46514 • 1-574-295-8330 • 1-800-346-0250  
www.elkhartbrass.com



- NOTES:
- 1) HARNESS IS TO ACT AS AN EXTENSION OR JUMPER WIRE. DEUTSCH PLUGS SHOULD BE WIRED 1 TO 1, 2 TO 2, ETC.
  - 2) HARNESS TO BE APPROXIMATELY 15 FT IN LENGTH.
  - 3) WIRE/INSULATION DIAMETER TO BE BETWEEN 0.053" AND 0.120".
  - 4) HARNESS MANUFACTURER TO ENSURE THERE ARE NO OPENS, CROSSES, OR SHORTS FOR EACH CIRCUIT. A VERIFYING INSPECTION SHEET TO BE PROVIDED FOR EACH SHIPMENT. ALL CRIMPS SHALL COMPLY WITH TERMINAL MANUFACTURER'S GUIDELINES.

ITEM NO.	P/N	DESCRIPTION	QTY.
8		SLEEVING - EXPANDABLE, BLACK BRAIDED	AS REQ'D
7		IDENTIFICATION LABEL - MANUFACTURER, MFG DATE, P/N, REV	2
6		ADHESIVE LINED HEAT SHRINK, UV STABLE, RATED -40F TO +185F	AS REQ'D
5		SXL WIRE CU, 18-AWG HIGH TEMP 125°C, VARIOUS COLORS	AS REQ'D
4		DEUTSCH LOCK, WM-125	2
3		SOLID CRIMP SOCKET CONTACT, DEUTSCH #0462-201-20141	24
2		DEUTSCH DT1M06-125C (DEUTSCH PLUG, C KEY, GREEN)	1
1		DEUTSCH DT1M06-125B-E007 (EXTENDED DEUTSCH PLUG, B KEY, BLACK)	1

**ELKHART BRASS**  
Fire Fighting Equipment

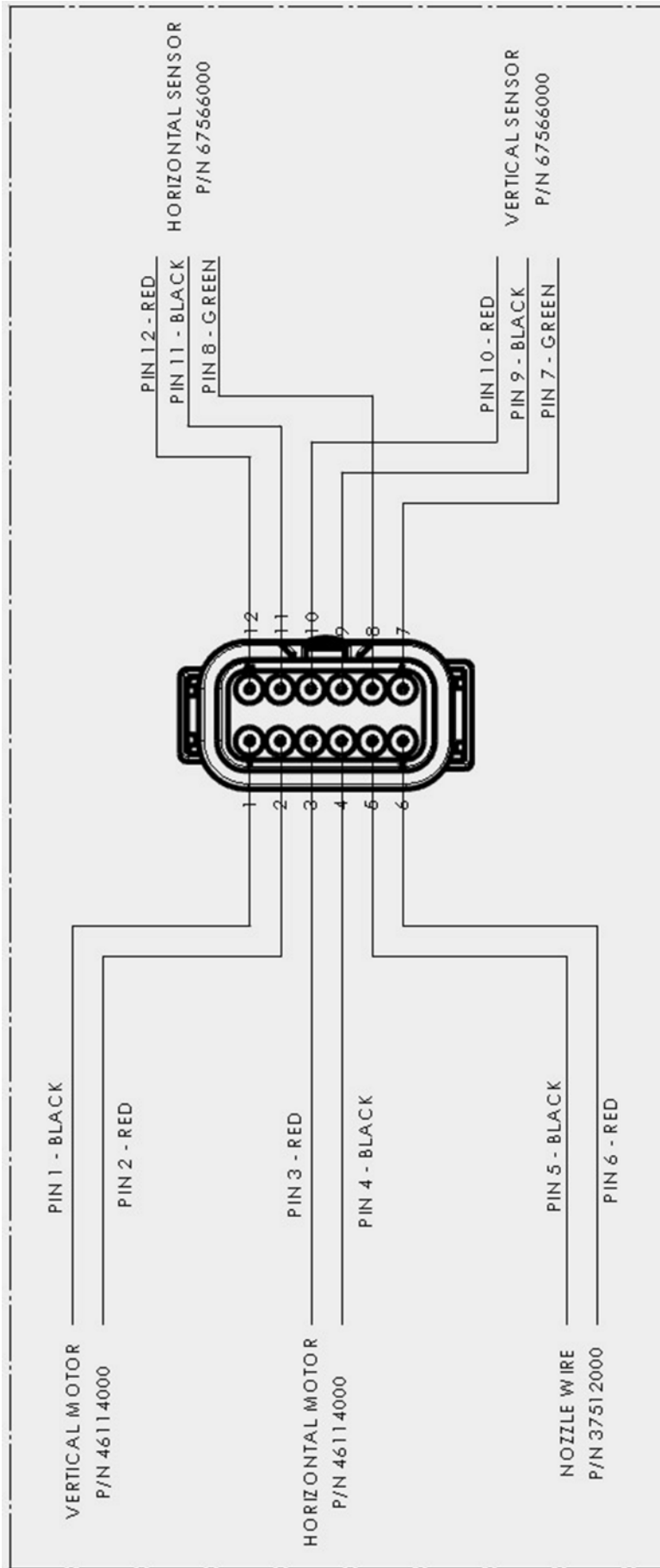
DATE: 11/21/2016  
REV: 0.03

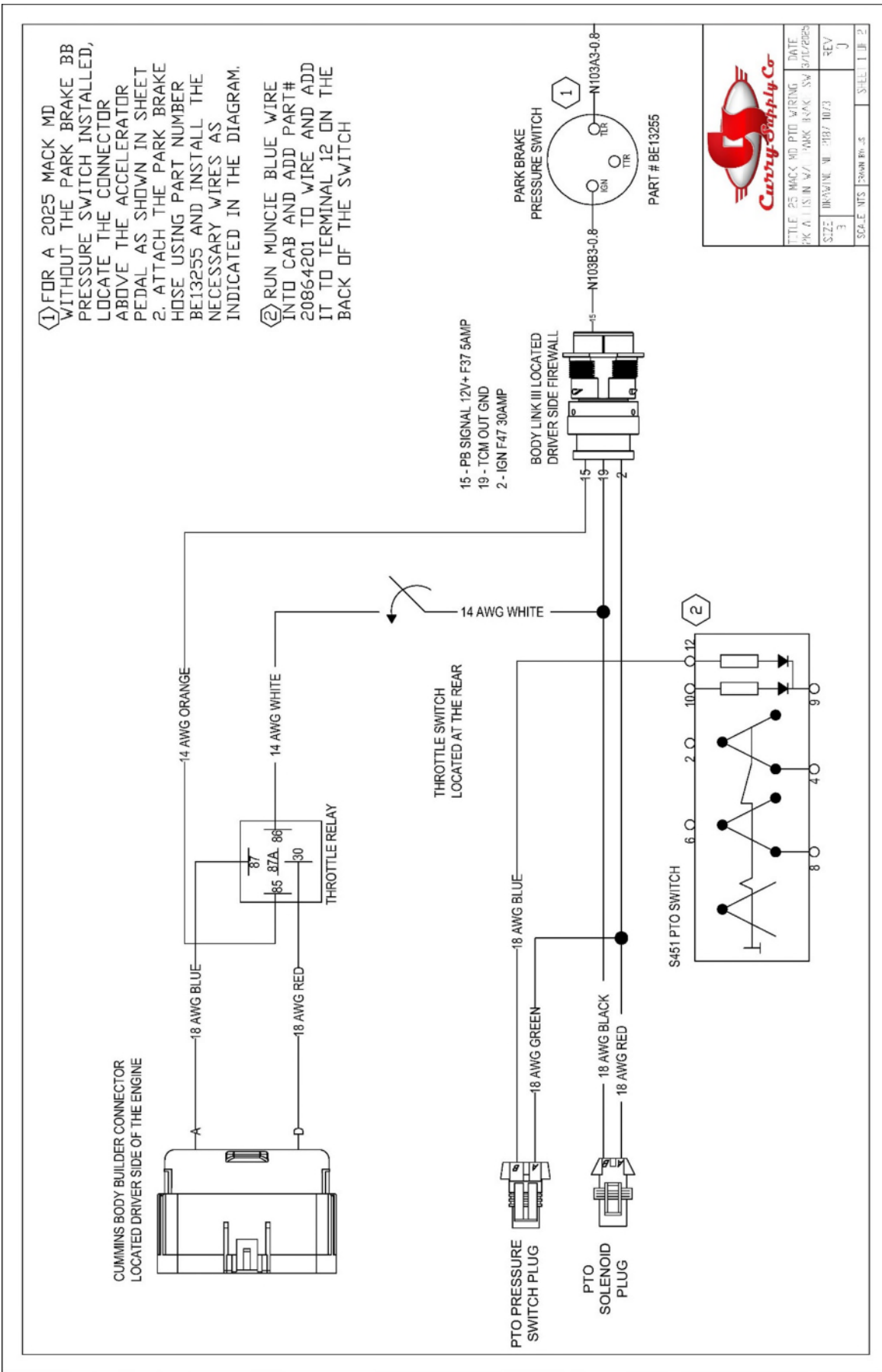
DESCRIPTION: HARNESS - MODULE / MONITOR (15FT)

SIZE: 8100 HD

REVISION: B 37522000 REL

CAD SCALE: 1:1 SHEET 1 OF 1









**Curry Supply Co.**

TITLE: B8: MUCK MC FULL WIRING	JA L
BK ALISSON W/O PARK BRAKE SW 2/16/2025	
SIZE: DRAWING NO: 2187-273	REV: 0
SCALE: NTS	SHEET: 2 OF 2

