

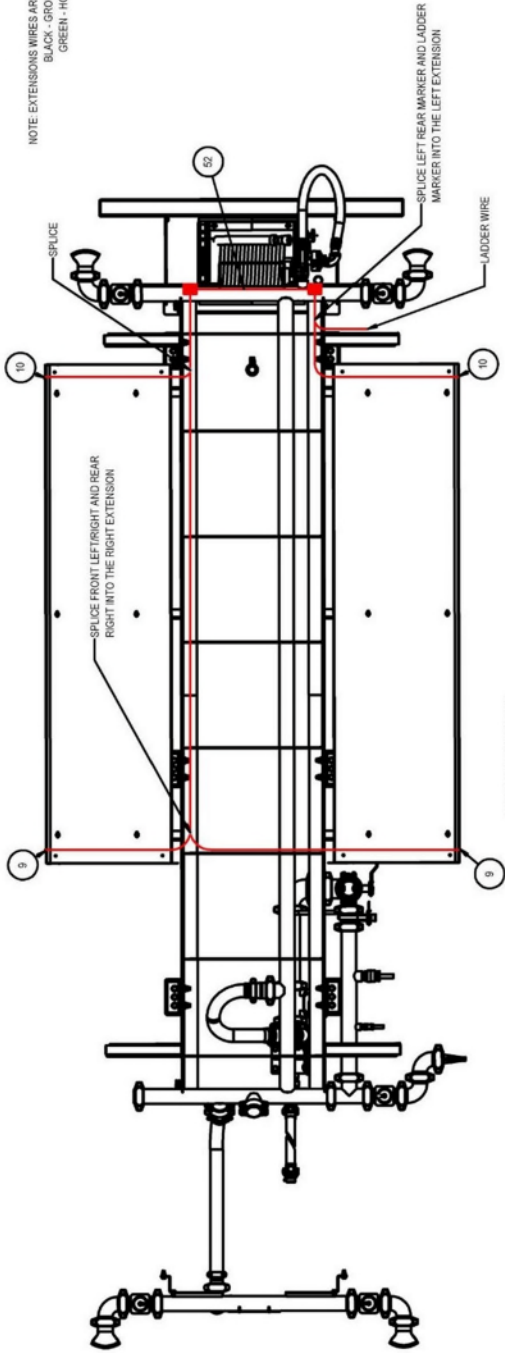
Water Truck On Road PTO Drive Schematics

Water Tank 4k Gal Gen IV – Electric Diagram SCH1-1	Page 2
Water Tank 4k Gal Gen IV – Airline Diagram SCH1-2	Page 3
Air Compressor Wiring/Air Connection SCH2-1	Page 4
Water Truck Harness/Wiring Diagram SCH3-1	Page 5
Water Truck Harness/Wiring Diagram SCH3-2	Page 6
Allison Transmission, PTO Wiring, Water Truck SCH4-1	Page 7
Allison PTO Wiring, Automatic Transmission SCH4-2	Page 8
Mack MD PTO Wiring SCH5-1	Page 9
Mack Water, Stationary Throttle SCH5-2	Page 10
Ford F650 Water Truck Wiring Diagram SCH6-1	Page 11
Ford F650 & F750 Wire Harness Schematic SCH6-2	Page 12
Ford 2 on 2 Compressor Layout SCH7-1	Page 13
Elkhart Nitro Joystick Electric SCH8-1	Page 14
Elkhart Nitro Position Sensor SCH8-2	Page 15
Elkhart Nitro Monitor Harness SCH8-3	Page 16
Elkhart Nitro Connector Pin Diagram SCH8-4	Page 17
Mack MD Wiring 2K Allison w Park Brake Switch SCH9-1	Page 18
Mack MD Wiring 2K Allison w Park Brake Switch SCH9-2	Page 19
Mack MD Wiring 2K Allison w Park Brake Switch SCH10-1	Page 20

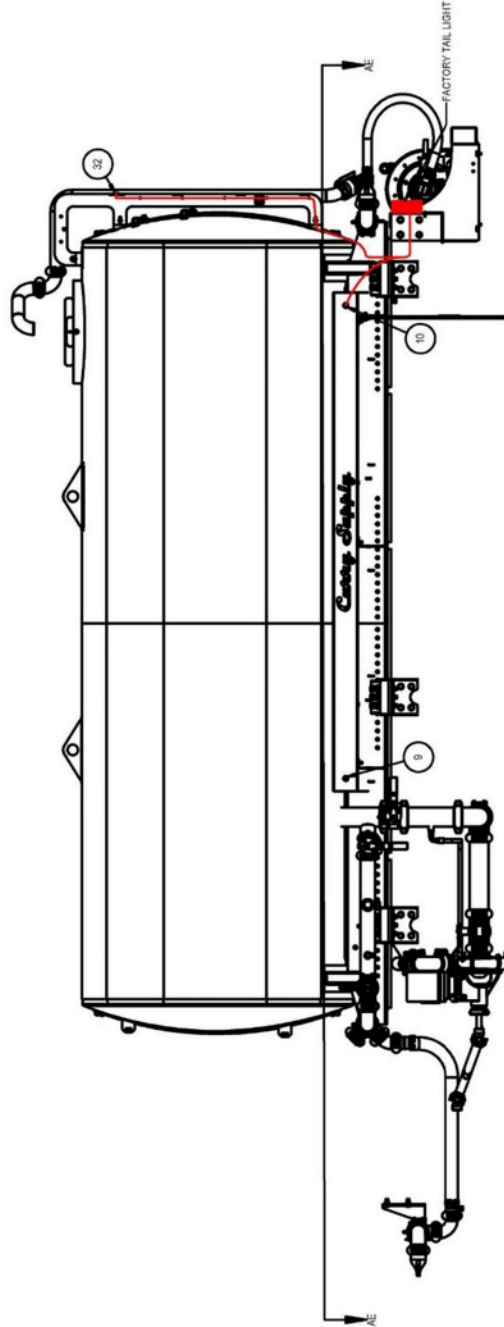
CAUTION

PLEASE CONTACT CURRY SUPPLY COMPANY BEFORE ATTEMPTING ANY CHANGES TO THE ELECTRICAL SYSTEMS. DOING SO MAY CAUSE EQUIPMENT DAMAGE OR VOID WARRANTY.

NOTE: EXTENSIONS WIRES ARE BLACK AND GREEN.
BLACK - GROUND
GREEN - HOT



1/4" AIR LINE SCHEMATIC
SECTION A-E
SCALE 1:20



CONTROLLED DOCUMENT

PROPRIETARY AND CONFIDENTIAL

THE INFORMATION CONTAINED IN THIS DRAWING IS THE SOLE PROPERTY OF CURRY SUPPLY COMPANY. ANY REPRODUCTION IN PART OR AS A WHOLE WITHOUT THE WRITTEN PERMISSION OF CURRY SUPPLY COMPANY IS PROHIBITED.

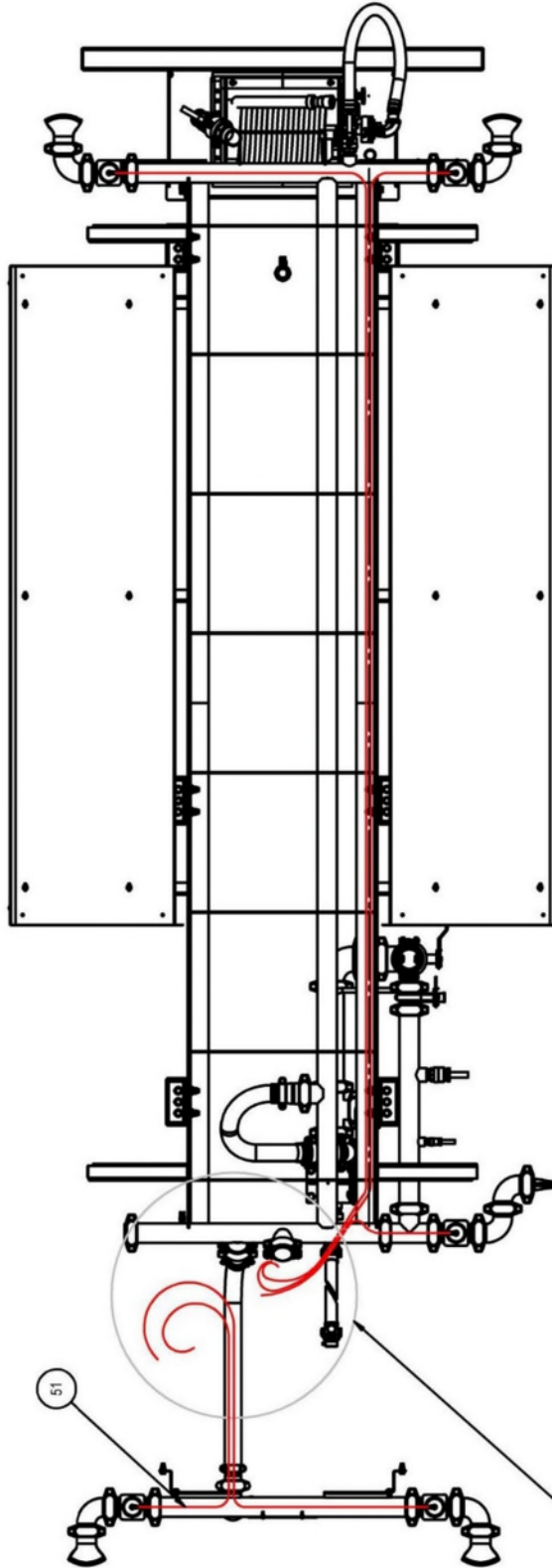
NAME	DATE
MODEL BY: MLC	09/17/19
DRAWN BY: MLC	09/17/19
ENG APPR:	
MFG APPR:	
Q.A.	
COMMENTS:	

Curry Supply Co.

TITLE: WATER TANK, 4,000 GAL.
GEN IV - ELECTRIC DIAGRAM

SIZE: C PART NO. 1815-1000

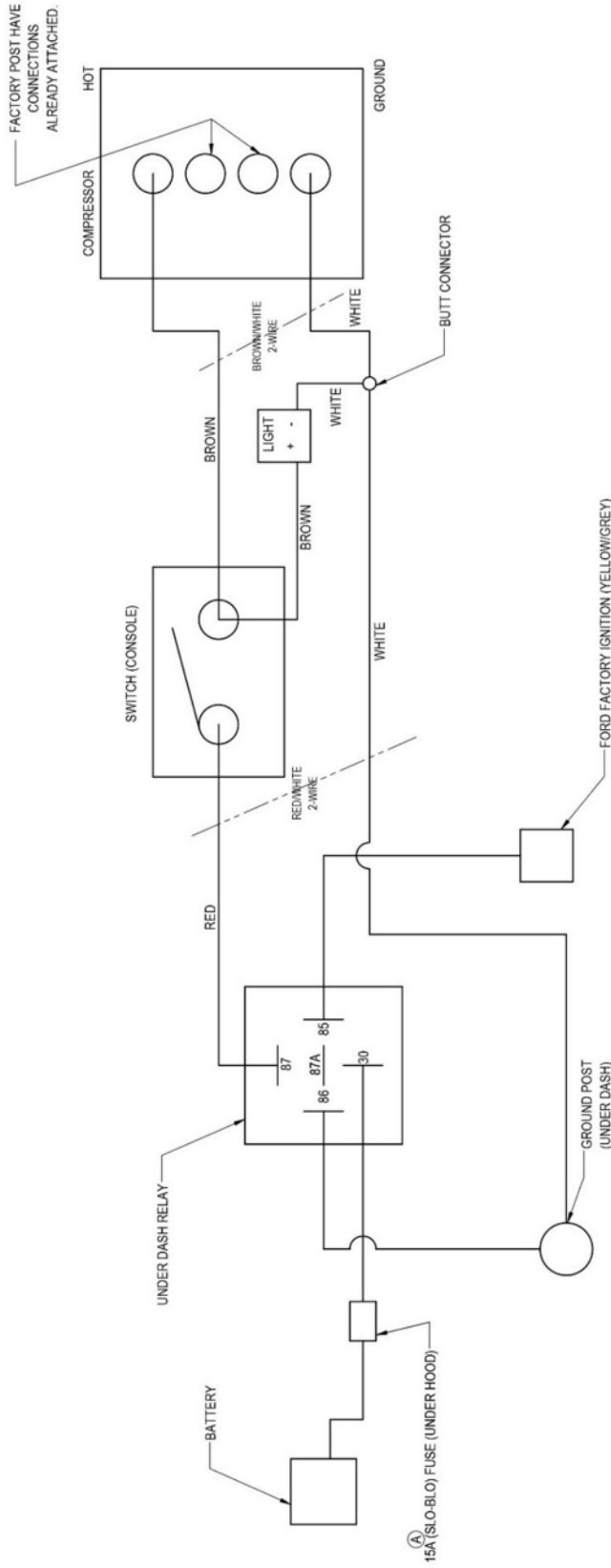
REV: 0



1/4" AIR LINE DIAGRAM
SECTION L-L
SCALE 1:20

RUN LINES THROUGH THE BOTTOM OF THE CAB INTO THE CONTROL SWITCHES.
NOTE: DIFFERENT CHASSIS MODELS MAY HAVE DIFFERENT SWITCH LOCATIONS.
ENTER THE CAB AT THE BEST LOCATION FOR THE SWITCH LAYOUT THAT DOES NOT REQUIRE ANY SPLICING.

		NAME	DATE
MODEL BY:	MLC	MLC	09/17/19
DRAWN BY:	MLC	MLC	09/17/19
ENG APPR.			
MFG APPR.			
O.A.			
COMMENTS:			
<p>PROPRIETARY AND CONFIDENTIAL THE INFORMATION CONTAINED IN THIS DRAWING IS THE SOLE PROPERTY OF CURRY SUPPLY COMPANY. ANY REPRODUCTION IN PART OR AS A WHOLE WITHOUT THE WRITTEN PERMISSION OF CURRY SUPPLY COMPANY IS PROHIBITED.</p>			
TITLE: WATER TANK, 4,000 GAL. GEN IV - AIR LINE DIAGRAM		SIZE	REV
		B	0
		PART NO.	SHEET 2 OF 5
		1815-1000	



REVISIONS			
ZONE REV.	DESCRIPTION	DATE	APPROVED ECR #
B4	A	UPDATED FUSE SIZE AND TYPE	10/04/19 MLC N/A

Curry Supply Co.

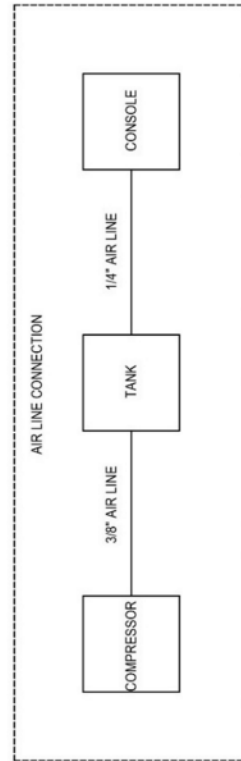
MODEL BY: MLC
 DRAWN BY: MLC 06/08/18
 ENG. APPR.
 MFG APPR.
 Q.A.

TITLE: ON ROAD WATER AIR COMPRESSOR WIRING/AIR CONNECTION

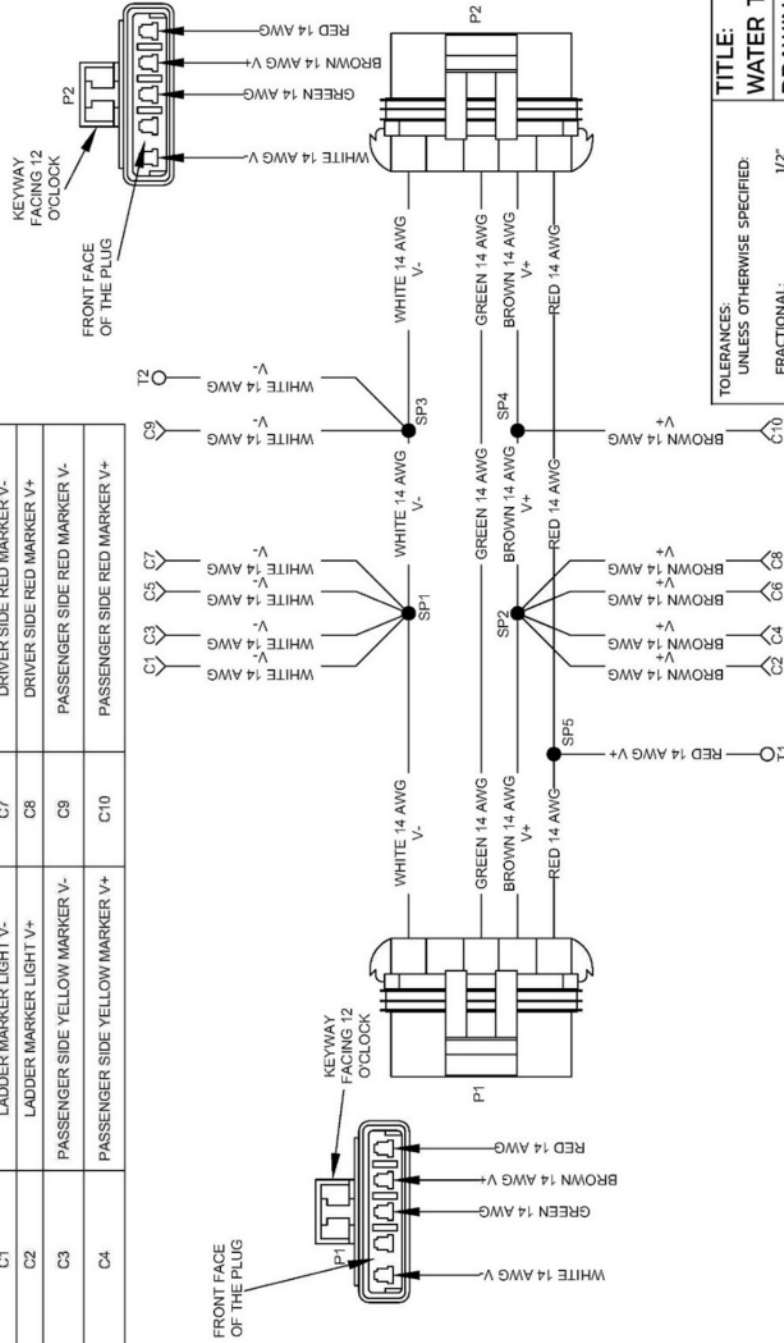
SIZE: **B** PART NO. 1630-1900 REV

COMMENTS: PROPRIETARY AND CONFIDENTIAL
 THE INFORMATION CONTAINED IN THIS DRAWING IS THE SOLE PROPERTY OF CURRY SUPPLY COMPANY. ANY REPRODUCTION IN PART OR AS A WHOLE WITHOUT THE WRITTEN PERMISSION OF CURRY SUPPLY COMPANY IS PROHIBITED.

SHEET 1 OF 1



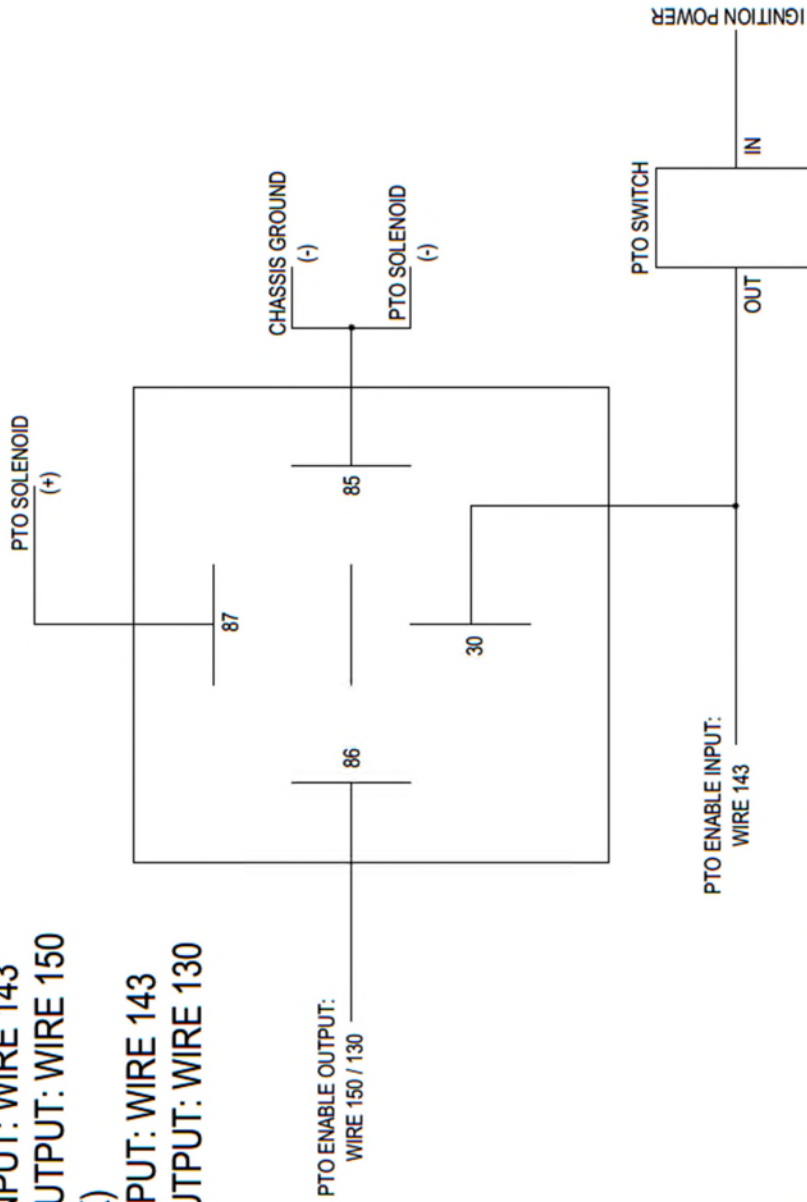
LABEL	DESCRIPTION	LABEL	DESCRIPTION
P1	DRIVER REAR TAIL LIGHT	C5	DRIVER SIDE YELLOW MARKER V-
P2	HARNESS TIE IN	C6	DRIVER SIDE YELLOW MARKER V+
C1	LADDER MARKER LIGHT V-	C7	DRIVER SIDE RED MARKER V-
C2	LADDER MARKER LIGHT V+	C8	DRIVER SIDE RED MARKER V+
C3	PASSENGER SIDE YELLOW MARKER V-	C9	PASSENGER SIDE RED MARKER V-
C4	PASSENGER SIDE YELLOW MARKER V+	C10	PASSENGER SIDE RED MARKER V+



TITLE:		WATER TRUCK HARNESS/WD	
DRAWING NO.:		2187-1004	
REV.:		0	
UNITS:	INCHES	SCALE:	NTS
MODEL BY:		JS 01/24/23	
DRAWN BY:		JS 01/24/23	
<small>TOLERANCES: UNLESS OTHERWISE SPECIFIED: FRACTIONAL: 1/2" ANGULAR: 1" TWO PLACE DECIMAL: .01" THREE PLACE DECIMAL: .005" PROPRIETARY AND CONFIDENTIAL THE INFORMATION CONTAINED IN THIS DRAWING IS THE SOLE PROPERTY OF CURRY SUPPLY CO. ANY REPRODUCTION IN PART OF AS A WHOLE WITHOUT THE WRITTEN PERMISSION OF CURRY SUPPLY CO IS PROHIBITED.</small>			

1000/2000 SERIES (2K)
 12 PIN CONNECTOR
 INPUT: WIRE 143
 OUTPUT: WIRE 150

3000/4000 SERIES (2K / 4K)
 12 PIN CONNECTOR
 INPUT: WIRE 143
 OUTPUT: WIRE 130



NOTE: RELAY IS MOUNTED UNDER THE HOOD ON THE FIREWALL.

JOB NUMBER	UNLESS OTHERWISE SPECIFIED:	NAME	DATE
PART NO.	DIMENSIONS ARE IN INCHES	MLC	02/19/20
QUANTITY	TOLERANCES: FRACTIONAL: 1/8"		
CUSTOMER	ANGULAR: MACH: BEND ± 1°		
DESIGN STATUS	TWO PLACE DECIMAL ± 01		
THICKNESS	THREE PLACE DECIMAL ± .005		
UNITS	ALL TOLERANCES ARE ± 1/8" UNLESS NOTED.		
APPLICATION	MATERIAL		
	Process		
	DO NOT SCALE DRAWING		

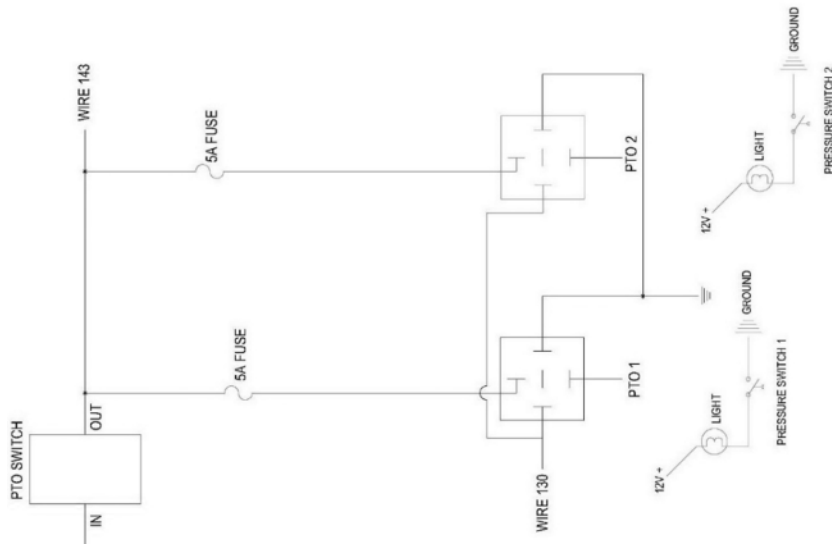
	
TITLE: PTO WIRING, ALLISON TRANSMISSION, WATER TRUCK	
SIZE	REV
A	1630-2900
SHEET 1 OF 2	

CONTROLLED DOCUMENT

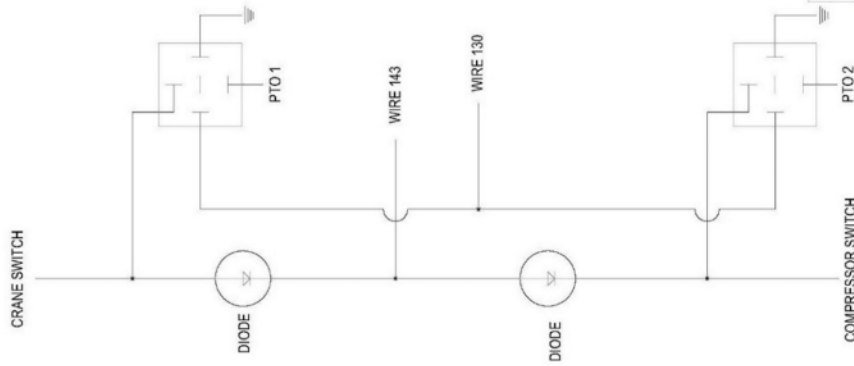
ENGINEER:
 DATE:

PROPRIETARY AND CONFIDENTIAL
 THE INFORMATION CONTAINED IN THIS DRAWING IS THE SOLE PROPERTY OF CURRY SUPPLY COMPANY. ANY REPRODUCTION IN PART OR AS A WHOLE WITHOUT THE WRITTEN PERMISSION OF CURRY SUPPLY COMPANY IS PROHIBITED.

DUEL PTO ALLISON AUTO 1-SWITCH



DUEL PTO ALLISON AUTO 2-SWITCH



DIODE ASSEMBLY
21698

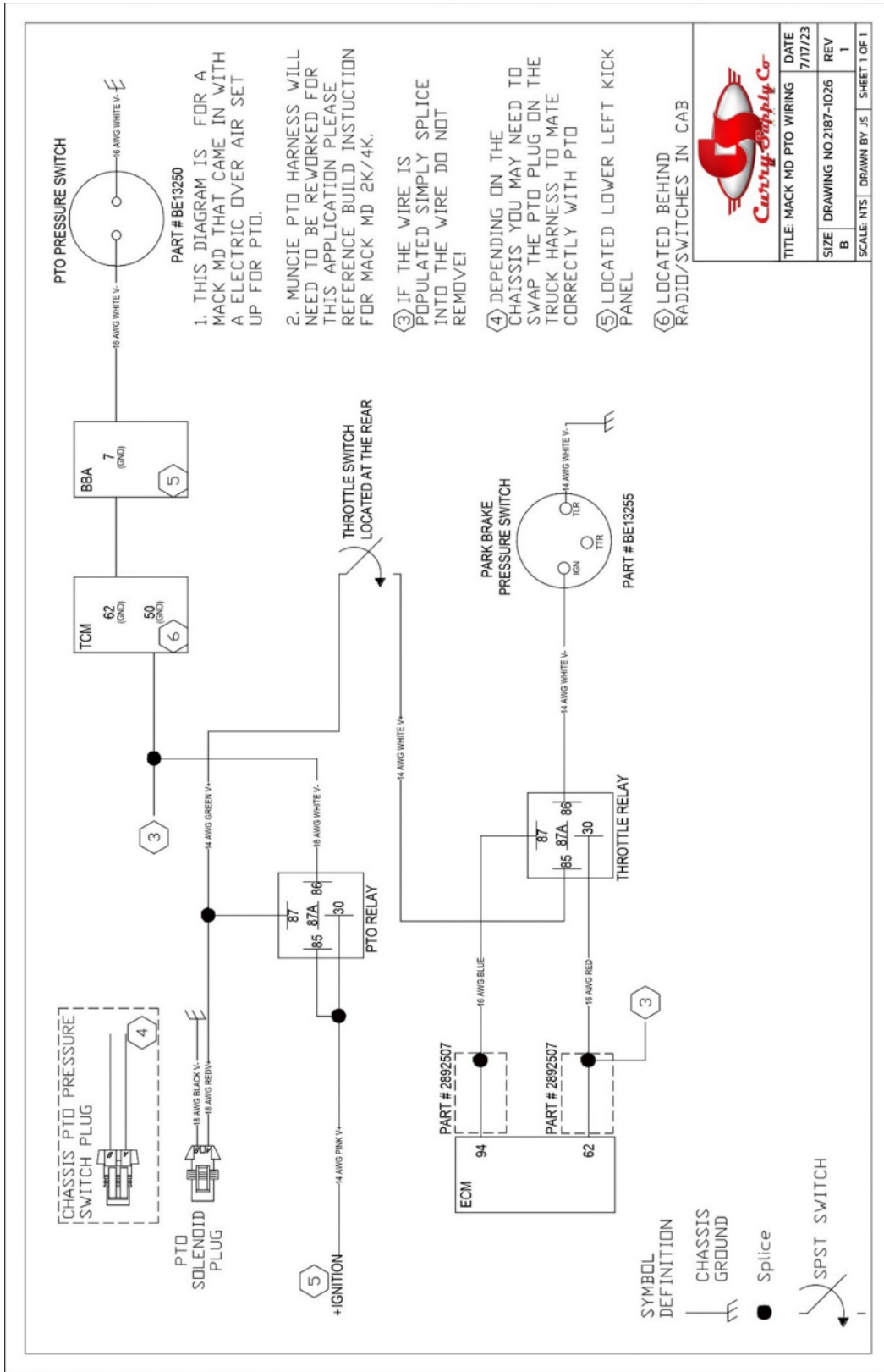


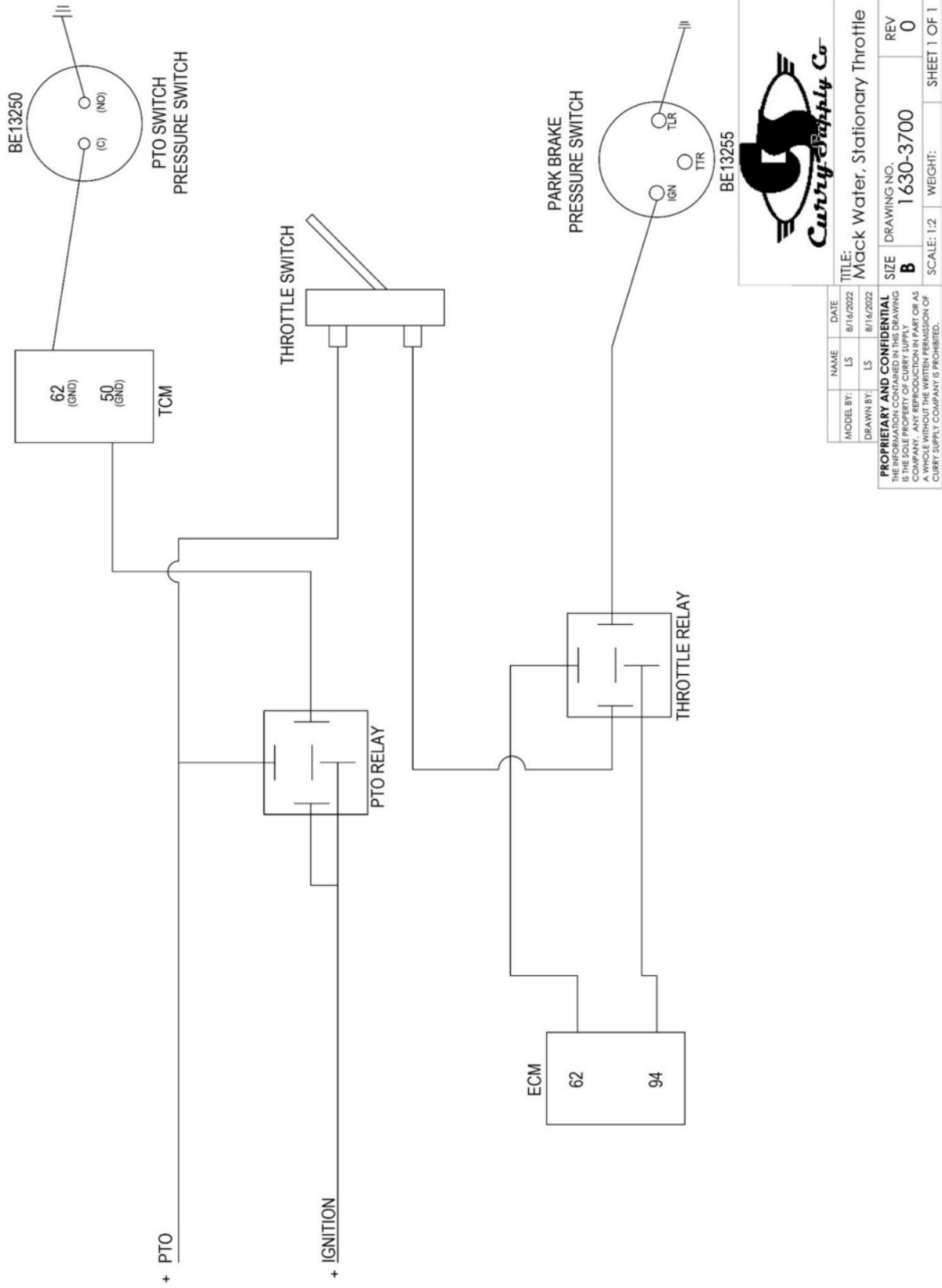
Curry Supply Co

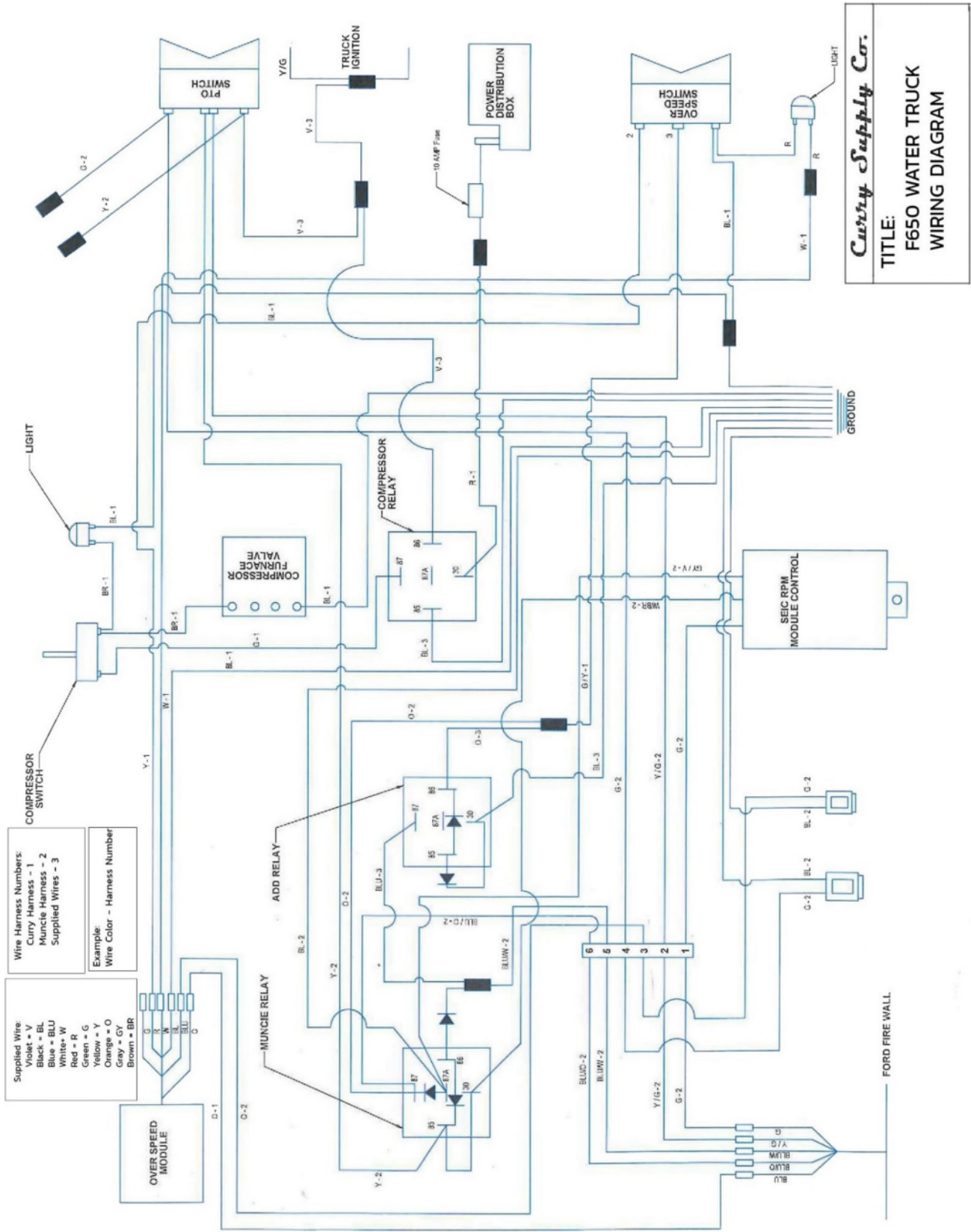
TITLE: ALLISON PTO WIRING	
SIZE B	DRAWING NO. 1630-2900
REV MLC 2/21/20	
DRAWN BY: MLC 2/21/20	

CONTROLLED DOCUMENT

PROPRIETARY AND CONFIDENTIAL
THE INFORMATION CONTAINED IN THIS DRAWING IS THE SOLE PROPERTY OF CURRY SUPPLY COMPANY. ANY REPRODUCTION IN PART OR AS A WHOLE WITHOUT THE WRITTEN PERMISSION OF CURRY SUPPLY COMPANY IS PROHIBITED.







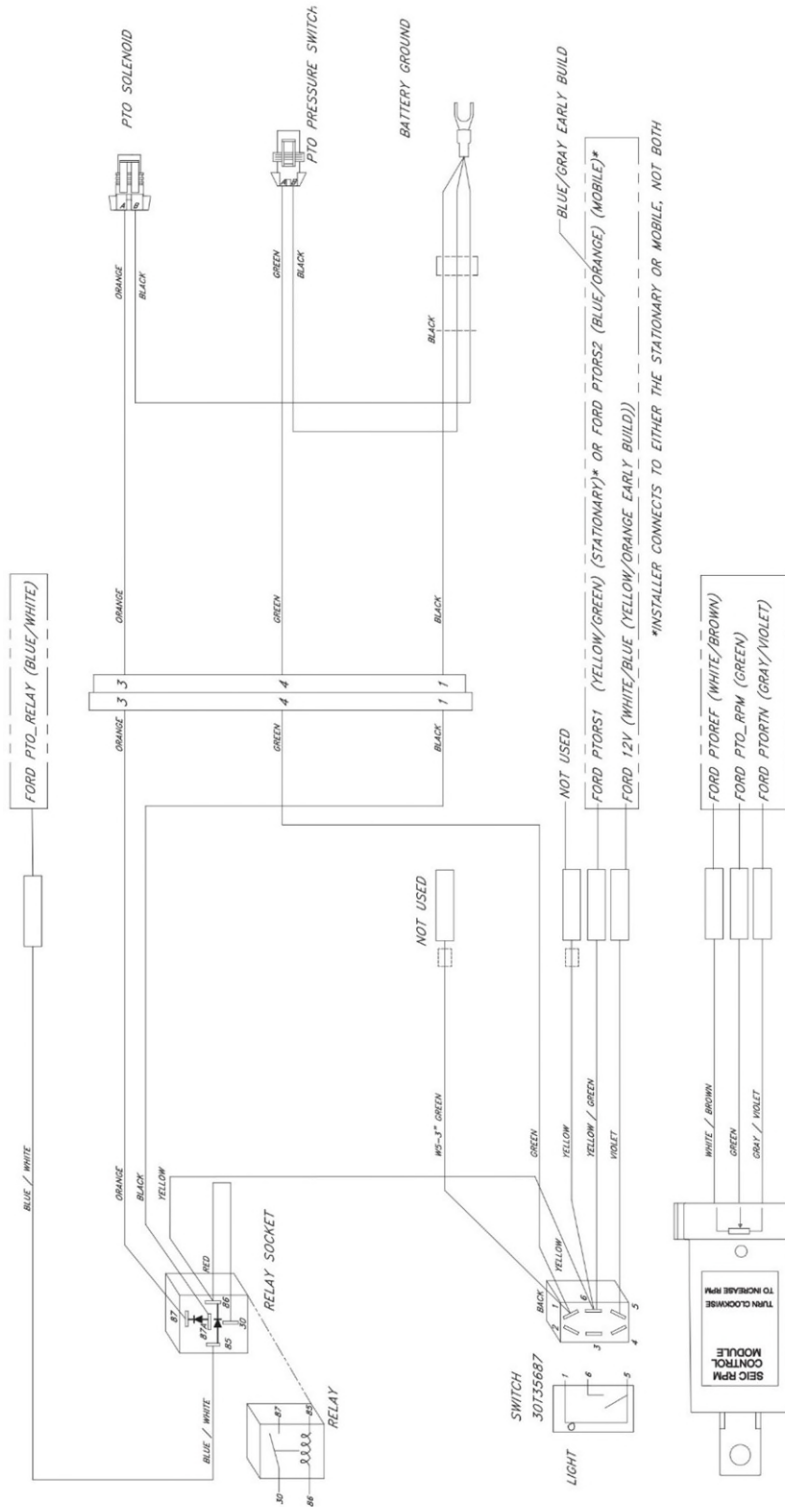
Supplied Wire:
 Violet = V
 Black = BL
 Blue = BLU
 White = W
 Red = R
 Green = G
 Yellow = Y
 Orange = O
 Gray = GF
 Brown = BR

Wire Harness Numbers:
 Curry Harness - 1
 Muncie Harness - 2
 Supplied Wires - 3

Example:
 Wire Color - Harness Number

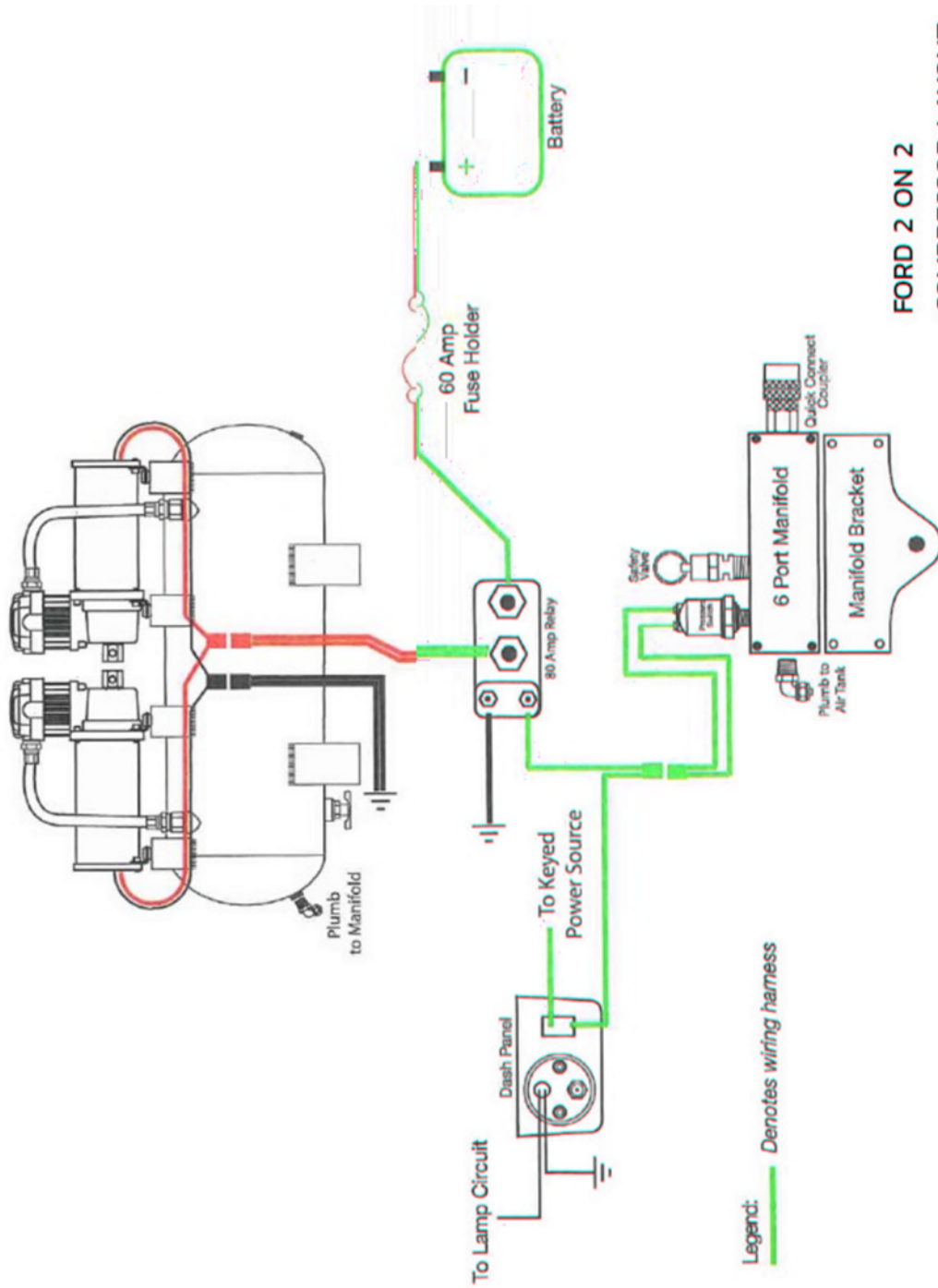
Curry Supply Co.
TITLE:
F650 WATER TRUCK
WIRING DIAGRAM

FR6Q-F1209-D3*X Wire Harness Schematic - (34T41671) 2016 & Earlier F-250-F-550 Super Duty Diesel Stationary F-650/750 (2012-2015 with SEIC Controls) OR Mobile Mode Application



FR6Q1209D3*X WIRE HARNESS #34T41671 Wire Color, Pin#, Circuit # Reference (Mobile OR Stationary Mode)

Harness Wire Color	Circuit Intent	Ford Wire Tag	PCM Pin	Circuit No.	Ford Wire Color	
					Stationary Mode	Mobile Mode
Blue/White	Output	PTO_RELAY	C-11	CE326	Blue/White	Blue/White
Yellow/Green	Input (VPWR)	PTORS1/ PTORS2	C-06	CE912	Yellow/Green	Blue/Orange (Blue/Gray-Early Build)
White/Brown	Reference Voltage	PTOREF	C-55	LE434	White/Brown	White/Brown
Green	Input (Resistor)	PTO_RPM	C-08	CE914	Green	Green
Gray/Violet	PCM Ground	PTORTN	C-22	RE327	Gray/Violet	Gray/Violet
Violet	12Vdc Power				White/Blue (Yellow/Orange-Early Build)	White/Blue (Yellow/Orange-Early Build)



FORD 2 ON 2
COMPRESSOR LAYOUT

ELKHART BRASS

FIRE FIGHTING EQUIPMENT A SAFE FLEET BRAND

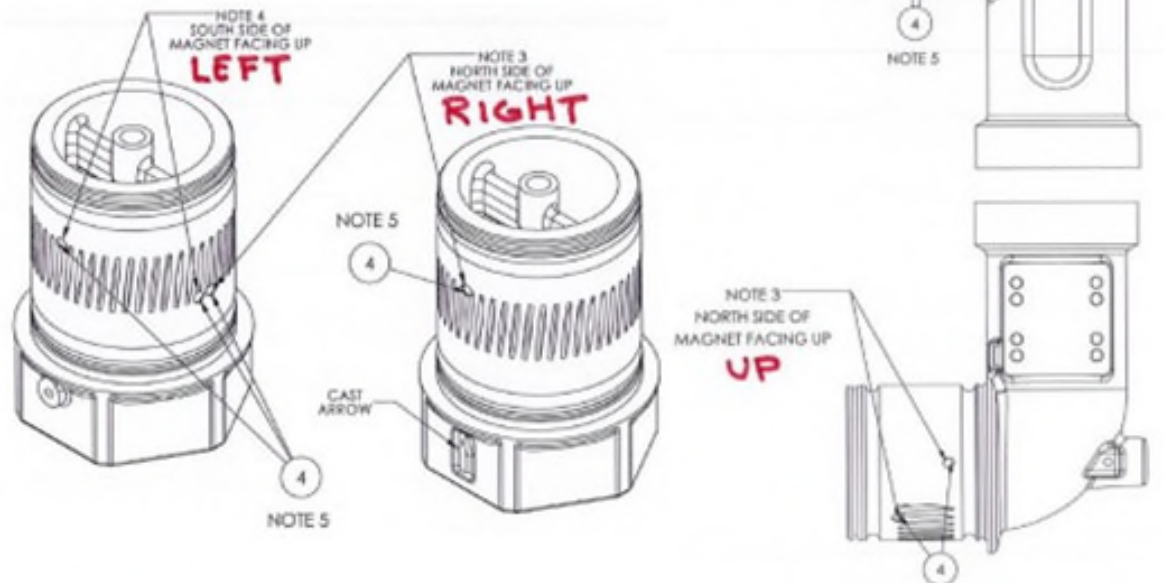
8100HD (Nitro HD) position sensor testing information

The position sensor used for controlling Vertical and Horizontal travel on the 8100HD (Nitro HD) is p/n 67566000.

- The sensors RED wire should have +5 volts on it.
- The sensors BLACK wire should be GROUND.
- The sensors GREEN wire should have;
 - Around +2.5v when no magnet is detected.
 - It should drop below +2.5 volts (around +1.5v) when detecting the North Pole of a magnet (RIGHT or UP).
 - It should go above +2.5 volts (around +3.5v) when detecting the South Pole of a magnet (LEFT or DOWN).

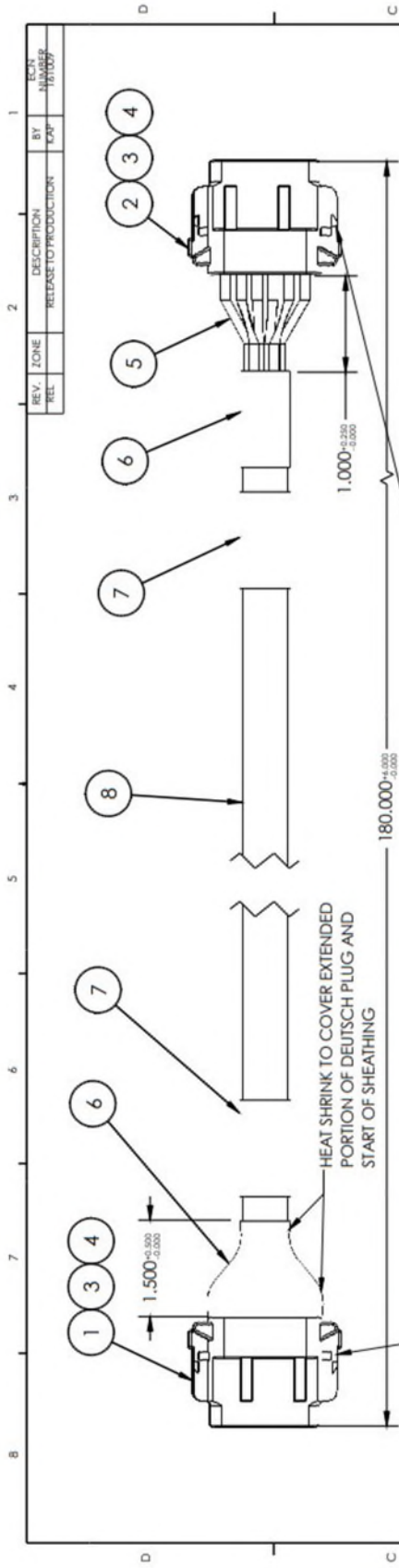
The magnets used on the 8100HD (Nitro HD) are p/n 46057000 and are positioned as follows.

- North Pole facing out for RIGHT and UP limits.
- South Pole facing out for LEFT and DOWN limits.



Last Revised 01/23/23

Elkhart Brass Mfg. Co., Inc. 1302 W. Beardsley Avenue • Elkhart, Indiana 46514 • 1-574-295-8330 • 1-800-346-0250
www.elkhartbrass.com



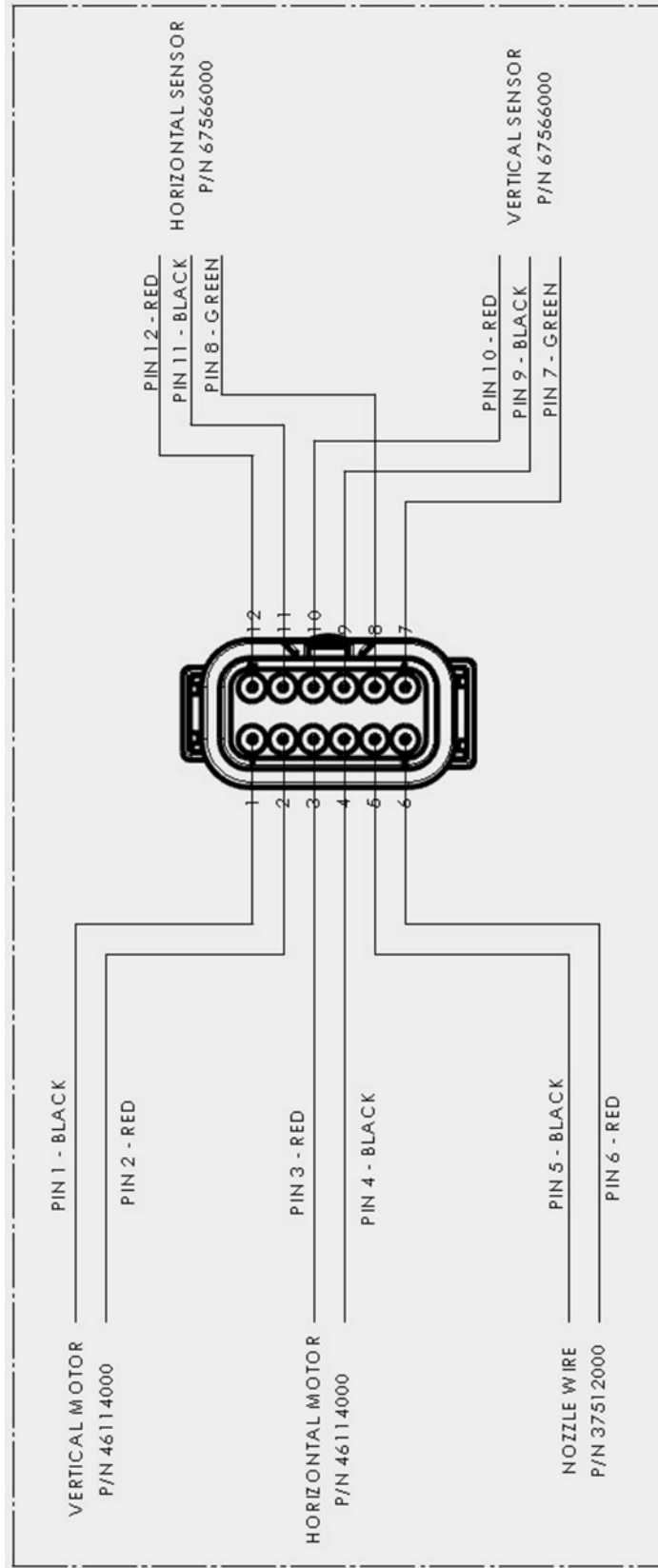
POSITION	WIRE COLOR	WIRE SIZE
1	RED	18 AWG
2	BLACK	18 AWG
3	BLUE	18 AWG
4	WHITE	18 AWG
5	ORANGE	18 AWG
6	GREEN	18 AWG
7	YELLOW	18 AWG
8	PURPLE	18 AWG
9	BROWN	18 AWG
10	RED/WHITE	18 AWG
11	BLACK/WHITE	18 AWG
12	BLUE/WHITE	18 AWG

POSITION	WIRE COLOR	WIRE SIZE
1	RED	18 AWG
2	BLACK	18 AWG
3	BLUE	18 AWG
4	WHITE	18 AWG
5	ORANGE	18 AWG
6	GREEN	18 AWG
7	YELLOW	18 AWG
8	PURPLE	18 AWG
9	BROWN	18 AWG
10	RED/WHITE	18 AWG
11	BLACK/WHITE	18 AWG
12	BLUE/WHITE	18 AWG

- NOTES:
- 1) HARNESS IS TO ACT AS AN EXTENSION OR JUMPER WIRE. DEUTSCH PLUGS SHOULD BE WIRED 1 TO 1, 2 TO 2, ETC.
 - 2) HARNESS TO BE APPROXIMATELY 15 FT IN LENGTH.
 - 3) WIRE/INSULATION DIAMETER TO BE BETWEEN 0.053" AND 0.120".
 - 4) HARNESS MANUFACTURER TO ENSURE THERE ARE NO OPENS, CROSSES, OR SHORTS FOR EACH CIRCUIT. A VERIFYING INSPECTION SHEET TO BE PROVIDED FOR EACH SHIPMENT. ALL CRIMPS SHALL COMPLY WITH TERMINAL MANUFACTURER'S GUIDELINES.

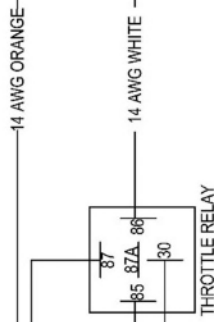
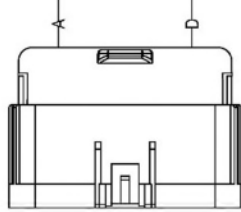
8	SLEEVING - EXPANDABLE, BLACK BRAIDED	AS REQ'D
7	IDENTIFICATION LABEL - MANUFACTURER, MFG DATE, P/N, REV	2
6	ADHESIVE LINED HEAT SHRINK, UV STABLE, RATED -40F TO +185F	AS REQ'D
5	SXL WIRE CU, 18-AWG HIGH TEMP 125 °C, VARIOUS COLORS	AS REQ'D
4	DEUTSCH LOCK, WM-125	2
3	SOLID CRIMP SOCKET CONTACT, DEUTSCH #0462-201-20141	24
2	DEUTSCH DTM06-12SC (DEUTSCH PLUG, C KEY, GREEN)	1
1	DEUTSCH DTM06-12SB-E007 (EXTENDED DEUTSCH PLUG, B KEY, BLACK)	1
ITEM NO.	P/N	QTY.
	DESCRIPTION	

ELKHART BRASS Fire Fighting Equipment	
DATE: 11/21/2016 DRAWN BY: CAP CHECKED BY:	REVISION: 0.03 PART NUMBER: B SIZE: 8100 HD CAD NO.:
ELKHART BRASS MFG. CO., INC. 1115 S. 10TH ST. W. DEPT. 100 WYOMING, WY 83901 TEL: 307.438.1111 FAX: 307.438.1112 WWW.ELKHARTBRASS.COM	DESCRIPTION: HARNESS - MODULE / MONITOR (15FT) SCALE: 1:1 SHEET 1 OF 1
MATERIAL: SEE NOTES FOR MATERIAL TOLERANCE UNLESS OTHERWISE SPECIFIED: DIMENSIONS ARE IN INCHES 3 PLACE DEC. ± 0.010" 4 PLACE DEC. ± 0.005" ANGLES ± 0.50°	MED. ANGLE PROJECTION



- ① FOR A 2025 MACK MD WITHOUT THE PARK BRAKE BB PRESSURE SWITCH INSTALLED, LOCATE THE CONNECTOR ABOVE THE ACCELERATOR PEDAL AS SHOWN IN SHEET BE13255 AND INSTALL THE NECESSARY WIRES AS INDICATED IN THE DIAGRAM.
- ② RUN MUNCIE BLUE WIRE INTO CAB AND ADD PART# 20864201 TO WIRE AND ADD IT TO TERMINAL 12 ON THE BACK OF THE SWITCH

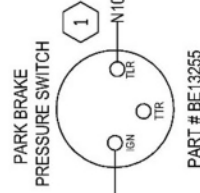
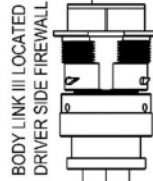
CUMMINS BODY BUILDER CONNECTOR
LOCATED DRIVER SIDE OF THE ENGINE



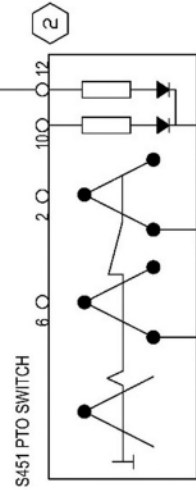
THROTTLE SWITCH
LOCATED AT THE REAR



15 - PB SIGNAL 12V+ F37 5AMP
19 - TCM OUT GND
2 - IGN F47 30AMP



PART # BE13255

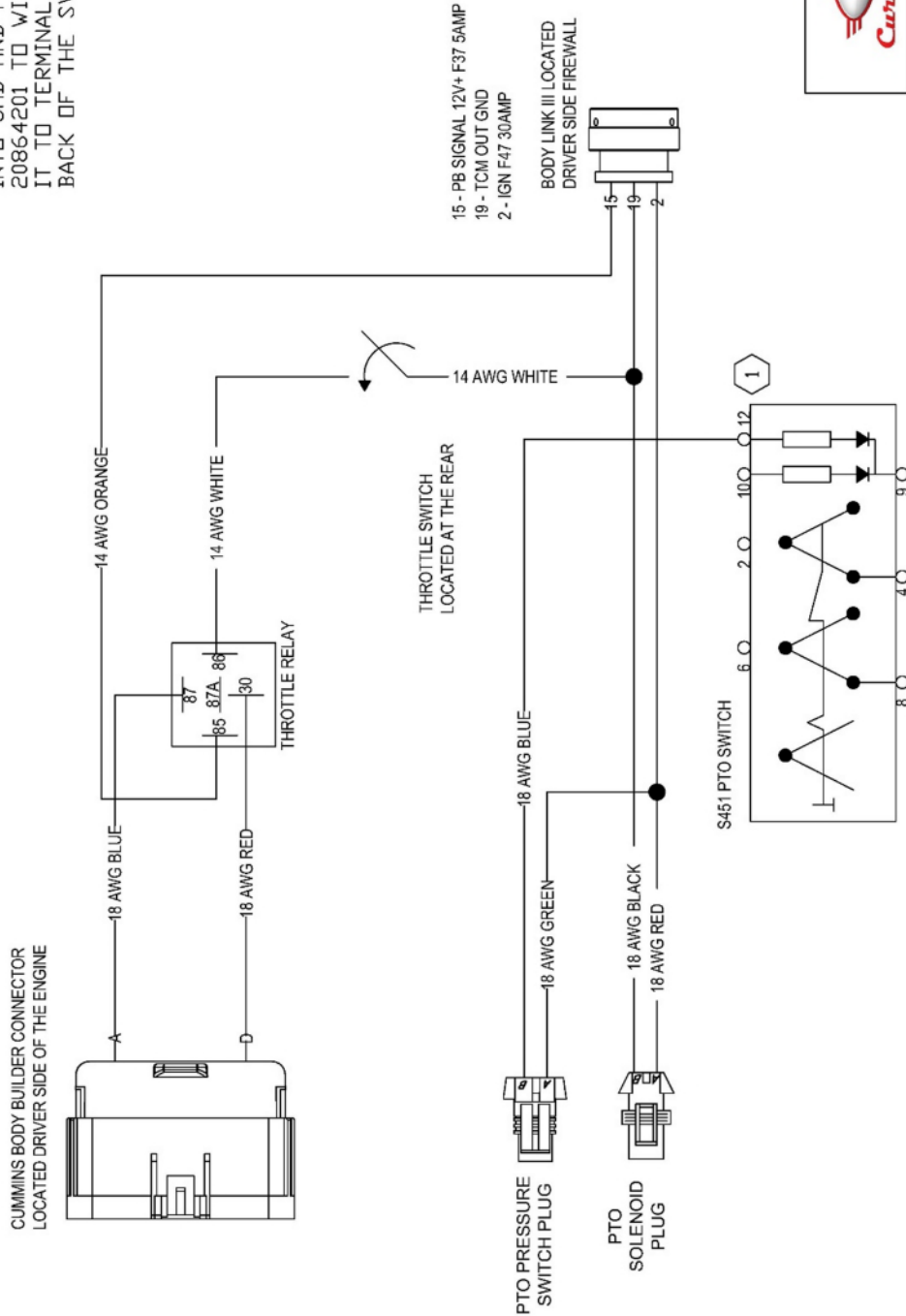


TITLE: 25 MACK MD PTO WIRING	DATE:
2K ALLISON W/D PARK BRAKE SW 5/2/2025	
SIZE: 30MMX101.PPT 10/3	REV: 0
SCALE: 1:1	SHEET 1 OF 2



TITLE	25 MACK VU 3.0 W/RENG	DATE	
PK #	SUN V/11 P/38C B/39C SW	REV	
SIZE	DRAWING NO. 2.07-1073	REV	C
B			
SCALE	NIS	2000 3/16	SEE 2 OF 2

① RUN MUNCIE BLUE WIRE INTO CAB AND ADD PART# 20864201 TO WIRE AND ADD IT TO TERMINAL 12 ON THE BACK OF THE SWITCH




TITLE	25 MACK MD PTO WIRING	DATE	3/12/2025
PK	A 1 IS IN 37 PARK BRAC SW	REV	J
SIZE	DRAWING W 3787 1017	REV	J
SCALE	NTS 1:2000 BR 38	SHEET	1 OF 1