

# Mechanic Trucks

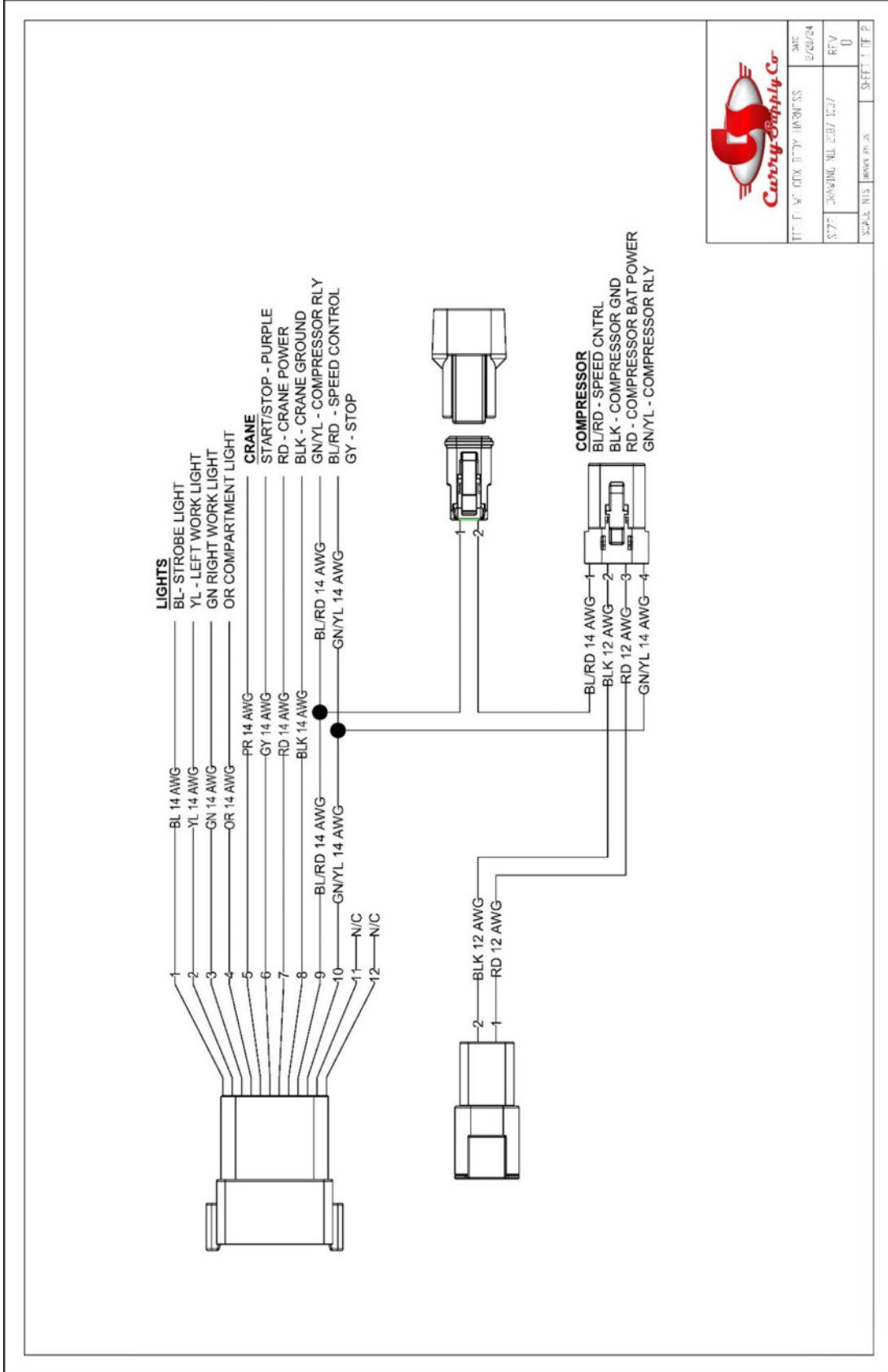

## Schematics

---

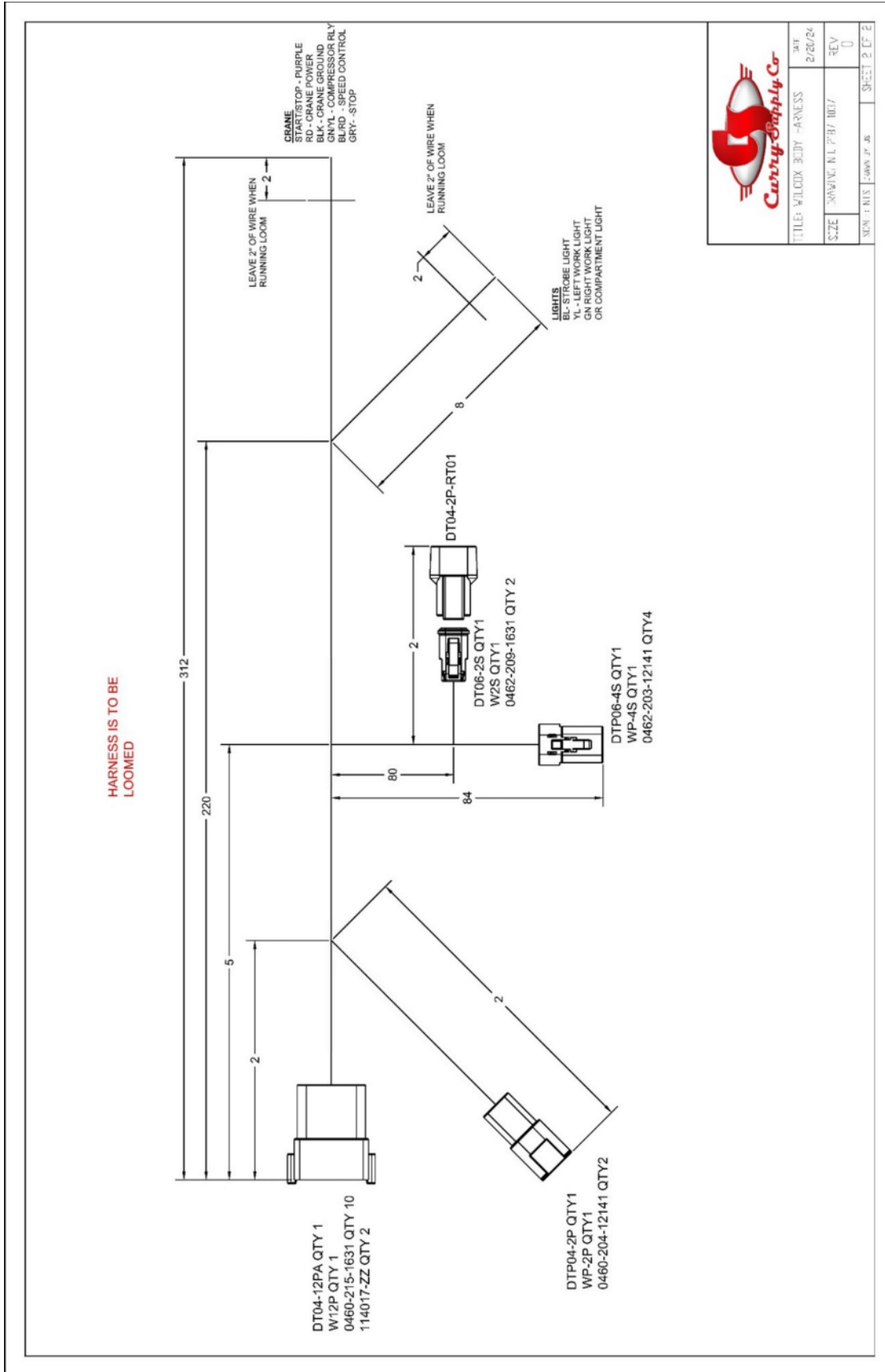
<a href="#">Wilcox Body Harness 2187-1037 SCH1-1</a>	<a href="#">Page 2</a>
<a href="#">Wilcox Body Harness 2187-1037 SCH1-2</a>	<a href="#">Page 3</a>
<a href="#">Peterbilt 2023 PTO Speed Control 2187-1034 SCH2-1</a>	<a href="#">Page 4</a>
<a href="#">Peterbilt 2023 PTO Speed Control 2187-1034 SCH2-2</a>	<a href="#">Page 5</a>
<a href="#">Peterbilt 2023 PTO Speed Control 2187-1034 SCH2-3</a>	<a href="#">Page 6</a>
<a href="#">Ford 2023+ Stellar Crane Wilcox Body 2187-1033 SCH3-1</a>	<a href="#">Page 7</a>
<a href="#">Ford 2023+ Stellar Crane Wilcox Body 2187-1033 SCH3-2</a>	<a href="#">Page 8</a>
<a href="#">Ford 2023+ Stellar Crane Wilcox Body 2187-1033 SCH3-3</a>	<a href="#">Page 9</a>
<a href="#">Ford 2023+ Stellar Crane Wilcox Body 2187-1033 SCH3-4</a>	<a href="#">Page 10</a>
<a href="#">Ram 2023 Stellar Crane Wilcox Body 2187-1036 SCH4-1</a>	<a href="#">Page 11</a>
<a href="#">Ram 2023 Stellar Crane Wilcox Body 2187-1036 SCH4-2</a>	<a href="#">Page 12</a>
<a href="#">Ram 2023 Stellar Crane Wilcox Body 2187-1036 SCH4-3</a>	<a href="#">Page 13</a>
<a href="#">Mack 2024 Mechanic 2187-1076 SCH5-1</a>	<a href="#">Page 14</a>
<a href="#">Mack 2024 Mechanic 2187-1076 SCH5-2</a>	<a href="#">Page 15</a>
<a href="#">Mack 2024 Mechanic 2187-1076 SCH5-3</a>	<a href="#">Page 16</a>

**CAUTION**

PLEASE CONTACT CURRY SUPPLY COMPANY BEFORE ATTEMPTING ANY CHANGES TO THE ELECTRICAL SYSTEMS. DOING SO MAY CAUSE EQUIPMENT DAMAGE OR VOID WARRANTY.

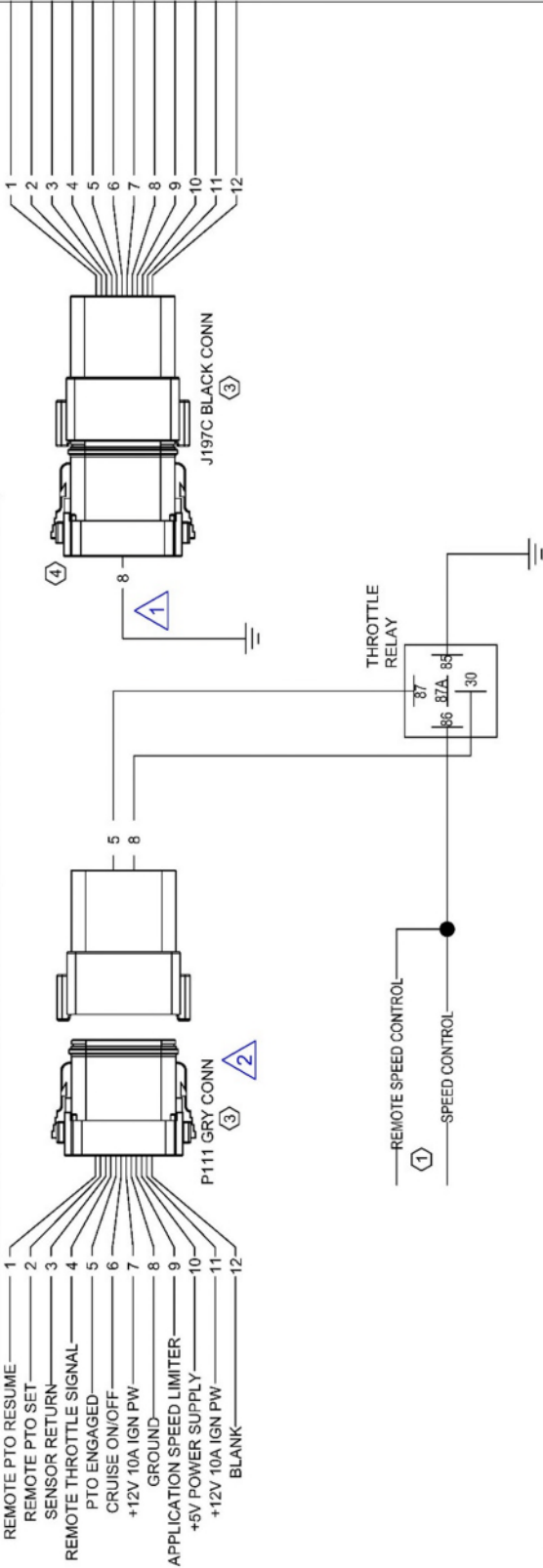
DATE	2/20/24
BY	RFV
SCALE	1:1
SHEET	1 OF 2





TITLE: WILDCAT BODY -HARNES	DATE: 2/20/24
SIZE: DRAWING: NLT P/B7 1017	REV: 0
NO. : 115	NO. OF SHEETS: 2

### REVISION TABLE

ZONE	REV	DESCRIPTION	DATE	APPROVED
	1	ADDED GROUND WIRE	02/20/2024	JS
	2	CHANGED LABEL	04/17/2024	JS

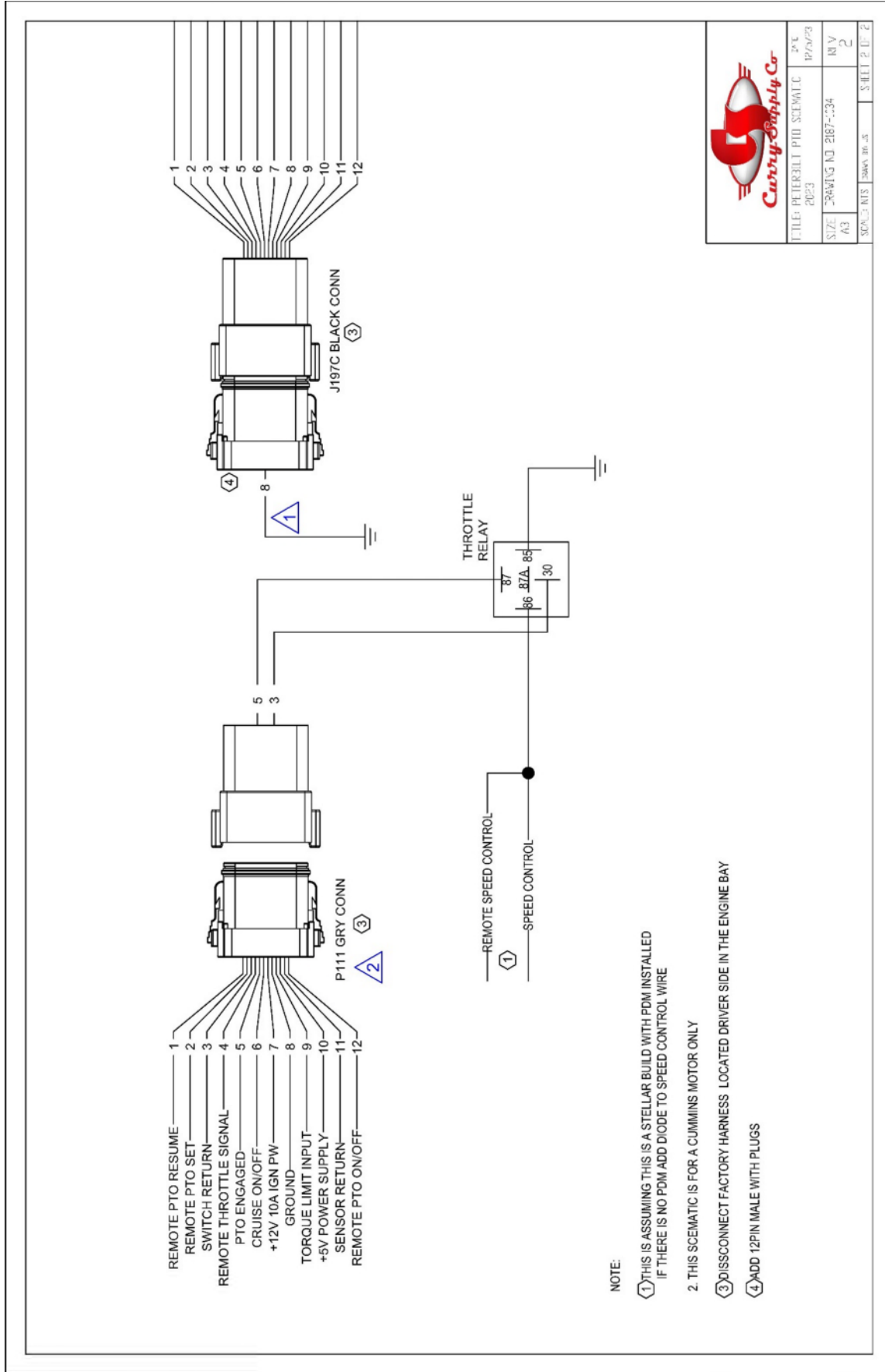


- NOTE:**
- ① THIS IS ASSUMING THIS IS A STELLAR BUILD WITH PDM INSTALLED IF THERE IS NO PDM ADD DIODE TO SPEED CONTROL
  - 2. THIS SCHEMATIC IS FOR A MX MOTOR ONLY
  - ③ DISCONNECT FACTORY HARNESS LOCATED DRIVER SIDE IN THE ENGINE BAY
  - ④ ADD 12PIN MALE WITH PLUGS



**Curry Supply Co.**

TITLE	PTO THROTTLE SCHEMATIC	DATE	12/2/23
DRAWN BY	2023	REVISED BY	RTV
SCALE	AS SHOWN	PROJECT NO.	2187-334
SCALE	NIS 1:2000 36-5	SCALE	1:1 2



		DATE	11/20/23
		FILE: PTO SCHEMATIC	2023
SIZE	A3	DRAWING NO	2187-034
REV	2	REV	1
SCALE	1:1	SHEET	2 OF 2



ARROW IS  
POINTING TO P111  
CONNECTOR  
LOCATED DRIVER  
SIDE ENGINE BAY

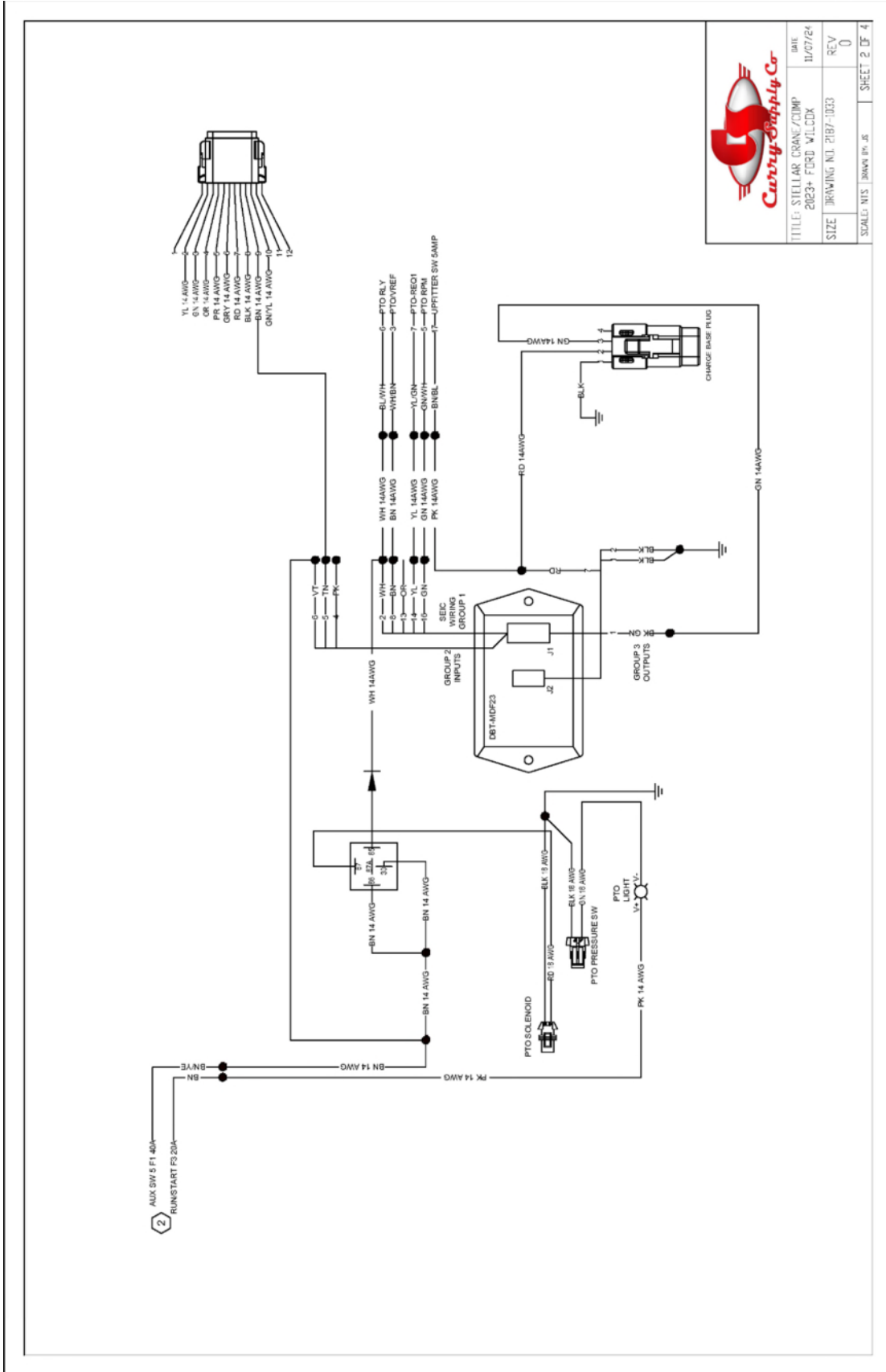
	
TITLE	PERFORM P111 SCHEMATIC
DATE	12/2/23
SIZE	A3
DRAWING NO.	PIB7-1034
SCALE	AS SHOWN
SHEET NO.	2 OF 2

NOTES:

- 1 LOCATION OF SEC WIRES ARE PASSENGER SIDE KICK PANEL
- 2 LOCATION OF LIFT/STOP SWITCH WIRES AND RESTART IGNITION IS LOCATED PASSENGER SIDE ENGINE COMPARTMENT
- 3 START STOP WIRES ARE LOCATED PASSENGER SIDE KICK PANEL. REMOVE J4 CONNECTOR AND LOCATE PIN 3 (STOP) AND BREAK THE CONNECTION AND TIE EACH SIDE TO THE RLY SHOWN. RLY SHALL BE LOCATED PASSENGER SIDE KICK PANEL.
- 4 REMOVE J4 CONNECTOR AND LOCATE PIN 4 (START) SPlice PR 14AWG SPlice PR 14AWG DIRECTLY TO PIN 4 (START).
- 5 USE BREAKER THAT COMES WITH COMPRESSOR



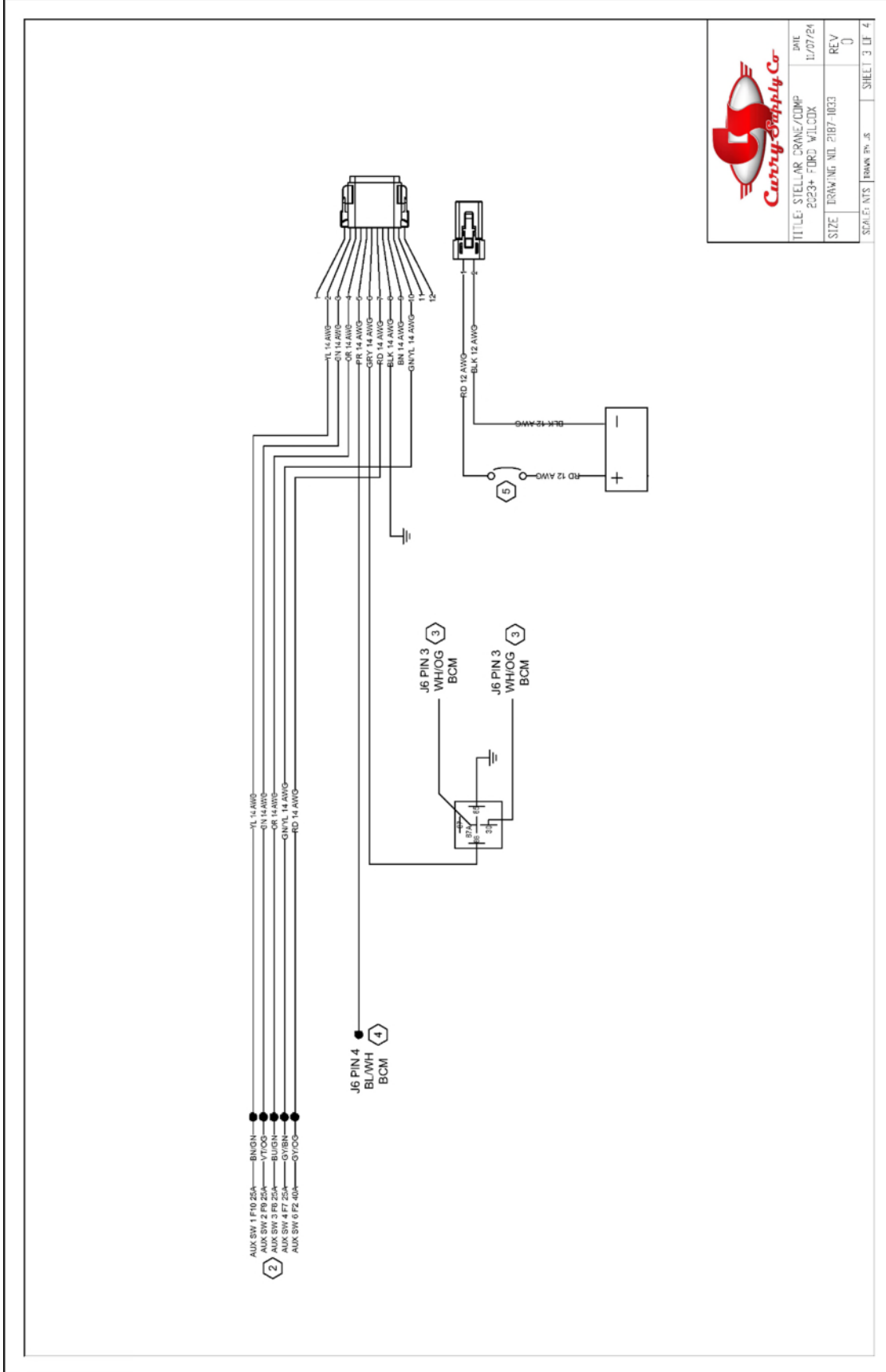
TITLE: STELLAR CRANE/CLIMP 2023+ FORD WILCOX	DATE: 11/01/24
SIZE: DRAWING NO. 2187-1033	REV: 0
SCALE: N.T.S.	ISSUED BY: JS
	SHEET 1 OF 4



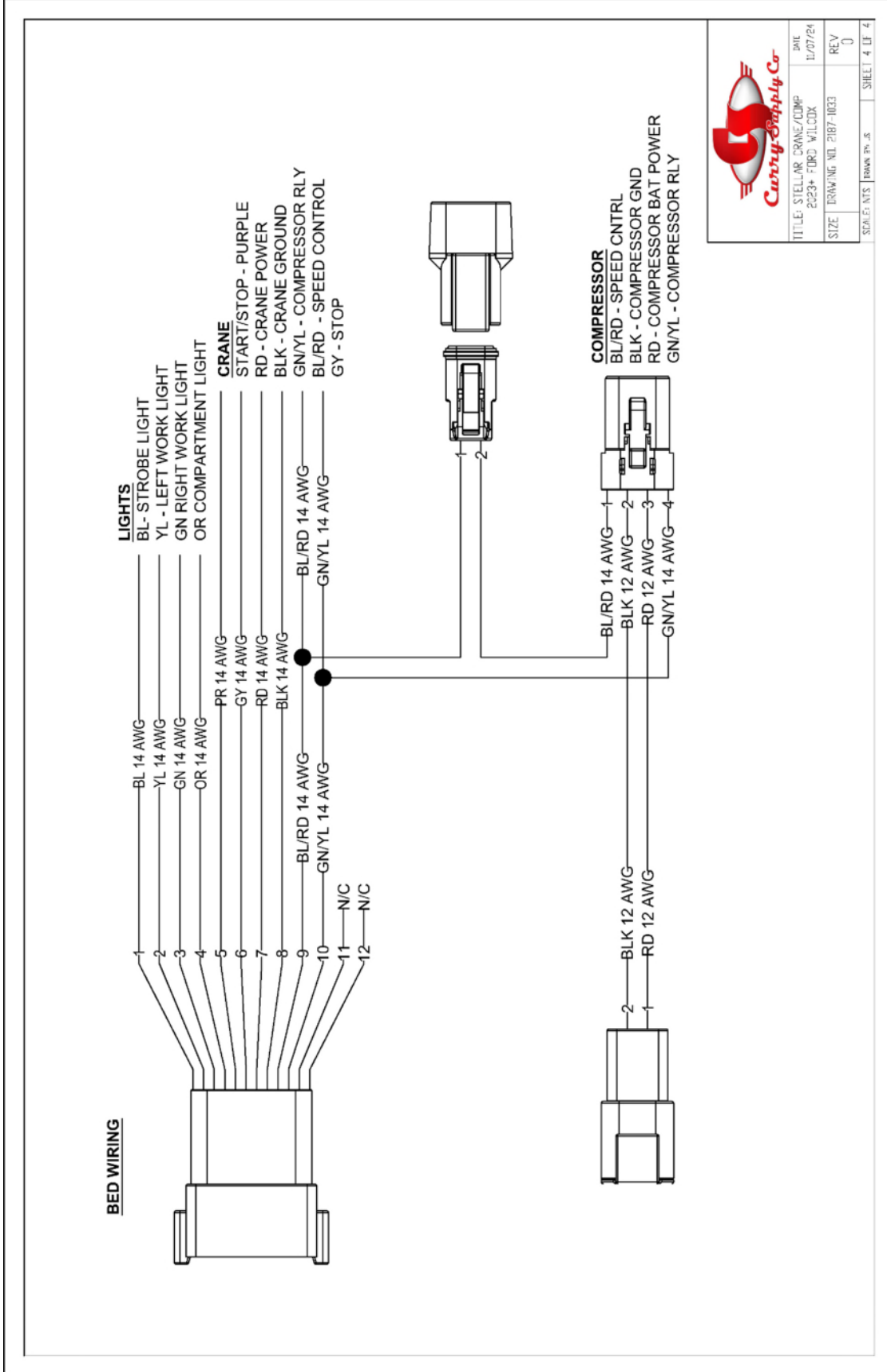
**Curtis Supply Co.**

TITLE: STILLARS CRANE/CLAMP	DATE: 11/07/24
2023+ FORD F150	REV: 0
SIZE: DRAWING NO. 2187-1033	
SCALE: NTS	SHEET 2 OF 4






TITLE: STELLAR CRANE/COMP 2023+ FORD WILDCAT	DATE 11/07/24
SIZE: DRAWING NO. 2187-1003	REV 0
SCALE: NTS	DRAWN BY: JS
	SHEET 3 OF 4




**Cunty Supply Co.**

TITLE: STELLAR CRANE/CDMP 2023+ FORD WILDCAT	DATE: 11/07/24
SIZE: DRAWING NO. 2187-1033	REV: 0
SCALE: NTS	DRAWN BY: JS
	SHEET: 4 OF 4

REVISION TABLE				
ZONE	REV	DESCRIPTION	DATE	APPROVED
	1	SEE NOTE B	07/03/2024	JS



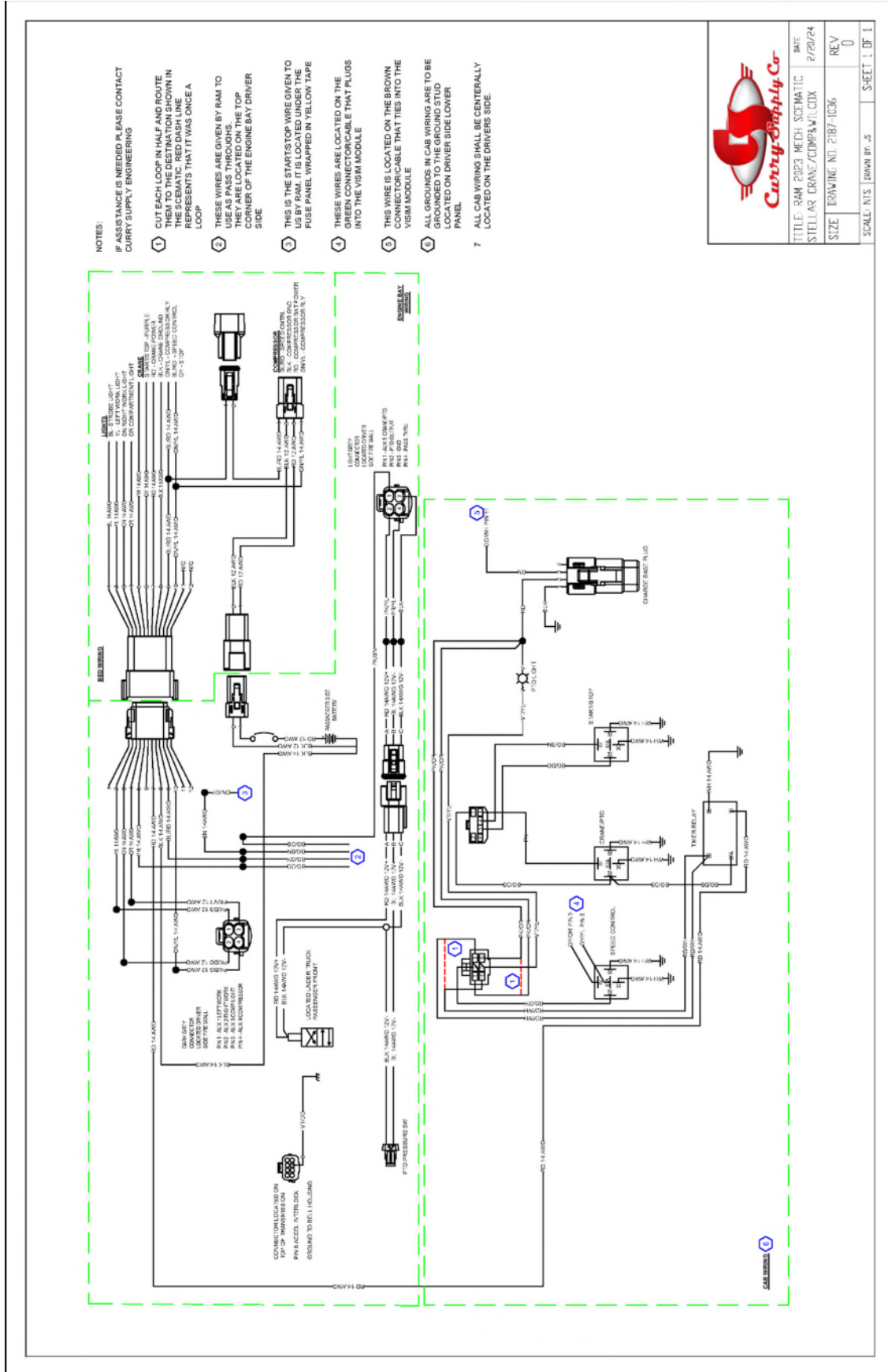
TITLE: RAW 2023 MECH SCHEMATIC  
STELLAR CRANE/COMP&WILCOX

DATE: 2/20/24

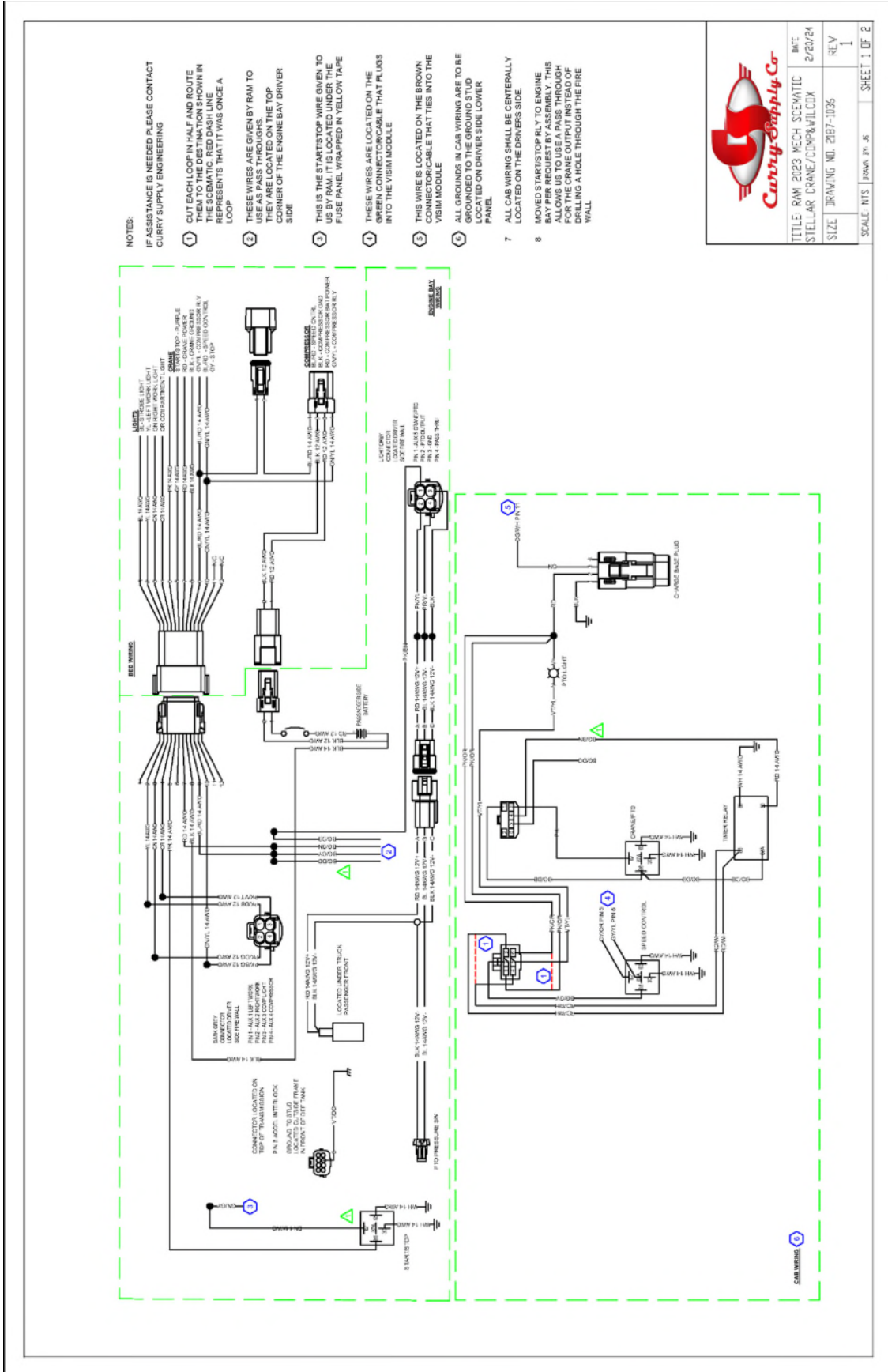
SIZE: DRAWING NO. 2187-1036

REV: 1

SCALE: NTS | DRAWN BY: JS | SHEET 1 OF 2



TITLE: RAM 2023 HIGH SCHEMATIC		DATE: 2/20/24
STELLAR CRANE/COMPACTOR		REV 0
SIZE	DRAWING NO: 2187-1036	SCALE: NTS   DRAWN BY: JS
		SHEET 1 OF 1



**Curry Supply Co.**

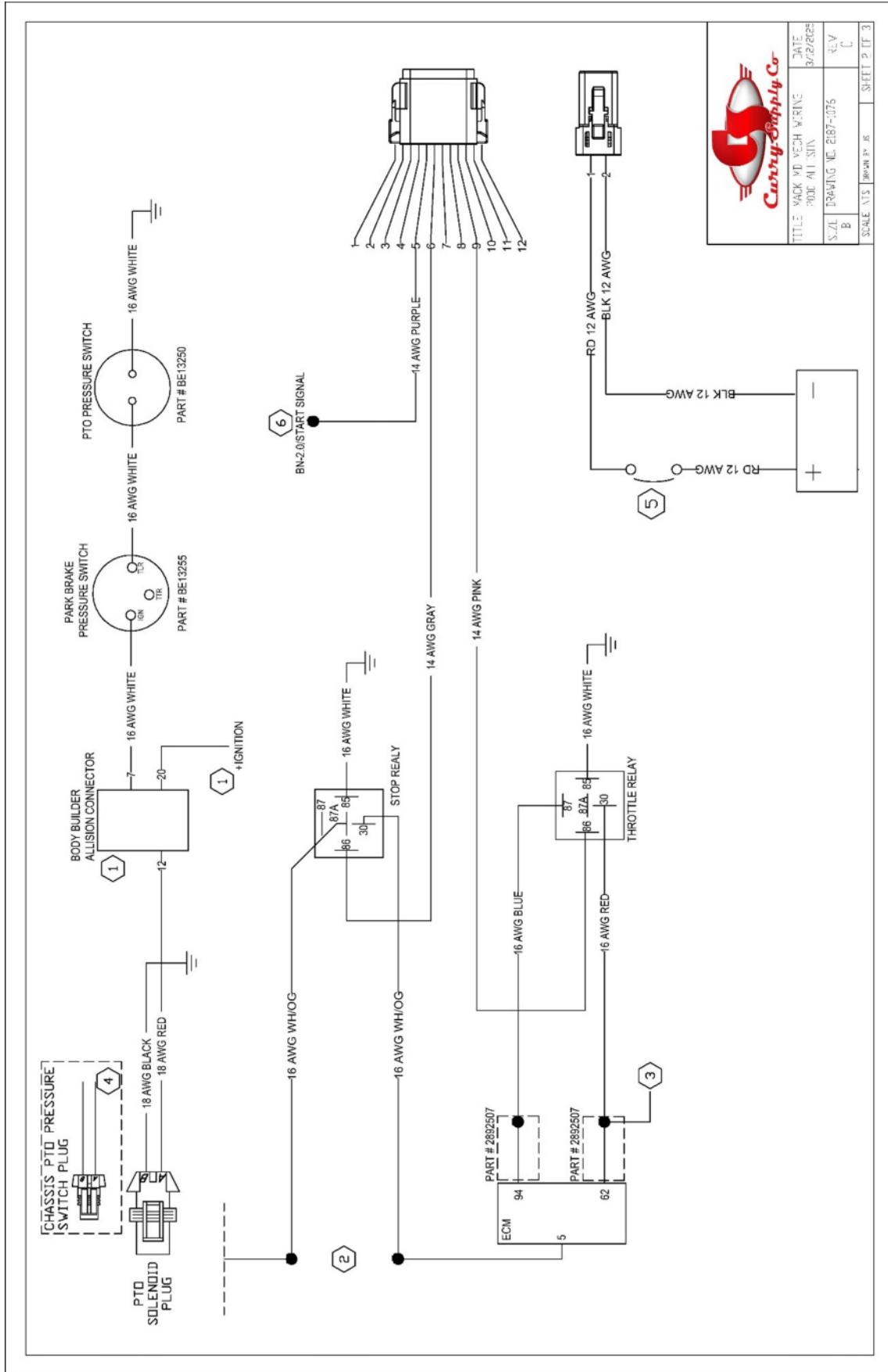
TITLE	RAW 2023 MECH SCHEMATIC	DATE	2/20/24
STELLAR CRANE/COMP&M/CX		REV	1
SIZE	DRIVING NO. 2187-1036		
SCALE	N/A	DRAW BY: JS	SHEET 1 OF 2

NOTES:

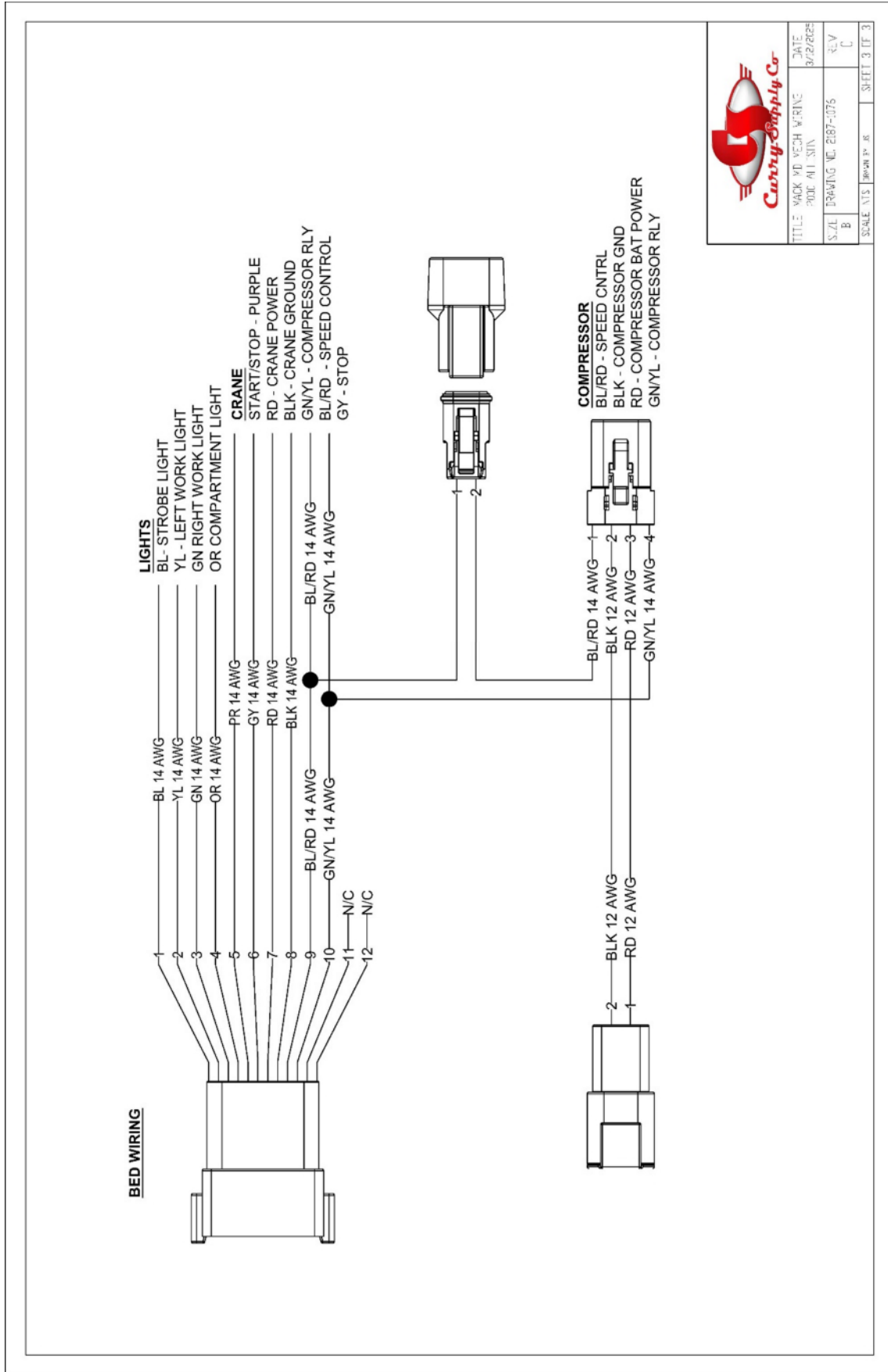

- 1) LOCATION OF THE BODY BUILDER CONNECTOR AND IGN SIGNAL IS DRIVERSIDE KICK PANEL
- 2) LOCATE PIN 5 ON THE ECM CONNECTOR. CUT THE WIRE AND RUN ONE SIDE TO 30 AND THE OTHER SIDE TO 87A AS SHOWN IN THE DIAGRAM
- 3) IF THE WIRE IS POPULATED SIMPLY SPLICE INTO THE WIRE DO NOT REMOVE!
- 4) YOU WILL NEED TO SWAP THE PTO PLUG ON THE TRUCK HARNESS TO MATE CORRECTLY WITH PTO
- 5) USE BREAKER THAT COMES WITH COMPRESSOR
- 6) LOCATE BROWN WIRE ON THE BACK OF THE KEY SWITCH. THIS IS THE START WIRE FOR THE CHASSIS



TITLE: WACK VD MEC- WERINE POUC ALLISN	DATE: 8/12/2018
SIZE: DRAWING NO: P187-075 3	REV: 0
SHEET: 1/13	DATE: 20-03-24
SHEET 1 OF 3	



		TITLE	WACK MD VECB W/IRNG	DATE	3/7/2025
		PROD	411 STA	REV	C
S.Z/L	B	DRAWING NO.	2087-1075	SCALE	1:1
SCALE	N/A	DRAWN BY	JR	SHEET	2 OF 3

TITLE	WACK MD VEH WIRING	DATE	3/22/25
PROJ	411 STA	REV	C
S.Z.	DRAWING NO. 2087-1075	SCALE	AS SHOWN
B			SHEET 3 OF 3