



Operator Manual

Mechanic Truck



Curry Supply Co., 1477 Degol Industrial Drive, Hollidaysburg, PA 16648

YOUR JOBS. OUR TRUCKS.



TABLE OF CONTENTS

Sections

Introduction & Safety Messages.....	3
System Descriptions.....	6
Normal Operation.....	9
Maintenance & Lubrication.....	28
Schematics.....	33
Troubleshooting.....	49
Warranty & Proprietary Information.....	53

SECTION 1

Introduction & Safety Messages

CONTACT US

Curry Supply Company

1477 Degol Industrial Drive, Hollidaysburg, PA 16648

service@currysupply.com CurrySupply.com

Parts 800.567.5127

Warranty Service 800.345.2829

MANUAL USAGE

This Operators Manual contains information to safely operate more than (1) configuration of "Curry Supply Company Mechanic Truck". The parts shown may not reflect the exact configuration on your truck. "Custom" style trucks may have parts not listed. If your system is not covered in this manual, please contact Curry Supply Co. Support at 800.345.2829 or service@currysupply.com.

Information for trucks with an aerial lift may be found in the aerial lift operator manual.

Information for trucks with lube dispensing equipment may be found in the fuel/lube operator manual. All operator manuals may be found by clicking the following link:

<https://currysupply.com/product-support/>

All personnel working on or operating the vehicle must become familiar with the following safety messages.

Due to the nature of these processes, ensure that all safety information, warnings, and instructions are read and understood before

any operation or maintenance procedures are performed.

This manual does not supersede any local, state, or federal laws.

WARNING, CAUTION, AND NOTES

The following definitions are found throughout this manual and apply as follows:

WARNING

OPERATING PROCEDURES AND TECHNIQUES COULD RESULT IN PERSONAL INJURY OR LOSS OF LIFE IF NOT FOLLOWED CORRECTLY.

CAUTION

OPERATING PROCEDURES AND TECHNIQUES WHICH COULD RESULT IN DAMAGE TO EQUIPMENT IF NOT FOLLOWED CORRECTLY.

NOTE


OPERATING PROCEDURES AND TECHNIQUES THAT ARE CONSIDERED ESSENTIAL TO EMPHASIZE.

SAFETY MESSAGES

There are various decals on the truck. Make sure to replace any that becomes hard to read or start to peel off. Everyone who works with or uses the truck should be familiar with this manual and all the decals.


CAUTION

NEVER USE EQUIPMENT IF IT MAKES UNUSUAL NOISES, HAS VIBRATIONS, OR FAILS TO OPERATE FREELY.



WARNING

THE VEHICLE IS EQUIPPED WITH A BACK-UP ALARM. ALARM MUST SOUND WHEN OPERATING THIS VEHICLE IN REVERSE.




 **CAUTION** 

CHECK THE PTO FOR LEAKS AND LOOSE MOUNTING HARDWARE (STUDS, CAP SCREWS, NUTS). CHECK WITHIN THE FIRST WEEK OF USE, MONTHLY THEREAFTER, OR EVERY 100 HOURS OF OPERATION WHICHEVER COMES FIRST. TA0-047


WARNING

CONTACT WITH LIVE ELECTRICAL CIRCUITS COULD DAMAGE EQUIPMENT OR CAUSE INJURY.




WARNING

DO NOT WALK ON TOP OF THE VEHICLE. FALLING FROM VEHICLE CAN RESULT IN SERIOUS INJURY.




WARNING

ALWAYS CHOCK THE WHEELS IMMEDIATELY UPON EXITING THE VEHICLE.



CAUTION

ADVERSE WEATHER CONDITIONS CAN CAUSE EQUIPMENT DAMAGE. WHENEVER POSSIBLE, PERFORM MAINTENANCE INDOORS.




NOTE

ALL EQUIPMENT REPAIRS SHOULD BE DONE BY AN AUTHORIZED DISTRIBUTOR WHO KNOWS HOW THEY WORK AND HOW TO KEEP THEM SAFE. ANY REPLACEMENT PARTS MUST BE OF ORIGINAL QUALITY, AND ALL SAFETY AND OPERATION LABELS MUST BE ATTACHED AND EASY TO READ.


WARNING

DO NOT OPERATE THE UNIT WHILE INTOXICATED OR EXTREMELY EXHAUSTED.




WARNING

WHEN OPERATING OR WORKING ON THE UNIT, KEEP HANDS AND BODY PARTS CLEAR OF PINCH POINTS.




WARNING

MOVING PARTS CAN CRUSH AND CUT. KEEP HANDS, FEET, HAIR, AND LOOSE CLOTHING AWAY FROM MOVING PARTS.



WARNING

ALWAYS WEAR THE PROPER PPE WHILE OPERATING THE UNIT.




DANGER

NO SMOKING MATCHES OR OPEN FLAMES


WARNING

ALWAYS WEAR YOUR SAFETY BELT WHILE DRIVING THE VEHICLE. IF VEHICLE TIPS, STAY BUCKLED AND INSIDE OF CAB AREA.



WARNING

IMPROPER USE OF EQUIPMENT COULD CAUSE SERIOUS INJURY OR DEATH. PLEASE READ AND UNDERSTAND ALL INSTRUCTIONS.




DANGER

Electrocution Hazard

Death or serious injury will result from inadequate clearance if crane, load, or vehicle becomes electrically charged.

- Maintain safe clearance from high voltage power sources.
- Never approach vehicle or load if equipment is near a high voltage power source.

C4545

DANGER

A MOVING OUTRIGGER WILL CAUSE SERIOUS CRUSHING INJURY

Do not operate any outrigger unless you or a signal person can see that all personnel are clear of the outrigger and its ground contact point.

DANGER



STABILIZERS WILL CAUSE SERIOUS CRUSHING INJURY

STAND CLEAR

DANGER

Electrocution Hazard

Death or serious injury will result from touching tethered remote if crane, load, or vehicle becomes electrically charged. Maintain safe clearance from high voltage power sources.

WARNING

Untrained Operator Hazard

Read and understand all manuals and safety signs before operating or servicing this equipment.

Failure to follow operating, maintenance, or safety instructions can result in death or serious injury.

WARNING

Overload Hazard

Do not exceed equipment load charts and ratings. Failure to follow equipment load charts and ratings can result in death or serious injury.

FOR SERVICE ON THIS EQUIPMENT CONTACT:
STELLAR INDUSTRIES, INC.
190 STATE STREET, GARNER, IA 50438
Ph. 641-923-3741
Ph. 800-321-3741
PN 93936 Rev1



DANGER

SCISSORS POINT

SERIOUS INJURY WILL RESULT

KEEP HANDS AND ARMS CLEAR AT ALL TIMES

P/N 040519

SECTION 2

System Descriptions

SIDE VIEW OF TRUCK



REAR VIEW OF TRUCK



FRONT VIEW OF TRUCK



The truck shown in the pictures is a Wilcox Storage body mounted on an International chassis. It's equipped with a Stellar crane and a Stellar 40P compressor. This Operator's Manual provides information on how to safely operate more than one version of the "Curry Supply Company Mechanic Truck." The truck shown may not exactly match your truck's configuration. "Custom" trucks may have different parts that aren't listed here. If your system isn't covered in this manual, please contact Curry Supply Co. Support at 800-345-2829 or service@currysupply.com.

EQUIPMENT

Trucks are manufactured with various equipment combinations listed in the following table. Find more information about these components by clicking the links shown. If unsuccessful finding the information needed, call Curry Supply Company at 1-800-345-2829.

If the truck has an aerial lift, please reference the Aerial Lift Operator manual at currysupply.com.

Equipment	Manufacturer	Web Link
Truck Body/Tool Storage	Wilcox Bodies Ltd.	wilcoxbodies.com
	MH Eby, Inc.	Mheby.com
	Dakota Bodies	Dakotabodies.com
	Stellar Industries, Inc.	TMAX Series
	Auto Crane	Titan 38 Titan 60
Crane	Auto Crane	HC-7 Nexstar
		HC-7X Nexstar
		HC-12S Nexstar
	Stellar Industries, Inc.	CDT Pro
		EC Series
Multifunction Unit Includes a compressor, generator, battery charger, chassis charger & welder	Miller Electric Manufacturing Co.	EnPak A30 GBW
		EnPak A60
		EnPak A60 GBHW
Multifunction Unit Includes a compressor, generator, welder battery booster & battery charger	Vanair Manufacturing, Inc.	Air N Arc 300 Diesel
		Air N Arc 300 Gas
		Air N Arc 300H
		Air N Arc I-300
Compressor	Auto Crane	AC 40 Compressor
	Stellar Industries, Inc.	P Series Compressor
		R Series Compressor
	VMAC Global Technology Inc.	VMAC 40 Compressor
		VMAC 70 Compressor
	Mile-X Equipment, Inc.	MI-T-M ABS-13H-30H
Vanair Manufacturing, Inc.	vanair.com	

Equipment	Manufacturer	Web Link
Welder	Miller Electric Manufacturing Co.	Bobcat 265
		Trailblazer 330
		Blue Star 185
Generator	Honda Motor Co., Ltd.	EU7000is
Power Take Off (PTO)	Parker Hannifin Corp	272-F
	Muncie Power Products, Inc.	FR6Q
		CS6, CS8, CB6 & CB8
		A20
		TG
F20		
Rear Lift	Woodbine Manufacturing Co.	tommygate.com
	Thieman Tailgates, Inc.	thiemantailgates.com
Lube Dispensing Meter	Graco Inc.	Graco Meter
Lube Dispensing Valve		SDV15_XDV20
Lube Diaphragm Pump		Husky 1050
Lube Diaphragm Four-Way Valve		4-Way Valve 311881
Lube Piston Pump		Fire-Ball 225 Grease
		Fire-Ball 225 Oil
Lube Equipment – Couplers, Adapters, Nozzles & Z-Swivels		Lube Equipment
Lube Grease Dispense Valve		Proshot 243446
Lube Air Regulator		Regulator 308167N
Hose Reels		SDX & XDX 3A8626

SECTION 3

Normal Operation

This section provides the vehicle operator with step-by-step operating procedures for the most common configuration of the truck. Please find additional and maybe more specific information for your configuration at the links shared in Section two of this manual.

WARNING

ALWAYS APPLY THE EMERGENCY BRAKE BEFORE EXITING THE VEHICLE.



WARNING

ALWAYS CHOCK THE WHEELS IMMEDIATELY UPON EXITING THE VEHICLE.



Before operating the vehicle, be sure to do a walk-around inspection. Pay close attention to any leaks or damaged hoses.

TRUCK BODY/TOOL STORAGE

The storage bay locks are covered by shields
Type 1

To unlock it, slide the shield to the side with the tip of the key while pushing the key into the lock.



Type 2

To unlock it, push the shield in with the key.



20-Mar-25

AIR DRAIN VALVE

Trucks with built-in air compressors have a drain valve. These are located in different places depending on the truck configuration. This valve must be closed in order for the air tank to build pressure.

Outside the driver's side door.



Inside right of the rear door.



Inside left of the rear door.



AUXILIARY CONTROL PANELS

The following panels control various truck components, including the Power Take Off (PTO), flood lights, compartment lights, strobe lights, inverter, work lights, and air compressor. The truck key must be in the "on" position, or the truck must be running, to activate these systems.

OVERHEAD



DASH



DASH continued



POWER TAKE OFF (PTO)

Some trucks have a PTO. Some are integrated with the truck’s transmission and activated within the cab while others are within a multifunction unit installed on the truck and activated outside of the cab. See section two of this manual for links to information about the multifunction units.

CAUTION
IF THE PTO LIGHT IS ON WHEN THE TRUCK ENGINE IS NOT RUNNING, TURN IT OFF PRIOR TO STARTING THE TRUCK.

BETWEEN SEATS



1. Apply the emergency brake, which is by your left knee, left foot or on the dash. A message will show on the console to let you know if the emergency brake is on or off.

Left Knee



Dash



Left Foot



20-Mar-25

2. While the truck is running, press the button on the auxiliary control panel to turn on the PTO. The truck will go to high idle and the PTO indicator light will turn on. The light may be embedded within the button, beside the emergency brake switch or on the truck console.

Example 1



Example 2



Example 3



Example 4



INVERTER

The inverter will supply 120V &/or 240V AC power.

1. While the truck key is turned on or with the truck running, press the button on the auxiliary control panel to turn on the inverter. The truck may be turned off to continue to use the inverter. The following pictures show different locations of the inverter activation button depending on the model of the truck.

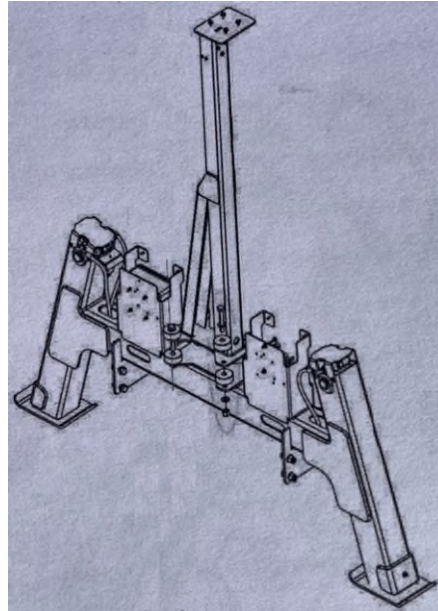


OUTRIGGER/STABILIZER

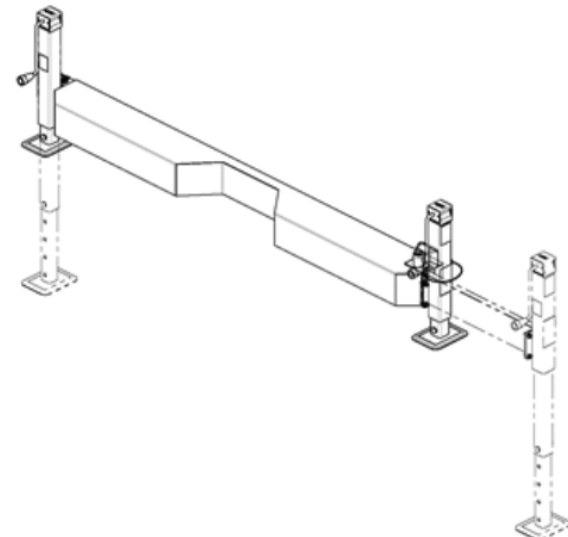
Outriggers help keep the truck stable and prevent it from rolling over when using the crane. Two different styles offered are the "A" frame and the "H" frame. The "A" frame can be found mostly on knuckle boom and aerial lift trucks. The "H" frame can be operated by hydraulics or manually.



A-Frame Outrigger



H-Frame Outrigger



2. Plug into the appropriate outlet.



20-Mar-25

A-FRAME

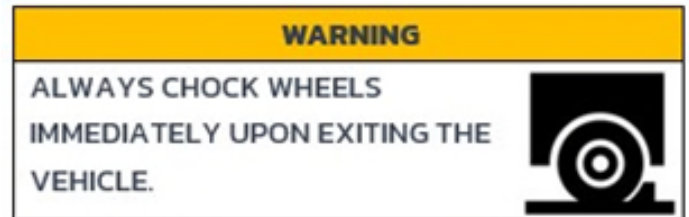
The following procedures are for the "A" frame outrigger with controls mounted on the tool storage body between the cab and the body. If your controls are elsewhere, please refer to the truck body manufacturer found in section two of this manual.



1. Make sure the truck is parked in a safe place with an acceptable incline. Check this using the level gauge located beside the control switch.



3. Apply the emergency brake and turn on the PTO (refer to Power Take Off section of this manual).
4. Place a chock behind one front wheel and in front of one rear wheel on the side of the truck where you'll be working.



5. Make sure there are no obstacles where the feet of the outriggers touch the ground and the ground is solid.




6. Extend the driver's side outrigger until the weight starts to lift from the truck springs. Do NOT lift the truck wheels off the ground. Repeat on the passenger side.

- Adjust the outriggers until the level indicates zero.



H-FRAME (hydraulic operation)

- Apply the emergency brake and turn on the PTO (refer to the Power Take Off section of this manual).
- Place a chock behind one front wheel and in front of one rear wheel on the side of the truck where you'll be working.

WARNING	
<p>ALWAYS CHOCK WHEELS IMMEDIATELY UPON EXITING THE VEHICLE.</p>	

- Locate the hydraulic controls. They are typically found either in a tool compartment alongside the truck or on the rear bumper.

Compartment



Rear Bumper



WARNING	
<p>IF THE TRUCK IS EQUIPPED WITH OUTRIGGERS THAT EXTEND OUTWARD BEFORE DOWNWARD, ALWAYS FULLY EXTEND THEM PRIOR TO LOWERING. THIS OFFERS MUCH MORE STABILITY AND ROLL PREVENTION.</p>	

20-Mar-25

4. Fully extend the curb side stabilizer with the control lever (out/in) (Some trucks do not have a curbside extension for the stabilizer). Locate and push the curb side stabilizer down (down/up). Release the lever when the stabilizer pad starts to take weight off the truck springs. Do NOT lift the truck wheels off the ground.



5. Fully extend the street side stabilizer with the control lever (out/in) (Some trucks do not have a streetside extension for the stabilizer). Push to lower the street side stabilizer (down/up). Release the lever when the stabilizer pad starts to take weight off the truck springs. Do NOT lift the truck wheels off the ground.



H-FRAME (manual operation)

1. Apply the emergency brake, which is by your left knee, left foot or on the dash. A message will show on the console to let you know if the emergency brake is on or off.

Left Knee

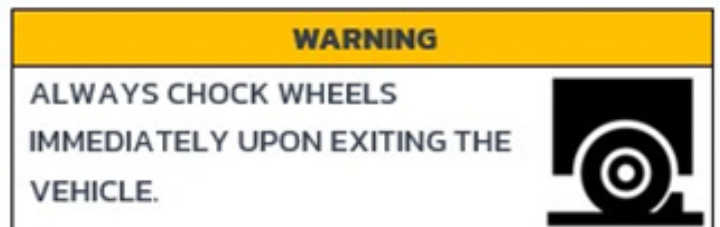
Dash



Left Foot



2. Place a chock behind one front wheel and in front of one rear wheel on the side of the truck where you'll be working.



3. Go to the curbside stabilizer. Ensure the area where the leg meets the ground is clear & solid.



4. If equipped with extensions, pull the leg fully out. Some trucks may have extending street side stabilizers &/or curb side stabilizers. A few trucks have stabilizers that do not extend on either side. Pull the top extension locking pin up and turn 90 degrees.



5. Pull the extension leg out until the pin on the underside of the extension engages.



The underside pin has engaged into the hole of the extension leg.



6. Remove the leg pin and allow the leg to drop until the leg pad contacts the ground. Reinsert pin and pin retainer.



20-Mar-25

- Turn the arm clockwise to lower the outrigger until it begins to take weight from the truck springs. NEVER raise the truck wheels off the ground.



- Repeat steps 4 through 7 on the street side stabilizer.

CRANE

WARNING

DO NOT OPERATE THE CRANE UNTIL THE EMERGENCY BRAKE IS ON, THE STABILIZERS ARE FULLY EXTENDED AND THE TRUCK IS LEVEL.

NOTE

REFER TO THE CRANE MANUFACTURER OPERATOR MANUAL FOR WEATHER PERFORMANCE NOTICES. EXTREME TEMPERATURES MAY AFFECT THE PERFORMANCE OF THE CRANE.

- Plan the lift. Understand the work site and the loads before positioning the truck.

- Apply the emergency brake and turn the PTO on (refer to the Power Take Off section of this manual). If you have an electric crane or an external hydraulic unit, you will not have a PTO. Refer to the links in section two of this manual for operational functions of the external hydraulic unit.

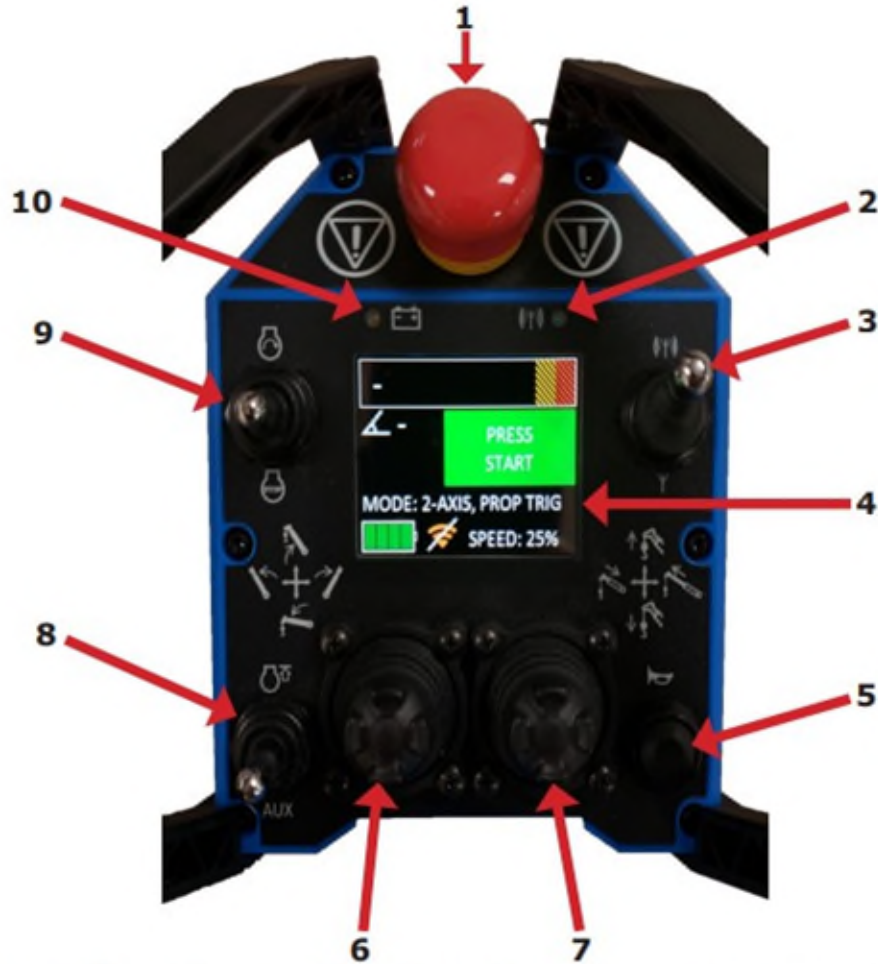
- Chock the wheels and set the outriggers (refer to the Outrigger/Stabilizer section of this manual).

- Turn on the crane control.



There are 3 different crane remote control units that come with Curry Supply Company trucks. The following diagrams show each remote with descriptions of the functions. Specific information for each can be found at the links in section two of this manual.

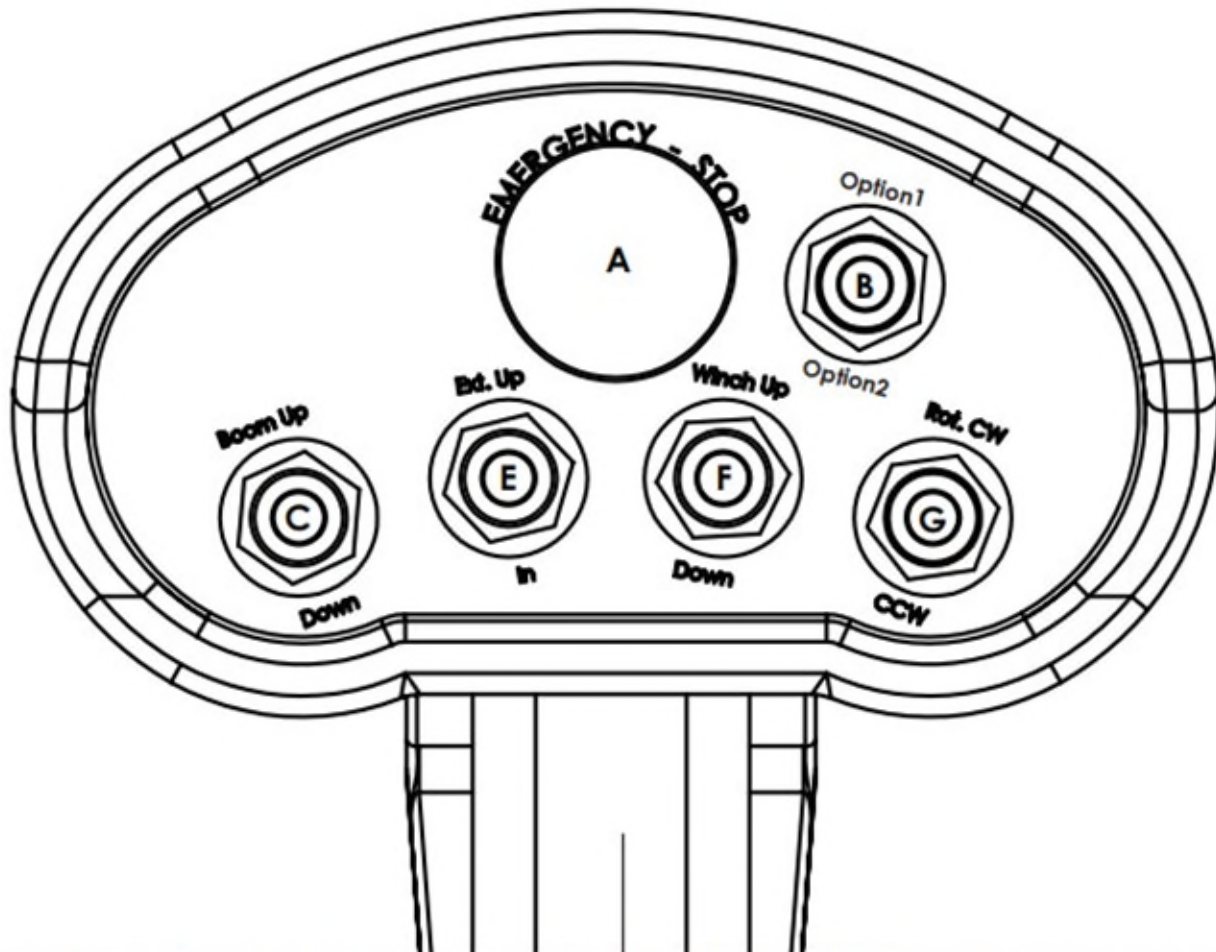
Auto Crane Nexstar Crane Control Unit



1. **Emergency Stop** - Push to activate, pull to release, then cycle remote power to reset. When activated, E-Stop stops all outputs from receiver.
2. **Link LED** - Off during normal operation. Solid yellow if offline, slow flash if remote battery is low.
3. **On/Off Switch** - Turns remote on and off. Pull locking lever out prior to lever up (On) or down (Off).
4. **Display Screen** - LED screen that displays many crane operating parameters, codes, and functions.
5. **Horn/Start Button** - Used to activate horn once remote is linked, used to link remote to receiver.
6. **Right Joystick** - Press the joystick up to raise the hook. Press the joystick down to lower the hook. Press the joystick right to extend the boom Press the joystick left to retract the boom.
7. **Left Joystick** - Press the joystick up to raise the boom. Press the joystick down to lower the boom. Press the joystick right to rotate the crane clockwise. Press the joystick left to rotate the crane counterclockwise.
8. **High Idle/Aux Switch** - Press the switch up to activate vehicle high idle. Press the switch up once more to deactivate vehicle high idle. Press the switch down to activate an optional feature (air compressor, etc.). Press the switch down once again to deactivate the optional feature.
9. **Engine Start/Engine Stop Switch** - Press the switch up to start the vehicle engine. Press the switch down to turn off the vehicle engine.
10. **Battery LED** - Solid green if online, slow flash if remote battery is low.

Stellar EC Series Crane Control Unit

Radio Remote Control Functions



A. E-Stop Button: Push to immediately stop all crane functionality. *Note: The E-stop button is not intended to be an on/off switch. This is also the first item to check if the crane is not responding to toggle and trigger activation. Make sure the red E-Stop button is in the up or disengaged position.*

B. Option1/Option2: Provides signal for optional equipment

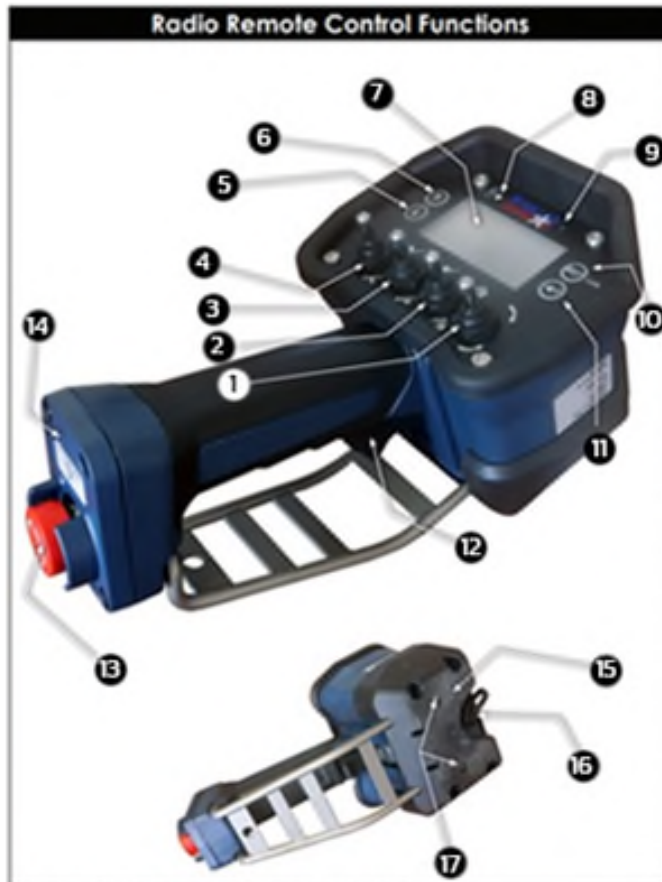
C. Boom Up/Down Toggle: Push up to raise the boom. Push down to lower the boom.

D. Extension In/Out Toggle: Push up to extend the extension. Push down to retract the extension.

F. Winch Up/Down Toggle: Push up to raise the winch. Push down to lower the winch.

G. Rotate Clockwise/Counterclockwise: Push up to rotate the boom clockwise. Push down to rotate the boom counterclockwise.

Stellar CDT Crane Control Unit



1. Rotate Clockwise/Counterclockwise

Push up to rotate the boom clockwise. Push down to rotate the boom counterclockwise. The screen will continue to display load % while pressed. Must be operated in conjunction with Variable Speed Trigger to perform function.

2. Winch Up/Down Toggle

Push up to raise the winch. Push down to lower the winch. Depending on system preferences, screen will display weight of load in lbs or kg while pressed. Must be operated in conjunction with variable speed trigger to perform function.

3. Extension In/Out Toggle

Push up to extend the extension. Push down to retract the extension. Depending on system preferences, screen will display Radius in feet & inches or meters & centimeters while pressed. Must be operated in conjunction with variable speed trigger to perform function.

4. Boom Up/Down Toggle

Push up to raise the boom. Push down to lower the boom. Screen will display Boom Angle while pressed. Must be operated in conjunction with variable speed trigger to perform function.

5. Shift Function Down Button

Press to scroll through screens that change the function of each of the four toggle switches. New toggle function will be shown in line with the toggles with toggle up and down to acknowledge any error messages that occur while in Crane Operating Mode.

6. Shift Function Up Button

Press to return to previous shift function screen while scrolling through shift function screens. NOTE: While in crane operating mode, this button can be programmed with a quick function operation.

7. LED Information Display

Back lit LED screen displays various information about crane functions and operational feedback.

8. Battery Charging Indicator

Indicator will illuminate when battery is being charged in docking station or with tethered extension cable.

9. Ambient Light Sensor

If activated in the preferences screen, the light sensor will turn the screen back light on or off as needed.

10. Boost/Re-Link Button

Push and hold for 2 seconds to engage boost mode. Also, if the transmitter and receiver become disconnected from one another, quick press this button to re-link the two devices.

11. Crane Info Scroll Button

Press to scroll through the different readouts while in Crane Operating Mode and crane is not moving.

12. Variable Speed Trigger

Use in conjunction with a crane control toggle. Press up or down on a toggle and squeeze the trigger to activate the function. The further the trigger is pressed in, the faster the function will operate.

13. Stop Button

The radio remote control is equipped with an "all functions" stop button. If a situation arises that requires the immediate stoppage of crane functionality, push in the red stop button. To resume operation, twist the stop button clockwise to release it and activate any function to awaken the transmitter. The controller will then need to be re-linked to the receiver to continue operation.

14. Battery Access Cover

The four AA NIMH batteries are stored in the handle and can be accessed by removing the four screws at the bottom of the handle.

15. Quick Hang Magnetic Back

A series of magnets are integrated into the back housing of the radio remote. These magnets allow you to temporarily attach the radio to metal surfaces for your convenience. Do not leave it hanging there, especially during transport. Always return your radio remote to its docking station for transport, storage, and charging.

16. Extension Cable Data Port and Cap

There is an M12 data port on the back of the radio remote in the event you need to install a tethered extension cable to control the crane.

17. Charging Contact Points

The two charging contact points for the radio remote are located on the back. Keep them clean from and ensure they are not covered by tape or other adhesives.

20-Mar-25

5. Winch down slightly to loosen the snatch block from the stow hook.



6. Raise the boom high enough to clear the boom rest and any other obstructions.



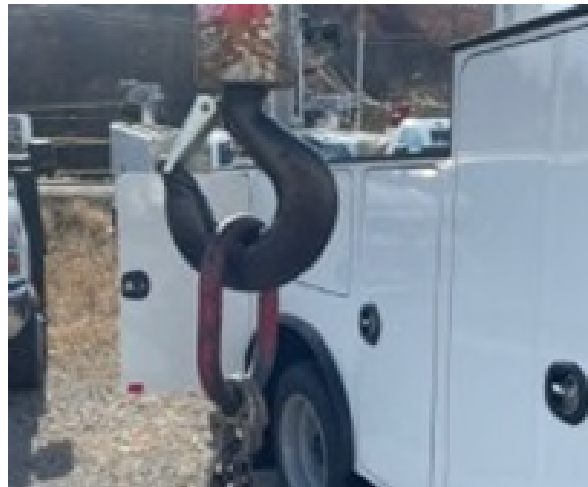
7. Rotate the crane until it clears the truck body and lower the boom until the snatch block is within reach.



8. Winch down to create slack in the wire rope & unhook the snatch block.



9. Position the crane with the hook centered directly over the load and hook into the load slings.



WARNING

ALWAYS ENSURE THE HOOK LATCH COMPLETELY CLOSURES AND NEVER WRAP THE WIRE ROPE AROUND THE LOAD.

CAUTION

ALWAYS MAINTAIN THREE FULL WRAPS OF THE WIRE ROPE ON THE WINCH DRUM AT ALL TIMES.



10. Lift the load slightly off the ground and ensure it is secure and balanced within the sling. Also make sure the truck does not move.

11. Move the load. Keep an eye on your surroundings and if necessary, use a spotter.

WARNING

NEVER ALLOW PEOPLE UNDER THE BOOM OR LOAD AND NEVER LEAVE A LOAD SUSPENDED UNATTENDED.

12. Reverse steps 5 through 9 to secure the crane to the truck.

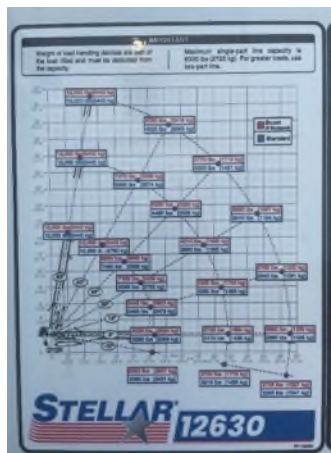
If the Stellar crane control pendant starts to vibrate, the range and/or load weight of the crane is at its limit. The crane will not perform an action outside of its safe operating limits. The Auto Crane pendant does NOT have this feature.

WARNING

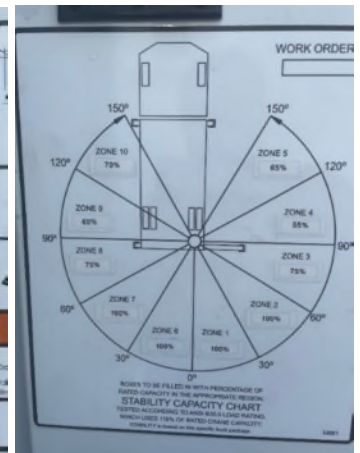
NEVER RELY ON THE SAFETY FEATURES OF THE CRANE. KNOW THE WEIGHT OF THE LOAD AND USE THE CRANE SPECIFICATIONS TO DETERMINE IF THE LOAD CAN BE LIFTED SAFELY.

Labels attached to truck body next to the crane operation controls show the limits of operation. The first label (example 1) shows lifting limits for the angle of the crane boom as it is raised and lowered. The second label (example 2) shows the rotating angle of the crane boom as it rotates. These two limits must be combined to find the weight limit at the height and location of the crane.

Example 1



Example 2



20-Mar-25

CRANE-MANUAL OPERATION

If the remote function is lost while the crane is extended, it may be retracted manually (hydraulic power is still required). The boom may be lowered manually without hydraulic or electrical power. Click on the links below for instructions.



[CDT Pro Page 50](#)

[EC Series Page 28](#)



[HC-7 Nexstar Page 21](#)

[HC-7X Nexstar Page 21](#)

[HC-12S Nexstar Page 21](#)

LUBE DISPENSING

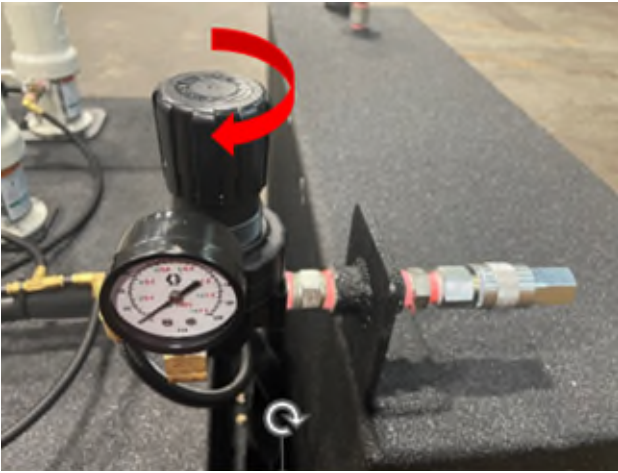
The truck may be outfitted with a Lubrication Skid that allows dispensing of 3 different types of oil and 1 type of grease. It is also equipped with a waste oil system. This system is powered by compressed air.



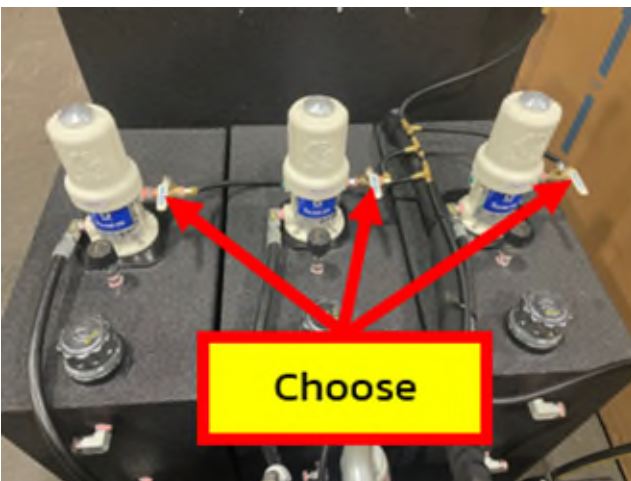
1. Ensure the lube skid is connected to a compressed air source providing 80 psi air pressure or above.



2. Adjust the air regulator to 65 psi.



3. Pull the dispensing hose to the dispensing location and turn on the ball valve for the oil chosen.



4. Open the nozzle on the end of the dispensing hose.



5. If desired, set the meter to the amount of oil to dispense. The outer dial shows the number of quarts, while the inner dial shows pints. The analog display shows the total amount of quarts that have been dispensed since last reset. Turn the meter pointer counterclockwise to the amount needed.



CAUTION

TO AVOID COSTLY METER DAMAGE, NEVER TURN THE METER POINTER BACKWARDS (CLOCKWISE).

20-Mar-25

- Pull the trigger. The trigger will latch automatically. Dispensing will shut off when the preset amount is reached. If the preset was not set, dispensing will not stop until the trigger is released.



- Push the lock button & release the trigger to stop dispensing.



- Turn the twist lock nozzle clockwise to close the nozzle.



- Turn off the air ball valve to the pump.



WASTE OIL - SUCTION

- Turn on the ball valve at the end of the waste oil hose.



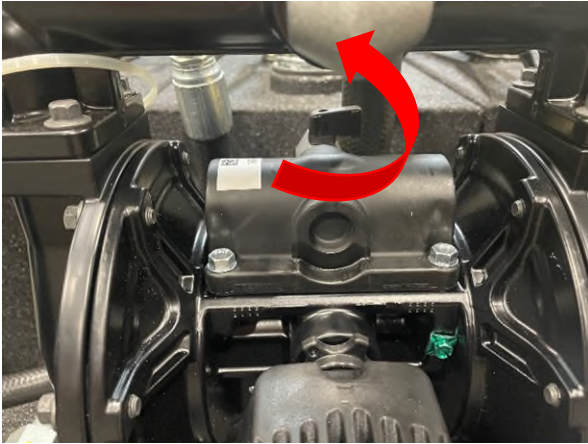
CAUTION

NEVER RUN THE PUMPS WITHOUT FLUID.

2. Submerge the waste hose in the waste oil and turn the 4-way valve to "FILL TANK".



3. Turn on the air ball valve to the diaphragm pump.



4. When finished, reverse steps 1 – 3 above.

WASTE OIL – DISPENSE

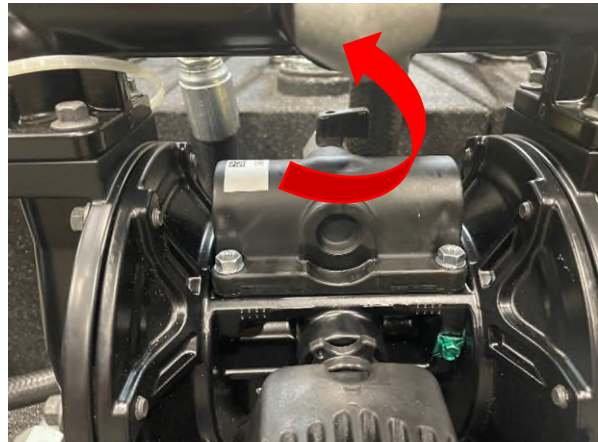
1. Turn on the ball valve at the end of the waste oil hose.



2. Pull the hose to the dispense location and turn the 4-way valve to "EMPTY TANK".



3. Turn on the air ball valve to the diaphragm pump.



4. When finished, reverse steps 1 – 3 above.

CAUTION

TO AVOID CLOGGING, IT IS RECOMMENDED TO USE A SUCTION BELL AT THE END OF THE HOSE TO KEEP DEBRIS FROM ENTERING THE SYSTEM.

NOTE

IF AN AIRLOCK FORMS WITHIN THE SYSTEM, CYCLE THE FOUR-PORT VALVE TO "PUMP PRESSURE" TO PUSH FLUID THROUGH THE SYSTEM, ELIMINATING THE AIR LOCK.

SECTION 4

Maintenance & Lubrication

Due to numerous jobs and purposes, varying environments and climates, and importance to safety, routine maintenance is highly recommended. Regular maintenance keeps the trucks functioning correctly and at optimum efficiency. The following tasks can help prevent breakdown and keep the truck on the job when you need it most.

NOTE

FOR THE MOST ACCURATE MAINTENANCE FOR A SPECIFIC CHASSIS SYSTEM, REFER TO THE PRODUCT SPECIFIC USER MANUAL.

DAILY SAFETY MAINTENANCE

Tires – Check for proper inflation and tread depth.

Brake System – Routine inspections on brake pads and calipers for safe operation.

Lights – Check all lights are working and functioning correctly.

Fluids – Check that the engine oil, coolant, Hydraulic fluid, and wiper fluid are all at the right levels.

Hoses – Check for leaks and cracks, and make sure everything is securely fastened.

HYDRAULIC FLUID

Check the hydraulic fluid level daily before use. The top site indicator shows when the tank is full while the bottom shows when fluid must be

added. Fill with the crane manufacturer recommended fluid.



Crane manufacturers specify the hydraulic system should be flushed and new fluid added on a schedule. They also specify how often to replace the filter. Please refer to the manufacturer operator manual. A link to this manual may be found in section two of this manual.

Trucks without a PTO integrated on the transmission may have multifunction units that supply hydraulic power. The tanks for these units are located beside the unit. The hydraulic fluid level is indicated by a gauge within the tank cap.

TOOL STORAGE/TRUCK BODY

DAILY

- Ensure doors latch securely.
- Insert the key into each door and turn to lock. Ensure the doors do not open.

- Insert the key into each door and turn to unlock. Ensure the doors open.

MONTHLY

- Lubricate hinges with white lithium spray lubricant.
- Spray door locks with lock lubricant.

OUTRIGGERS/STABILIZERS

DAILY

- Inspect the master cylinder, slave cylinder, hoses and fittings for damage, wear, or foreign objects.
- Inspect assembly for damaged, bent, missing or rusted components.
- For outriggers that extend, pull them out a few inches to ensure they are not stuck in place.

MONTHLY

- Lubricate pivots and inner tube extension with white lithium grease.

CRANE

CAUTION
<p>THE CRANE MANUFACTURER SPECIFIES DAILY AND PERIODIC MAINTENANCE. PLEASE REFER TO THEIR MANUAL FOR PROPER MAINTENANCE OF THE CRANE. THIS MANUAL CAN BE FOUND IN SECTION TWO OF THIS MANUAL.</p>

DAILY

Inspect for:

- Hoses & gearboxes for leaks.
- Proper hydraulic fluid level.

- Excessive wear of controls.
- All securing hardware intact.
- Crane hook & other loose parts for damage to structures and welds.
- Wire rope for broken wires, extensive wear, distortion & heat damage.
- Rust, cracks and other structural deterioration.
- Range of motion.

Rope replacement should be considered for:

- Running ropes with 6 randomly distributed broken wires in one strand in one lay.
- Standing ropes with more than 2 broken wires in one lay in sections beyond the end connections or more than 1 broken wire at the end connection.
- Outer wire broken at the contact point with the core of the rope & protrudes out of the rope core.
- Wear of 1/3rd the original diameter.
- Heat damage.

MONTHLY

Manual control valves.



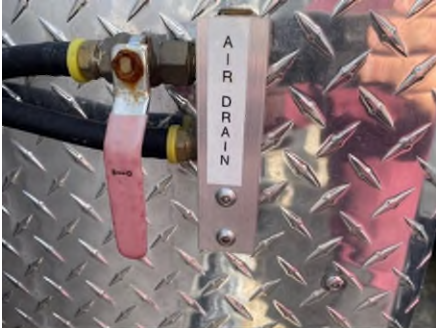
- Spray valves with penetrating spray.
- Cycle the crane using these controls.

20-Mar-25

COMPRESSOR

Each day after using the air compressor, open the "air drain" valve until all the air and water is drained from the system. The valve is in different locations depending on the configuration of the truck.

Outside the driver's side door



Inside right of the rear door



Inside left of the rear door



CAUTION

COMPRESSOR MANUFACTURERS SPECIFY DAILY AND PERIODIC MAINTENANCE. PLEASE REFER TO THEIR MANUAL FOR PROPER MAINTENANCE OF THE COMPRESSOR. THIS MANUAL CAN BE FOUND AT THE LINKS IN SECTION TWO OF THIS MANUAL.

POWER TAKE OFF (PTO)

Upon delivery of the vehicle and initial operation, check for leaks from any location. The PTO should be serviced at the same intervals as the transmission. The transmission maintenance should be completed as recommended by the vehicle manufacturer. The PTO is part of a system that includes the drive shaft which should also be checked at the same time.

Within the first week of use, recheck the installation of the PTO. Check for leaks and loose mounting hardware (studs, cap screws, nuts). Recheck the cable or lever connections for proper adjustment and tighten any loose connections. At regular maintenance intervals, check adjustments and lubricate moving parts, tighten and repair the connections, mounting hardware, cable, or lever linkages.

DAILY BEFORE USE

- Check for any leaks.
- Check the transmission oil level.
- Check for any dents or damage to PTO or driveshaft system.

EVERY 100 HOURS

- Recheck the installation of the PTO.
- Check for leaks and loose mounting hardware (studs, cap screws, nuts).
- Recheck and tighten any loose connections.
- Check adjustments and lubricate moving parts.
- Check and retighten any bolts, linkages, or mounting hardware.
- Apply anti-seize grease to the output shaft.

LUBE SKID - GRACO METER

WEEKLY

- Clean strainer.



AS NEEDED

- Disassemble and clean per pages 14 through 17 of the Graco Meter manual supplied with the truck and with the links found in section two of this manual.

LUBE SKID - PRODUCT TANKS

WEEKLY

- Inspect the tanks for debris, sludge & cross contamination. Clean as needed.
- Clean the strainer found under each product tank lid (remove the screws & strainer from the tank).



YEARLY

- Use compressed air to blow out the breather caps (located on each product tank). If air does not pass through, replace the cap.



20-Mar-25

LUBE SKID - DIAPHRAGM PUMP

EACH USE

- Check all hoses for wear or damage and replace as necessary.
- Check all threaded connections are tight and leak-free.

EVERY 500 HOURS OR MONTHLY

- remove the hose from the pump air inlet and add two drops of machine oil to the air inlet.

CAUTION

DO NOT OVER-LUBRICATE THE PUMP. OIL IS EXHAUSTED THROUGH THE MUFFLER, WHICH COULD CONTAMINATE THE FLUID SUPPLY OR OTHER EQUIPMENT. EXCESSIVE LUBRICATION CAN ALSO CAUSE THE PUMP TO MALFUNCTION.

AS NEEDED

- Flush the pump often enough to prevent the fluid from drying or freezing in the pump.
Use a compatible solvent.
- Always flush the pump and relieve the pressure before storing it for any length of time.

OTHER EQUIPMENT

Please refer to the specific manual for the equipment in question. Information may be found in the manuals supplied with the truck and with the links found in section two of this manual.

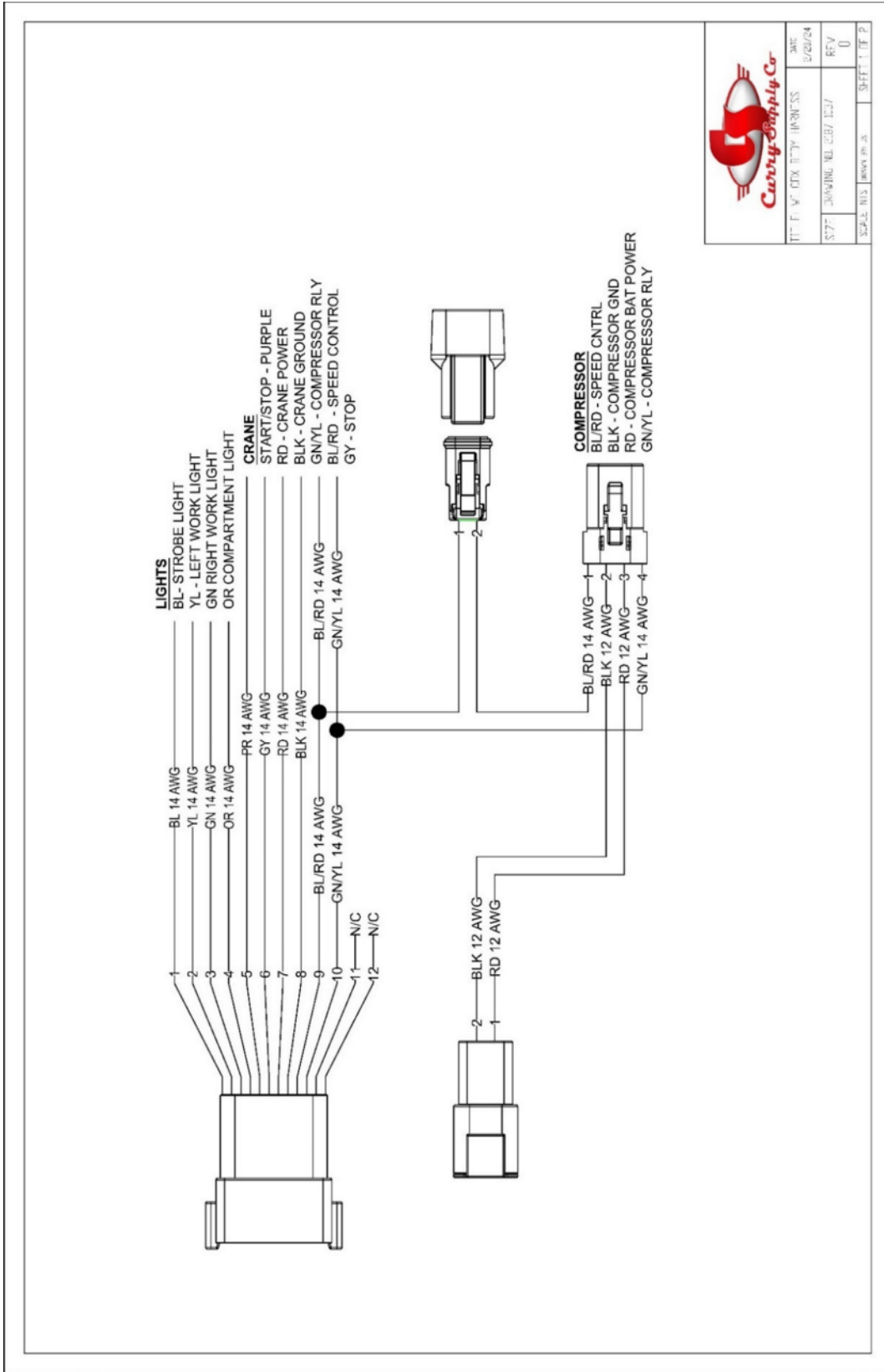
SECTION 5

Schematics

Wilcox Body Harness 2187-1037 SCH1-1	Page 34
Wilcox Body Harness 2187-1037 SCH1-2	Page 35
Peterbilt 2023 PTO Speed Control 2187-1034 SCH2-1	Page 36
Peterbilt 2023 PTO Speed Control 2187-1034 SCH2-2	Page 37
Peterbilt 2023 PTO Speed Control 2187-1034 SCH2-3	Page 38
Ford 2023+ Stellar Crane Wilcox Body 2187-1033 SCH3-1	Page 39
Ford 2023+ Stellar Crane Wilcox Body 2187-1033 SCH3-2	Page 40
Ford 2023+ Stellar Crane Wilcox Body 2187-1033 SCH3-3	Page 41
Ford 2023+ Stellar Crane Wilcox Body 2187-1033 SCH3-4	Page 42
Ram 2023 Stellar Crane Wilcox Body 2187-1036 SCH4-1	Page 43
Ram 2023 Stellar Crane Wilcox Body 2187-1036 SCH4-2	Page 44
Ram 2023 Stellar Crane Wilcox Body 2187-1036 SCH4-3	Page 45
Mack 2024 Mechanic 2187-1076 SCH5-1	Page 46
Mack 2024 Mechanic 2187-1076 SCH5-2	Page 47
Mack 2024 Mechanic 2187-1076 SCH5-3	Page 48

CAUTION

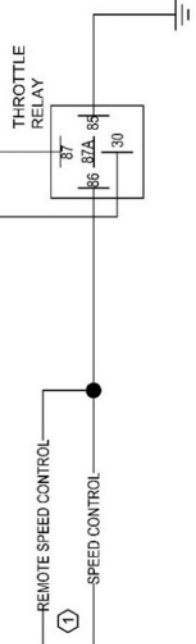
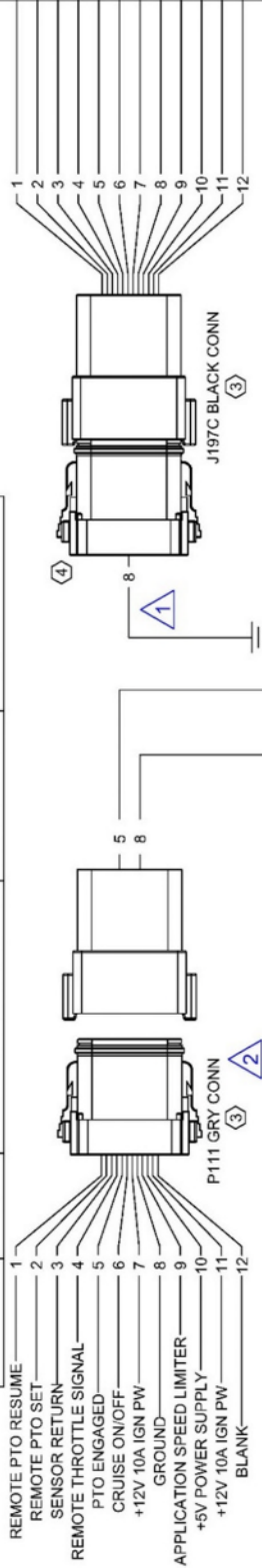
PLEASE CONTACT CURRY SUPPLY COMPANY BEFORE ATTEMPTING ANY CHANGES TO THE ELECTRICAL SYSTEMS. DOING SO MAY CAUSE EQUIPMENT DAMAGE OR VOID WARRANTY.



		REV	0/20/24
		DATE	0/20/24
REV	0	REV	0
DATE	0/20/24	DATE	0/20/24

REVISION TABLE

ZONE	REV	DESCRIPTION	DATE	APPROVED
	1	ADDED GROUND WIRE	02/20/2024	JS
	2	CHANGED LABEL	04/17/2024	JS



NOTE:

- ① THIS IS ASSUMING THIS IS A STELLAR BUILD WITH PDM INSTALLED IF THERE IS NO PDM ADD DIODE TO SPEED CONTROL
- 2. THIS SCHEMATIC IS FOR A MX MOTOR ONLY
- ③ DISCONNECT FACTORY HARNESS LOCATED DRIVER SIDE IN THE ENGINE BAY
- ④ ADD 12PIN MALE WITH PLUGS



DATE	2023	REV	02/20/23
S.D.	A3	REV	2
SCALE	1:1	REV	2

		DATE	12/2/23
TITLE		REPAIR PTD SOLEVA-1C	
P223			
SIZE	DRAWING NO.	REV	
A3	0167-1034	1	
SCALE		1:1	SHEET 2 OF 2

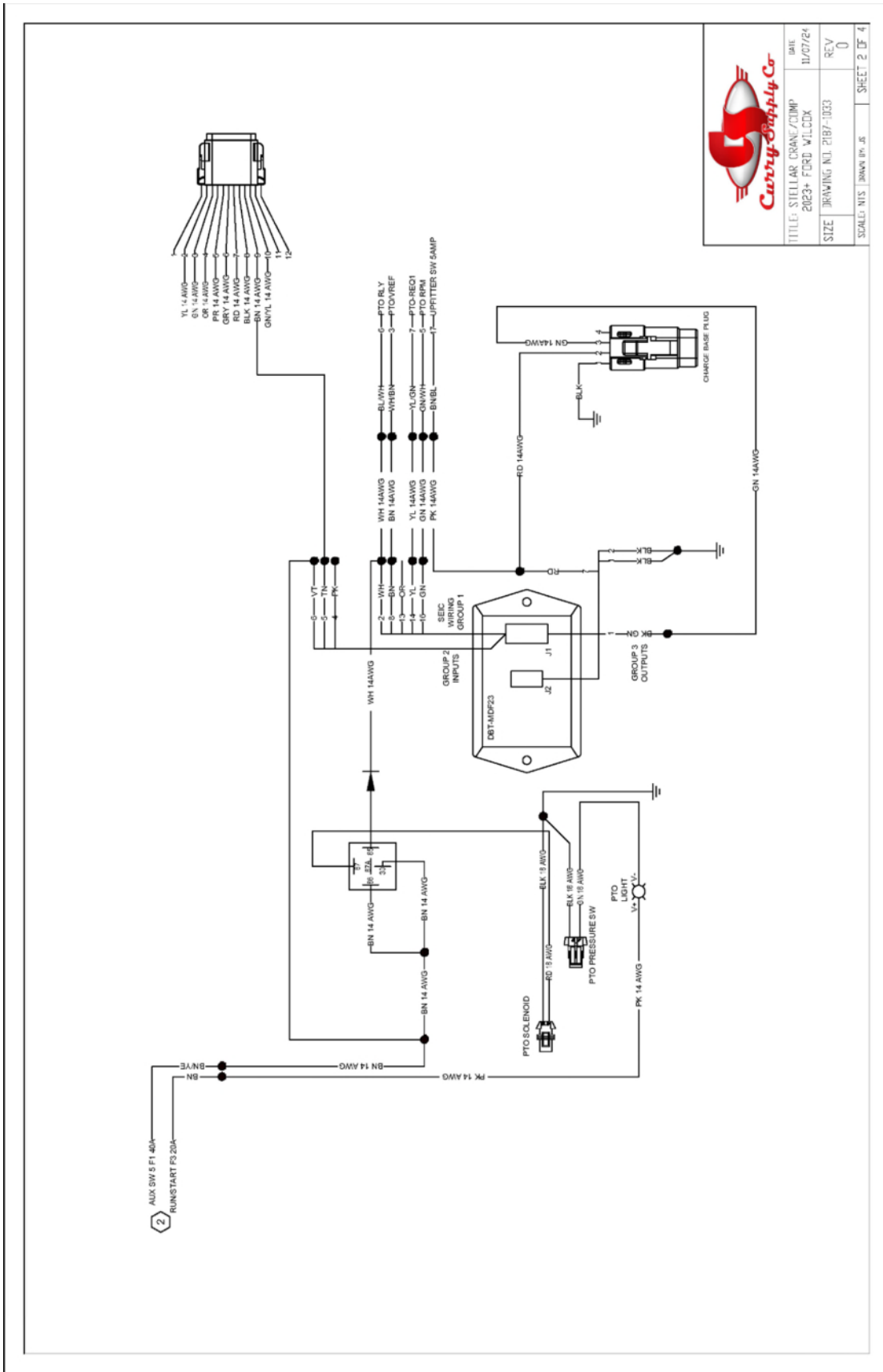


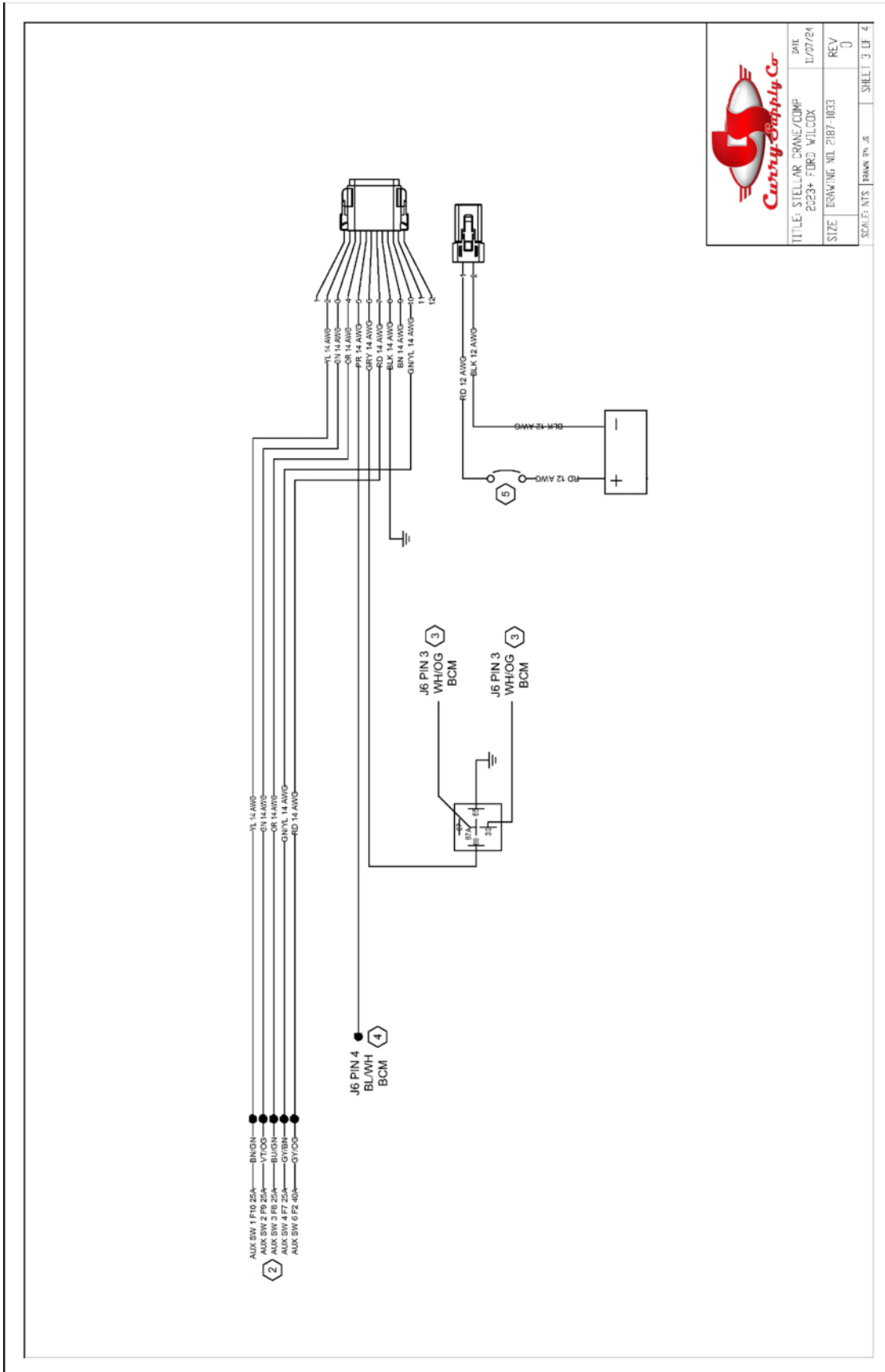
ARROW IS
POINTING TO P111
CONNECTOR
LOCATED DRIVER
SIDE ENGINE BAY

- NOTES:
- 1 LOCATION OF SEC WIRES ARE PASSENGER SIDE KICK PANEL
 - 2 LOCATION OF UPFITTER SWITCH WIRES AND RUN/START IGNITION IS LOCATED PASSENGER SIDE ENGINE COMPARTMENT
 - 3 START STOP WIRES ARE LOCATED PASSENGER SIDE KICK PANEL. WIRE FROM STOP SWITCH TO STOP MOTOR AND LOCATED TO THE BREAKER THE CONNECTOR AND EACH SIDE OF THE WIRE ONLY SHOWN. WIRE FROM STOP SWITCH TO STOP MOTOR AND LOCATED TO THE KICK PANEL SHALL BE LOCATED PASSENGER SIDE KICK PANEL.
 - 4 REMOVE ALL CONNECTORS AND LOCATE PIN 4 (START) SPICE PR 14AWG SPICE PR 14AWG DIRECTLY TO PIN 4 (START)
 - 5 USE BREAKER THAT COMES WITH COMPRESSOR



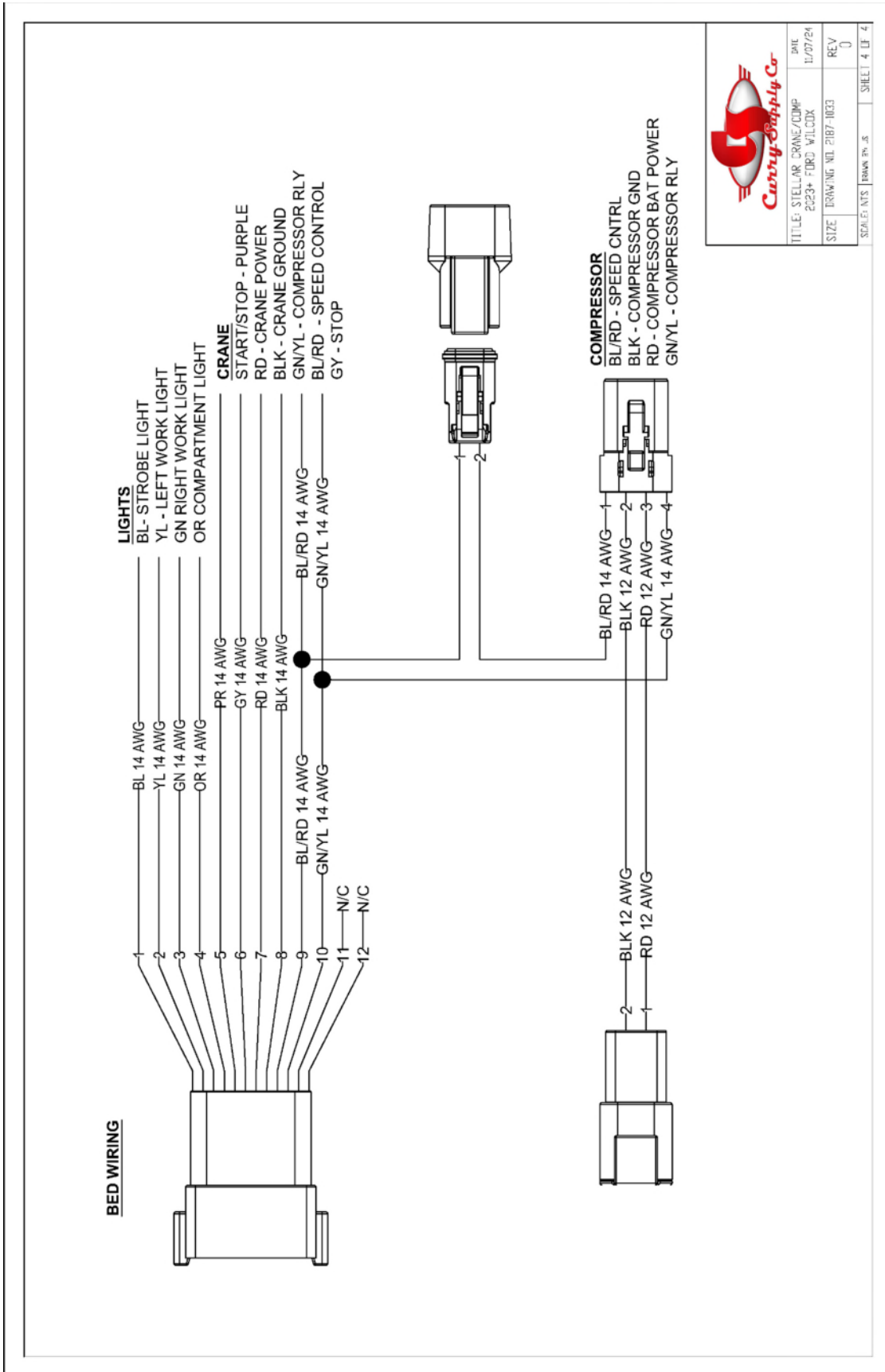
TITLE	STELLAR CRANE/COMP 2023+ FORD W/LCCK	DATE	11/07/24
SIZE	DRAWING NO. 2187-1033	REV	0
SCALE	NTS	DRAWN BY	JR
		SHEET	1 OF 4






TITLE: STELLAR CRANE/CDMP 2023+ FORD WILDCAT	DATE 11/07/24
SIZE: DRAWING NO. 2187-1033	REV 0
SCALE: NTS	DRAWING NO. 2187-1033
TRAWING NO. 2187-1033	SHEET 3 OF 4





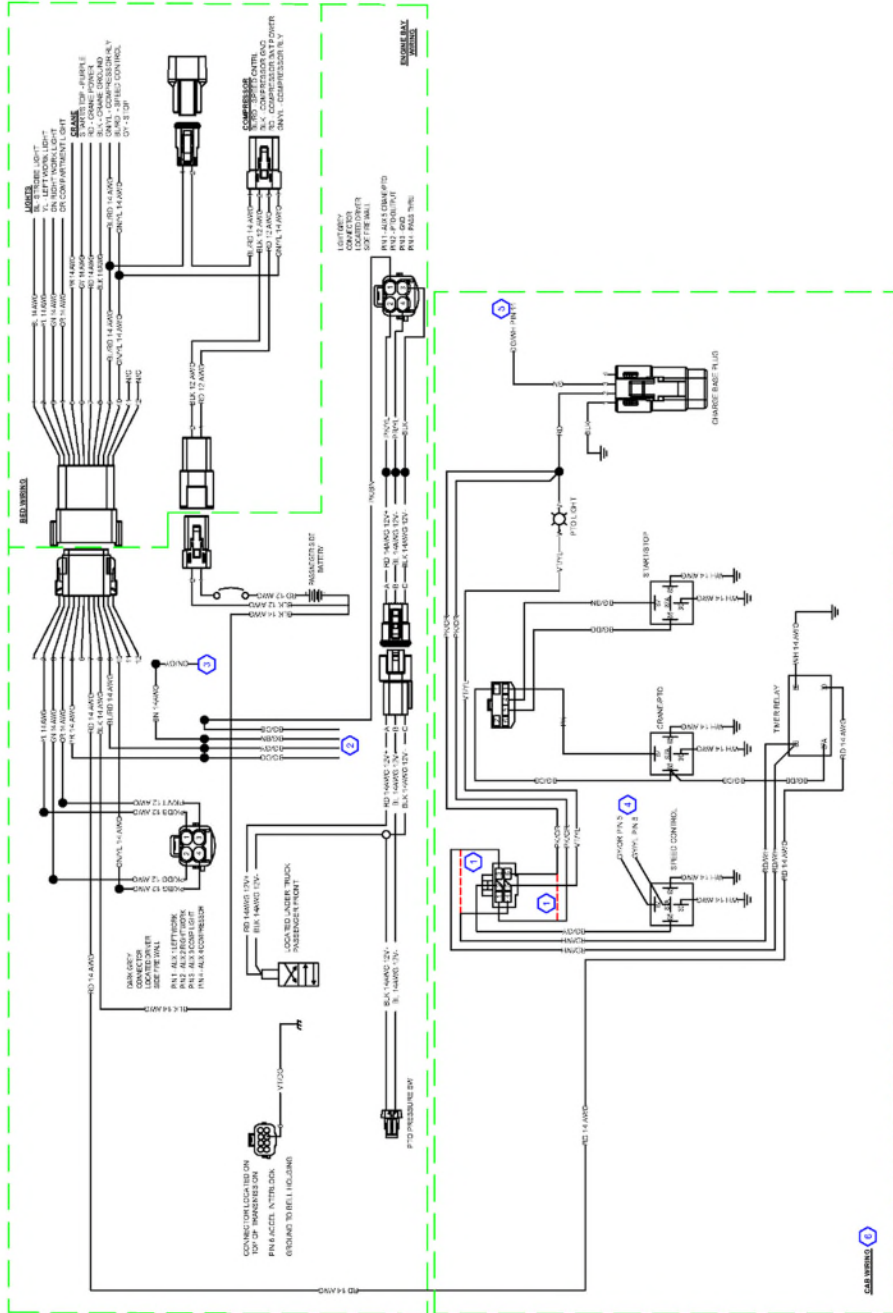

TITLE	STELLAR CRANE/CDMP 2023+ FORD WILDCAT	DATE	11/07/24
SIZE	DRAWING NO. 2187-1033	REV	0
SCALE	AS SHOWN	SHEET	4 OF 4

REVISION TABLE				
ZONE	REV	DESCRIPTION	DATE	APPROVED
	1	SEE NOTE 8	07/03/2024	JS



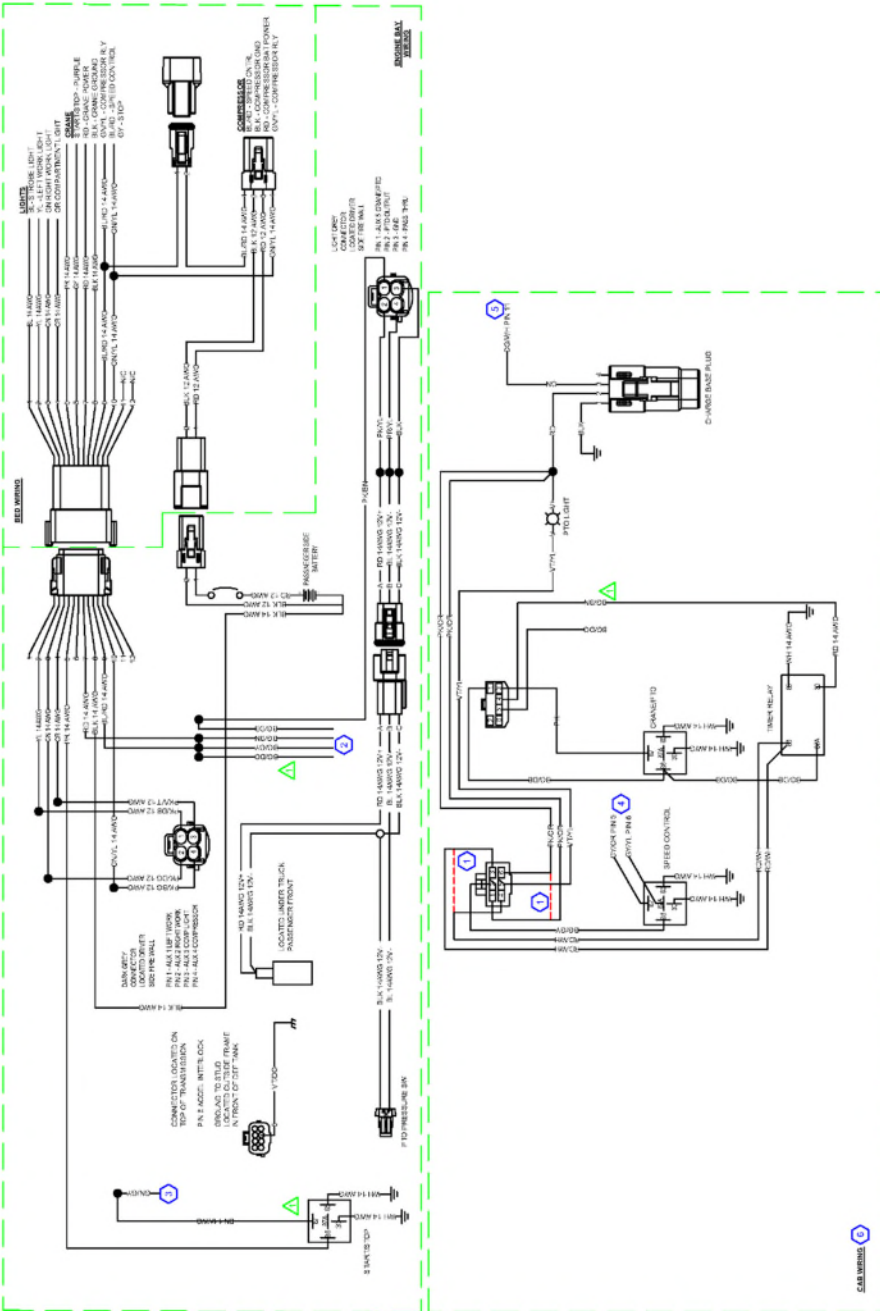
TITLE: RAY 2023 MECH SCHEMATIC STELLAR CRANE/COMP&VILCOX	DATE: 2/20/24
SIZE: DRAWING NO. 2187-1036	REV: 1
SCALE: NTS	DRAWN BY: JS
	SHEET: 1 OF 2

- NOTES:
IF ASSISTANCE IS NEEDED PLEASE CONTACT CURRY SUPPLY ENGINEERING
- 1 CUT EACH LOOP IN HALF AND ROUTE THEM TO THE DESTINATION SHOWN IN THE SCHEMATIC. RED DASH LINE REPRESENTS THAT IT WAS ONCE A LOOP.
 - 2 THESE WIRES ARE GIVEN BY RAM TO USE AS PASS THROUGHS. THEY ARE LOCATED ON THE TOP CENTER OF THE ENGINE BAY DRIVER SIDE.
 - 3 THIS IS THE START/STOP WIRE GIVEN TO US BY RAM. IT IS LOCATED UNDER THE FUSE PANEL WRAPPED IN YELLOW TAPE.
 - 4 THESE WIRES ARE LOCATED ON THE GREEN CONNECTOR/CABLE THAT PLUGS INTO THE VISM MODULE.
 - 5 THIS WIRE IS LOCATED ON THE BROWN CONNECTOR/CABLE THAT TIES INTO THE VISM MODULE.
 - 6 ALL GROUND IN CAB WIRES ARE TO BE LOCATED ON THE DRIVER SIDE AND LOCATED ON DRIVER SIDE LOWER PANEL.
 - 7 ALL CAB WIRES SHALL BE CENTERALLY LOCATED ON THE DRIVERS SIDE.




Curry Supply Co.

TITLE: RAM 2023 MECH SCHEMATIC	DATE: 2/20/24
STELLAR CRANE/COMPACT COX	REV: 0
SIZE: DRAWING NO: 2187-1036	
SCALE: NTS DRAWN BY: JS	SHEET: 1 OF 1



- NOTES:
- IF ASSISTANCE IS NEEDED PLEASE CONTACT CURRY SUPPLY ENGINEERING
- CUT EACH LOOP IN HALF AND ROUTE THEM TO THE DESTINATION SHOWN IN THE DRAWING. THIS REPRESENTS THAT IT WAS ONCE A LOOP.
 - THESE WIRES ARE GIVEN BY RAIN TO USE. THEY ARE LOCATED ON THE TOP CORNER OF THE ENGINE BAY DRIVER SIDE.
 - THIS IS THE START/STOP WIRE GIVEN TO US BY RAM. IT IS LOCATED UNDER THE FUSE PANEL WRAPPED IN YELLOW TAPE.
 - THESE WIRES ARE LOCATED ON THE GREEN CONNECTOR/CABLE THAT PLUGS INTO THE VISIM MODULE.
 - THIS WIRE IS LOCATED ON THE BROWN CONNECTOR/CABLE THAT TIES INTO THE VISIM MODULE.
 - ALL GROUNDS IN CAB WIRING ARE TO BE GROUNDED TO THE GROUND STUD LOCATED ON DRIVER SIDE LOWER PANEL.
 - ALL CAB WIRING SHALL BE CENTRALLY LOCATED ON THE DRIVERS SIDE.
 - MOVING START/STOP RLY TO ENGINE BAY PER REQUEST BY ASSEMBLY. THIS ALLOWS US TO USE A PASS THROUGH FOR THE CRANE OUTPUT INSTEAD OF DRILLING A HOLE THROUGH THE FIRE WALL.



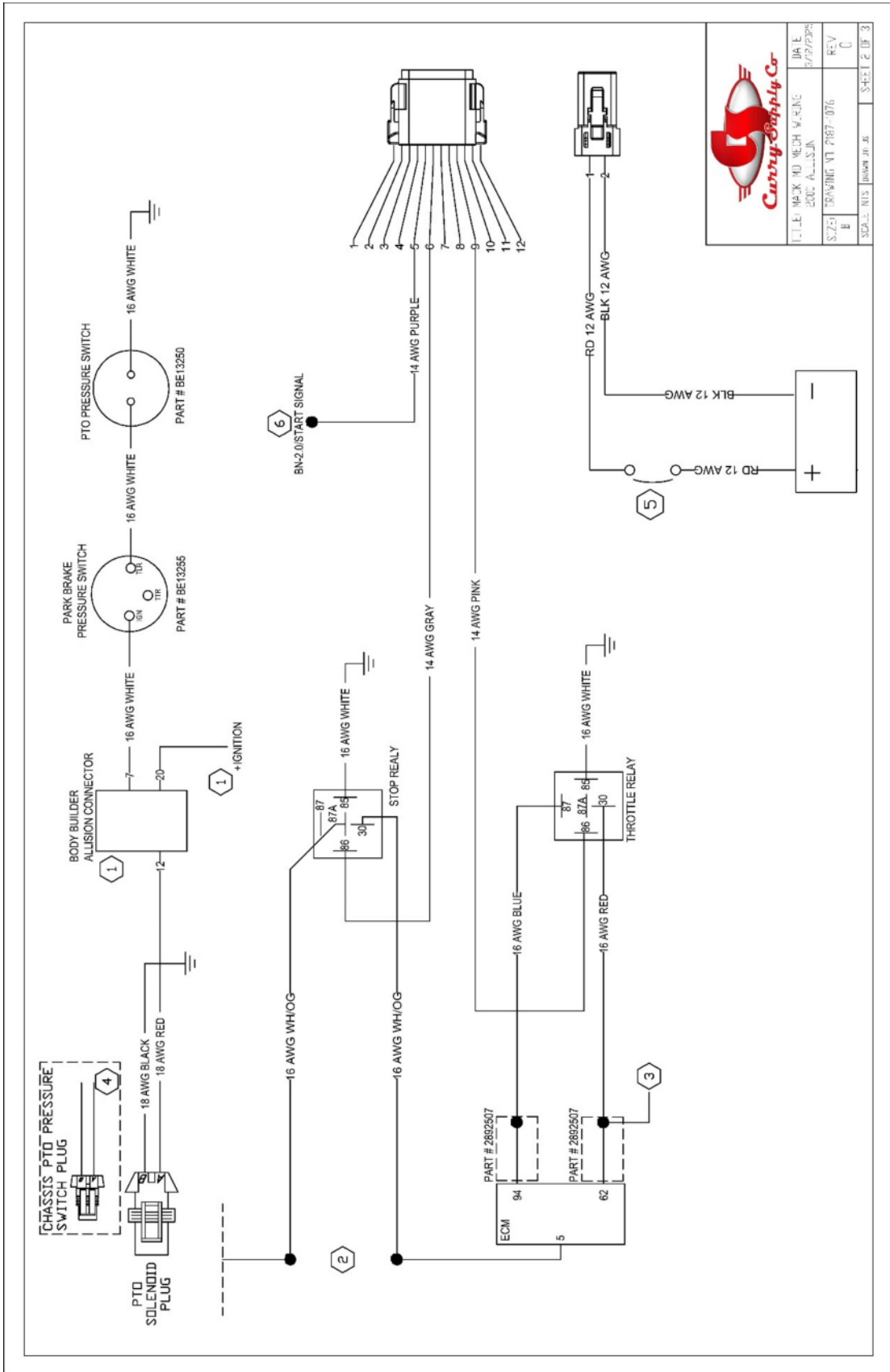
TITLE: RAM 2023 MECH SCHEMATIC STELLAR CRANE/COMPACTOR	DW/C: 2/23/24
SIZE: DRAWING NO. 2187-1036	REV: 1
SCALE: NTS	SHEET: 1 OF 2



NOTES:

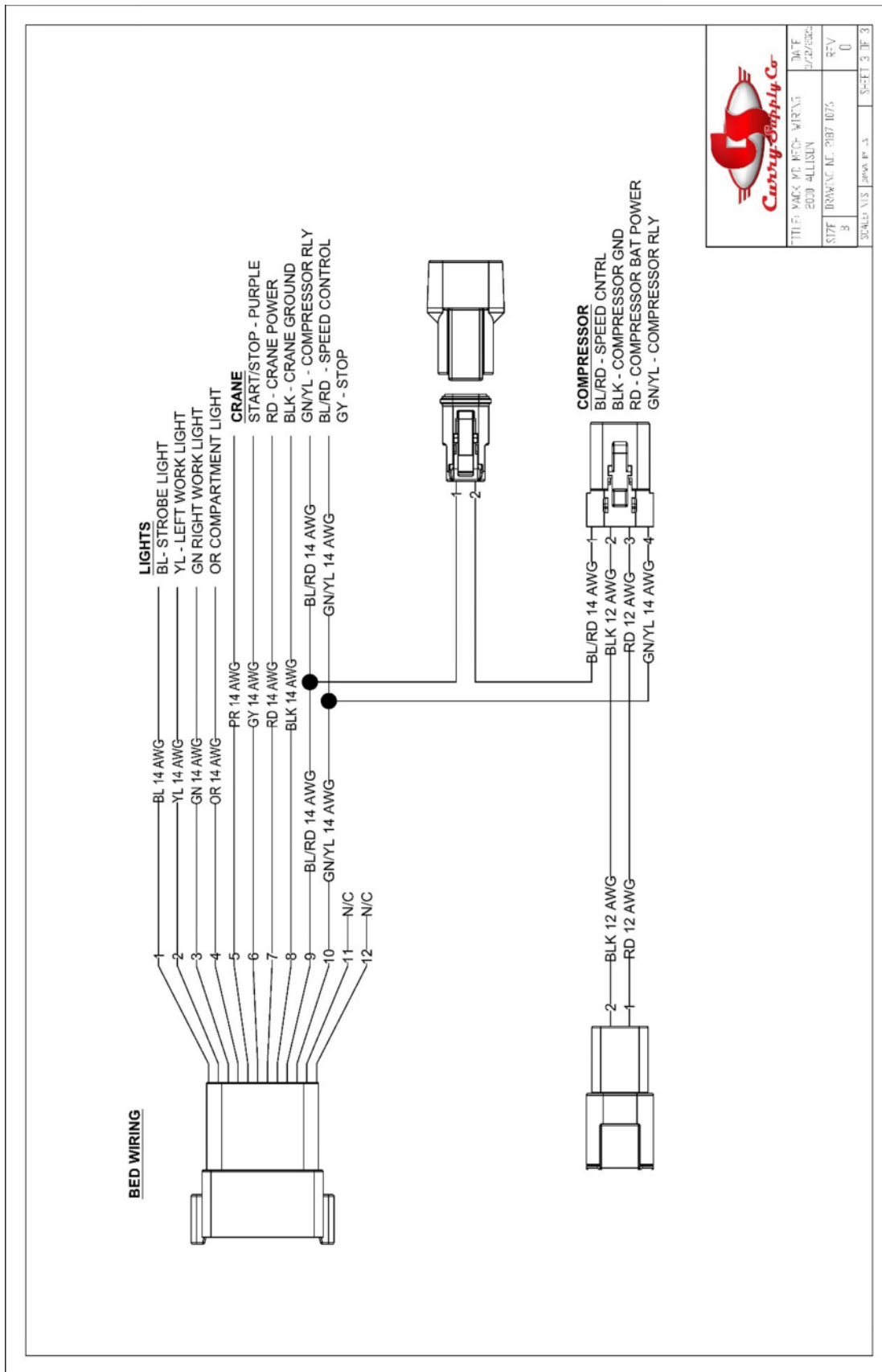
- 1 LOCATION OF THE BODY BUILDER CONNECTOR AND IGN SIGNAL IS DRIVERSIDE KICK PANEL
- 2 LOCATE PIN 5 ON THE ECM CONNECTOR, CUT THE WIRE AND RUN ONE SIDE TO 30 AND THE OTHER SIDE TO 87A AS SHOWN IN THE DIAGRAM
- 3 IF THE WIRE IS POPULATED SIMPLY SPLICE INTO THE WIRE DO NOT REMOVE!
- 4 YOU WILL NEED TO SWAP THE PTO PLUG ON THE TRUCK HARNESS TO MATE CORRECTLY WITH PTO
- 5 USE BREAKER THAT COMES WITH COMPRESSOR
- 6 LOCATE BROWN WIRE ON THE BACK OF THE KEY SWITCH. THIS IS THE START WIRE FOR THE CHASSIS

		TITLE	MP2K VJ PTO- WIRING	DATE	3/17/2025
		DESIGNED BY	ALLISON	REV	0
SIZE	3	DATE	2/18/2025	REV	0
SCALE	NIS	NOVA P. 5	SHEET 1 OF 3		



		FILE NO: 2017-076	DATE: 3/2/2018
		REV: 0	REV: 0
CURRY SUPPLY CO. 100 W. MAIN ST. BRANFORD, VT 05753 TEL: 802-253-1111 FAX: 802-253-1112 WWW.CURRYSUPPLY.COM		SHEET 1 OF 3	






TITLE	WCC - WREN	DATE	
DESIGN	4LLSDV	REV	0
STATION	BRACAC - 2187 1076	REV	0
SCALE	AS SHOWN	SHEET	3 OF 3

SECTION 6

Troubleshooting

PROBLEM	POSSIBLE CAUSE	REMEDIES
Truck cranks with the key switch but will not run.	The theft deterrent disable switch is in the "ON" position (if equipped).	Turn the theft deterrent switch off.
The truck engine runs erratically or stalls when controls are operated.	The idle speed is too slow.	Increase the engine speed.
	The engine is still cold.	Wait until the truck engine is warm.
	The engine needs a tune up.	Call Curry Supply Company for service 800.345.2829.
The tool compartment key will not go into the lock.	Shield is blocking insertion of the key.	Slide shield out of the way with the tip of the key while pushing the key into the lock.
	The lock is full of ice.	Spray lock with de-ice spray.
	The key is the wrong one for the lock.	Use the correct key.
No response from hydraulic controls	The truck engine is not running.	Start the engine.
	PTO is not engaged.	Engage the PTO.
	Low hydraulic oil.	Add hydraulic oil.
	Relief valve is set too low.	Call Curry Supply Company for service 800.345.2829.
	Pinched pressure or return hydraulic line.	Repair or replace.
	Defective hydraulic pump.	Call Curry Supply Company for service 800.345.2829.
	Pressure compensated pump set too low.	Call Curry Supply Company for service 800.345.2829.

Slow hydraulic operations.	Valve spools are not fully open.	Call Curry Supply Company for service 800.345.2829.
	Oil is too heavy or cold.	Replace oil to correct viscosity for operating range temperature.
	Low hydraulic oil.	Add oil.
	System operating pressure or main system relief set too low.	Call Curry Supply Company for service 800.345.2829.
	Dirt or foreign matter in hydraulic system, filters valves, etc....	Call Curry Supply Company for service 800.345.2829.
	Pinched pressure or return hydraulic line.	Repair or replace.
	Engine speed is too low.	Increase engine speed.
	Excessive leakage in pump or control valve due to wear.	Call Curry Supply Company for service 800.345.2829.
The hydraulic system is overheating.	The main system relief valve is set too low or is open because of contamination.	Call Curry Supply Company for service 800.345.2829.
	The hydraulic system operating pressure is too high.	Call Curry Supply Company for service 800.345.2829.
	Excessive hydraulic oil flow because of improper PTO ratio or the truck engine is operating at an excessive speed.	Reduce engine speed. If still overheating, refer to the manufacturer's service and maintenance manual.
Crane control pendant vibrates.	Weight limit has been reached.	Move the crane to a better spot so it can lift more. See operation limit labels posted next to the crane operation controls.
Air compressor runs but not building pressure	Air drain valve is open.	Close the air drain valve.
	Loose air hose clamp.	Tighten clamp.
Diaphragm pump cycles at stall or fails to hold pressure at stall.	Worn check valve balls, seats or O-rings.	Replace.
	Air valve is stuck or dirty.	Disassemble and clean air valve. Use filtered air.

Diaphragm pump will not cycle, or cycles once and stops.	Check valve ball severely worn and wedged in seat or manifold.	Replace ball and seat.
Diaphragm Pump operates erratically.	Clogged suction line.	Inspect; clear.
	Sticky or leaking balls.	Clean or replace.
	Diaphragm ruptured.	Replace.
	Restricted exhaust.	Remove restriction.
Air bubbles in hydraulic fluid from the diaphragm pump.	Suction line is loose.	Tighten.
	Diaphragm is ruptured.	Replace.
	Loose inlet manifold, damaged seal between manifold and seat, damaged O-rings.	Tighten manifold bolts or replace seats or O-rings.
	Loose diaphragm shaft bolt.	Tighten or replace.
	Damaged O-ring.	Replace.
Dispensing meter display does not wake up or displays unintelligent characters.	Electronic control is malfunctioning.	Replace electronic control.
	Batteries are depleted within the meter unit.	Replace battery.
Slow or no fluid flow.	Strainer within dispensing meter unit clogged.	Clean or replace strainer.
	Pump pressure is low.	Increase pump pressure.
	Shut off valve is not fully open.	Fully open shut off valve.
	Foreign material is jammed in the meter element.	Call Curry Supply Company for service 800.345.2829.

20-Mar-25



For technical help or parts, please have the model number available and call our customer service 800.345.2829

SECTION 7

Warranty & Proprietary Information

Curry Supply Company warrants products designed and manufactured by Curry Supply Company to be free from defects in material and workmanship under proper use and maintenance. Products must be installed and operated in accordance with Curry Supply's written instructions and capacities. All warranty periods will begin on the in-service date as defined in this document. This warranty shall cover the following Curry Supply Products:

	1 Year	2 Years	Variable
On Road Water / Flatbed / Crash Attenuator / Lube Skid			
Curry Manufactured Components		✓	
Paint Coverage on Curry Manufactured Parts	✓		
Parts	✓		
Repair Labor	✓		
Off Road / Dump / Industrial Carrier / Vacuum / Winch / Railroad			
Tank	✓		
Tank Exterior Paint Coverage	✓		
Parts	✓		
Repair Labor	✓		
Mechanics			
Body (Refer to Manufacture Warranty)			✓
Crane (Refer to Manufacture Warranty))			✓
Paint Coverage (Refer to Manufacture Warranty)			✓
Parts (Refer to Manufacture Warranty)			✓
Repair Labor (Refer to Manufacture Warranty)			✓
Lube			
Body (Refer to Manufacture Warranty)	✓		
Tanks (Refer to Manufacture Warranty)			✓
Parts	✓		
Repair Labor	✓		
Paint Coverage	✓		
Utility Lift			
Body (Refer to Manufacture Warranty)			✓
Lift (Axion)			✓
Parts	✓		
Repair Labor	✓		
Body Paint Coverage	✓		

Definitions

Curry Supply Manufactured Components/Structures – Includes any structural weldment or load bearing support structure manufactured by Curry Supply Company.

Rust Through on Curry Supply Components/Structures – Rust Through is defined as a hole in the metal caused by corrosion. Excluded is corrosion caused by external caustics, including but not limited to improper cleaning material, road salt and other chemicals left on the structure for extended periods of time.

Paint Coverage on Curry Supply Manufactured Parts – Curry Supply guarantees that exterior paint will not fail in terms of adhesion, blistering or unreasonable loss of color or gloss for a 1-year period. Excluded is damage such as chips, dents, scratches, tank interior coating, and corrosion due to caustic chemicals (e.g. Brine Solution / Leachate) and dirt build-up. Regular cleaning and maintenance of the product to remove external factors is expected to keep this warranty in force.

Vendor Supplied Components/Structures – Products purchased by Curry Supply from outside vendors. These items shall be covered by the warranty offered by the respective manufacturer only. Curry Supply does not obligate itself to any such warranty.

Warranty Process

Curry Supply's obligation under this warranty is limited to, and the sole remedy for any such defect shall be the repair and/or replacement (at Curry Supply's option) of the unaltered part and/or component in question. Curry Supply after-sales service personnel must be notified by telephone, email, or letter of any warranty applicable damage within fourteen (14) days of its occurrence. If possible, Curry Supply will ship the replacement part within 24 hours of notification by the most economical, yet expedient, means possible. Expedited freight delivery will be at the expense of the owner.

Warranty claims must be submitted and shall be processed in accordance with Curry Supply's established warranty claim procedure. Curry Supply after-sales service personnel must be contacted prior to any warranty claim. A return materials authorization (RMA) may be issued to the claiming party prior to the return of warranty parts. Parts returned without prior authorization will not be recognized for warranty consideration. All damaged parts must be returned to Curry Supply freight prepaid; freight collect returns will be refused. Freight reimbursement of returned parts will be considered as part of the warranty claim.

Warranty Repair

Warranty service will be performed by any Curry Supply factory, Curry Supply mobile technician, Curry Supply authorized service partner, or by the affected owner. At the time of requesting warranty service, Curry Supply after-sales service personnel will verify date of delivery of the product. The owner shall be obligated to pay for any overtime labor requested of the servicing company by the owner, any field service call charges, and any towing and/or transportation charges associated with moving the equipment to the designated repair/service provider.

All obligations of Curry Supply and its service providers shall be voided if someone other than an authorized Curry Supply provider performs other than routine maintenance service without prior written or verbal approval from Curry Supply. In the case repair work is performed on a Curry Supply-manufactured product, original Curry Supply parts must be used to keep the warranty in force. The warranty may also be voided if the product is modified or altered in any way not approved, in writing, by Curry Supply.

Warranty Limitations/Responsibilities

This warranty covers only defective material and workmanship. It does not cover depreciation or damage caused by normal wear and tear, accident, mishap, untrained operators, or improper or unintended use. The owner has the obligation of performing routine care and maintenance duties as stated in Curry Supply's written instructions, recommendations, and specifications. Any damage resulting from owner/operator failure to perform such duties shall void the coverage of this warranty. The owner will pay the cost of labor and supplies associated with routine maintenance.

The only remedies the owner has in connection with the breach or performance of any warranty on the Curry Supply product specified are those set above. In no event will Curry Supply, or any company affiliated with Curry Supply, be liable for business interruptions, costs of delay, or for any special, indirect, incidental, or consequential costs or damages. Such costs may include, but are not limited to, loss of time, loss of revenue, loss of use, wages, salaries, commissions, lodging, meals, towing, hydraulic fluid, or any other incidental cost.

All products purchased by Curry Supply from outside vendors shall be covered by the warranty offered by that respective manufacturer only. Curry Supply does not participate in, or obligate itself to, any such warranty.

Curry Supply reserves the right to make changes in design or improvement upon its products without imposing upon itself the same upon its products theretofore manufactured.

20-Mar-25

This warranty will apply to all Curry Supply manufactured components/structures and upfit workmanship shipped from Curry Supply's factory. The warranty is for the use of the original owner only and is not transferable without prior written permission from Curry Supply.

Curry Supply After-Sales Contact Information:

Phone: (800) 345-2829

Email: service@currysupply.com

Mailing Address: 1477 DeGol Industrial Drive, Hollidaysburg, PA 16648

THIS WARRANTY IS EXPRESSLY IN LIEU OF ANY OTHER WARRANTIES, EXPRESS OR IMPLIED, INCLUDING ANY WARRANTY OF MERCHANTABILITY OR FITNESS FOR A PARTICULAR PURPOSE. REMEDIES UNDER THIS WARRANTY ARE LIMITED TO THE PROVISION OF MATERIAL AND SERVICES, AS SPECIFIED HEREIN. CURRY SUPPLY COMPANY IS NOT RESPONSIBLE FOR INCIDENTAL OR CONSEQUENTIAL DAMAGES.

EXCEPT AS STATED, THERE IS NO WARRANTY, EXPRESS OR IMPLIED, IN CONNECTION WITH THE DESIGN, MANUFACTURE, SALE OR USE OF THE MACHINERY, ACCESSORIES, EQUIPMENT AND PARTS SOLD BY CURRY SUPPLY CO. CURRY SUPPLY COMPANY'S LIABILITY ON ITS WARRANTY SHALL IN NO EVENT EXCEED THE COST OF THE ITEM OF SALE.

