

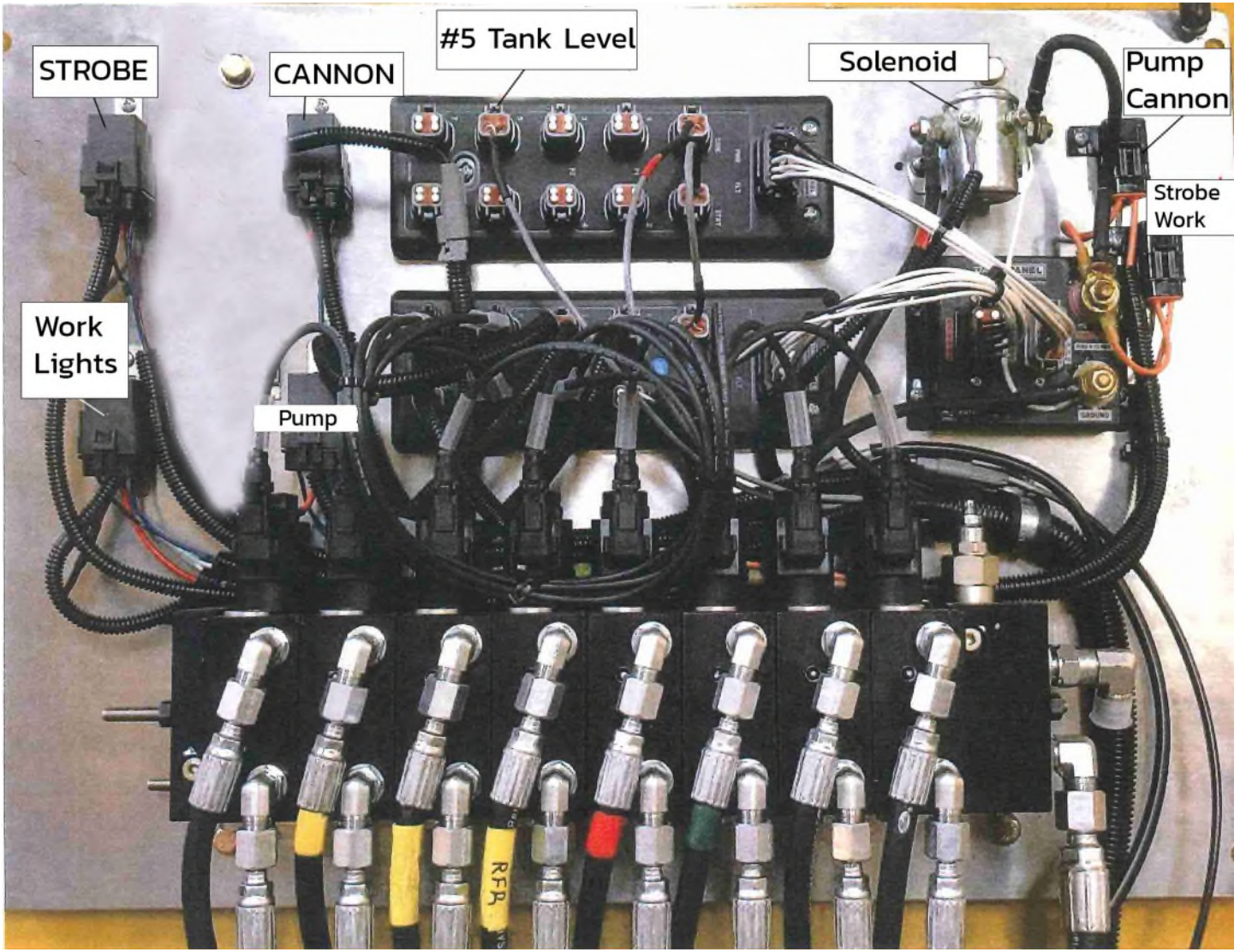
Water Truck Off Road Articulated Schematics

| | |
|--|-------------------------|
| Hydraulic Box Open Picture SCH1-1 | Page 2 |
| Hydraulic Valve System SCH2-1 | Page 3 |
| Hydraulic Valves 2S, 3R, 2 Front Spray Heads & Level Sensor SCH2-2 | Page 4 |
| Hydraulic Valve System 2 side, 3 rear, and Level Sensor SCH2-3 | Page 5 |
| 2 Line Dump Cylinder Connections SCH3-1 | Page 6 |
| 4 Line Dump Cylinder Connections SCH3-2 | Page 7 |
| Chassis Harness Connection Overview SCH4-1 | Page 8 |
| Wire Harness Diagram SCH5-1 | Page 9 |
| Wire Harness Diagram SCH5-2 | Page 10 |
| Rear Wiring ID Picture SCH6-1 | Page 11 |
| Hale Primer Wiring SCH7-1 | Page 12 |
| Elkhart Nitro Water Canon Layout SCH8-1 | Page 13 |
| Elkhart Nitro Joystick Electric SCH8-2 | Page 14 |
| Elkhart Nitro Position Sensor SCH8-3 | Page 15 |
| Elkhart Nitro Monitor Harness SCH8-4 | Page 16 |
| Elkhart Nitro Connector Pin Diagram SCH8-5 | Page 17 |
| Hydrema 24v Hoist Circuit Hydraulic Box SCH9-1 | Page 18 |
| Hitachi Wiring Diagram SCH10-1 | Page 19 |
| Hitachi Hose Connection Diagram SCH10-2 | Page 20 |

CAUTION

PLEASE CONTACT CURRY SUPPLY COMPANY BEFORE ATTEMPTING ANY CHANGES TO THE ELECTRICAL SYSTEMS. DOING SO MAY CAUSE EQUIPMENT DAMAGE OR VOID WARRANTY.

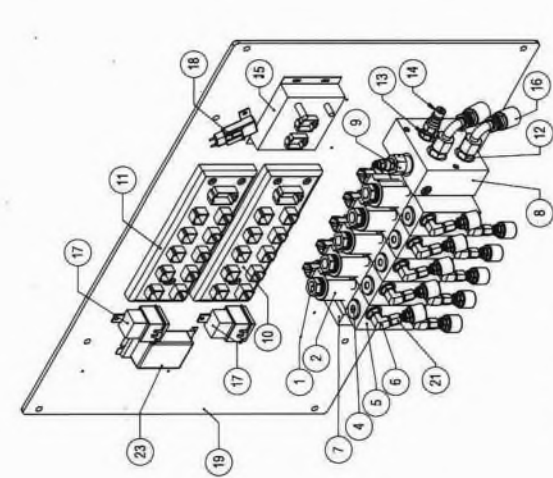
HYDRAULIC BOX OPEN VIEW





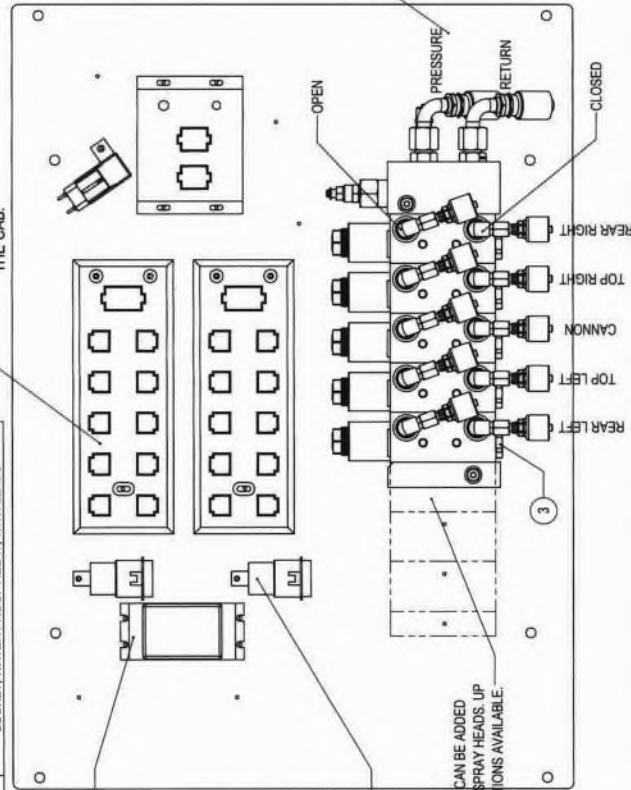
| ITEM NO. | QTY. | PART NO. | STOCK DESC. |
|----------|------|----------------|--|
| 1 | 5 | 865314219 | VALVE, SOLENOID, SV10/24/01/00/00-B/00 |
| 2 | 5 | 171149519 | 24V DE COIL, M16-240-26W-DE |
| 3 | 5 | 11169108 | VALVE, CHECK, RPC06-5/00 PO |
| 4 | 5 | 920000619 | PLUG, CAVITY, NCS0600 |
| 5 | 5 | 11195193 | MVB10-W-LH-65 |
| 6 | 10 | 6801-4-6 | FITTING, 1/4" JIC - 3/8 MOR, 90 DEG, STEEL |
| 7 | 1 | 11187937 | MVB10-E |
| 8 | 1 | 1123610 | INLET WICAVITY FOR REDUCING VALVE |
| 9 | 1 | 83020488 | VALVE, REDUCING, PRMP PRMP 064 EN-1-00-35 |
| 10 | 1 | DP-34004-5-100 | OUTPUT BLOCK (COMPUTER) |
| 11 | 1 | DP-34004-1 | INPUT/OUTPUT COMBO BLOCK |
| 12 | 2 | 5400-8 | FITTING, 1/2" MJ - 1/2" MB |
| 13 | 1 | 6401-6-4 | FITTING, 3/8" MB - 1/4" MP, STEEL |
| 14 | 1 | H27-2 | FITTING, PLUG, 1/4" COUPLING - FP |
| 15 | 1 | DP-37055-2 | 2 CONNECTOR POWER SPLITTER |
| 16 | 2 | G25179-0608X | FITTING, 1/2" HOSE - 1/2" FJ SWIVEL, 90 DEG SHORT, STEEL |
| 17 | 2 | H41386541 | RELAY, 24V, WATER PROOF, 10/20A |
| 18 | 1 | 784623 | FUSE HOLDER, IN-LINE, ATO/ATC |
| 19 | 1 | 1594-3300 | OFF ROAD HYD. VALVE BOX |
| 20 | 10 | G25170-0404X | SPRAY HEAD HOSE CONNECTIONS |
| 21 | 1 | 4657-0120 | FITTING, 1/4" HOSE - 1/4" FJ SWIVEL, STEEL |
| 22 | 1 | PS1-DC20903-W | HOSE, 1/4" HYDRAULIC, MEDIUM PRESSURE |
| 23 | 1 | PS1-DC20903-W | CONVERTER, 12/24V - 9V DC |
| 24 | 2 | S2MUB | SOCKET, WATER PROOF RELAY, WITH LEADS |

| QTY. | PART NO. | STOCK DESC. | NOTES |
|------|--------------------|------------------------------|--|
| 1 | DP-33026-3-002 | KEYPAD/DISPLAY, 24V DC | LOCATED ON THE BACK OF THE CONTROL PAD. |
| 1 | DP-34042-402 | TERMINAL RESISTOR | |
| 2 | M-D185-XDBKIT | 18 PIN CONNECTOR KIT | |
| 1 | DP-38022-400 | PSF-2 CONNECTOR KIT | |
| 1 | RAM-202U | RAM MOUNT, 2.5" BASE | |
| 1 | RAM-107BU | RAM MOUNT, 1.5" RUGGED BASE | |
| 1 | RAM-201U | RAM MOUNT, DOUBLE SOCKET ARM | |
| 1 | 7072-77501-7540060 | PVAS ASSEMBLY KIT | ROD CONNECTOR KIT, PART NUMBERS DIFFER BASED ON THE AMOUNT OF VALVES USED. |
| 3 | | Y-CABLE, 2' LENGTH | |



COMBO OUTPUT BLOCK IS USED WITH A TANK FILL INDICATOR. WHEN A TANK IS EQUIPPED WITH A DIGITAL LEVEL INDICATOR, TOGGLE THE BOTTOM RIGHT BUTTON ON THE CONTROL PANEL BRINGS UP THE FILL DISPLAY ON THE CONTROLLER IN THE CAB.

ITEMS 1, 2, 3, 4, 5, 6, 7, & 8 ARE TIED TO THE SPRAY HEAD COUNT. THIS ASSEMBLY MAKES UP THE CONTROL SYSTEM FOR (1) SPRAY HEAD UNIT.



POWER CONVERTER USED ON CAT MODEL

RELAYS SHOULD NEVER BE INSTALLED UPSIDE DOWN. DOUBLE CHECK CONNECTIONS TO MAKE SURE UNIT IS WEATHER SEALED.

VALVE SECTIONS CAN BE ADDED FOR ADDITIONAL SPRAY HEADS. UP TO 8 CONFIGURATIONS AVAILABLE.

OPEN CIRCUIT ALLOWS THE SPRAY HEAD TO BE OPEN AND PUSH WATER. CLOSED CIRCUIT HOLDS HYDRAULIC PRESSURE TO KEEP THE SPRAY HEAD CLOSED. CHECK VALVE (3) KEEPS THE SYSTEM PRESSURE FROM BLEEDING OFF WHEN VALVE IS CLOSED.

Curry Supply Co.

TITLE: HYDRAULIC VALVE SYSTEM, OFF ROAD WATER, 5 VALVE

REV 0

SIZE B

DRAWING NO. 1634-7800

WEIGHT:

PART NO. 1634-7800

DATE 10/07/20

MAKE MLC

MODEL BY MLC

DRAWN BY MLC

MATERIAL ASM

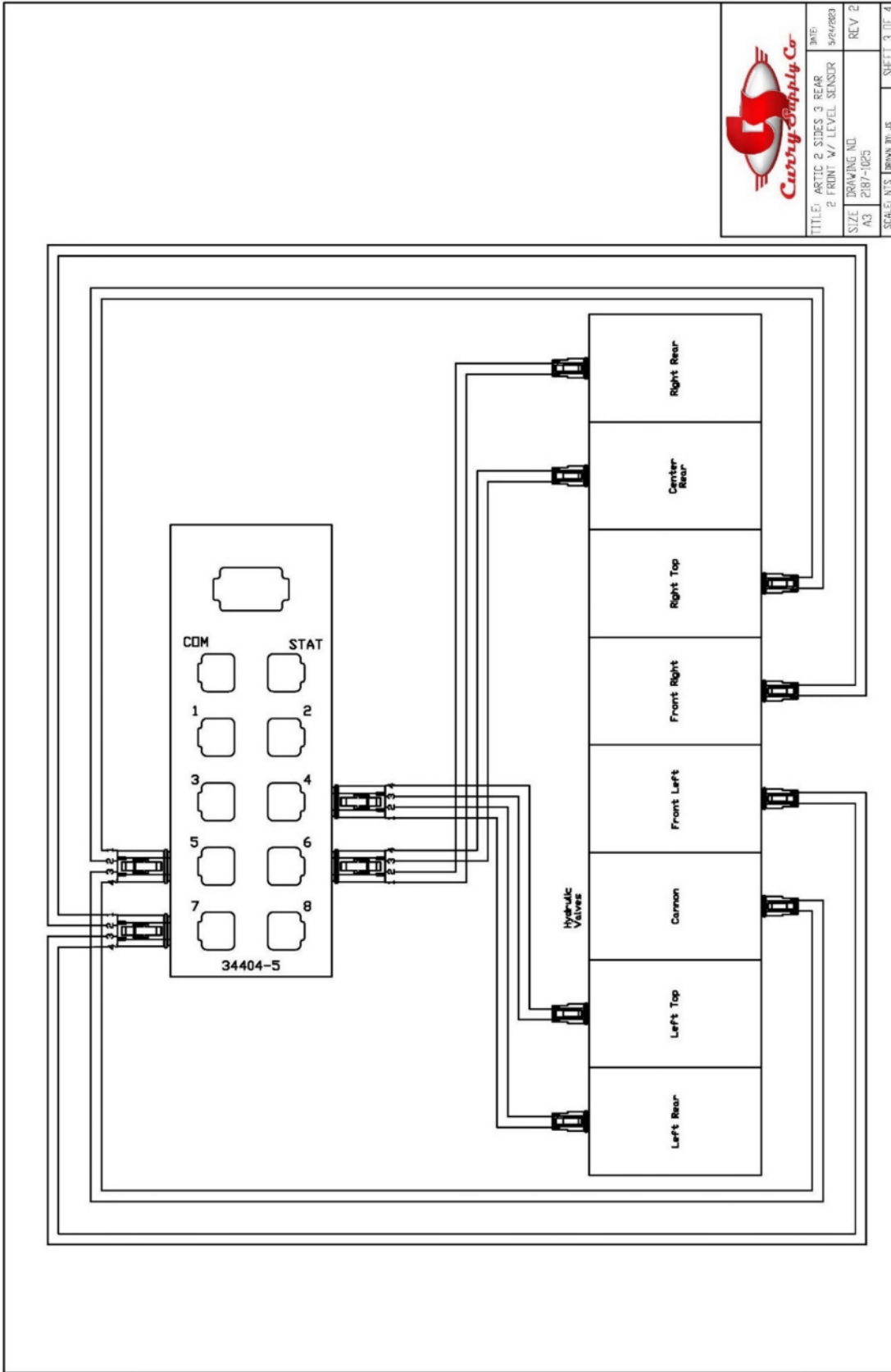
PROCESS A

THICKNESS

UNLESS OTHERWISE SPECIFIED:
 FRACTIONAL: ± 1/16"
 ANGULAR: ± 1°
 TWO PLACE DECIMAL: ± 0.01"
 THREE PLACE DECIMAL: ± 0.005"


DO NOT SCALE DRAWING

PROPERTY AND CONFIDENTIAL INFORMATION CONTAINED IN THIS DRAWING IS THE SOLE PROPERTY OF CURRY SUPPLY CO. AS A WHOLE OR PART THEREOF. REPRODUCTION OF THIS DRAWING WITHOUT THE WRITTEN PERMISSION OF CURRY SUPPLY COMPANY IS PROHIBITED.

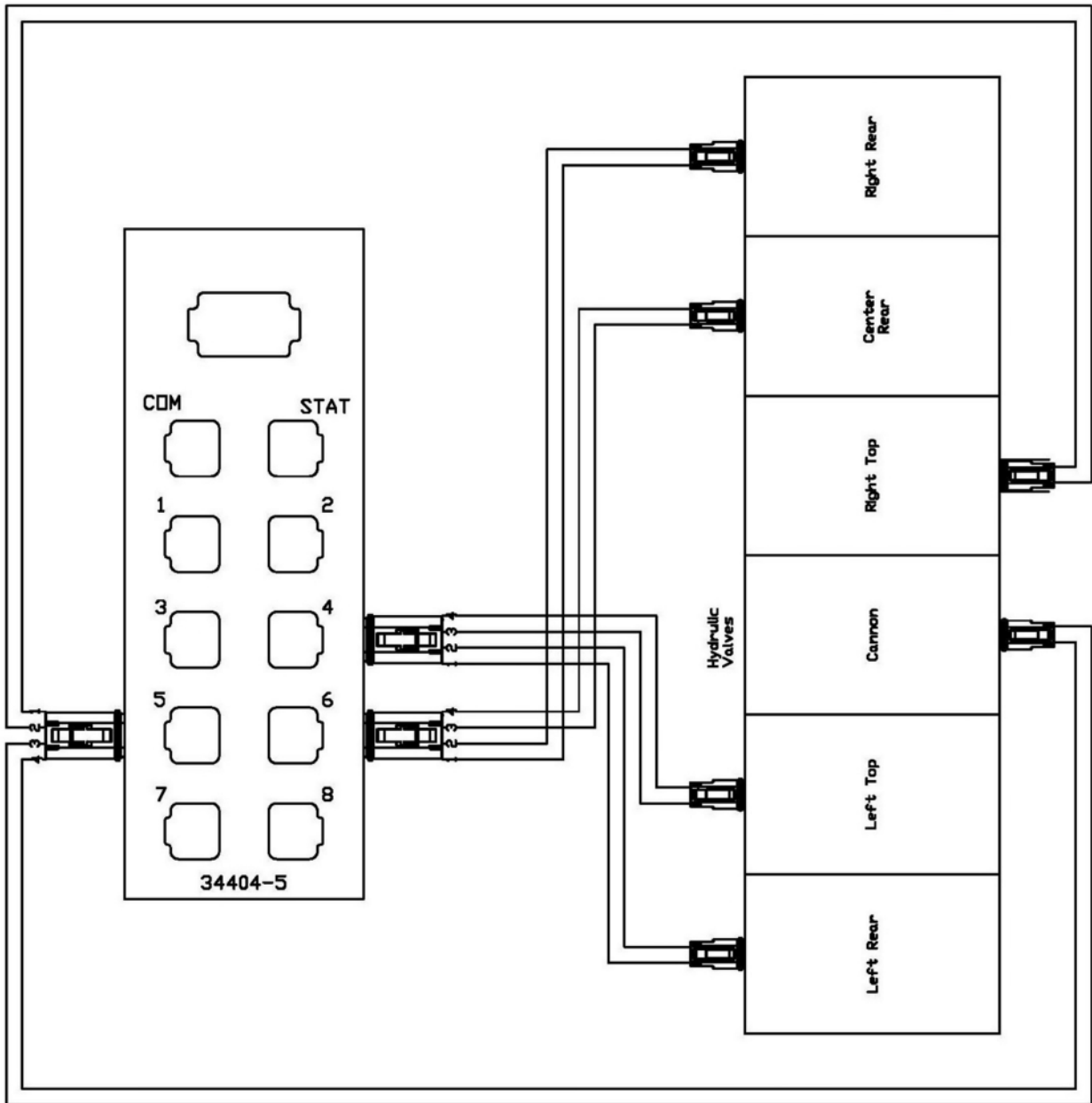


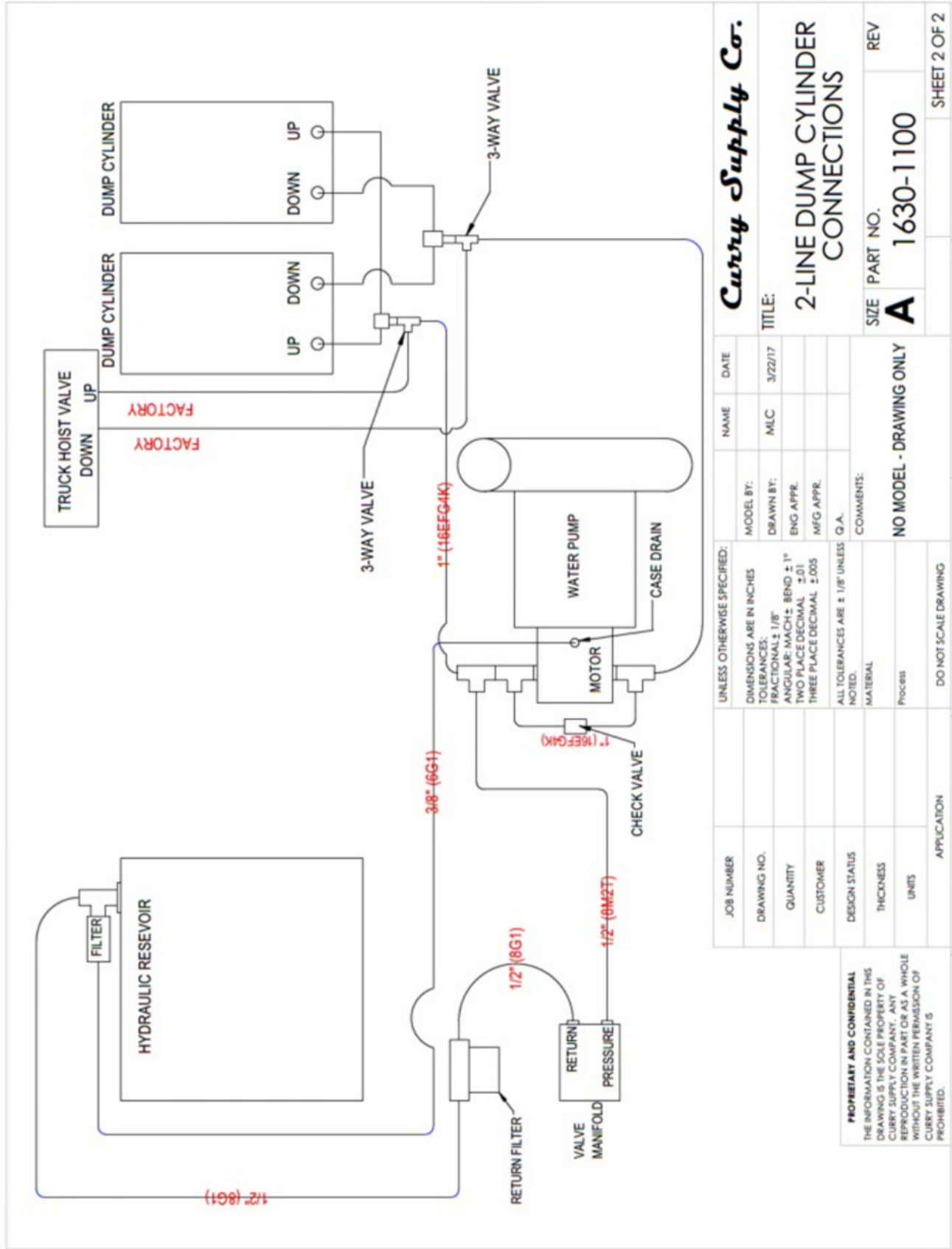
| | |
|--|----------------|
| TITLE: ARTIC 2 SIDES 3 REAR 2 FRONT W/ LEVEL SENSOR | DATE: 5/6/2024 |
| SIZE: DRAWING NO. A3 2187-1025 | REV: 2 |
| SCALE: NTS | DRAWN BY: JS |
| | SHEET: 3 OF 4 |





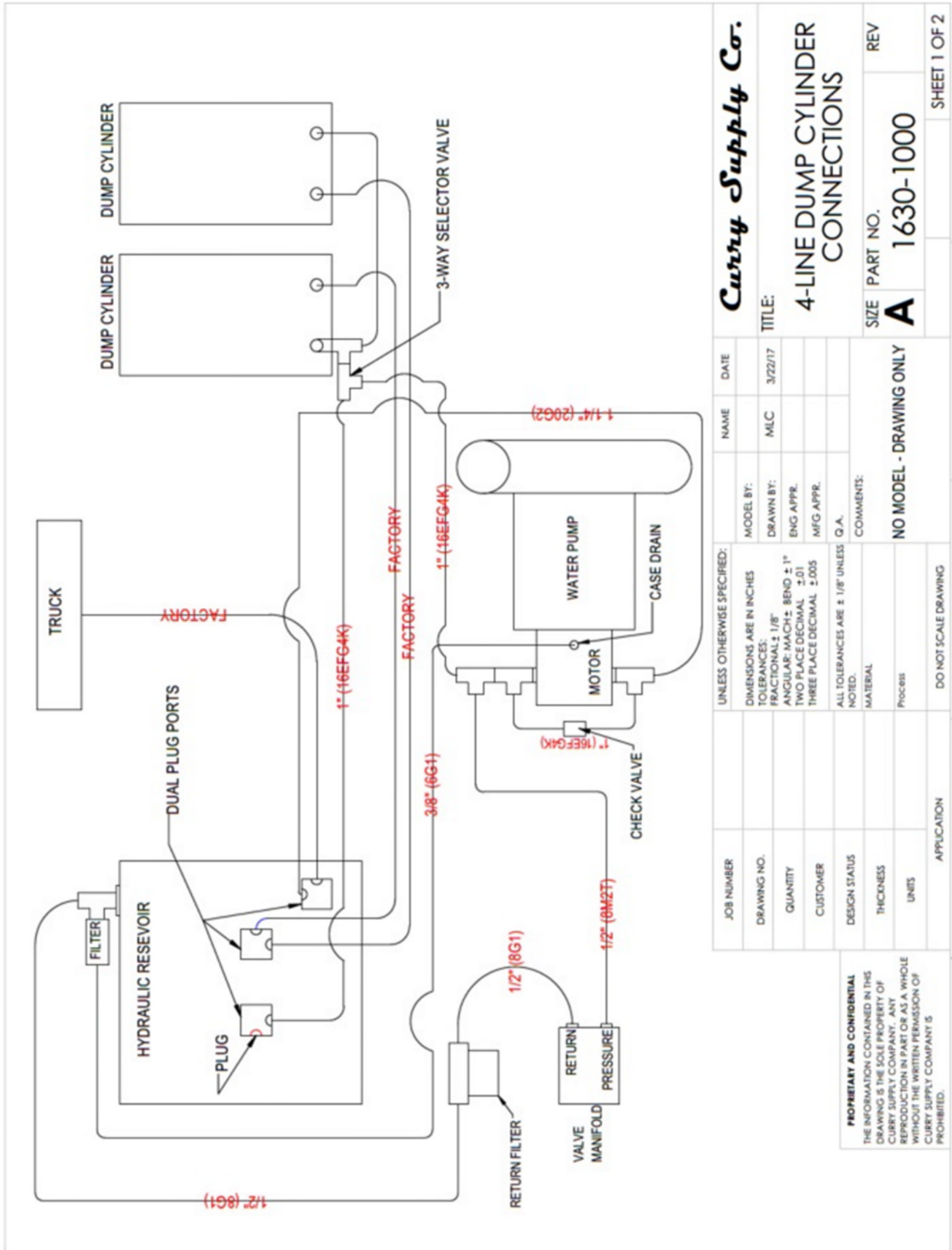
| | | |
|--|--------------------|--------------|
| TITLE: ARTIC 2 SIDES 3 REAR W/ LEVEL SENSOR | DATE: 5/24/2023 | REV 2 |
| DRAWING NO: 2187-1025 | | |
| SCALE: NTS | DRAWN BY: JS | SHEET 2 OF 4 |





| | | | | | |
|----------------------------------|--|--|------|--------------------------|---------|
| Curry Supply Co. | | NAME | DATE | MODEL BY: | 3/22/17 |
| TITLE: | | MLC | | DRAWN BY: | |
| 2-LINE DUMP CYLINDER CONNECTIONS | | | | ENG APPR. | |
| SIZE PART NO. | | | | MFG APPR. | |
| A 1630-1100 | | | | Q.A. | |
| REV | | COMMENTS: | | NO MODEL - DRAWING ONLY | |
| SHEET 2 OF 2 | | DO NOT SCALE DRAWING | | APPLICATION | |
| UNLESS OTHERWISE SPECIFIED: | | DIMENSIONS ARE IN INCHES | | FRACTIONAL: 1/8" | |
| TOLERANCES: | | ANGULAR: MACH ± 1° | | TWO PLACE DECIMAL ± 0.01 | |
| THREE PLACE DECIMAL ± 0.005 | | ALL TOLERANCES ARE ± 1/8" UNLESS NOTED. | | MATERIAL | |
| PROCESS | | THICKNESS | | UNITS | |
| PROPRIETARY AND CONFIDENTIAL | | THE INFORMATION CONTAINED IN THIS DRAWING IS THE SOLE PROPERTY OF CURRY SUPPLY COMPANY. ANY REPRODUCTION IN PART OR AS A WHOLE WITHOUT THE WRITTEN PERMISSION OF CURRY SUPPLY COMPANY IS PROHIBITED. | | | |





Curry Supply Co.

TITLE:
4-LINE DUMP CYLINDER CONNECTIONS

SIZE PART NO. **A 1630-1000** REV

| NAME | DATE | MODEL BY: | DATE |
|------|---------|-----------|------|
| MLC | 3/22/17 | | |

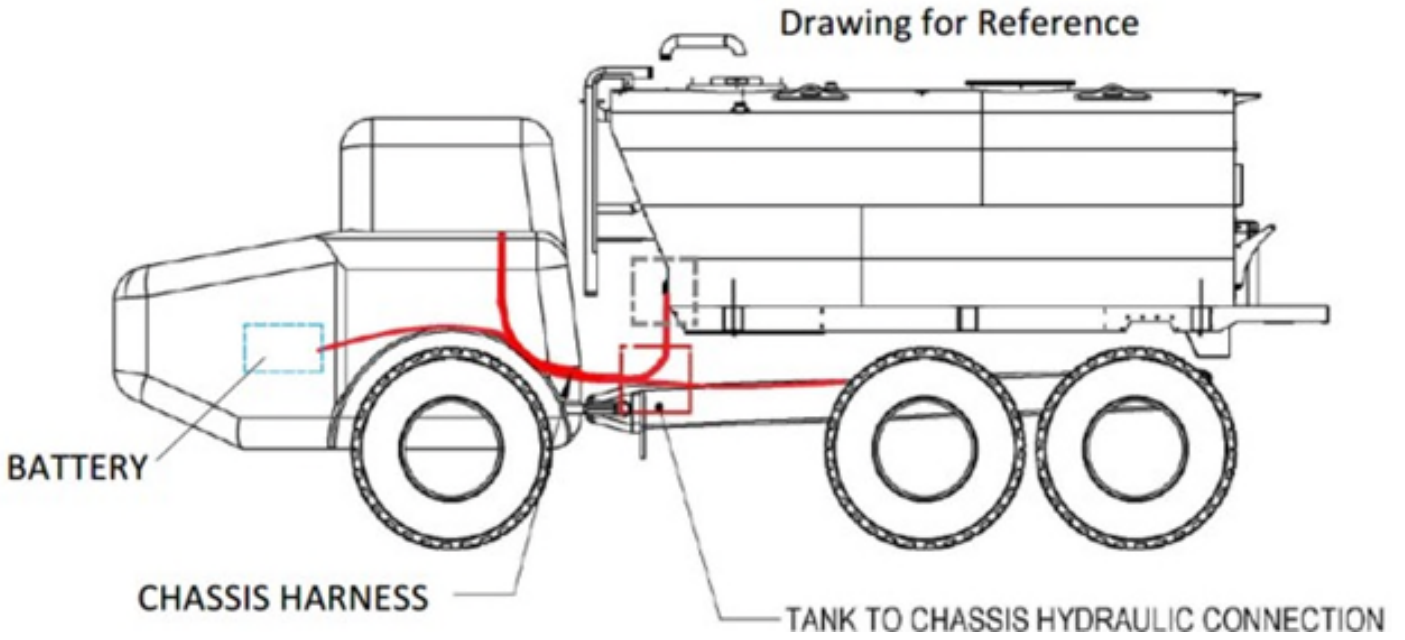
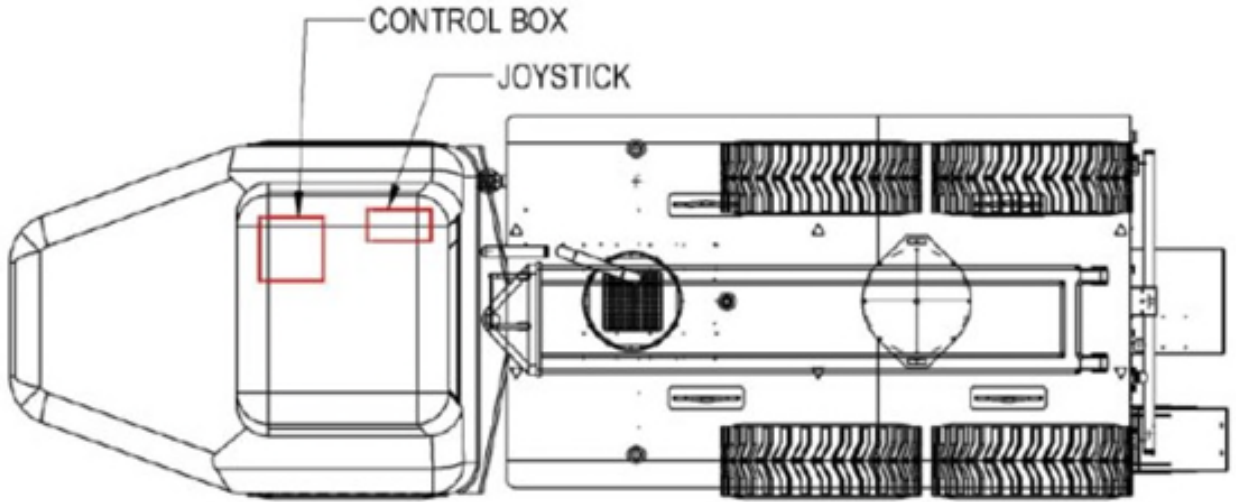
UNLESS OTHERWISE SPECIFIED:
 DIMENSIONS ARE IN INCHES
 TOLERANCES:
 FRACTIONAL: ± 1/8"
 ANGULAR: MACH: ± 1°
 TWO PLACE DECIMAL ± 0.01
 THREE PLACE DECIMAL ± 0.005
 ALL TOLERANCES ARE ± 1/8" UNLESS NOTED.
 MATERIAL
 Process

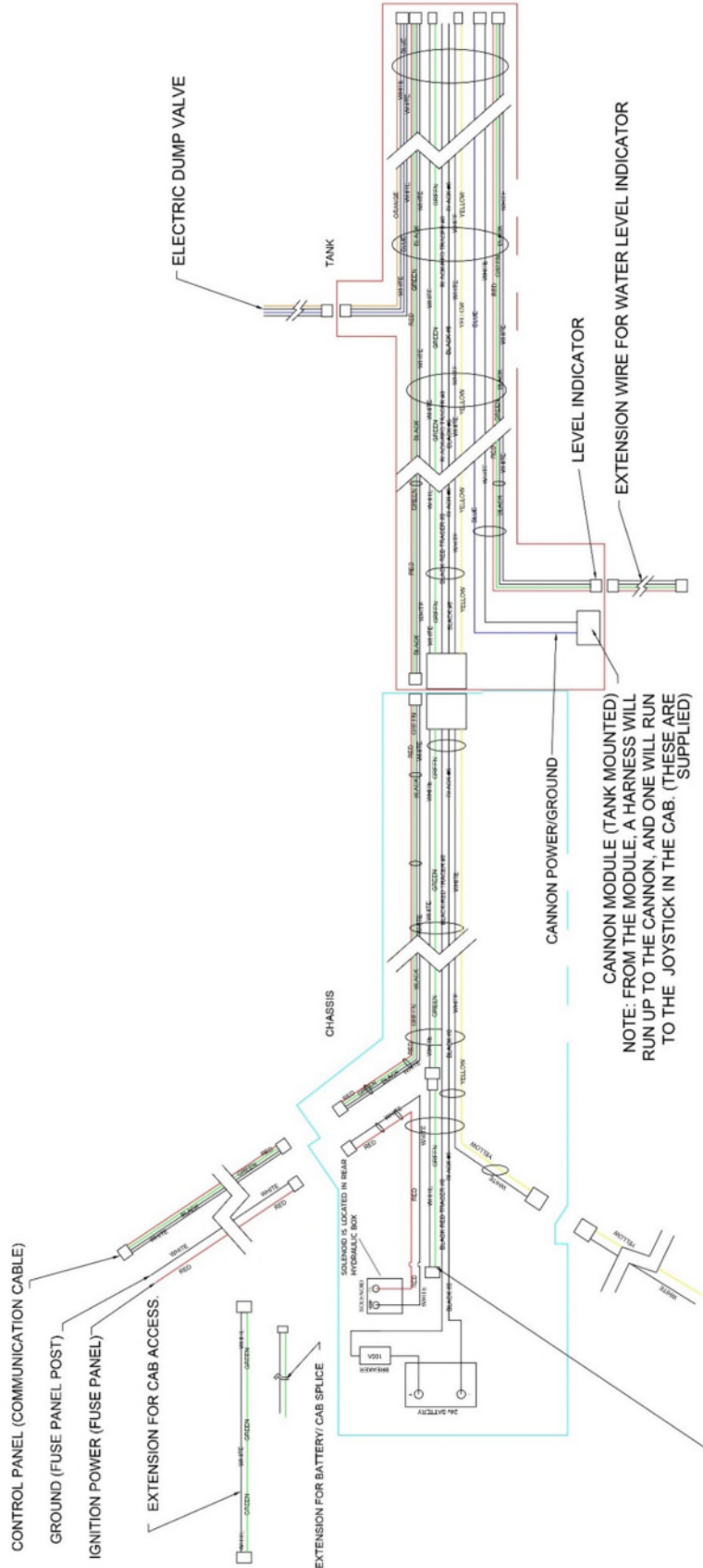
| JOB NUMBER | DESIGN STATUS | APPLICATION |
|------------|---------------|-------------|
| | | |

PROPRIETARY AND CONFIDENTIAL
 THE INFORMATION CONTAINED IN THIS DRAWING IS THE SOLE PROPERTY OF CURRY SUPPLY COMPANY. ANY REPRODUCTION IN PART OR AS A WHOLE WITHOUT THE WRITTEN PERMISSION OF CURRY SUPPLY COMPANY IS PROHIBITED.

DO NOT SCALE DRAWING

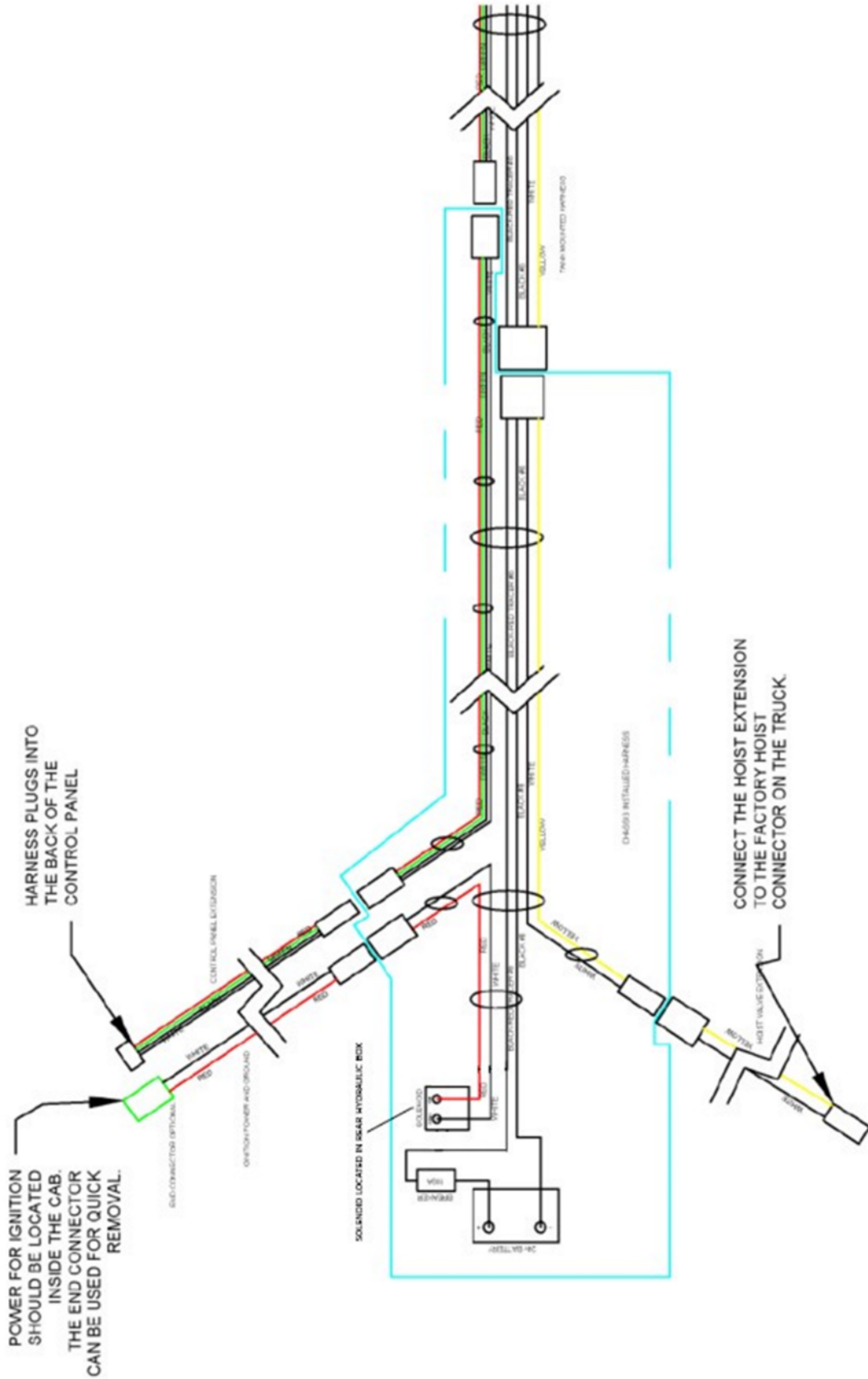


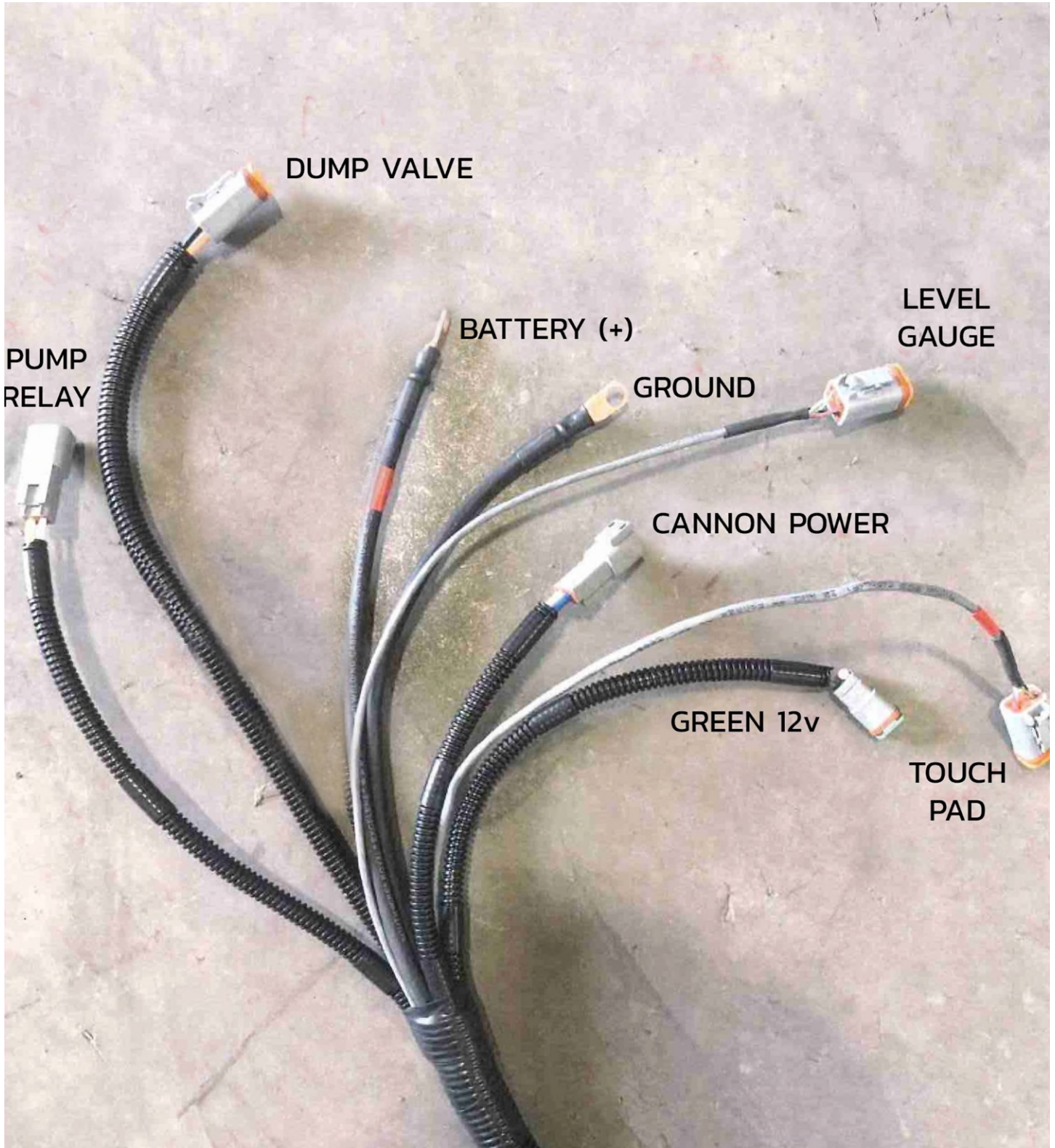


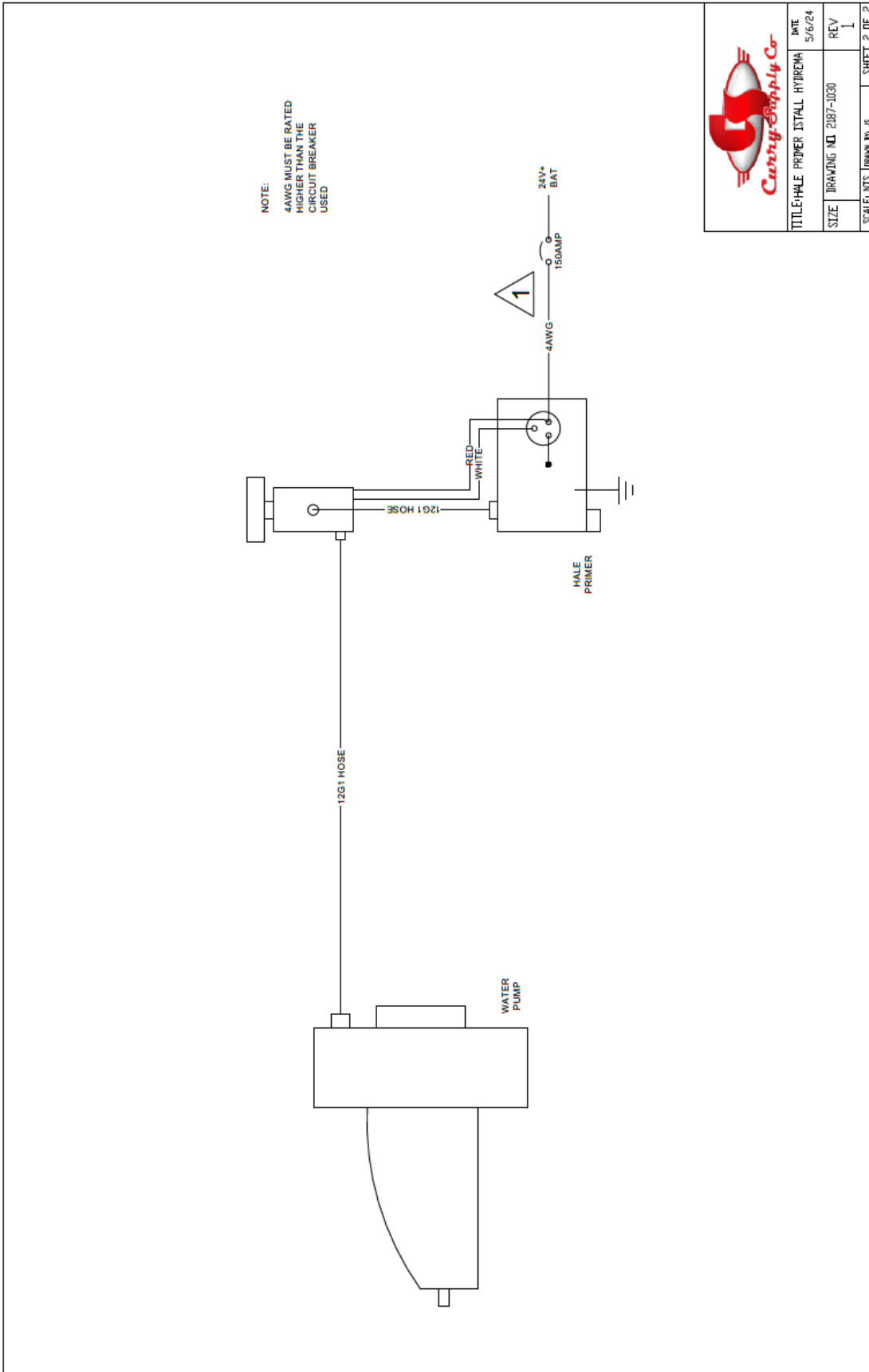


NOTE:
 GREEN/WHITE WIRE IS PRIMARILY USED FOR VOLVO 12V POWER TO HOIST. POWER IS PULLED FROM 12V SIDE OF BATTERIES OR (USING THE EXTENSION) THE CAB. ON ADDITIONAL MODELS, WIRES MAY BE USED FOR STANDARD INSTALLS REQUIRING GENERAL POWER (WIRE SPEC. 14GA)





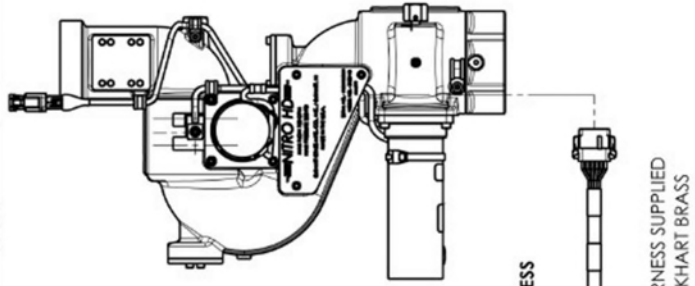




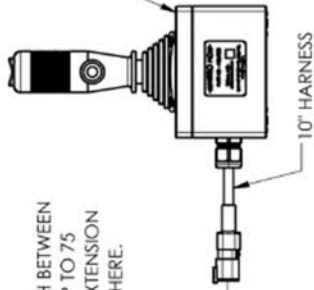
| | |
|------------------------------------|--------------|
| TITLE: HALE PRIMER INSTALL HYDRAHA | DATE: 5/6/24 |
| SIZE: DRAWING NO. 2387-1030 | REV: 1 |
| SCALE: NTS | DRAWN BY: JS |
| SHEET 2 OF 2 | |



| REV. | ZONE | DESCRIPTION | BY | ECN NUMBER |
|------|--------|---|-----|------------|
| 8 | C7, C8 | ADDED NOTES ABOUT EXTENSION HARNESS 37527000 BEING USED BETWEEN THE JOYSTICK AND MODULE | KAP | 170512 |

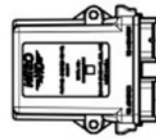


NITRO HD JOYSTICK
P/N 41067000

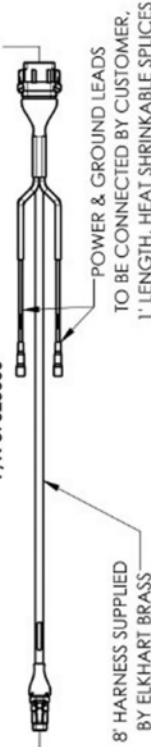


OPTIONAL: EXTEND LENGTH BETWEEN MODULE AND JOYSTICK UP TO 75 FEET BY ADDING UP TO 5 EXTENSION HARNESSES, P/N 37527000 HERE.

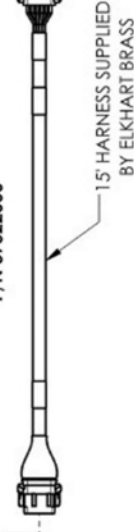
NITRO HD MODULE
P/N 81824001



MODULE TO JOYSTICK HARNESS
P/N 37523000

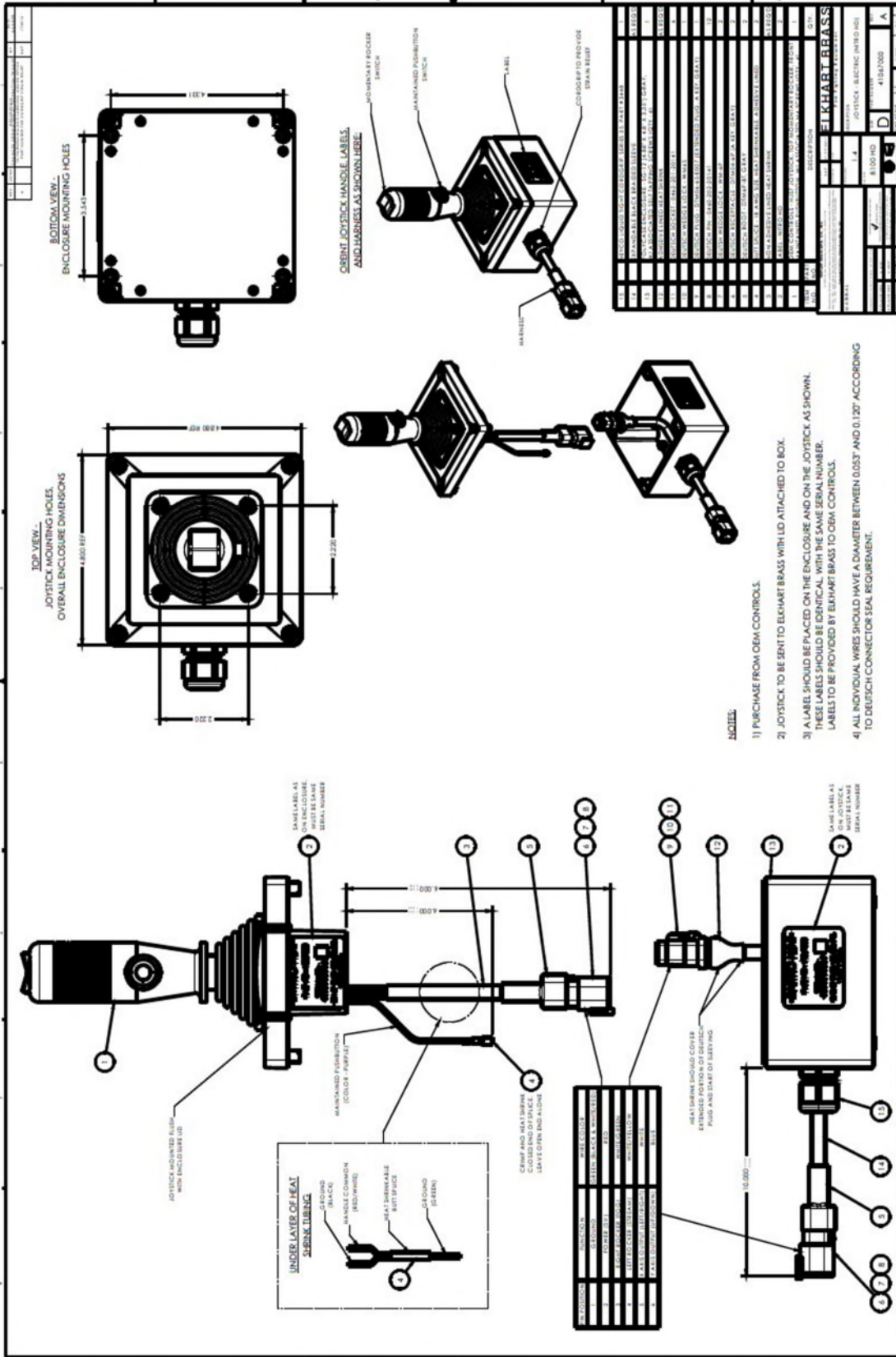


MODULE TO MONITOR HARNESS
P/N 37522000



NITRO HD LAYOUT DRAWING, KIT #1

| | | | |
|---|--------|--|------------|
| ELKHART BRASS Fire Fighting Equipment | | DATE | 12/01/2016 |
| DESIGNED BY | KAP | CHECKED BY | |
| REVISION | | REVISION | |
| MATERIAL: N/A | | WEIGHT (LBS) | 13.3 |
| UNLESS OTHERWISE SPECIFIED, DIMENSIONS ARE IN INCHES. DO NOT SCALE PRINT. | | ASSEMBLY | |
| 1 PLACE DEC. | ±.1/2" | DIM. ANGLE INDICATION | |
| 2 PLACE DEC. | REF | INTERPRET DIMENSIONS AND TOLERANCES PER ASME Y14.5M 1994 | |
| ANGLES | ± 1° | CAD MODEL: 8100 HD | |
| DESCRIPTION: NITRO HD (KIT #1) | | SIZE | 8100 HD |
| NITRO HD (KIT #1) | | CAD SCALE | 1:1 |
| SHEET 1 OF 1 | | REV. B | |



ELKHART BRASS

FIRE FIGHTING EQUIPMENT A SAFE FLEET BRAND

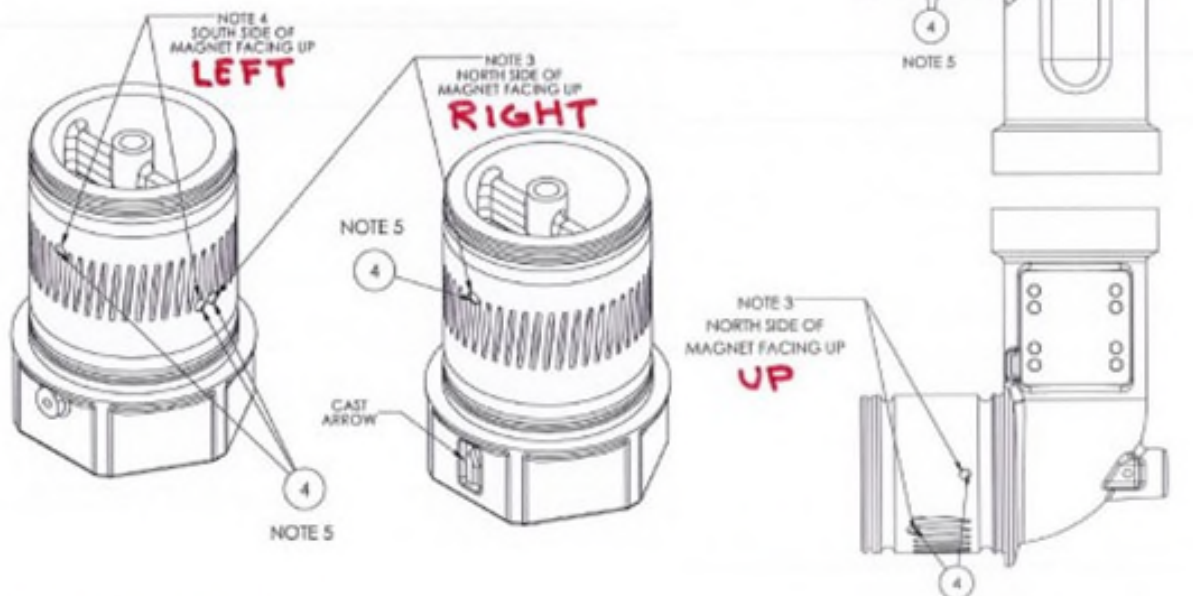
8100HD (Nitro HD) position sensor testing information

The position sensor used for controlling Vertical and Horizontal travel on the 8100HD (Nitro HD) is p/n 67566000.

- The sensors RED wire should have +5 volts on it.
- The sensors BLACK wire should be GROUND.
- The sensors GREEN wire should have;
 - Around +2.5v when no magnet is detected.
 - It should drop below +2.5 volts (around +1.5v) when detecting the North Pole of a magnet (RIGHT or UP).
 - It should go above +2.5 volts (around +3.5v) when detecting the South Pole of a magnet (LEFT or DOWN).

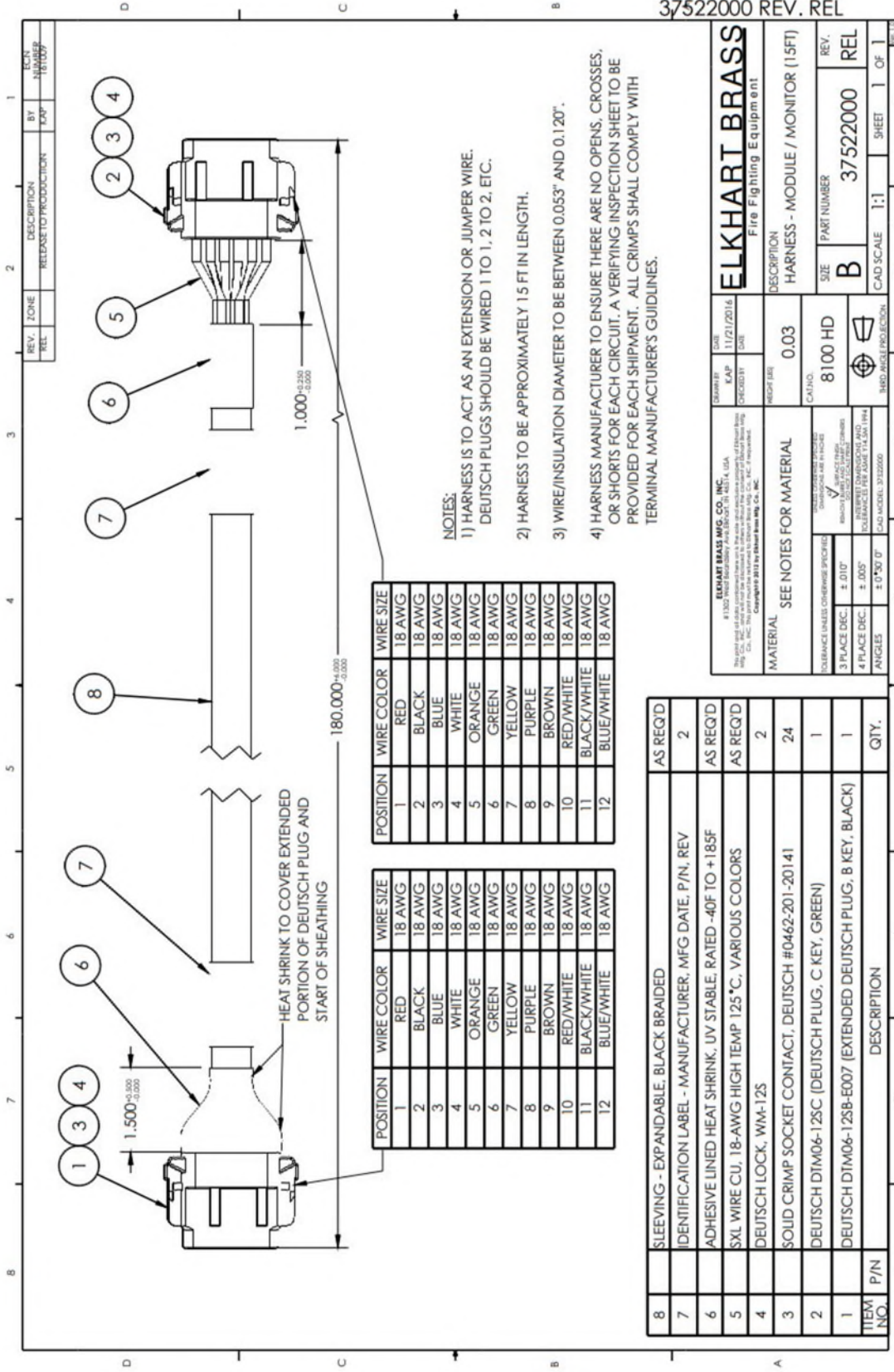
The magnets used on the 8100HD (Nitro HD) are p/n 46057000 and are positioned as follows.

- North Pole facing out for RIGHT and UP limits.
- South Pole facing out for LEFT and DOWN limits.



Last Revised 01/23/23

Elkhart Brass Mfg. Co., Inc. 1302 W. Beardsley Avenue • Elkhart, Indiana 46514 • 1-574-295-8330 • 1-800-346-0250
www.elkhartbrass.com



NOTES:
 1) HARNESS IS TO ACT AS AN EXTENSION OR JUMPER WIRE. DEUTSCH PLUGS SHOULD BE WIRED 1 TO 1, 2 TO 2, ETC.
 2) HARNESS TO BE APPROXIMATELY 15 FT IN LENGTH.
 3) WIRE/INSULATION DIAMETER TO BE BETWEEN 0.053" AND 0.120".
 4) HARNESS MANUFACTURER TO ENSURE THERE ARE NO OPENS, CROSSES, OR SHORTS FOR EACH CIRCUIT. A VERIFYING INSPECTION SHEET TO BE PROVIDED FOR EACH SHIPMENT. ALL CRIMPS SHALL COMPLY WITH TERMINAL MANUFACTURER'S GUIDELINES.

| POSITION | WIRE COLOR | WIRE SIZE |
|----------|-------------|-----------|
| 1 | RED | 18 AWG |
| 2 | BLACK | 18 AWG |
| 3 | BLUE | 18 AWG |
| 4 | WHITE | 18 AWG |
| 5 | ORANGE | 18 AWG |
| 6 | GREEN | 18 AWG |
| 7 | YELLOW | 18 AWG |
| 8 | PURPLE | 18 AWG |
| 9 | BROWN | 18 AWG |
| 10 | RED/WHITE | 18 AWG |
| 11 | BLACK/WHITE | 18 AWG |
| 12 | BLUE/WHITE | 18 AWG |

| POSITION | WIRE COLOR | WIRE SIZE |
|----------|-------------|-----------|
| 1 | RED | 18 AWG |
| 2 | BLACK | 18 AWG |
| 3 | BLUE | 18 AWG |
| 4 | WHITE | 18 AWG |
| 5 | ORANGE | 18 AWG |
| 6 | GREEN | 18 AWG |
| 7 | YELLOW | 18 AWG |
| 8 | PURPLE | 18 AWG |
| 9 | BROWN | 18 AWG |
| 10 | RED/WHITE | 18 AWG |
| 11 | BLACK/WHITE | 18 AWG |
| 12 | BLUE/WHITE | 18 AWG |

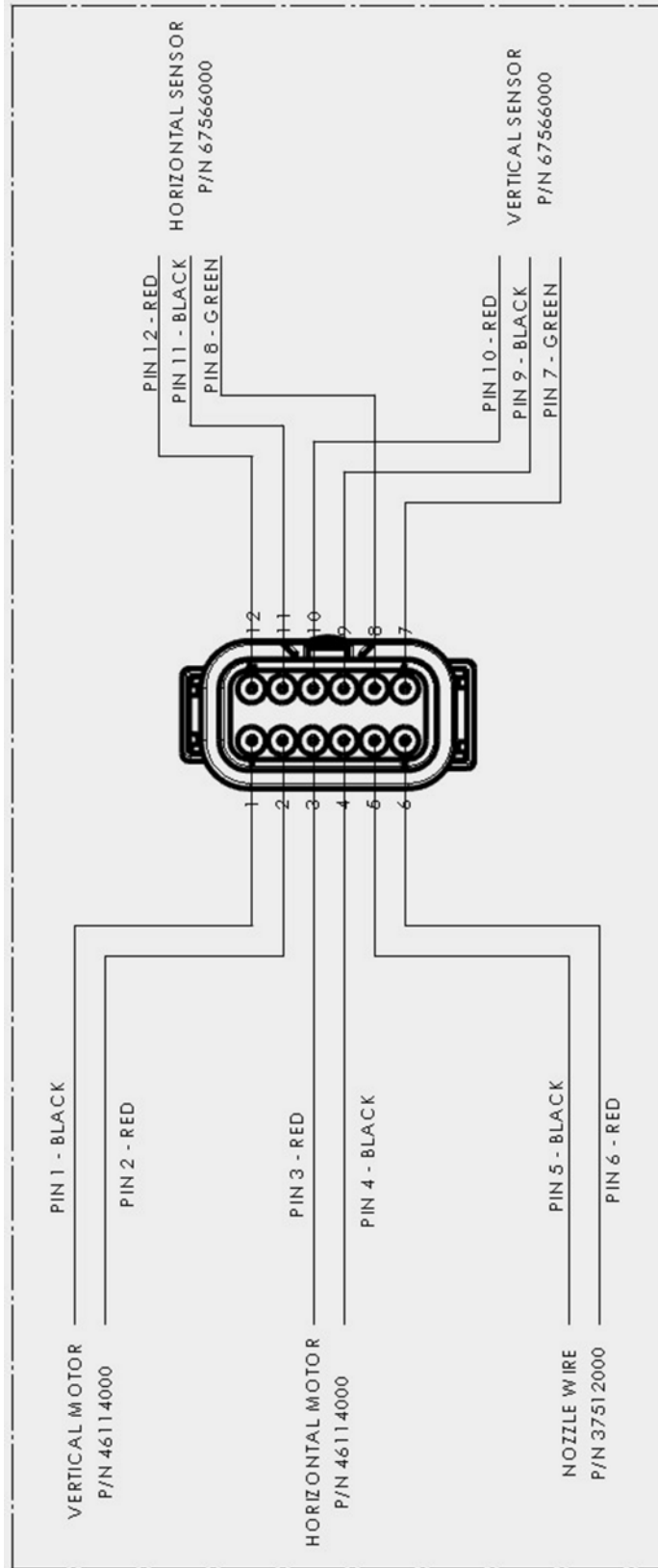
HEAT SHRINK TO COVER EXTENDED PORTION OF DEUTSCH PLUG AND START OF SHEATHING

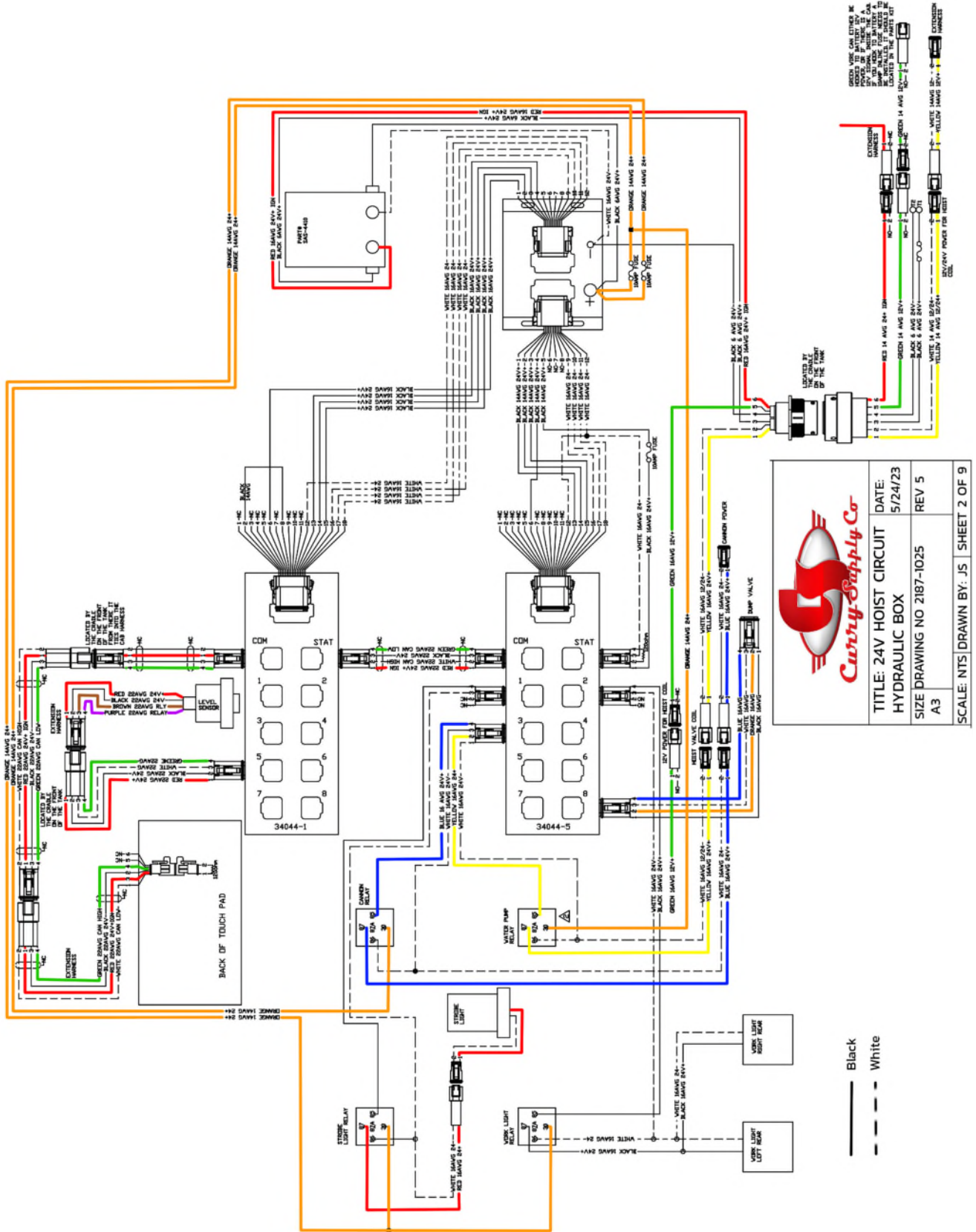
37522000 REV. REL

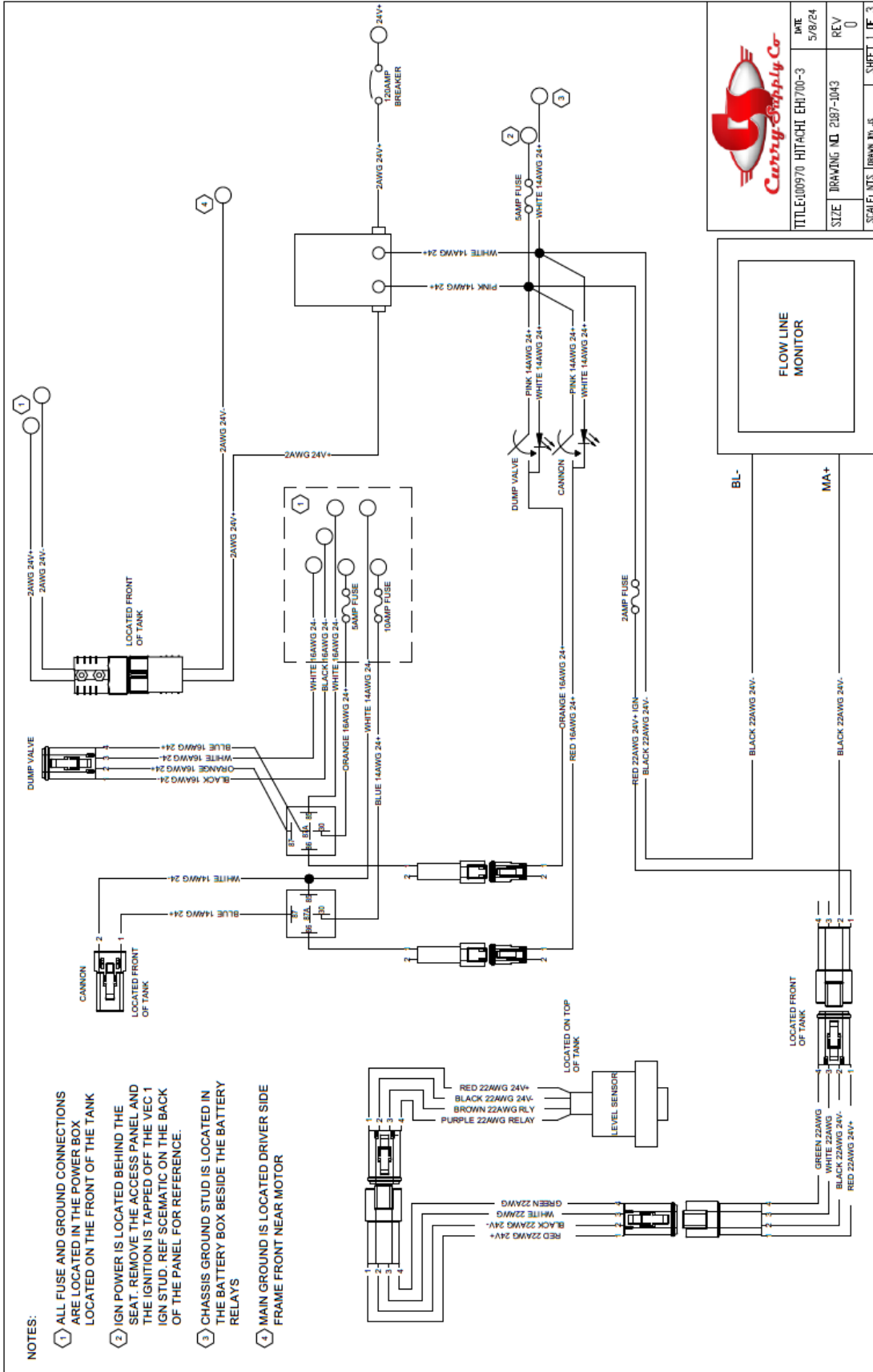
| | |
|---|-----------------------|
| ELKHART BRASS Fire Fighting Equipment | |
| DATE: 11/21/2016 | REV: REL |
| DESCRIPTION: HARNESS - MODULE / MONITOR (15FT) | PART NUMBER: 37522000 |
| SIZE: 0.03 | SIZE: B |
| WEIGHT: 8100 HD | CAD SCALE: 1:1 |
| CAD FILE: 8100 HD | SHEET 1 OF 1 |
| MATERIAL: SEE NOTES FOR MATERIAL | |
| TOLERANCES UNLESS OTHERWISE SPECIFIED | |
| 3 PLACE DEC. ± .010" | 4 PLACE DEC. ± .005" |
| ANGLES: ± 0°30' 0" | |

| ITEM NO. | P/N | DESCRIPTION | QTY. |
|----------|-----|---|----------|
| 8 | | SLEEVING - EXPANDABLE, BLACK BRAIDED | AS REQ'D |
| 7 | | IDENTIFICATION LABEL - MANUFACTURER, MFG DATE, P/N, REV | 2 |
| 6 | | ADHESIVE LINED HEAT SHRINK, UV STABLE, RATED -40F TO +185F | AS REQ'D |
| 5 | | SXL WIRE CU, 18-AWG HIGH TEMP 125°C, VARIOUS COLORS | AS REQ'D |
| 4 | | DEUTSCH LOCK, WM-12S | 2 |
| 3 | | SOLID CRIMP SOCKET CONTACT, DEUTSCH #0462-201-20141 | 24 |
| 2 | | DEUTSCH DTM06-125C (DEUTSCH PLUG, C KEY, GREEN) | 1 |
| 1 | | DEUTSCH DTM06-125B-E007 (EXTENDED DEUTSCH PLUG, B KEY, BLACK) | 1 |









NOTES:

- ① ALL FUSE AND GROUND CONNECTIONS ARE LOCATED IN THE POWER BOX LOCATED ON THE FRONT OF THE TANK
- ② IGN POWER IS LOCATED BEHIND THE SEAT. REMOVE THE ACCESS PANEL AND THE IGNITION IS TAPPED OFF THE VEC 1 IGN STUD. REF SCHEMATIC ON THE BACK OF THE PANEL FOR REFERENCE.
- ③ CHASSIS GROUND STUD IS LOCATED IN THE BATTERY BOX BESIDE THE BATTERY RELAYS
- ④ MAIN GROUND IS LOCATED DRIVER SIDE FRAME FRONT NEAR MOTOR

Curry Supply Co

| | |
|-------------------------------|----------------|
| TITLE:00970 HITACHI EH700-3 | DATE 5/8/24 |
| SIZE DRAWING NO: 2187-1043 | REV 0 |
| SCALE: NTS | DRAWN BY: JS |
| SHEET 1 OF 3 | |



800.345.2829

www.CurrySupply.com



