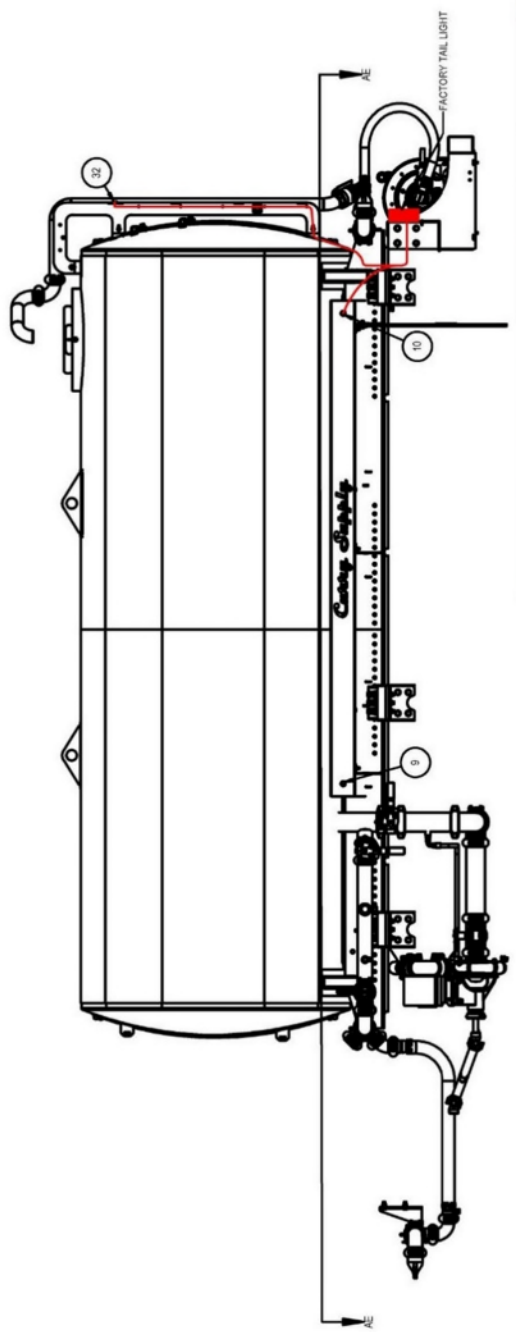
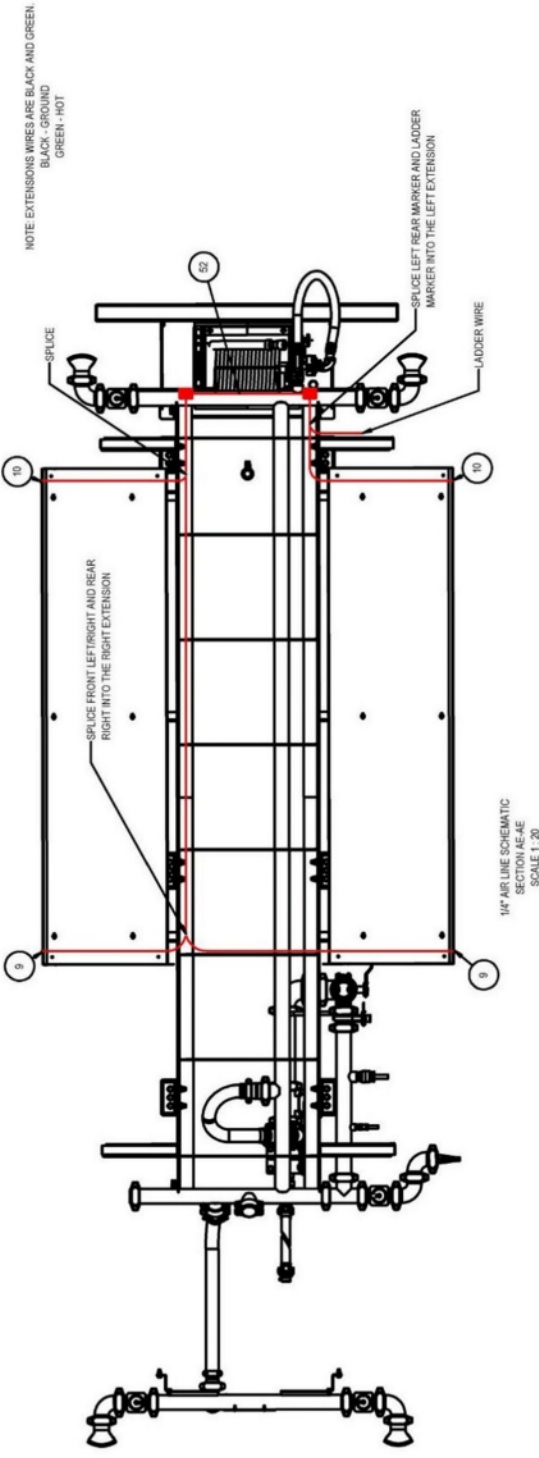


Water Trucks On Road Remote Engine Drive Schematics

Water Tank 4k Gal Gen IV – Electric Diagram SCH1-1	Page 2
Water Tank 4k Gal Gen IV – Airline Diagram SCH2-1	Page 3
Water Truck Harness/Wiring Diagram SCH3-1	Page 4
Water Truck Harness/Wiring Diagram SCH4-1	Page 5
Ford F650 & F750 Wire Harness Schematic SCH5-1	Page 6
HATZ 3H50T Remote Engine Sensor Locations SCH6-1	Page 7
HATZ 3H50T Remote Engine Sensor Locations SCH7-1	Page 8
HATZ 3H50T Remote Engine Sensor Locations SCH8-1	Page 9
HATZ 3H50T Remote Engine Actuator Locations SCH9-1	Page 10
HATZ 3H50T Remote Engine Wiring Diagram SCH10-1	Page 11
Elkhart Nitro Joystick Electric SCH11-1	Page 12
Elkhart Nitro Position Sensor SCH11-2	Page 13
Elkhart Nitro Monitor Harness SCH11-3	Page 14
Elkhart Nitro Connector Pin Diagram SCH11-4	Page 15

CAUTION

PLEASE CONTACT CURRY SUPPLY COMPANY BEFORE ATTEMPTING ANY CHANGES TO THE ELECTRICAL SYSTEMS. DOING SO MAY CAUSE EQUIPMENT DAMAGE OR VOID WARRANTY.



Curry Supply Co.

NAME	DATE
MODEL BY: MLC	09/17/19
DRAWN BY: MLC	09/17/19
ENG APPR:	
MFG APPR:	
D.A.:	
COMMENTS:	

CONTROLLED DOCUMENT

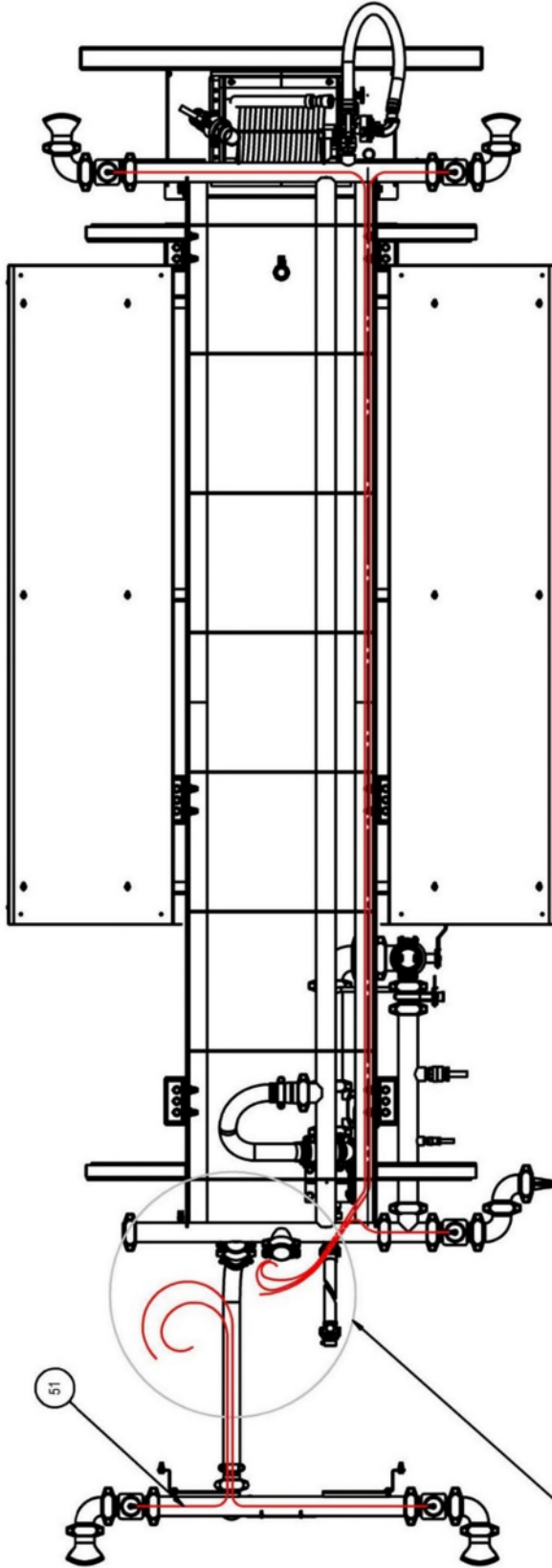
PROPRIETARY AND CONFIDENTIAL
THE INFORMATION CONTAINED IN THIS DRAWING IS THE SOLE PROPERTY OF CURRY SUPPLY COMPANY. IT IS TO BE USED ONLY IN PART OR AS A WHOLE WITHOUT THE WRITTEN PERMISSION OF CURRY SUPPLY COMPANY IS PROHIBITED.

TITLE: WATER TANK, 4,000 GAL.
GEN IV - ELECTRIC DIAGRAM

SIZE | PART NO. | REV

C | 1815-1000 | 0

SHEET 3 OF 5



1/4\"/>

RUN LINES THROUGH THE BOTTOM OF THE CAB INTO THE CONTROL SWITCHES.
 NOTE: DIFFERENT CHASSIS MODELS MAY HAVE DIFFERENT SWITCH LOCATIONS.
 ENTER THE CAB AT THE BEST LOCATION FOR THE SWITCH LAYOUT THAT DOES
 NOT REQUIRE ANY SPLICING.

MODEL BY:	NAME	DATE
DRAWN BY:	MLC	09/17/19
ENG. APPR.	MLC	09/17/19
MFG. APPR.		
Q.A.		
COMMENTS:		



TITLE: WATER TANK, 4,000 GAL.
 GEN IV - AIR LINE DIAGRAM

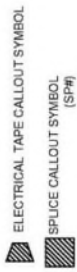
SIZE	PART NO.	REV
B	1815-1000	0

SHEET 2 OF 5

PROPRIETARY AND CONFIDENTIAL

THE INFORMATION CONTAINED IN THIS DRAWING IS THE SOLE PROPERTY OF CURRY SUPPLY COMPANY. ANY REPRODUCTION IN PART OR AS A WHOLE WITHOUT THE WRITTEN PERMISSION OF CURRY SUPPLY COMPANY IS PROHIBITED.

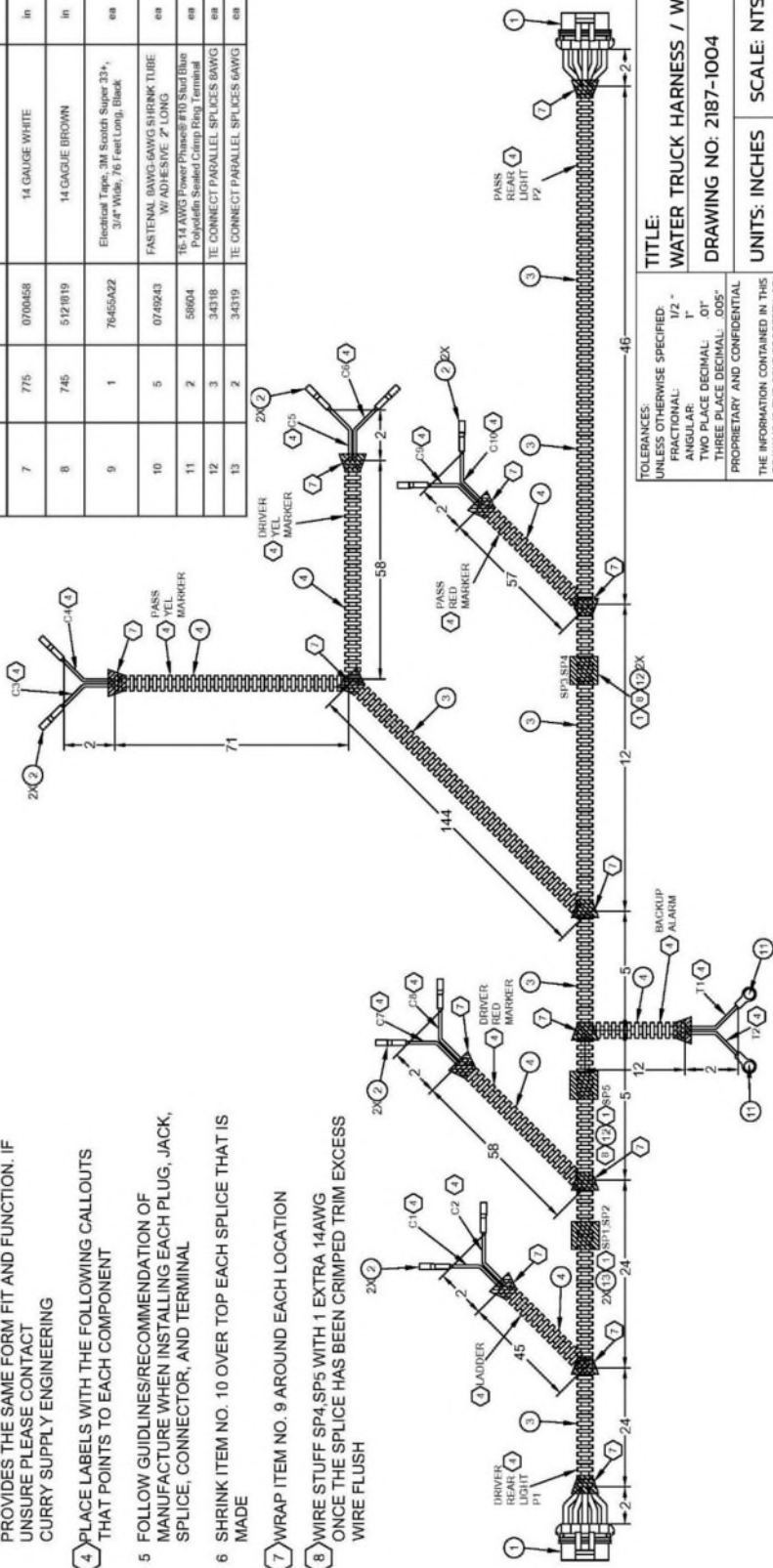
Item No.	QTY.	Part No.	Stock Desc.	Units
1	2	ADO-PT1927	Connector 5-way 5 pin for Chevrolet Tail Light GM	ea
2	10	0747509	.157", 16-14 AWG, FEMALE BULLET CONNECTOR	ea
3	265	0708152	3/8" POLYETHYLENE SLIT WIRE LOOM	in
4	310	0708151	1/4" POLYETHYLENE SLIT WIRE LOOM	in
5	140	0700457	14 GAUGE RED	in
6	125	0710096	14 GAUGE GREEN	in
7	775	0700458	14 GAUGE WHITE	in
8	745	5121819	14 GAUGE BROWN	in
9	1	76455422	Electrical Tape, 3M Scotch Super 33+, 3/4" Wide, 76 Feet Long, Black	ea
10	5	0749243	FASTENAL 6AWG-6AWG SHRINK TUBE W/ ADHESIVE 2' LONG	ea
11	2	58904	16-14 AWG PowerPhase® FTD Stud Blue Polyolefin Sealed Clamp Ring Terminal	ea
12	3	34318	TE CONNECT PARALLEL SPLICES 6AWG	ea
13	2	34319	TE CONNECT PARALLEL SPLICES 6AWG	ea



NOTES:
 REFERENCE DOCUMENT:
 -BUILD CABLE HARNESS IN ACCORDANCE WITH IPC-620

- 1 SPlicing WIRES SHALL BE DONE AN 1-1/2 BEFORE BREAKING OUT THE HARNESS
2. ITEM NO. 5-10,12,13 NOT SHOWN IN ASSEMBLY
3. ALTERNATE PART NO. ARE ALLOWED AS LONG AS THE ALTERNATE PART PROVIDES THE SAME FORM FIT AND FUNCTION. IF UNSURE PLEASE CONTACT CURRY SUPPLY ENGINEERING
- 4 PLACE LABELS WITH THE FOLLOWING CALLOUTS THAT POINTS TO EACH COMPONENT
- 5 FOLLOW GUIDELINES/RECOMMENDATION OF MANUFACTURE WHEN INSTALLING EACH PLUG, JACK, SPLICE, CONNECTOR, AND TERMINAL
- 6 SHRINK ITEM NO. 10 OVER TOP EACH SPLICE THAT IS MADE

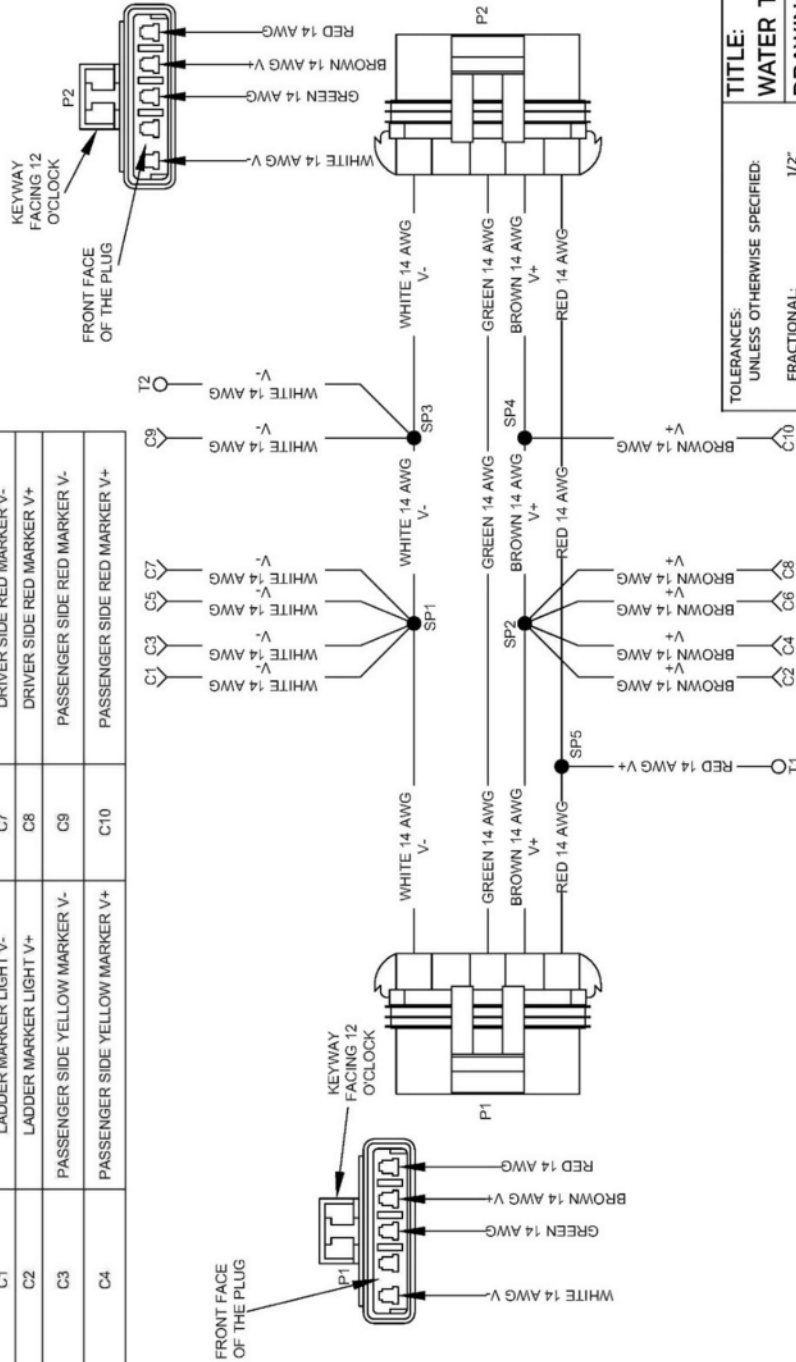
- 7 WRAP ITEM NO. 9 AROUND EACH LOCATION
- 8 WIRE STUFF SP4,SP5 WITH 1 EXTRA 14AWG ONCE THE SPLICE HAS BEEN CRIMPED TRIM EXCESS WIRE FLUSH



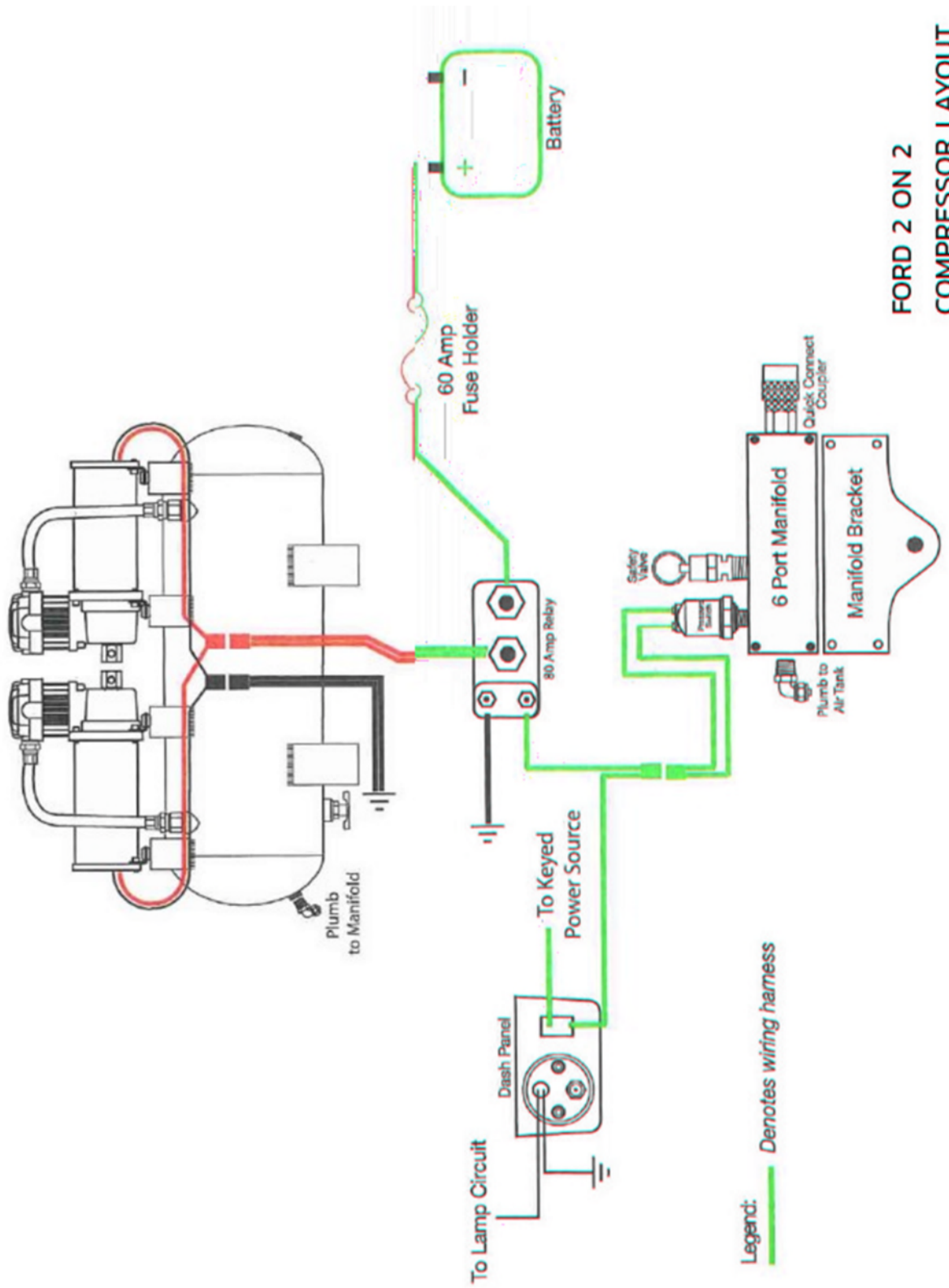
TOLERANCES: UNLESS OTHERWISE SPECIFIED: FRACTIONAL: ANGULAR: TWO PLACE DECIMAL: THREE PLACE DECIMAL: .005" PROPRIETARY AND CONFIDENTIAL	TITLE: WATER TRUCK HARNESS / WD DRAWING NO: 2187-1004 UNITS: INCHES SCALE: NTS MODEL BY: JS 01/24/23 DRAWN BY: JS 01/24/23
---	--

THE INFORMATION CONTAINED IN THIS DRAWING IS THE SOLE PROPERTY OF CURRY SUPPLY CO. ANY REPRODUCTION IN PART OR AS A WHOLE WITHOUT THE WRITTEN PERMISSION OF CURRY SUPPLY CO IS PROHIBITED.

LABEL	DESCRIPTION	LABEL	DESCRIPTION
P1	DRIVER REAR TAIL LIGHT	C5	DRIVER SIDE YELLOW MARKER V-
P2	HARNES TIE IN	C6	DRIVER SIDE YELLOW MARKER V+
C1	LADDER MARKER LIGHT V-	C7	DRIVER SIDE RED MARKER V-
C2	LADDER MARKER LIGHT V+	C8	DRIVER SIDE RED MARKER V+
C3	PASSENGER SIDE YELLOW MARKER V-	C9	PASSENGER SIDE RED MARKER V-
C4	PASSENGER SIDE YELLOW MARKER V+	C10	PASSENGER SIDE RED MARKER V+

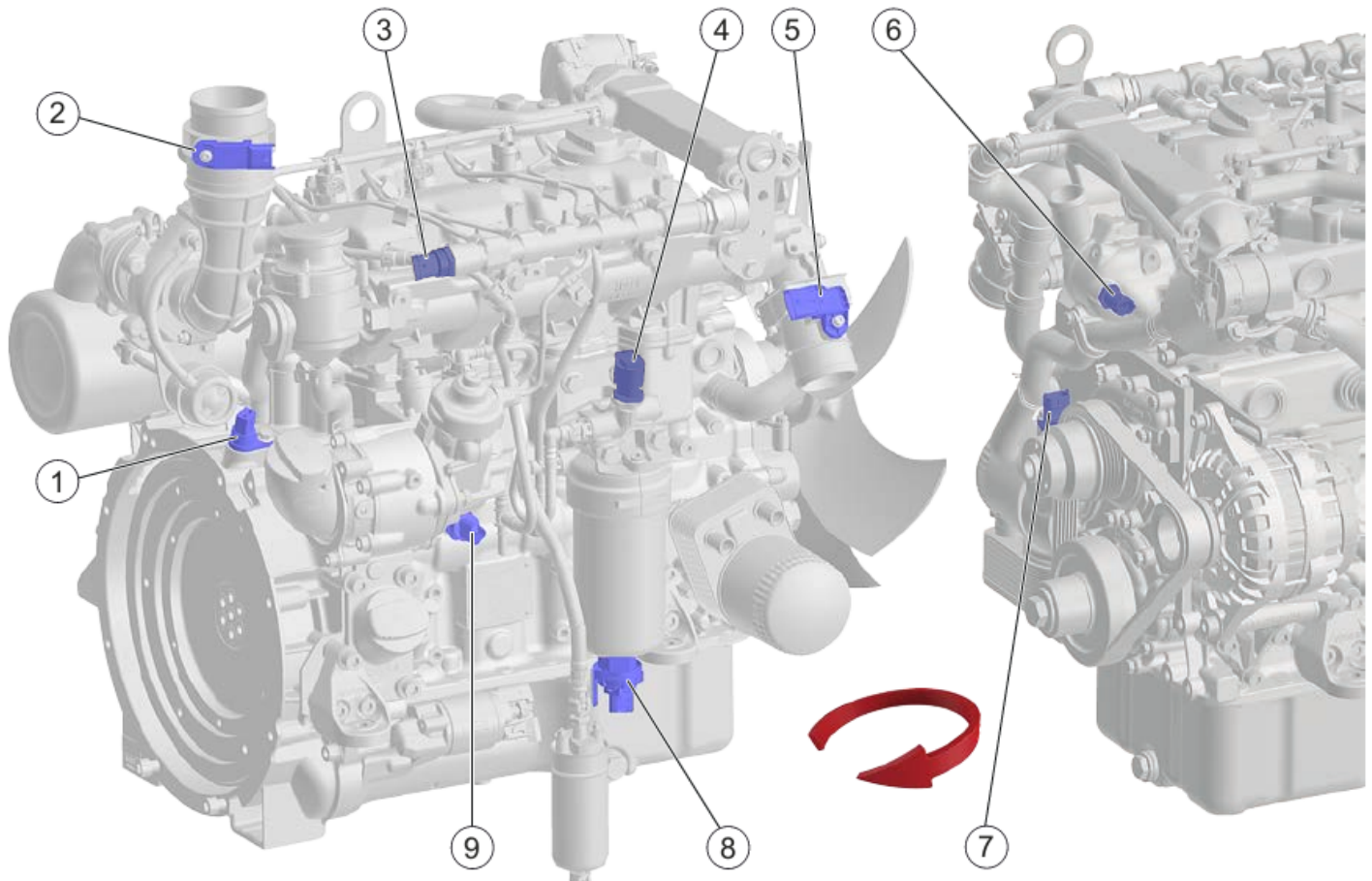


TITLE:		WATER TRUCK HARNESS/WD	
DRAWING NO. 2187-1004		SCALE: NTS	
REV: 0		MODEL BY: JS 01/24/23	
UNITS: INCHES		DRAWN BY: JS 01/24/23	
<p>TOLERANCES: UNLESS OTHERWISE SPECIFIED: FRACTIONAL: 1/2" ANGULAR: 1" TWO PLACE DECIMAL: .01" THREE PLACE DECIMAL: .005"</p> <p>PROPRIETARY AND CONFIDENTIAL THE INFORMATION CONTAINED IN THIS DRAWING IS THE SOLE PROPERTY OF CURRY SUPPLY CO. ANY REPRODUCTION IN PART OF AS A WHOLE WITHOUT THE WRITTEN PERMISSION OF CURRY SUPPLY CO IS PROHIBITED.</p>			



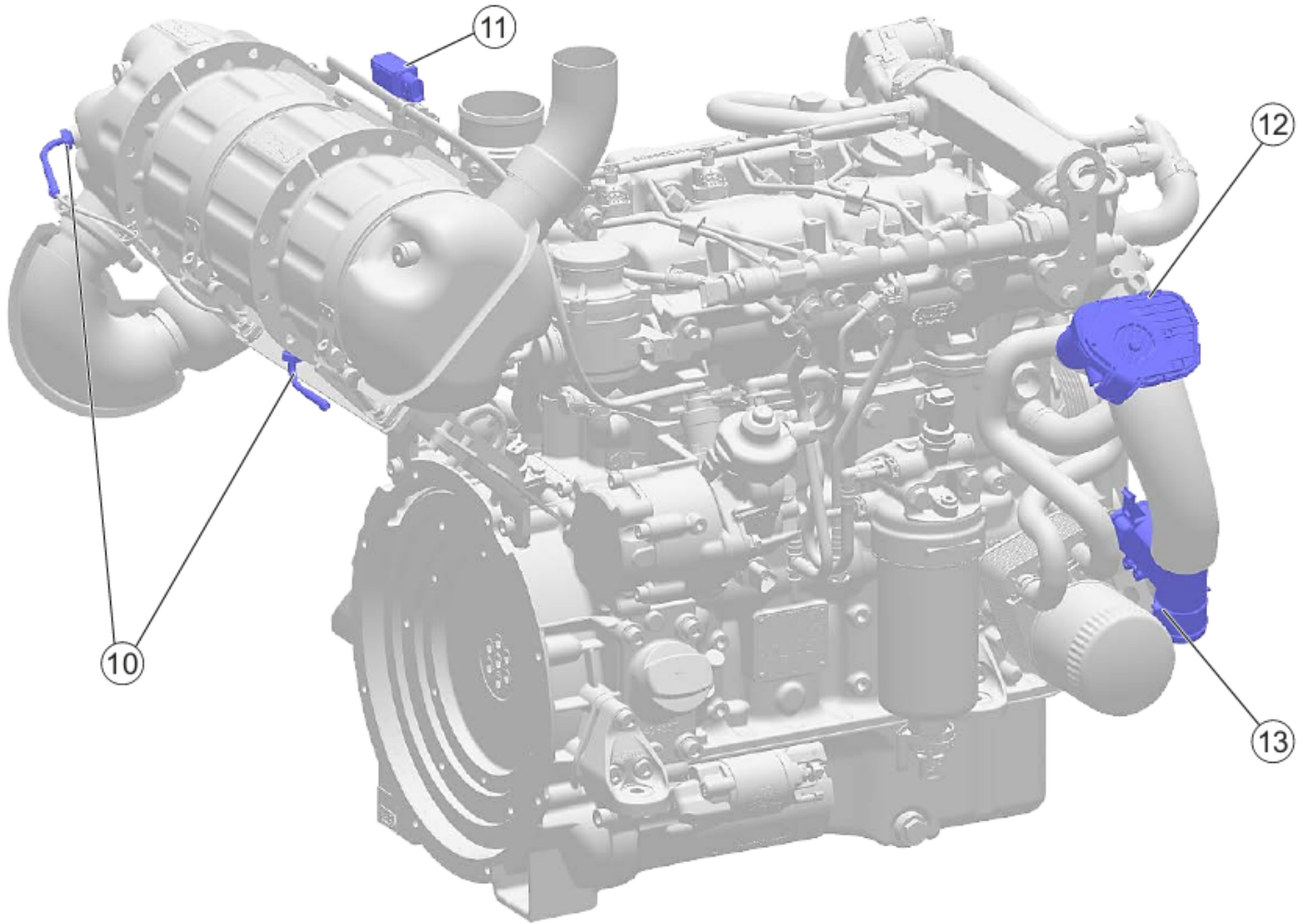
FORD 2 ON 2
COMPRESSOR LAYOUT

HATZ 3H50T Sensor Locations



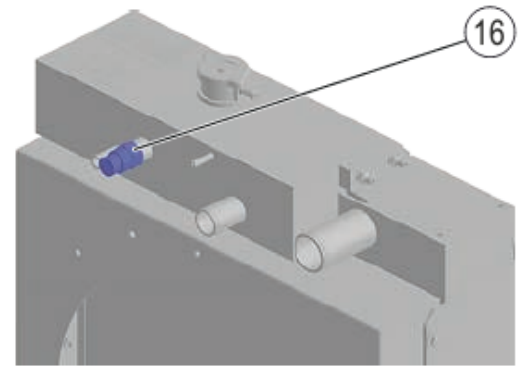
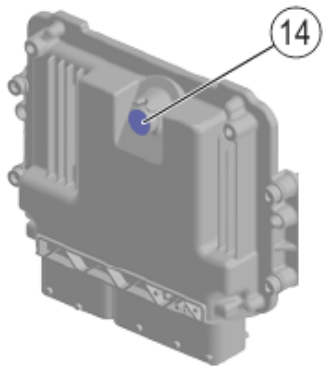
- 1. Crankshaft speed sensor
- 2. Air filter differential pressure sensor
- 3. Rail pressure sensor
- 4. Fuel low pressure and fuel temperature sensor
- 5. Charge air pressure and charge air temperature sensor (T/TI/TIC)
- 6. Coolant temperature sensor
- 7. Camshaft sensor
- 8. Water in fuel sensor
- 9. Oil pressure and oil temperature sensor

HATZ 3H50T Sensor Locations



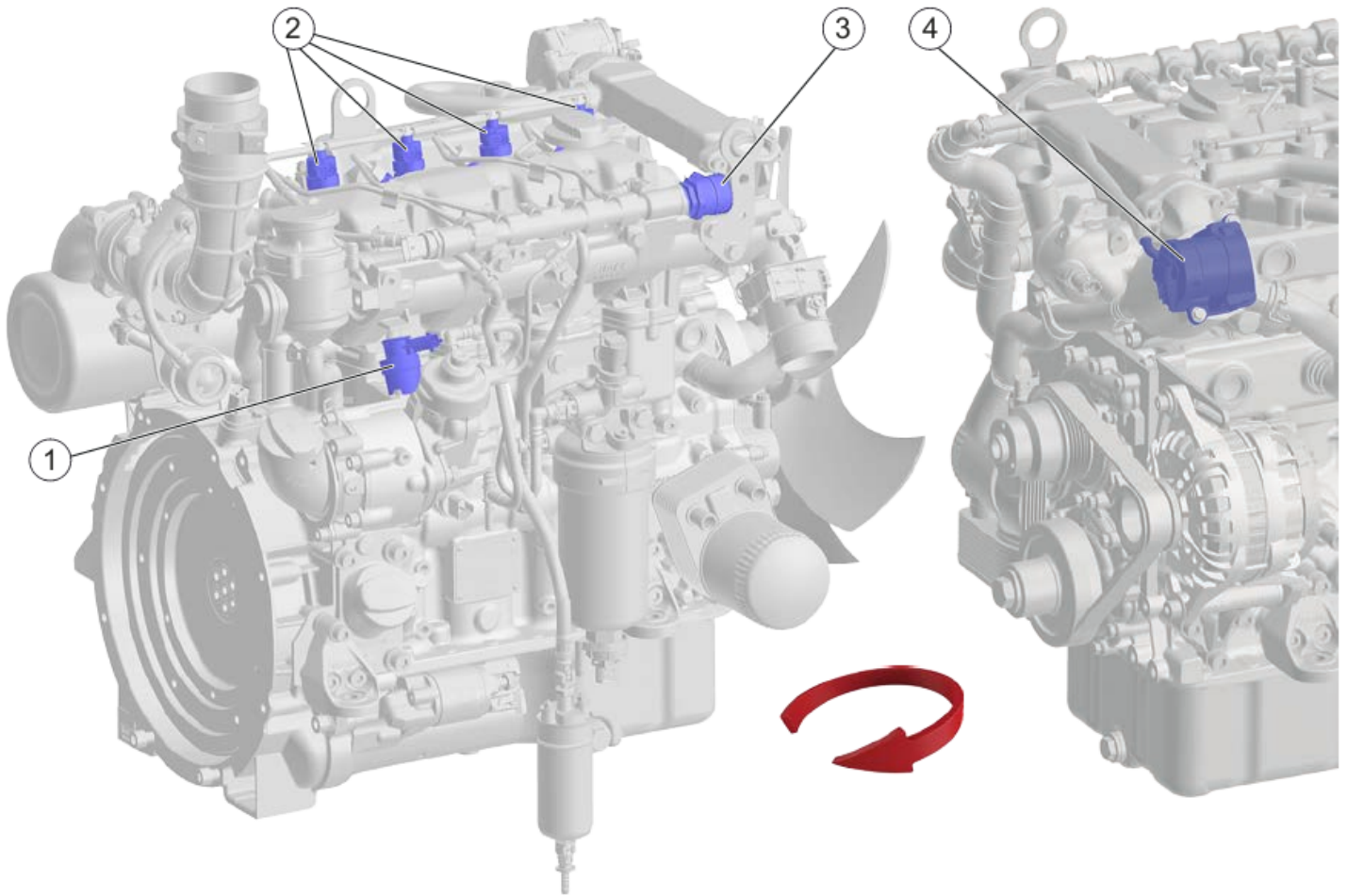
- 10. Exhaust temperature sensors (TICD)
- 11. Differential pressure sensor (TICD)
- 12. Intake throttle (TICD)
- 13. Air mass meter (TICD)

HATZ 3H50T Sensor Locations

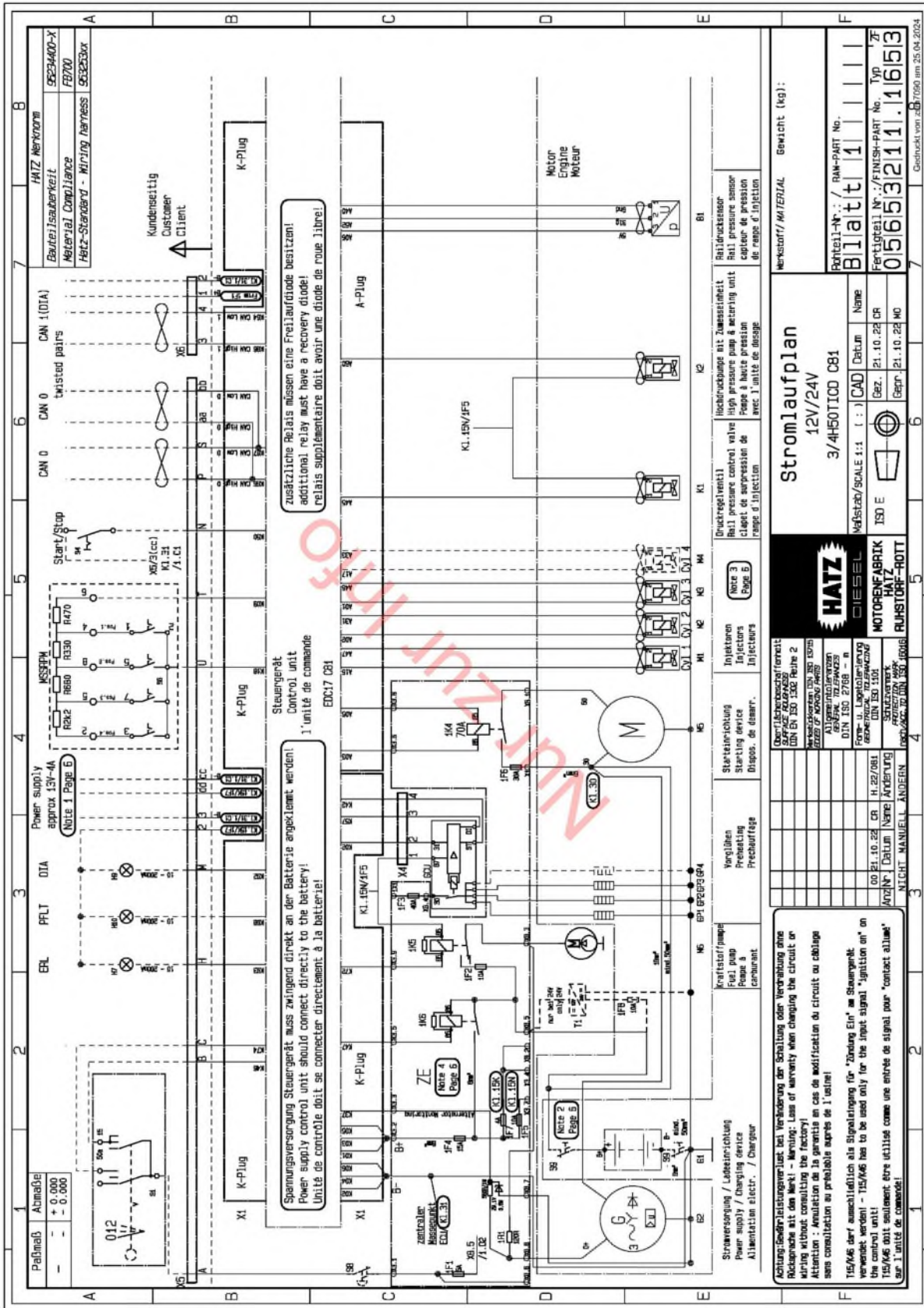


- 14. Ambient pressure sensor (integrated in the engine control unit)
- 15. Coolant level sensor (with external expansion tank)
- 16. Coolant level sensor (OPU cooler)

HATZ 3H50T Actuator Locations



1. Metering unit on the high-pressure pump
2. Injectors
3. Rail pressure control valve
4. EGR valve



Achtung/Sonderleistungswert bei Veränderung der Schaltung oder Verdrängung ohne Rücksicht auf den Wert! - Attention: Use of warranty when changing the circuit or moving it without consulting the factory! - Attention: Garantie en cas de modification de circuit ou déplacement sans consultation de l'usine!

115/K6 darf ausschließlich als Signalanlage für "Zündung Ein" am Steuergerät verwendet werden! - 115/K6 has to be used only for the input signal "ignition on" on the control unit!

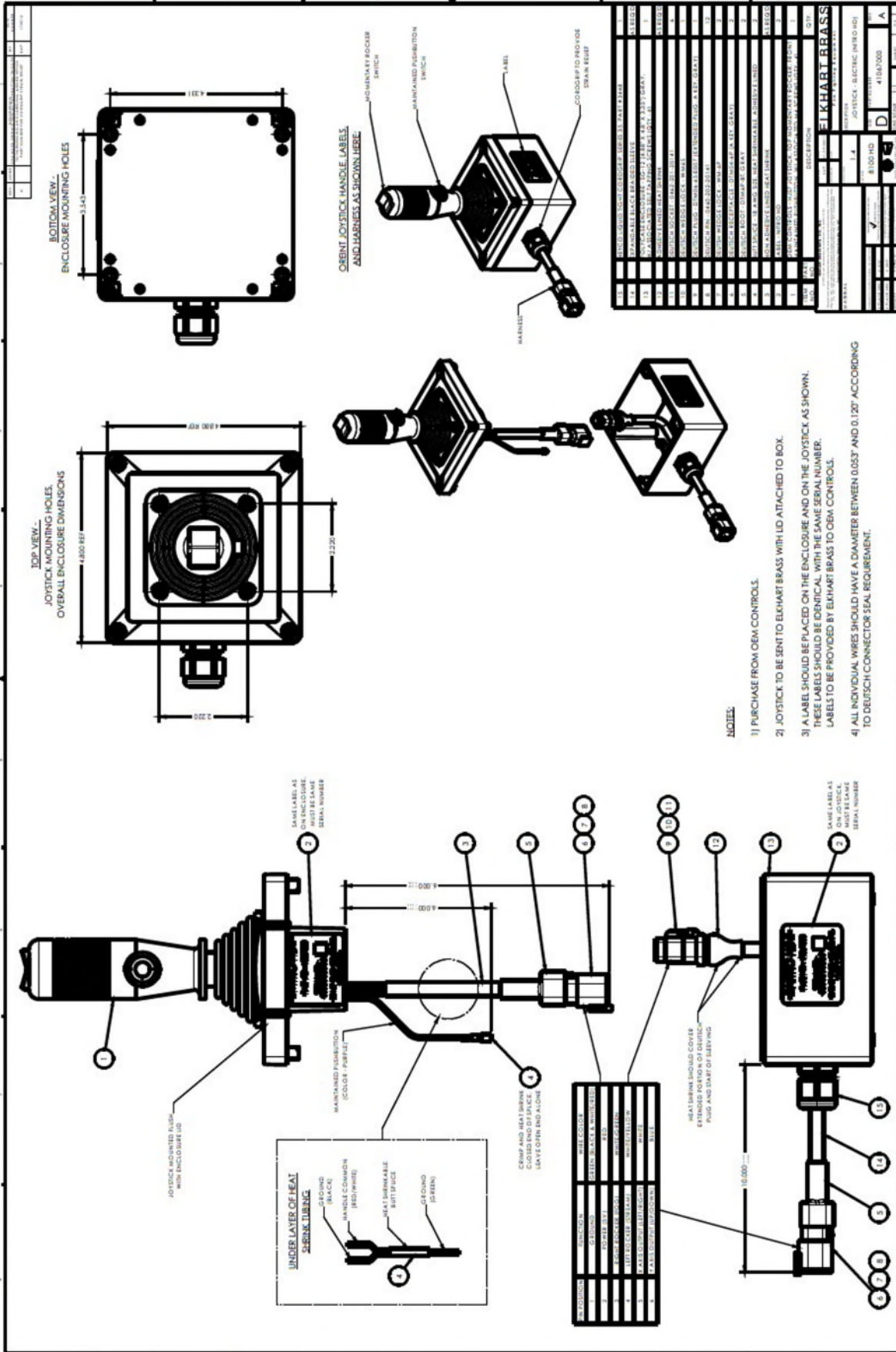
115/K6 doit seulement être utilisé comme une entrée de signal pour "contact allumé" sur l'unité de commande!

HATZ Merkmal	
Teilenummer	9823400-X
Material Compliance	FB700
HATZ-Standard - Wiring harness	982330x

Part-Nr. / RAM-PART No.	Blatt 1
Part-Nr. / FINISH-PART No.	056532111.1653
Typ	ZF

Stromlaufplan	12V/24V
3/4H50100 CB1	
Verstärkungsmaß/SCALE 1:1	CAD Datum
ISO E	Bez. 21.10.22 CR
	Capr. 21.10.22 MO

HATZ	DIESEL
MOTORENFABRIK	
HATZ	
RUHSTORF-ROTT	



ELKHART BRASS

FIRE FIGHTING EQUIPMENT A SAFE FLEET BRAND

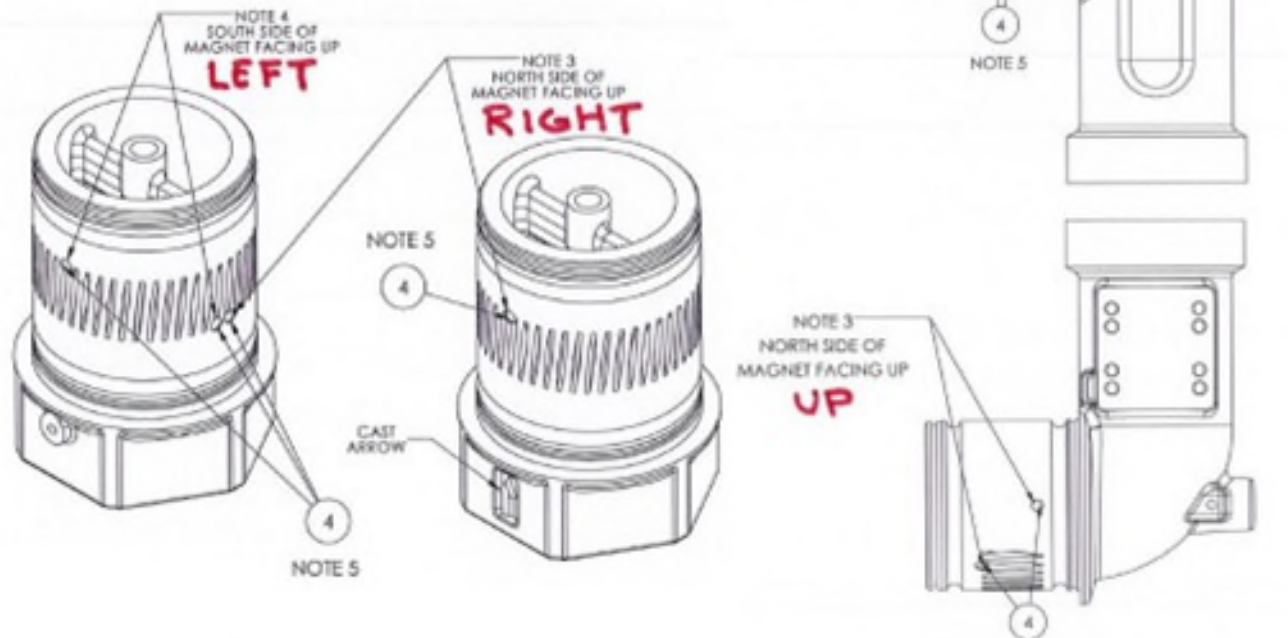
8100HD (Nitro HD) position sensor testing information

The position sensor used for controlling Vertical and Horizontal travel on the 8100HD (Nitro HD) is p/n 67566000.

- The sensors RED wire should have +5 volts on it.
- The sensors BLACK wire should be GROUND.
- The sensors GREEN wire should have;
 - Around +2.5v when no magnet is detected.
 - It should drop below +2.5 volts (around +1.5v) when detecting the North Pole of a magnet (RIGHT or UP).
 - It should go above +2.5 volts (around +3.5v) when detecting the South Pole of a magnet (LEFT or DOWN).

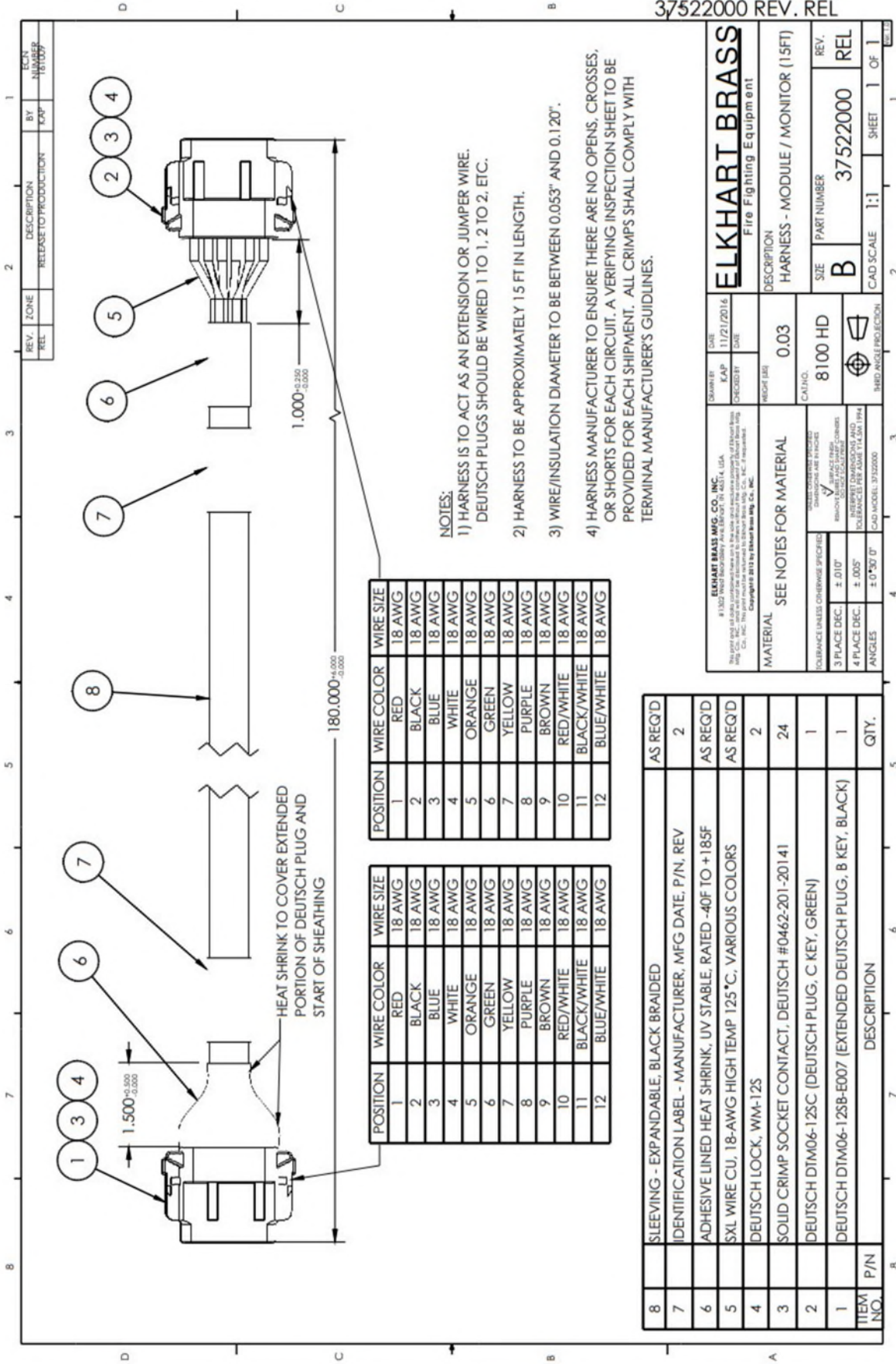
The magnets used on the 8100HD (Nitro HD) are p/n 46057000 and are positioned as follows.

- North Pole facing out for RIGHT and UP limits.
- South Pole facing out for LEFT and DOWN limits.



Last Revised 01/23/23

Elkhart Brass Mfg. Co., Inc. 1302 W. Beardsley Avenue • Elkhart, Indiana 46514 • 1-574-295-8330 • 1-800-346-0250
www.elkhartbrass.com



- NOTES:
- 1) HARNESS IS TO ACT AS AN EXTENSION OR JUMPER WIRE. DEUTSCH PLUGS SHOULD BE WIRED 1 TO 1, 2 TO 2, ETC.
 - 2) HARNESS TO BE APPROXIMATELY 15 FT IN LENGTH.
 - 3) WIRE/INSULATION DIAMETER TO BE BETWEEN 0.053" AND 0.120".
 - 4) HARNESS MANUFACTURER TO ENSURE THERE ARE NO OPENS, CROSSES, OR SHORTS FOR EACH CIRCUIT. A VERIFYING INSPECTION SHEET TO BE PROVIDED FOR EACH SHIPMENT. ALL CRIMPS SHALL COMPLY WITH TERMINAL MANUFACTURER'S GUIDELINES.

POSITION	WIRE COLOR	WIRE SIZE
1	RED	18 AWG
2	BLACK	18 AWG
3	BLUE	18 AWG
4	WHITE	18 AWG
5	ORANGE	18 AWG
6	GREEN	18 AWG
7	YELLOW	18 AWG
8	PURPLE	18 AWG
9	BROWN	18 AWG
10	RED/WHITE	18 AWG
11	BLACK/WHITE	18 AWG
12	BLUE/WHITE	18 AWG

POSITION	WIRE COLOR	WIRE SIZE
1	RED	18 AWG
2	BLACK	18 AWG
3	BLUE	18 AWG
4	WHITE	18 AWG
5	ORANGE	18 AWG
6	GREEN	18 AWG
7	YELLOW	18 AWG
8	PURPLE	18 AWG
9	BROWN	18 AWG
10	RED/WHITE	18 AWG
11	BLACK/WHITE	18 AWG
12	BLUE/WHITE	18 AWG

ITEM NO.	P/N	DESCRIPTION	QTY.
8		SLEEVING - EXPANDABLE, BLACK BRAIDED	AS REQ'D
7		IDENTIFICATION LABEL - MANUFACTURER, MFG DATE, P/N, REV	2
6		ADHESIVE LINED HEAT SHRINK, UV STABLE, RATED -40F TO +185F	AS REQ'D
5		SXL WIRE CU, 18-AWG HIGH TEMP 125°C, VARIOUS COLORS	AS REQ'D
4		DEUTSCH LOCK, WM-125	2
3		SOLID CRIMP SOCKET CONTACT, DEUTSCH #0462-201-20141	24
2		DEUTSCH DT1M06-125C (DEUTSCH PLUG, C KEY, GREEN)	1
1		DEUTSCH DT1M06-125B-E007 (EXTENDED DEUTSCH PLUG, B KEY, BLACK)	1

ELKHART BRASS Fire Fighting Equipment	
DATE: 11/21/2016 DRAWN BY: KAP CHECKED BY:	REVISION: 0.03 CAL NO.: 8100 HD PART NUMBER: B SIZE: 37522000 REV: REL
MATERIAL: SEE NOTES FOR MATERIAL TOLERANCE UNLESS OTHERWISE SPECIFIED: 3 PLACE DEC. ± .010" 4 PLACE DEC. ± .005" ANGLES ± 0°30' 0"	DESCRIPTION: HARNESS - MODULE / MONITOR (15FT) SHEET 1 OF 1 CAD SCALE: 1:1

