



Operator Manual

**Lube Truck PM Service
Hydraulic Drive**



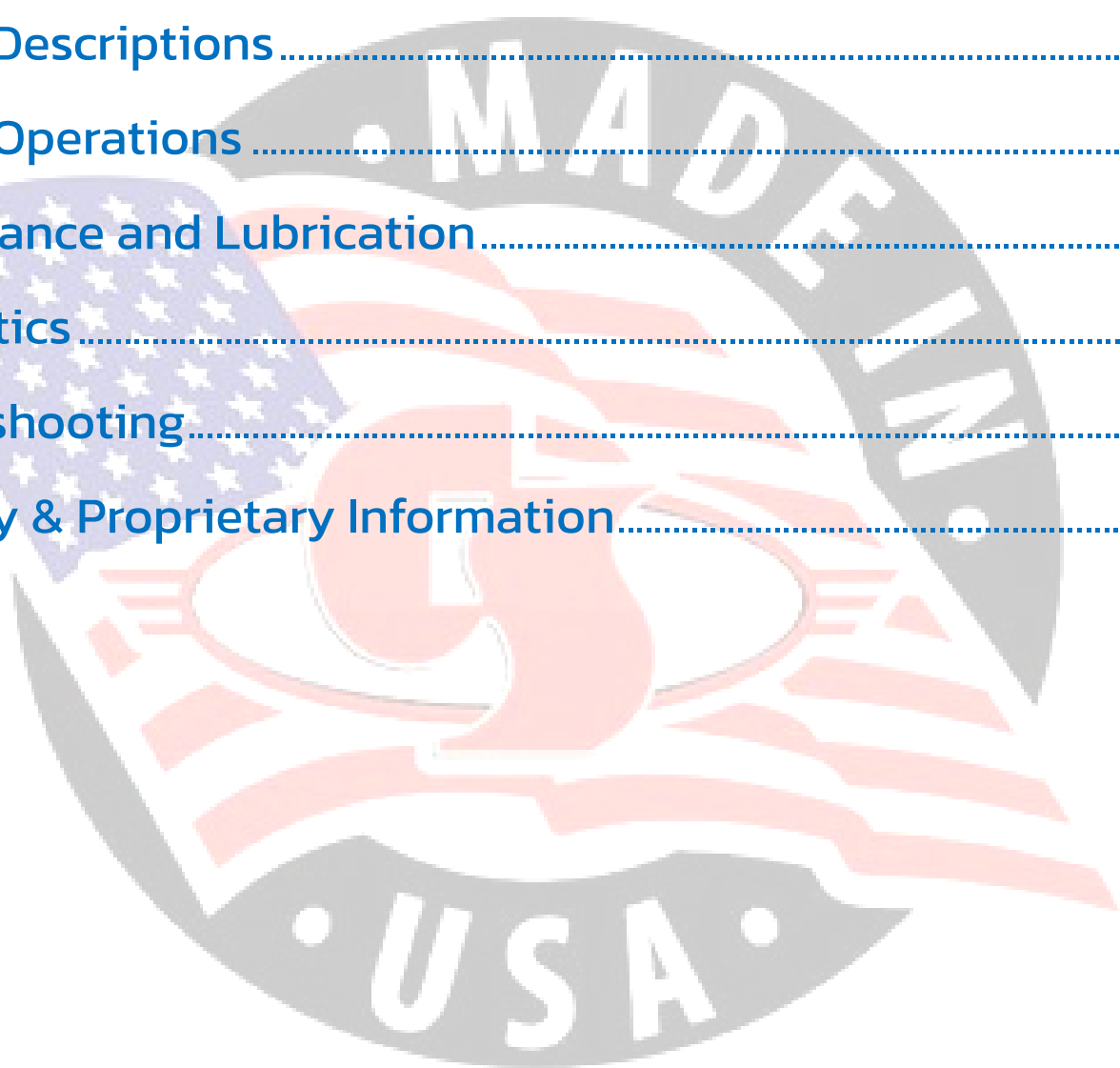
Curry Supply Co., 1477 Degol Industrial Drive, Hollidaysburg, PA 16648

YOUR JOBS. OUR TRUCKS.

TABLE OF CONTENTS

Sections

Introduction & Safety Messages.....	3
System Descriptions.....	6
Normal Operations.....	14
Maintenance and Lubrication.....	22
Schematics.....	26
Troubleshooting.....	41
Warranty & Proprietary Information.....	44



SECTION 1

Introduction & Safety Messages

CONTACT US

Curry Supply Company

1477 DeGol Industrial Drive, Hollidaysburg, PA 16648

service@currysupply.com CurrySupply.com

Parts 800.567.5127

Warranty Service 800.345.2829

MANUAL USAGE

This Operators Manual contains information to safely operate more than (1) configuration of "Curry Supply PM Service Lube Trucks". The parts shown may not reflect the exact configuration on your truck. "Custom" style trucks may have parts not listed. If your system is not covered in this manual, please contact Curry Supply Co. Support at 800.345.2829 or service@currysupply.com.

All personnel working on or operating the machine must become familiar with the following safety messages.

Due to the nature of these processes, ensure that all safety information, warnings, and instructions are read and understood before any operation or maintenance procedures are performed.

This manual does not supersede any local, state, or federal laws.

SAFETY MESSAGES

The following definitions are found throughout this manual and apply as follows:

WARNING

OPERATING PROCEDURES AND TECHNIQUES COULD RESULT IN PERSONAL INJURY OR LOSS OF LIFE IF NOT FOLLOWED CORRECTLY.

CAUTION


OPERATING PROCEDURES AND TECHNIQUES WHICH COULD RESULT IN DAMAGE TO EQUIPMENT IF NOT FOLLOWED CORRECTLY.

NOTE

OPERATING PROCEDURES AND TECHNIQUES THAT ARE CONSIDERED ESSENTIAL TO EMPHASIZE.


WARNING

IMPROPER USE OF EQUIPMENT
COULD CAUSE SERIOUS INJURY OR
DEATH. PLEASE READ AND
UNDERSTAND ALL INSTRUCTIONS.




WARNING

WHEN OPERATING OR WORKING
ON THE UNIT, KEEP HANDS AND
BODY PARTS CLEAR OF PINCH
POINTS.




WARNING

CONTACT WITH LIVE
ELECTRICAL CIRCUITS COULD
DAMAGE EQUIPMENT OR CAUSE
INJURY.




WARNING

MOVING PARTS CAN CRUSH
AND CUT. KEEP HANDS, FEET,
HAIR, AND LOOSE CLOTHING
AWAY FROM MOVING PARTS.



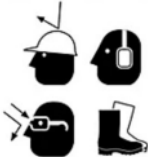
CAUTION

ADVERSE WEATHER CONDITIONS
CAN CAUSE EQUIPMENT DAMAGE.
WHENEVER POSSIBLE, PERFORM
MAINTENANCE INDOORS.




WARNING

ALWAYS WEAR THE PROPER PPE
WHILE OPERATING THE UNIT.




WARNING

DO NOT OPERATE THE UNIT WHILE
INTOXICATED OR EXTREMELY
EXHAUSTED.




WARNING

DO NOT WALK ON TOP OF THE
VEHICLE. FALLING FROM
VEHICLE CAN RESULT IN
SERIOUS INJURY.




CAUTION

DRAIN ALL WATER DAILY DURING
FREEZING TEMPERATURES.
FREEZING WATER CAN RESULT IN
DAMAGE TO EQUIPMENT.




WARNING

THE VEHICLE IS EQUIPPED WITH A
BACK-UP ALARM. ALARM MUST
SOUND WHEN OPERATING THIS
VEHICLE IN REVERSE.




WARNING

TOXIC FLUIDS OR FUMES CAN CAUSE
SERIOUS INJURY OR DEATH IF
SPLASHED IN THE EYES OR ON SKIN,
INHALED, OR SWALLED.



WARNING

ALWAYS WEAR YOUR SAFETY
BELT WHILE DRIVING THE VEHICLE.
IF VEHICLE TIPS, STAY BUCKLED
AND INSIDE OF CAB AREA.




⚠️ WARNING




Do not step on bare fuel tanks, rear frame rails, or battery/tool boxes. Steps, handhold and deckplate are required if rear access is necessary.

*A53-1001-8

⚠️ CAUTION



Heat treated alloy. Do not weld to rail or drill flanges. Cracks may result.



For welding components other than frame rails, disconnect the battery cables to prevent damage to electronic components.

*KIT A53-1001-10

<p>⚠️ WARNING</p>  <p>Hot fuel vapors. DO NOT remove cap near open FLAME.</p> <p><small>*K53-6008-001</small></p>	<p>CAUTION</p>  <p>ULSD</p> <p>This vehicle is to be filled with ULTRA LOW SULFUR DIESEL.</p> <p>Use of standard diesel fuel will cause damage to engine components and may void warranties.</p>
--	---

⚠️ WARNING

Use of incorrect air dryer could cause air system failure, leading to loss of vehicle control and serious personal injury or death. Replace only with matching manufacturer and part number air dryer. See operator's manual for more information.

*G53-6036

⚠️ WARNING

ROTATING SHAFTS ARE DANGEROUS
YOU CAN SNAG CLOTHES, SKIN, HAIR, HANDS, ETC. THIS CAN CAUSE SERIOUS INJURY OR DEATH

- EXPOSED ROTATING SHAFTS MUST BE GUARDED
- DO NOT WORK ON OR NEAR AN EXPOSED SHAFT WHEN ENGINE IS RUNNING
- SHUT OFF ENGINE BEFORE WORKING ON POWER TAKE-OFF OR DRIVEN EQUIPMENT
- READ PTO OWNER'S MANUAL FOR MORE SAFETY INFORMATION



DO NOT PAINT OVER THIS LABEL! 379274 A

⚠️ WARNING

⚠️ WARNING

THIS ENGINE IS EQUIPPED WITH AN ELECTRIC INLET HEATER. DO NOT SPRAY ETHER STARTING AIDS INTO AIR CLEANER AS THIS COULD RESULT IN AN EXPLOSION AND PERSONAL INJURY. SEE ENGINE MANUFACTURERS OPERATION MANUAL FOR ADDITIONAL INFORMATION.

*A53-1003

SECTION 2

System Descriptions

SIDE VIEW OF TRUCK



REAR VIEW OF TRUCK



FRONT VIEW OF TRUCK



The truck shown in the pictures has an Elliot body on a Peterbilt chassis. This Operator's Manual provides information on how to safely operate more than one version of the "Curry Supply Company PM Service Lube Truck." The truck shown may not exactly match your truck's configuration. "Custom" trucks may have different parts that aren't listed here. If your system isn't covered in this manual, please contact Curry Supply Co. Support at 800-345-2829 or service@currysupply.com.

EQUIPMENT

Trucks are manufactured with various equipment combinations. Find more information about these components by clicking the links in the following table. If unsuccessful finding the information needed, call Curry Supply Company at 1-800-345-2829.

14-Jan-25

Equipment	Manufacturer	Web Link
Truck Body/Tool Storage	Supreme by Wabash International LLC.	Spartan Service Truck Body
	Elliott Machine Works, Inc.	PM Service Lube Unit *(password protected – see note below)
Power Take Off (PTO)	Parker Hannifin Corporation	280 Series
		280 Series Parts List
Dispensing Meter	Graco Inc.	EM8_EM20_IM20
Dispensing Valve		SDV15_XDV20
Diaphragm Pump		Husky 1590
		Husky 1050A
Piston Pump		Fire-Ball 300
Lube Equipment – Couplers, Adapters, Nozzles & Z-Swivels		Lube Equipment
Grease Dispense Valve		Proshot 243446
Reels	Hannay Reels, Inc.	N700 Series
		N800 Series
Auxiliary Heater	Red Dot Corporation	R-290_R-295
Air Conditioning & Heating		Service Training Manual

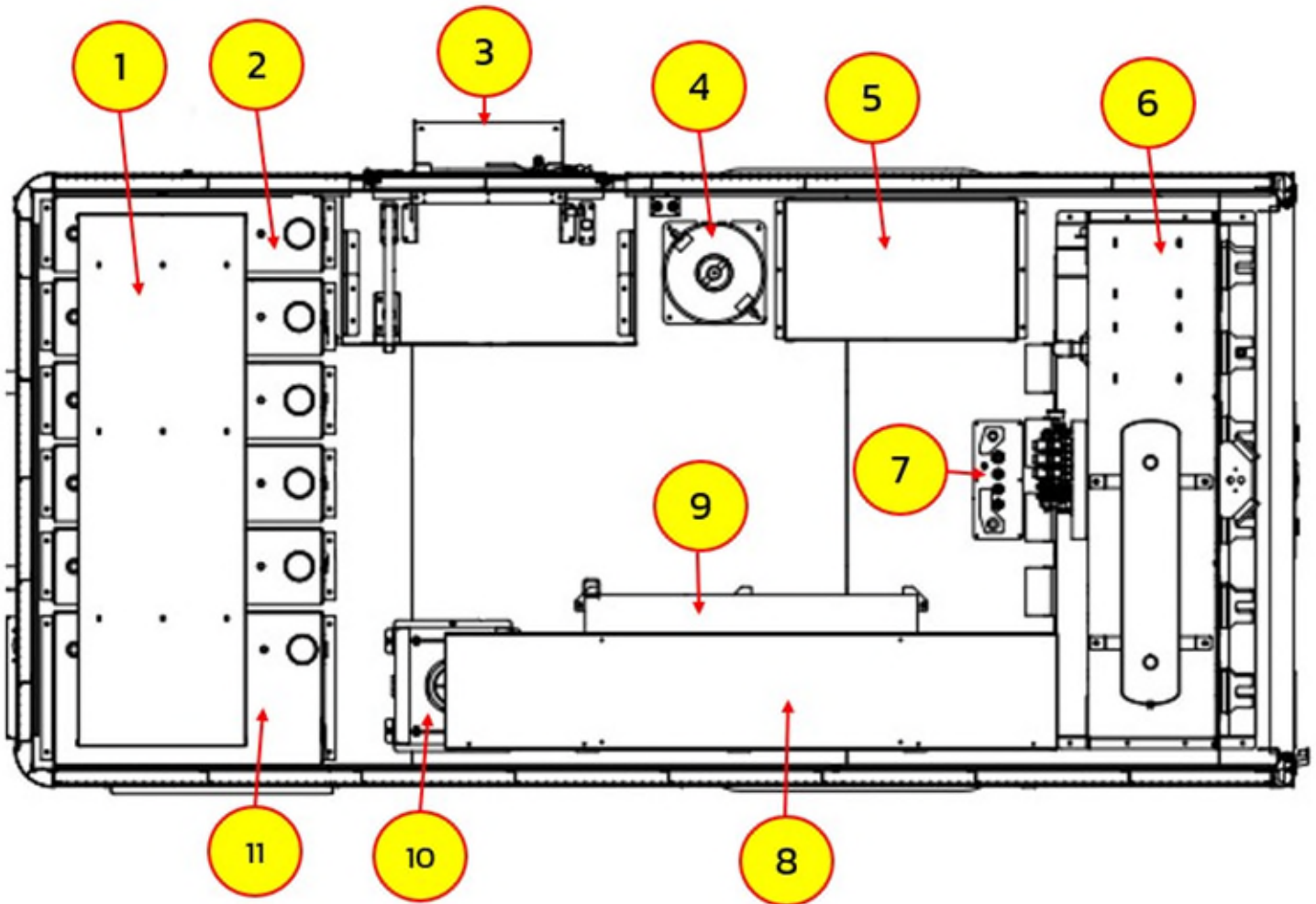
***NOTE:**

To obtain a password for accessing the manual, email elliottmachine@elliottmachine.com or call 1-800-299-0412. Be sure to include the truck's serial number, which can be found on the front page of the condensed Elliott Machine Works, Inc. manual that came with the truck or on the identification plate located on the frame outside the driver's side door.



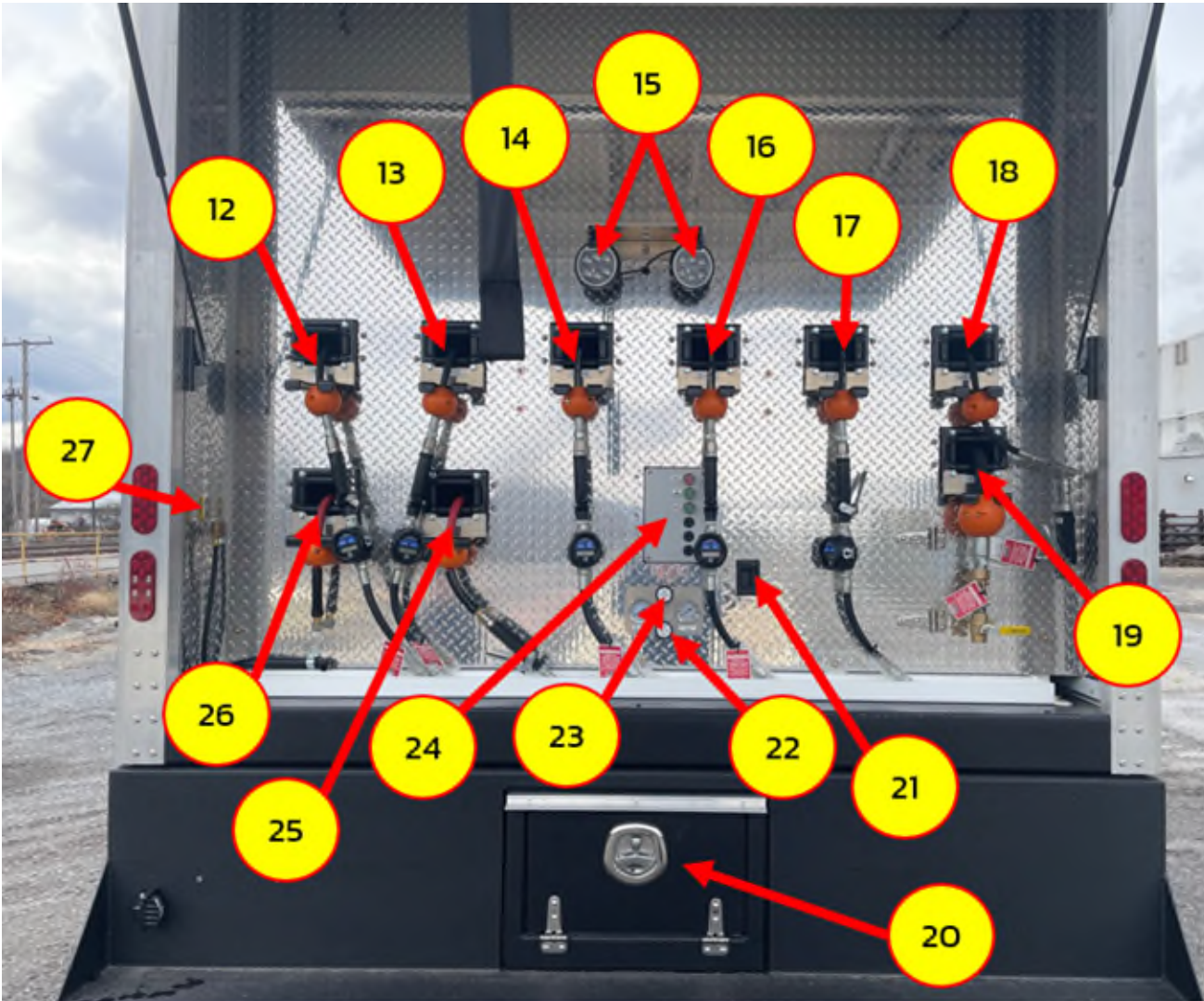
14-Jan-25

INSIDE COMPARTMENT (TOP-DOWN VIEW)



- | | |
|----------------------------------|------------------------------------|
| 1. Tool Storage | 7. Compressed Air Manifold |
| 2. 5 Product Oil Tanks 55 Gallon | 8. Tool Storage |
| 3. Stowable Step | 9. Work Bench |
| 4. Grease Drum Nest | 10. Hydraulic Reservoir |
| 5. Tool Storage | 11. Waste/Used Oil Tank 100 Gallon |
| 6. Reel Stand | |

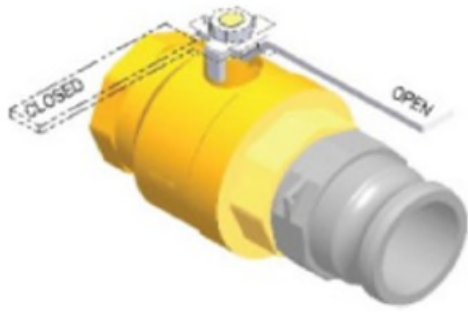
REAR COMPARTMENT



- 12. Dispensing Hose A
- 13. Dispensing Hose B
- 14. Dispensing Hose C
- 15. Dome Lights
- 16. Dispensing Hose D
- 17. Dispensing Hose E
- 18. Grease Dispensing Hose
- 19. Used Oil Hose
- 20. Used Filter Box
- 21. Access door to 4-Way valve
- 22. Used Oil Air Switch
- 23. Anti-Freeze Air Switch
- 24. Control Panel
- 25. Anti-Freeze Dispensing Hose
- 26. Air Hose
- 27. Air System Drain Valve

14-Jan-25

BALL VALVES



To open the valve, move the handle in line with the tube/hose.

To close the valve, move the handle 90° with the tube/hose.

GRACO METER



Each fluid dispensing hose has a meter that shows the amount of fluid passing through the meter. It can display gallons, quarts, pints and liters.

EMERGENCY BRAKE

May be located by your left knee, left foot or on the dash. A message will show on the console to let you know if the emergency brake is on or off.

Left Knee



Left Foot



Dash



AIR DRAIN VALVE

Trucks with built-in air compressors have a drain valve. These are located in different places depending on the truck configuration. This valve must be closed in order for the air tank to build pressure.

Outside the driver's side door.



Inside right of the rear door.



Inside left of the rear door.



AUXILIARY CONTROL PANELS

The following panels control various truck components, including the Power Take Off (PTO), flood lights, compartment lights, strobe lights, inverter, work lights, and air compressor. The truck key must be in the "on" position, or the truck must be running, to activate these systems.

OVERHEAD



DASH



14-Jan-25

DASH continued



BETWEEN SEATS



BOX HEAT

Anti-freeze from the truck engine flows to the box heaters for warmth.



Ensure ball valves located on the frame outside the passenger side door are open so engine coolant may flow to the heaters.



Turn on the heaters with the control panel inside the cab of the truck.



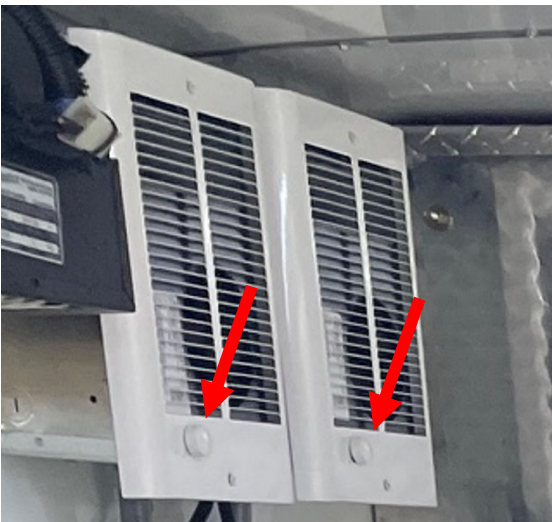
14-Jan-25

AUXILIARY BOX HEAT

Located in the truck box passenger side.



These electric heaters are controlled with a switch at the bottom of the units.



The heaters must be plugged into external 110V.



NOZZLE

Several of the dispensing hoses ends have nozzles to stop fluid from dripping from the hose. To open, twist counterclockwise.



HYDRAULIC FLUID RESERVOIR


Located beside the box entrance and mounted to the truck frame. Filled with hydraulic oil that meets specification ISO VG 68.




SECTION 3

Normal Operations

This section provides the vehicle operator with step-by-step operating procedures for the installed systems.

WARNING	
ALWAYS APPLY THE EMERGENCY BRAKE BEFORE EXITING THE VEHICLE.	

WARNING	
ALWAYS CHOCK THE WHEELS IMMEDIATELY UPON EXITING THE VEHICLE.	

Prior to any operation, please perform a walk around inspection of the vehicle. Check specifically for any leaks or broken hoses.

CONTROL PANEL-CAB



Truck key must be on to energize this control panel. Preferably, the truck should be running to prevent the truck batteries from discharging.

The switch labeled heaters refers to the box heaters in which the truck anti-freeze warms. It does not activate the electric heaters in the box.

The MAIN POWER light turns on when the MAIN POWER switch on the control panel in the rear compartment is activated.

14-Jan-25

CONTROL PANEL-REAR COMPARTMENT



Energize the air compressor and dispensing systems by pressing the MAIN POWER switch.

Press the AIR COMPRESSOR switch to turn on the air compressor. NOTE: the truck must be idling with the PTO engaged.

Press the DOMES switch to turn on the dome lights.

TRUCK BODY/TOOL STORAGE

The storage bay locks are covered by shields

Type 1

To unlock it, slide the shield to the side with the tip of the key while pushing the key into the lock.



Type 2

To unlock it, push the shield in with the key.



14-Jan-25

POWER TAKE OFF (PTO) & COMPRESSOR

CAUTION

IF THE PTO LIGHT IS ON WHEN THE TRUCK ENGINE IS NOT RUNNING, TURN IT OFF PRIOR TO STARTING THE TRUCK.

CAUTION

DO NOT TURN ON THE PTO WHILE THE TRUCK IS IN GEAR.

1. With the truck in park/neutral and emergency brake on, lift the PTO button up. The PTO will turn on and the engine idle will increase to 1200 RPM.



CAUTION

OPERATING THE SYSTEM WITH THE ENGINE IN EXCESS OF 1200 RPM WILL NOT INCREASE PERFORMANCE AND WILL CAUSE PREMATURE FAILURE OF THE HYDRAULIC COMPONENTS.

LOWERING THE STEP

1. Open the compartment door.



2. Pull out on the spring-loaded retaining pin.



3. Lower the step.



DISPENSING METER



1. Press RESET key to wake up the display and clear the previous quantity before dispensing fluid. The digital display goes blank after one minute of non-use. To wake the display, press the TOTAL key or run fluid through the meter.

The meter can be adjusted to display different units of measurement:

- a. Pints (PTS)
- b. Quarts (QTS)
- c. Gallons (GAL)
- d. Liters (L)

Press the TOTAL & RESET keys together. All the segments of the digital display illuminate for 6 seconds. The software revision displays for 2 seconds. The meter goes blank and the volume unit blinks. The meter is now in Setup Mode. Release the TOTAL & RESET keys. Repeatedly press the TOTAL key to change the unit of

measure. When the desired unit appears, press the RESET key to save the selection.

The meter is factory set to display CAL when the meter must be calibrated. See page 10 of the meter manual. The manual may be obtained by clicking the link in section two of this manual.

Replacement of the meter battery may be found on page 12 in the same manual.

CAUTION

NEVER ALLOW THE PUMP TO RUN DRY OF FLUID BEING PUMPED. A DRY PUMP WILL QUICKLY ACCELERATE TO A HIGH SPEED, POSSIBLY DAMAGING ITSELF, AND MAY GET VERY HOT.

LUBE DISPENSING

1. With the Emergency brake applied, chocks under the wheels, PTO engaged & MASTER POWER turned on, pull the dispensing hose to the desired area.
2. Turn on and clear meter display (see previous procedure).
3. If a twist nozzle is at the end of the hose, twist it counterclockwise to open.



14-Jan-25

4. Squeeze the trigger and dispense the lube.



5. When dispensing is finished, release the trigger. close the twist nozzle and rewind the hose.

CAUTION

NEVER ALLOW THE PUMP TO RUN DRY OF FLUID BEING PUMPED. A DRY PUMP WILL QUICKLY ACCELERATE TO A HIGH SPEED, POSSIBLY DAMAGING ITSELF, AND MAY GET VERY HOT.

GREASE DISPENSING

1. With the Emergency brake applied, chocks under the wheels, the MASTER POWER turned on and PTO engaged, turn on the ball valve to release air pressure to the grease system.



2. If a twist nozzle is at the end of the hose, twist it counterclockwise to open.



3. Pull the dispensing hose to the desired area. Squeeze the trigger and dispense the lube.



4. When dispensing is finished, release the trigger, close the nozzle and rewind the hose.

5. To prevent a mess if the grease trigger is bumped or malfunctions, turn the ball valve off.



14-Jan-25

ANTI-FREEZE DISPENSING

1. With the Emergency brake applied, chocks under the wheels, PTO engaged & the MASTER POWER turned on, push the Anti-Freeze switch in on the oil/air regulator.



2. If a twist nozzle is at the end of the hose, twist it counterclockwise to open.



3. Pull the dispensing hose to the desired area. Squeeze the trigger and dispense the lube.



4. When it is finished, release the trigger, close the nozzle and rewind the hose.
5. Pull out the Anti-Freeze switch on the oil/air regulator.



USED OIL RECOVERY (SUCTION)

1. With the Emergency brake applied, chocks under the wheels, PTO engaged & the MASTER POWER turned on, pull the dispensing hose to the desired area and connect to the equipment to be emptied.
2. Move the four-port valve to the "Fill Holding Tank" position. Note you must open the hatch to gain access to the valve.



14-Jan-25

3. Make sure the ball valve on the side of the pump is closed (To empty the used filter box, open this valve & close the ball valve at the end of the hose).



4. Open the ball valve at the end of the hose (to empty used filter box, leave this valve closed).



5. Push the used oil air switch in.



6. When finished, close the ball valve at the end of the hose.



7. Pull the used oil air switch out.



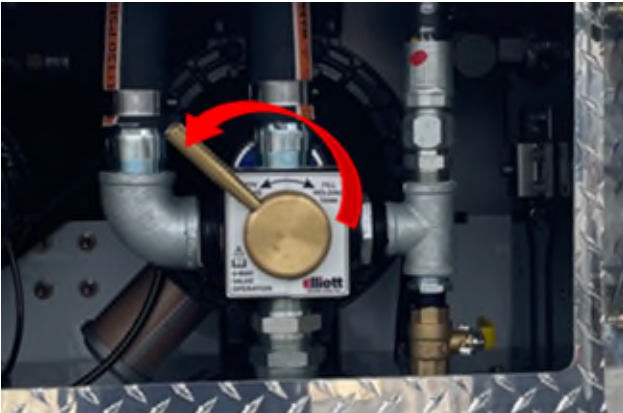
8. Rewind the hose.

USED OIL DISPENSING (PRESSURE)

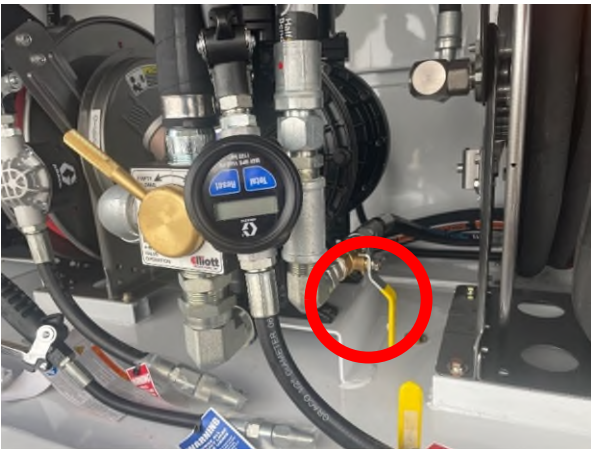
1. With the Emergency brake applied, chocks under the wheels, PTO engaged & the MASTER POWER turned on, pull the dispensing hose to the desired area and connect to the equipment to be serviced.

14-Jan-25

2. Move the four-port valve to the "Empty Holding Tank" position.



3. Make sure the ball valve on the side of the pump is closed.



4. Open the ball valve at the end of the hose.



5. Push the used oil air switch in.



6. When finished, close the ball valve at the end of the hose.



7. Pull the used oil air switch out.



8. Rewind the hose.

Section 4

Maintenance and Lubrication

Due to numerous jobs and purposes, varying environments and climates, and importance to safety, routine maintenance is highly recommended. Regular maintenance keeps the trucks functioning correctly and at optimum efficiency. The following tasks can help prevent breakdown and keep the truck on the job when you need it most.

NOTE

FOR THE MOST ACCURATE MAINTENANCE FOR A SPECIFIC CHASSIS SYSTEM, REFER TO THE PRODUCT SPECIFIC USER MANUAL.

DAILY SAFETY MAINTENANCE

Tires – Check for proper inflation and tread depth.

Brake System – Routine inspections on brake pads and calipers for safe operation.

Lights – Check all lights are working and functioning correctly.

Fluids – Check that the engine oil, coolant, Hydraulic fluid, and wiper fluid are all at the right levels.

Hoses – Check for leaks and cracks, and make sure everything is securely fastened.

HYDRAULIC FLUID

FIRST 50 HOURS OF OPERATION

- Replace the fluid and filter.

DAILY

- Check the fluid level daily before use. Fill with fluid that meets specification ISO VG 68. The filter must be rated for 10 micron.



TOOL STORAGE/TRUCK BODY

DAILY

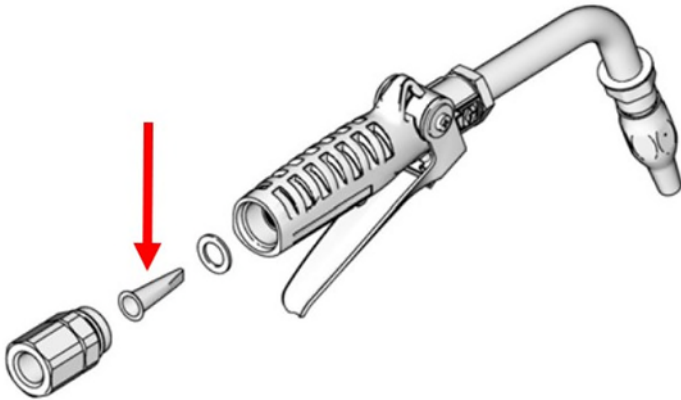
- Ensure doors latch securely.
- Insert the key into each door and turn to lock. Ensure the doors do not open.
- Insert the key into each door and turn to unlock. Ensure the doors open.

MONTHLY

- Lubricate hinges with white lithium spray lubricant.
- Spray door locks with lock lubricant.

DISPENSING UNIT STRAINER

Clean as needed.



AIR DRAIN VALVE

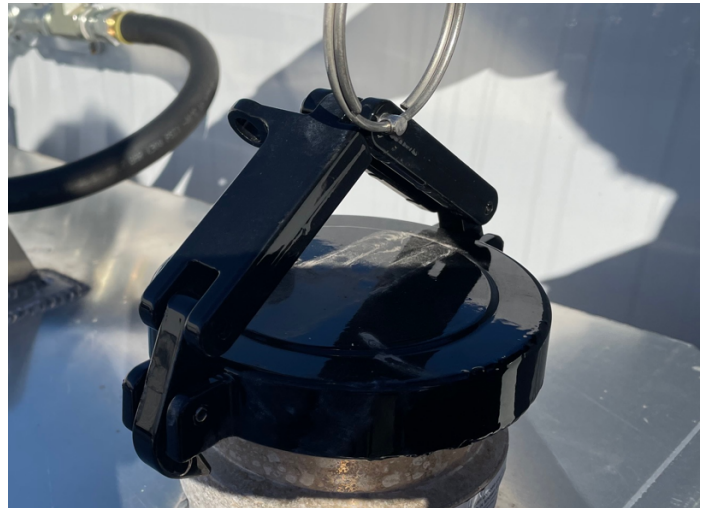
Drain daily and after each use.



TANK AIR BREATHER

ANNUALLY

Located on top of each product tank. The breather is inside the product cap. Inspect using forced air through the filter. Replace if air does not freely move through the filter.



POWER TAKE OFF (PTO)

Upon delivery of the vehicle and initial operation, check for leaks from any location. The PTO should be serviced at the same intervals as the transmission. The transmission maintenance should be completed as recommended by the vehicle manufacturer. The PTO is part of a system that includes the drive shaft which should also be checked at the same time.

Within the first week of use, recheck the installation of the PTO. Check for leaks and loose mounting hardware (studs, cap screws, nuts). Recheck the cable or lever connections for proper adjustment and tighten any loose connections. At regular maintenance intervals,

14-Jan-25

check adjustments and lubricate moving parts, tighten and repair the connections, mounting hardware, cable, or lever linkages.

DAILY BEFORE USE

- Check for any leaks.
- Check the transmission oil level.
- Check for any dents or damage to PTO or driveshaft system.

EVERY 100 HOURS

- Recheck the installation of the PTO.
- Check for leaks and loose mounting hardware (studs, cap screws, nuts).
- Recheck and tighten any loose connections.
- Check adjustments and lubricate moving parts.
- Check and retighten any bolts, linkages, or mounting hardware.
- Apply anti-seize grease to the output shaft.

DIAPHRAGM PUMP

EACH USE

- Check all hoses for wear or damage and replace as necessary.
- Check all threaded connections are tight and leak-free.

EVERY 500 HOURS OR MONTHLY

- remove the hose from the pump air inlet and add two drops of machine oil to the air inlet.

CAUTION

DO NOT OVER-LUBRICATE THE PUMP. OIL IS EXHAUSTED THROUGH THE MUFFLER, WHICH COULD CONTAMINATE THE FLUID SUPPLY OR OTHER EQUIPMENT. EXCESSIVE LUBRICATION CAN ALSO CAUSE THE PUMP TO MALFUNCTION.

AS NEEDED

- Flush the pump often enough to prevent the fluid from drying or freezing in the pump. Use a compatible solvent.
- Always flush the pump and relieve the pressure before storing it for any length of time.

AIR CONDITIONING

EVERY 3 MONTHS

- Check noise level
- Check clutch pulley
- Check oil level
- Run system 5 minutes
- Check belts for tension (120lbs max)
- Clean debris from coils with compressed air
- Check condenser inlet/outlet for obstructions &/or damage
- Check receiver/drier inlet line from condenser (hot to touch)
- Check sight glass (streaks or cloudiness)
- Check discharge lines (hot to touch)
- Check suction lines (cold to touch)
- Operate manual controls through full functions

EVERY 6 MONTHS

- Inspect shaft seal for leakage
- Check and tighten mounting bracket bolts
- Check compressor alignment to clutch with crankshaft drive pulley
- Inspect fittings, clamps and hoses
- Check outlets in cab for temperature 40 to 50°F
- Check proper operation of fan clutch
- Inspect all wiring connections

EVERY YEAR

- Perform compressor manifold gauge check
- Verify clutch is engaging
- Replace receiver-drier if system is opened
- Inspect expansion valve capillary tube for leakage, damage & looseness
- Clean debris from evaporator fins and tubes with compressed air
- Check evaporator solder joints on inlet and outlet tubes for leakage
- Inspect evaporator condensate drain (R-12 or oil leak)
- Check thermostatic switch for proper operation

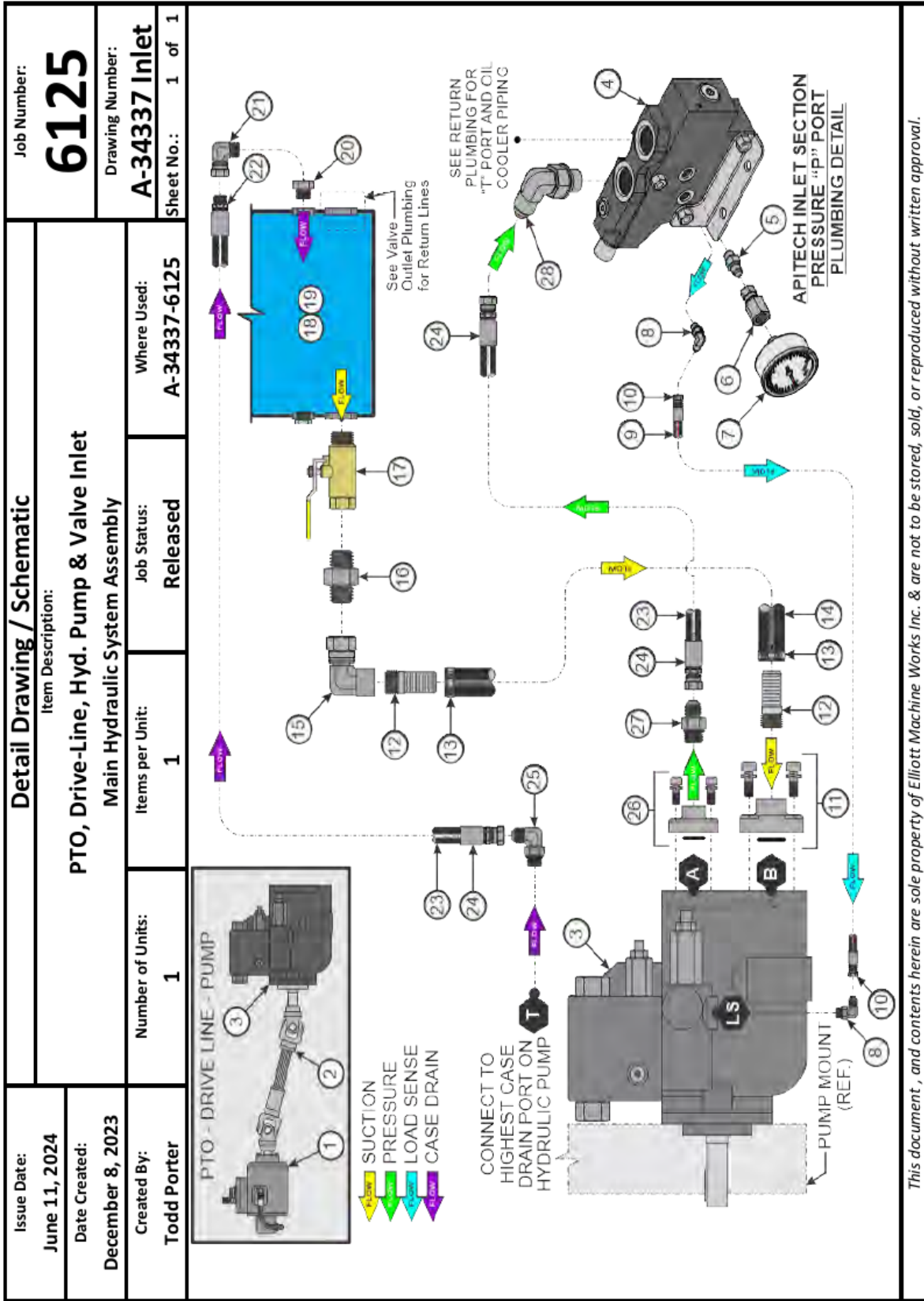
Section 5

Schematics

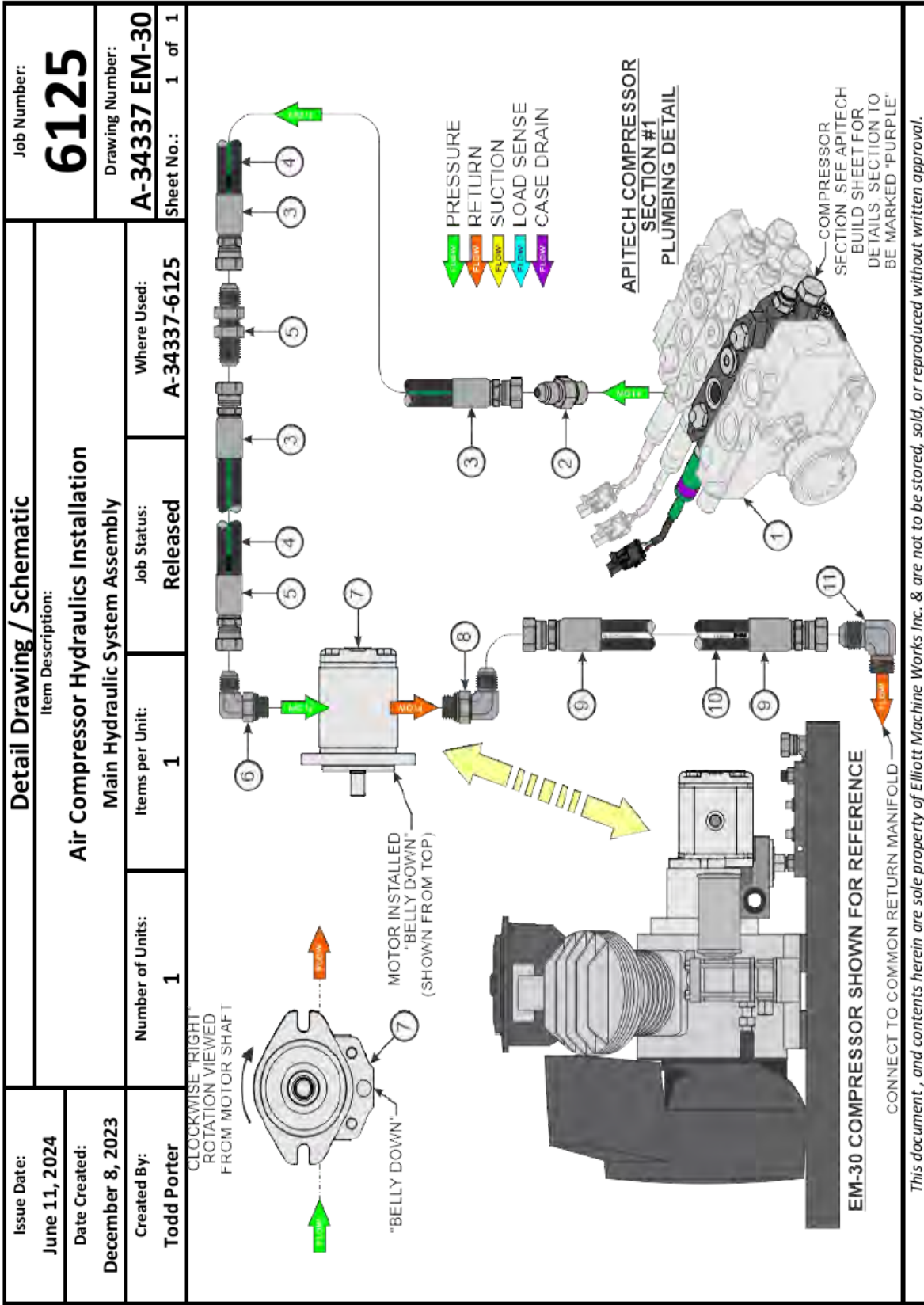
PTO, Driveline, Hydraulic Pump & Valve Inlet SCH1-1	Page 27
Air Compressor Hydraulics SCH2-1	Page 28
Oil System Hydraulics SCH3-1	Page 29
Hydraulic Return, Filter & Oil Cooler SCH4-1	Page 30
Apitech Valve Wiring SCH5-1	Page 31
Oil Cooler Wiring SCH6-1	Page 32
Air Supply System SCH7-1	Page 33
Air Regulator Stack SCH8-1	Page 34
Diaphragm Pump Assembly SCH9-1	Page 35
Interior Lighting SCH10-1	Page 36
Fuse & Relay Box SCH11-1	Page 37
DOT, Interior, Flood & Strobe Lights SCH12-1	Page 38
Heating System Truck Coolant SCH13-1	Page 39
Heating System Shore Power SCH14-1	Page 40

CAUTION

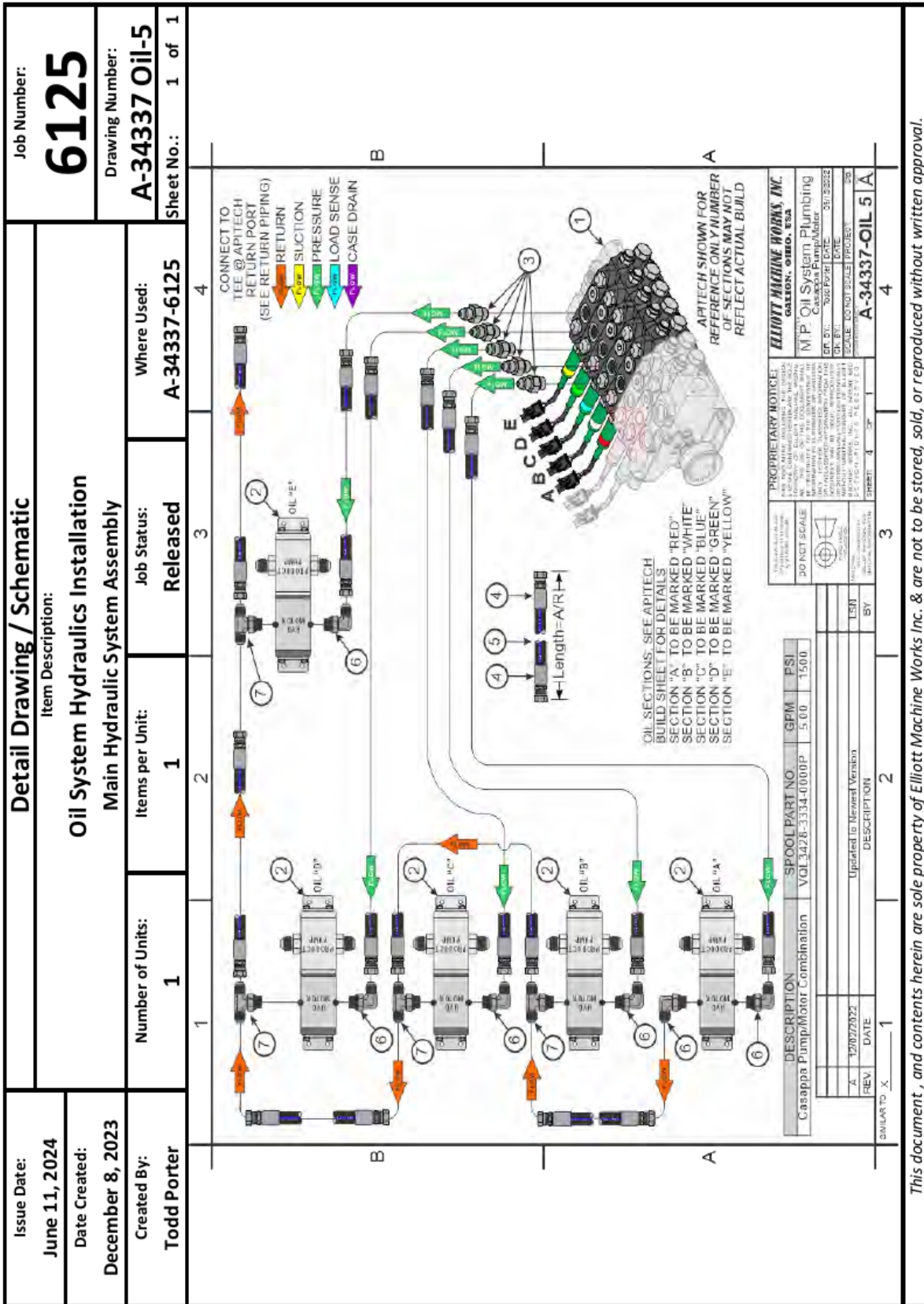
PLEASE CONTACT CURRY SUPPLY COMPANY BEFORE ATTEMPTING ANY CHANGES TO THE ELECTRICAL SYSTEMS. DOING SO MAY CAUSE EQUIPMENT DAMAGE OR VOID WARRANTY.



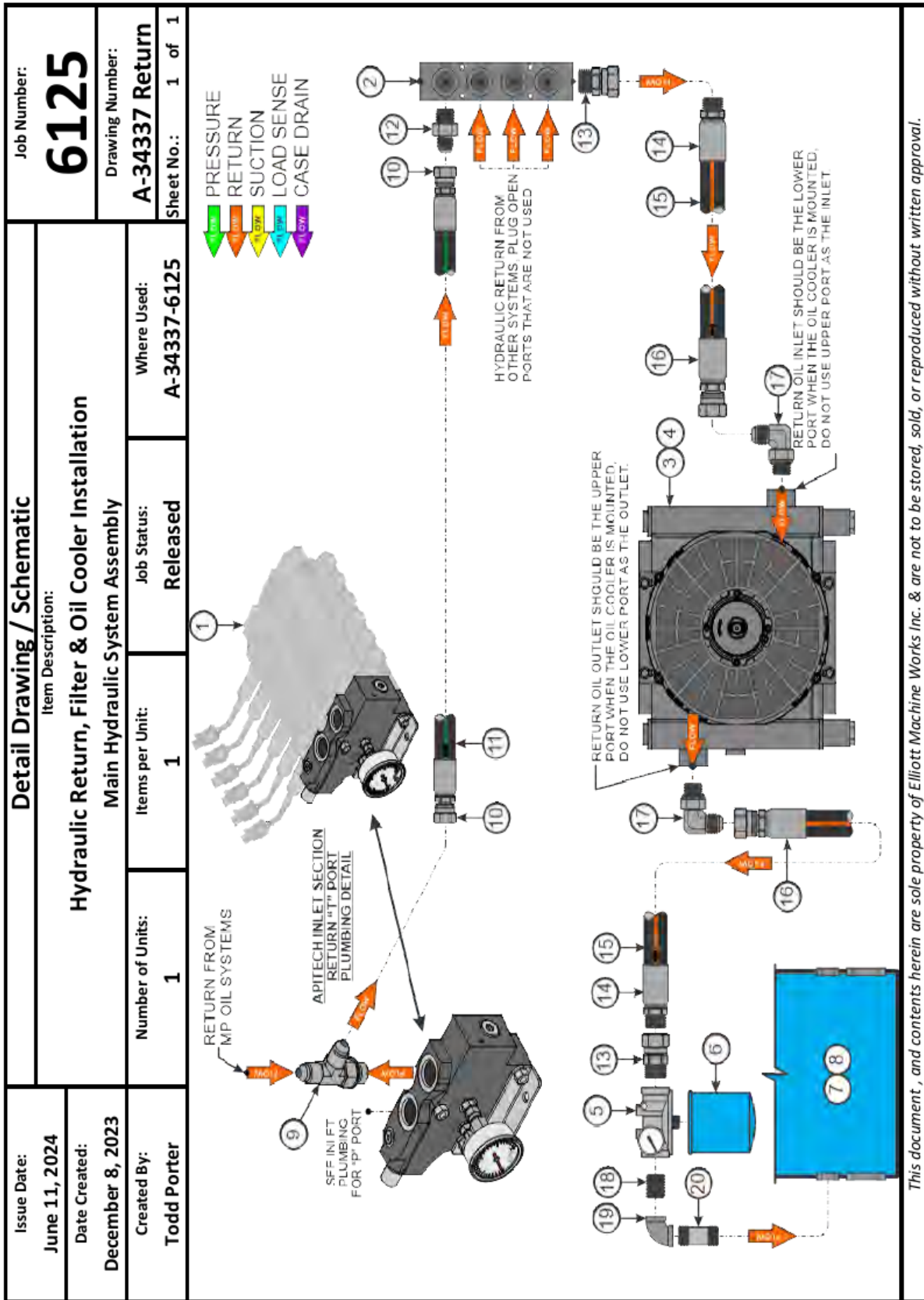
This document, and contents herein are sole property of Elliott Machine Works Inc. & are not to be stored, sold, or reproduced without written approval.



This document, and contents herein are sole property of Elliott Machine Works Inc. & are not to be stored, sold, or reproduced without written approval.



This document, and contents herein are sole property of Elliott Machine Works Inc. & are not to be stored, sold, or reproduced without written approval.



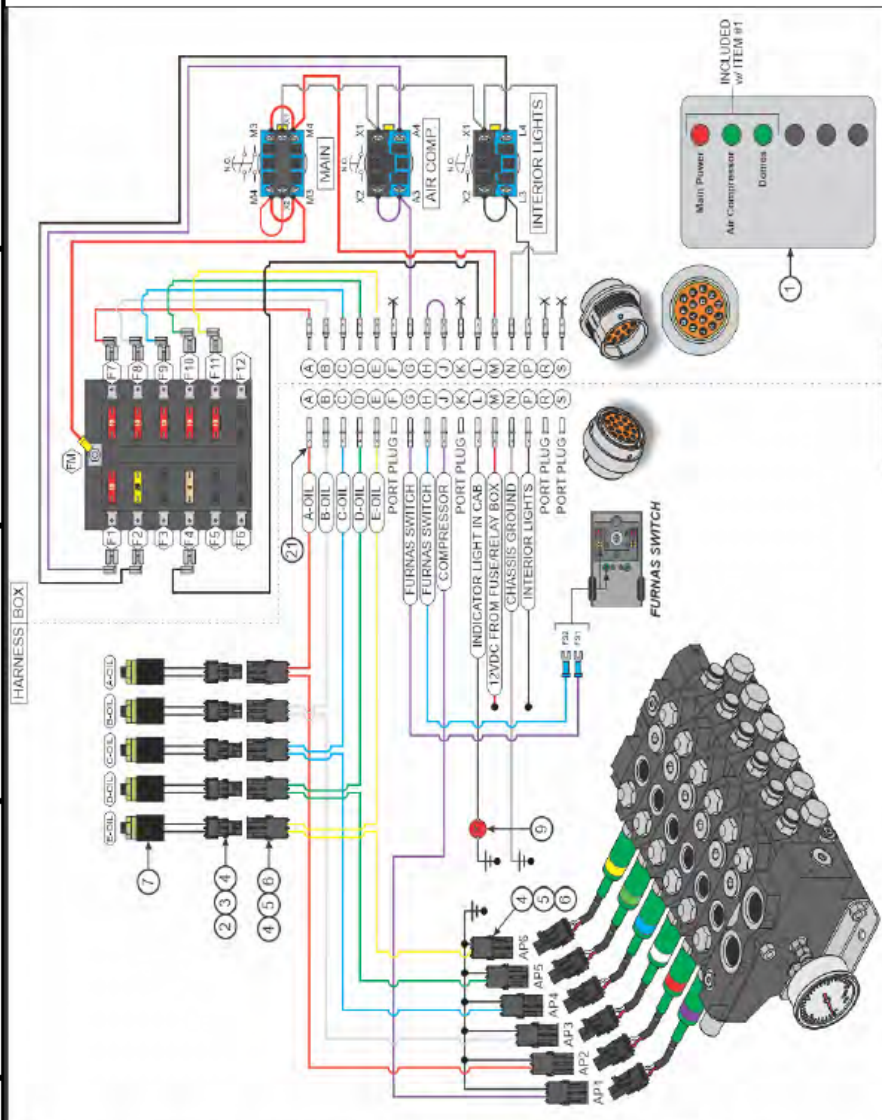
This document, and contents herein are sole property of Elliott Machine Works Inc. & are not to be stored, sold, or reproduced without written approval.

Issue Date: June 11, 2024	Detail Drawing / Schematic			Job Number: 6125
Date Created: December 8, 2023	Item Description: Apitech Valve Wiring Schematic Main Hydraulic System Assembly			Drawing Number: B-38843-PM
Created By: Todd Porter	Number of Units: 1	Items per Unit: 1	Job Status: Released	Where Used: A-34337-6125
		Sheet No.: 1 of 1		

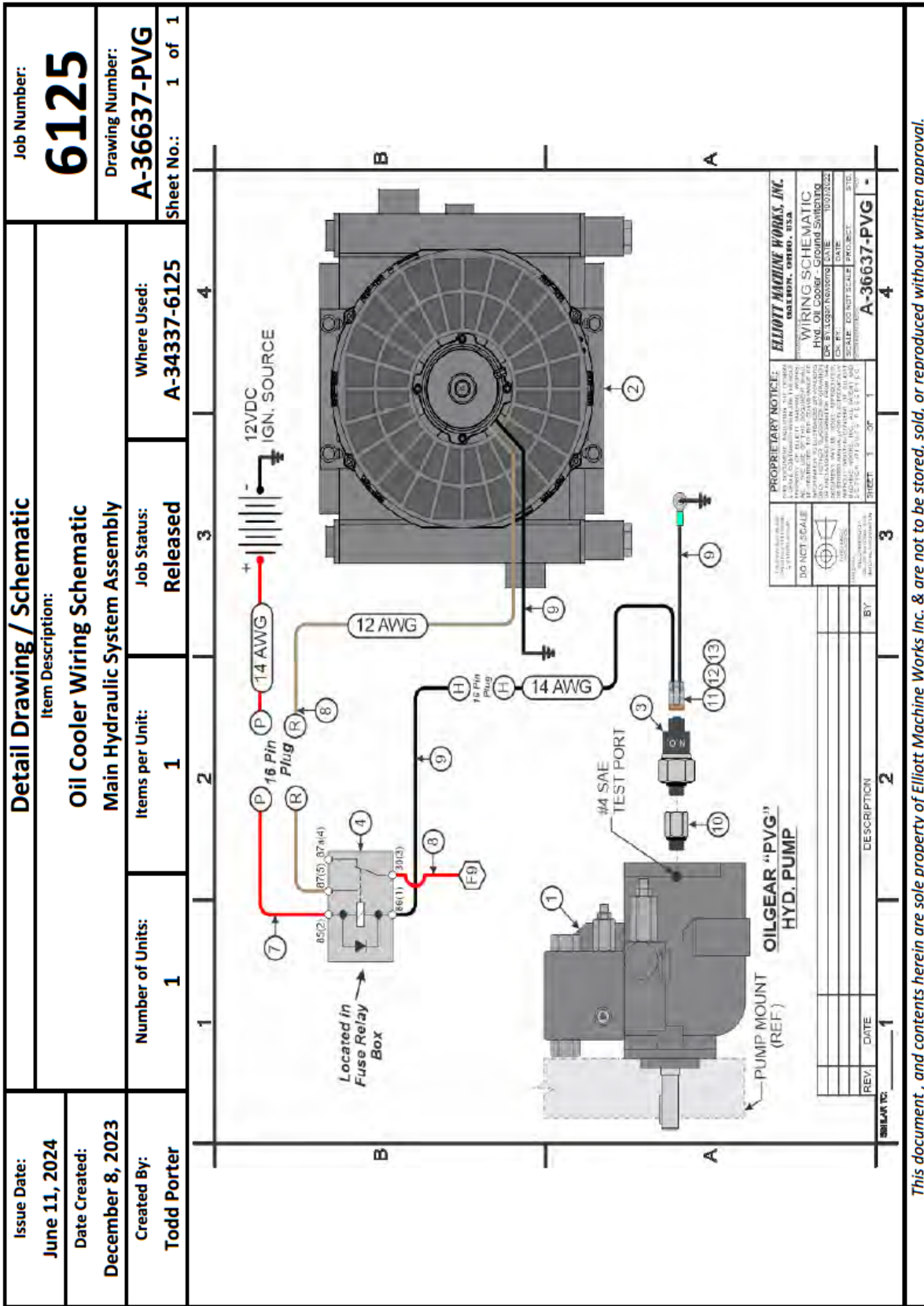
PIN #	WIRE COLOR (AWG)	FUNCTION DESCRIPTION
A	AP3	RED 14 "A" OIL TO PRESSURE SWITCH & APITECH VALVE
B	AP4	WHT 14 "B" OIL TO PRESSURE SWITCH & APITECH VALVE
C	AP5	BLU 14 "C" OIL TO PRESSURE SWITCH & APITECH VALVE
D	AP6	GRN 14 "D" OIL TO PRESSURE SWITCH & APITECH VALVE
E	AD1	YEL 14 "E" OIL TO PRESSURE SWITCH & APITECH VALVE
F		NOT USED
G	F51	PUR 14 COMPRESSOR SWITCH OUT TO FURNAS SWITCH
H	FS2	BLU 14 COMPRESSOR RETURN FROM FURNAS SWITCH
I	AD1	PUR 14 COMPRESSOR TO APITECH VALVE
J		NOT USED
K		NOT USED
L	BLK/WHT	INDICATOR LIGHT IN CAB
M		RED 12 12VDC IN FROM FUSE / RELAY BOX
N	BLK	CHASSIS GROUND (SWITCH LIGHTS)
O	BLK	SWITCH OUT TO INTERIOR LIGHTS
P		NOT USED
Q		NOT USED
R		NOT USED
S		NOT USED

PIN #	WIRE COLOR (AWG)	FUNCTION DESCRIPTION
F1	A4	PUR 14 FUSED POWER TO COMPRESSOR SWITCH (10A)
F2	L4	BLK 14 FUSED POWER TO INTERIOR LIGHT SWITCH (20A)
F3		NOT USED
F4	L	BLK 14 FUSED POWER TO INDICATOR LIGHT IN CAB (5A)
F5		NOT USED
F6		NOT USED
F7	A	RED 14 FUSED POWER TO "A" OIL PRESSURE SWITCH
F8	B	WHT 14 FUSED POWER TO "B" OIL PRESSURE SWITCH
F9	C	BLU 14 FUSED POWER TO "C" OIL PRESSURE SWITCH
F10	D	GRN 14 FUSED POWER TO "D" OIL PRESSURE SWITCH
F11	E	YEL 14 FUSED POWER TO "E" OIL PRESSURE SWITCH
F12		NOT USED

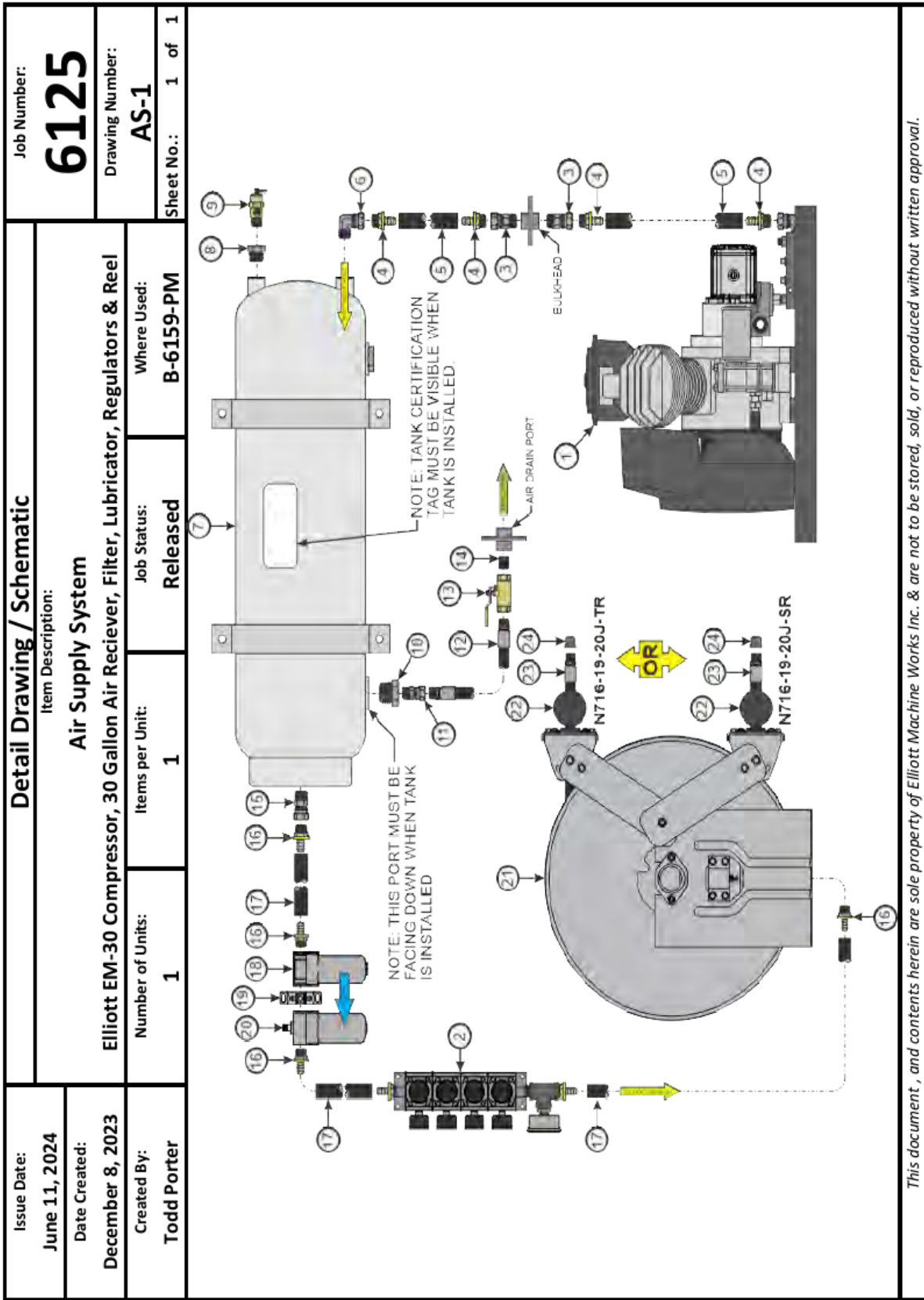
PIN #	WIRE COLOR (AWG)	FUNCTION DESCRIPTION
M4	M3	RED 10 MAIN POWER JUMPER (X2)
M5	F78	RED 12 SWITCHED 12VDC POWER TO FUSE PANEL (MAIN)
X1	N	BLK/WHT 14 CHASSIS GROUND FOR SWITCH LIGHTS
X1	X1	BLK/WHT 14 CHASSIS GROUND JUMPER (SWITCH LIGHTS) (5A)
M4	X2	RED 14 JUMPER WIRE FOR SWITCH LIGHT (MAIN)
A3	X2	PUR 14 JUMPER WIRE FOR SWITCH LIGHT (COMPRESSOR)
L3	X2	BLK 14 JUMPER WIRE FOR SWITCH LIGHT (INT. LIGHTS)



This document, and contents herein are sole property of Elliott Machine Works Inc. & are not to be stored, sold, or reproduced without written approval.



This document, and contents herein are sole property of Elliott Machine Works Inc. & are not to be stored, sold, or reproduced without written approval.



This document, and contents herein are sole property of Elliott Machine Works Inc. & are not to be stored, sold, or reproduced without written approval.

Detail Drawing / Schematic		Job Number: 6125	
Item Description: Air Regulator Stack Assembly		Drawing Number: A-33076-3	
Stack Regulator Unit, Section Gauge, Main Pressure Gauge, Hose Reel Hook-up		Sheet No.: 1 of 1	
Number of Units: 1	Items per Unit: 3	Job Status: Released	Where Used: AS-1
Created By: Todd Porter		Schematic Details	
Issue Date: 07/11/2022		Drawing Number: A-33076-REG-3	
Revision:		Sheet No.: 1 of 1	

Note: O-Ring Cavity must Face the same direction on all End Caps & Sections

REF.

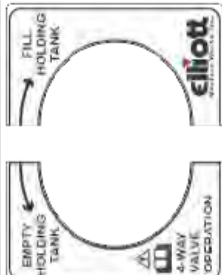
REGULATED PRESSURE FOR OUTLET PORT

END CAP w/ O-RING GROOVE

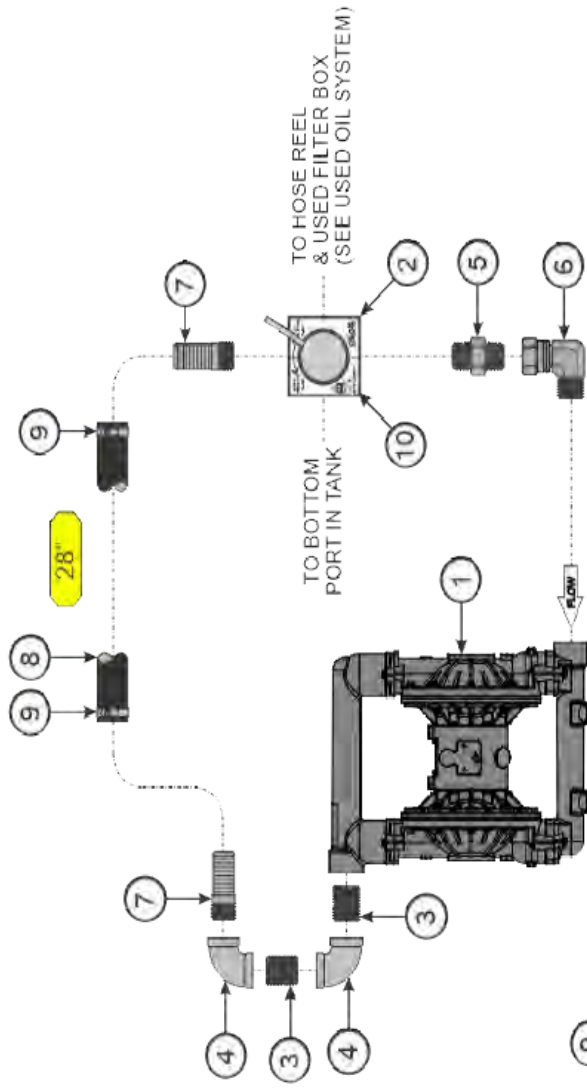
REV	DATE	DESCRIPTION	BY

This document, and contents herein are sole property of Elliott Machine Works Inc. & are not to be stored, sold, or reproduced without written approval.

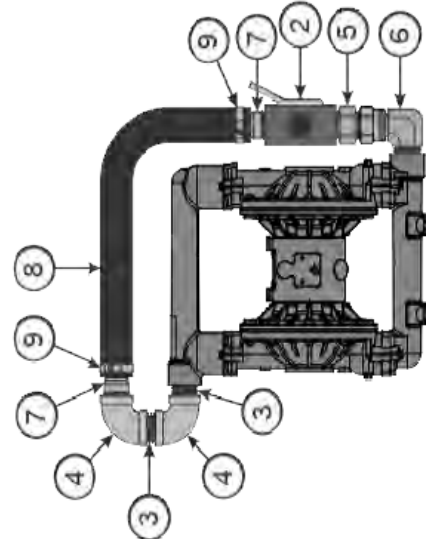
Issue Date: June 11, 2024		Detail Drawing / Schematic		Job Number: 6125	
Date Created: October 27, 2023		Item Description: Diaphragm Pump Assembly Air Operated 1.50" Diaphragm Pump w/ 4 Way Valve		Drawing Number: UOP-1	
Created By: Todd Porter		Number of Units: 1		Job Status: Released	
		Items per Unit: 1		Where Used: UOS-1	
		Sheet No.: 1 of 1			



2 PART DECAL FOR 4-WAY VALVE OPERATION (EMW3960A)

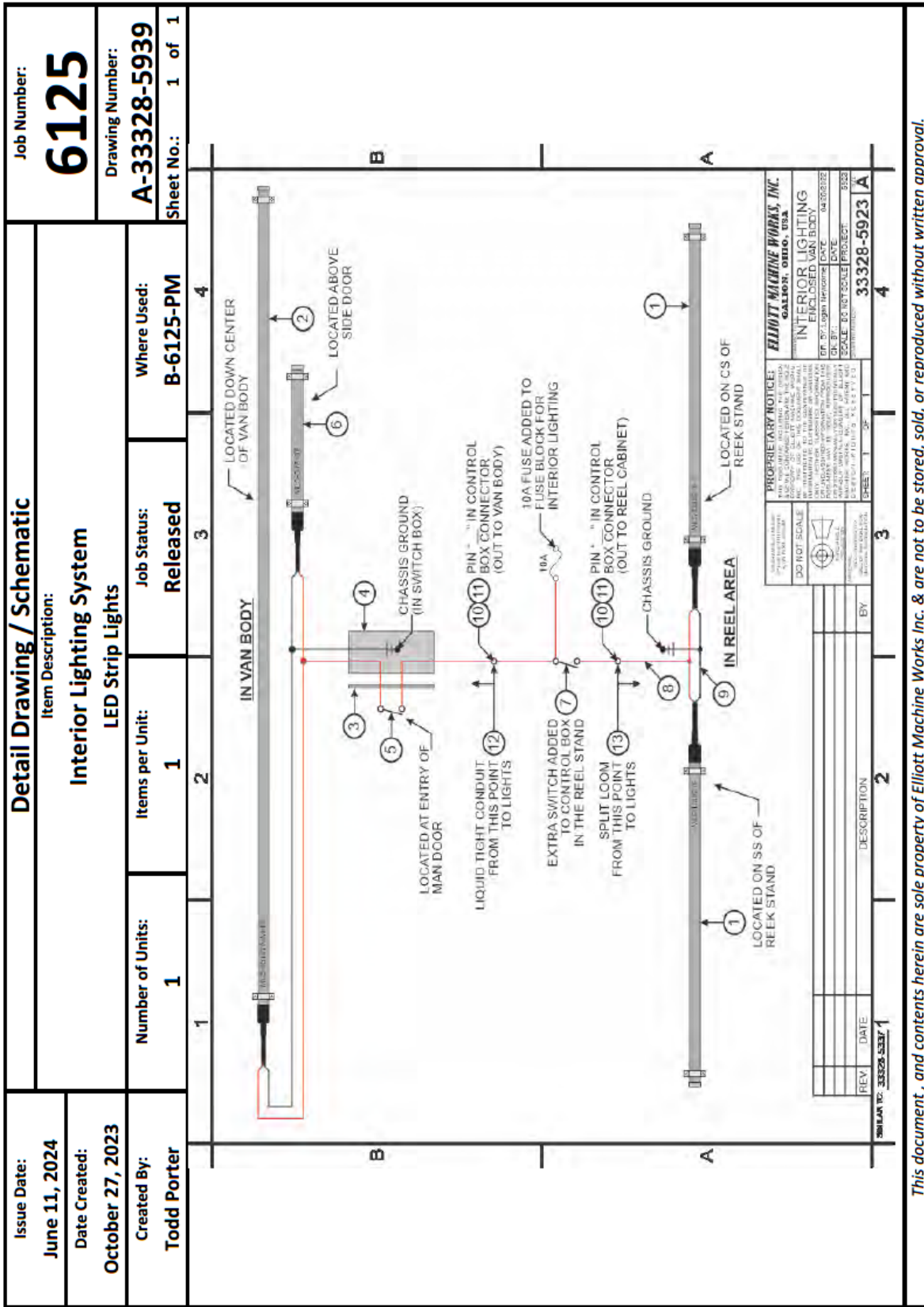


SCHEMATIC VIEW

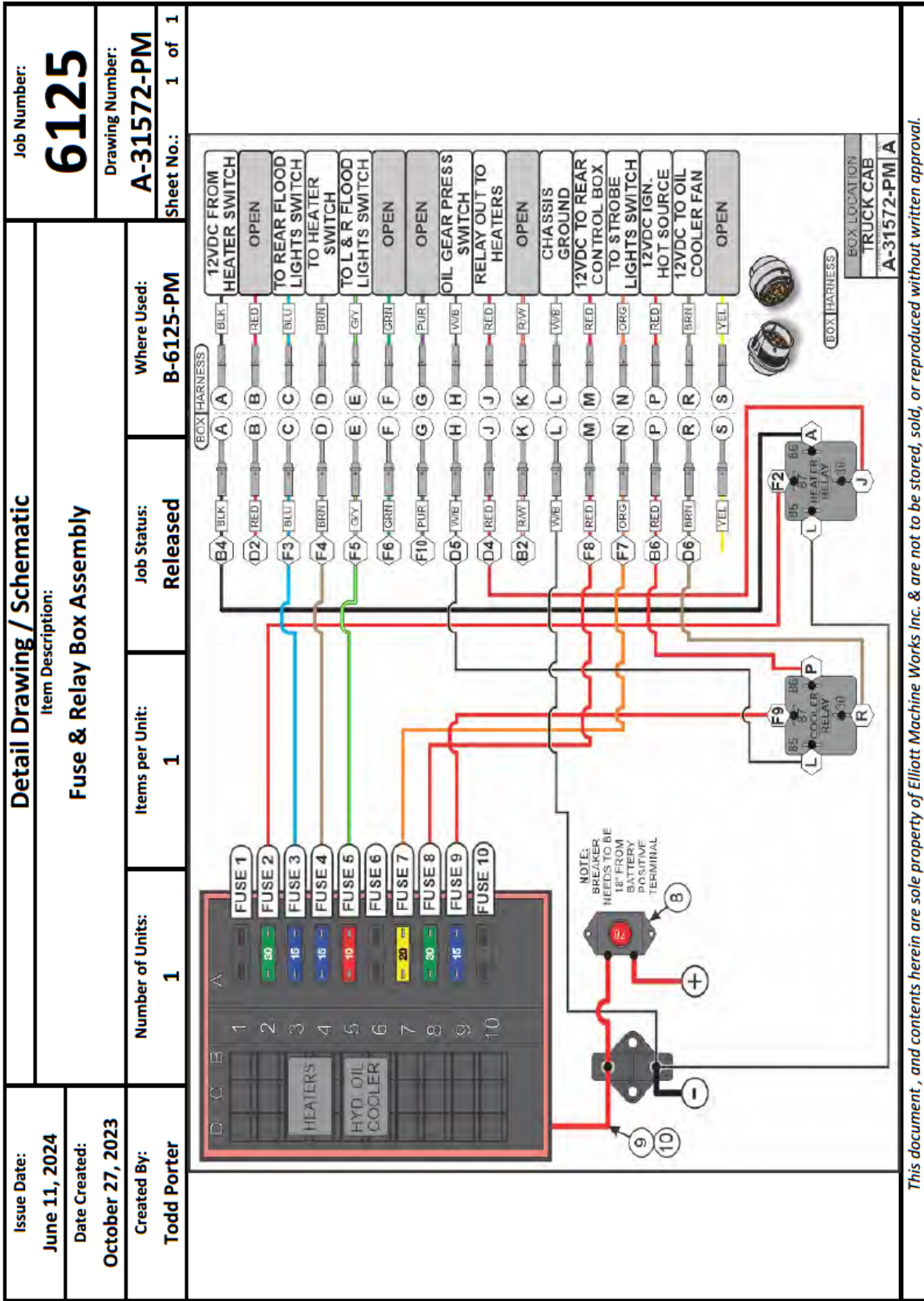


ASSEMBLED VIEW

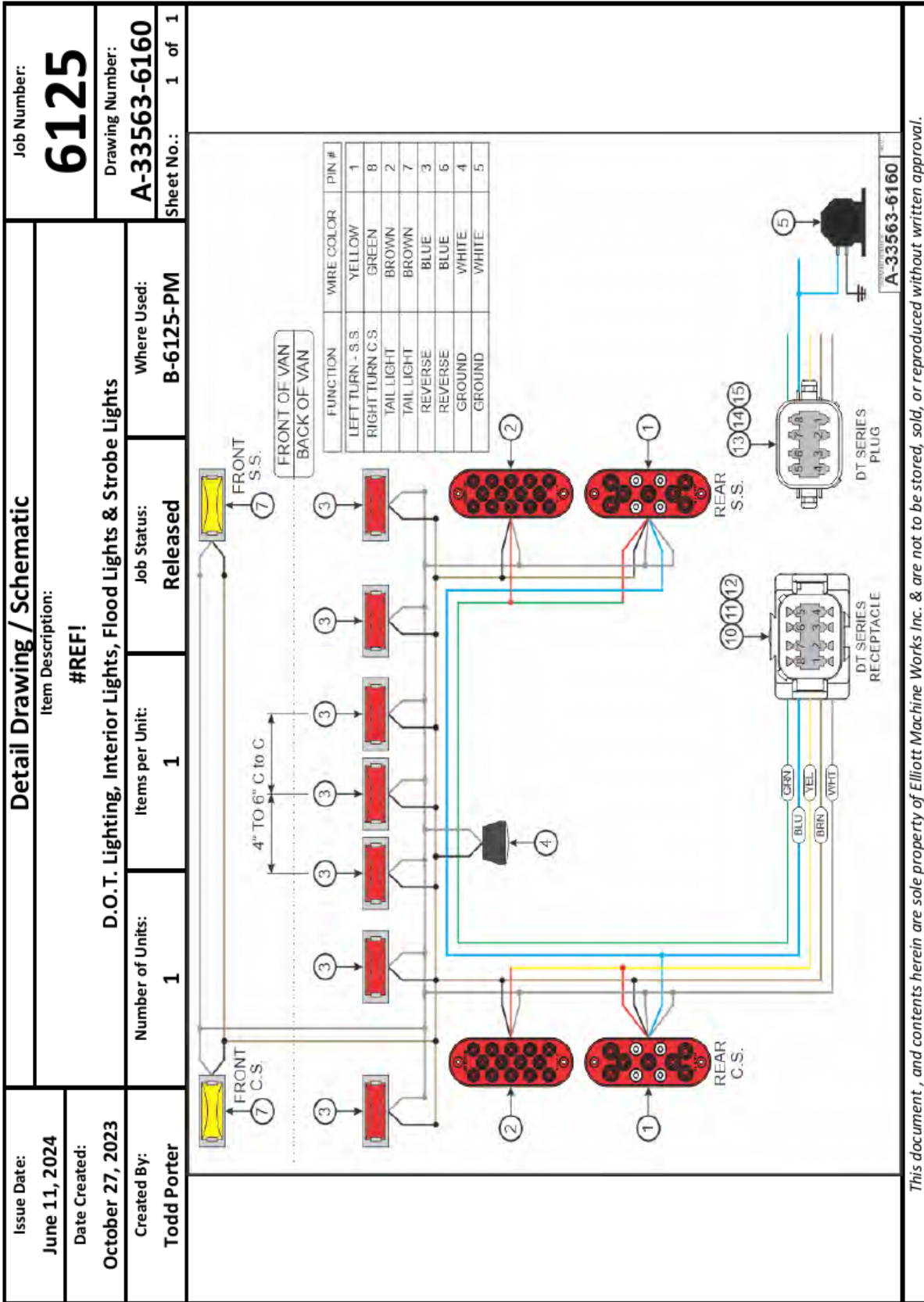
This document, and contents herein are sole property of Elliott Machine Works Inc. & are not to be stored, sold, or reproduced without written approval.



This document, and contents herein are sole property of Elliott Machine Works Inc. & are not to be stored, sold, or reproduced without written approval.



This document, and contents herein are sole property of Elliott Machine Works Inc. & are not to be stored, sold, or reproduced without written approval.



This document, and contents herein are sole property of Elliott Machine Works Inc. & are not to be stored, sold, or reproduced without written approval.

Detail Drawing / Schematic		Job Number: 6125	
Issue Date: June 11, 2024		Drawing Number: A-32011	
Date Created: October 27, 2023		Sheet No.: 1 of 1	
Created By: Todd Porter		Where Used: B-6125-PM	
Item Description: Heating System		Job Status: Released	
120VAC Shore Power			
Number of Units: 1	Items per Unit: 2		

<p>PROPRIETARY NOTICE: ALL INFORMATION CONTAINED HEREIN IS THE PROPERTY OF ELLIOTT MACHINE WORKS, INC. AND IS NOT TO BE REPRODUCED OR TRANSMITTED IN ANY FORM OR BY ANY MEANS, ELECTRONIC OR MECHANICAL, INCLUDING PHOTOCOPYING, RECORDING, OR BY ANY INFORMATION STORAGE AND RETRIEVAL SYSTEM. WITHOUT THE EXPRESS WRITTEN PERMISSION OF ELLIOTT MACHINE WORKS, INC., NO PART OF THIS DOCUMENT IS TO BE REPRODUCED OR TRANSMITTED IN ANY FORM OR BY ANY MEANS, ELECTRONIC OR MECHANICAL, INCLUDING PHOTOCOPYING, RECORDING, OR BY ANY INFORMATION STORAGE AND RETRIEVAL SYSTEM.</p>	<p>ELLIOTT MACHINE WORKS, INC. GALLON, OHIO, USA</p> <p>120VAC Heater Wiring Shore Power Header Installation</p> <p>DR BY: Todd Porter DATE: 05/13/2016</p> <p>SCALE: DO NOT SCALE PROJECT: 303</p>								
<p>DO NOT SCALE</p> <p>REVISIONS:</p> <table border="1" style="width: 100%; border-collapse: collapse;"> <thead> <tr> <th>REV</th> <th>DATE</th> <th>DESCRIPTION</th> <th>BY</th> </tr> </thead> <tbody> <tr> <td>1</td> <td></td> <td></td> <td></td> </tr> </tbody> </table>		REV	DATE	DESCRIPTION	BY	1			
REV	DATE	DESCRIPTION	BY						
1									
SHEET 1 OF 4									

SIMILAR TO: A-33841	1	2	3	4
---------------------	---	---	---	---

This document , and contents herein are sole property of Elliott Machine Works Inc. & are not to be stored, sold, or reproduced without written approval.



SECTION 6

Troubleshooting

PROBLEM	POSSIBLE CAUSE	REMEDIES
Truck cranks with the key switch but will not run.	The theft deterrent disable switch is in the "ON" position (if equipped).	Turn the theft deterrent switch off.
The truck engine runs erratically or stalls when controls are operated.	The idle speed is too slow.	Increase the engine speed.
	The engine is still cold.	Wait until the truck engine is warm.
	The engine needs a tune up.	Call Curry Supply Company for service 800.345.2829.
The tool compartment key will not go into the lock.	Shield is blocking insertion of the key.	Slide shield out of the way with the tip of the key while pushing the key into the lock.
	The lock is full of ice.	Spray lock with de-ice spray.
	The key is the wrong one for the lock.	Use the correct key.
No response from hydraulic controls	The truck engine is not running.	Start the engine.
	PTO is not engaged.	Engage the PTO.
	Low hydraulic oil.	Add hydraulic oil.
	Relief valve is set too low.	Call Curry Supply Company for service 800.345.2829.
	Pinched pressure or return hydraulic line.	Repair or replace.
	Defective hydraulic pump.	Call Curry Supply Company for service 800.345.2829.
	Pressure compensated pump set too low.	Call Curry Supply Company for service 800.345.2829.

Slow hydraulic operations.	Valve spools are not fully open.	Call Curry Supply Company for service 800.345.2829.
	Oil is too heavy or cold.	Replace oil to correct viscosity for operating range temperature.
	Low hydraulic oil.	Add oil.
	System operating pressure or main system relief set too low.	Call Curry Supply Company for service 800.345.2829.
	Dirt or foreign matter in hydraulic system, filters valves, etc....	Call Curry Supply Company for service 800.345.2829.
	Pinched pressure or return hydraulic line.	Repair or replace.
	Engine speed is too low.	Increase engine speed to 1400 RPM. DO NOT EXCEED 1400 RPM.
	Excessive leakage in pump or control valve due to wear.	Call Curry Supply Company for service 800.345.2829.
The hydraulic system is overheating.	The main system relief valve is set too low or is open because of contamination.	Call Curry Supply Company for service 800.345.2829.
	The hydraulic system operating pressure is too high.	Call Curry Supply Company for service 800.345.2829.
	Excessive hydraulic oil flow because of improper PTO ratio or the truck engine is operating at an excessive speed.	Reduce engine speed. If it is still overheating, refer to the manufacturer's service and maintenance manual.
Diaphragm pump cycles at stall or fails to hold pressure at stall. Diaphragm pump will not cycle, or cycles once and stops.	Worn check valve balls, seats or O-rings.	Replace.
	Air valve is stuck or dirty.	Disassemble and clean air valve. Use filtered air.
	Check valve ball severely worn and wedged in seat or manifold.	Replace ball and seat.
	Dispensing valve clogged.	Relieve pressure and clear valve.

Diaphragm Pump operates erratically.	Clogged suction line.	Inspect; clear.
	Sticky or leaking balls.	Clean or replace.
	Diaphragm ruptured.	Replace.
	Restricted exhaust.	Remove restriction.
Air bubbles in hydraulic fluid from the diaphragm pump.	Suction line is loose.	Tighten.
	Diaphragm is ruptured.	Replace.
	Loose inlet manifold, damaged seal between manifold and seat, damaged O-rings.	Tighten manifold bolts or replace seats or O-rings.
	Loose diaphragm shaft bolt.	Tighten or replace.
	Damaged O-ring.	Replace.
Dispensing meter display does not wake up or displays unintelligent characters.	Electronic control is malfunctioning.	Replace electronic control.
	Batteries are depleted within the meter unit.	Replace battery.
Slow or no fluid flow.	Strainer within dispensing meter unit clogged.	Clean or replace strainer.
	Pump pressure is low.	Increase pump pressure.
	Shut off valve is not fully open.	Fully open shut off valve.
	Foreign material is jammed in the meter element.	Call Curry Supply Company for service 800.345.2829.

Section 7

Warranty & Proprietary Information

Curry Supply Company warrants products designed and manufactured by Curry Supply Company to be free from defects in material and workmanship under proper use and maintenance. Products must be installed and operated in accordance with Curry Supply’s written instructions and capacities. All warranty periods will begin on the in-service date as defined in this document. This warranty shall cover the following Curry Supply Products:

	1 Year	2 Years	Variable
On Road Water / Flatbed / Crash Attenuator / Lube Skid			
Curry Manufactured Components		✓	
Paint Coverage on Curry Manufactured Parts	✓		
Parts	✓		
Repair Labor	✓		
Off Road / Dump / Industrial Carrier / Vacuum / Winch / Railroad			
Tank	✓		
Tank Exterior Paint Coverage	✓		
Parts	✓		
Repair Labor	✓		
Mechanics			
Body (Refer to Manufacture Warranty)			✓
Crane (Refer to Manufacture Warranty))			✓
Paint Coverage (Refer to Manufacture Warranty)			✓
Parts (Refer to Manufacture Warranty)			✓
Repair Labor (Refer to Manufacture Warranty)			✓
Lube			
Body (Refer to Manufacture Warranty)	✓		
Tanks (Refer to Manufacture Warranty)			✓
Parts	✓		
Repair Labor	✓		
Paint Coverage	✓		
Utility Lift			
Body (Refer to Manufacture Warranty)			✓
Lift (Axion)			✓
Parts	✓		
Repair Labor	✓		
Body Paint Coverage	✓		

Definitions

Curry Supply Manufactured Components/Structures – Includes any structural weldment or load bearing support structure manufactured by Curry Supply Company.

Rust Through on Curry Supply Components/Structures – Rust Through is defined as a hole in the metal caused by corrosion. Excluded is corrosion caused by external caustics, including but not limited to improper cleaning material, road salt and other chemicals left on the structure for extended periods of time.

Paint Coverage on Curry Supply Manufactured Parts – Curry Supply guarantees that exterior paint will not fail in terms of adhesion, blistering or unreasonable loss of color or gloss for a 1-year period. Excluded is damage such as chips, dents, scratches, tank interior coating, and corrosion due to caustic chemicals (e.g. Brine Solution / Leachate) and dirt build-up. Regular cleaning and maintenance of the product to remove external factors is expected to keep this warranty in force.

Vendor Supplied Components/Structures – Products purchased by Curry Supply from outside vendors. These items shall be covered by the warranty offered by the respective manufacturer only. Curry Supply does not obligate itself to any such warranty.

Warranty Process

Curry Supply's obligation under this warranty is limited to, and the sole remedy for any such defect shall be the repair and/or replacement (at Curry Supply's option) of the unaltered part and/or component in question. Curry Supply after-sales service personnel must be notified by telephone, email, or letter of any warranty applicable damage within fourteen (14) days of its occurrence. If possible, Curry Supply will ship the replacement part within 24 hours of notification by the most economical, yet expedient, means possible. Expedited freight delivery will be at the expense of the owner.

Warranty claims must be submitted and shall be processed in accordance with Curry Supply's established warranty claim procedure. Curry Supply after-sales service personnel must be contacted prior to any warranty claim. A return materials authorization (RMA) may be issued to the claiming party prior to the return of warranty parts. Parts returned without prior authorization will not be recognized for warranty consideration. All damaged parts must be returned to Curry Supply freight prepaid; freight collect returns will be refused. Freight reimbursement of returned parts will be considered as part of the warranty claim.

14-Jan-25

Warranty Repair

Warranty service will be performed by any Curry Supply factory, Curry Supply mobile technician, Curry Supply authorized service partner, or by the affected owner. At the time of requesting warranty service, Curry Supply after-sales service personnel will verify date of delivery of the product. The owner shall be obligated to pay for any overtime labor requested of the servicing company by the owner, any field service call charges, and any towing and/or transportation charges associated with moving the equipment to the designated repair/service provider.

All obligations of Curry Supply and its service providers shall be voided if someone other than an authorized Curry Supply provider performs other than routine maintenance service without prior written or verbal approval from Curry Supply. In the case repair work is performed on a Curry Supply-manufactured product, original Curry Supply parts must be used to keep the warranty in force. The warranty may also be voided if the product is modified or altered in any way not approved, in writing, by Curry Supply.

Warranty Limitations/Responsibilities

This warranty covers only defective material and workmanship. It does not cover depreciation or damage caused by normal wear and tear, accident, mishap, untrained operators, or improper or unintended use. The owner has the obligation of performing routine care and maintenance duties as stated in Curry Supply's written instructions, recommendations, and specifications. Any damage resulting from owner/operator failure to perform such duties shall void the coverage of this warranty. The owner will pay the cost of labor and supplies associated with routine maintenance.

The only remedies the owner has in connection with the breach or performance of any warranty on the Curry Supply product specified are those set above. In no event will Curry Supply, or any company affiliated with Curry Supply, be liable for business interruptions, costs of delay, or for any special, indirect, incidental, or consequential costs or damages. Such costs may include, but are not limited to, loss of time, loss of revenue, loss of use, wages, salaries, commissions, lodging, meals, towing, hydraulic fluid, or any other incidental cost.

All products purchased by Curry Supply from outside vendors shall be covered by the warranty offered by that respective manufacturer only. Curry Supply does not participate in, or obligate itself to, any such warranty.

14-Jan-25

Curry Supply reserves the right to make changes in design or improvement upon its products without imposing upon itself the same upon its products theretofore manufactured.

This warranty will apply to all Curry Supply manufactured components/structures and upfit workmanship shipped from Curry Supply's factory. The warranty is for the use of the original owner only and is not transferable without prior written permission from Curry Supply.

Curry Supply After-Sales Contact Information:

Phone: (800) 345-2829

Email: service@currysupply.com

Mailing Address: 1477 DeGol Industrial Drive, Hollidaysburg, PA 16648

THIS WARRANTY IS EXPRESSLY IN LIEU OF ANY OTHER WARRANTIES, EXPRESS OR IMPLIED, INCLUDING ANY WARRANTY OF MERCHANTABILITY OR FITNESS FOR A PARTICULAR PURPOSE. REMEDIES UNDER THIS WARRANTY ARE LIMITED TO THE PROVISION OF MATERIAL AND SERVICES, AS SPECIFIED HEREIN. CURRY SUPPLY COMPANY IS NOT RESPONSIBLE FOR INCIDENTAL OR CONSEQUENTIAL DAMAGES.

EXCEPT AS STATED, THERE IS NO WARRANTY, EXPRESS OR IMPLIED, IN CONNECTION WITH THE DESIGN, MANUFACTURE, SALE OR USE OF THE MACHINERY, ACCESSORIES, EQUIPMENT AND PARTS SOLD BY CURRY SUPPLY CO. CURRY SUPPLY COMPANY'S LIABILITY ON ITS WARRANTY SHALL IN NO EVENT EXCEED THE COST OF THE ITEM OF SALE.



For technical help or parts, please have the serial number available and call our customer service 800.345.2829