

8-Jan-25

# Lube Truck Mini PM Service Schematics

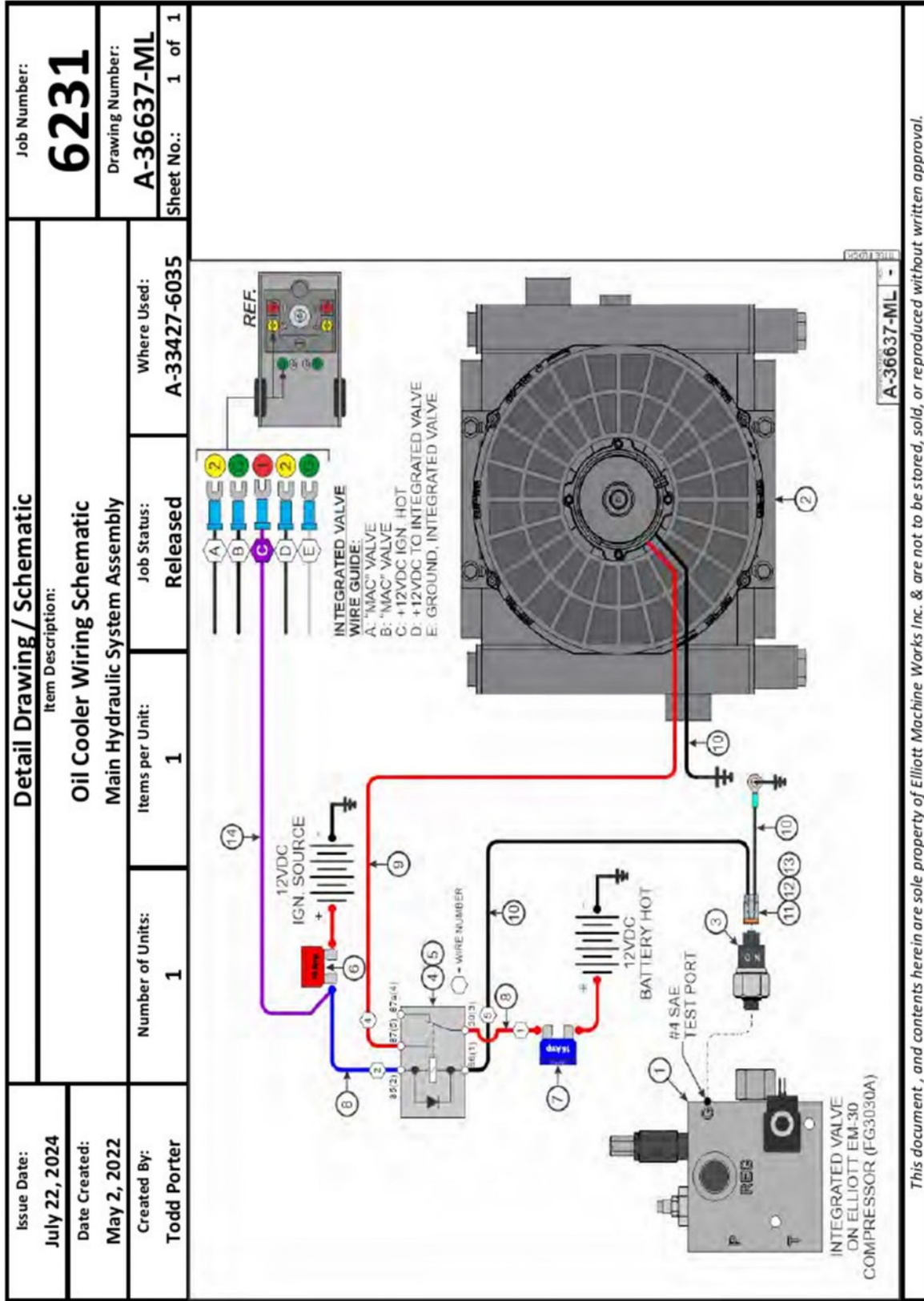
---

<a href="#">Air Supply System SCH1-1</a>	<a href="#">Page 2</a>
<a href="#">Oil Cooler Wiring SCH2-1</a>	<a href="#">Page 3</a>
<a href="#">Hydraulic System SCH3-1</a>	<a href="#">Page 4</a>
<a href="#">Air Regulator Stack SCH4-1</a>	<a href="#">Page 5</a>
<a href="#">M.P. Oil System SCH5-1</a>	<a href="#">Page 6</a>
<a href="#">Chassis System (Grease) SCH6-1</a>	<a href="#">Page 7</a>
<a href="#">Anti-Freeze System SCH7-1</a>	<a href="#">Page 8</a>
<a href="#">Used Oil Recovery System SCH8-1</a>	<a href="#">Page 9</a>
<a href="#">Diaphragm Pump Assembly SCH9-1</a>	<a href="#">Page 10</a>
<a href="#">Reel Cabinet Wiring SCH10-1</a>	<a href="#">Page 11</a>

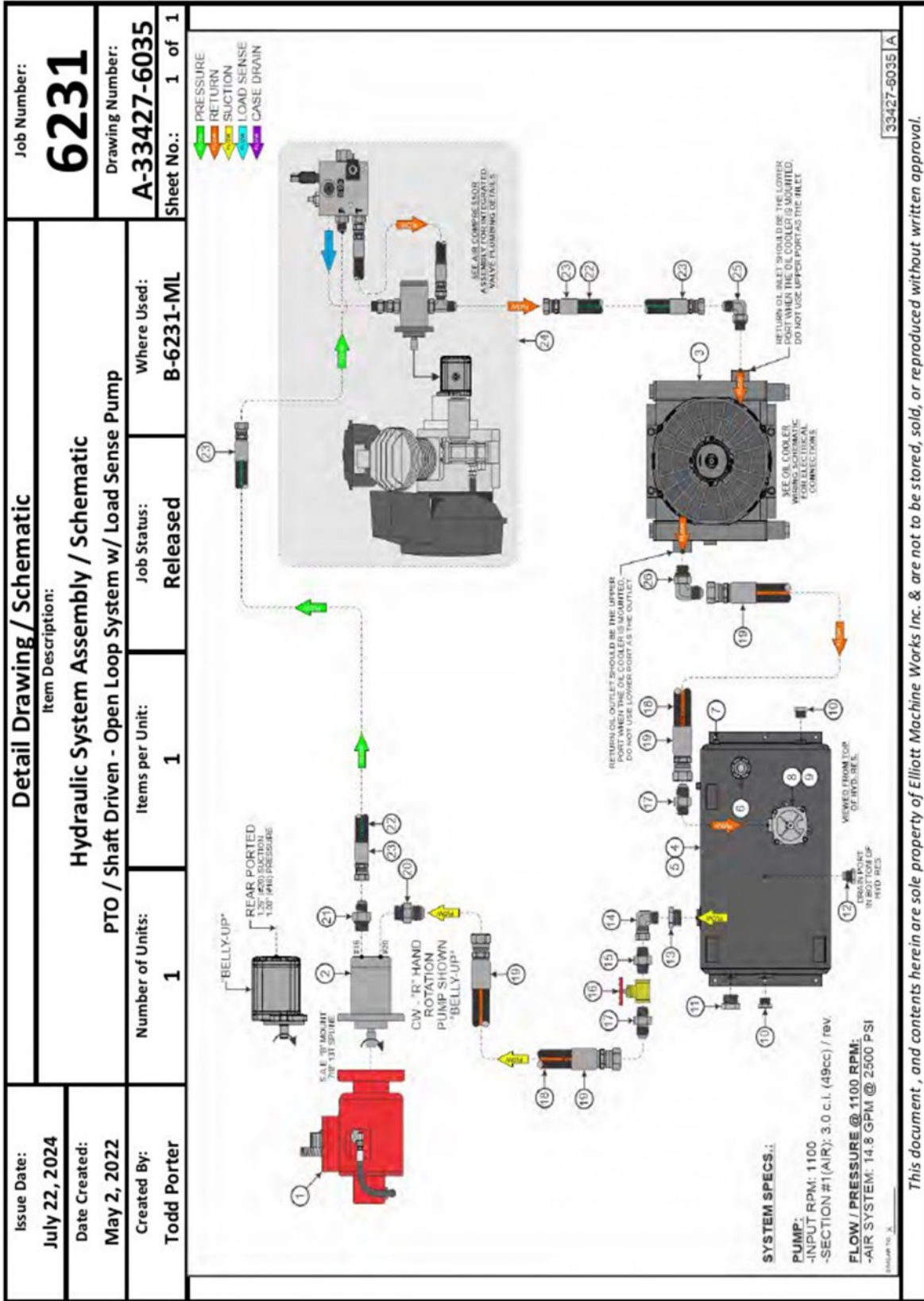
**CAUTION**

PLEASE CONTACT CURRY SUPPLY COMPANY BEFORE ATTEMPTING ANY CHANGES TO THE ELECTRICAL SYSTEMS. DOING SO MAY CAUSE EQUIPMENT DAMAGE OR VOID WARRANTY.

<p>Issue Date: <b>July 22, 2024</b></p>	<p><b>Detail Drawing / Schematic</b></p>			<p>Job Number: <b>6231</b></p>
<p>Date Created: <b>May 2, 2022</b></p>	<p>Item Description: <b>Air Supply System</b></p>			<p>Drawing Number: <b>AS-ML</b></p>
<p>Created By: <b>Todd Porter</b></p>	<p>Number of Units: <b>1</b></p>	<p>Items per Unit: <b>1</b></p>	<p>Job Status: <b>Released</b></p>	<p>Where Used: <b>B-6231-ML</b></p>
<p>Sheet No.: <b>1</b> of <b>1</b></p> <p>NOTE: TANK CERTIFICATION TAG MUST BE VISIBLE WHEN TANK IS INSTALLED</p> <p>AIR DRAIN POINT</p>				
<p style="text-align: right;">AS-ML</p> <p style="text-align: center;"><i>This document, and contents herein are sole property of Elliott Machine Works Inc. &amp; are not to be stored, sold, or reproduced without written approval.</i></p>				



This document, and contents herein are sole property of Elliott Machine Works Inc. & are not to be stored, sold, or reproduced without written approval.



This document, and contents herein are sole property of Elliott Machine Works Inc. & are not to be stored, sold, or reproduced without written approval.



<b>Issue Date:</b> July 22, 2024	<b>Detail Drawing / Schematic</b>			<b>Job Number:</b> <b>6231</b>
<b>Date Created:</b> May 2, 2022	<b>Item Description:</b> <b>Air Regulator Stack Assembly</b>			<b>Drawing Number:</b> A-33076-4
<b>Created By:</b> Todd Porter	<b>Number of Units:</b> 1	<b>Items per Unit:</b> 1	<b>Job Status:</b> Released	<b>Where Used:</b> AS-ML
<b>Issue Date:</b> 07/11/2022		<b>Sheet No.:</b> 1 of 1		
<b>Revision:</b>		<b>Drawing Number:</b> A-33076-REG-4		
		<b>Sheet No.:</b> 1 of 1		

**Schematic Details**

**Air Regulator Assembly w/ Gauge and Hose Nipple**

**EXPLODED VIEW**

**Note: O-Ring Cavity must Face the same direction on all End Caps & Sections**

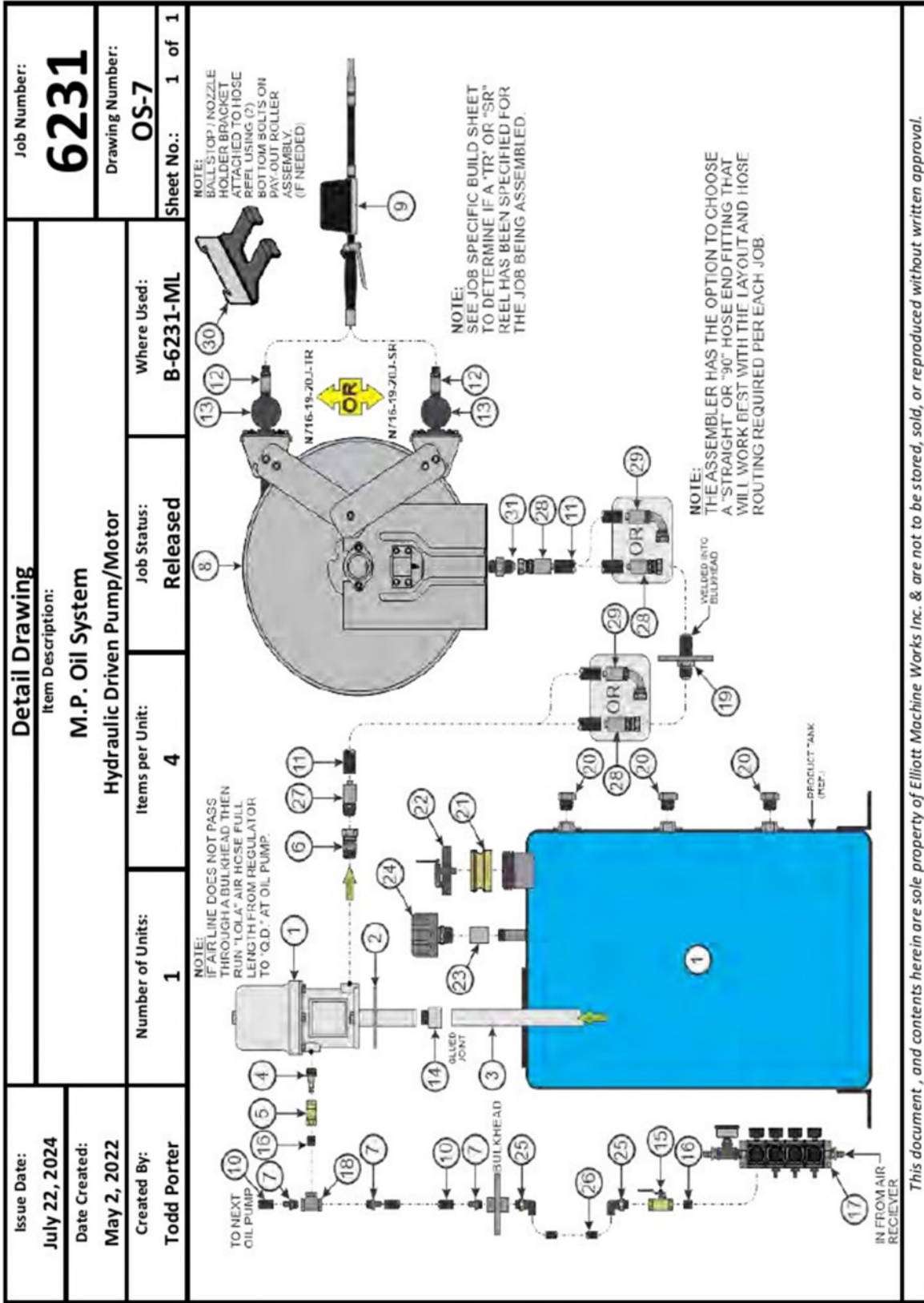
**REF.**

**REGULATED OUTPUT PORT**

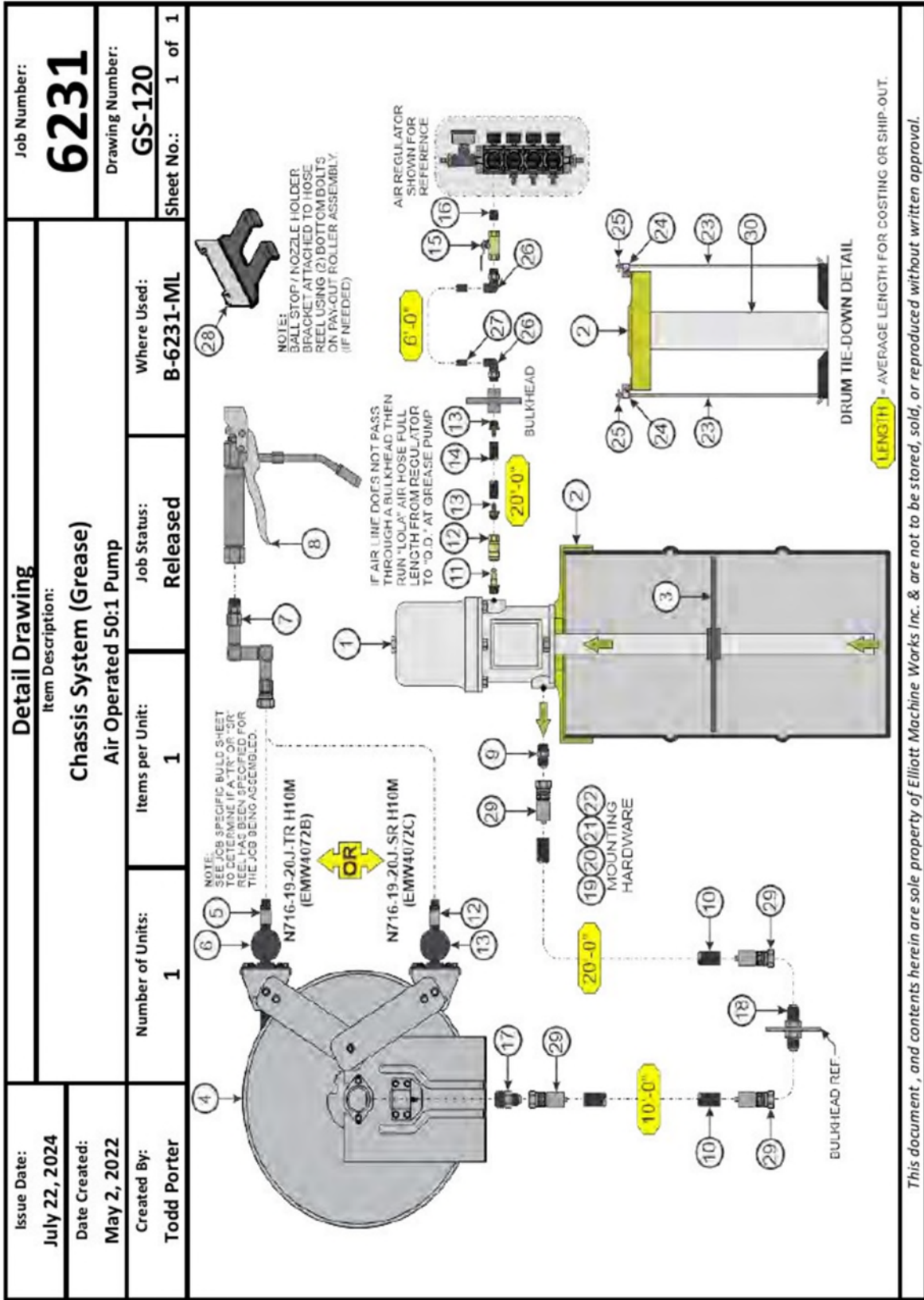
**END CAP w/ O-RING GROOVE**

REV	DATE	DESCRIPTION	BY

This document, and contents herein are sole property of Elliott Machine Works Inc. & are not to be stored, sold, or reproduced without written approval.

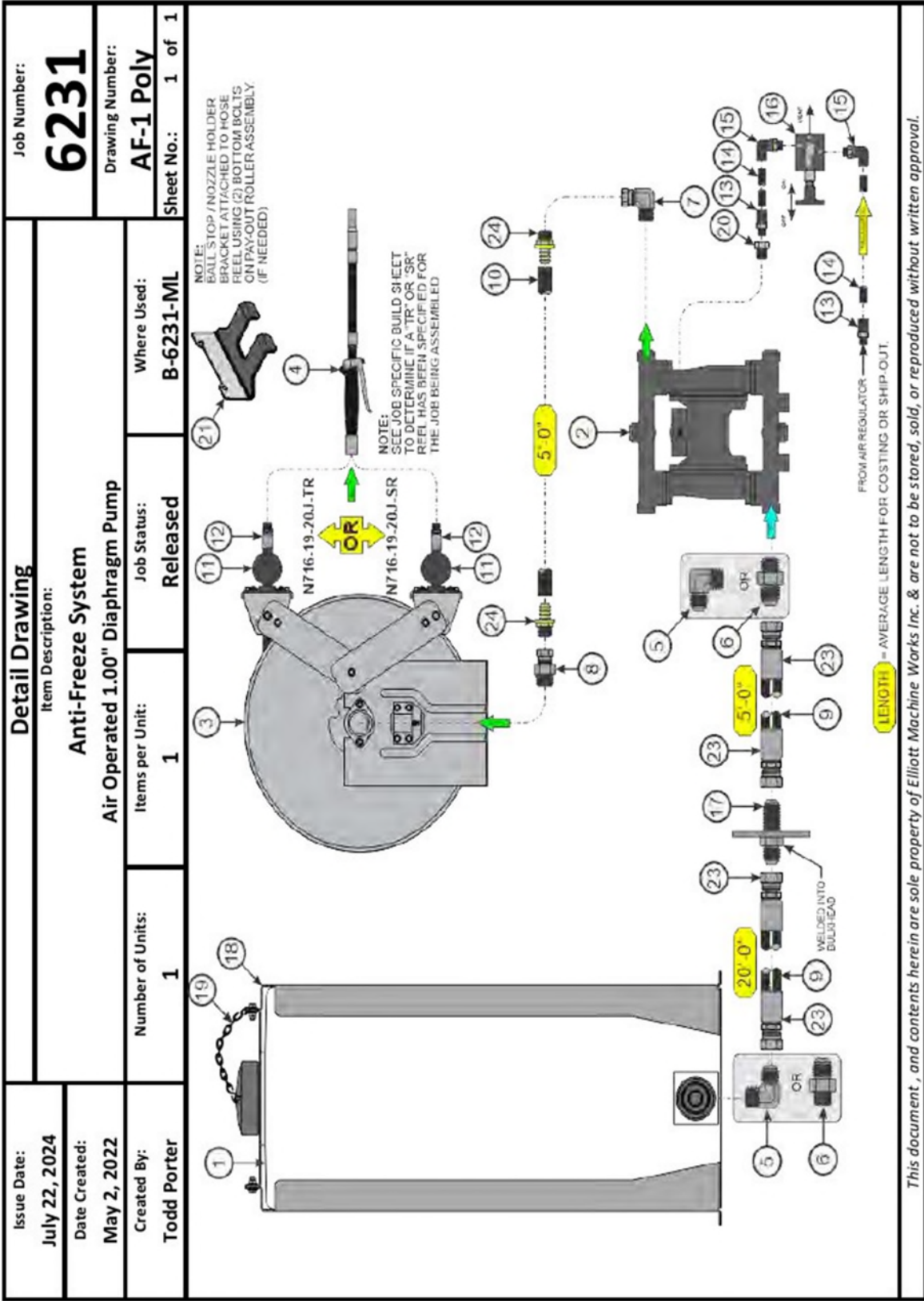


This document, and contents herein are sole property of Elliott Machine Works Inc. & are not to be stored, sold, or reproduced without written approval.



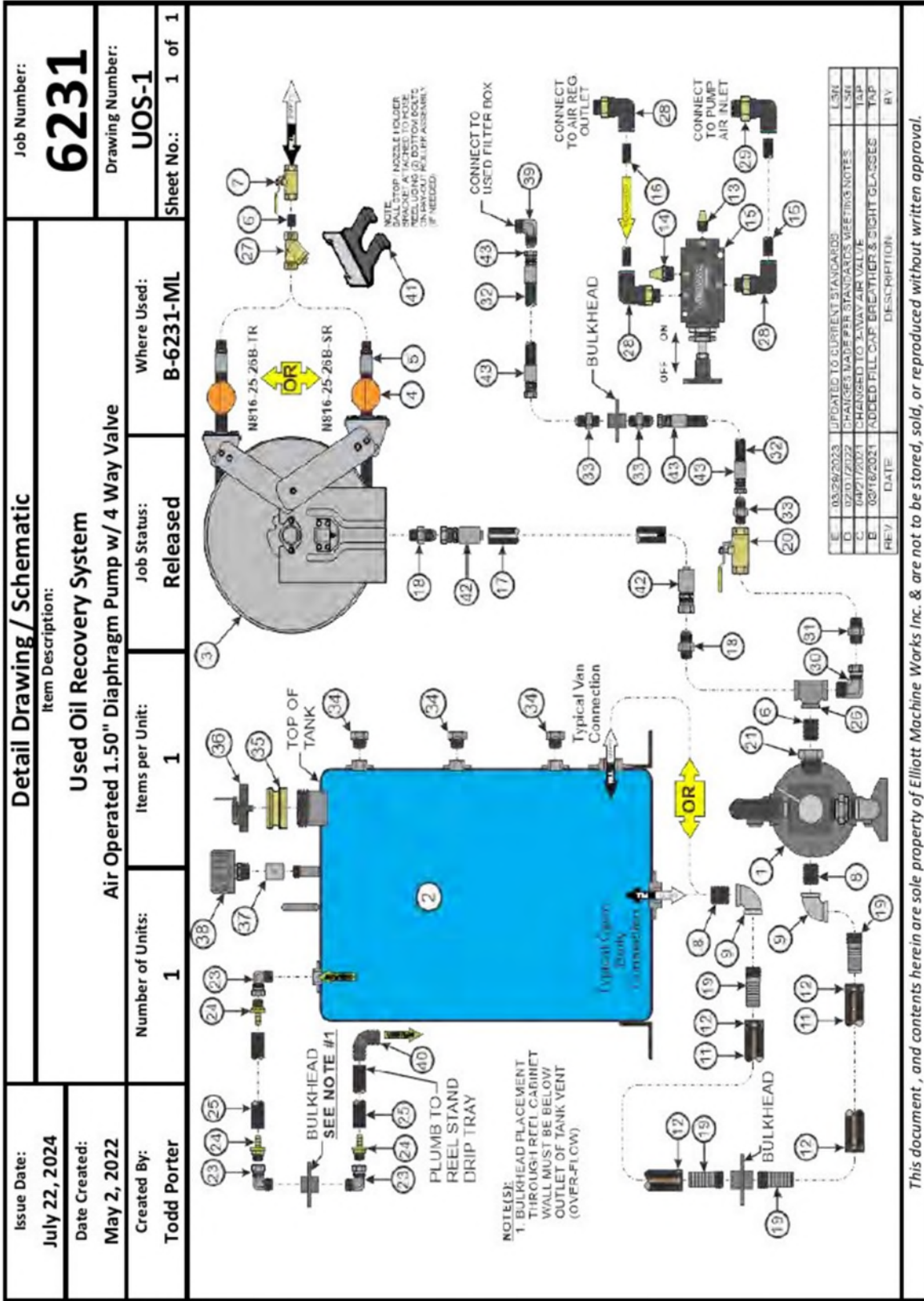
This document, and contents herein are sole property of Elliott Machine Works Inc. & are not to be stored, sold, or reproduced without written approval.





This document, and contents herein are sole property of Elliott Machine Works Inc. & are not to be stored, sold, or reproduced without written approval.

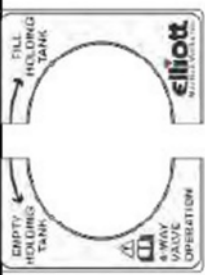




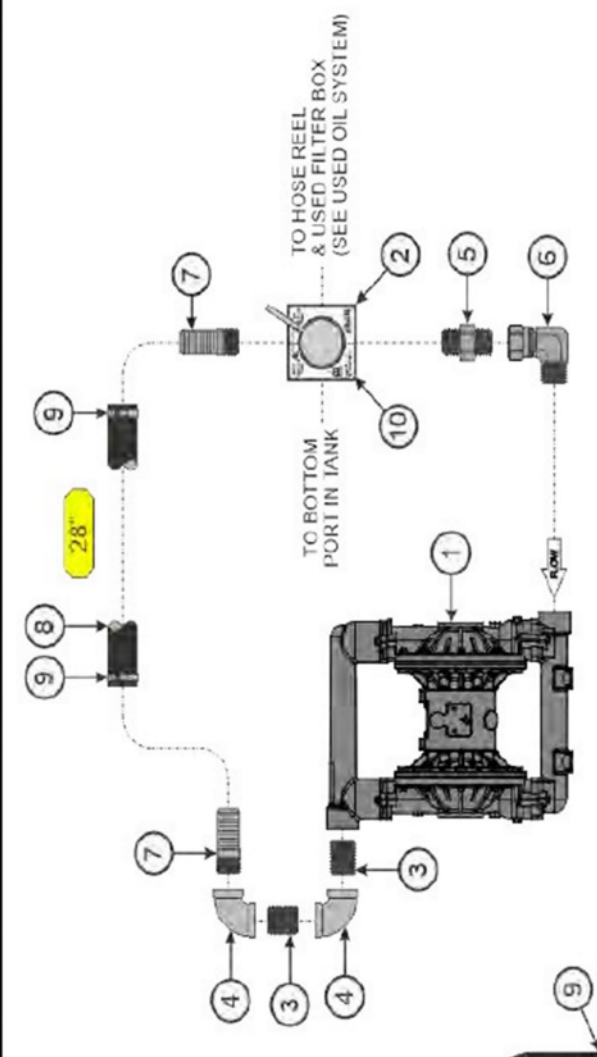
This document, and contents herein are sole property of Elliott Machine Works Inc. & are not to be stored, sold, or reproduced without written approval.

<b>Detail Drawing / Schematic</b>		Job Number: <b>6231</b>	
Item Description: <b>Diaphragm Pump Assembly</b>		Drawing Number: <b>UOP-1</b>	
Air Operated 1.50" Diaphragm Pump w/ 4 Way Valve		Sheet No.: 1 of 1	
Issue Date: July 22, 2024	Number of Units: 1	Job Status: Released	Where Used: UOS-1
Date Created: May 2, 2022	Items per Unit: 1		
Created By: Todd Porter			

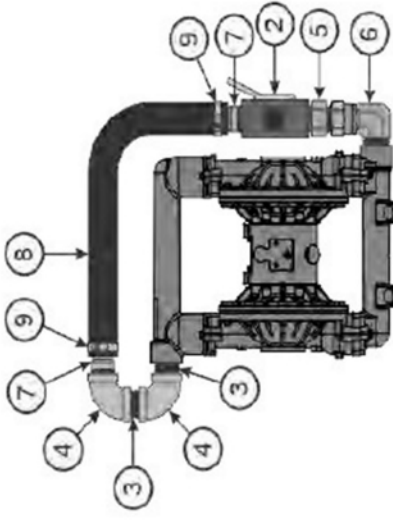


2 PART DECAL FOR 4-WAY VALVE OPERATION (EMW3960A)



**SCHEMATIC VIEW**

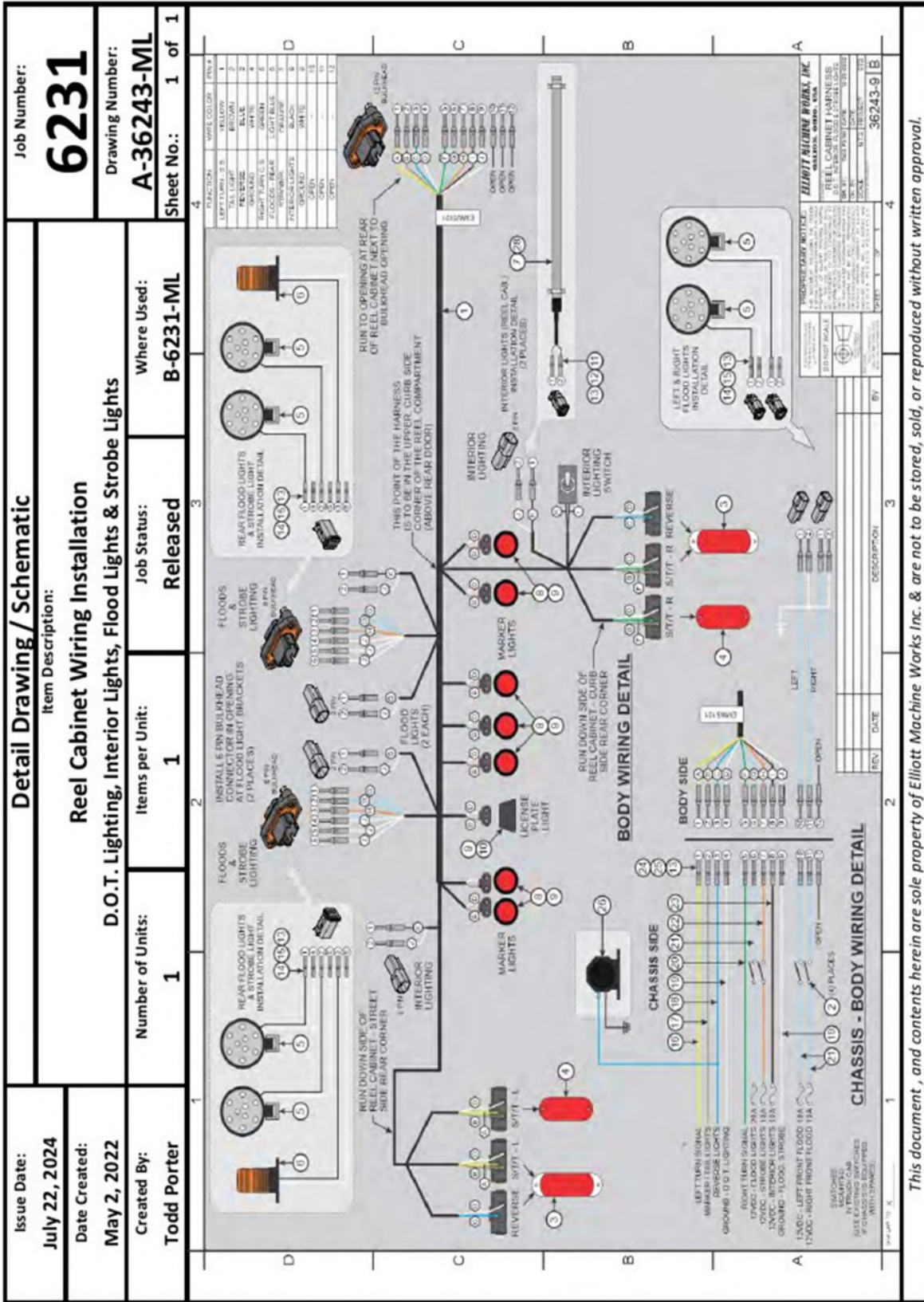


**ASSEMBLED VIEW**

REV	DATE	DESCRIPTION	BY

This document, and contents herein are sole property of Elliott Machine Works Inc. & are not to be stored, sold, or reproduced without written approval.



This document, and contents herein are sale property of Elliott Machine Works Inc. & are not to be stored, sold, or reproduced without written approval.