



Operator Manual

Lube Truck Mini PM Service



Curry Supply Co., 1477 Degol Industrial Drive, Hollidaysburg, PA 16648

YOUR JOBS. OUR TRUCKS.



TABLE OF CONTENTS

Sections

Introduction & Safety Messages.....	3
System Descriptions.....	6
Normal Operations.....	15
Maintenance and Lubrication.....	23
Schematics.....	26
Troubleshooting.....	37
Warranty & Proprietary Information.....	40

SECTION 1

Introduction & Safety Messages

CONTACT US

Curry Supply Company

1477 DeGol Industrial Drive, Hollidaysburg, PA 16648

service@currysupply.com CurrySupply.com

Parts 800.567.5127

Warranty Service 800.345.2829

MANUAL USAGE

This Operators Manual contains information to safely operate more than (1) configuration of "Curry Supply Mini PM Service Lube Trucks". The parts shown may not reflect the exact configuration on your truck. "Custom" style trucks may have parts not listed. If your system is not covered in this manual, please contact Curry Supply Co. Support at 800.345.2829 or service@currysupply.com.

All personnel working on or operating the machine must become familiar with the following safety messages.

Due to the nature of these processes, ensure that all safety information, warnings, and instructions are read and understood before any operation or maintenance procedures are performed.

This manual does not supersede any local, state, or federal laws.

SAFETY MESSAGES

The following definitions are found throughout this manual and apply as follows:

WARNING

OPERATING PROCEDURES AND TECHNIQUES COULD RESULT IN PERSONAL INJURY OR LOSS OF LIFE IF NOT FOLLOWED CORRECTLY.

CAUTION


OPERATING PROCEDURES AND TECHNIQUES WHICH COULD RESULT IN DAMAGE TO EQUIPMENT IF NOT FOLLOWED CORRECTLY.

NOTE

OPERATING PROCEDURES AND TECHNIQUES THAT ARE CONSIDERED ESSENTIAL TO EMPHASIZE.


WARNING

IMPROPER USE OF EQUIPMENT
COULD CAUSE SERIOUS INJURY OR
DEATH. PLEASE READ AND
UNDERSTAND ALL INSTRUCTIONS.




WARNING

WHEN OPERATING OR WORKING
ON THE UNIT, KEEP HANDS AND
BODY PARTS CLEAR OF PINCH
POINTS.




WARNING

CONTACT WITH LIVE
ELECTRICAL CIRCUITS COULD
DAMAGE EQUIPMENT OR CAUSE
INJURY.




WARNING

MOVING PARTS CAN CRUSH
AND CUT. KEEP HANDS, FEET,
HAIR, AND LOOSE CLOTHING
AWAY FROM MOVING PARTS.



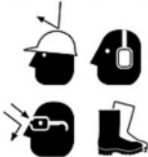
CAUTION

ADVERSE WEATHER CONDITIONS
CAN CAUSE EQUIPMENT DAMAGE.
WHENEVER POSSIBLE, PERFORM
MAINTENANCE INDOORS.




WARNING

ALWAYS WEAR THE PROPER PPE
WHILE OPERATING THE UNIT.




WARNING

DO NOT OPERATE THE UNIT WHILE
INTOXICATED OR EXTREMELY
EXHAUSTED.




WARNING

DO NOT WALK ON TOP OF THE
VEHICLE. FALLING FROM
VEHICLE CAN RESULT IN
SERIOUS INJURY.




CAUTION

DRAIN ALL WATER DAILY DURING
FREEZING TEMPERATURES.
FREEZING WATER CAN RESULT IN
DAMAGE TO EQUIPMENT.




WARNING

THE VEHICLE IS EQUIPPED WITH A
BACK-UP ALARM. ALARM MUST
SOUND WHEN OPERATING THIS
VEHICLE IN REVERSE.




WARNING

TOXIC FLUIDS OR FUMES CAN CAUSE
SERIOUS INJURY OR DEATH IF
SPLASHED IN THE EYES OR ON SKIN,
INHALED, OR SWALLED.



WARNING

ALWAYS WEAR YOUR SAFETY
BELT WHILE DRIVING THE VEHICLE.
IF VEHICLE TIPS, STAY BUCKLED
AND INSIDE OF CAB AREA.





SECTION 2

System Descriptions

SIDE VIEW OF TRUCK



REAR VIEW OF TRUCK



FRONT VIEW OF TRUCK



The truck shown in the pictures has an Elliot body on a Chevrolet chassis. This Operator's Manual provides information on how to safely operate more than one version of the "Curry Supply Company Mini PM Service Lube Truck." The truck shown may not exactly match your truck's configuration. "Custom" trucks may have different parts that aren't listed here. If your system isn't covered in this manual, please contact Curry Supply Co. Support at 800-345-2829 or service@currysupply.com.

EQUIPMENT

Trucks are manufactured with various equipment combinations. Find more information about these components by clicking the links in the following table. If unsuccessful finding the information needed, call Curry Supply Company at 1-800-345-2829.

Equipment	Manufacturer	Web Link
Truck Body/Tool Storage	Supreme by Wabash International LLC.	Spartan Service Truck Body
	Elliott Machine Works, Inc.	Mini Lube Unit *(password protected - see note below)
Power Take Off (PTO)	Parker Hannifin Corporation	200_231_236_238_270_271_272_282_800_852_885 Series
Dispensing Meter	Graco Inc.	EM8_EM20_IM20
Dispensing Valve		SDV15_XDV20
Diaphragm Pump		Husky 1590
		Husky 1050A
Piston Pump		Fire-Ball 300
Lube Equipment – Couplers, Adapters, Nozzles & Z-Swivels		Lube Equipment
Grease Dispense Valve		Proshot 243446
Reels	Hannay Reels, Inc.	N700 Series
		N800 Series

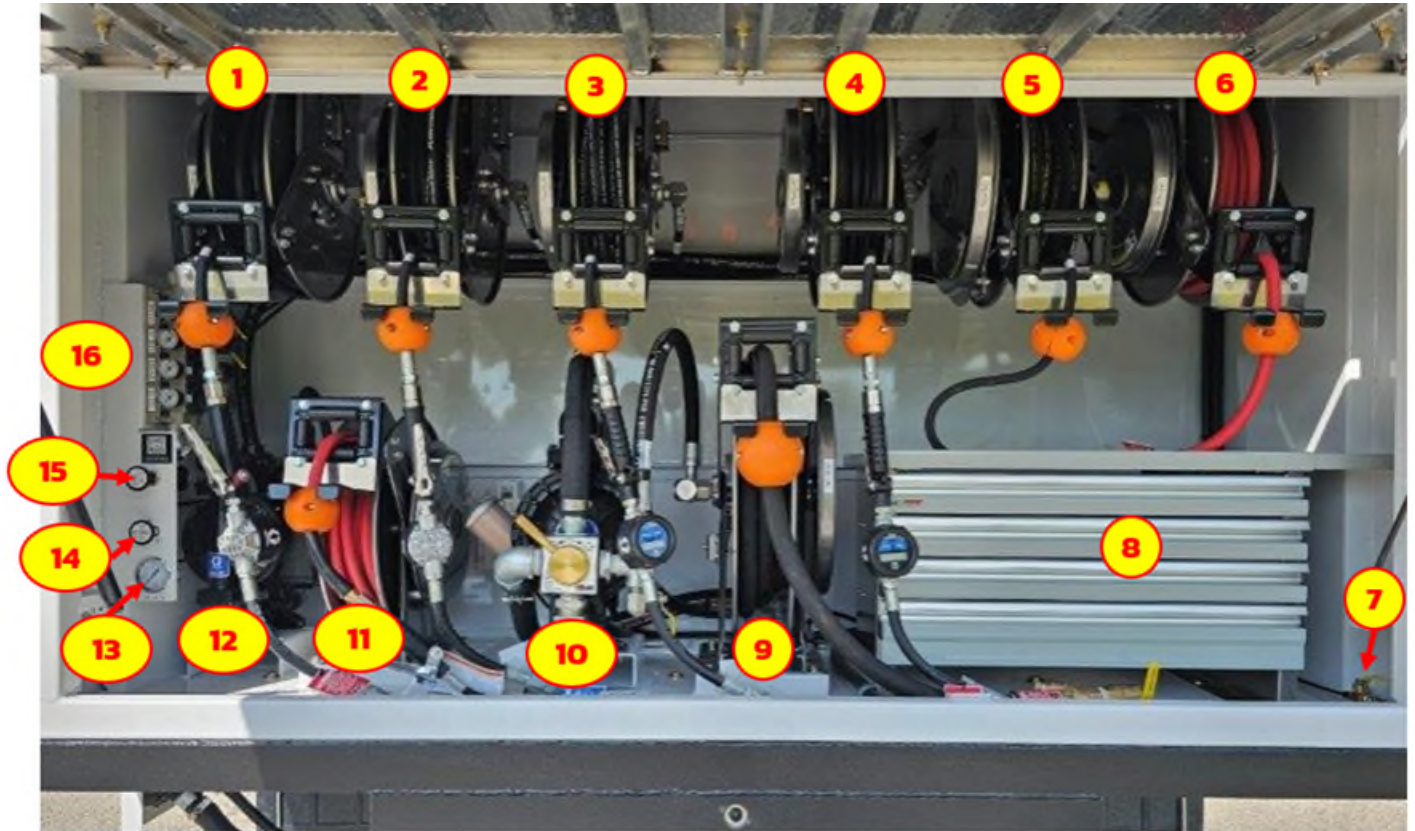
***NOTE:**

To obtain a password for accessing the manual, email elliottmachine@elliottmachine.com or call 1-800-299-0412. Be sure to include the truck's serial number, which can be found on the front page of the condensed Elliott Machine Works, Inc. manual that came with the truck or on the identification plate located on the frame outside the driver's side door.



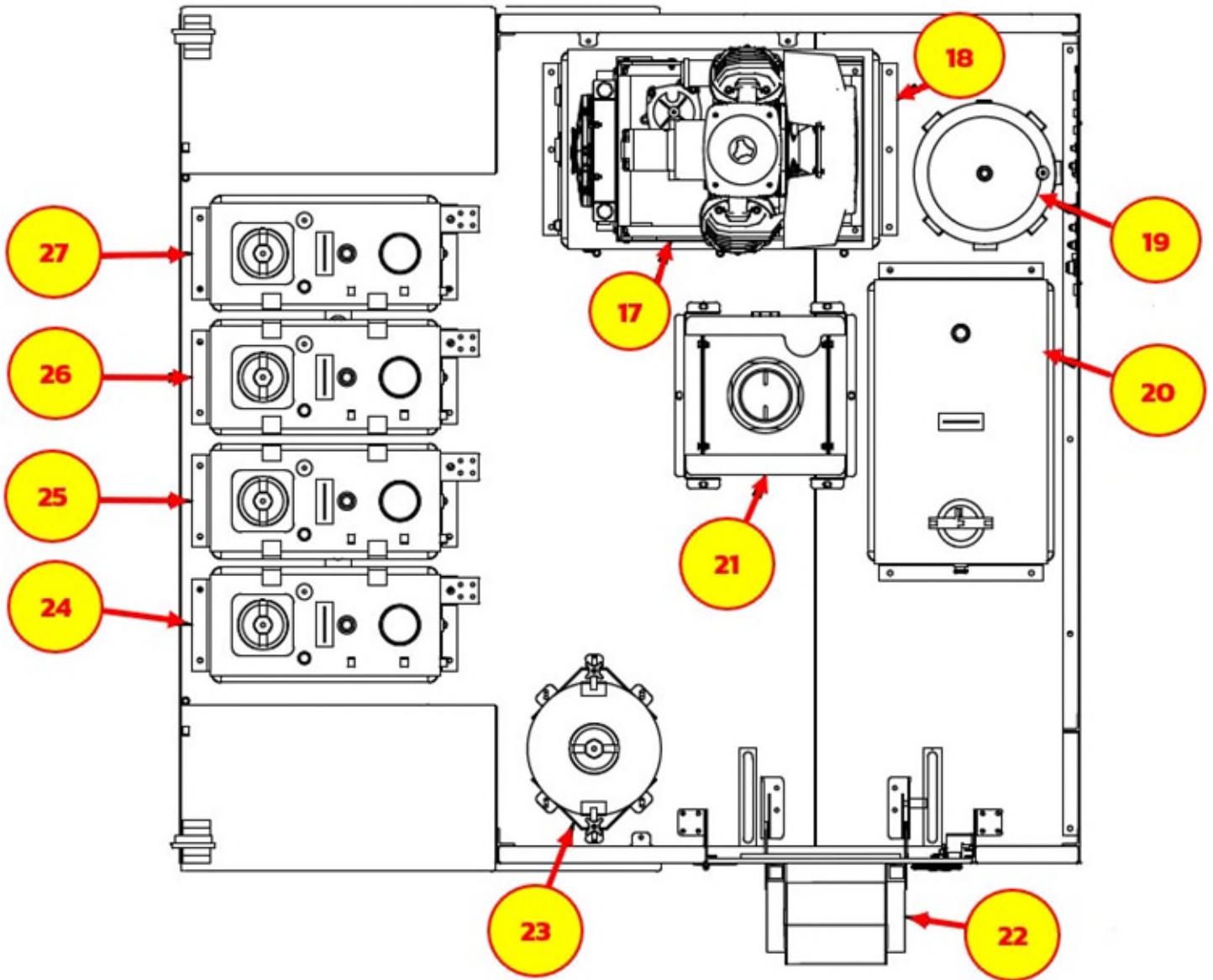
18-Dec-24

REAR COMPARTMENT



- | | |
|--------------------------|--------------------------------|
| 1. Tank A Dispenser Reel | 9. Used/Waste Reel |
| 2. Tank B Dispenser Reel | 10. Used/Waste Pump |
| 3. Tank C Dispenser Reel | 11. Anti-Freeze Dispenser Reel |
| 4. Tank D Dispenser Reel | 12. Anti-Freeze Pump |
| 5. Grease Dispenser Reel | 13. Air Gauge |
| 6. Air Dispenser Reel | 14. Anti-Freeze Switch |
| 7. Air Drain Valve | 15. Used/Waste Oil Switch |
| 8. Tool Storage | 16. Air Regulators |

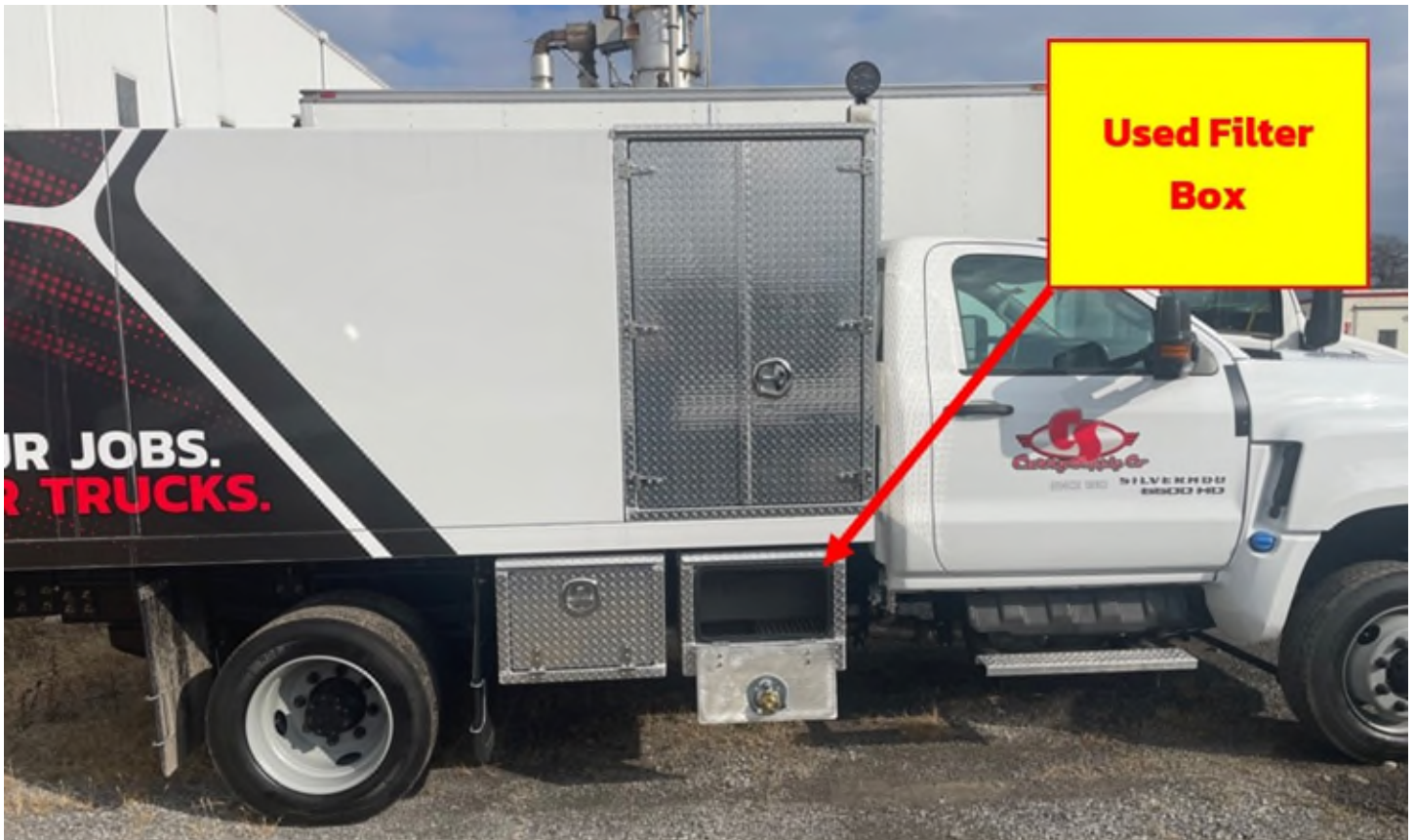
TRUCK BED COMPARTMENT



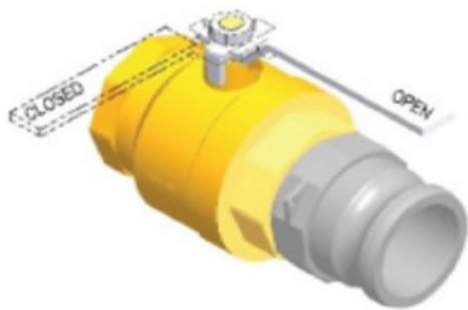
- 17. Air System Compressor
- 18. Hydraulic Reservoir
- 19. Air System Tank
- 20. Used Oil Tank 120 Gallon
- 21. Poly Tank 55 Gallon
- 22. Ladder
- 23. Grease Drum Nest 120#
- 24. Oil Tank 60 Gallon
- 25. Oil Tank 60 Gallon
- 26. Oil Tank 60 Gallon
- 27. Oil Tank 60 Gallon

18-Dec-24

PASSENGER SIDE



BALL VALVES



To open the valve, move the handle in line with the tube/hose.

To close the valve, move the handle 90° with the tube/hose.

GRACO METER



Each fluid dispensing hose has a meter that shows the amount of fluid passing through the meter. It can display gallons, quarts, pints and liters.



EMERGENCY BRAKE

May be located by your left knee, left foot or on the dash. A message will show on the console to let you know if the emergency brake is on or off.

Left Knee



Left Foot



Dash



AIR DRAIN VALVE

Trucks with built-in air compressors have a drain valve. These are located in different places

depending on the truck configuration. This valve must be closed in order for the air tank to build pressure.

Outside the driver's side door.



Inside right of the rear door.



Inside left of the rear door.



18-Dec-24

AUXILIARY CONTROL PANELS

The following panels control various truck components, including the Power Take Off (PTO), flood lights, compartment lights, strobe lights, inverter, work lights, and air compressor. The truck key must be in the "on" position, or the truck must be running, to activate these systems.

OVERHEAD



DASH



DASH continued



BETWEEN SEATS



NOZZLE

Several of the dispensing hoses ends have nozzles to stop fluid from dripping from the hose. To open, twist counterclockwise.



HYDRAULIC FLUID RESERVOIR

Located in the truck bed under the air compressor.



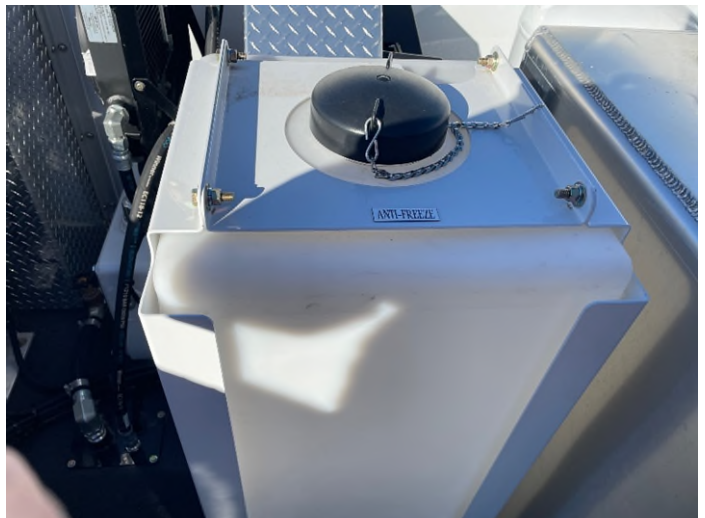
COMPRESSED AIR TANK

Located in the truck bed beside the compressor. One 30 gallon vertical tank.



ANTI-FREEZE PRODUCT TANK

Located in the truck bed between the used oil tank and product oil tanks. One 55 gallon poly tank.



18-Dec-24

PRODUCT OIL TANKS

Located in the truck bed forward (next to truck cab). Four 60-gallon product oil tanks.



PRODUCT PUMPS

Located in each product tank. Used for pumping non-corrosive and non-abrasive lubricants.



AIR COMPRESSOR

Located in the truck bed beside the compressed air tank and anti-freeze poly tank. Used for forcing liquids through the dispensing hoses.



USED/WASTE OIL TANK



Located in the truck bed by the access ladder. One 120 gallon waste oil tank.



SECTION 3

Normal Operations

This section provides the vehicle operator with step-by-step operating procedures for the installed systems.

WARNING	
ALWAYS CHOCK THE WHEELS IMMEDIATELY UPON EXITING THE VEHICLE.	
WARNING	
ALWAYS APPLY THE EMERGENCY BRAKE BEFORE EXITING THE VEHICLE.	

Prior to any operation, please perform a walk around inspection of the vehicle. Check specifically for any leaks or broken hoses.

TRUCK BODY/TOOL STORAGE

The storage bay locks are covered by shields
Type 1

To unlock it, slide the shield to the side with the tip of the key while pushing the key into the lock.



Type 2

To unlock it, push the shield in with the key.



18-Dec-24

POWER TAKE OFF (PTO) & COMPRESSOR

This truck has one switch/button to activate both the PTO and Compressor.

CAUTION

IF THE PTO LIGHT IS ON WHEN THE TRUCK ENGINE IS NOT RUNNING, TURN IT OFF PRIOR TO STARTING THE TRUCK.

1. Press the air compressor button. The PTO and air compressor will turn on and the engine idle will increase to 1400 RPM.



CAUTION

OPERATING THE SYSTEM WITH THE ENGINE IN EXCESS OF 1400 RPM WILL NOT INCREASE PERFORMANCE AND WILL CAUSE PREMATURE FAILURE OF THE HYDRAULIC COMPONENTS.

DISPENSING METER



1. Press RESET key to wake up the display and clear the previous quantity before dispensing fluid. The digital display goes blank after one minute of non-use. To wake the display, press the TOTAL key or run fluid through the meter.

The meter can be adjusted to display different units of measurement:

- a. Pints (PTS)
- b. Quarts (QTS)
- c. Gallons (GAL)
- d. Liters (L)

Press the TOTAL & RESET keys together. All the segments of the digital display illuminate for 6 seconds. The software revision displays for 2 seconds. The meter goes blank and the volume unit blinks. The meter is now in Setup Mode. Release the TOTAL & RESET keys. Repeatedly press the TOTAL key to change the unit of

measure. When the desired unit appears, press the RESET key to save the selection.

The meter is factory set to display CAL when the meter must be calibrated. See page 10 of the meter manual. The manual may be obtained by clicking the link in section two of this manual.

Replacement of the meter battery may be found on page 12 in the same manual.

LADDER

1. Open the compartment door.



2. Pull out on the spring-loaded retaining pin.



3. Lower the ladder against the rear tire.



BALL VALVES

Turn on two ball valves shown below. They may always remain open. To service a unit, turn these off.



LUBE DISPENSING

CAUTION

PURGE ALL PRODUCT LINES BEFORE USING. PRODUCT LINES CONTAIN HYDRAULIC FLUID USED DURING TESTING. NOT PURGING WILL RESULT IN OIL CONTAMINATION.

1. With the truck in park/neutral and emergency brake on, pull the dispensing hose to the desired area.
2. Turn on and clear meter display (see previous procedure).
3. If a twist nozzle is at the end of the hose, twist it counterclockwise to open.



4. Squeeze the trigger and dispense the lube.



5. When dispensing is finished, release the trigger and rewind the hose.

CAUTION

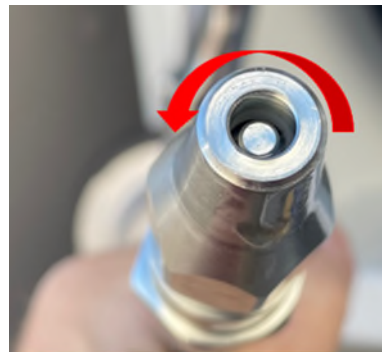
NEVER ALLOW THE PUMP TO RUN DRY OF FLUID BEING PUMPED. A DRY PUMP WILL QUICKLY ACCELERATE TO A HIGH SPEED, POSSIBLY DAMAGING ITSELF, AND MAY GET VERY HOT.

GREASE DISPENSING

1. With the Emergency brake applied, chocks under the wheels and PTO engaged, pull the dispensing hose to the desired area. Squeeze the trigger and dispense the lube.



2. If a twist nozzle is at the end of the hose, twist it counterclockwise to open.



18-Dec-24

3. When dispensing is finished, release the trigger and rewind the hose.

ANTI-FREEZE DISPENSING

1. With the Emergency brake applied, chocks under the wheels and PTO engaged, push the Anti-Freeze switch in on the oil/air regulator.



2. If a twist nozzle is at the end of the hose, twist it counterclockwise to open.



3. Pull the dispensing hose to the desired area. Squeeze the trigger and dispense the lube.



4. When dispensing is finished, release the trigger and rewind the hose.

5. Pull out the Anti-Freeze switch on the oil/air regulator.



18-Dec-24

USED OIL RECOVERY

Empty Equipment Oil Tank-Suction

CAUTION

TO AVOID CLOGGING, IT IS RECOMMENDED TO USE A SUCTION BELL AT THE END OF THE HOSE TO KEEP DEBRIS FROM ENTERING THE SYSTEM.

1. With the Emergency brake applied, chocks under the wheels and PTO engaged, pull the dispensing hose to the desired area and connect to the equipment to be emptied.
2. Move the four-port valve to the "Fill Holding Tank" position.



3. Make sure the ball valve on the side of the pump is closed (To empty the filter box, open this valve & close the hose ball valve).



4. Open the ball valve at the end of the hose (to empty used filter box, leave this valve closed).



5. Push in the used oil air switch.



6. When finished, close the ball valve at the end of the hose.



7. Pull out the used oil air switch.



3. Make sure the ball valve on the side of the pump is closed.



8. Rewind the hose.

NOTE

IF AN AIRLOCK FORMS WITHIN THE SYSTEM, CYCLE THE 4-PORT VALVE TO "PUMP PRESSURE" TO PUSH FLUID THROUGH THE SYSTEM, ELIMINATING THE AIR LOCK.

EMPTY USED OIL TANK-DISPENSING

1. With the Emergency brake applied, chocks under the wheels and PTO engaged, pull the dispensing hose to the desired area and connect to the equipment to be serviced.

2. Move the four-port valve to the "Empty Holding Tank" position.



4. Open the ball valve at the end of the hose.



5. Push in the used oil air switch.



18-Dec-24

6. When finished, close the ball valve at the end of the hose.



7. Pull out the used oil air switch.



8. Rewind the hose.

REAR COMPARTMENT DOOR

Align the lower tube with the upper rod and pull the door down and shut.



Section 4

Maintenance and Lubrication

Due to numerous jobs and purposes, varying environments and climates, and importance to safety, routine maintenance is highly recommended. Regular maintenance keeps the trucks functioning correctly and at optimum efficiency. The following tasks can help prevent breakdown and keep the truck on the job when you need it most.

NOTE

FOR THE MOST ACCURATE MAINTENANCE FOR A SPECIFIC CHASSIS SYSTEM, REFER TO THE PRODUCT SPECIFIC USER MANUAL.

DAILY SAFETY MAINTENANCE

Tires – Check for proper inflation and tread depth.

Brake System – Routine inspections on brake pads and calipers for safe operation.

Lights – Check all lights are working and functioning correctly.

Fluids – Check that the engine oil, coolant, Hydraulic fluid, and wiper fluid are all at the right levels.

Hoses – Check for leaks and cracks, and make sure everything is securely fastened.

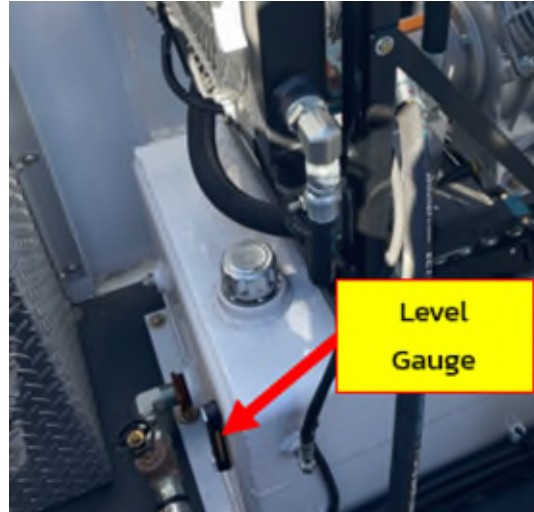
HYDRAULIC FLUID

FIRST 50 HOURS OF OPERATION

- Replace the fluid and filter.

DAILY

- Check the fluid level daily before use. Fill with fluid that meets specification ISO VG 68. The filter must be rated for 10 micron.



TOOL STORAGE/TRUCK BODY

DAILY

- Ensure doors latch securely.
- Insert the key into each door and turn to lock. Ensure the doors do not open.
- Insert the key into each door and turn to unlock. Ensure the doors open.

MONTHLY

- Lubricate hinges with white lithium spray lubricant.
- Spray door locks with lock lubricant.

EVERY 6 MONTHS

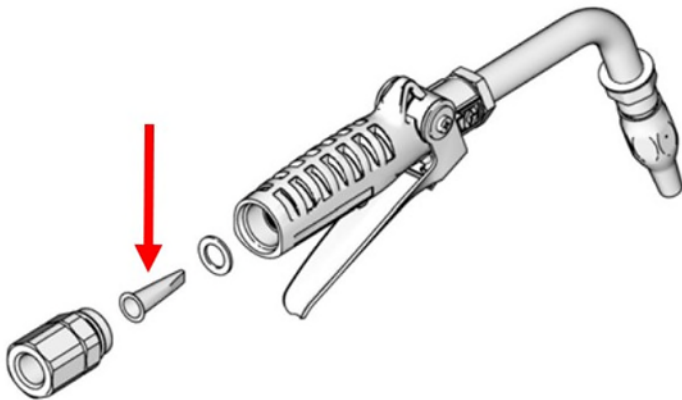
- Check woodsills positioned under the long sills of the tank and truck body.

18-Dec-24

- Check spring tie down bolts are tight and double nutted.
- Check straight tie down bolts are tight and double nutted.
- Check hydraulic reservoir vent is clean and free of dirt.

DISPENSING UNIT STRAINER

1. Clean as needed.



AIR DRAIN VALVE

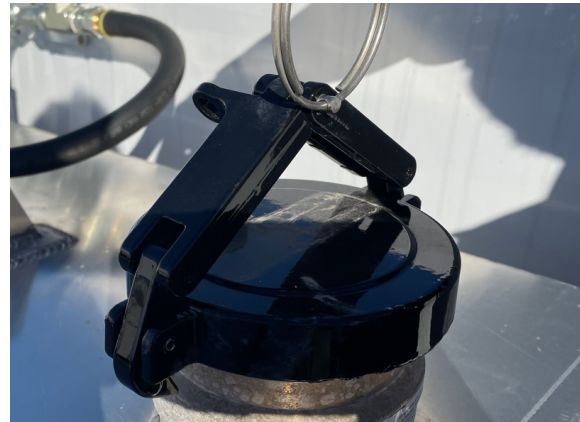
1. Open and drain water after every use.



TANK AIR BREATHER

ANNUALLY

Located on top of each product tank. The breather is inside the product cap. Inspect using forced air through the filter. Replace if air does not freely move through the filter.



POWER TAKE OFF (PTO)

Upon delivery of the vehicle and initial operation, check for leaks from any location. The PTO should be serviced at the same intervals as the transmission. The transmission maintenance should be completed as recommended by the vehicle manufacturer. The PTO is part of a system that includes the drive shaft which should also be checked at the same time.

Within the first week of use, recheck the installation of the PTO. Check for leaks and loose mounting hardware (studs, cap screws, nuts). Recheck the cable or lever connections for proper adjustment and tighten any loose connections. At regular maintenance intervals, check adjustments and lubricate moving parts,

tighten and repair the connections, mounting hardware, cable, or lever linkages.

DAILY BEFORE USE

- Check for any leaks.
- Check the transmission oil level.
- Check for any dents or damage to PTO or driveshaft system.

EVERY 100 HOURS

- Recheck the installation of the PTO.
- Check for leaks and loose mounting hardware (studs, cap screws, nuts).
- Recheck and tighten any loose connections.
- Check adjustments and lubricate moving parts.
- Check and retighten any bolts, linkages, or mounting hardware.
- Apply anti-seize grease to the output shaft

DIAPHRAGM PUMP

EACH USE

- Check all hoses for wear or damage and replace as necessary.
- Check all threaded connections are tight and leak-free.

EVERY 500 HOURS OR MONTHLY

- remove the hose from the pump air inlet and add two drops of machine oil to the air inlet.

CAUTION

DO NOT OVER-LUBRICATE THE PUMP. OIL IS EXHAUSTED THROUGH THE MUFFLER, WHICH COULD CONTAMINATE THE FLUID SUPPLY OR OTHER EQUIPMENT. EXCESSIVE LUBRICATION CAN ALSO CAUSE THE PUMP TO MALFUNCTION.

AS NEEDED

- Flush the pump often enough to prevent the fluid from drying or freezing in the pump. Use a compatible solvent.
- Always flush the pump and relieve the pressure before storing it for any length of time.

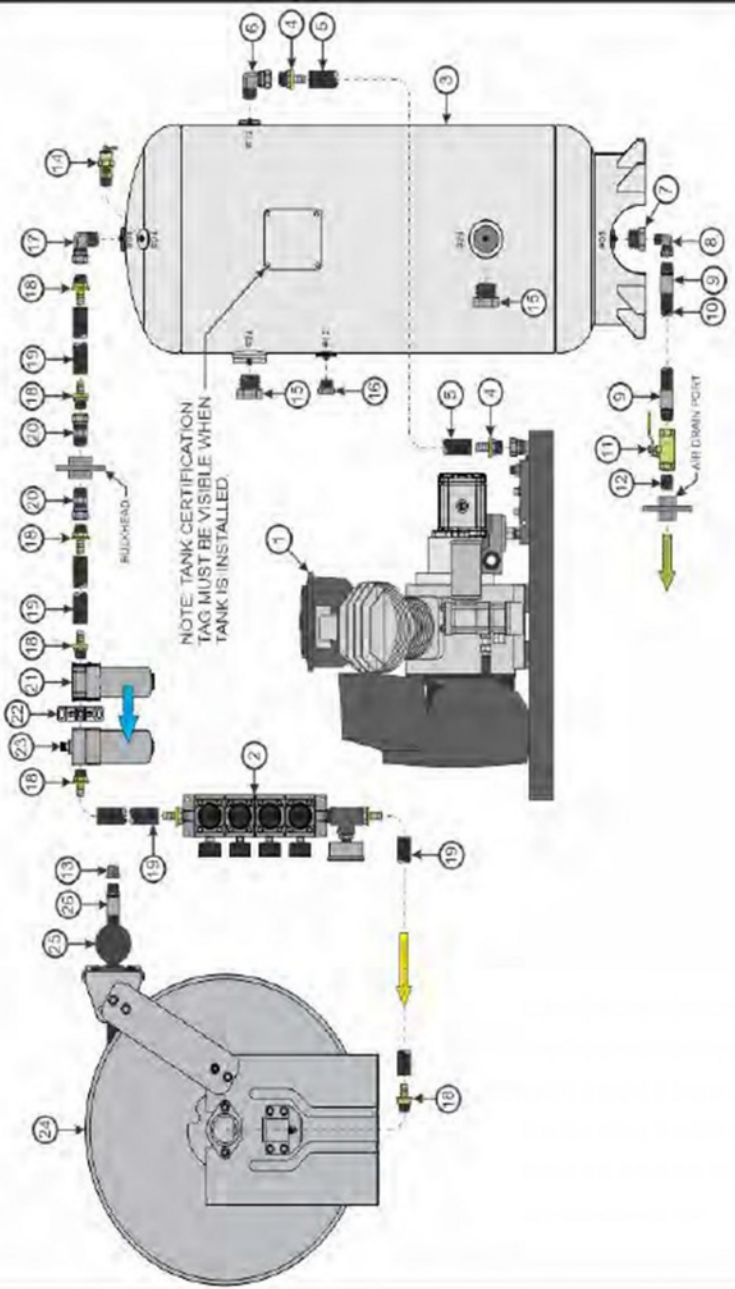
Section 5

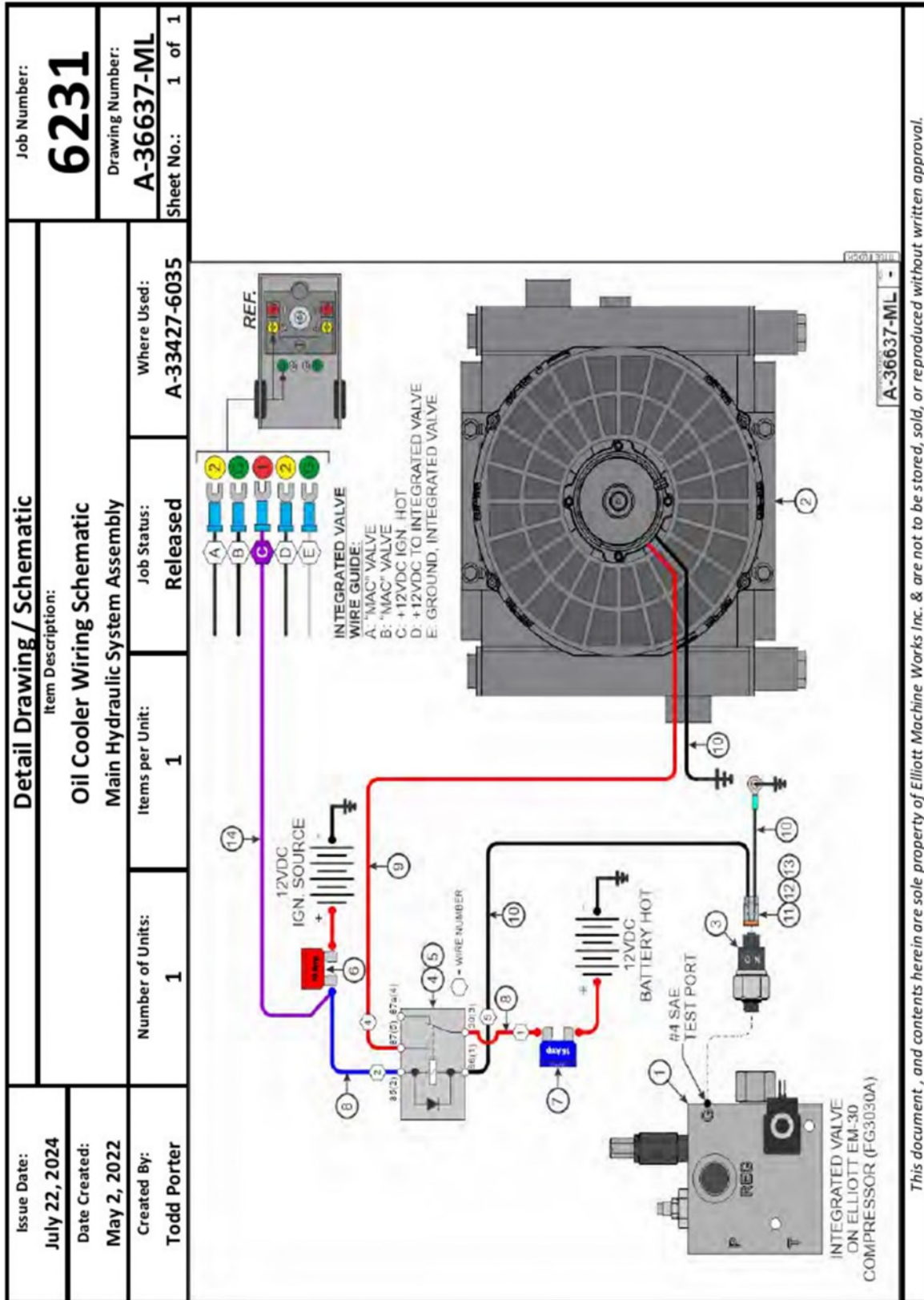
Schematics

Air Supply System SCH1-1	Page 27
Oil Cooler Wiring SCH2-1	Page 28
Hydraulic System SCH3-1	Page 29
Air Regulator Stack SCH4-1	Page 30
M.P. Oil System SCH5-1	Page 31
Chassis System (Grease) SCH6-1	Page 32
Anti-Freeze System SCH7-1	Page 33
Used Oil Recovery System SCH8-1	Page 34
Diaphragm Pump Assembly SCH9-1	Page 35
Reel Cabinet Wiring SCH10-1	Page 36

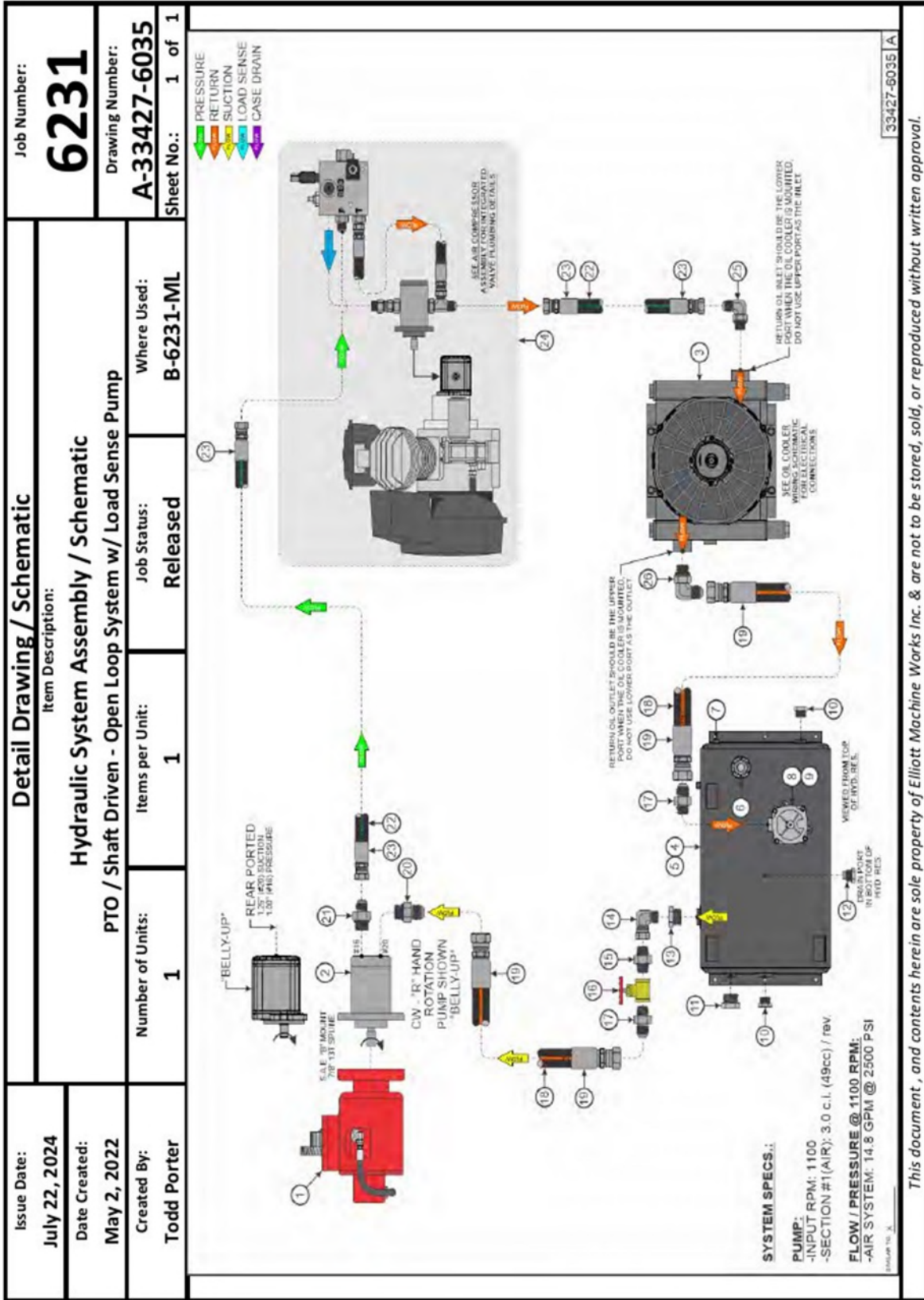
CAUTION

PLEASE CONTACT CURRY SUPPLY BEFORE ATTEMPTING ANY CHANGES TO THE ELECTRICAL SYSTEMS. DOING SO MAY CAUSE EQUIPMENT DAMAGE OR VOID WARRANTY.

<p>Issue Date: July 22, 2024</p>	<p>Detail Drawing / Schematic</p>			<p>Job Number: 6231</p>
<p>Date Created: May 2, 2022</p>	<p>Item Description: Air Supply System</p>			<p>Drawing Number: AS-ML</p>
<p>Created By: Todd Porter</p>	<p>Number of Units: 1</p>	<p>Items per Unit: 1</p>	<p>Job Status: Released</p>	<p>Where Used: B-6231-ML</p>
<p>Sheet No.: 1 of 1</p>  <p>NOTE: TANK CERTIFICATION TAG MUST BE VISIBLE WHEN TANK IS INSTALLED.</p> <p>AIR DRAIN / PORT</p>				
<p>This document, and contents herein are sole property of Elliott Machine Works Inc. & are not to be stored, sold, or reproduced without written approval.</p>				



This document, and contents herein are sole property of Elliott Machine Works Inc. & are not to be stored, sold, or reproduced without written approval.



This document , and contents herein are sole property of Elliott Machine Works Inc. & are not to be stored, sold, or reproduced without written approval.

Issue Date: July 22, 2024	Detail Drawing / Schematic			Job Number: 6231
Date Created: May 2, 2022	Item Description: Air Regulator Stack Assembly			Drawing Number: A-33076-4
Created By: Todd Porter	Number of Units: 1	Items per Unit: 1	Job Status: Released	Where Used: AS-ML
Issue Date: 07/11/2022		Drawing Number: A-33076-REG-4		
Revision:		Sheet No.: 1 of 1		

Schematic Details	
Air Regulator Assembly w/ Gauge and Hose Nipple	

INLET OR OUTLET

REGULATED PRESSURE FOR OUTLET PORT

INLET OR OUTLET

NON-REGULATED PRESSURE FOR AIR SYSTEM

REF.

REGULATED PRESSURE OUTPUT PORT

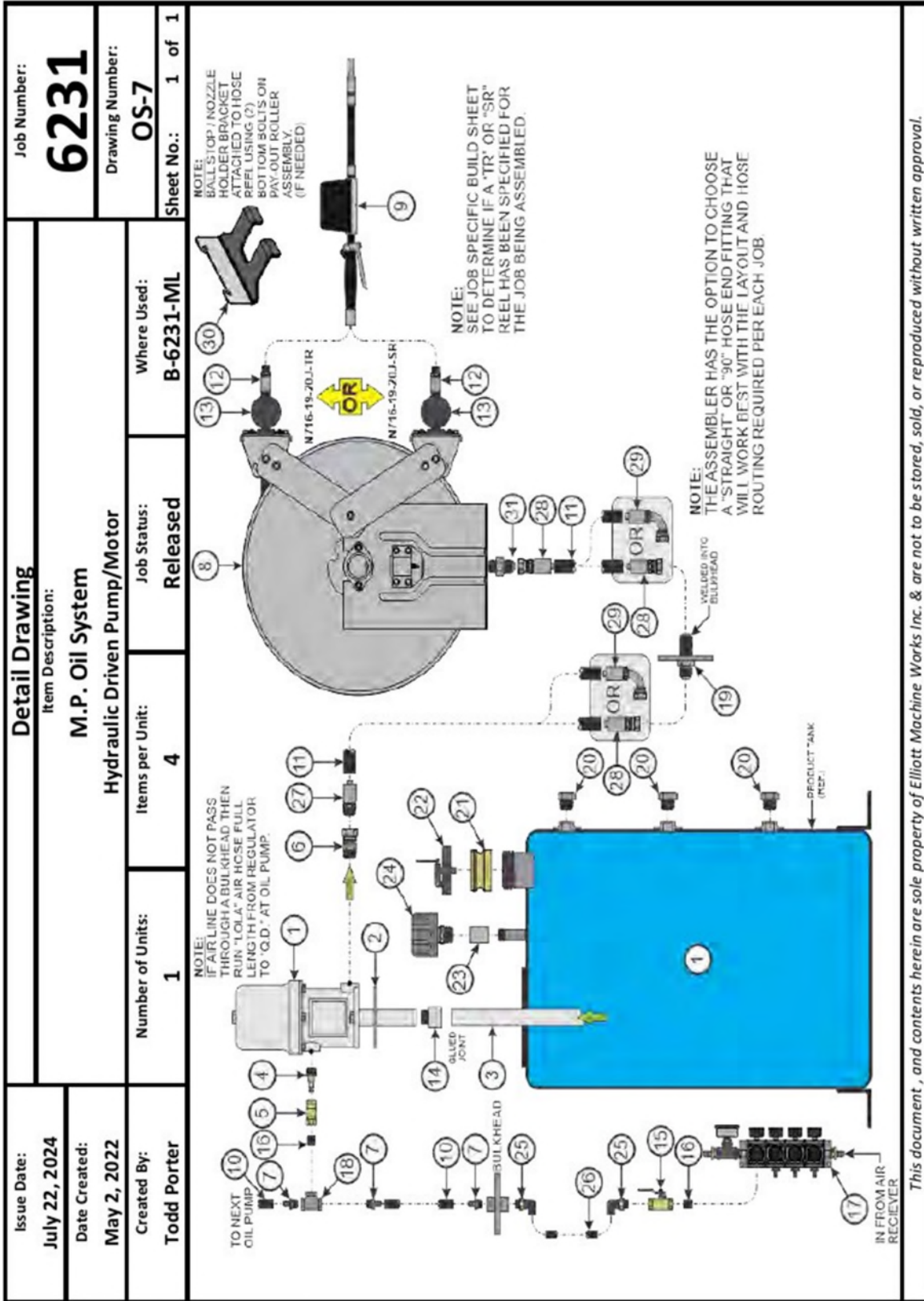
END CAP w/ O-RING GROOVE

Note: O-Ring Cavity must Face the same direction on all End Caps & Sections

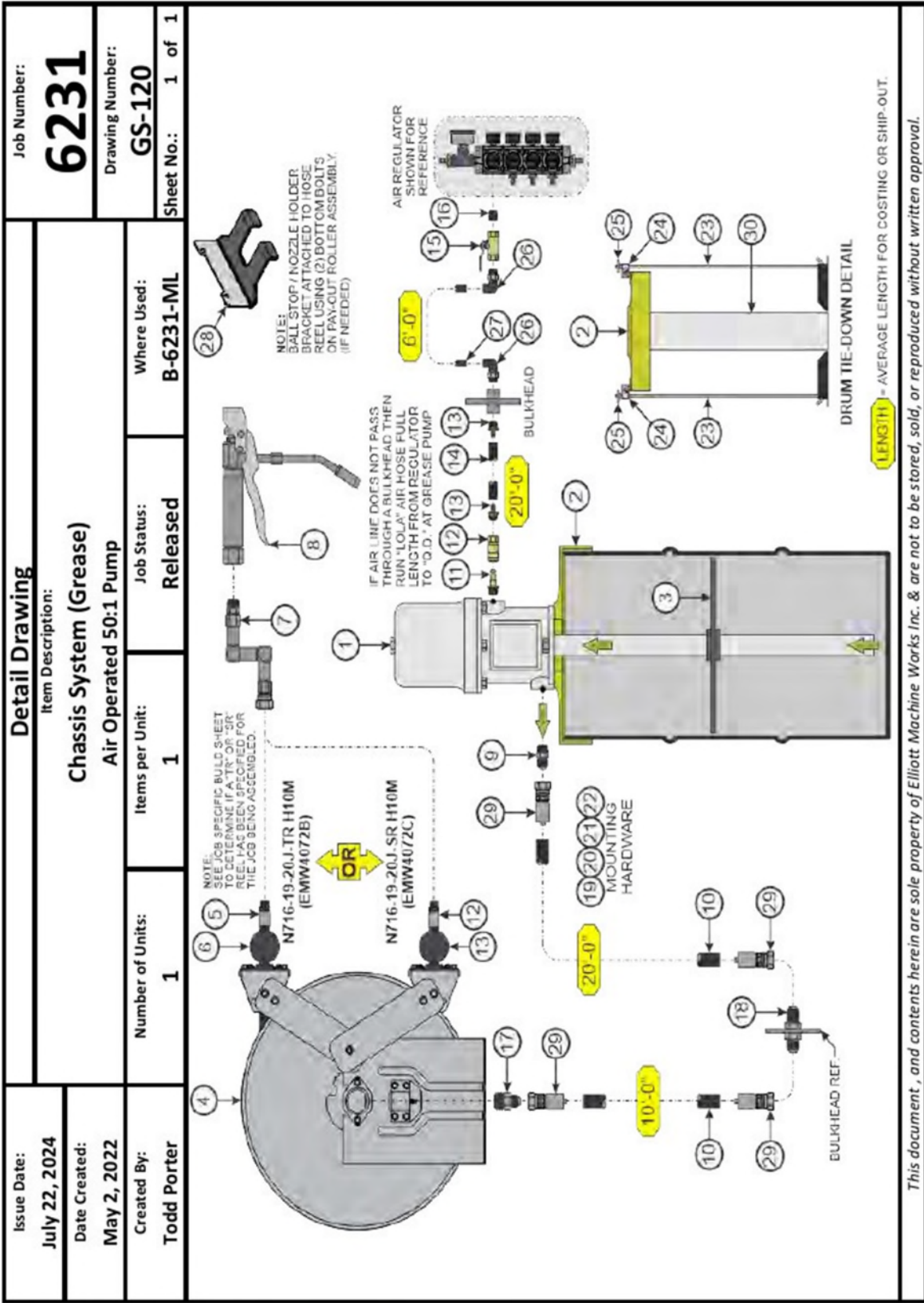
REV	DATE	DESCRIPTION	BY

This document, and contents herein are sole property of Elliott Machine Works Inc. & are not to be stored, sold, or reproduced without written approval.

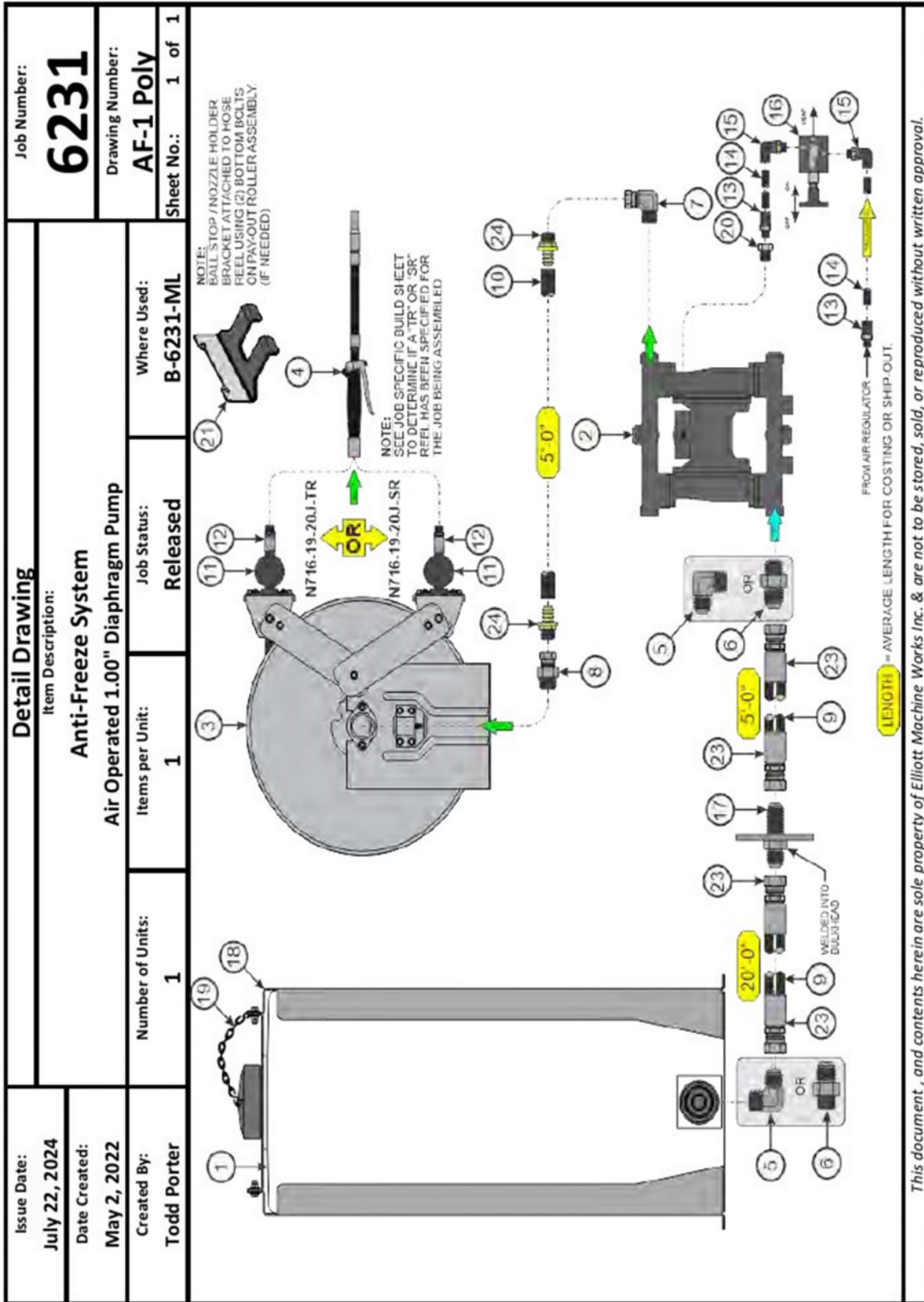
This document, and contents herein are sole property of Elliott Machine Works Inc. & are not to be stored, sold, or reproduced without written approval.



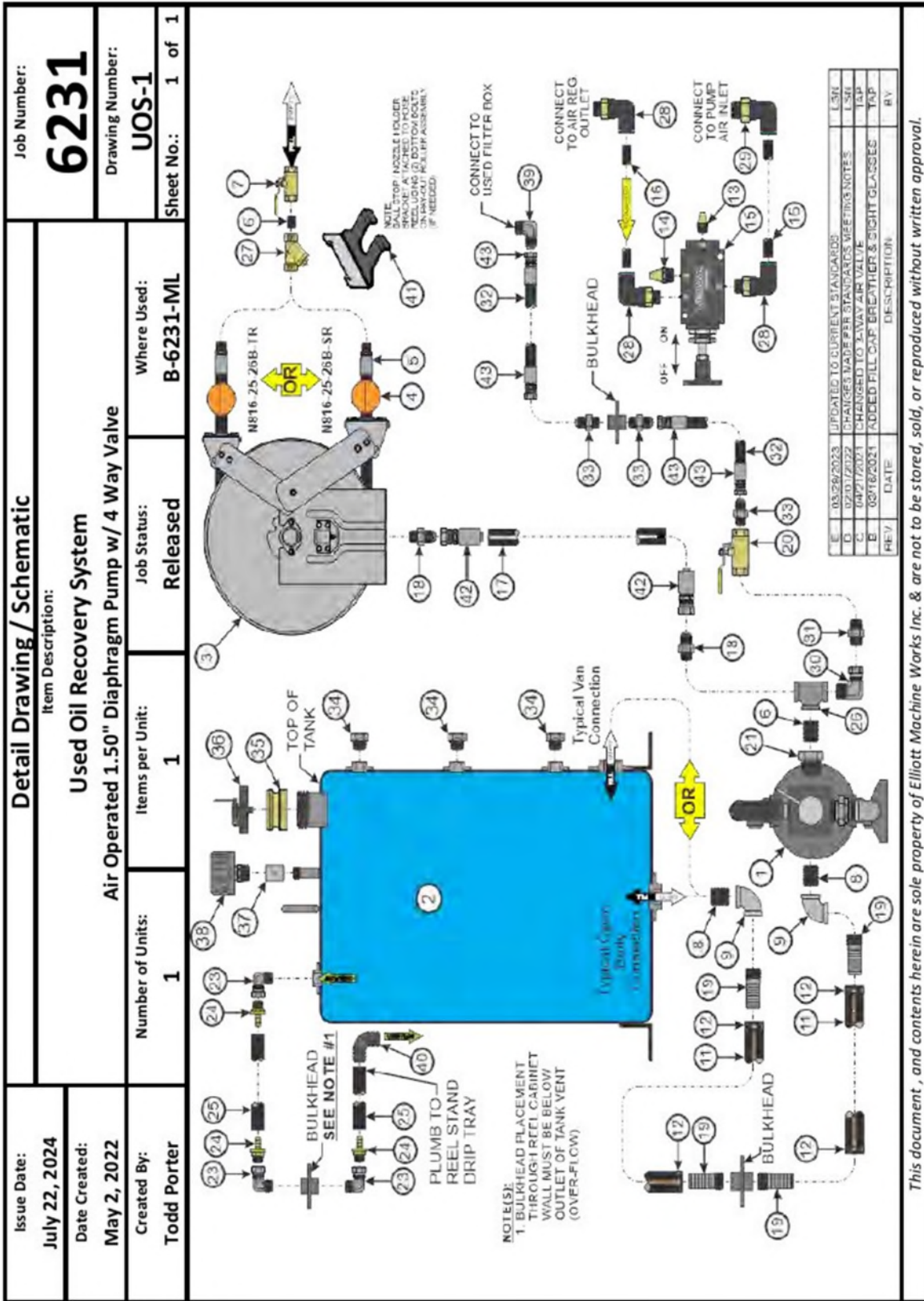
This document, and contents herein are sole property of Elliott Machine Works Inc. & are not to be stored, sold, or reproduced without written approval.



This document, and contents herein are sole property of Elliott Machine Works Inc. & are not to be stored, sold, or reproduced without written approval.



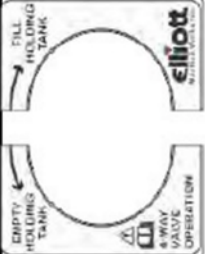
This document, and contents herein are sole property of Elliott Machine Works Inc. & are not to be stored, sold, or reproduced without written approval.



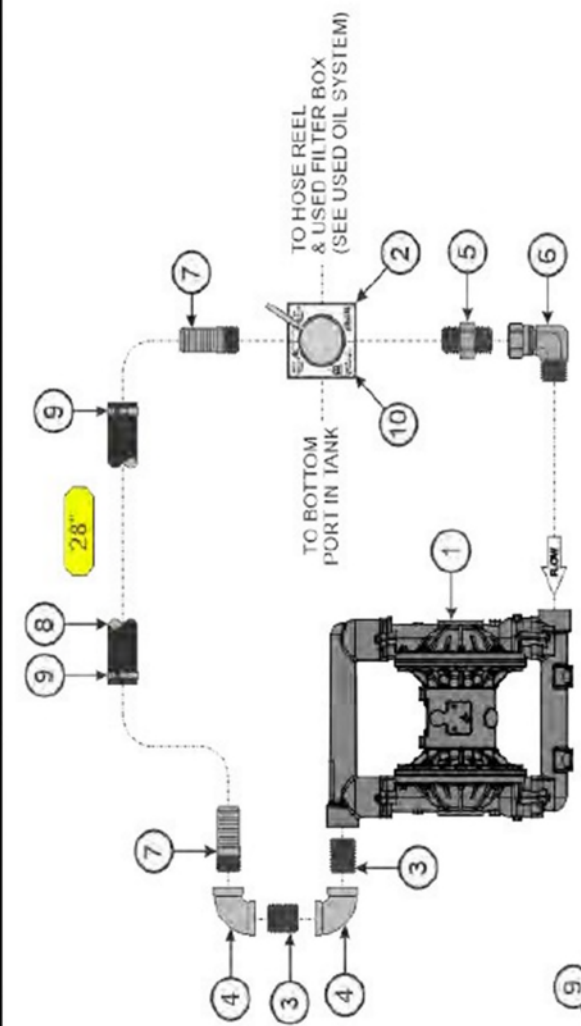
This document, and contents herein are sole property of Elliott Machine Works Inc. & are not to be stored, sold, or reproduced without written approval.



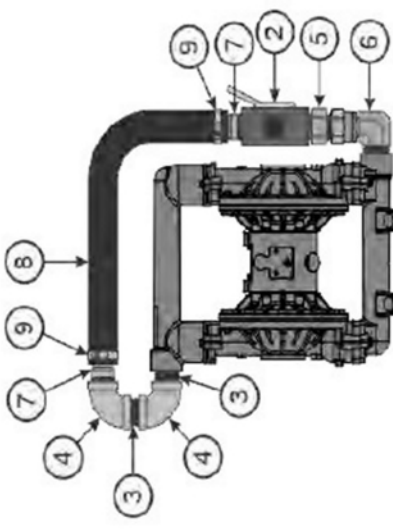
Issue Date: July 22, 2024	Detail Drawing / Schematic			Job Number: 6231
Date Created: May 2, 2022	Diaphragm Pump Assembly			Drawing Number: UOP-1
Created By: Todd Porter	Number of Units: 1	Items per Unit: 1	Job Status: Released	Where Used: UOS-1
Air Operated 1.50" Diaphragm Pump w/ 4 Way Valve				
Sheet No.: 1 of 1				



2 PART DECAL FOR 4-WAY VALVE OPERATION (EMV3960A)



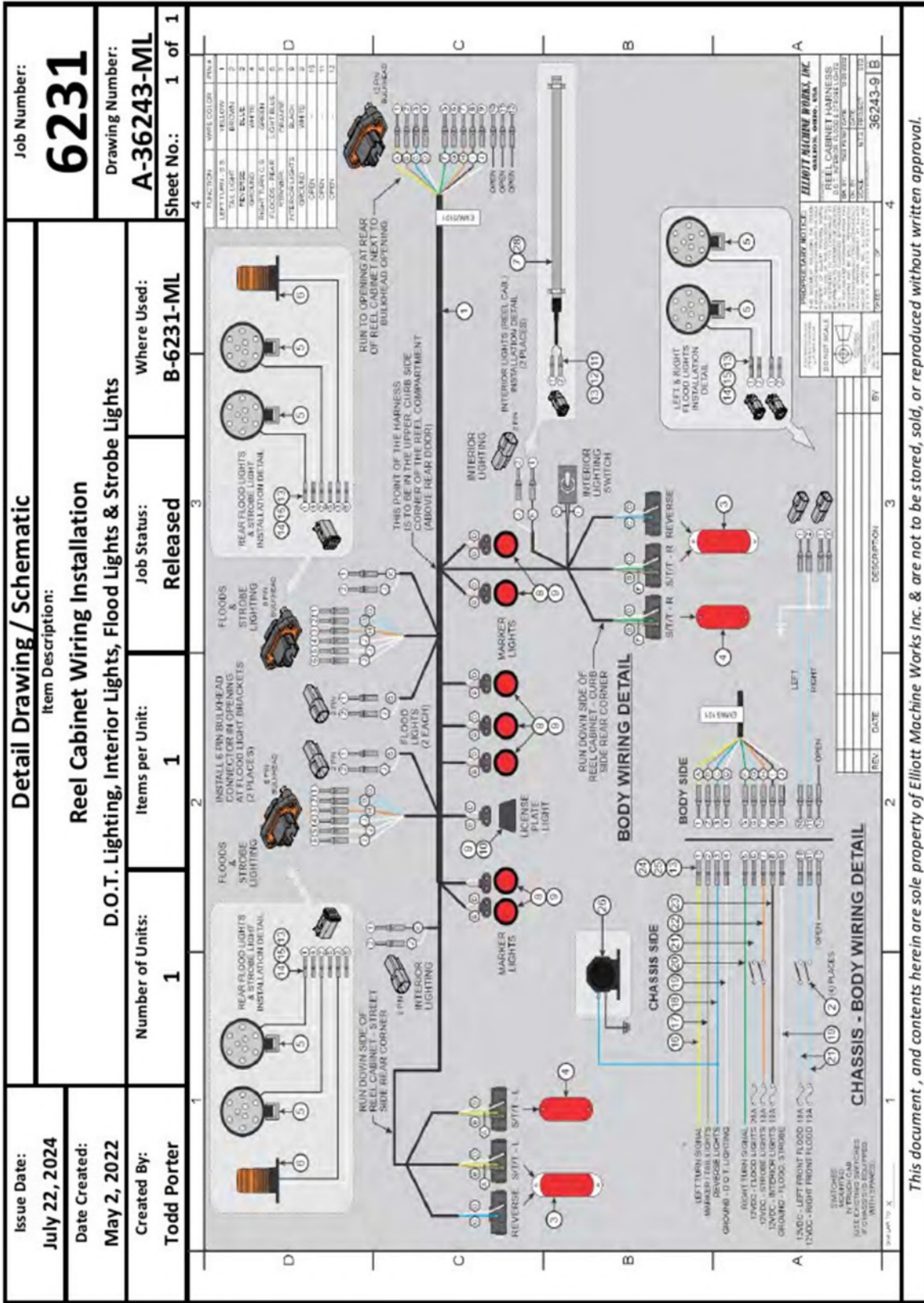
SCHEMATIC VIEW



ASSEMBLED VIEW

REV	DATE	DESCRIPTION	BY

This document, and contents herein are sole property of Elliott Machine Works Inc. & are not to be stored, sold, or reproduced without written approval.



This document, and contents herein are sole property of Elliott Machine Works Inc. & are not to be stored, sold, or reproduced without written approval.



SECTION 6

Troubleshooting

PROBLEM	POSSIBLE CAUSE	REMEDIES
Truck cranks with the key switch but will not run.	The theft deterrent disable switch is in the "ON" position (if equipped).	Turn the theft deterrent switch off.
The truck engine runs erratically or stalls when controls are operated.	The idle speed is too slow.	Increase the engine speed.
	The engine is still cold.	Wait until the truck engine is warm.
	The engine needs a tune up.	Call Curry Supply Company for service 800.345.2829.
The tool compartment key will not go into the lock.	Shield is blocking insertion of the key.	Slide shield out of the way with the tip of the key while pushing the key into the lock.
	The lock is full of ice.	Spray lock with de-ice spray.
	The key is the wrong one for the lock.	Use the correct key.
No response from hydraulic controls	The truck engine is not running.	Start the engine.
	PTO is not engaged.	Engage the PTO.
	Low hydraulic oil.	Add hydraulic oil.
	Relief valve is set too low.	Call Curry Supply Company for service 800.345.2829.
	Pinched pressure or return hydraulic line.	Repair or replace.
	Defective hydraulic pump.	Call Curry Supply Company for service 800.345.2829.
	Pressure compensated pump set too low.	Call Curry Supply Company for service 800.345.2829.

Slow hydraulic operations.	Valve spools are not fully open.	Call Curry Supply Company for service 800.345.2829.
	Oil is too heavy or cold.	Replace oil to correct viscosity for operating range temperature.
	Low hydraulic oil.	Add oil.
	System operating pressure or main system relief set too low.	Call Curry Supply Company for service 800.345.2829.
	Dirt or foreign matter in hydraulic system, filters valves, etc....	Call Curry Supply Company for service 800.345.2829.
	Pinched pressure or return hydraulic line.	Repair or replace.
	Engine speed is too low.	Increase engine speed to 1400 RPM. DO NOT EXCEED 1400 RPM.
	Excessive leakage in pump or control valve due to wear.	Call Curry Supply Company for service 800.345.2829.
The hydraulic system is overheating.	The main system relief valve is set too low or is open because of contamination.	Call Curry Supply Company for service 800.345.2829.
	The hydraulic system operating pressure is too high.	Call Curry Supply Company for service 800.345.2829.
	Excessive hydraulic oil flow because of improper PTO ratio or the truck engine is operating at an excessive speed.	Reduce engine speed. If it is still overheating, refer to the manufacturer's service and maintenance manual.
Diaphragm pump cycles at stall or fails to hold pressure at stall. Diaphragm pump will not cycle, or cycles once and stops.	Worn check valve balls, seats or O-rings.	Replace.
	Air valve is stuck or dirty.	Disassemble and clean air valve. Use filtered air.
	Check valve ball severely worn and wedged in seat or manifold.	Replace ball and seat.
	Dispensing valve clogged.	Relieve pressure and clear valve.

Diaphragm Pump operates erratically.	Clogged suction line.	Inspect; clear.
	Sticky or leaking balls.	Clean or replace.
	Diaphragm ruptured.	Replace.
	Restricted exhaust.	Remove restriction.
Air bubbles in hydraulic fluid from the diaphragm pump.	Suction line is loose.	Tighten.
	Diaphragm is ruptured.	Replace.
	Loose inlet manifold, damaged seal between manifold and seat, damaged O-rings.	Tighten manifold bolts or replace seats or O-rings.
	Loose diaphragm shaft bolt.	Tighten or replace.
	Damaged O-ring.	Replace.
Dispensing meter display does not wake up or displays unintelligent characters.	Electronic control is malfunctioning.	Replace electronic control.
	Batteries are depleted within the meter unit.	Replace battery.
Slow or no fluid flow.	Strainer within dispensing meter unit clogged.	Clean or replace strainer.
	Pump pressure is low.	Increase pump pressure.
	Shut off valve is not fully open.	Fully open shut off valve.
	Foreign material is jammed in the meter element.	Call Curry Supply Company for service 800.345.2829.

Section 7

Warranty & Proprietary Information

Curry Supply Company warrants products designed and manufactured by Curry Supply Company to be free from defects in material and workmanship under proper use and maintenance. Products must be installed and operated in accordance with Curry Supply’s written instructions and capacities. All warranty periods will begin on the in-service date as defined in this document. This warranty shall cover the following Curry Supply Products:

	1 Year	2 Years	Variable
On Road Water / Flatbed / Crash Attenuator / Lube Skid			
Curry Manufactured Components		✓	
Paint Coverage on Curry Manufactured Parts	✓		
Parts	✓		
Repair Labor	✓		
Off Road / Dump / Industrial Carrier / Vacuum / Winch / Railroad			
Tank	✓		
Tank Exterior Paint Coverage	✓		
Parts	✓		
Repair Labor	✓		
Mechanics			
Body (Refer to Manufacture Warranty)			✓
Crane (Refer to Manufacture Warranty))			✓
Paint Coverage (Refer to Manufacture Warranty)			✓
Parts (Refer to Manufacture Warranty)			✓
Repair Labor (Refer to Manufacture Warranty)			✓
Lube			
Body (Refer to Manufacture Warranty)	✓		
Tanks (Refer to Manufacture Warranty)			✓
Parts	✓		
Repair Labor	✓		
Paint Coverage	✓		
Utility Lift			
Body (Refer to Manufacture Warranty)			✓
Lift (Axion)			✓
Parts	✓		
Repair Labor	✓		
Body Paint Coverage	✓		



Definitions

Curry Supply Manufactured Components/Structures – Includes any structural weldment or load bearing support structure manufactured by Curry Supply Company.

Rust Through on Curry Supply Components/Structures – Rust Through is defined as a hole in the metal caused by corrosion. Excluded is corrosion caused by external caustics, including but not limited to improper cleaning material, road salt and other chemicals left on the structure for extended periods of time.

Paint Coverage on Curry Supply Manufactured Parts – Curry Supply guarantees that exterior paint will not fail in terms of adhesion, blistering or unreasonable loss of color or gloss for a 1-year period. Excluded is damage such as chips, dents, scratches, tank interior coating, and corrosion due to caustic chemicals (e.g. Brine Solution / Leachate) and dirt build-up. Regular cleaning and maintenance of the product to remove external factors is expected to keep this warranty in force.

Vendor Supplied Components/Structures – Products purchased by Curry Supply from outside vendors. These items shall be covered by the warranty offered by the respective manufacturer only. Curry Supply does not obligate itself to any such warranty.

Warranty Process

Curry Supply’s obligation under this warranty is limited to, and the sole remedy for any such defect shall be the repair and/or replacement (at Curry Supply’s option) of the unaltered part and/or component in question. Curry Supply after-sales service personnel must be notified by telephone, email, or letter of any warranty applicable damage within fourteen (14) days of its occurrence. If possible, Curry Supply will ship the replacement part within 24 hours of notification by the most economical, yet expedient, means possible. Expedited freight delivery will be at the expense of the owner.

Warranty claims must be submitted and shall be processed in accordance with Curry Supply’s established warranty claim procedure. Curry Supply after-sales service personnel must be contacted prior to any warranty claim. A return materials authorization (RMA) may be issued to the claiming party prior to the return of warranty parts. Parts returned without prior authorization will not be recognized for warranty consideration. All damaged parts must be returned to Curry Supply freight prepaid; freight collect returns will be refused. Freight reimbursement of returned parts will be considered as part of the warranty claim.



18-Dec-24

Warranty Repair

Warranty service will be performed by any Curry Supply factory, Curry Supply mobile technician, Curry Supply authorized service partner, or by the affected owner. At the time of requesting warranty service, Curry Supply after-sales service personnel will verify date of delivery of the product. The owner shall be obligated to pay for any overtime labor requested of the servicing company by the owner, any field service call charges, and any towing and/or transportation charges associated with moving the equipment to the designated repair/service provider.

All obligations of Curry Supply and its service providers shall be voided if someone other than an authorized Curry Supply provider performs other than routine maintenance service without prior written or verbal approval from Curry Supply. In the case repair work is performed on a Curry Supply-manufactured product, original Curry Supply parts must be used to keep the warranty in force. The warranty may also be voided if the product is modified or altered in any way not approved, in writing, by Curry Supply.

Warranty Limitations/Responsibilities

This warranty covers only defective material and workmanship. It does not cover depreciation or damage caused by normal wear and tear, accident, mishap, untrained operators, or improper or unintended use. The owner has the obligation of performing routine care and maintenance duties as stated in Curry Supply's written instructions, recommendations, and specifications. Any damage resulting from owner/operator failure to perform such duties shall void the coverage of this warranty. The owner will pay the cost of labor and supplies associated with routine maintenance.

The only remedies the owner has in connection with the breach or performance of any warranty on the Curry Supply product specified are those set above. In no event will Curry Supply, or any company affiliated with Curry Supply, be liable for business interruptions, costs of delay, or for any special, indirect, incidental, or consequential costs or damages. Such costs may include, but are not limited to, loss of time, loss of revenue, loss of use, wages, salaries, commissions, lodging, meals, towing, hydraulic fluid, or any other incidental cost.

All products purchased by Curry Supply from outside vendors shall be covered by the warranty offered by that respective manufacturer only. Curry Supply does not participate in, or obligate itself to, any such warranty.

18-Dec-24

Curry Supply reserves the right to make changes in design or improvement upon its products without imposing upon itself the same upon its products theretofore manufactured.

This warranty will apply to all Curry Supply manufactured components/structures and upfit workmanship shipped from Curry Supply's factory. The warranty is for the use of the original owner only and is not transferable without prior written permission from Curry Supply.

Curry Supply After-Sales Contact Information:

Phone: (800) 345-2829

Email: service@currysupply.com

Mailing Address: 1477 DeGol Industrial Drive, Hollidaysburg, PA 16648

THIS WARRANTY IS EXPRESSLY IN LIEU OF ANY OTHER WARRANTIES, EXPRESS OR IMPLIED, INCLUDING ANY WARRANTY OF MERCHANTABILITY OR FITNESS FOR A PARTICULAR PURPOSE. REMEDIES UNDER THIS WARRANTY ARE LIMITED TO THE PROVISION OF MATERIAL AND SERVICES, AS SPECIFIED HEREIN. CURRY SUPPLY COMPANY IS NOT RESPONSIBLE FOR INCIDENTAL OR CONSEQUENTIAL DAMAGES.

EXCEPT AS STATED, THERE IS NO WARRANTY, EXPRESS OR IMPLIED, IN CONNECTION WITH THE DESIGN, MANUFACTURE, SALE OR USE OF THE MACHINERY, ACCESSORIES, EQUIPMENT AND PARTS SOLD BY CURRY SUPPLY CO. CURRY SUPPLY COMPANY'S LIABILITY ON ITS WARRANTY SHALL IN NO EVENT EXCEED THE COST OF THE ITEM OF SALE.



For technical help or parts, please have the serial number available and call our customer service 800.345.2829