

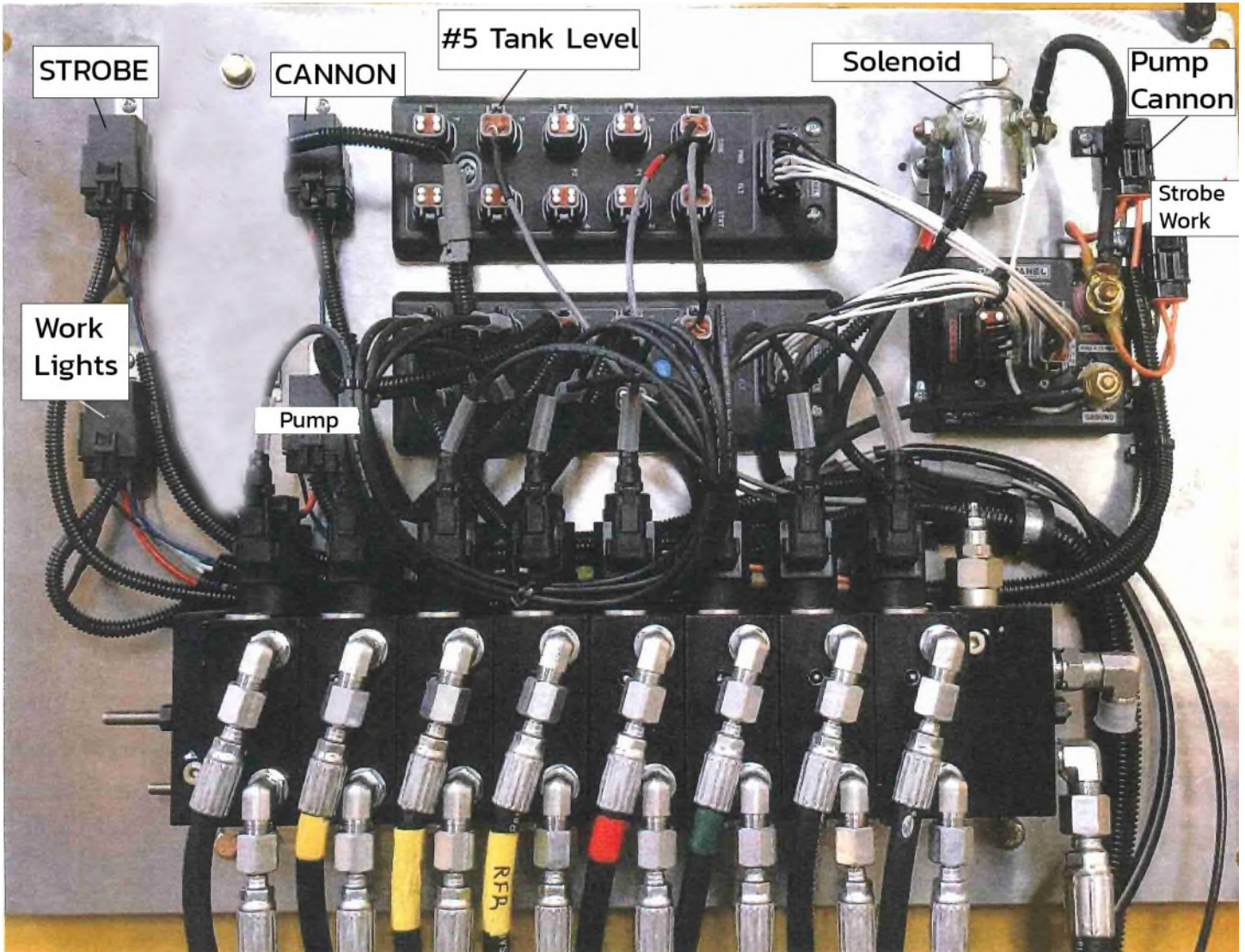
Water Truck Off Road Rigid Schematics

Hydraulic Box Open Picture SCH1-1	Page 2
Hydraulic Valve System SCH2-1	Page 3
Hydraulic Valves 2S, 3R, 2 Front Spray Heads & Level Sensor SCH2-2	Page 4
Hydraulic Valve System 2 side, 3 rear, and Level Sensor SCH2-3	Page 5
2 Line Dump Cylinder Connections SCH3-1	Page 6
4 Line Dump Cylinder Connections SCH3-2	Page 7
Chassis Harness Connection Overview SCH4-1	Page 8
Wire Harness Diagram SCH5-1	Page 9
Wire Harness Diagram SCH5-2	Page 10
Rear Wiring ID Picture SCH6-1	Page 11
Hale Primer Wiring SCH7-1	Page 12
Elkhart Nitro Water Cannon SCH8-1	Page 13
Elkhart Nitro Joystick Electric SCH8-2	Page 14
Elkhart Nitro Position Sensor SCH8-3	Page 15
Elkhart Nitro Monitor Harness SCH8-4	Page 16
Elkhart Nitro Connector Pin Diagram SCH8-5	Page 17
Cemex Level, Dump & Cannon Wiring Diagram SCH9-1	Page 18
Cemex Level, Dump & Cannon Wiring Diagram SCH9-2	Page 19
Cemex Level, Dump & Cannon Wiring Diagram SCH9-3	Page 20

CAUTION

PLEASE CONTACT CURRY SUPPLY COMPANY BEFORE ATTEMPTING ANY CHANGES TO THE ELECTRICAL SYSTEMS. DOING SO MAY CAUSE EQUIPMENT DAMAGE OR VOID WARRANTY.

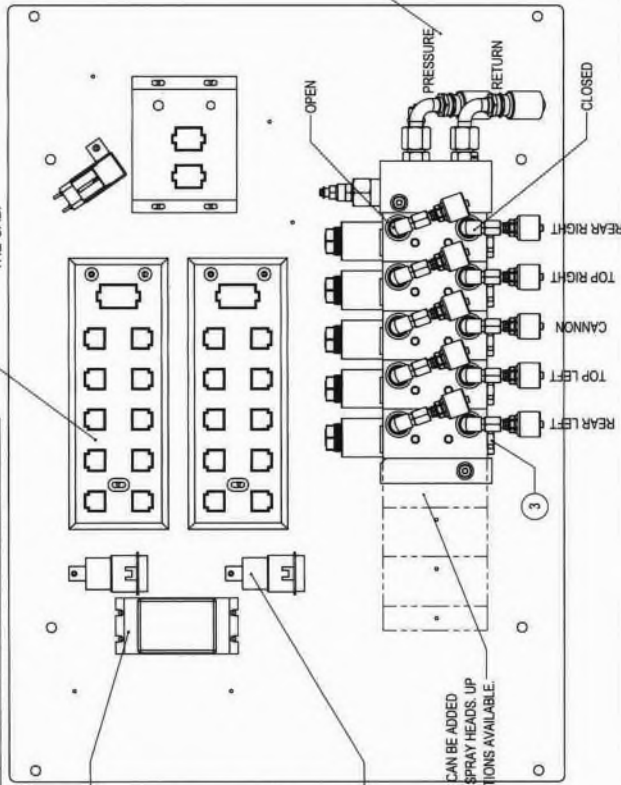
HYDRAULIC BOX OPEN VIEW



ITEM NO.	QTY.	PART NO.	STOCK DESC.
1	5	805314219	VALVE, SOLENOID, SV10-24-01-00-00-B-00
2	5	171149519	24V DE COIL, M16-24D-28W-DE
3	5	11169108	VALVE, CHECK, RPC06-5-00 PO
4	5	920000619	PLUG, CAVITY, NCS060
5	5	11195193	MVB10-W-LH-6S
6	10	6801-4-6	FITTING, 1/4 JIC, 3/8 MOR, 90 DEG, STEEL
7	1	11169337	MVB10-E
8	1	11235610	INLET WICAVITY FOR REDUCING VALVE
9	1	83020488	VALVE, REDUCING, PRMP PRMP 084-EN-1-00-35
10	1	DP-34044-5-100	OUTPUT BLOCK (COMPUTER)
11	1	DP-34044-1	INPUT/OUTPUT COMBO BLOCK
12	2	6400-8	FITTING, 1/2" MJ - 1/2" MB
13	1	6401-6-4	FITTING, 3/8" MB - 1/4" MP, STEEL
14	1	H2F2	FITTING, PLUG, 1/4" COUPLING - FP
15	1	DP-37055-2	2 CONNECTOR POWER SPLITTER
16	2	G25179-08008X	FITTING, 1/2" HOSE - 1/2" FJ SWIVEL, 90 DEG SHORT, STEEL
17	2	H41388541	RELAY, 24V, WATER PROOF, 10/20A
18	1	784623	FUSE HOLDER, IN-LINE, ATO/ATC
19	1	1584-3300	OFF ROAD HYD. VALVE BOX
20	10	G25170-0404X	SPRAY HEAD HOSE CONNECTIONS
-	-	4657-0120	FITTING, 1/4" HOSE - 1/4" FJ SWIVEL, STEEL
23	1	PST-DC29903-W	HOSE, 1/4" HYDRAULIC, MEDIUM PRESSURE
24	2	52MNJB	CONVERTER, 12/24V - 9V DC
			SOCKET, WATER PROOF RELAY, WITH LEADS

ITEMS NOT SHOWN			
QTY.	PART NO.	STOCK DESC.	NOTES
1	DP-33026-3-002	KEYPAD/DISPLAY, 24V DC	LOCATED ON THE BACK OF THE CONTROL PAD
2	DP-34042-402	TERMINAL RESISTOR	
2	M-D185-XDBKIT	18 PIN CONNECTOR KIT	
1	DP-38022-400	PSF-2 CONNECTOR KIT	
1	RAM-202U	RAM MOUNT, 2.5" BASE	
1	RAM-107BU	RAM MOUNT, 1.5" RUGGED BASE	
1	RAM-201U	RAM MOUNT, DOUBLE SOCKET ARM	
1		PVAS ASSEMBLY KIT	ROOT CONNECTOR KIT PART NUMBERS DIFFER BASED ON THE AMOUNT OF VALVES USED.
3	7072-77501-7540080	Y-CABLE, 2' LENGTH	

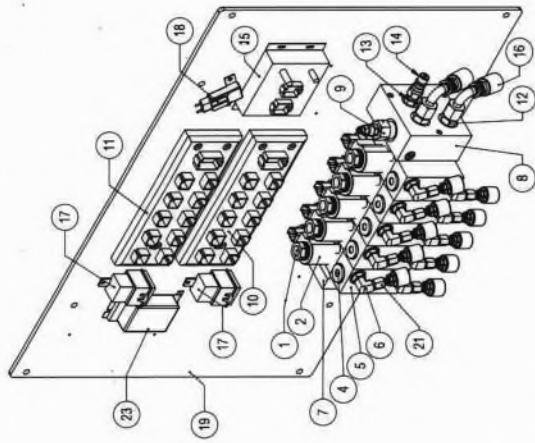
COMBO OUTPUT BLOCK IS USED WITH A TANK FILL INDICATOR. WHEN A TANK IS EQUIPPED WITH A DIGITAL LEVEL INDICATOR, TOGGING THE BOTTOM RIGHT BUTTON ON THE CONTROL PANEL BRINGS UP THE FILL DISPLAY ON THE CONTROLLER IN THE CAB.



POWER CONVERTER USED ON CAT MODEL

RELAYS SHOULD NEVER BE INSTALLED UPSIDE DOWN. DOUBLE CHECK CONNECTIONS TO MAKE SURE UNIT IS WEATHER SEALED.

VALVE SECTIONS CAN BE ADDED FOR ADDITIONAL SPRAY HEADS. UP TO 8 CONFIGURATIONS AVAILABLE.



ITEMS 1, 2, 3, 4, 5, 6, 7, & 8 ARE TIED TO THE SPRAY HEAD COUNT. THIS ASSEMBLY MAKES UP THE CONTROL SYSTEM FOR (1) SPRAY HEAD UNIT.

OPEN CIRCUIT ALLOWS THE SPRAY HEAD TO BE OPEN AND PUSH WATER. CLOSED CIRCUIT HOLDS HYDRAULIC PRESSURE TO KEEP THE SPRAY HEAD CLOSED. CHECK VALVE (3) KEEPS THE SYSTEM PRESSURE FROM BLEEDING OFF WHEN VALVE IS CLOSED.

Curry Supply Co.

TITLE: HYDRAULIC VALVE SYSTEM; OFF ROAD WATER, 5 VALVE

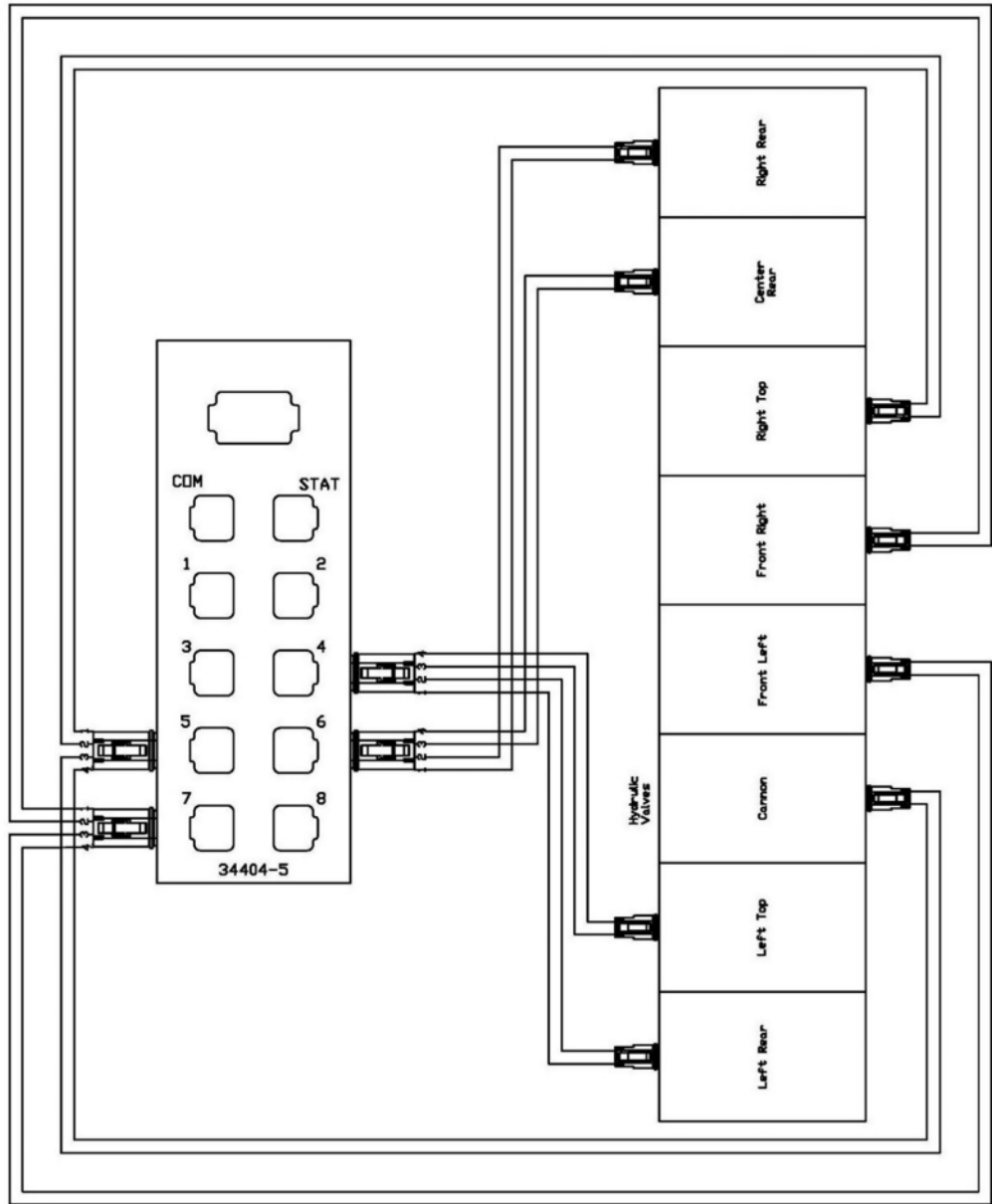
PART NO.	1634-7800	
TOLERANCES:	UNLESS OTHERWISE SPECIFIED:	
FRACATIONAL:	1/16"	
ANGULAR:	1/2°	
THREE PLACE DECIMAL:	±.005"	
DATE	11/02/20	DATE
BY	MIC	BY
CHECKED	MIC	CHECKED
DRAWN BY	ASM	DRAWN BY
APPROVED	ASM	APPROVED
SCALE	AS SHOWN	
UNIT	IN	
SIZE	B	
DRAWING NO.	1634-7800	
REV	0	
WEIGHT:		

DO NOT SCALE DRAWING

PROPRIETARY AND CONFIDENTIAL
THE INFORMATION CONTAINED IN THIS DRAWING IS THE PROPERTY OF CURRY SUPPLY COMPANY. ANY REPRODUCTION IN PART OR AS A WHOLE WITHOUT THE WRITTEN PERMISSION OF CURRY SUPPLY COMPANY IS PROHIBITED.

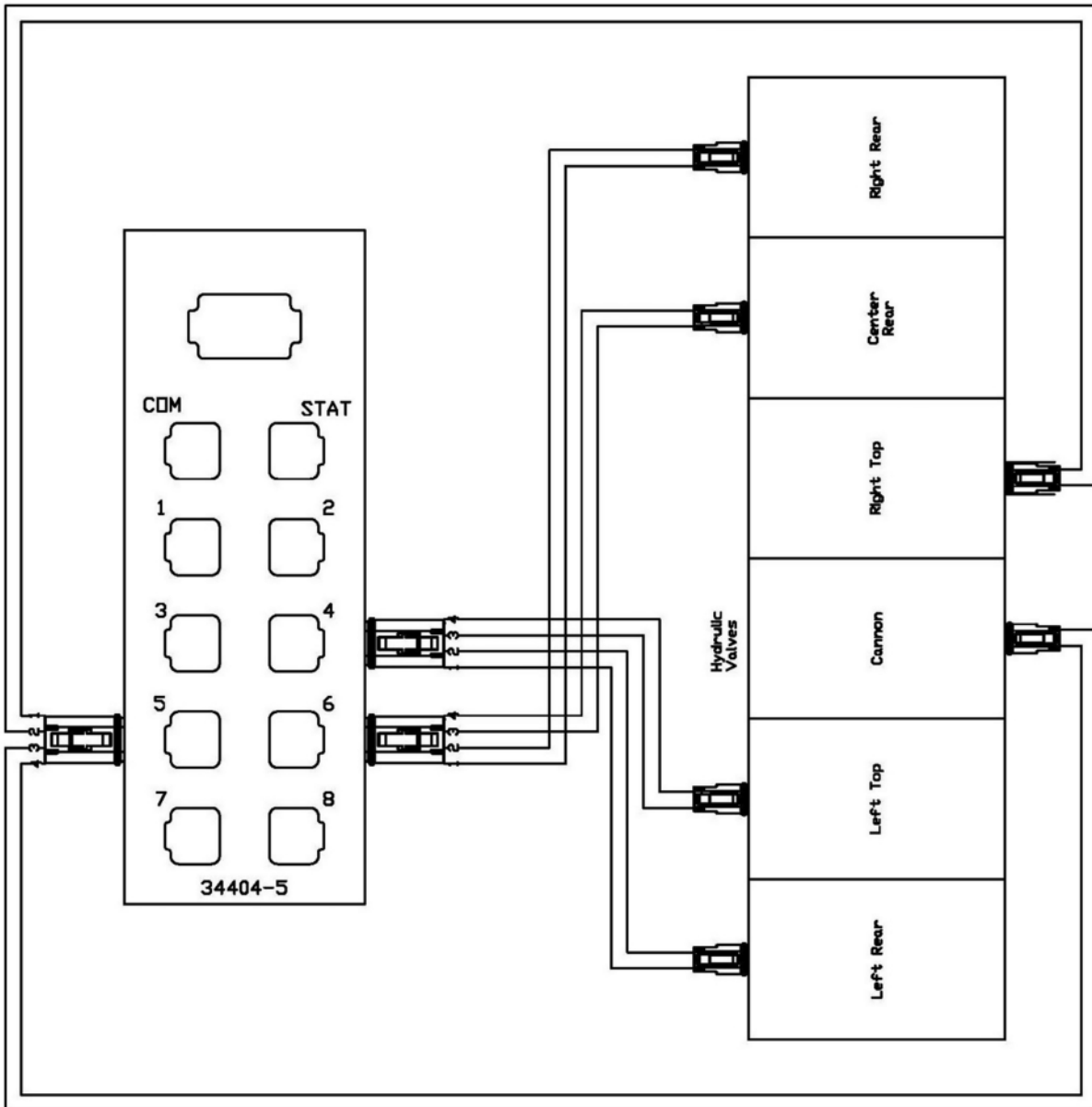


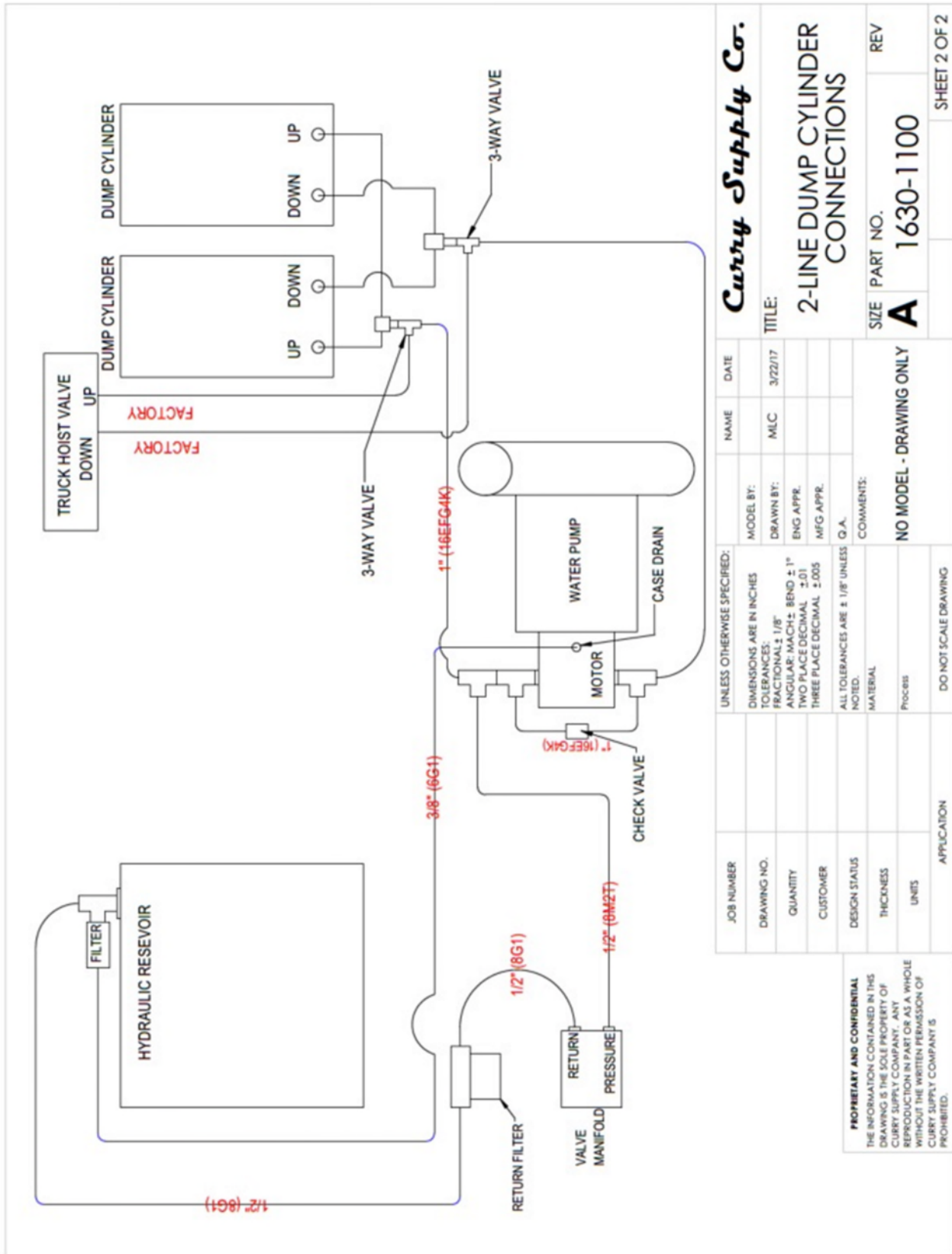
TITLE:	ARTIC 2 SIDES 3 REAR 2 FRONT W/ LEVEL SENSER	DATE:	9/24/2023
SIZE:	DRAWING NO. A3 P187-1023	REV:	REV 2
SCALE:	NIS	ISSUE NO.:	AS
		SHEET:	3 OF 4



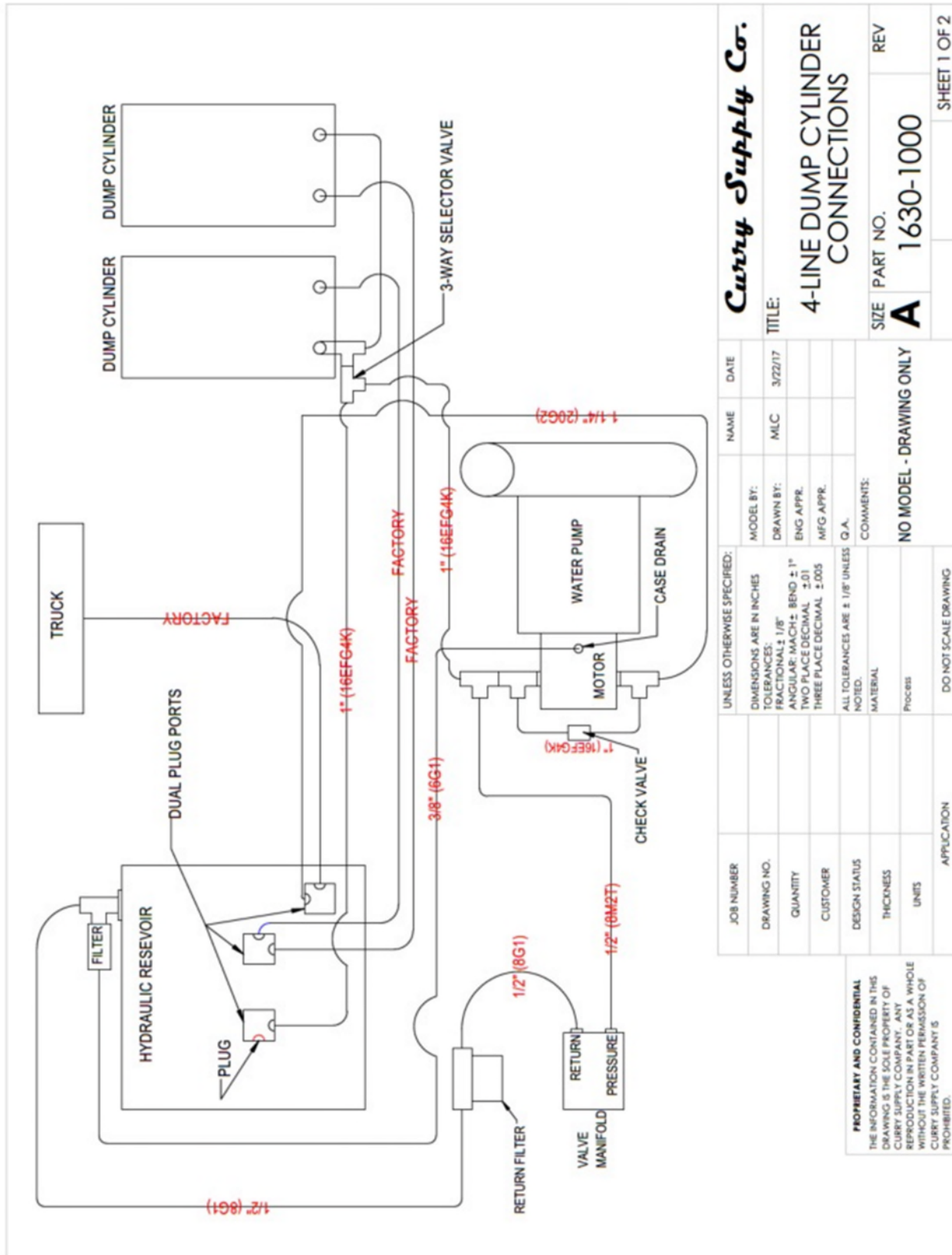


TITLE: ARTIC 2 SIDES 3 REAR W/ LEVEL SENSOR	DATE: 5/24/2023
SIZE A3	DRAWING NO. 2187-1025
SCALE: NTS	DRAWN BY: JS
	SHEET 2 OF 4



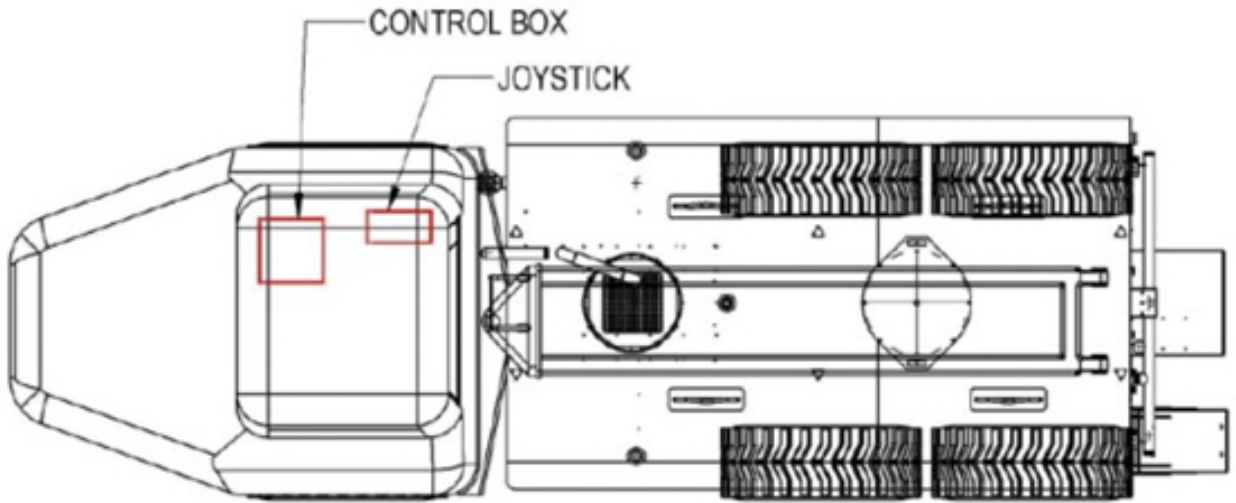


Curry Supply Co.		NAME	DATE
TITLE:		MODEL BY:	DATE
2-LINE DUMP CYLINDER CONNECTIONS		DRAWN BY:	3/22/17
SIZE	PART NO.	ENG APPR.	
A	1630-1100	MFG APPR.	
REV		COMMENTS:	
		NO MODEL - DRAWING ONLY	
UNLESS OTHERWISE SPECIFIED:		DO NOT SCALE DRAWING	
JOB NUMBER	DESIGN STATUS	ALL TOLERANCES ARE ± 1/8" UNLESS Q.A.	
DRAWING NO.	THICKNESS	MATERIAL	
QUANTITY	UNITS	PROCESS	
CUSTOMER	APPLICATION		
<p>PROPRIETARY AND CONFIDENTIAL</p> <p>THE INFORMATION CONTAINED IN THIS DRAWING IS THE SOLE PROPERTY OF CURRY SUPPLY COMPANY. ANY REPRODUCTION IN PART OR AS A WHOLE WITHOUT THE WRITTEN PERMISSION OF CURRY SUPPLY COMPANY IS PROHIBITED.</p>			
SHEET 2 OF 2			

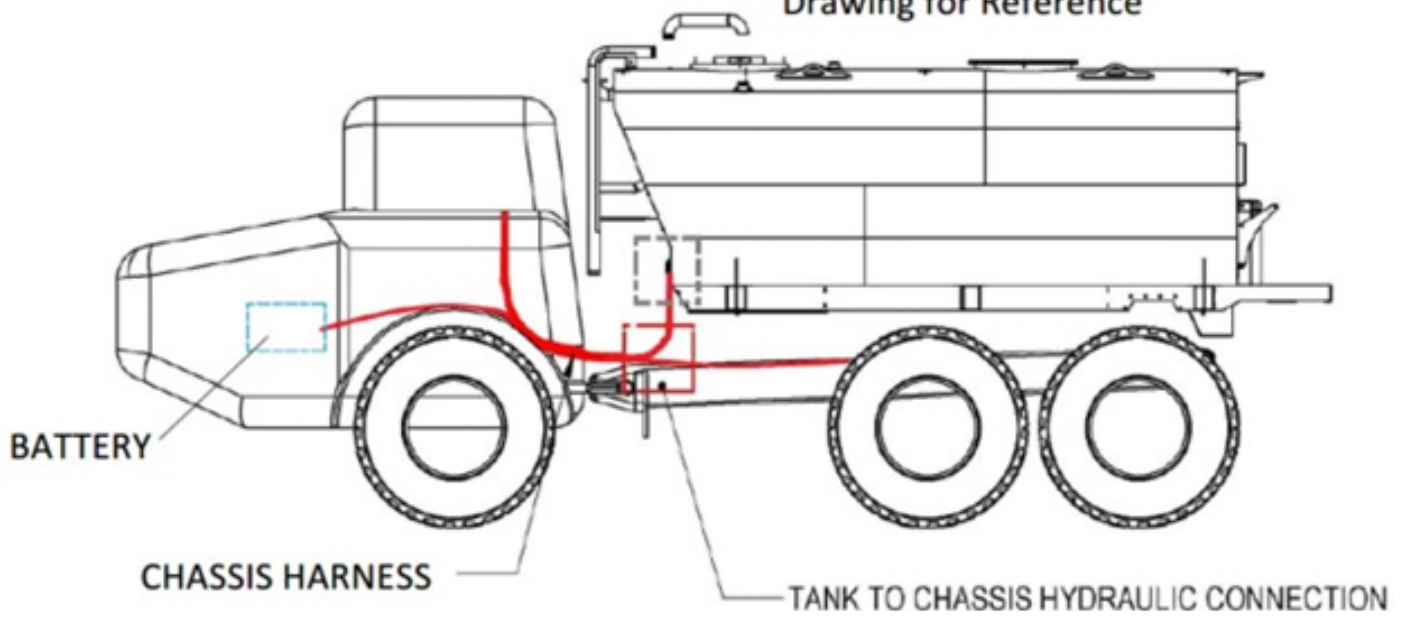


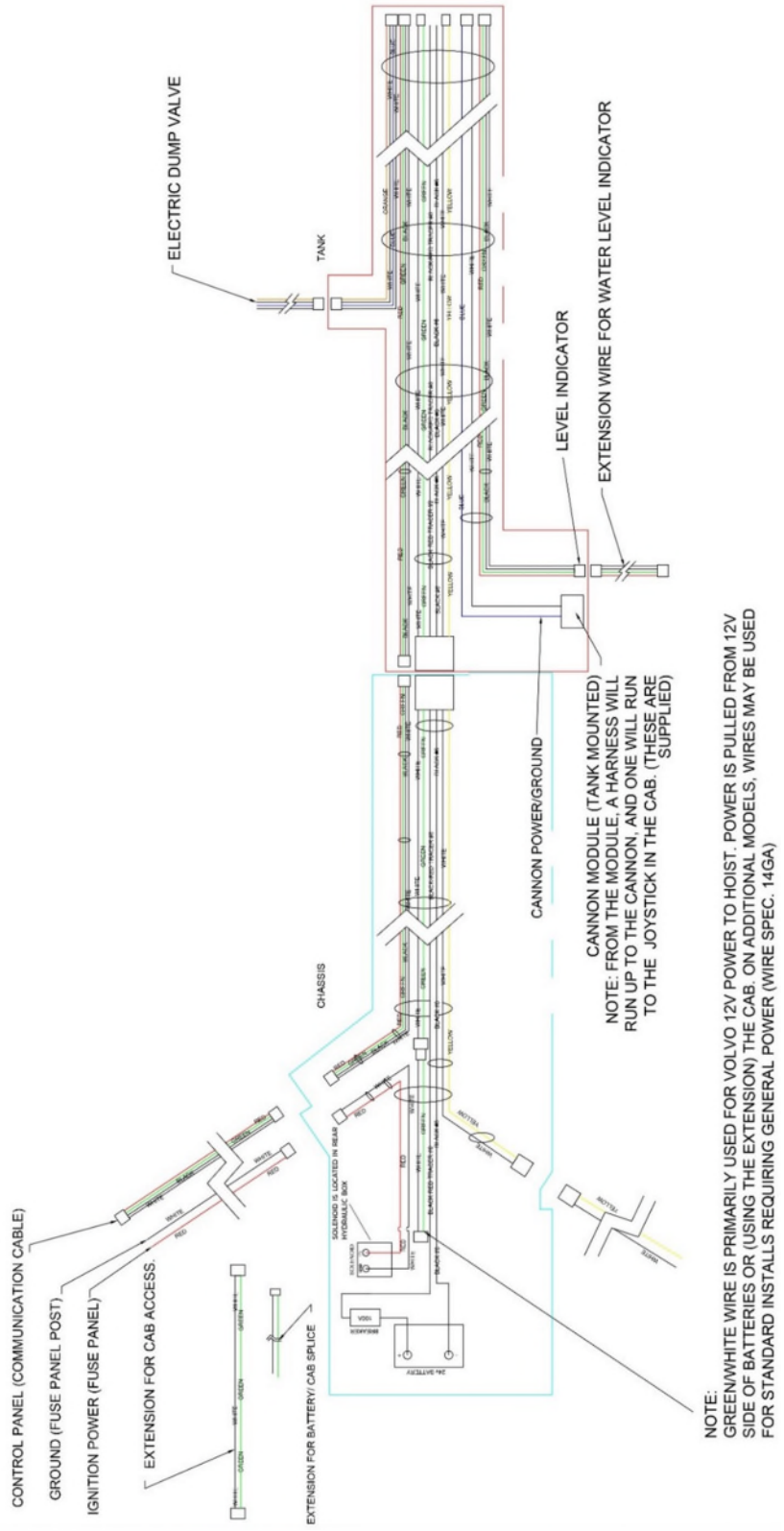
Curry Supply Co.		NAME	DATE
TITLE:		MODEL BY:	3/22/17
4-LINE DUMP CYLINDER CONNECTIONS		DRAWN BY:	MLC
SIZE	PART NO.	ENG APPR.	
A	1630-1000	MFG APPR.	
REV		COMMENTS:	
		NO MODEL - DRAWING ONLY	
UNLESS OTHERWISE SPECIFIED:		DIMENSIONS ARE IN INCHES	
TOLERANCES:		FRACTIONAL: 1/8"	
ANGULAR: MACH: BEND ± 1°		TWO PLACE DECIMAL ± 0.01	
THREE PLACE DECIMAL ± 0.005		ALL TOLERANCES ARE ± 1/8" UNLESS Q.A.	
NOTED.		MATERIAL	
PROCESS		DO NOT SCALE DRAWING	
APPLICATION			

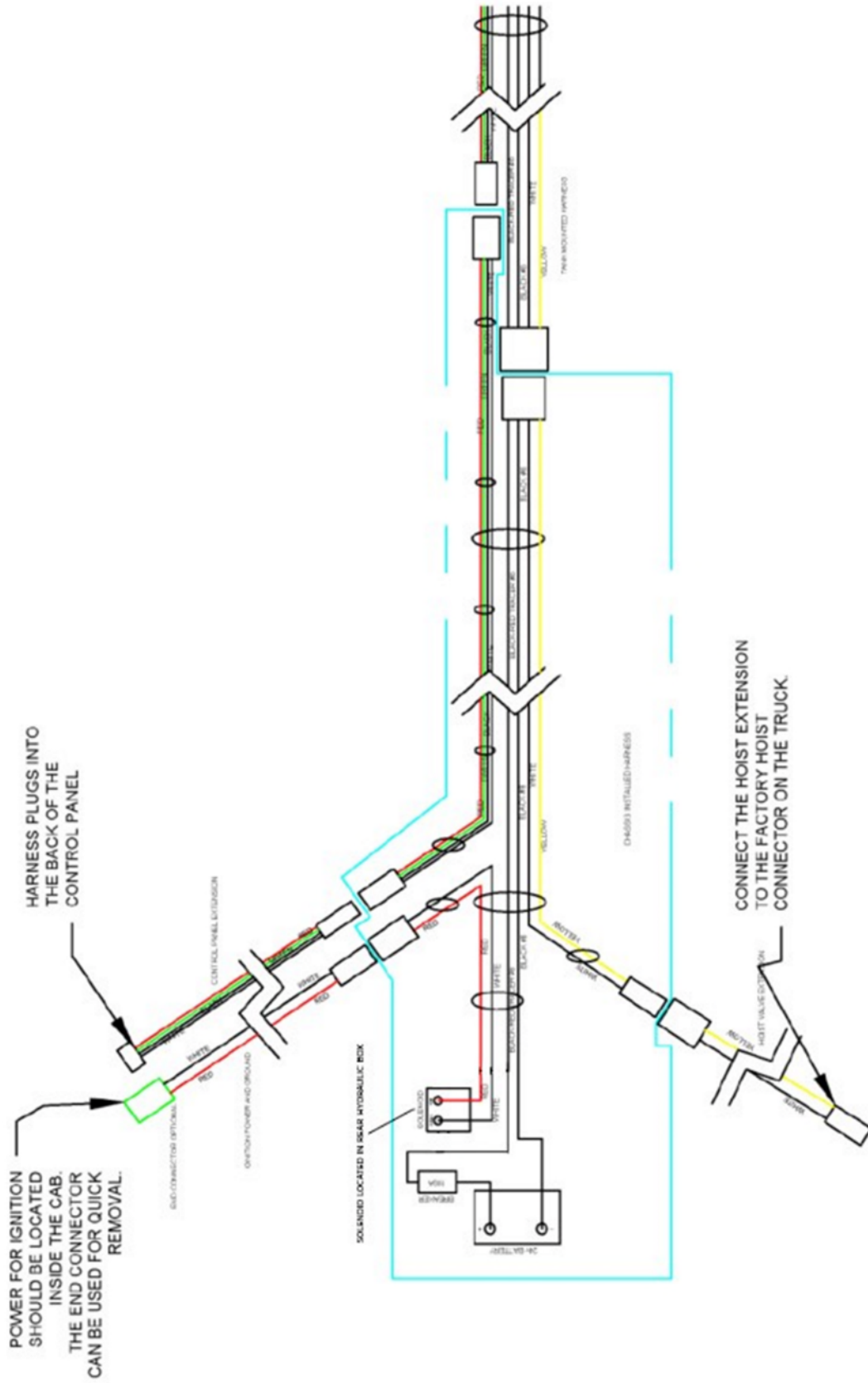
PROPRIETARY AND CONFIDENTIAL
 THE INFORMATION CONTAINED IN THIS DRAWING IS THE SOLE PROPERTY OF CURRY SUPPLY COMPANY. ANY REPRODUCTION IN PART OR AS A WHOLE WITHOUT THE WRITTEN PERMISSION OF CURRY SUPPLY COMPANY IS PROHIBITED.

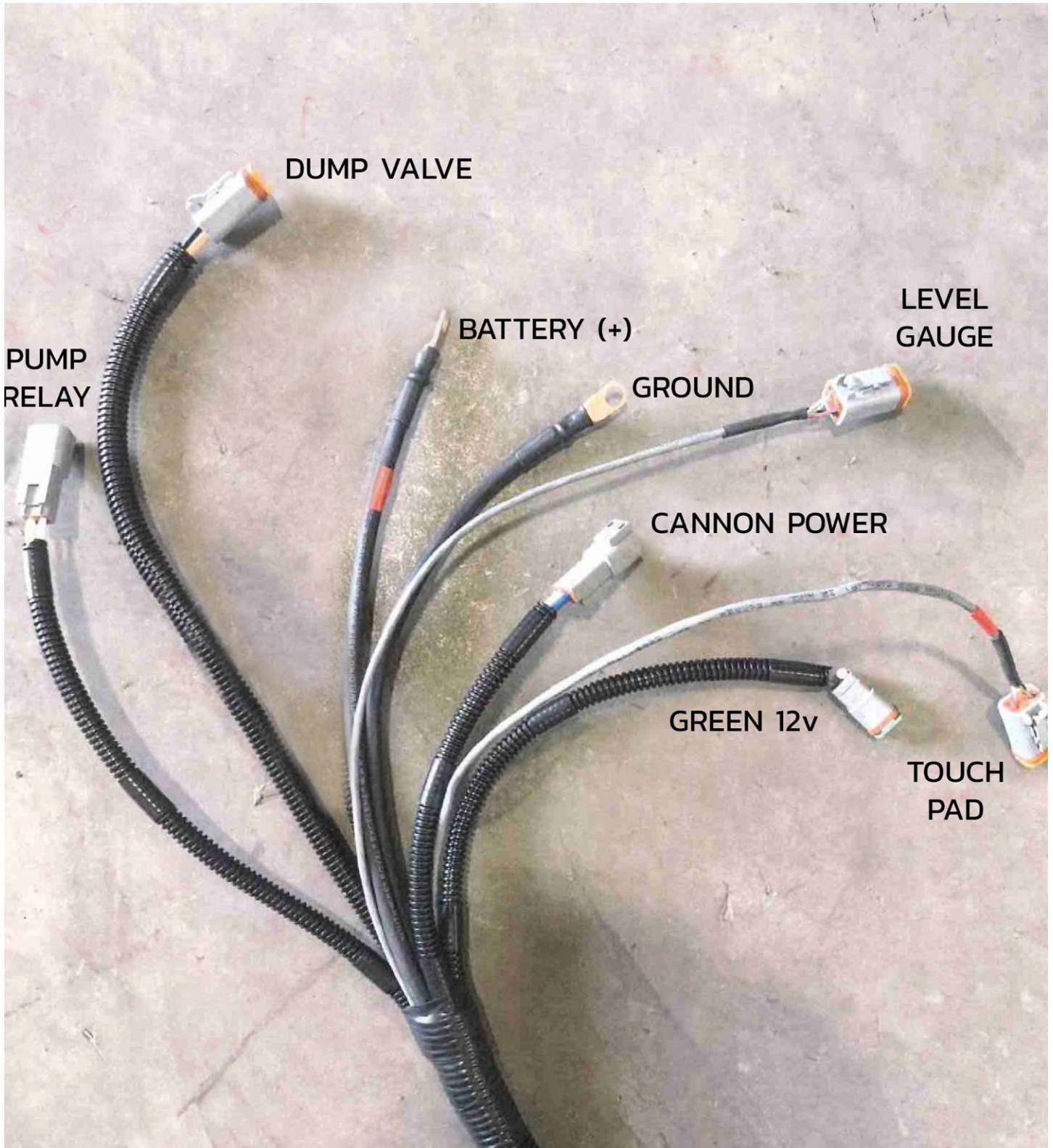


Drawing for Reference



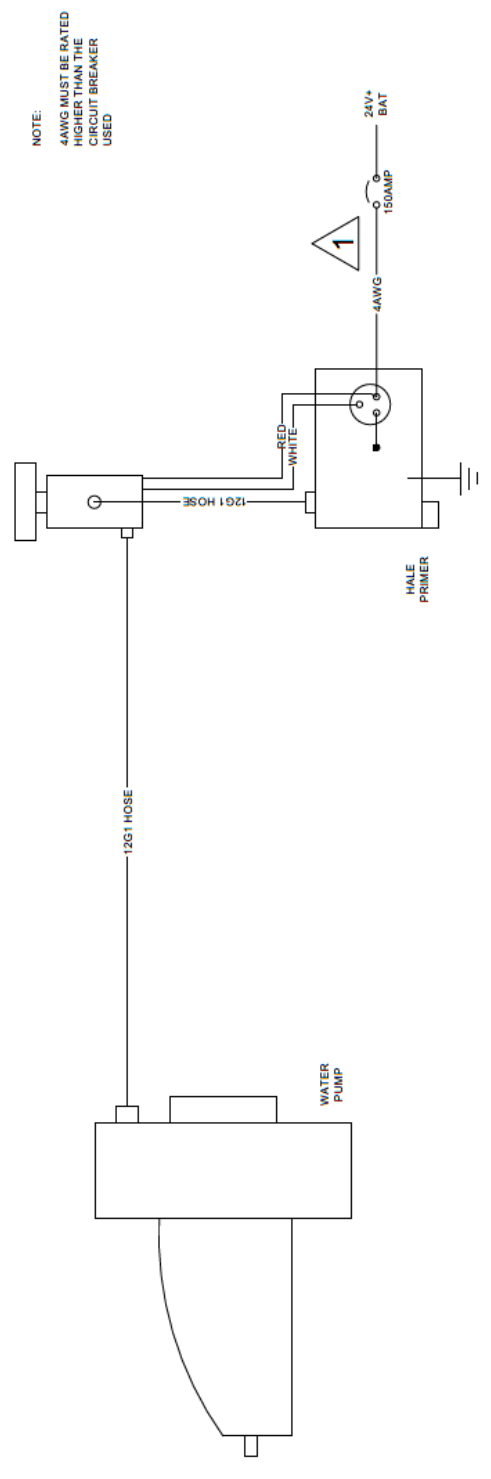




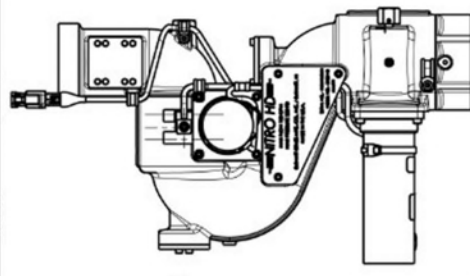




TITLE: HALE PRIMER INSTALL HYDREMA	DATE: 5/16/24
SIZE: DRAWING NO. 2087-1030	REV: 1
SCALE: NTS	DRAWN BY: JS
	SHEET 2 OF 2

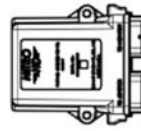


REV.	ZONE	DESCRIPTION	BY	ECN NUMBER
B	C7, C8	ADDED EXTENSION HARNESS BETWEEN THE JOYSTICK AND MODULE	KAP	170512

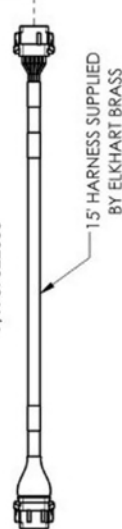


NITRO HD MONITOR
P/N 00008101

NITRO HD MODULE
P/N 81824001



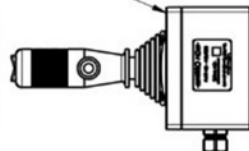
MODULE TO MONITOR HARNESS
P/N 37522000



15' HARNESS SUPPLIED BY ELKHART BRASS

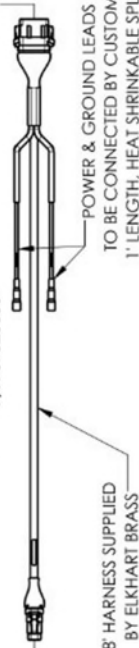
OPTIONAL: REMOVE JOYSTICK FROM ENCLOSURE AND USE AS PANEL MOUNT

NITRO HD JOYSTICK
P/N 41067000



10' HARNESS

MODULE TO JOYSTICK HARNESS
P/N 37523000



POWER & GROUND LEADS TO BE CONNECTED BY CUSTOMER. 1' LENGTH, HEAT SHRINKABLE SPLICES

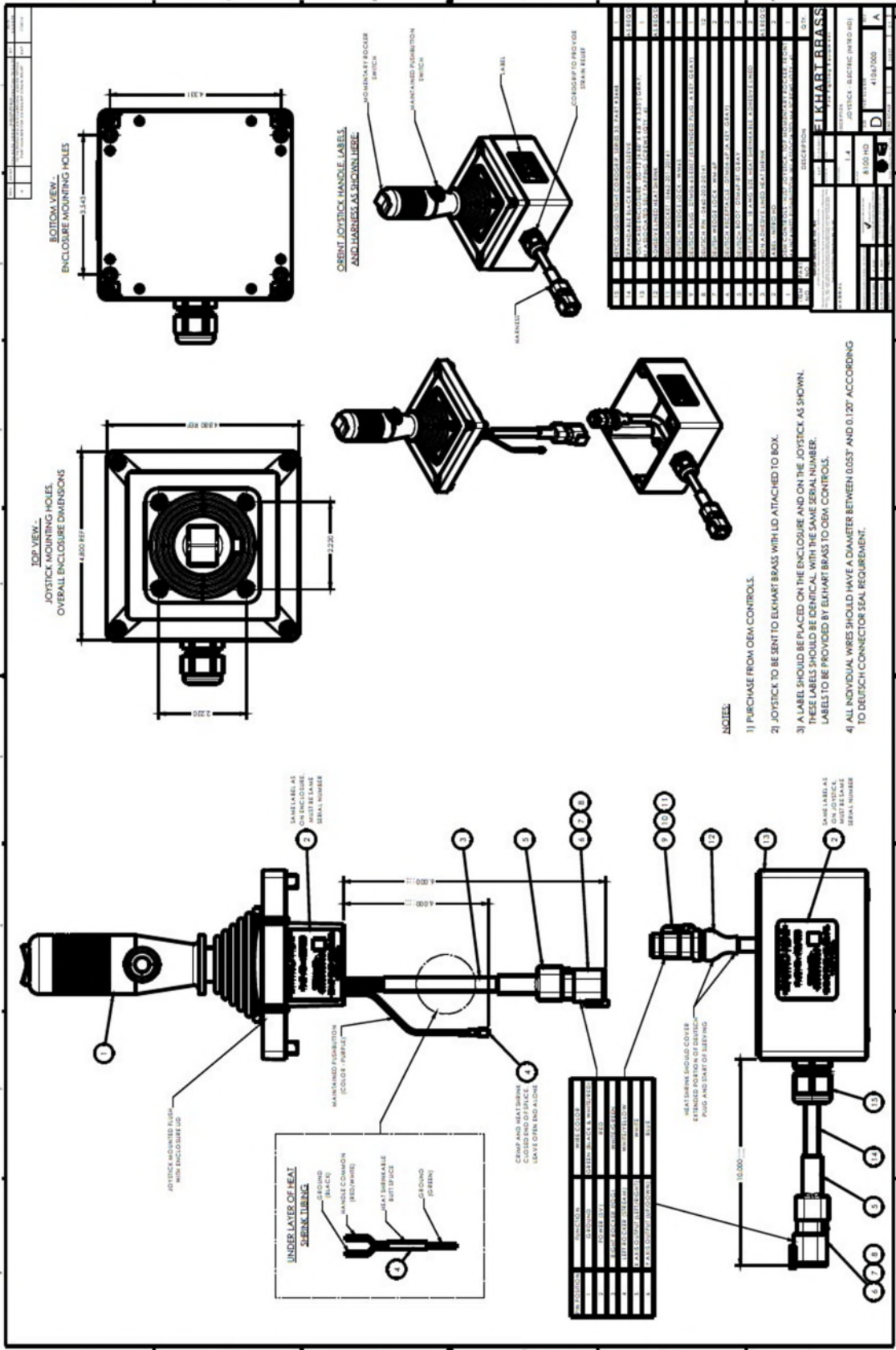
8' HARNESS SUPPLIED BY ELKHART BRASS

NOTES:
DRAWING NOT TO SCALE.
FOR REFERENCE ONLY.

OPTIONAL: EXTEND LENGTH BETWEEN MODULE AND JOYSTICK UP TO 75 FEET BY ADDING UP TO 5 EXTENSION HARNESSES, P/N 37527000 HERE.

ELKHART BRASS MFG CO. INC. #1502 Elkhart Brass Mfg. Co., Inc. Elkhart, IN, USA This part and all other components hereon are the sole and exclusive property of Elkhart Brass Mfg. Co., Inc. This part may be returned to Elkhart Brass Mfg. Co., Inc. for credit. Copyright © 2012 by Elkhart Brass Mfg. Co., Inc.		DRAWN BY: KAP CHECKED BY:	DATE: 12/01/2016
MATERIAL: N/A		RIGHT L&R:	13.3
TOLERANCE (UNLESS OTHERWISE SPECIFIED): 1 PLACE DEC: ±.12" 2 PLACE DEC: REF. ANGLES: ±1°		ASSEMBLY THIRD ANGLE PROJECTION	
UNLESS OTHERWISE SPECIFIED DIMENSIONS ARE IN INCHES. DO NOT SCALE PRINT! INTERPRET DIMENSIONS AND TOLERANCES PER ASME Y14.5M 1994. CAD MODEL: 8100 HD		DESCRIPTION: NITRO HD (KIT #1)	
CAD SCALE: 1:1		SIZE: B	CATALOG NO.: 8100 HD
SHEET 1 OF 1		REV. B	

NITRO HD LAYOUT DRAWING, KIT #1



ELKHART BRASS

FIRE FIGHTING EQUIPMENT A SAFE FLEET BRAND

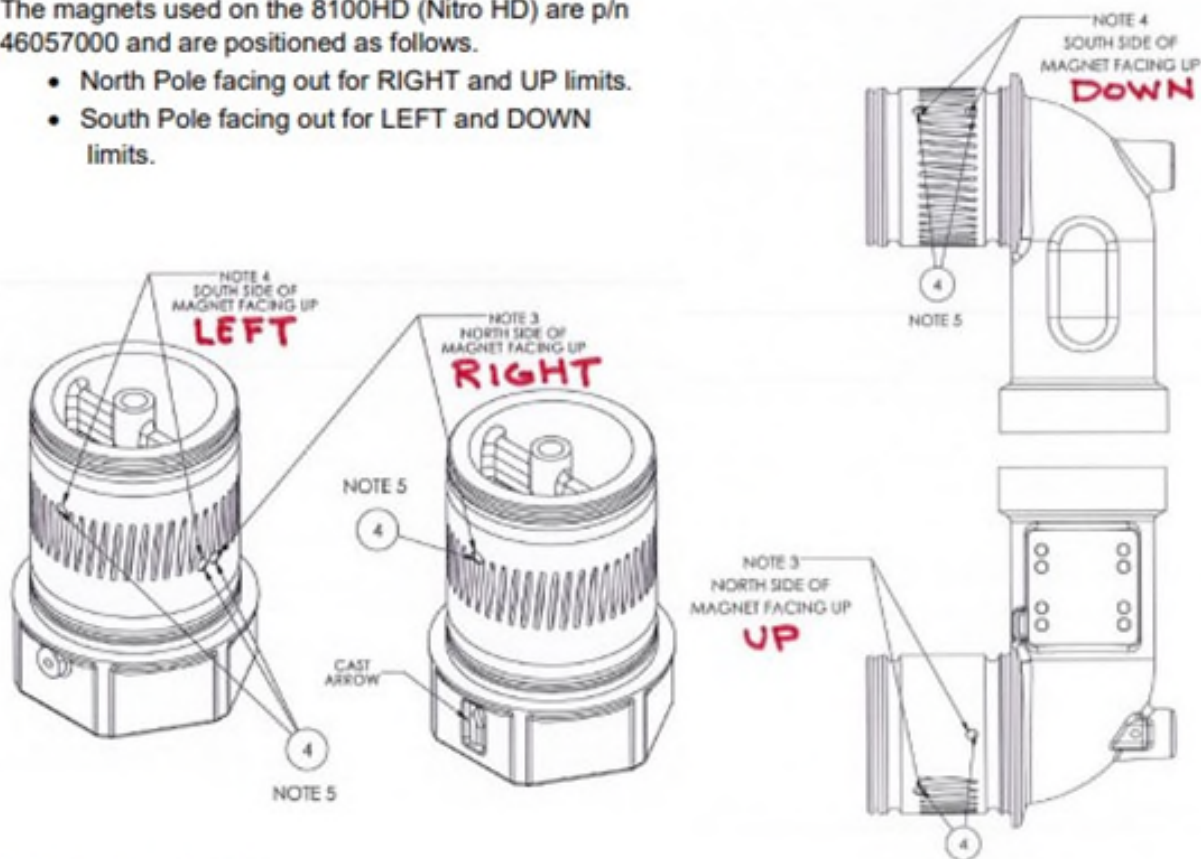
8100HD (Nitro HD) position sensor testing information

The position sensor used for controlling Vertical and Horizontal travel on the 8100HD (Nitro HD) is p/n 67566000.

- The sensors RED wire should have +5 volts on it.
- The sensors BLACK wire should be GROUND.
- The sensors GREEN wire should have;
 - Around +2.5v when no magnet is detected.
 - It should drop below +2.5 volts (around +1.5v) when detecting the North Pole of a magnet (RIGHT or UP).
 - It should go above +2.5 volts (around +3.5v) when detecting the South Pole of a magnet (LEFT or DOWN).

The magnets used on the 8100HD (Nitro HD) are p/n 46057000 and are positioned as follows.

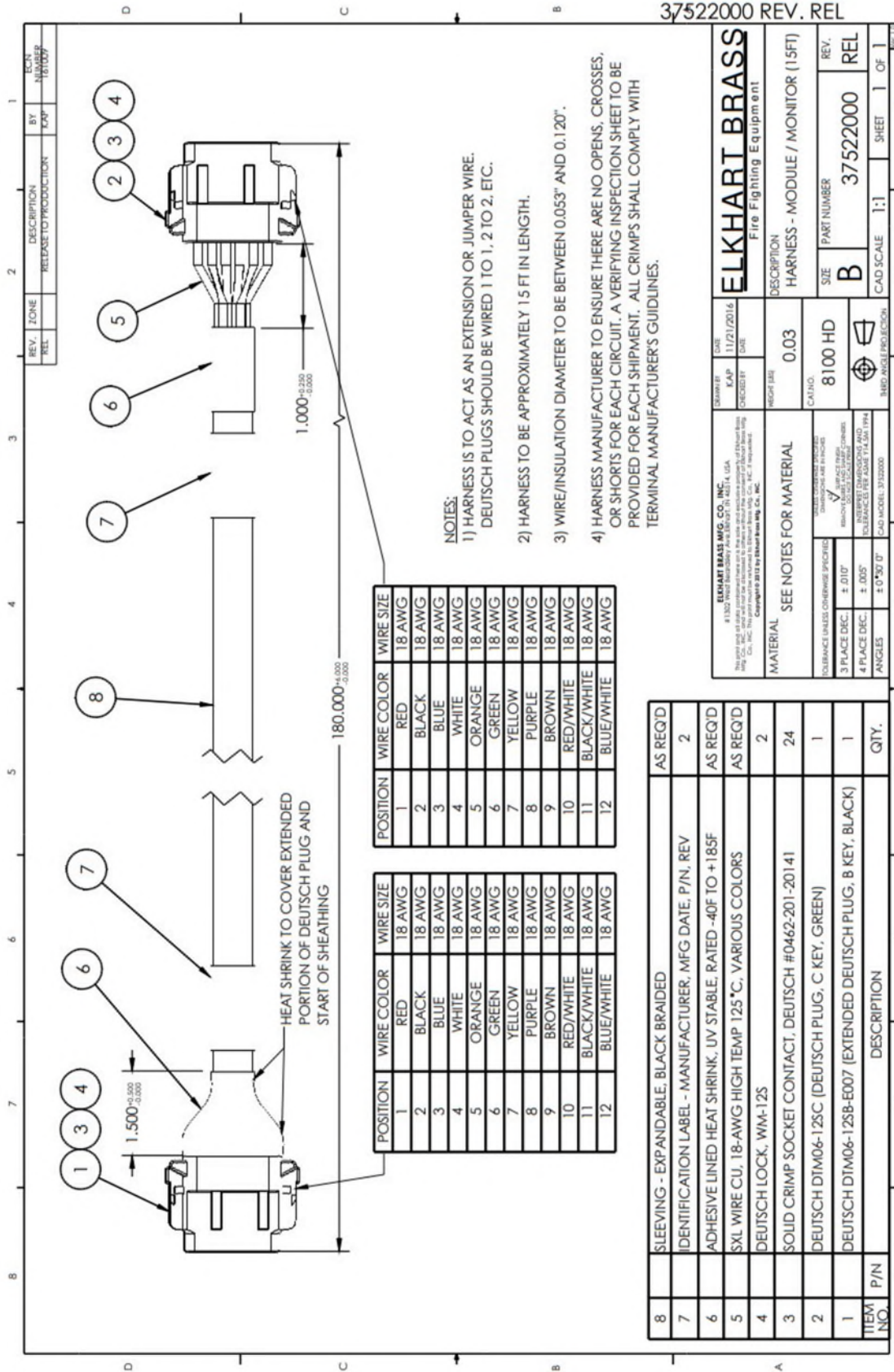
- North Pole facing out for RIGHT and UP limits.
- South Pole facing out for LEFT and DOWN limits.



Last Revised 01/23/23

Elkhart Brass Mfg. Co., Inc. 1302 W. Beardsley Avenue • Elkhart, Indiana 46514 • 1-574-295-8330 • 1-800-346-0250
www.elkhartbrass.com

37522000 REV. REL



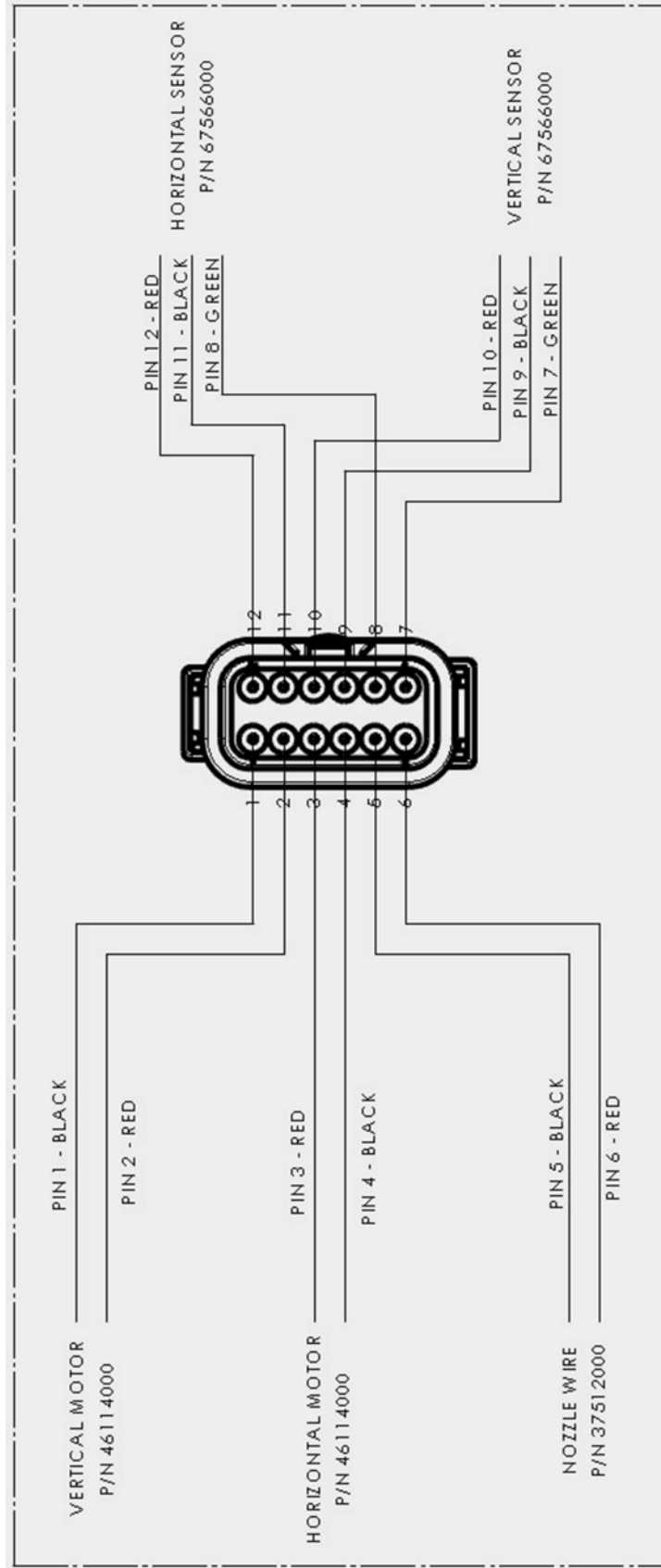
- NOTES:
- 1) HARNESS IS TO ACT AS AN EXTENSION OR JUMPER WIRE. DEUTSCH PLUGS SHOULD BE WIRED 1 TO 1, 2 TO 2, ETC.
 - 2) HARNESS TO BE APPROXIMATELY 15 FT IN LENGTH.
 - 3) WIRE/INSULATION DIAMETER TO BE BETWEEN 0.053" AND 0.120".
 - 4) HARNESS MANUFACTURER TO ENSURE THERE ARE NO OPENS, CROSSES, OR SHORTS FOR EACH CIRCUIT. A VERIFYING INSPECTION SHEET TO BE PROVIDED FOR EACH SHIPMENT. ALL CRIMPS SHALL COMPLY WITH TERMINAL MANUFACTURER'S GUIDELINES.

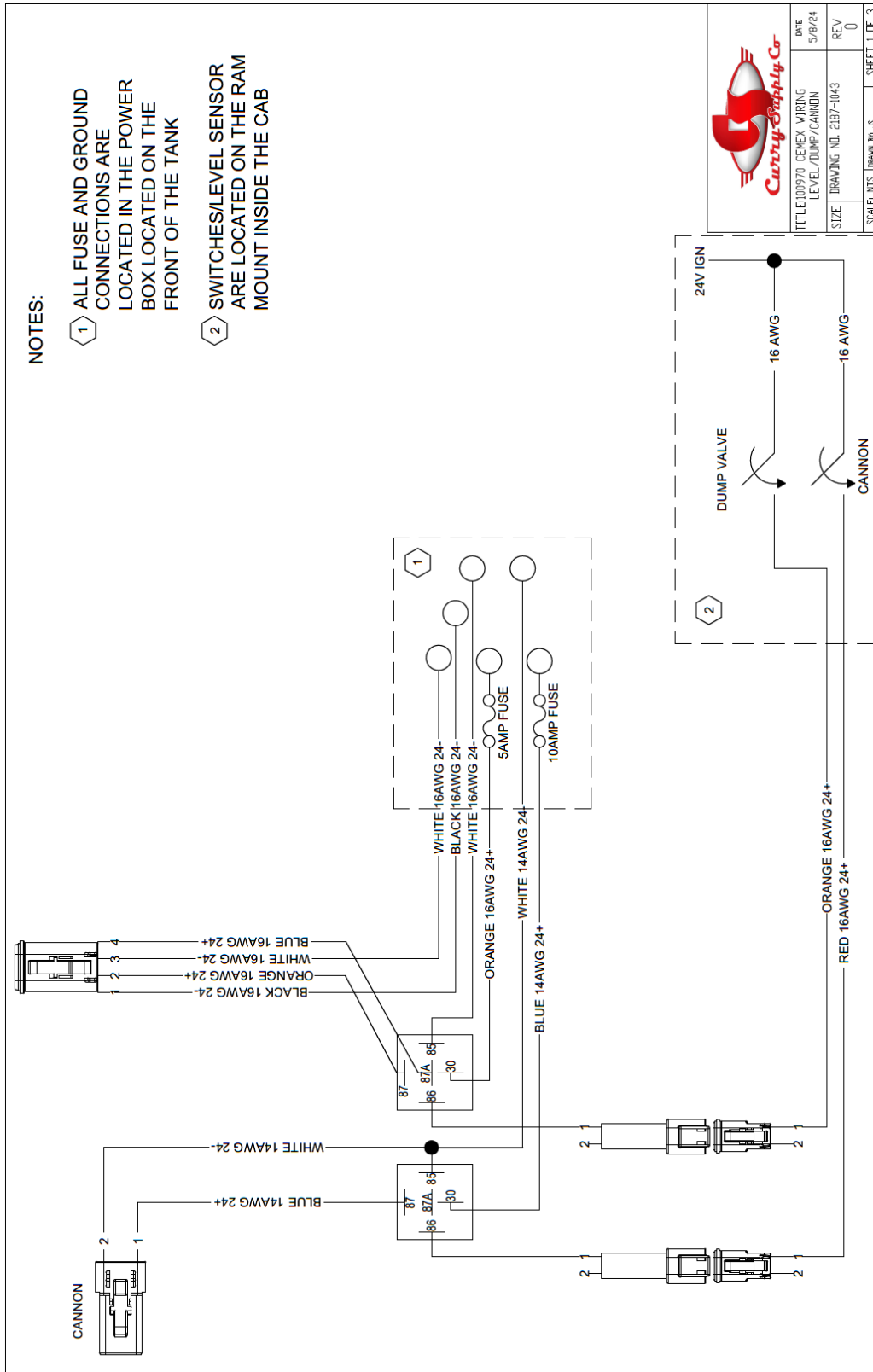
POSITION	WIRE COLOR	WIRE SIZE
1	RED	18 AWG
2	BLACK	18 AWG
3	BLUE	18 AWG
4	WHITE	18 AWG
5	ORANGE	18 AWG
6	GREEN	18 AWG
7	YELLOW	18 AWG
8	PURPLE	18 AWG
9	BROWN	18 AWG
10	RED/WHITE	18 AWG
11	BLACK/WHITE	18 AWG
12	BLUE/WHITE	18 AWG

POSITION	WIRE COLOR	WIRE SIZE
1	RED	18 AWG
2	BLACK	18 AWG
3	BLUE	18 AWG
4	WHITE	18 AWG
5	ORANGE	18 AWG
6	GREEN	18 AWG
7	YELLOW	18 AWG
8	PURPLE	18 AWG
9	BROWN	18 AWG
10	RED/WHITE	18 AWG
11	BLACK/WHITE	18 AWG
12	BLUE/WHITE	18 AWG

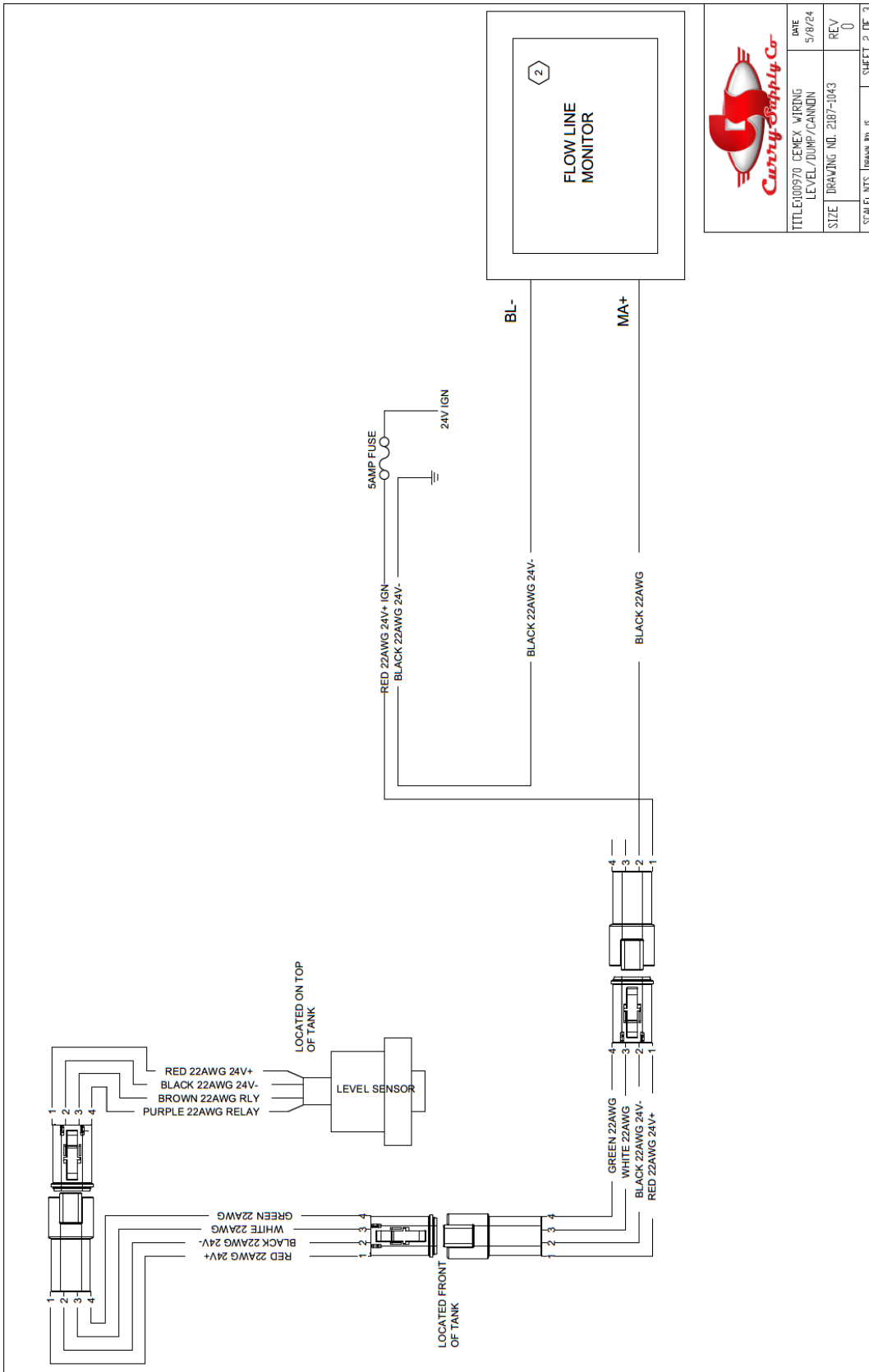
ITEM NO.	P/N	DESCRIPTION	QTY.
8		SLEEVING - EXPANDABLE, BLACK BRAIDED	AS REQ'D
7		IDENTIFICATION LABEL - MANUFACTURER, MFG DATE, P/N, REV	2
6		ADHESIVE LINED HEAT SHRINK, UV STABLE, RATED -40F TO +185F	AS REQ'D
5		SXL WIRE CU, 18-AWG HIGH TEMP 125 °C, VARIOUS COLORS	AS REQ'D
4		DEUTSCH LOCK, WM-125	2
3		SOLID CRIMP SOCKET CONTACT, DEUTSCH #0462-201-20141	24
2		DEUTSCH DTM06-125C (DEUTSCH PLUG, C KEY, GREEN)	1
1		DEUTSCH DTM06-125B-E007 (EXTENDED DEUTSCH PLUG, B KEY, BLACK)	1

ELKHART BRASS MFG. CO., INC. <small>#1300 ELKHART, INDIANA, USA This part may be a duplicate of a part already in the parts list of another part. Elkhart Brass Mfg. Co., Inc. The part number is not to be used for any other part. Copyright © 2013 by Elkhart Brass Mfg. Co., Inc.</small>		DATE: 11/21/2016 DRAWN BY: KAP CHECKED BY:	ELKHART BRASS Fire Fighting Equipment
MATERIAL: SEE NOTES FOR MATERIAL		WEIGHT: 0.03 CALING: 8100 HD	DESCRIPTION: HARNESS - MODULE / MONITOR (15FT)
TOLERANCE UNLESS OTHERWISE SPECIFIED: DIMENSIONS ± 0.010" HOLE DIMENSIONS ± 0.010" ANGLES ± 0°30' 0"		PART NUMBER: B SIZE: 37522000	REV. REL
3 PLACE DEC. ± 0.005" 4 PLACE DEC. ± 0.0005"		IMPROVED REDUCTION	CAD SCALE: 1:1 SHEET 1 OF 1

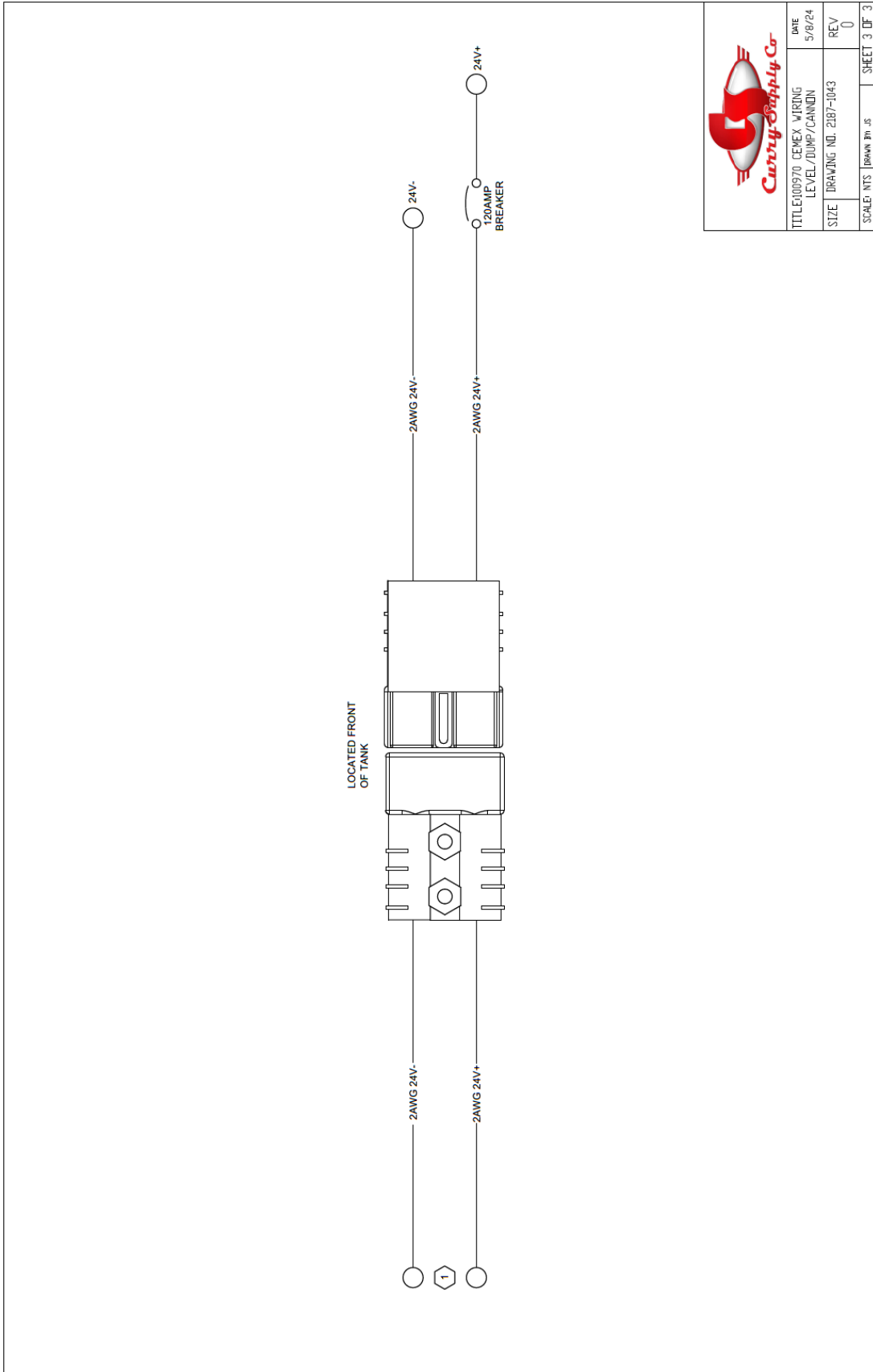




TITLE	00970 CEHEX WIRING LEVEL/DUMP/CANNON
DATE	5/8/24
SIZE	DRAWING NO. 2187-1043
SCALE	NTS
DRAWN BY	JS
SHEET	1 OF 3



TITLE	00970 CEMEX WIRING LEVEL/DUMP/CANNON	DATE	5/8/24
SIZE	DRAWING NO. 2087-1043	REV	0
SCALE	NTS	DRAWN BY	JS
			SHEET 2 OF 3



TITLE: 100970 CEMEX WIRING LEVEL/DUMP/CANNON	DATE: 5/8/24
SIZE: DRAWING NO: 2387-1043	REV: 0
SCALE: NTS	DRAWN BY: JS
	SHEET: 3 OF 3