

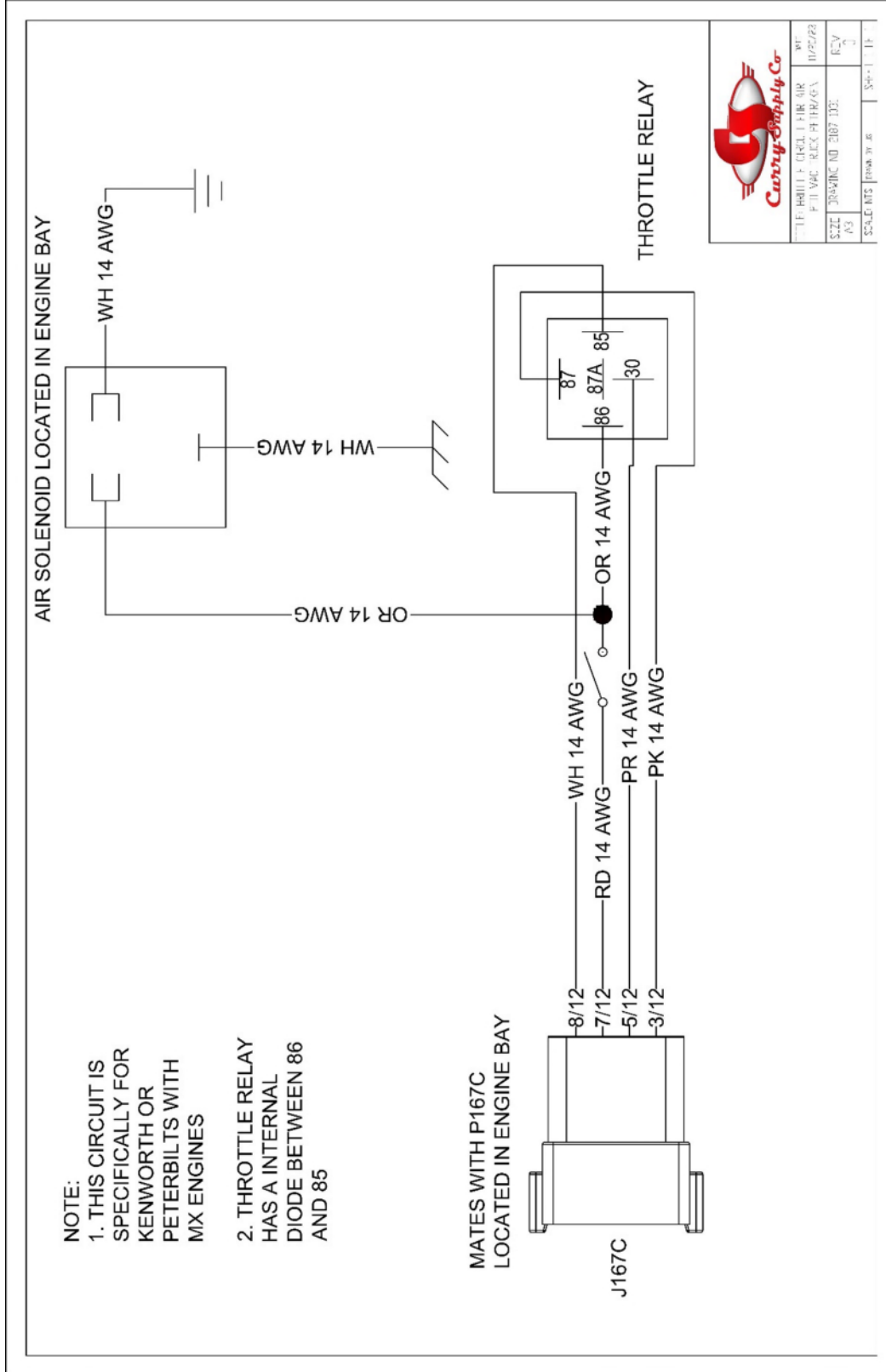

# Vacuum Truck Schematics

---

<a href="#">2187-1031 Throttle Circuit Air PTO Peter/Ken</a>	<a href="#">Page 2</a>
<a href="#">Fruitland ELIM-A-SM500LUF Vacuum Pump Diagram SCH2-1</a>	<a href="#">Page 3</a>
<a href="#">NVE 607 PRO Challenger Vacuum Pump Diagram SCH3-1</a>	<a href="#">Page 4</a>
<a href="#">NVE 607 PRO Challenger Vacuum Pump Parts List SCH3-2</a>	<a href="#">Page 5</a>
<a href="#">NVE 607 PRO Challenger Vacuum Pump Parts List SCH3-3</a>	<a href="#">Page 6</a>
<a href="#">Masport 400W Vacuum Pump Diagram SCH4-1</a>	<a href="#">Page 7</a>
<a href="#">Masport 400W Vacuum Pump Parts List SCH4-2</a>	<a href="#">Page 8</a>

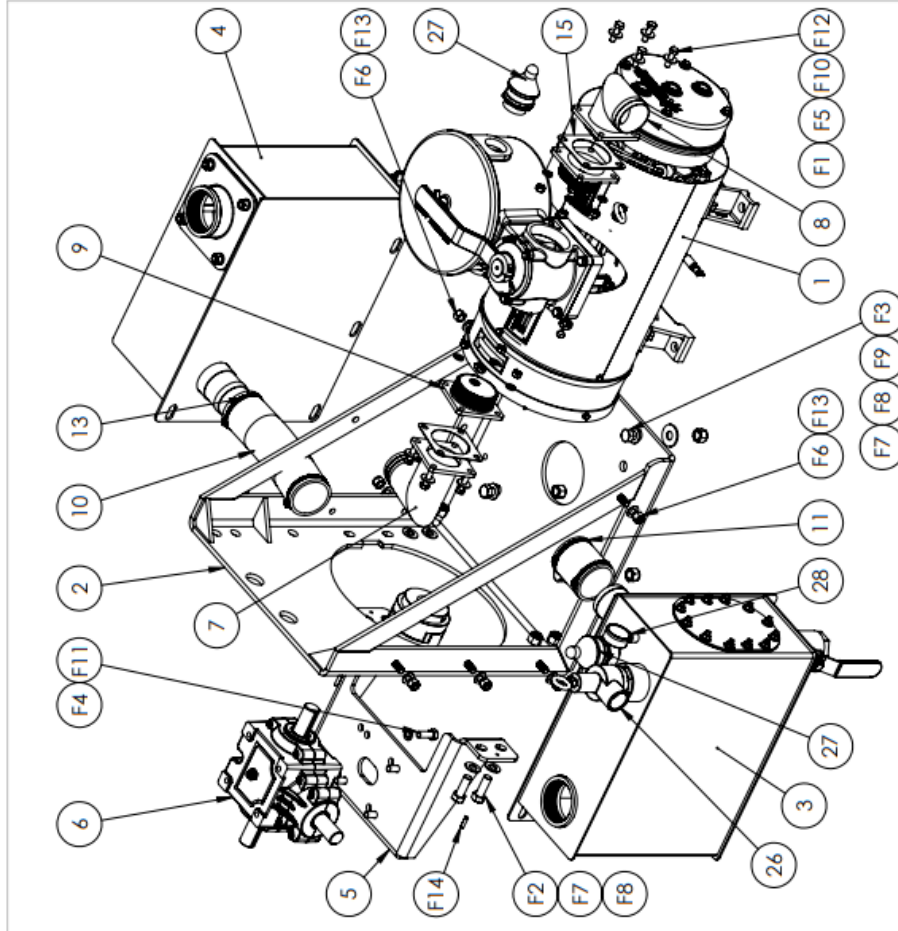
## CAUTION

PLEASE CONTACT CURRY SUPPLY BEFORE ATTEMPTING ANY CHANGES TO THE ELECTRICAL SYSTEMS. DOING SO MAY CAUSE EQUIPMENT DAMAGE OR VOID WARRANTY.

TITLE	WIRING DIAGRAM FOR AIR FILTER	WT	
DATE	11/25/23	REV	1
SIZE	A3	SCALE	AS SHOWN

# Fruitland



ITEM #	PART #	DESCRIPTION	QTY.
1	500LUF	500LUF Vacuum Pump	1
2	RF500-SC	Pedestal Frame	1
3	RF500-S091 R1C	S09 Secondary Shut-Off (See Parts Below)	1
4	RF500-M09C	M09 Muffler Assembly	1
5	ADM09C	Angle Drive Mount	1
6	RF500-GB400	Right Angle Gear Box	1
7	FAM09C	Flange - Muffler Side	1
8	FAS09C	Flange - Secondary Shut-Off Side	1
9	FA-3NPT-M	3" NPT Flange for Diverter	2
10	FAM09-03	Rubber Hose - Ø3" x 13' Long - Muffler Side	1
11	FAS09-03	Rubber Hose - Ø3" x 4-3/4' Long - Secondary Side	1
13	HCM-091-001	Super Clamp - SCS 86-91	4
14	F190C-1250	F190 Coupling C/W 42mm Bore Flange - 1/4" Key & Insert	1
15	RF500-57	Gasket - Pump Flange	2
26	PRV-2"	Pressure Relief Valve - 2" NPT	1
27	VB	Vacuum Relief Valve - 1-1/2" NPT	2
28	PVG-2.5	Compound Pressure - Vacuum Gauge - 1/4" NPT	1
Hex Bolts			
F1	HBM-100-350	Hex Bolt - M10 x 1.5mm x 35mm Long - Z.P.	8
F2	HBI-600-170	Hex Bolt - 5/8" x 11 NC x 1-3/4" Long - Z.P.	4
F3	5/8" X2-1/4" HEX HEAD	Hex Bolt - 5/8" x 2-1/4" Long - Z.P.	4
F4	HBI-500-005	Hex Bolt - 1/2" x 13 NC x 1-3/8" Long - Z.P.	4
Hex Nuts			
F5	RF500-137A	Hex Nut - M10 x 1.5mm - Z.P.	8
F6	HNI-500-201	Nylock Hex Nut - 1/2" x 13 NC - Z.P.	8
F7	5/8" NYLOCK NUTS	Nylock Hex Nut - 5/8" x 11 NC - Z.P.	8
Washers - Flat & Lock			
F8	5/8" F/W-SAE	Flat Washer, SAE (Small) - 5/8" - Z.P.	8
F9	5/8" F/W-USS	Flat Washer, USS (Large) - 5/8" - Z.P.	4
F10	RF120-94A	Lock Washer (Split) - M10	8
F11	1/2" L/W	Lock Washer (Split) - 1/2" - Z.P.	4
F12	M10-FW	Flat Washer - M10 - Z.P.	8
F13	1/2" - F/W-SAE	Flat Washer, SAE (Small) - 1/2" - Z.P.	8
Split Pins			
F14	1/4" X 1" LG SPLIT PIN	Split Pin - 1/4" x 1" Long	2

**PART # ELIM A-SM500LUF**

**NOTES:**

1. ALL FASTENERS TO BE SUPPLIED

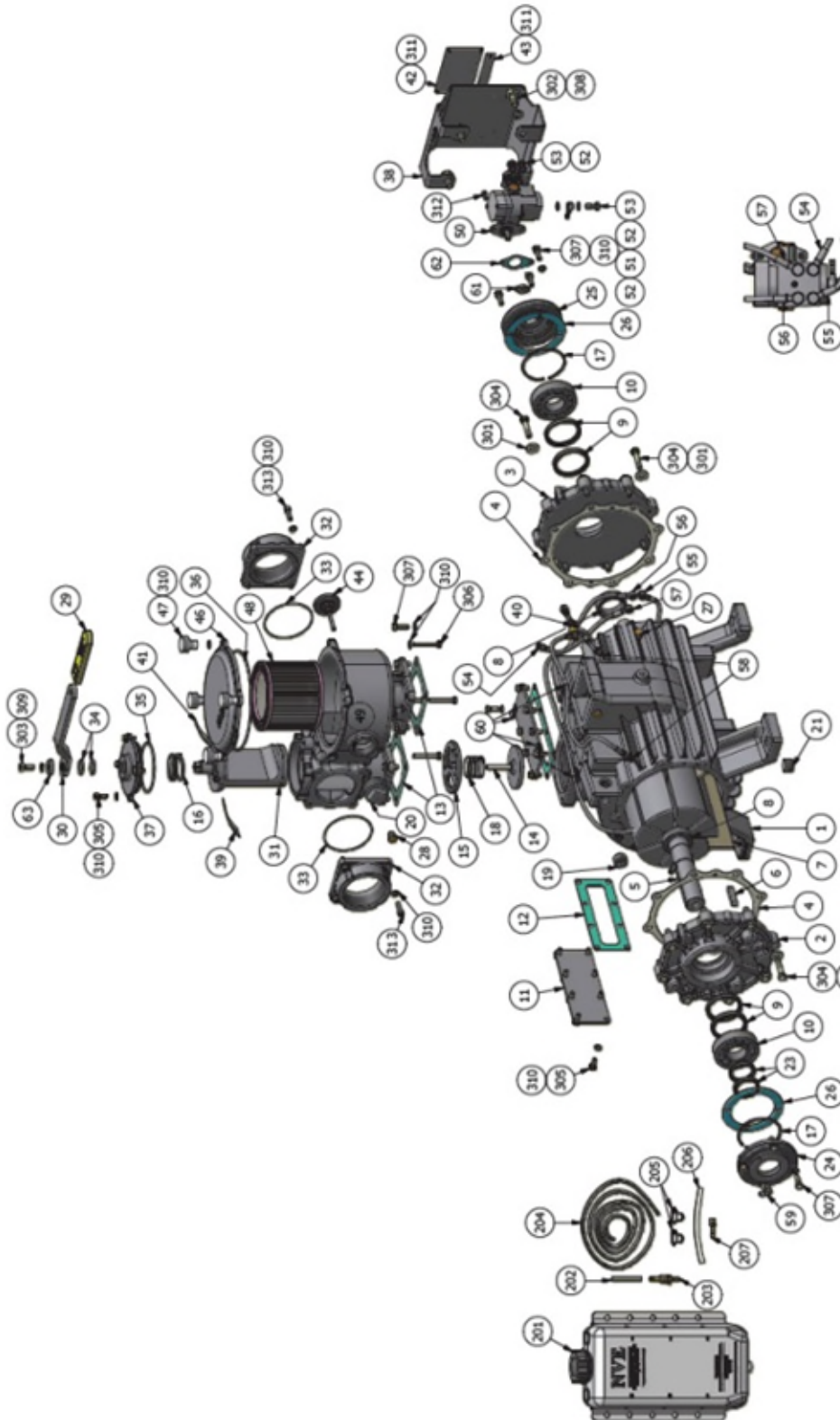
WEIGHT AS SHOWN: 801 LBS

DCR #348, REV. 1: NOTES & COMPONENTS ADDED, 04/03/10, LA  
 DCR #410, REV. 2: 05/02/11, LA  
 DCR #477, REV. 3: ADDED TITLE BLOCK & UPDATED PART #, 25/01/13, PH  
 DCR #1008, REV. 4: UPDATED HARDWARE IN BOM, 02/23/2023, LP.

		324 Lonsdale Avenue Stony Creek, Ontario Canada L8E 2W7 Tel: (905) 662-8833 Fax: (905) 662-9875
NAME	DATE	TITLE
K.A.	13/03/09	ELIM A-SM500LUF BOM
CREATED	W.D.	22/02/13
UNLESS OTHERWISE SPECIFIED: DIMENSIONS ARE IN INCHES DECIMALS SHALL BE TO 0.015 FRACTIONAL OR XX = 1/16 XX = 1/32 XXX = 1/64		
REV	DWG. NO.	SCALE: 1:12
4	ELIM A-SM500LUF	WEIGHT:--
MATERIAL		SHEET 1 OF 2

PROPRIETARY AND CONFIDENTIAL  
 THE INFORMATION CONTAINED IN THIS DRAWING IS THE SOLE PROPERTY OF FRUITLAND MANUFACTURING. ANY REPRODUCTION OR TRANSMISSION OF THIS INFORMATION IN ANY FORM OR BY ANY MEANS WITHOUT THE WRITTEN PERMISSION OF FRUITLAND INC. IS PROHIBITED.

# NVE



# NVE

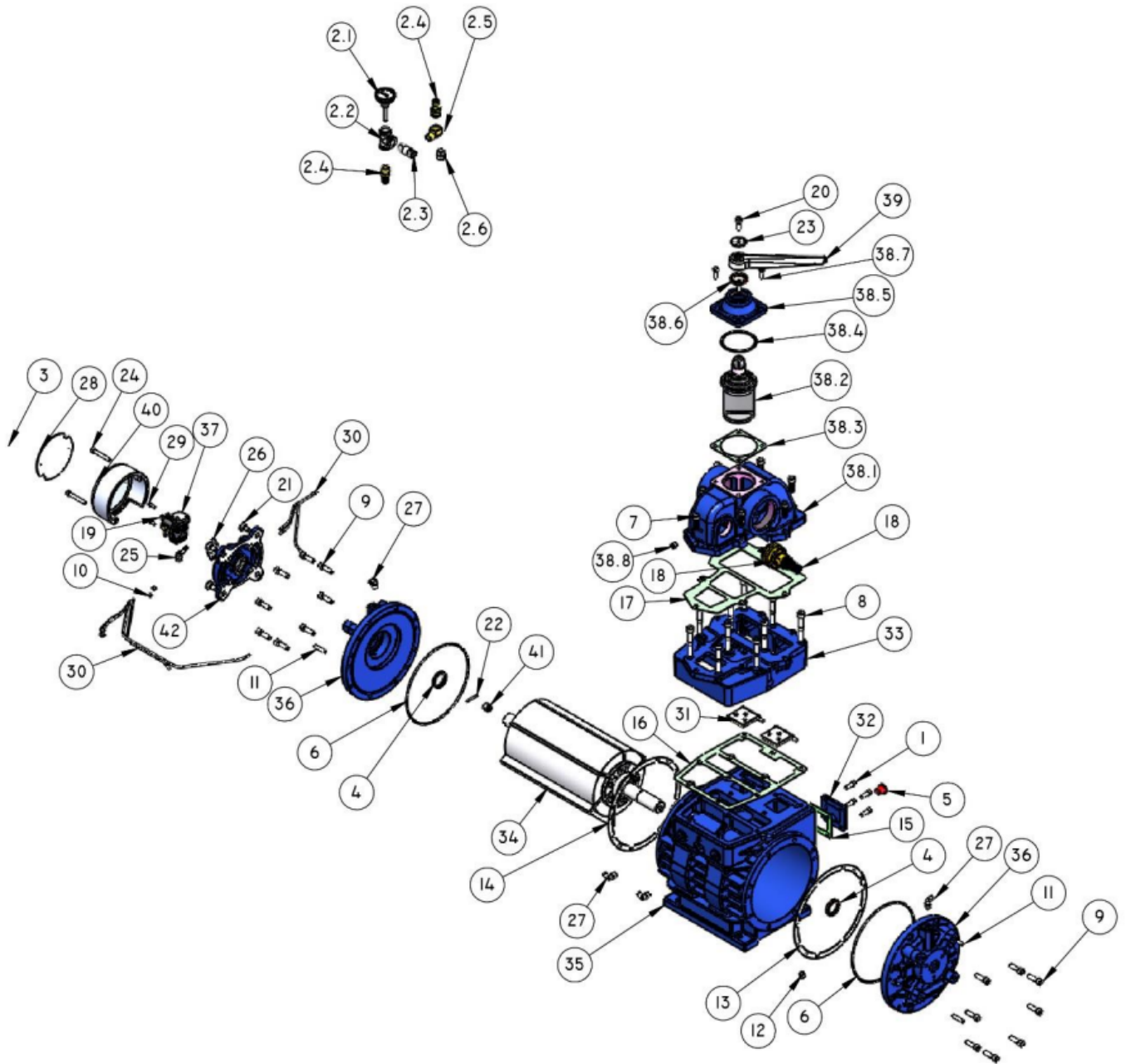
ITEM	QTY	PART NUMBER	DESCRIPTION
1	1	120-001-367-L	HOUSING 607 LIQ
2	1	120-003-002 120-003-003	ENDPLATE, CW MACHINED 607 (CW PUMP) ENDPLATE, CCW MACHINED 607 (CCW PUMP)
3	1	120-003-003 120-003-002	ENDPLATE, CCW MACHINED 607 (CW PUMP) ENDPLATE, CW MACHINED 607 (CCW PUMP)
4	2	120-004-367	GASKET ENDPLATE 607
5	1	120-005-367	ROTOR 607
6	1	120-006	KEY 3/8" X 3/8" X 2"
7	7	120-007-367	VANE 607
8	2	120-009-367	SEAL SLEEVE 607
9	4	120-018-367	SEAL 60 X 72 X 8 VITON SGL LIP
10	2	120-019-367	BEARING NJ308 C3
11	2	120-021-367	COVER PLATE, 367 WATER JACKET
12	2	120-022-367	GASKET, 367/506 COVER PLATE
13	2	120-039-367	GASKET 607 INTAKE/EXHAUST
14	1	120-041-367	CHECK VALVE 3"
15	1	120-042-367	RETAINER RING CHECK VALVE 3"
16	1	120-045	SPRING 4-WAY FTR VALVE
17	2	120-045-001	SPRING WAVE WIRE 3.50" DIA
18	1	120-046-367	SPRING CHECK VALVE
19	1	120-047	DRAIN PLUG, 3/4" NPT
20	1	120-047-004	PLUG 1.5" NPT SQ CORED GALV
21	1	120-047-1	DRAIN PLUG, 3/4" NPT MAGNETIC
22	1	120-049	BUSHING, 3/4" NPT X 1/8" FNPT
23	2	120-053	SEAL 40 X 52 X 7 VITON
24	1	120-054-001	BEARING COVER 607
25	1	120-054-002	BEARING COVER 607 OIL PUMP
26	2	120-055-367	GASKET, FRONT BEARING COVER
27	2	120-058	PLUG BRASS HEX HEAD 1/8" NPT
28	1	120-059	PLUG BRASS HEX HEAD 1/4" NPT
29	1	120-060-005	GRIP 3/8" HANDLE W/ LOGO
30	1	120-060-006	HANDLE 3/8"
31	1	120-062-002	PLUG 4-WAY FOR 3/8" HANDLE
32	2	120-063-367	FLANGE 4-WAY 3" NPT
33	2	120-064-001	O-RING, 2-154 VITON
34	2	120-064-002	O-RING, 2-214 VITON
35	1	120-064-003	O-RING, 2-240 VITON
36	1	120-064-004	O-RING, 2-265 VITON
37	1	120-065-002	TOWER 3" 607
38	1	120-079-008	GUARD NVE OIL PUMP 607/887 W/ SN TAG MOUNT
39	1	120-101-003	DECAL CW ROTATION ARROW
40	1	120-102	VALVE, DRAIN 1/8" NPT
41	1	120-103-367	DECAL, IMPORTANT, MAX OPERATING TEMP
42	1	120-105-607	NAME PLATE SS, 607

# NVE

ITEM	QTY	PART NUMBER	DESCRIPTION
43	1	120-107-001	SFRIAI TAG SS
44	1	120-220	THERMOMETER, 50- 400 DEG, 2" FACE
45	1	120-220-1	THERMOMETER 220 F 1/8" NPT
46	1	120-310-001	COVER, FILTER 607/866
47	4	120-312-002	KNOB, 5/16-18UNC
48	1	120-314-001	FILTER ELEMENT 607/866
49	1	120-320-003	HOUSING FILTER 607 W/ RELIEF BOSS
50	1	123-000-004	OIL PUMP 4 PORT BIDIRECTIONAL
51	1	123-408-017	BANJO ADAPTER TO 0.250" HB
52	8	123-013-001	WASHER 3/8" SEALING NBR
53	4	123-408-014	BANJO BOLT 1/8" BSPP
54	1	320-407-005Z	OIL LINE -3 SST FEMALE JIC TO BANJO 6.75"
55	1	320-407-006Z	OIL LINE -3 SST 90 DEG JIC TO BANJO 17.5"
56	1	320-407-008Z	OIL LINE -3 SST FEMALE JIC TO BANJO 28.75"
57	1	320-407-035Z	OIL LINE -3 SST FEMALE JIC TO BANJO 32.25"
58	2	320-408-016	FITTING STR -3 MJIC X 1/8 MNPT
59	2	320-408-017	FITTING ELBOW -3 MJIC X 1/8 MNPT
60	4	320-409-003	P-CLIP, OIL LINE 1/4" X 5/16
61	1	320-LF8	DRIVE TAB
62	1	320-R31	GASKET, OIL PUMP
63	1	412-020-001	WASHER, CUP 4-WAY
200	1	OWNERS MANUAL - 607	OWNERS MANUAL - 607
201	1	320-082-001	OIL TANK, 5QT, W/ LOGO
202	1	320-083-009	OIL TANK FILTER, 100 MESH
203	1	320-083-010	FILTER FITTING, OIL TANK 1/4 NPT
204	5 FT	320-407-003	OIL LINE, BLK 1/4" ID 30R7
205	2	416-025-1WC	CLAMP, WORM, 1/4" DIA
206	6 IN	320-R102	OIL LINE, 3/8" X 1/4" ID X 6" LG
207	1	310-LPS	HOSE BARB 1/4" X 1/8" NPT STRAIGHT
301	16	FW - 3/8	FLAT WASHER, 3/8"
302	4	HHCS - 1/2-13 UNC X 1.00	HHCS - 1/2-13 UNC X 1.00
303	1	HHCS - 3/8-16 UNC X 0.75	HEX HEAD CAP SCREW - 3/8-16 UNC X 0.75
304	16	HHCS - 3/8-16 UNC X 1.75	HEX HEAD CAP SCREW - 3/8-16 UNC X 1.75
305	20	HHCS - 5/16-18 UNC x 0.75	HEX HEAD CAP SCREW - 5/16-18 UNC x 0.75
306	4	HHCS - 5/16-18 UNC X 2.00 - FULL THREAD	HEX HEAD CAP SCREW - 5/16-18 UNC X 2.00 FULL THREAD
307	16	HHCS - 5/16-18 UNC x 1.00	HEX HEAD CAP SCREW - 5/16-18 UNC x 1.00
308	4	LW - 1/2	LOCK WASHER, 1/2
309	1	LW - 3/8	LOCK WASHER, 3/8"
310	52	LW - 5/16	LOCK WASHER, 5/16"
311	6	RVT 3/32 D X 1_4L SS	BLIND RIVET, 3/32 DIA X 1/4 GRIP, SS
312	2	SHCS - 1/4-20 UNC X 0.50	SHCS - 1/4-20 UNC X 0.50
313	8	SHCS - 5/16-18 UNC X 1	SHCS - 5/16-18 UNC X 1



# Masport



17-Dec-24

Item	Code	Description	Qty
1	11063	Bolt - M8 x 25	4
2.1	21076	Thermometer	1
2.2	27463	Tee - 1/2"	1
2.3	30254	Nipple - 1/2" x 2"	1
2.4	27101	Hose Insert - 1/2"	2
2.5	27010	Elbow - 1/2"	1
2.6	27301	Plug - 1/2"	1
3	500806	Rivet - 2.5 x 6	2
4	501015	Seal - 35 x 47 x 7	2
5	501506	Plug	1
6	501677	O-Ring - 9 1/4" x 1/8"	2
7	501686	Bolt - M12 x35	7
8	501965	Bolt - M12 x 80	10
9	501966	Bolt - M10 x 35	16
10	503054	Cable Tie	2
11	503261	Dowel Pin - 8 x 40	4
12	503416	Plug - 1/4"	1
13	542011	Shim - End Cover .002"	*
14	542012	Shim - End Cover .002"	*
15	568232	Gasket - Side Plate	1
16	568805	Gasket - Manifold	1
17	568884	Gasket - Valve	1
18	569023	Vacuum Relief Valve	1
19	569946	Oil Pump Fitting	4
20	569538	Bolt - M10 x 25	1
21	569663	Bolt - 1/2" x 1"	4
22	569666	Roll Pin - 4 x 40	1
23	569724	Indicator Washer	1

Item	Code	Description	Qty
24	569849	Bolt - M8 x 60	2
25	569859	Oil Pump Supply Fitting	1
26	569926	Shim - Oil Pump	*
27	569949	Fitting - Oil Line	4
28	569961	Pump Model Tag	1
29	577711	Bolt - M6 x 16	2
30	600293	Oil Line	*
31	968026	Check Valve Flap	2
32	968231	Side Plate	1
33	968846	Manifold	1
34	968918	Vane Pack	1
35	968959	Cylinder	1
36	968971	End Cover	2
37	969879	Oil Pump	1
38.1	969792	Valve Body	1
38.2	969774	Spool	1
38.3	568044	Gasket - Valve Cap	1
38.4	569867	Wave Washer	1
38.5	969776	Valve Cap	1
38.6	501015	Seal - 35 x 47 x 7	1
38.7	11063	Bolt - M8 x 25	4
38.8	503416	Plug - 1/4"	1
39	969827	Handle	1
40	969828	Oil Pump Cap	1
41	969829	Oil Pump Coupler	1
42	969931	Oil Pump Mount	1
43	969984	Rotor Assembly	1