



# Operator Manual

## Fuel Lube Truck Off Road Articulated



Curry Supply Co., 1477 Degol Industrial Drive, Hollidaysburg, PA 16648

**YOUR JOBS. OUR TRUCKS.**



# TABLE OF CONTENTS

## Sections

Introduction & Safety Messages.....	3
System Descriptions.....	5
Normal Operations.....	8
Schematics.....	20
Warranty & Proprietary Information.....	34

# SECTION 1

## Introduction & Safety Messages

### CONTACT US

Curry Supply Company

1477 DeGol Industrial Drive, Hollidaysburg, PA 16648

[service@currysupply.com](mailto:service@currysupply.com) CurrySupply.com

Parts 800.567.5127

Warranty Service 800.345.2829

### MANUAL USAGE

This Operators Manual contains information to safely operate more than (1) configuration of "Curry Supply Off-Road Lube Trucks". The parts shown may not reflect the exact configuration on your truck. "Custom" style trucks may have parts not listed. If your system is not covered in this manual, please contact Curry Supply Co.

Support at 800.345.2829 or

[service@currysupply.com](mailto:service@currysupply.com).

All personnel working on or operating the machine must become familiar with the following safety messages.

Due to the nature of these processes, ensure that all safety information, warnings, and instructions are read and understood before any operation or maintenance procedures are performed.

This manual does not supersede any local, state, or federal laws.

### SAFETY MESSAGES

The following definitions are found throughout this manual and apply as follows:

#### WARNING

OPERATING PROCEDURES AND TECHNIQUES COULD RESULT IN PERSONAL INJURY OR LOSS OF LIFE IF NOT FOLLOWED CORRECTLY.

#### CAUTION


OPERATING PROCEDURES AND TECHNIQUES WHICH COULD RESULT IN DAMAGE TO EQUIPMENT IF NOT FOLLOWED CORRECTLY.

#### NOTE

OPERATING PROCEDURES AND TECHNIQUES THAT ARE CONSIDERED ESSENTIAL TO EMPHASIZE.


**WARNING**

IMPROPER USE OF EQUIPMENT  
COULD CAUSE SERIOUS INJURY OR  
DEATH. PLEASE READ AND  
UNDERSTAND ALL INSTRUCTIONS.




**WARNING**

WHEN OPERATING OR WORKING  
ON THE UNIT, KEEP HANDS AND  
BODY PARTS CLEAR OF PINCH  
POINTS.




**WARNING**

CONTACT WITH LIVE  
ELECTRICAL CIRCUITS COULD  
DAMAGE EQUIPMENT OR CAUSE  
INJURY.




**WARNING**

MOVING PARTS CAN CRUSH  
AND CUT. KEEP HANDS, FEET,  
HAIR, AND LOOSE CLOTHING  
AWAY FROM MOVING PARTS.




**CAUTION**

ADVERSE WEATHER CONDITIONS  
CAN CAUSE EQUIPMENT DAMAGE.  
WHENEVER POSSIBLE, PERFORM  
MAINTENANCE INDOORS.




**WARNING**

ALWAYS WEAR THE PROPER PPE  
WHILE OPERATING THE UNIT.




**WARNING**

DO NOT OPERATE THE UNIT WHILE  
INTOXICATED OR EXTREMELY  
EXHAUSTED.




**WARNING**

DO NOT WALK ON TOP OF THE  
VEHICLE. FALLING FROM  
VEHICLE CAN RESULT IN  
SERIOUS INJURY.




**CAUTION**

DRAIN ALL WATER DAILY DURING  
FREEZING TEMPERATURES.  
FREEZING WATER CAN RESULT IN  
DAMAGE TO EQUIPMENT.




**WARNING**

HIGH PRESSURE WATER. DO  
NOT OPERATE THE SPRAY  
VALVES OR CANNON UNTIL  
ALL THE PERSONNEL ARE AT A  
SAFE DISTANCE FROM THE  
VEHICLE.




**WARNING**

THE VEHICLE IS EQUIPPED WITH A  
BACK-UP ALARM. ALARM MUST  
SOUND WHEN OPERATING THIS  
VEHICLE IN REVERSE.



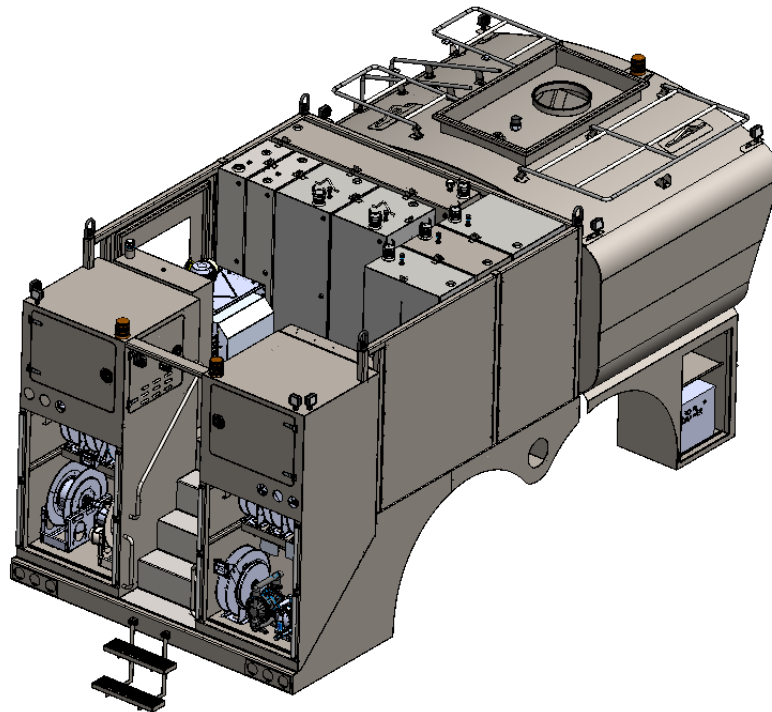
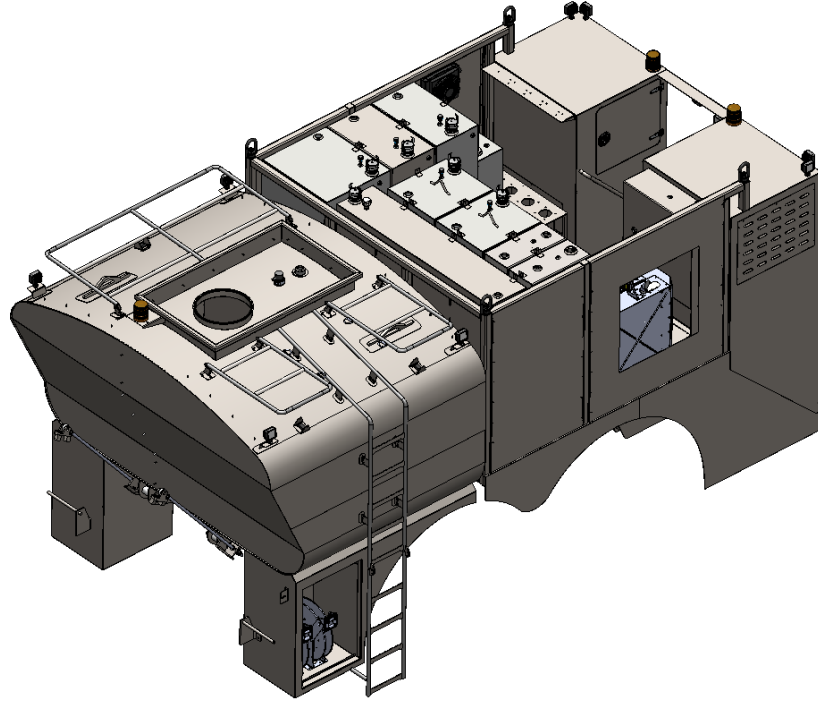
**WARNING**

ALWAYS WEAR YOUR SAFETY  
BELT WHILE DRIVING THE VEHICLE.  
IF VEHICLE TIPS, STAY BUCKLED  
AND INSIDE OF CAB AREA.



# SECTION 2

## System Descriptions





20-Dec-24

### DRIVER SIDE REAR COMPARTMENT



#### Contents

- Diesel Dispense Hoses
- Antifreeze Dispense Hose
- DEF Dispense Hose
- Air Dispense Hose

### PASSENGER SIDE REAR COMPARTMENT



#### Contents

- Ignition Switch
- Control Panel
- Product Fill Ports
- Product Dispense Hoses
- Waste Oil Hoses
- Waste Oil Controls

20-Dec-24

### GREASE REEL/QUICK FILL COMPARTMENT

(lower driver side of truck)



#### Contents

- Diesel Quick Fill Port
- Grease Dispense Hose Large
- Grease Dispense Hose Small

### GREASE FILL PORT

(lower passenger side of truck)



#### Contents

- Wiggins hose connection for Grease Fill

## SECTION 3

### Normal Operations

This section provides the vehicle operator with step-by-step operating procedures for the installed systems.

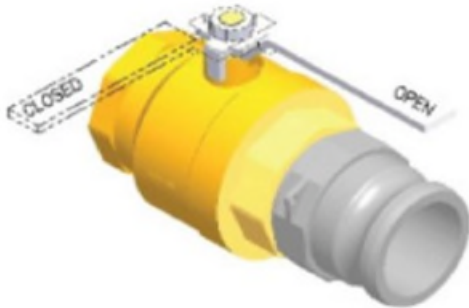
Prior to any operation, please perform a walk around inspection of the vehicle. Check specifically for any leaks or broken hoses.

#### VALVE OPERATION

Valves can be opened or closed by hand to allow or restrict flow.

OPEN – Handle aligns with the tube or hose.

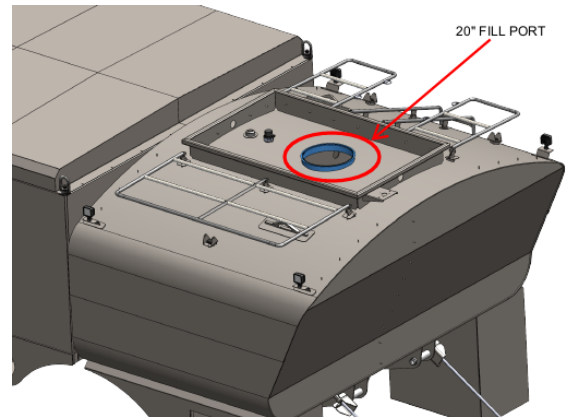
CLOSED – Handle is perpendicular, or at 90 degrees, with the tube or hose.



#### TANK FILLING OPERATIONS

##### Diesel Overhead Tank Fill

Ensure the tank fill opening is clear of obstruction.



Pull tank under fill station. Put vehicle in park.

Turn on the ignition switch, located in the passenger side rear compartment, to "RUN" to turn on display.



While watching the tank fill gauge on the display, begin filling the tank.

Turn the fuel source OFF when tank is full.



## Diesel Fast Tank Fill

Locate the grease hose compartment on the driver side of the tank. Locate the fast fill receiver inside of the compartment (may have a red rubber hose cap). Take the cap off of the end to expose the receiver.



Attach wiggins system fuel nozzle to the intake, ensuring that it is locked on before filling with fuel.

1. With your palm on the handle and your fingers on the pullback handle, pull it towards you until the locking dogs lock in the OPEN position. (Figure 1).



Figure 1

2. To check if it is opened, look to see if the dogs are locked and are outside of the ID of the front assembly. (figure 2A (open) figure 2B (closed)).

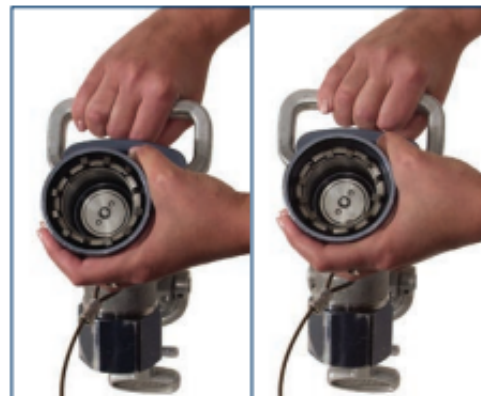


Figure 2A

Figure 2B

20-Dec-24

3. Push the nozzle all the way onto the receiver until the pullback handle snaps forward.
4. Lock the nozzle onto the receiver by lifting up the actuator handle (figure 3).



Figure 3

Fill the tank to desired fuel level, and disconnect wiggins system by reversing the steps above.

## DISPENSE OPERATIONS

### DIESEL FUEL

Turn on the rear power using the ignition switch.

1. In the rear driver side compartment, locate and switch the internal valve switch to the "ON" position.



2. At the front driver side of the tank, locate the "Emergency shut off switch" and switch it to the ON position as well.

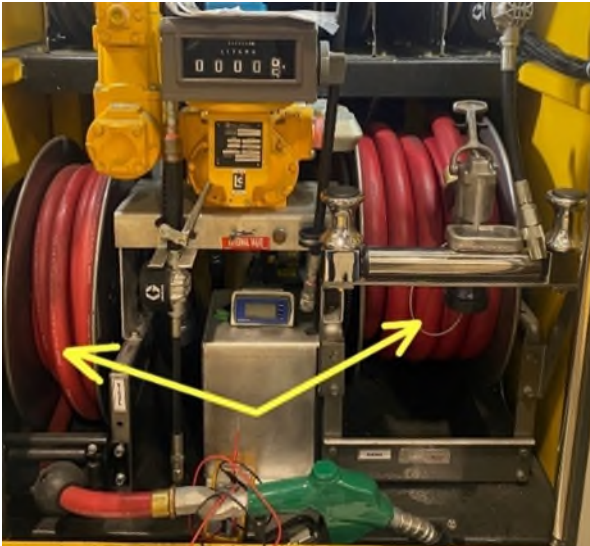


Both need to be ON for Diesel fuel to be dispensed. In the event of an emergency, if either of these valves are shut off, diesel will stop dispensing.

3. Select the Diesel fuel option on the control board by pushing it. A light will illuminate above it.



4. Select the appropriate fuel reel based on the type of nozzle needed for the application (Wiggins or standard).



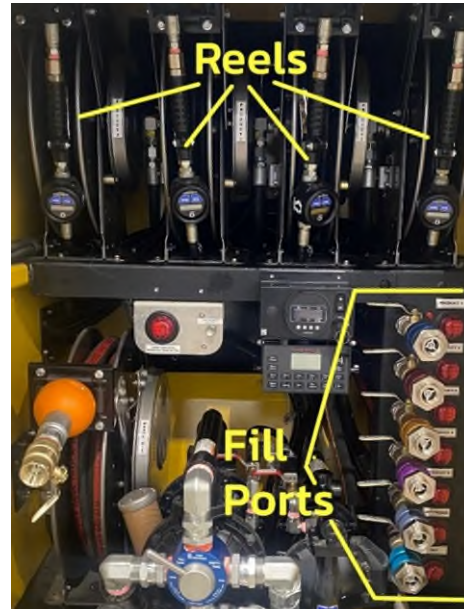
Begin fueling while watching the gallons meter and level indicator. Fill to the desired level.

When finished, turn off the diesel fuel button on the control board, reel in the hose, and flip the internal valve switch to the OFF position.

## FILLING PRODUCT TANKS

Turn on the rear power with the ignition switch.

1. Locate the product reels and fill ports in the rear passenger side compartment.



Fill ports are different colors and labeled as to what product is in which tank.





## 20-Dec-24

2. Push the hose connection into the corresponding port.
3. Open the valve of the selected product port and fill the tank. The light will turn on when it is full.
4. Once complete, detach the fill hose.
5. Turn off the rear power.

### DISPENSING PRODUCTS:

1. Turn on the rear power via ignition switch.
2. Select the product reel you want to use on the control display (Prod 1, Prod 2, etc.). When the button is pushed, a light will illuminate above it, and the output will change from 0 to 1, to signal power.



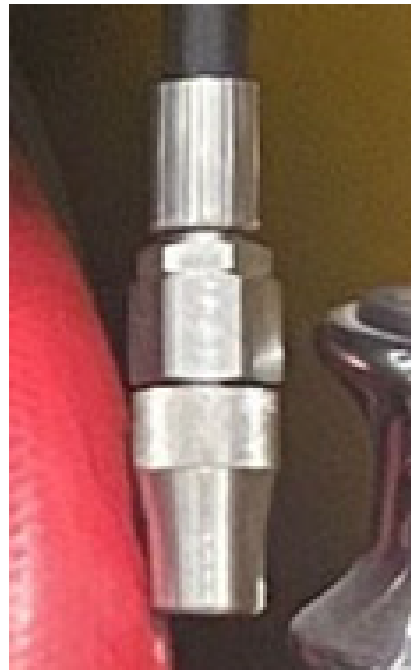
3. Extend the product reel hose to desired length by pulling it with the handle.



4. The handle display will show how many gallons have been pumped. Push the reset button to set it to zero.



5. Open the no drip nozzle end by unscrewing it until it stops.





6. To begin pumping, push in the black thumb lock on the handle, and then squeeze to begin flow of product.



2. Locate and select the reel labeled "Anti-Freeze", in the rear driver side compartment.

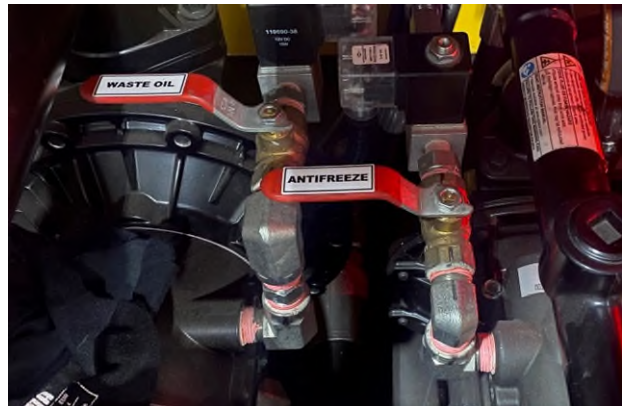


7. When finished, close the no drip nozzle and retract the hose back into the reel.
8. Push the button on the control board to turn off the power to the product reel. The light will turn off signaling the power is off.

### DISPENSING ANTI-FREEZE

1. Turn the rear power ON via ignition switch.

3. Locate the diaphragm pump in the lower part of the rear passenger compartment and turn the ball valve labeled "Anti-Freeze" to the OPEN position.



20-Dec-24

4. On the control panel, push the Anti-Freeze button, a light will illuminate.



5. Extend the hose from the reel, open the no drip nozzle, and dispense the anti-freeze.
6. Once the dispensing is complete, close the nozzle and retract the hose back to the reel.
7. Turn off the pump on the control panel by pushing the button.
8. Return the ball valve to the CLOSED position.

### FILLING DEF TANK

1. Turn the rear power ON via ignition switch.
2. Locate the DEF fill valve ports on the lower right side of the rear passenger side compartment.



3. Connect the fill hose using cam and groove fittings that are provided.
4. Open both ball valves, one on fill port and one on fill hose end connection. When the tank is full, the DEF light will turn on.
5. Return both ball valves to CLOSED position.
6. Turn OFF the rear power.

### DISPENSING DEF FLUID

1. Turn the rear power ON via ignition switch.
2. Turn on DEF pump by pressing the DEF button on control board.



3. Locate and extend the hose on reel labeled DEF (upper left side in driver side rear compartment) and begin pumping.



- Once pumping is completed, retract hose to reel
- Turn the DEF pump off on the Control Board.
- Turn OFF the rear power.

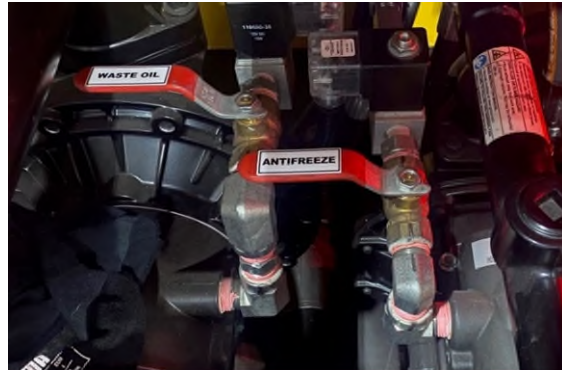
## WASTE TANK

### FILLING WASTE TANK

- Locate the 3-way valve in the lower portion of the passenger side rear compartment. Descriptions on the valve are in reference to the waste tank on this vehicle, not the outside tank. "FILL TANK" will pull into the tank. "EMPTY TANK" will expel from the tank. To Fill the tank, flip handle to FILL TANK



- Locate the ball valve to the right of the pump labeled "WASTE OIL" (by the anti-freeze valve) and turn it to the OPEN position.



- Locate the "WASTE OIL" button on the control panel and turn it ON.



- Extend the hose on the reel labeled "WASTE"



- Open the ball valve on the end of the hose and suck up the waste oil into the tank.
- Once complete, retract the hose and return the ball valve to the CLOSED position.



20-Dec-24

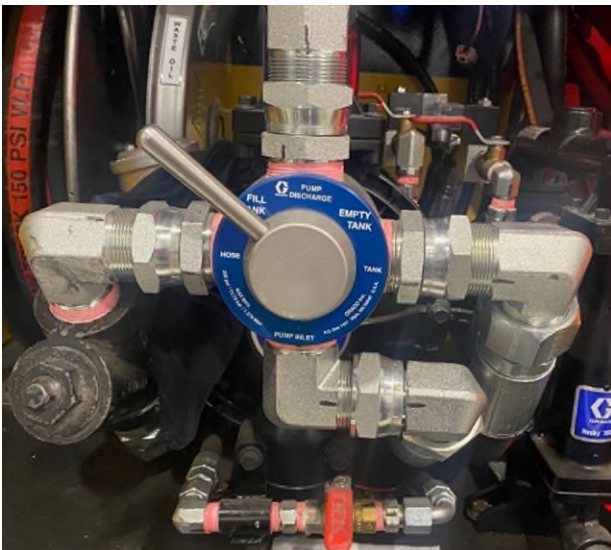
7. Turn OFF the WASTE OIL button on the control panel.

Be mindful of the light above the waste reel. It will illuminate if the tank gets full.



### EMPTYING WASTE TANK

1. Locate the 3-way valve in the passenger rear compartment. Flip the handle to the EMPTY TANK position.



2. Locate the ball valve labeled "WASTE OIL" and turn it to the OPEN position.



3. Locate the WASTE OIL button on the control panel and turn it ON.



4. Extend the hose to designated area and open the ball valve to begin expelling the contents.
5. Once the tank is empty, close the hose ball valve, turn OFF waste oil on the control panel, and retract the hose into the reel.
6. Return the "WASTE OIL" ball valve back to the CLOSED position.



## GREASE TANK

### FILLING GREASE TANK

1. Locate the fill port on the passenger side of the tank, above the rear axle.



2. Remove the cap from the fill port.
3. Attach the fill-hose using cam and groove fitting.
4. Open the ball valve behind the port to begin to fill.
5. Once the filling is complete, turn ball valve back to the CLOSED position.
6. Remove the fill-hose.
7. Replace the fill port cap.

### DISPENSING GREASE

1. Turn on the rear power via ignition switch.
2. Locate the control panel and push the GREASE button to turn on the pump.



3. Locate the grease hoses on the driver side compartment of the tank



4. Choose the reel that has the correct nozzle for your application and extend it from the reel.
5. Dispense the grease and once complete, retract the hose.
6. Push the GREASE button on the control panel to turn off the pump.

20-Dec-24

7. Turn the rear power off.

## AIR TANK

### DISPENSE AIR

1. Turn ON the rear power via ignition switch.
2. Locate the control panel and push the "AIR COMP" button to turn on the air compressor.



3. Locate the reel labeled "AIR"



4. Extend the hose from the reel to desired length.
5. Use the handle to dispense air.
6. Once complete, retract the hose.
7. Turn OFF the "AIR COMP" from control panel.
8. Turn OFF rear power.

## COMPARTMENT HEATING

1. Turn ON the rear power via ignition switch.
2. Locate the compartment heater knob in the rear passenger side compartment, next to the "FULL WASTE OIL" warning light.



3. Pull the knob out to turn on heat in the compartments.

## LIGHTS

1. Turn ON the rear power via ignition switch.
2. Locate the control panel in the rear passenger side compartment.



3. Turn on the desired lights by pushing the button on the control panel. A light will indicate that it is on. Lights are labeled (left flood, rear flood, comp't lights, and right flood) on the control panel.
4. Press the button again to turn the light OFF.
5. Turn OFF rear power.

# Section 4

## Schematics

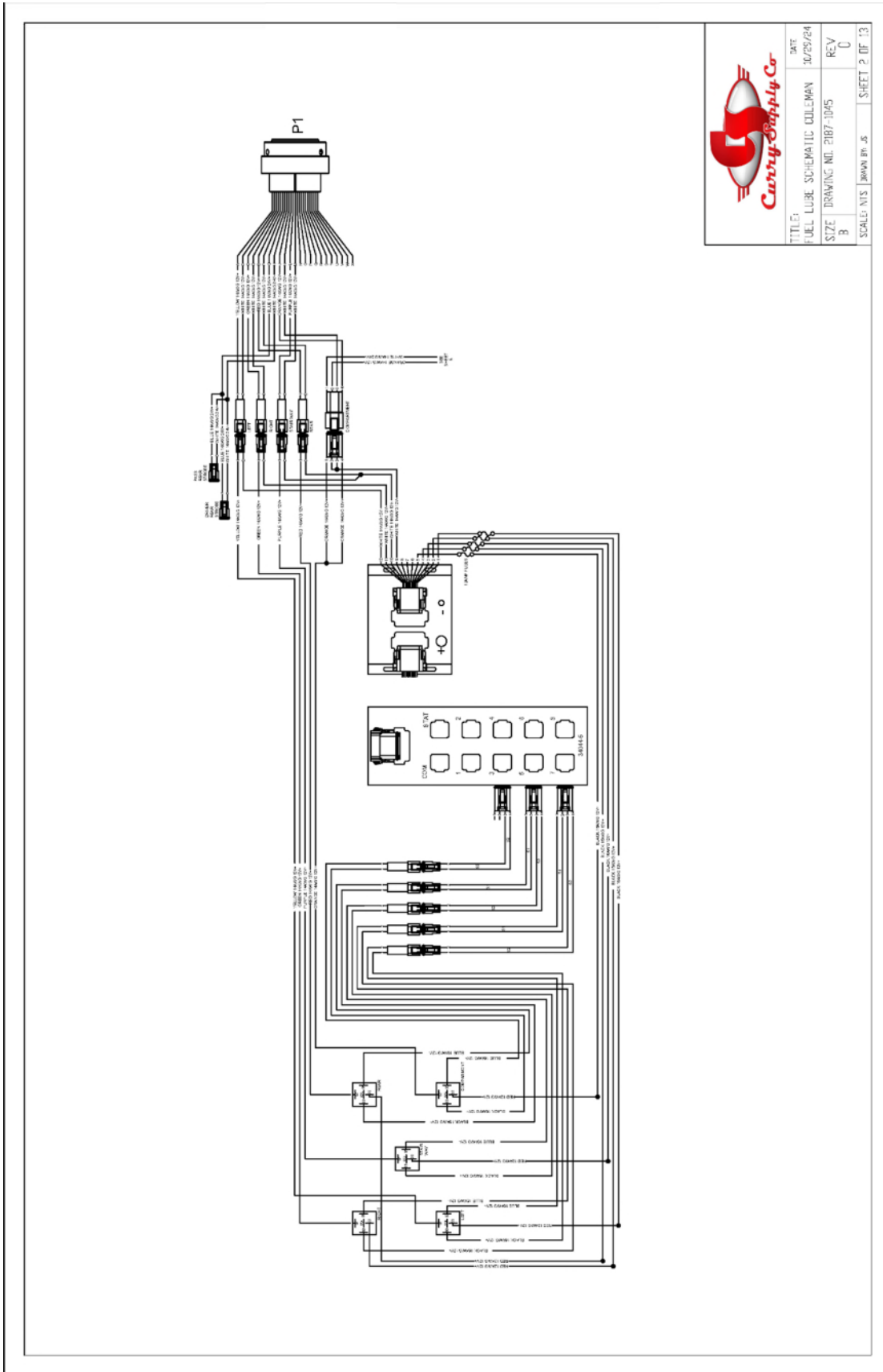
<a href="#">2187-1045 Coleman Fuel Lube SCH1-1</a>	<a href="#">Page 21</a>
<a href="#">2187-1045 Coleman Fuel Lube SCH1-2</a>	<a href="#">Page 22</a>
<a href="#">2187-1045 Coleman Fuel Lube SCH1-3</a>	<a href="#">Page 23</a>
<a href="#">2187-1045 Coleman Fuel Lube SCH1-4</a>	<a href="#">Page 24</a>
<a href="#">2187-1045 Coleman Fuel Lube SCH1-5</a>	<a href="#">Page 25</a>
<a href="#">2187-1045 Coleman Fuel Lube SCH1-6</a>	<a href="#">Page 26</a>
<a href="#">2187-1045 Coleman Fuel Lube SCH1-7</a>	<a href="#">Page 27</a>
<a href="#">2187-1045 Coleman Fuel Lube SCH1-8</a>	<a href="#">Page 28</a>
<a href="#">2187-1045 Coleman Fuel Lube SCH1-9</a>	<a href="#">Page 29</a>
<a href="#">2187-1045 Coleman Fuel Lube SCH1-10</a>	<a href="#">Page 30</a>
<a href="#">2187-1045 Coleman Fuel Lube SCH1-11</a>	<a href="#">Page 31</a>
<a href="#">2187-1045 Coleman Fuel Lube SCH1-12</a>	<a href="#">Page 32</a>
<a href="#">2187-1045 Coleman Fuel Lube SCH1-13</a>	<a href="#">Page 33</a>

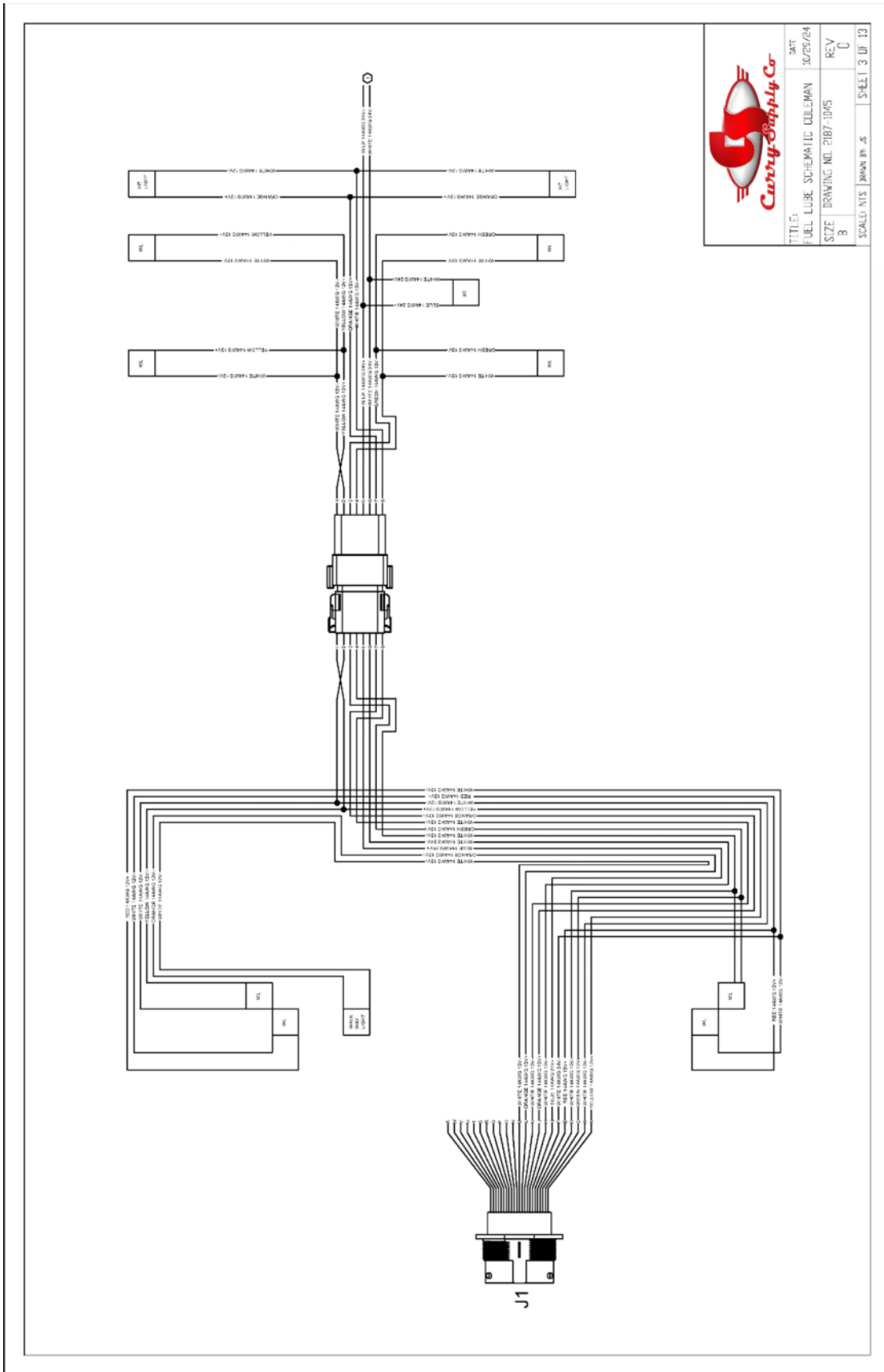


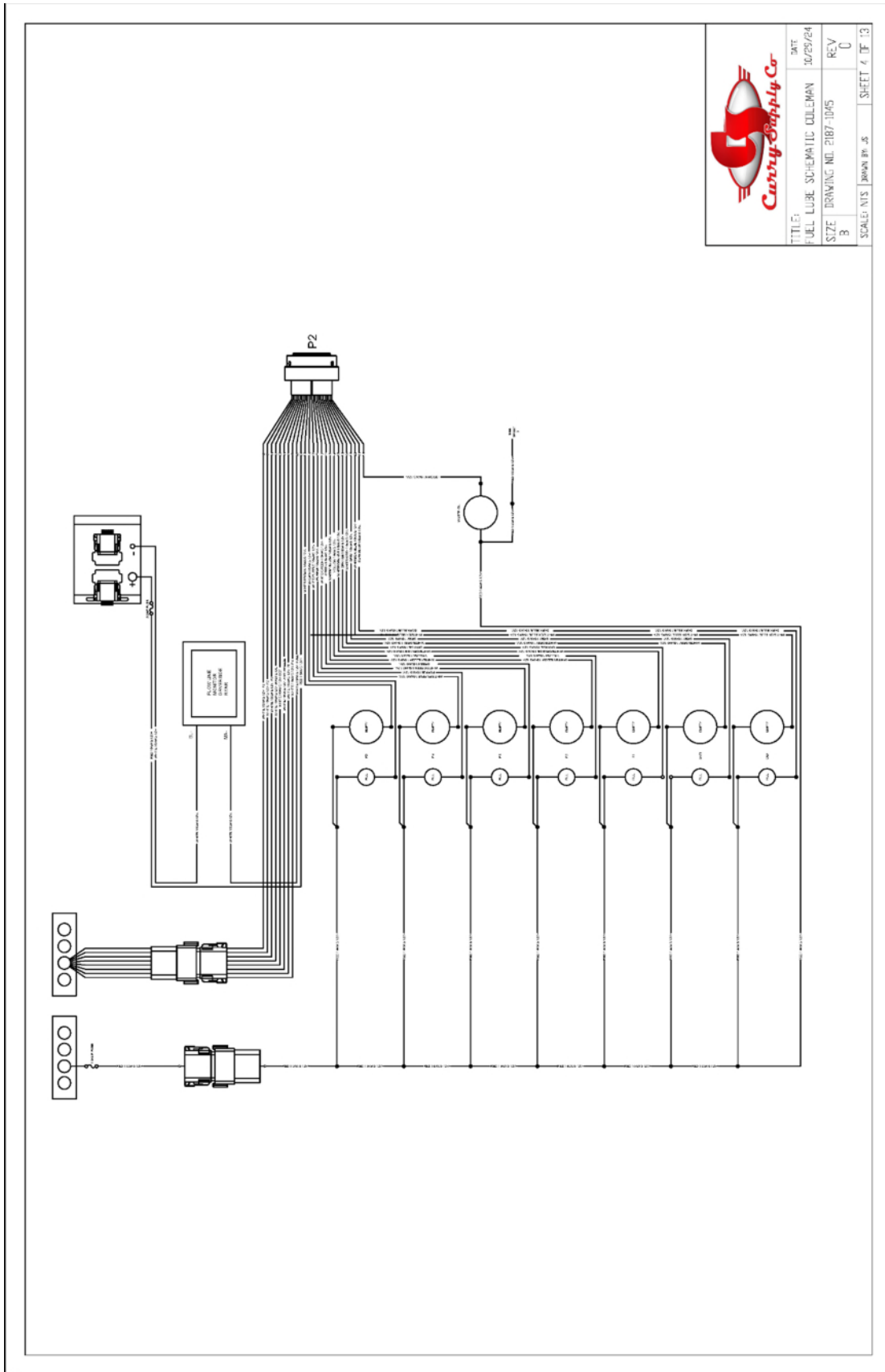
NOTES:

- 1 END UPFITTER NEEDS TO RUN WIRES TO THE CAB AND INSTALL A SWITCH.
  - 2 IGN WAS SPliced OFF PIN G TO PROVIDED IGN TO OUR SOLENOID TO POWER ON CURRY SYSTEM. SPlice LOCATION IS LOCATED AT THE CONTROL PANEL.
- SHEET REFERENCE:
- SHEET 1 - NOTES SHEET
  - SHEET 2 - ELECTRICAL PANEL WIRING FOR LIGHTS
  - SHEET 3 - EXTERIOR WIRING FOR LIGHTS
  - SHEET 4 - ELECTRICAL PANEL WIRING FOR FILL/EMPTY LIGHTS AND FLOW LINE MONITOR
  - SHEET 5 - LEVEL SENSOR WIRING
  - SHEET 6 - ELECTRICAL PANEL WIRING FOR PRODUCTS / GREASE / HYD COOLER
  - SHEET 7 - EXTERIOR WIRING FOR PRODUCTS / GREASE / HYD COOLER
  - SHEET 8 - ELECTRICAL PANEL WIRING FOR COMPRESSOR / W/O ANTI / DEF / COMPT LIGHTS AND IGN SIGNAL FROM CONTROL PANEL
  - SHEET 9 - ELECTRICAL PANEL WIRING FOR COMPT HEATING WIRING
  - SHEET 10 - IGN WIRING FOR ELECTRICAL PANEL
  - SHEET 11 - ELECTRICAL PANEL WIRING FOR CAN BUS/DATA PANEL PRODUCT
  - SHEET 12 - HOSE REEL WIRING
  - SHEET 13 - HATZ MOTOR WIRING

		TITLE	DATE
		FUEL LUBE SCHEMATIC COLEMAN	10/29/24
SIZE	DRAWING NO. 2187-1045	REV	
B		0	
SCALE: NTS	DRAWN BY: JS	SHEET 1 OF 13	

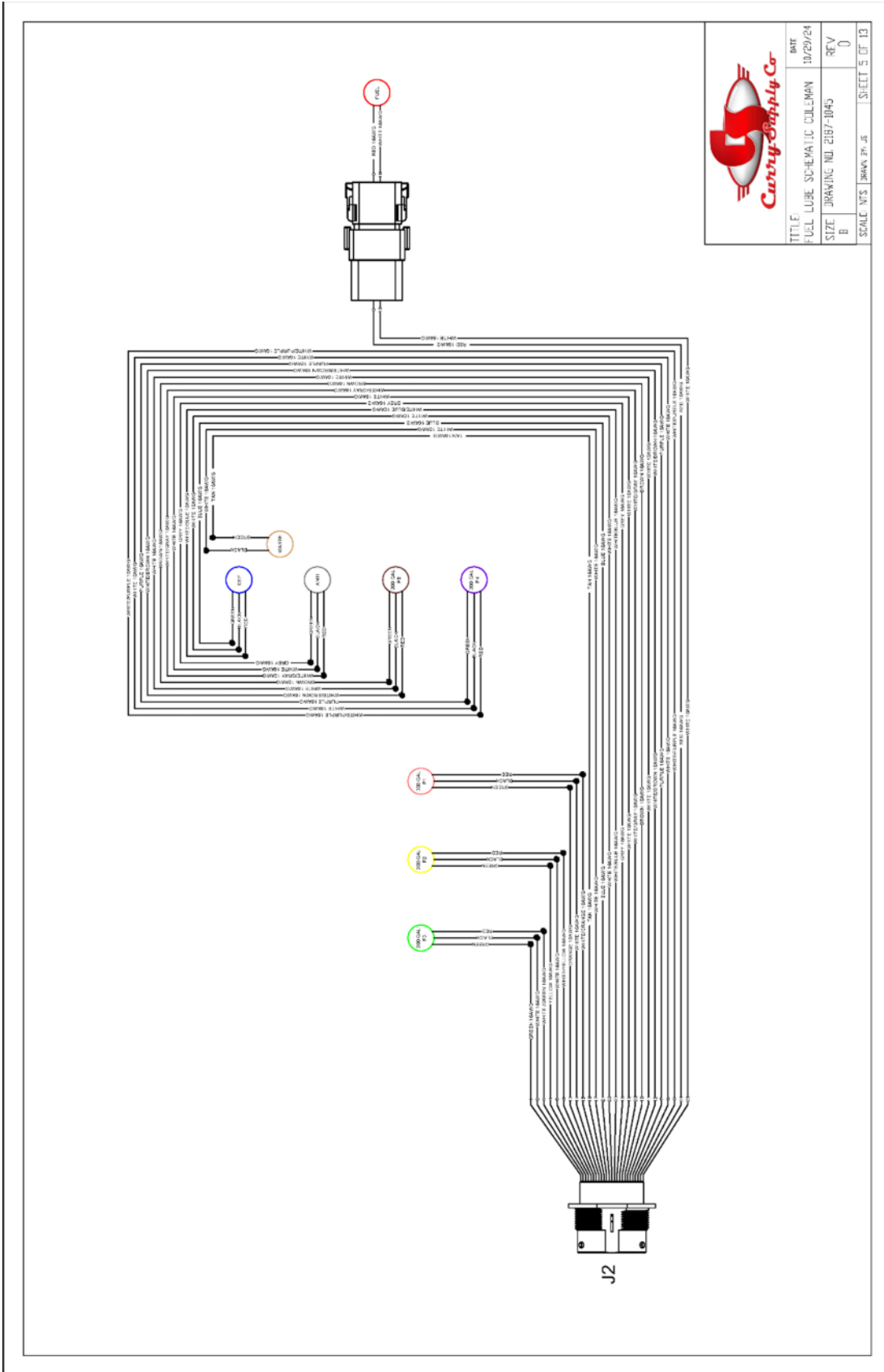






TITLE:	DATE:
FUEL LUBE SCHEMATIC COLEMAN	10/29/24
SIZE: DRAWING NO. 2187-1045	REV: 0
B	
SCALE: NTS	DRAWN BY: JS
	SHEET 4 OF 13





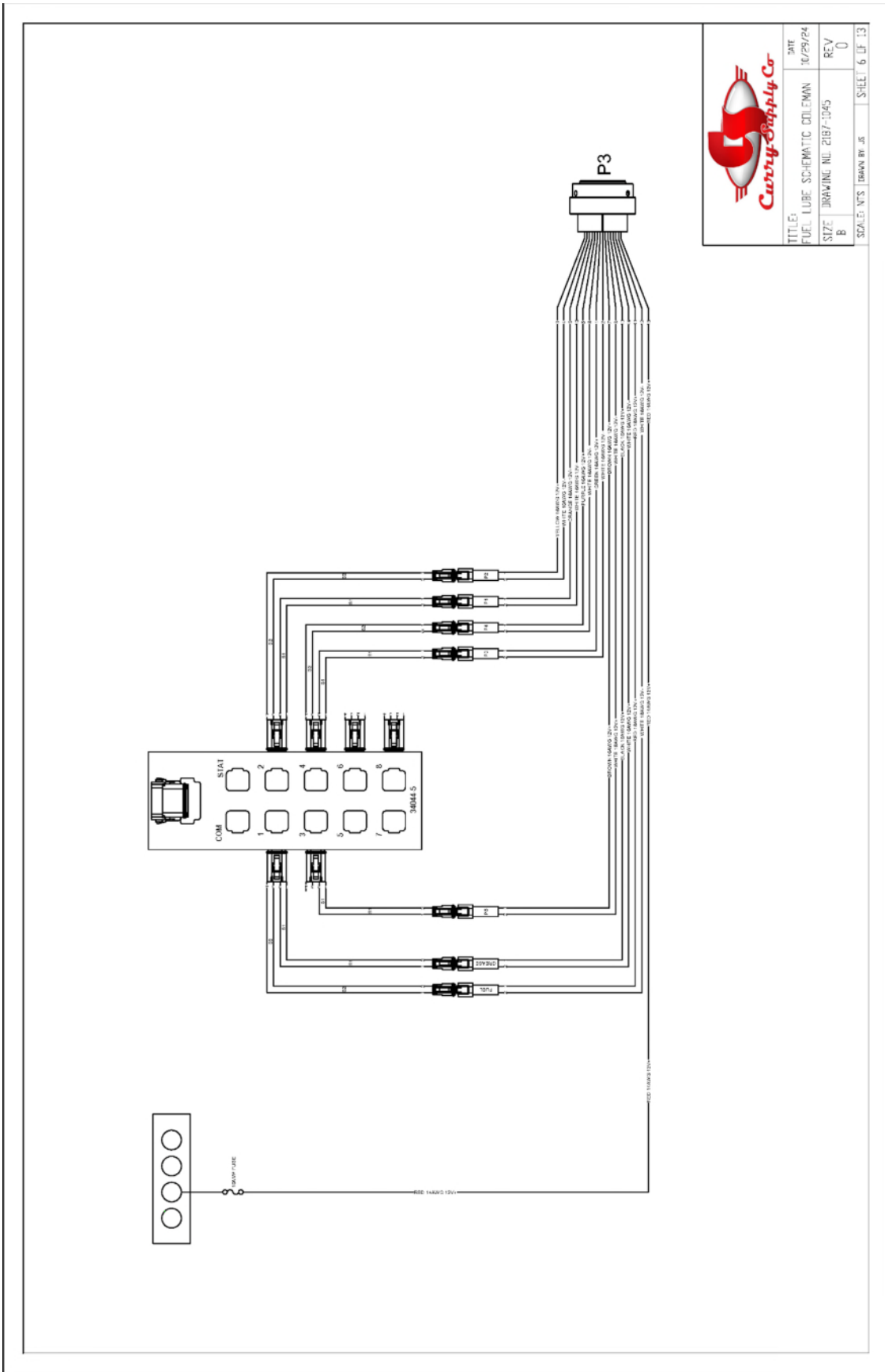

TITLE	DATE
FUEL LUBE SCHEMATIC CULMAN	10/29/24
SIZE B	DRAWING NO. 2187-1045
REV 0	
SCALE NTS	SHEET 5 OF 13



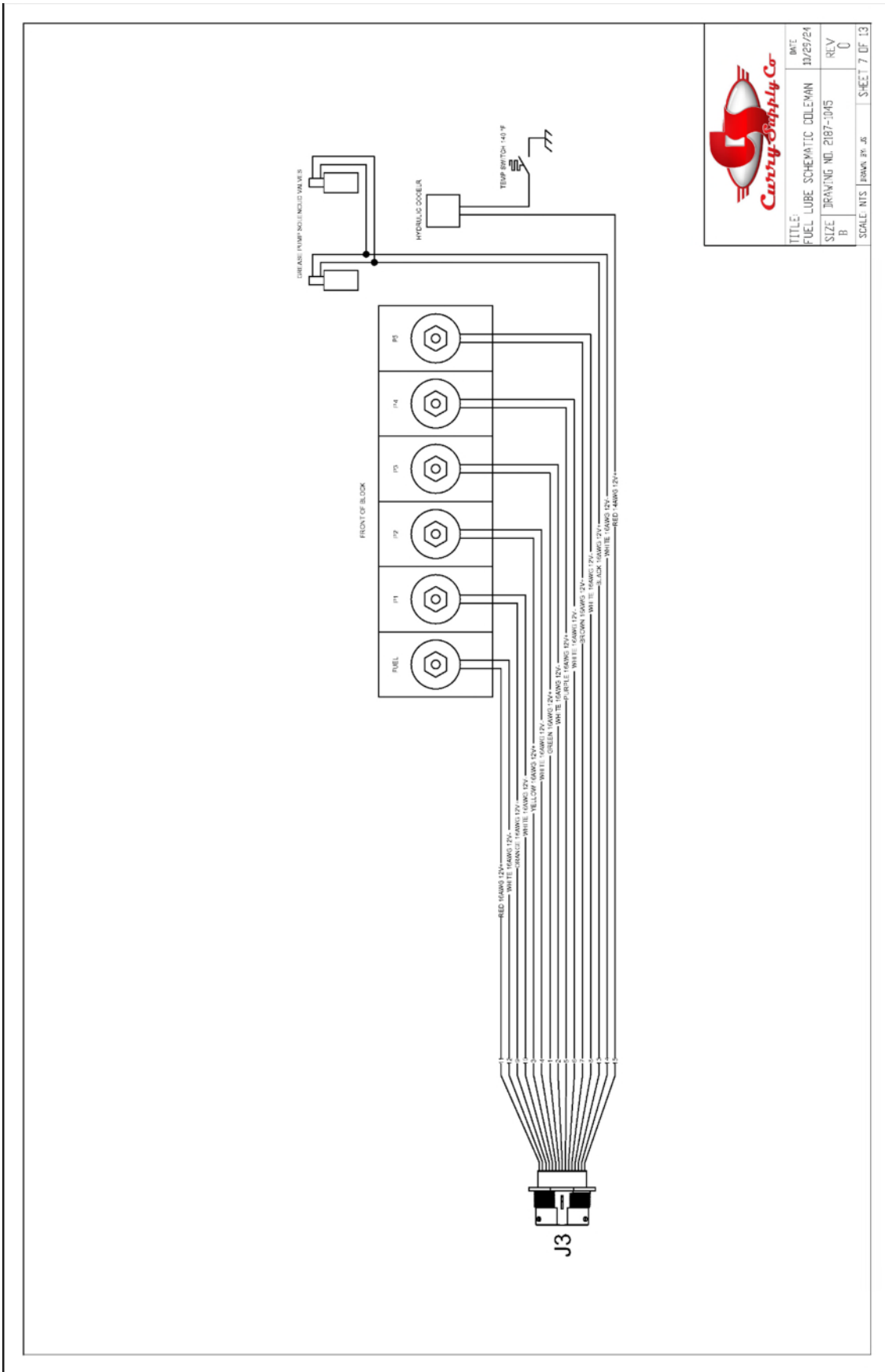
800.345.2829

www.CurrySupply.com

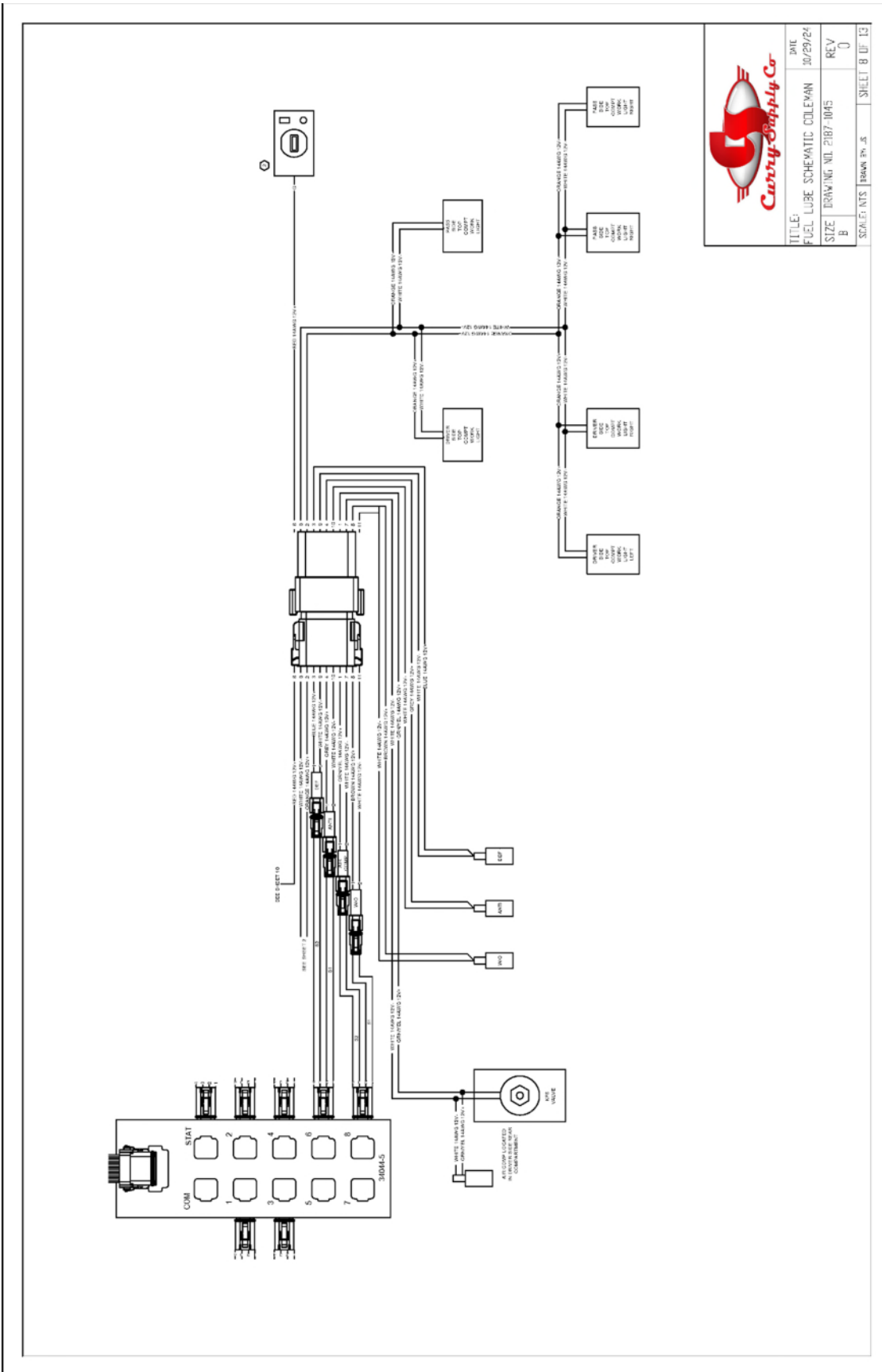




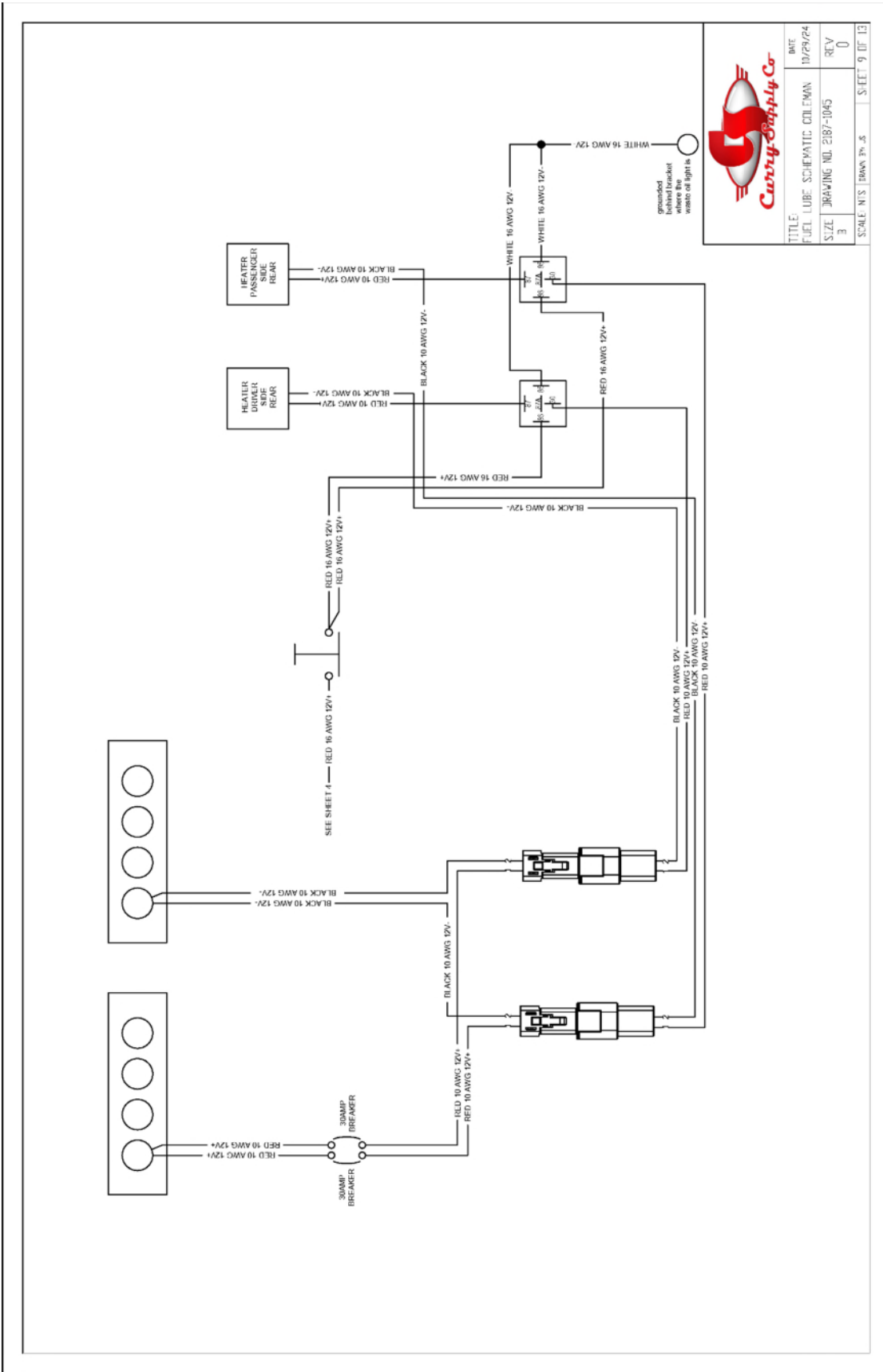
TITLE:	DATE
FUEL LUBE SCHEMATIC GOLEMAN	10/29/24
SIZE DRAWING NO: 2187-1045	REV
B	0
SCALE: NTS	SHEET 6 OF 13
DRAWN BY: JS	



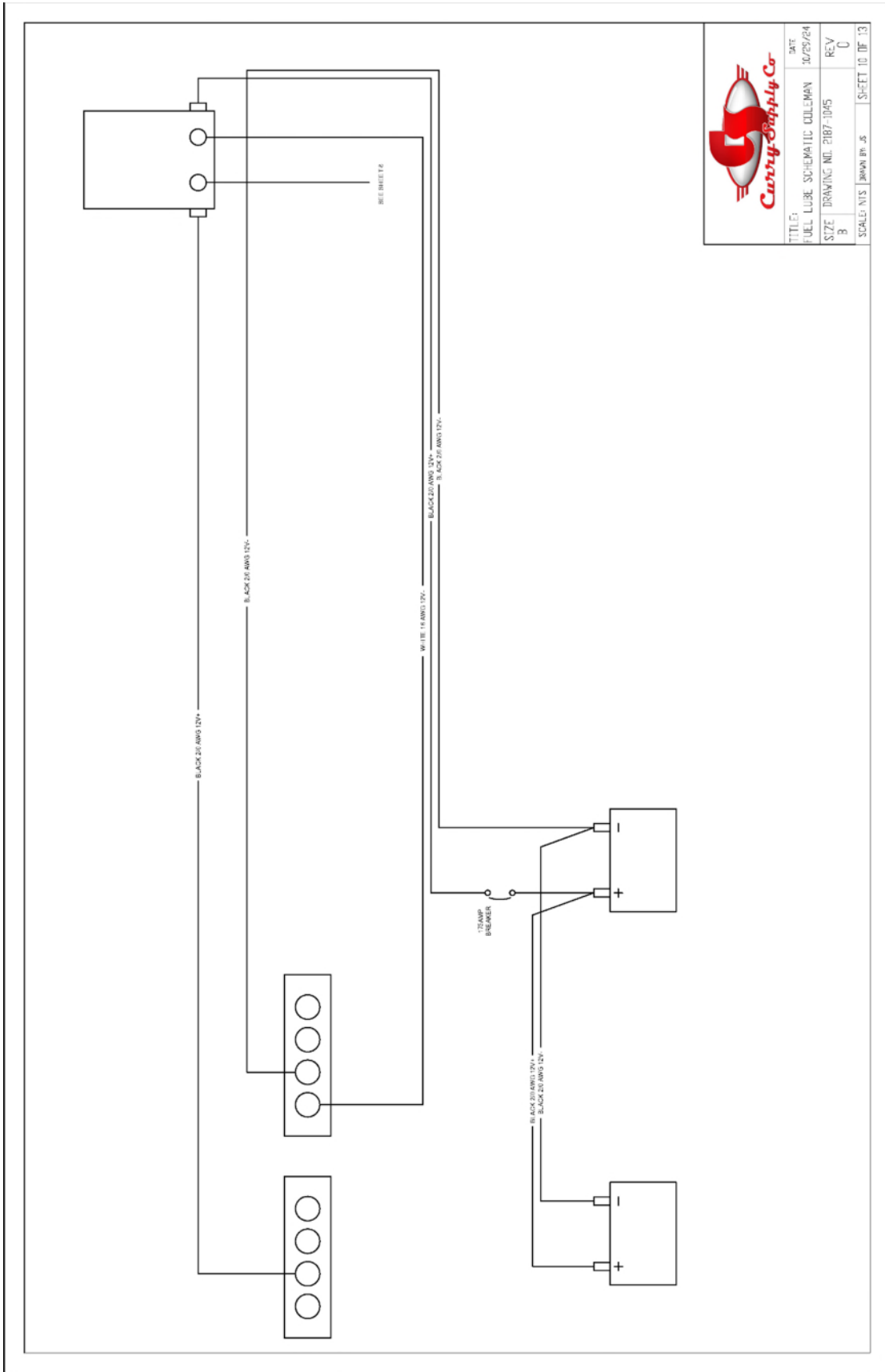

TITLE:	DATE:
FUEL LUBE SCHEMATIC COLEMAN	11/29/24
SIZE:	REV:
B	0
SCALE:	SHEET:
NIS	7 OF 13



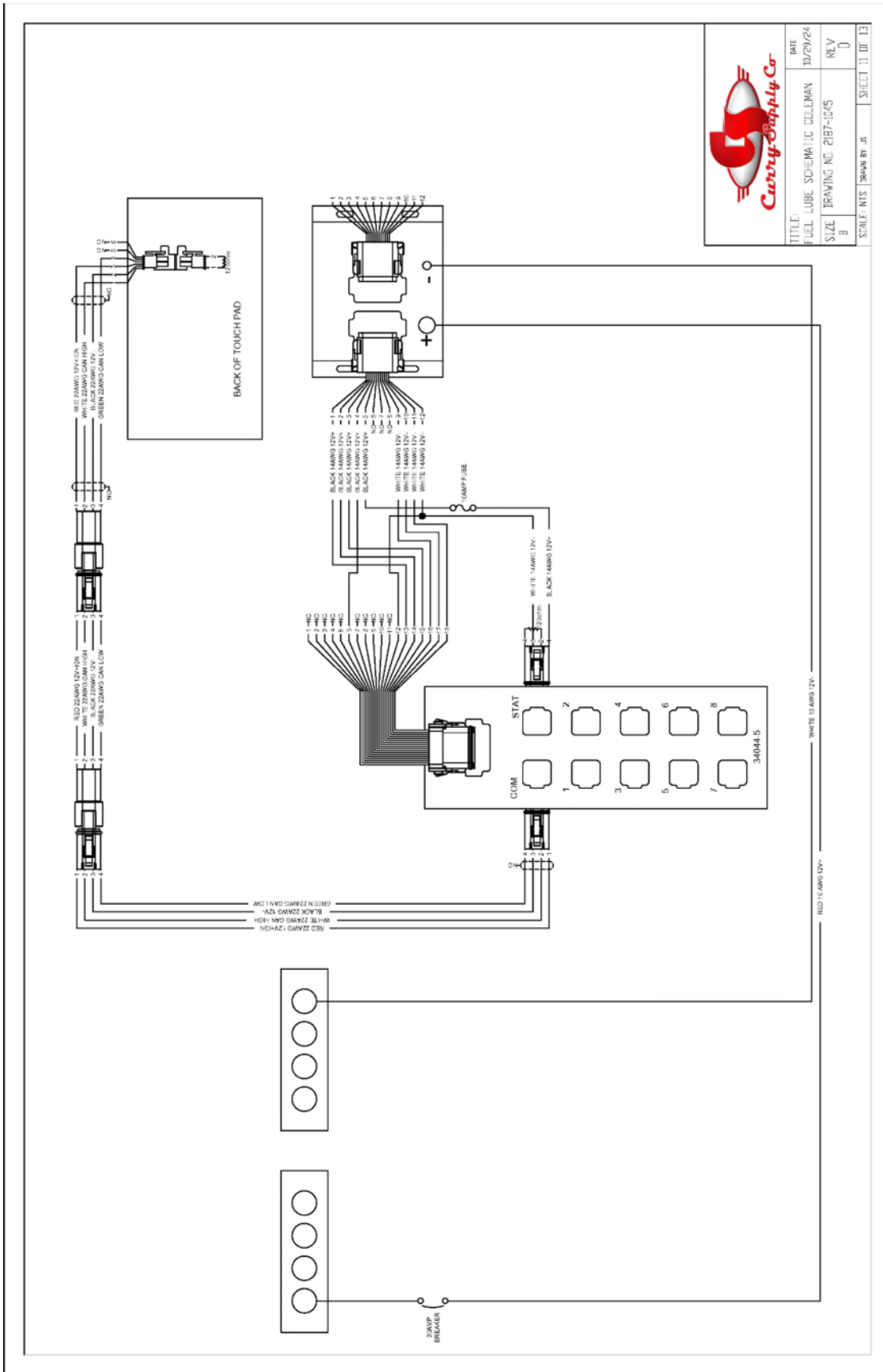




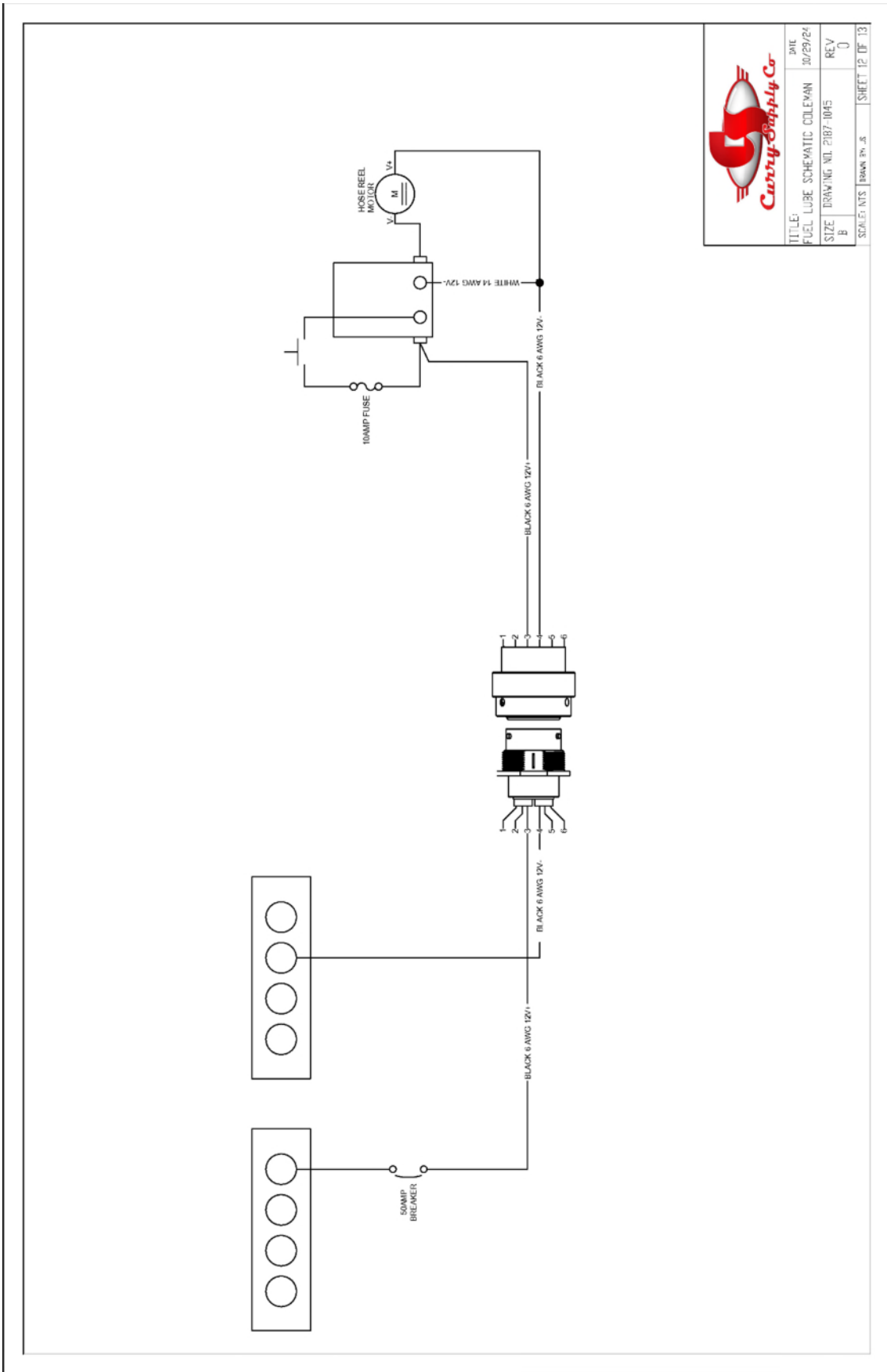
TITLE:	DATE:
FUEL LUBE SCHEMATIC COLEMAN	10/29/24
SIZE DRAWING NO. 2187-1045	REV:
3	0
SCALE: NTS DRAWN BY: JS	SHEET 9 OF 13



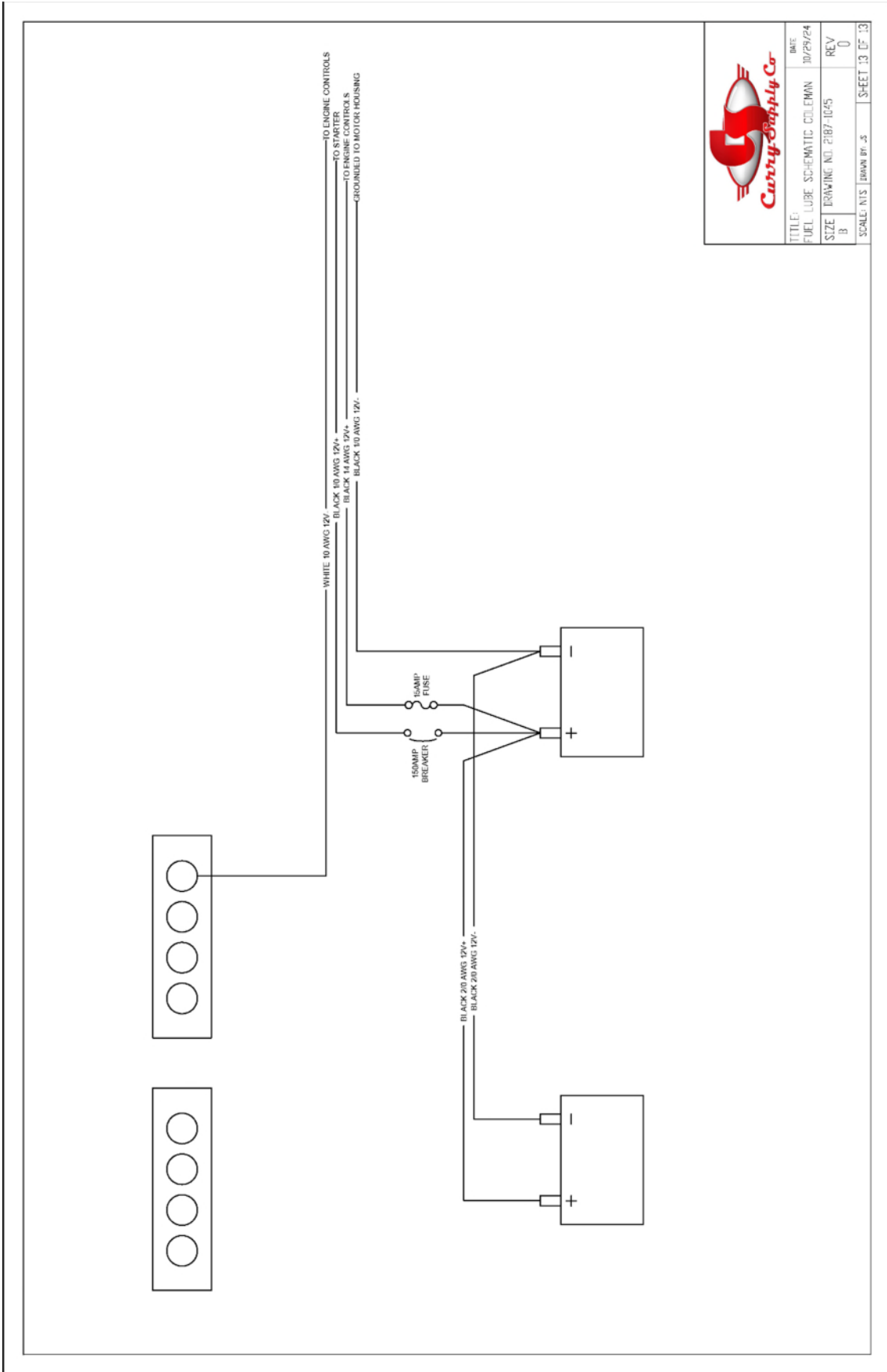
TITLE	DATE
FUEL LUBE SCHEMATIC COLEMAN	10/25/24
SIZE	REV
B	0
SCALE: NTS	DRAWN BY: JS
	SHEET 10 OF 13




TITLE:	DATE:
FUEL LUBE SCHEMATIC CULLEMAN	12/20/24
SIZE DRAWING NO: 2187-10/5	REV:
B	0
SCALE: NTS	DRAWN BY: JS
	SHEET 11 OF 13








TITLE:		DATE:
FUEL LUBE SCHEMATIC COLEMAN		10/29/24
SIZE:	DRAWING NO. 2187-1045	REV:
B		0
SCALE: NYS	DRAWN BY: JS	SHEET 13 OF 13

## SECTION 5

### Warranty & Proprietary Information

Curry Supply Company warrants products designed and manufactured by Curry Supply Company to be free from defects in material and workmanship under proper use and maintenance. Products must be installed and operated in accordance with Curry Supply’s written instructions and capacities. All warranty periods will begin on the in-service date as defined in this document. This warranty shall cover the following Curry Supply Products:

	1 Year	2 Years	Variable
<b>On Road Water / Flatbed / Crash Attenuator / Lube Skid</b>			
Curry Manufactured Components		✓	
Paint Coverage on Curry Manufactured Parts	✓		
Parts	✓		
Repair Labor	✓		
<b>Off Road / Dump / Industrial Carrier / Vacuum / Winch / Railroad</b>			
Tank	✓		
Tank Exterior Paint Coverage	✓		
Parts	✓		
Repair Labor	✓		
<b>Mechanics</b>			
Body (Refer to Manufacture Warranty)			✓
Crane (Refer to Manufacture Warranty))			✓
Paint Coverage (Refer to Manufacture Warranty)			✓
Parts (Refer to Manufacture Warranty)			✓
Repair Labor (Refer to Manufacture Warranty)			✓
<b>Lube</b>			
Body (Refer to Manufacture Warranty)	✓		
Tanks (Refer to Manufacture Warranty)			✓
Parts	✓		
Repair Labor	✓		
Paint Coverage	✓		
<b>Utility Lift</b>			
Body (Refer to Manufacture Warranty)			✓
Lift (Axion)			✓
Parts	✓		
Repair Labor	✓		
Body Paint Coverage	✓		



**Definitions**

**Curry Supply Manufactured Components/Structures** – Includes any structural weldment or load bearing support structure manufactured by Curry Supply Company.

**Rust Through on Curry Supply Components/Structures** – Rust Through is defined as a hole in the metal caused by corrosion. Excluded is corrosion caused by external caustics, including but not limited to improper cleaning material, road salt and other chemicals left on the structure for extended periods of time.

**Paint Coverage on Curry Supply Manufactured Parts** – Curry Supply guarantees that exterior paint will not fail in terms of adhesion, blistering or unreasonable loss of color or gloss for a 1-year period. Excluded is damage such as chips, dents, scratches, tank interior coating, and corrosion due to caustic chemicals (eg. Brine Solution / Leachate) and dirt build-up. Regular cleaning and maintenance of the product to remove external factors is expected to keep this warranty in force.

**Vendor Supplied Components/Structures** – Products purchased by Curry Supply from outside vendors. These items shall be covered by the warranty offered by the respective manufacturer only. Curry Supply does not obligate itself to any such warranty.

**Warranty Process**

Curry Supply’s obligation under this warranty is limited to, and the sole remedy for any such defect shall be, the repair and/or replacement (at Curry Supply’s option) of the unaltered part and/or component in question. Curry Supply after-sales service personnel must be notified by telephone, email, or letter of any warranty applicable damage within fourteen (14) days of its occurrence. If possible, Curry Supply will ship the replacement part within 24-hours of notification by the most economical, yet expedient, means possible. Expedited freight delivery will be at the expense of the owner.

Warranty claims must be submitted and shall be processed in accordance with Curry Supply’s established warranty claim procedure. Curry Supply after-sales service personnel must be contacted prior to any warranty claim. A return materials authorization (RMA) may be issued to the claiming party prior to the return of warranty parts. Parts returned without prior authorization will not be recognized for warranty consideration. All damaged parts must be returned to Curry Supply freight prepaid; freight collect returns will be refused. Freight reimbursement of returned parts will be considered as part of the warranty claim.



20-Dec-24

**Warranty Repair**

Warranty service will be performed by any Curry Supply factory, Curry Supply mobile technician, Curry Supply authorized service partner, or by the affected owner. At the time of requesting warranty service, Curry Supply after-sales service personnel will verify date of delivery of the product. The owner shall be obligated to pay for any overtime labor requested of the servicing company by the owner, any field service call charges, and any towing and/or transportation charges associated with moving the equipment to the designated repair/service provider.

All obligations of Curry Supply and its service providers shall be voided if someone other than an authorized Curry Supply provider performs other than routine maintenance service without prior written or verbal approval from Curry Supply. In the case repair work is performed on a Curry Supply-manufactured product, original Curry Supply parts must be used to keep the warranty in force. The warranty may also be voided if the product is modified or altered in any way not approved, in writing, by Curry Supply.

**Warranty Limitations/Responsibilities**

This warranty covers only defective material and workmanship. It does not cover depreciation or damage caused by normal wear and tear, accident, mishap, untrained operators, or improper or unintended use. The owner has the obligation of performing routine care and maintenance duties as stated in Curry Supply's written instructions, recommendations, and specifications. Any damage resulting from owner/operator failure to perform such duties shall void the coverage of this warranty. The owner will pay the cost of labor and supplies associated with routine maintenance.

The only remedies the owner has in connection with the breach or performance of any warranty on the Curry Supply product specified are those set above. In no event will Curry Supply, or any company affiliated with Curry Supply, be liable for business interruptions, costs of delay, or for any special, indirect, incidental, or consequential costs or damages. Such costs may include, but are not limited to, loss of time, loss of revenue, loss of use, wages, salaries, commissions, lodging, meals, towing, hydraulic fluid, or any other incidental cost.

**All products purchased by Curry Supply from outside vendors shall be covered by the warranty offered by that respective manufacturer only. Curry Supply does not participate in, or obligate itself to, any such warranty.**





20-Dec-24

Curry Supply reserves the right to make changes in design or improvement upon its products without imposing upon itself the same upon its products theretofore manufactured.

This warranty will apply to all Curry Supply manufactured components/structures and upfit workmanship shipped from Curry Supply's factory. The warranty is for the use of the original owner only and is not transferable without prior written permission from Curry Supply.

Curry Supply After-Sales Contact Information:

Phone: (800) 345-2829

Email: [service@currysupply.com](mailto:service@currysupply.com)

Mailing Address: 1477 DeGol Industrial Drive, Hollidaysburg, PA 16648

THIS WARRANTY IS EXPRESSLY IN LIEU OF ANY OTHER WARRANTIES, EXPRESS OR IMPLIED, INCLUDING ANY WARRANTY OF MERCHANTABILITY OR FITNESS FOR A PARTICULAR PURPOSE. REMEDIES UNDER THIS WARRANTY ARE LIMITED TO THE PROVISION OF MATERIAL AND SERVICES, AS SPECIFIED HEREIN. CURRY SUPPLY COMPANY, IS NOT RESPONSIBLE FOR INCIDENTAL OR CONSEQUENTIAL DAMAGES.

EXCEPT AS STATED, THERE IS NO WARRANTY, EXPRESS OR IMPLIED, IN CONNECTION WITH THE DESIGN, MANUFACTURE, SALE OR USE OF THE MACHINERY, ACCESSORIES, EQUIPMENT AND PARTS SOLD BY CURRY SUPPLY CO. CURRY SUPPLY COMPANY'S LIABILITY ON ITS WARRANTY SHALL IN NO EVENT EXCEED THE COST OF THE ITEM OF SALE.



For technical help or parts, please have the serial number available and call our customer service 800.345.2829