

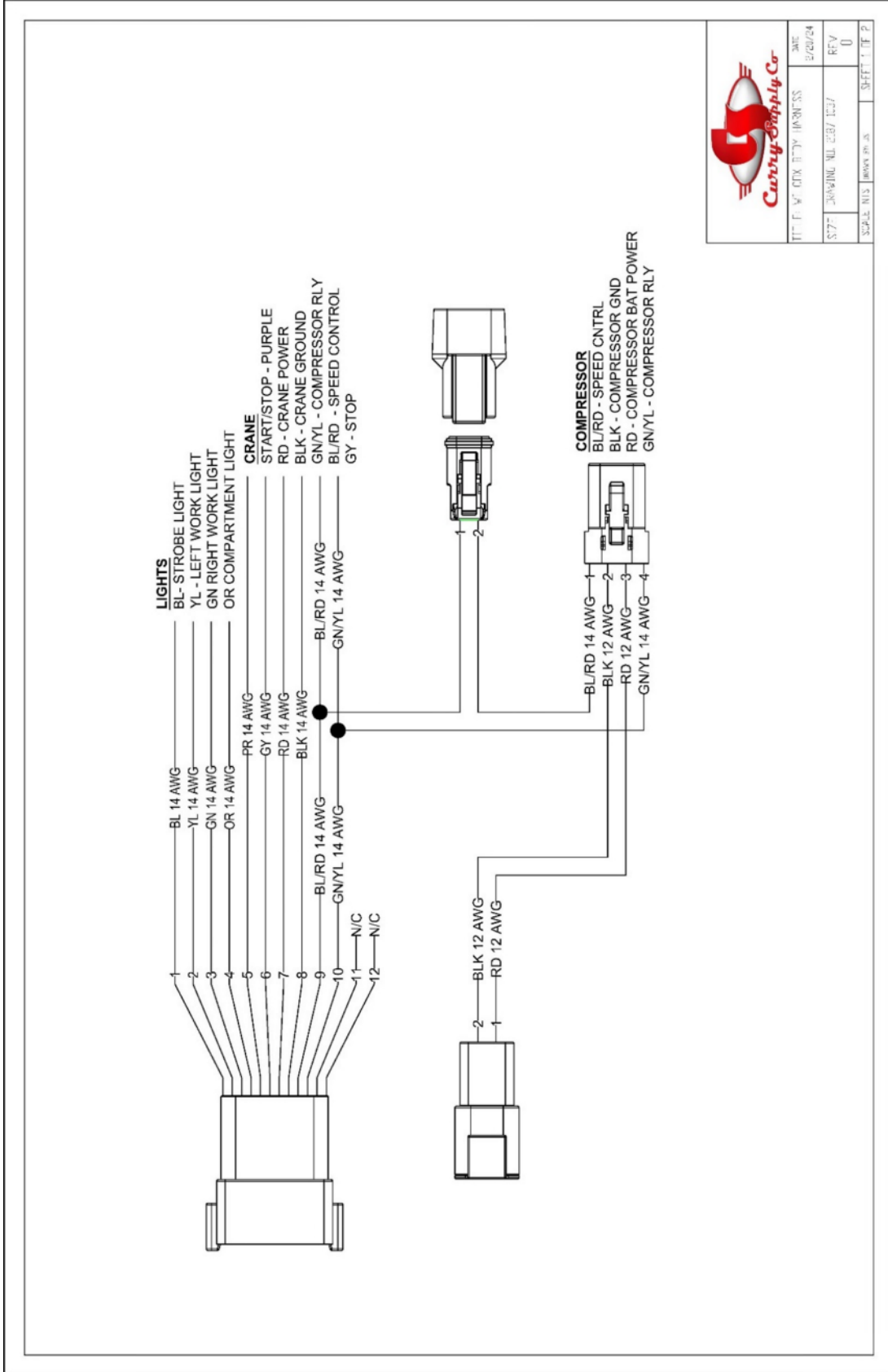

# Mechanic Trucks

## Schematics

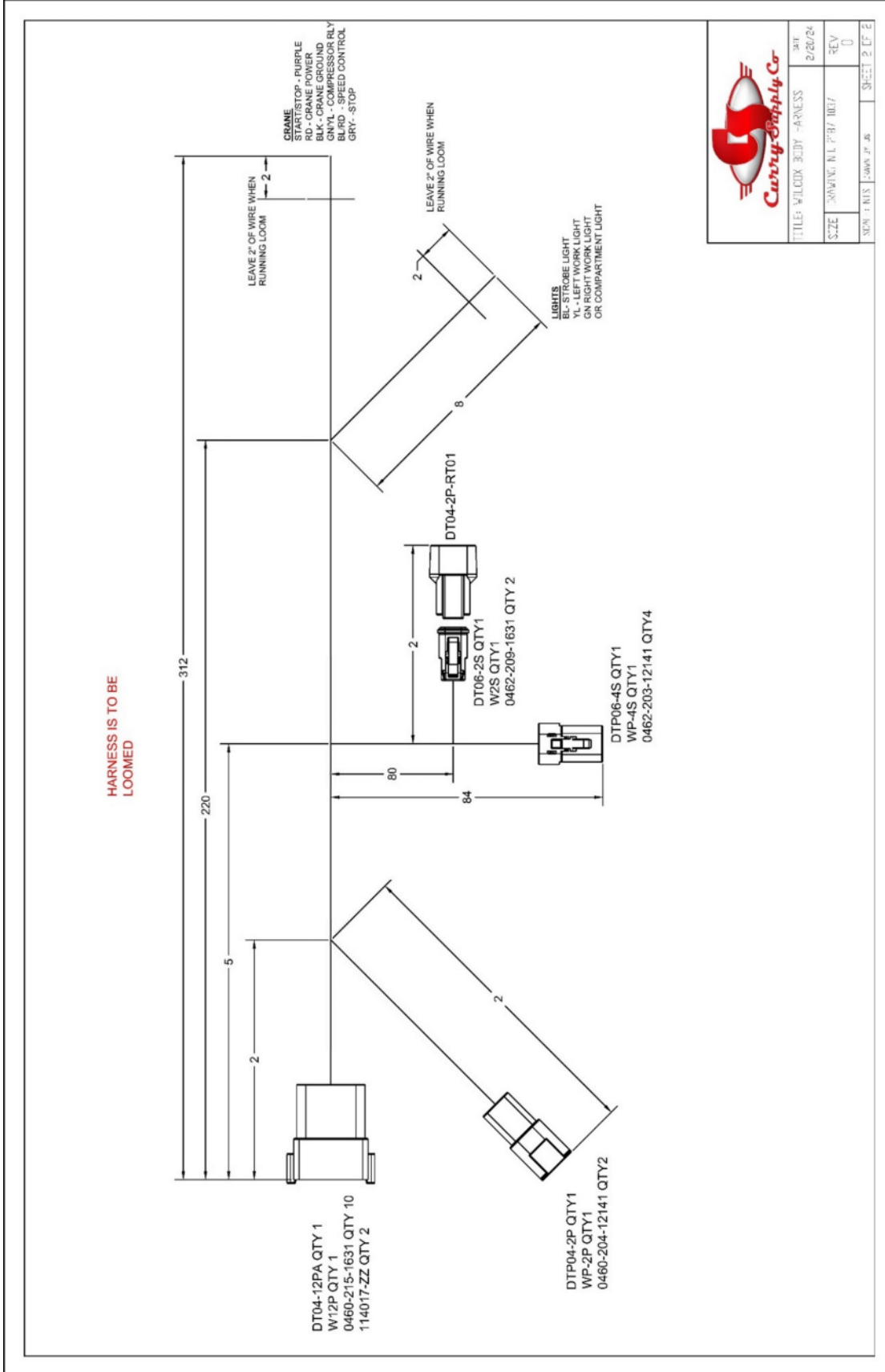
---

<a href="#">Wilcox Body Harness 2187-1037 SCH1-1</a>	<a href="#">Page 2</a>
<a href="#">Wilcox Body Harness 2187-1037 SCH1-2</a>	<a href="#">Page 3</a>
<a href="#">Peterbilt 2023 PTO Speed Control 2187-1034 SCH2-1</a>	<a href="#">Page 4</a>
<a href="#">Peterbilt 2023 PTO Speed Control 2187-1034 SCH2-2</a>	<a href="#">Page 5</a>
<a href="#">Peterbilt 2023 PTO Speed Control 2187-1034 SCH2-3</a>	<a href="#">Page 6</a>
<a href="#">Ford 2023+ Stellar Crane Wilcox Body 2187-1033 SCH3-1</a>	<a href="#">Page 7</a>
<a href="#">Ford 2023+ Stellar Crane Wilcox Body 2187-1033 SCH3-2</a>	<a href="#">Page 8</a>
<a href="#">Ford 2023+ Stellar Crane Wilcox Body 2187-1033 SCH3-3</a>	<a href="#">Page 9</a>
<a href="#">Ford 2023+ Stellar Crane Wilcox Body 2187-1033 SCH3-4</a>	<a href="#">Page 10</a>
<a href="#">Ram 2023 Stellar Crane Wilcox Body 2187-1036 SCH4-1</a>	<a href="#">Page 11</a>
<a href="#">Ram 2023 Stellar Crane Wilcox Body 2187-1036 SCH4-2</a>	<a href="#">Page 12</a>
<a href="#">Ram 2023 Stellar Crane Wilcox Body 2187-1036 SCH4-3</a>	<a href="#">Page 13</a>



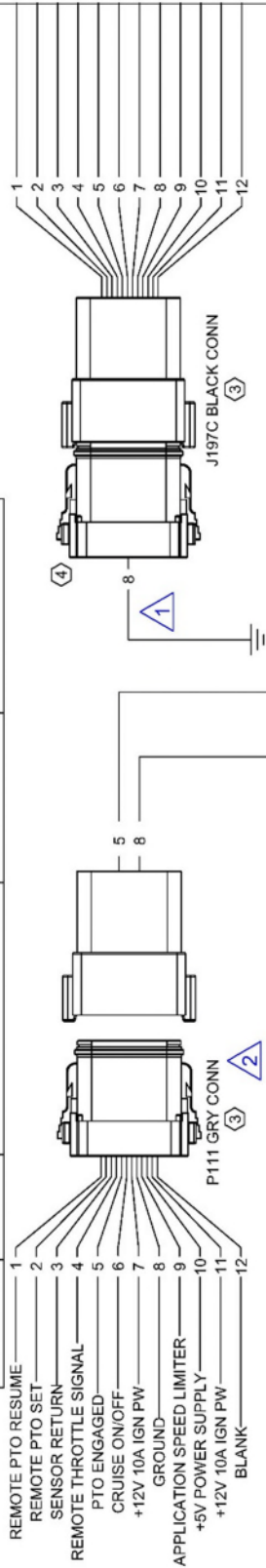



DATE	12/02/24
BY	RFV
SCALE	1:1
SHEET	1 OF 2



# REVISION TABLE

ZONE	REV	DESCRIPTION	DATE	APPROVED
	1	ADDED GROUND WIRE	02/20/2024	JS
	2	CHANGED LABEL	04/17/2024	JS



**NOTE:**

① THIS IS ASSUMING THIS IS A STELLAR BUILD WITH PDM INSTALLED  
IF THERE IS NO PDM ADD DIODE TO SPEED CONTROL

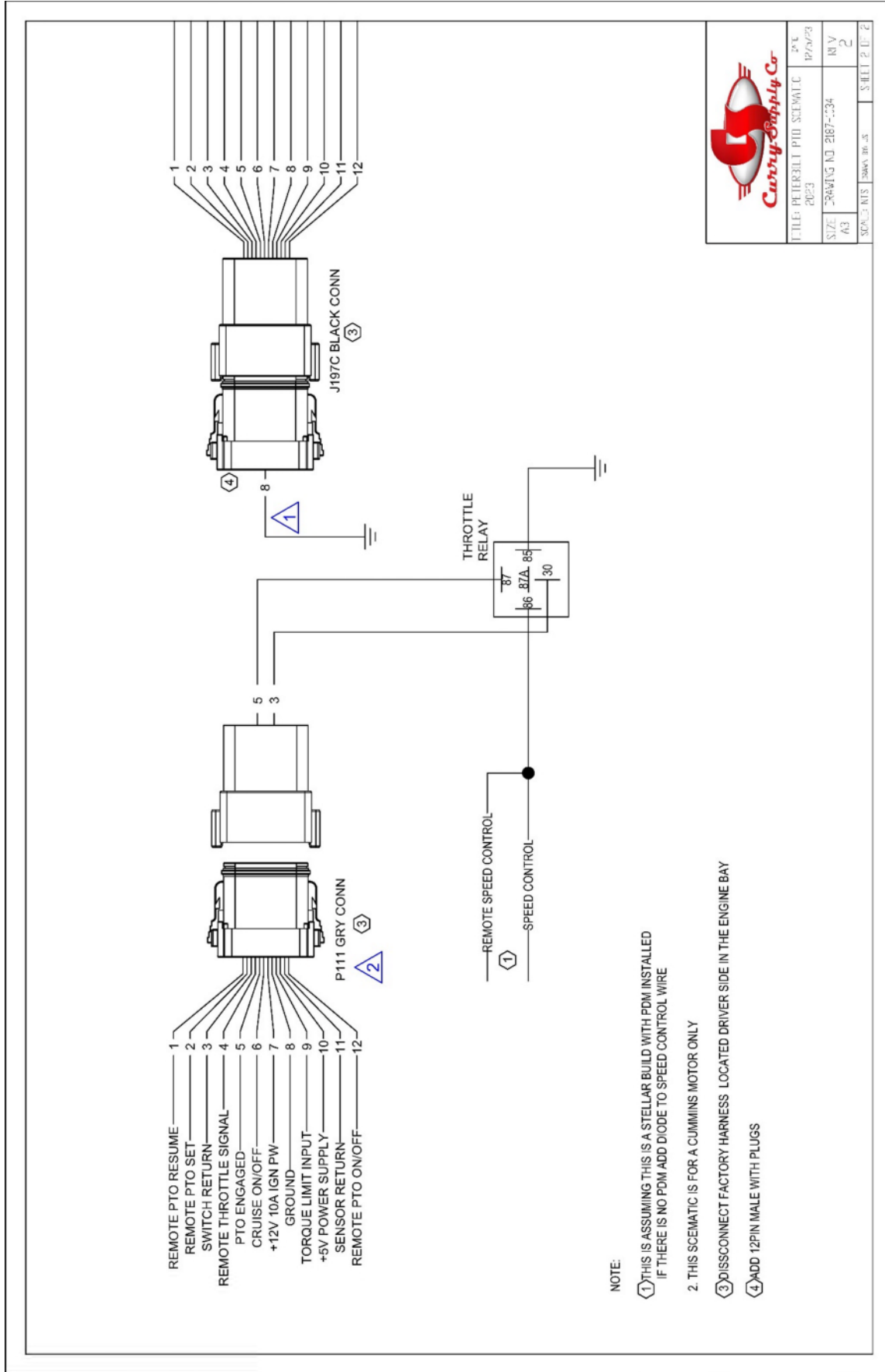
2. THIS SCHEMATIC IS FOR A MX MOTOR ONLY

③ DISCONNECT FACTORY HARNESS LOCATED DRIVER SIDE IN THE ENGINE BAY

④ ADD 12PIN MALE WITH PLUGS




TITLE	PTO THROTTLE SCHEMATIC	DATE	12/2/23
SCALE	AS SHOWN	REV	1
SCALE	AS SHOWN	DATE	11/12/24



		DATE	11/20/23
		FILE: PTO Schematic	2023
SIZE	A3	DRAWING NO	2187-034
REV	2	REV	1
SCALE	1:1	SHEET	2 OF 2



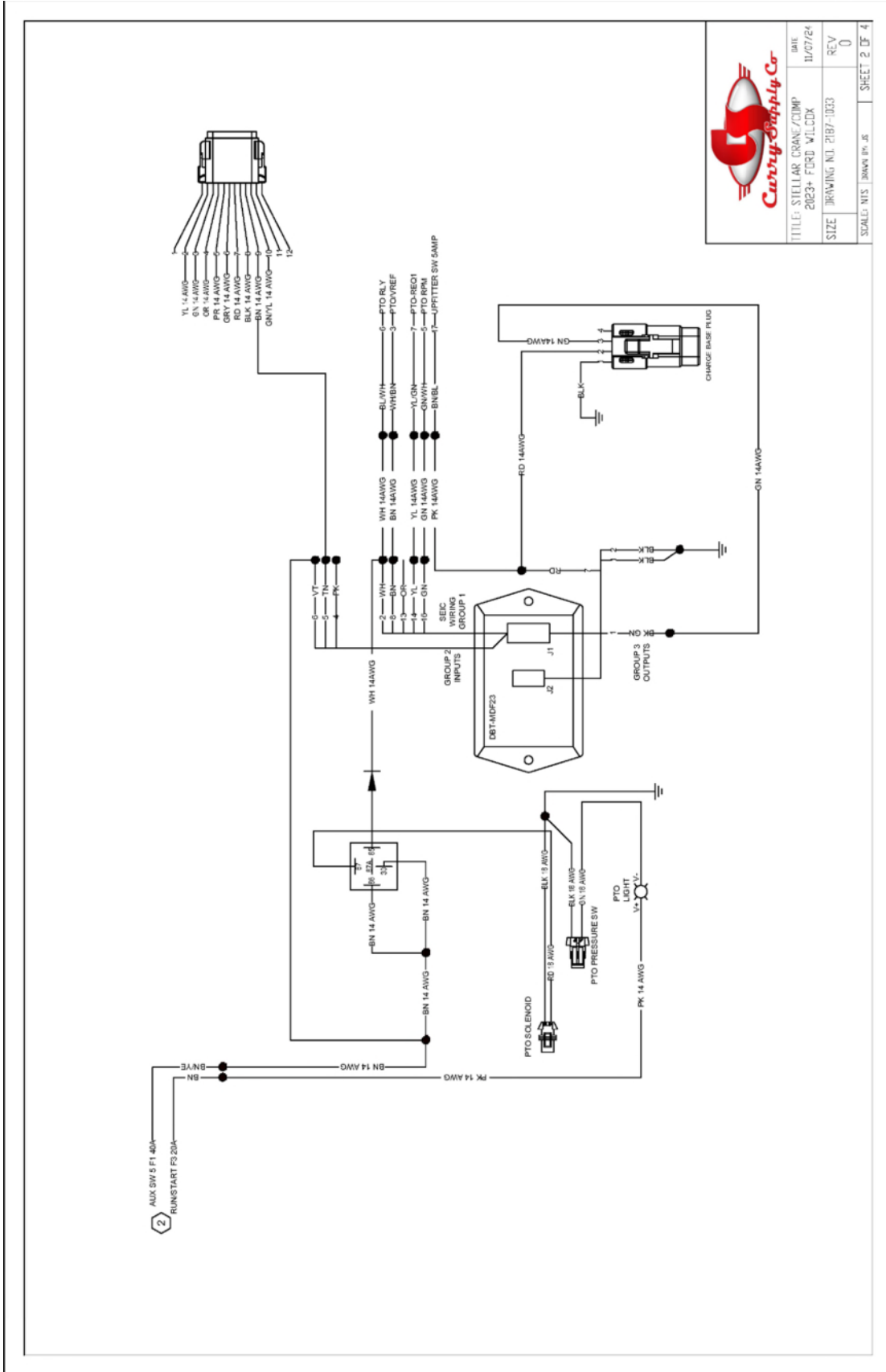
ARROW IS  
POINTING TO P111  
CONNECTOR  
LOCATED DRIVER  
SIDE ENGINE BAY

	
TITLE	PERFORM P111 SCHEMATIC
DATE	12/2/23
SIZE	A3
DRAWING NO.	PIB7-1034
SCALE	AS SHOWN
SHEET NO.	2 OF 2

- NOTES:
- 1 LOCATION OF SEC WIRES ARE PASSENGERSIDE KICK PANEL
  - 2 LOCATION OF OFFITTER SWITCH WIRES AND RESTART IGNITION IS LOCATED PASSENGER SIDE ENGINE COMPARTMENT
  - 3 START STOP WIRES ARE LOCATED PASSENGERSIDE KICK PANEL REMOVE JX CONNECTOR AND LOCATE PIN 3 (STOP) AND BREAK THE CONNECTION AND TIE EACH SIDE TO THE RLY SHOWN RLY SHALL BE LOCATED PASSENGERSIDE KICK PANEL
  - 4 REMOVE JX CONNECTOR AND LOCATE PIN 4 (START) SPLICE PR 14AWG SPLICE PR 14AWG DIRECTLY TO PIN 4 (START)
  - 5 USE BREAKER THAT COMES WITH COMPRESSOR



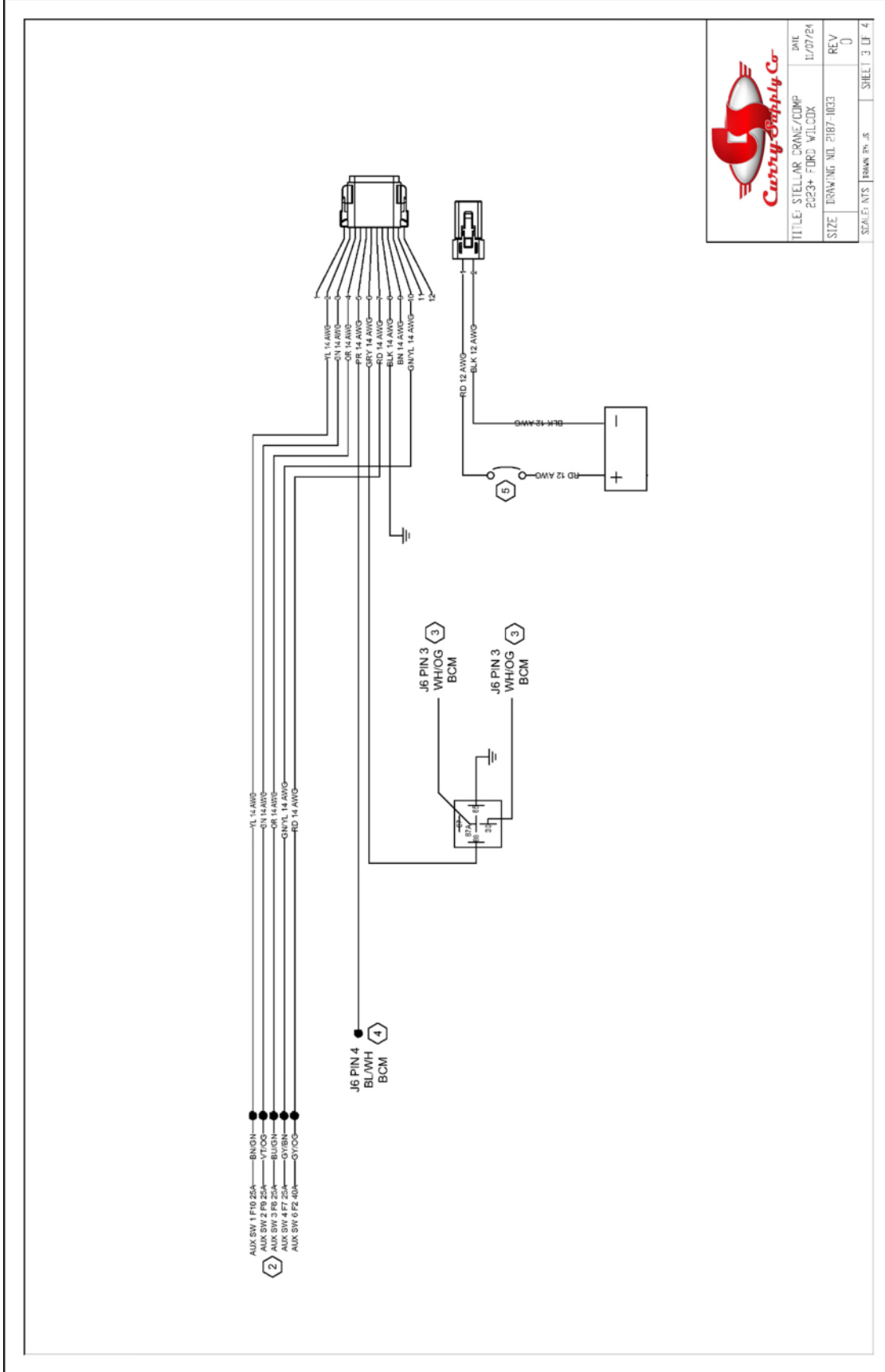
TITLE	STELLAR CRANE/COMP 2023+ FORD WILCOX	DATE	11/01/24
SIZE	DRAWING NO. 2187-1033	REV	0
SCALE	N.T.S.	DRAWN BY	JAS
		SHEET	1 OF 4



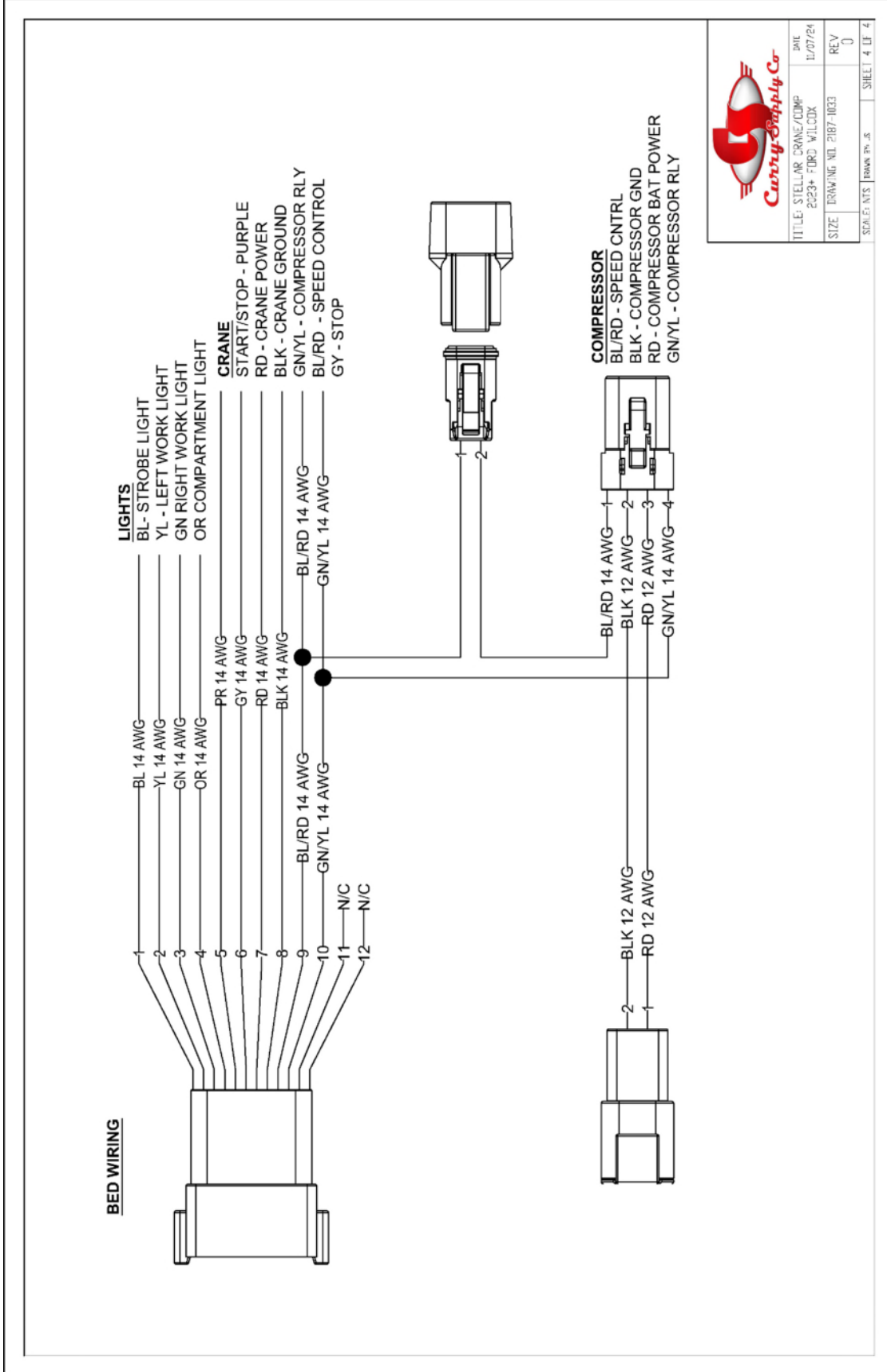
**Curtis Supply Co.**

TITLE: STELLAR CRANE/CLAMP	DATE: 11/07/24
2023- FORD VILCOX	REV: 0
SIZE: DRAWING NO. 2187-1033	
SCALE: NTS	SHEET 2 OF 4






TITLE: STELLAR CRANE/COMP 2023+ FORD WILDCAT	DATE 11/07/24
SIZE: DRAWING NO: 2187-1003	REV: 0
SCALE: NTS	DRAWN BY: JS
	SHEET 3 OF 4




**Cunty Supply Co.**

TITLE: STELLAR CRANE/CDMP 2023+ FORD WILDCAT	DATE: 11/07/24
SIZE: DRAWING NO. 2187-1003	REV: 0
SCALE: NTS	DRAWN BY: JS
	SHEET: 4 OF 4

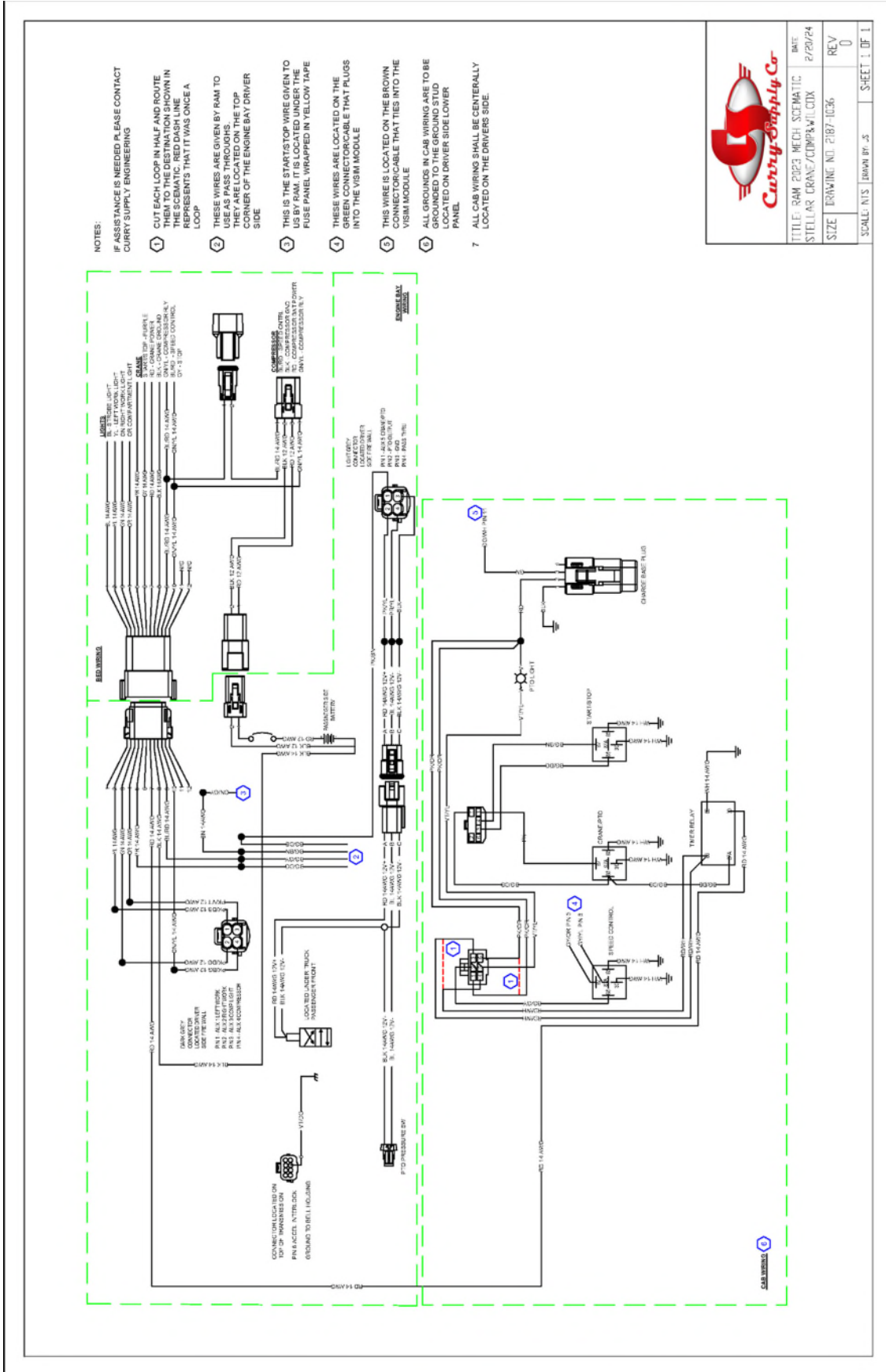
REVISION TABLE				
ZONE	REV	DESCRIPTION	DATE	APPROVED
	1	SEE NOTE B	07/03/2024	JS

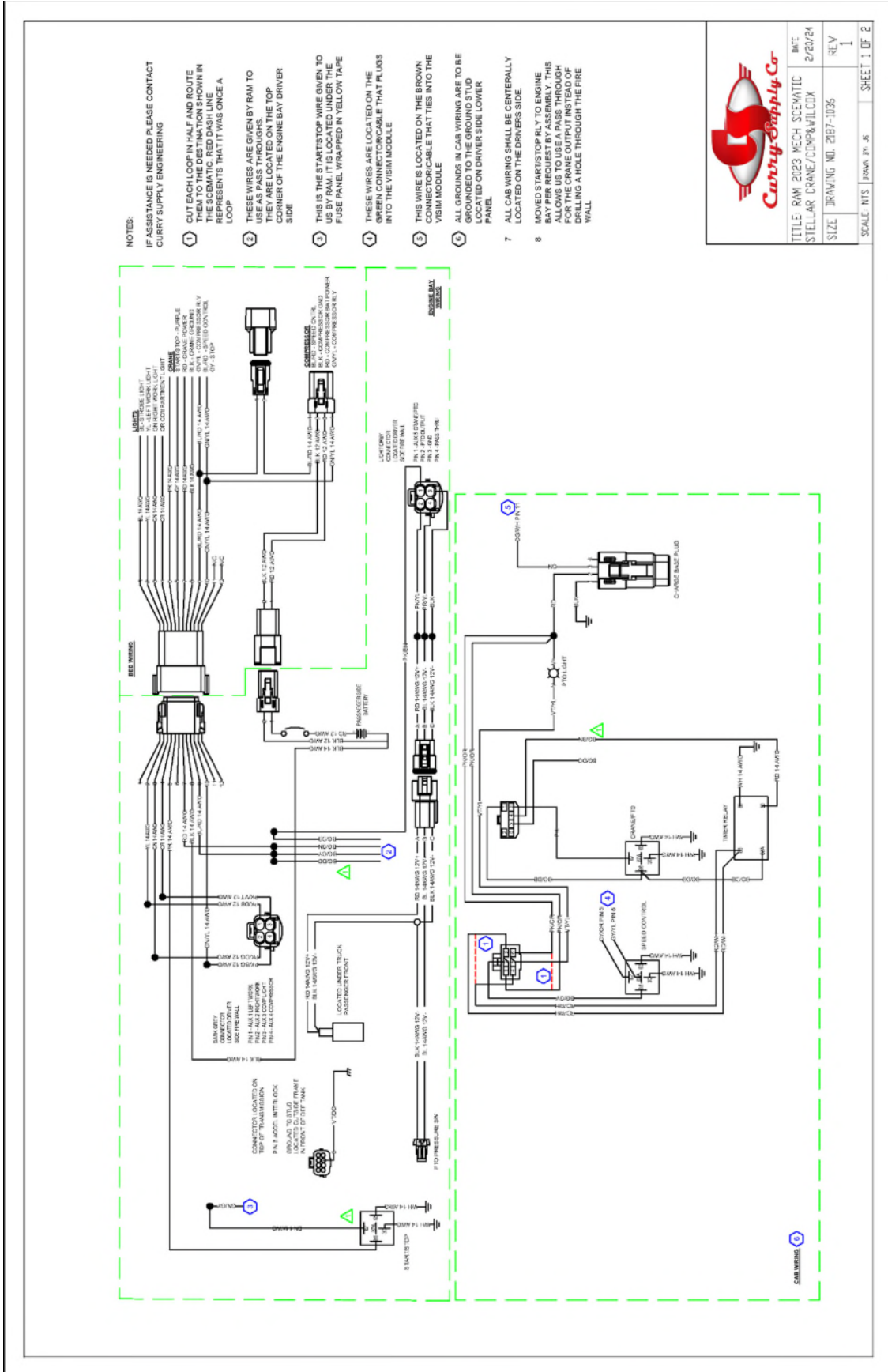


TITLE: RAM 2023 MECH SCHEMATIC  
STELLAR CRANE/COMP&ILCOX

DATE	2/29/24
SIZE	DRAWING NO. 2187-1036
REV	1

SCALE: NTS | DRAWN BY: JS | SHEET 1 OF 2





**Curry Supply Co.**

TITLE	RAW 2023 MECH SCHEMATIC	DATE	2/20/24
STELLAR CRANE/COMP&ILCOX		REV	1
SIZE	DRIVING NO. 2187-1036		
SCALE	N/A	DRAW BY: JS	SHEET 1 OF 2