

# Off Road Fuel Lube Truck

## Schematics

---

<a href="#">2187-1045 Coleman Fuel Lube SCH1-1</a>	<a href="#">Page 2</a>
<a href="#">2187-1045 Coleman Fuel Lube SCH1-2</a>	<a href="#">Page 3</a>
<a href="#">2187-1045 Coleman Fuel Lube SCH1-3</a>	<a href="#">Page 4</a>
<a href="#">2187-1045 Coleman Fuel Lube SCH1-4</a>	<a href="#">Page 5</a>
<a href="#">2187-1045 Coleman Fuel Lube SCH1-5</a>	<a href="#">Page 6</a>
<a href="#">2187-1045 Coleman Fuel Lube SCH1-6</a>	<a href="#">Page 7</a>
<a href="#">2187-1045 Coleman Fuel Lube SCH1-7</a>	<a href="#">Page 8</a>
<a href="#">2187-1045 Coleman Fuel Lube SCH1-8</a>	<a href="#">Page 9</a>
<a href="#">2187-1045 Coleman Fuel Lube SCH1-9</a>	<a href="#">Page 10</a>
<a href="#">2187-1045 Coleman Fuel Lube SCH1-10</a>	<a href="#">Page 11</a>
<a href="#">2187-1045 Coleman Fuel Lube SCH1-11</a>	<a href="#">Page 12</a>
<a href="#">2187-1045 Coleman Fuel Lube SCH1-12</a>	<a href="#">Page 13</a>
<a href="#">2187-1045 Coleman Fuel Lube SCH1-13</a>	<a href="#">Page 14</a>

NOTES:

1) END UPFITTER NEEDS TO RUN WIRES TO THE CAB AND INSTALL A SWITCH.

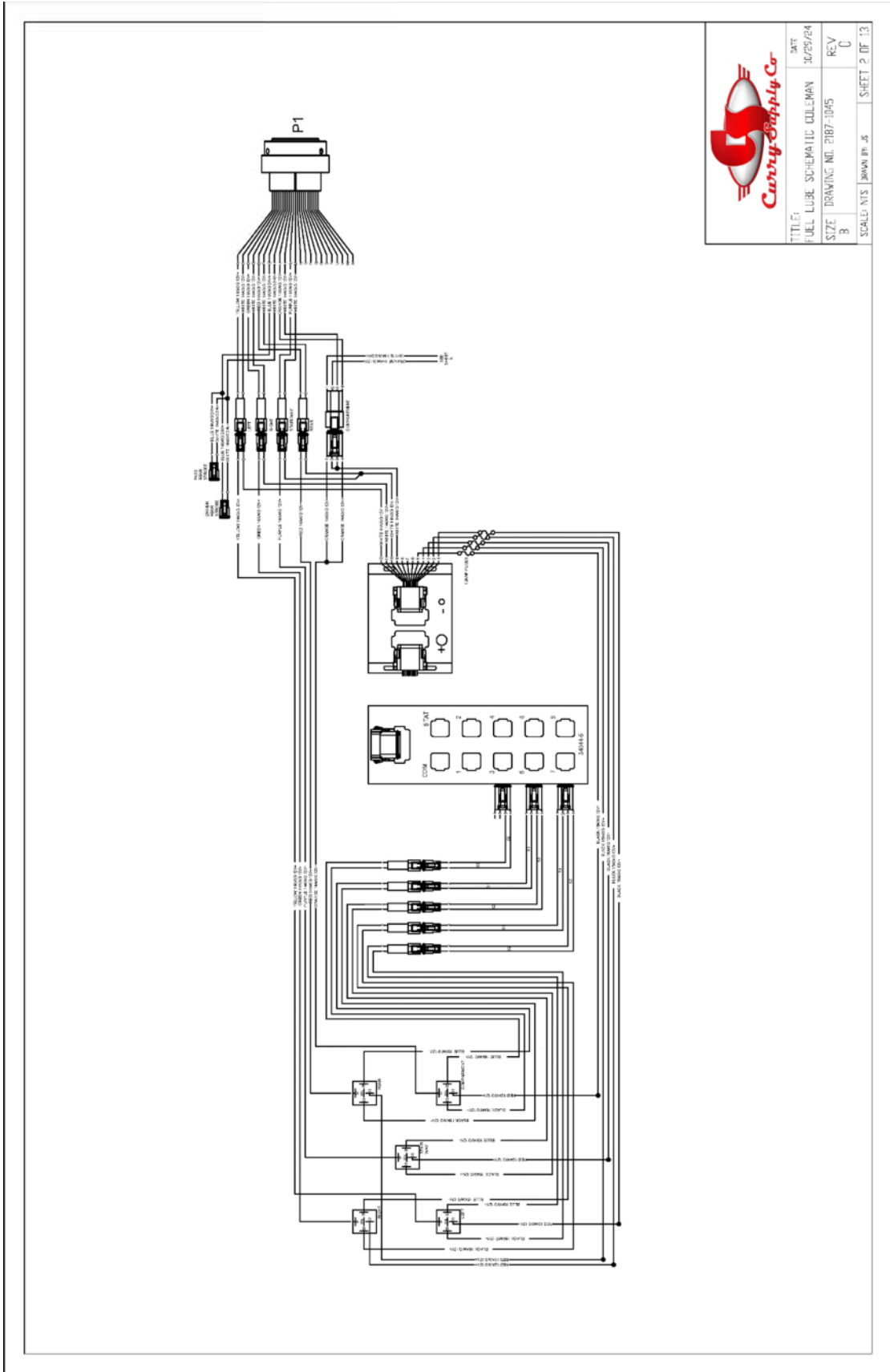
2) IGN WAS SPLICED OFF PIN G TO PROVIDED IGN TO OUR SOLENOID TO POWER ON CURRY SYSTEM. SPLICE LOCATION IS LOCATED AT THE CONTROL PANEL.

SHEET REFERENCE:

- SHEET 1 - NOTES SHEET
- SHEET 2 - ELECTRICAL PANEL WIRING FOR LIGHTS
- SHEET 3 - EXTERIOR WIRING FOR LIGHTS
- SHEET 4 - ELECTRICAL PANEL WIRING FOR FILL/EMPTY LIGHTS AND FLOW LINE MONITOR
- SHEET 5 - LEVEL SENSOR WIRING
- SHEET 6 - ELECTRICAL PANEL WIRING FOR PRODUCTS / GREASE / HYD COOLER
- SHEET 7 - EXTERIOR WIRING FOR PRODUCTS / GREASE / HYD COOLER
- SHEET 8 - ELECTRICAL PANEL WIRING FOR COMPRESSOR / W/O ANTI/DEF / COMPT LIGHTS AND IGN SIGNAL FROM CONTROL PANEL
- SHEET 9 - ELECTRICAL PANEL WIRING FOR COMPT HEATING WIRING
- SHEET 10 - IGN WIRING FOR ELECTRICAL PANEL
- SHEET 11 - ELECTRICAL PANEL WIRING FOR CAN BUS/DATA PANEL PRODUCT
- SHEET 12 - HOSE REEL WIRING
- SHEET 13 - HATZ MOTOR WIRING



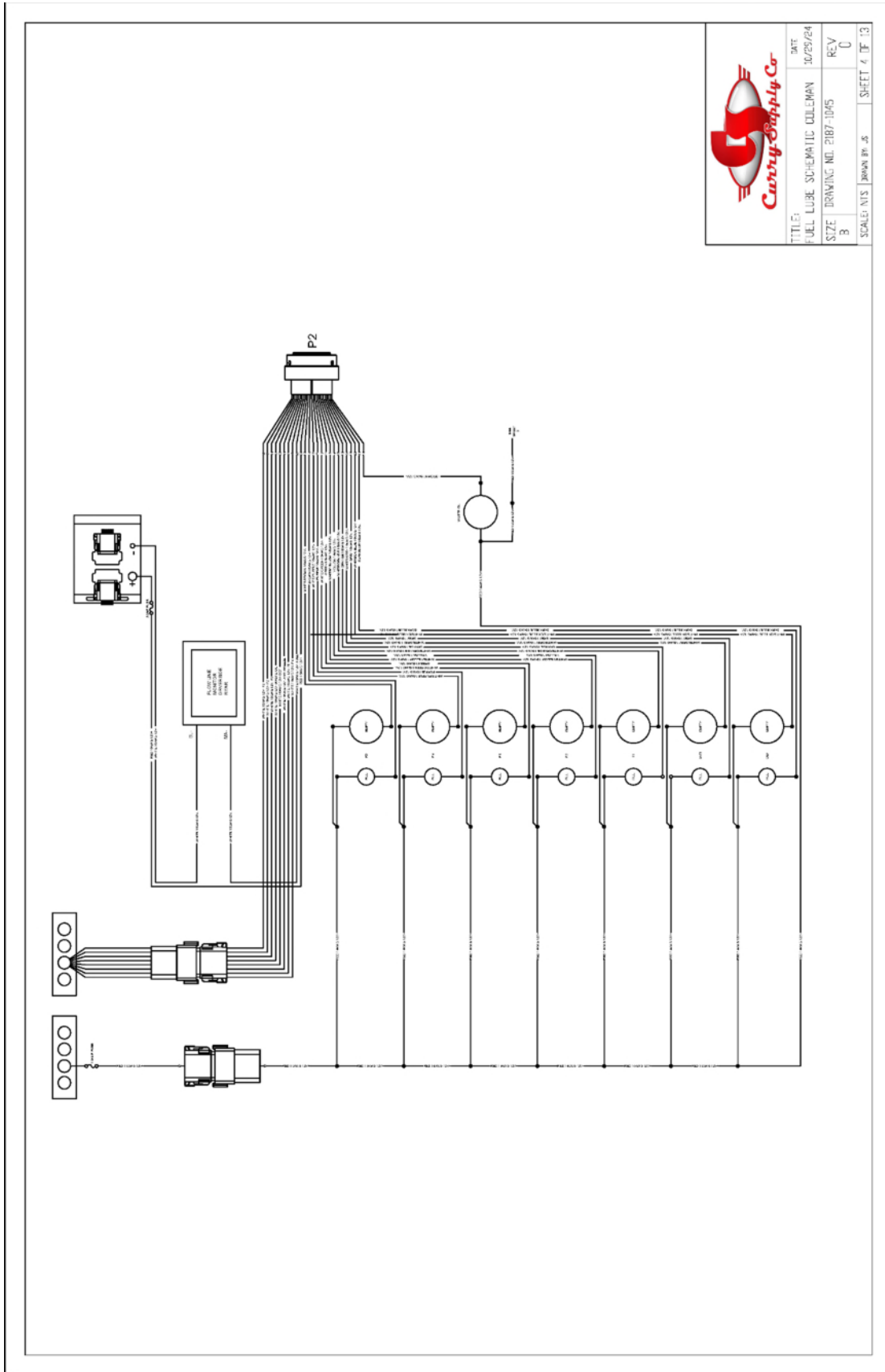
TITLE:	DATE:
FUEL LUBE SCHEMATIC COLEMAN	30/29/24
SIZE:	REV:
B	0
SCALE: NTS	DRAWN BY: JS
	SHEET 1 OF 13



**Cushy Supply Co.**

TITLE:	DATE:
FUEL LUBE SCHEMATIC COLEMAN	10/29/24
SIZE:	REV:
8	0
SCALE: NTS	DRAWN BY: JS
	SHEET 2 OF 13

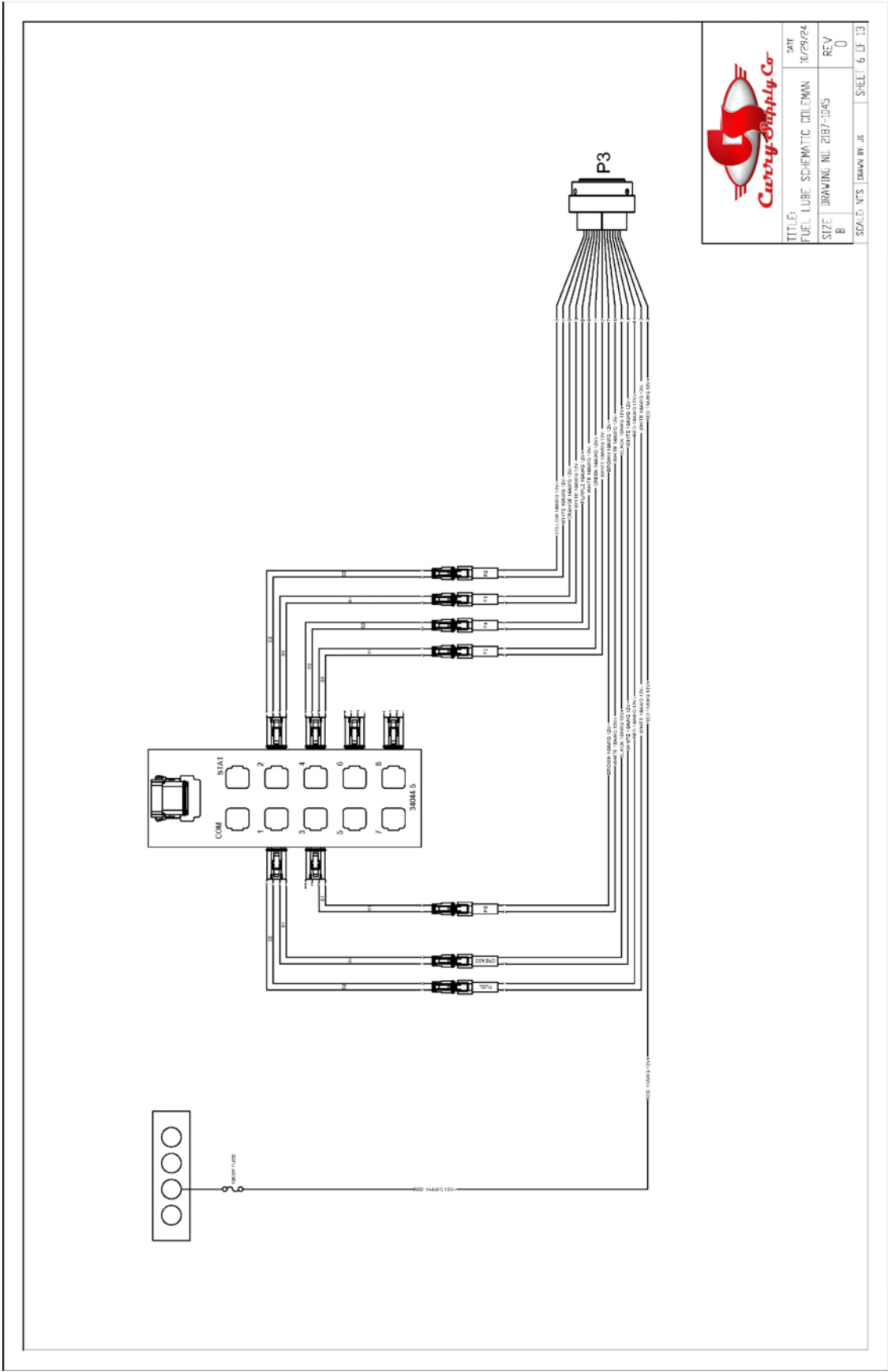




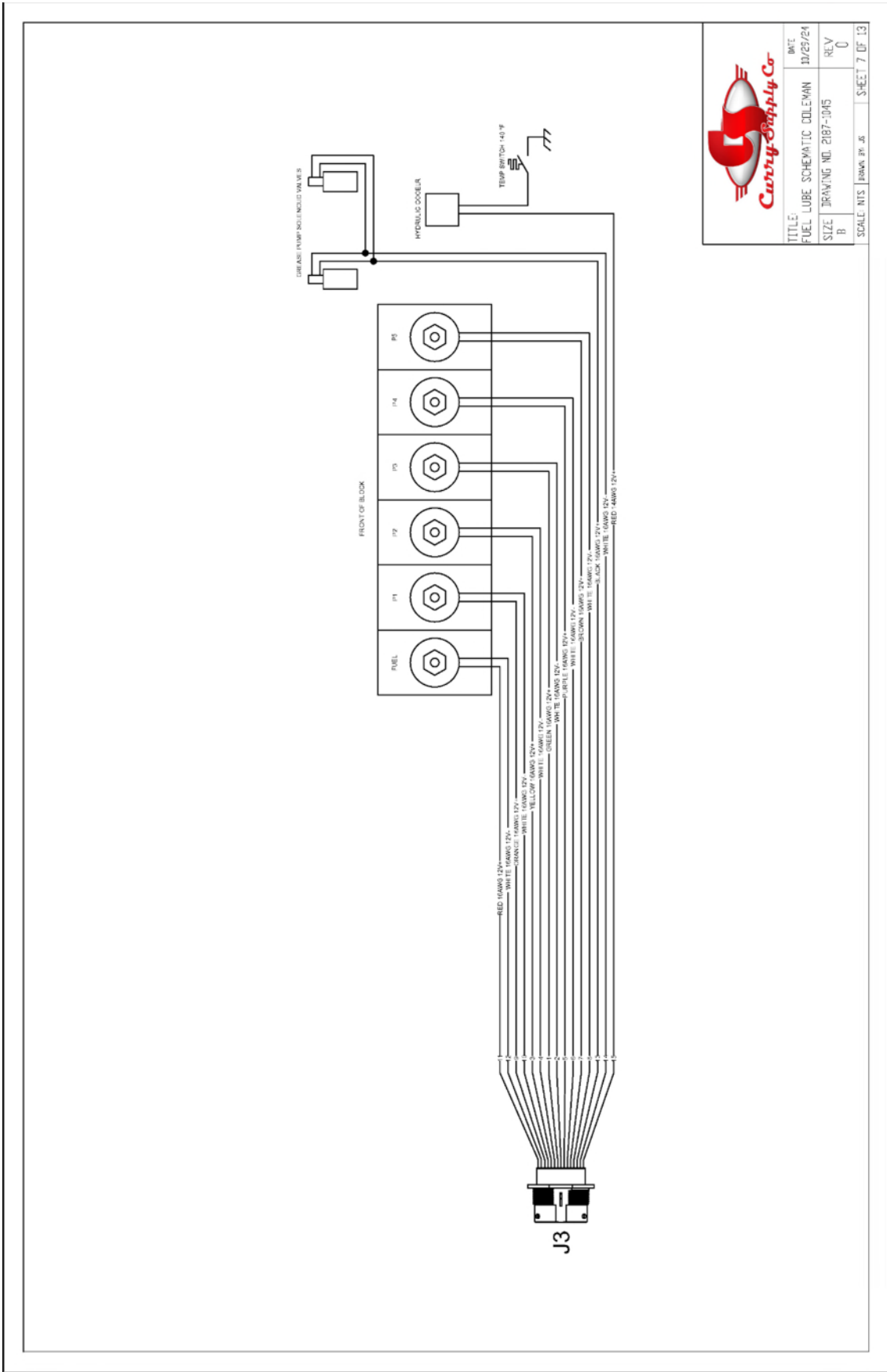
**Cash's Supply Co.**

TITLE:	DATE:
FUEL LUBE SCHEMATIC CULLEMAN	10/29/24
SIZE: DRAWING NO. 2187-1045	REV: 0
SCALE: NTS	DRAWN BY: JS
SHEET 4 OF 13	





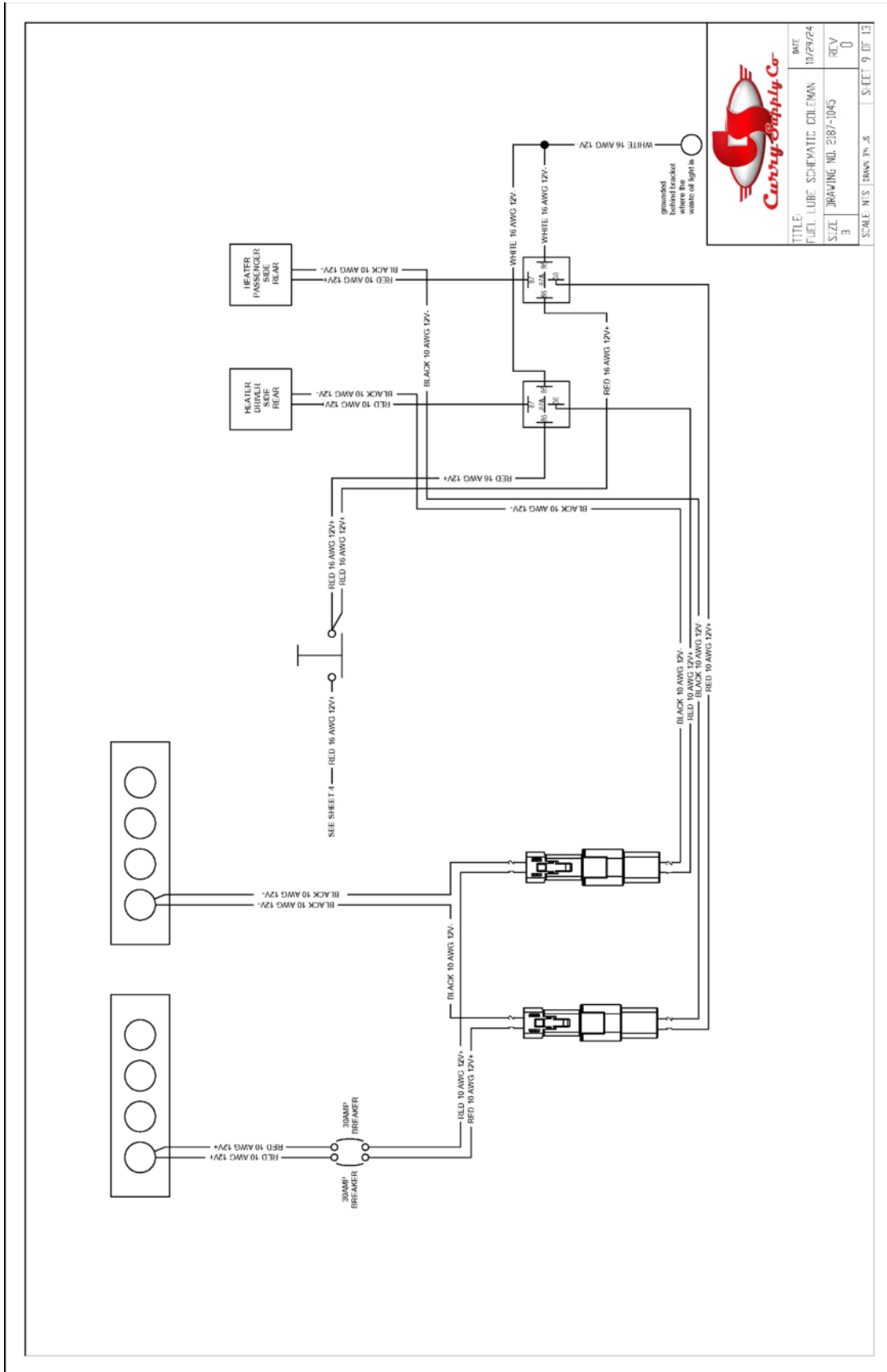

TITLE:	FUEL, LUBE, SCHEMATIC	DATE	10/29/24
SIZE:	B	DRAWING NO:	2187-1045
SCALE:	N/S	DESIGNED BY:	JAS
		CHECKED BY:	JAS
		DATE:	10/29/24
		SHEET:	6 OF 13




TITLE:	DATE:
FUEL LUBE SCHEMATIC COLEMAN	10/29/24
SIZE: DRAWING NO. 2187-1045	REV:
B	0
SCALE: NTS	SHEET 7 OF 13

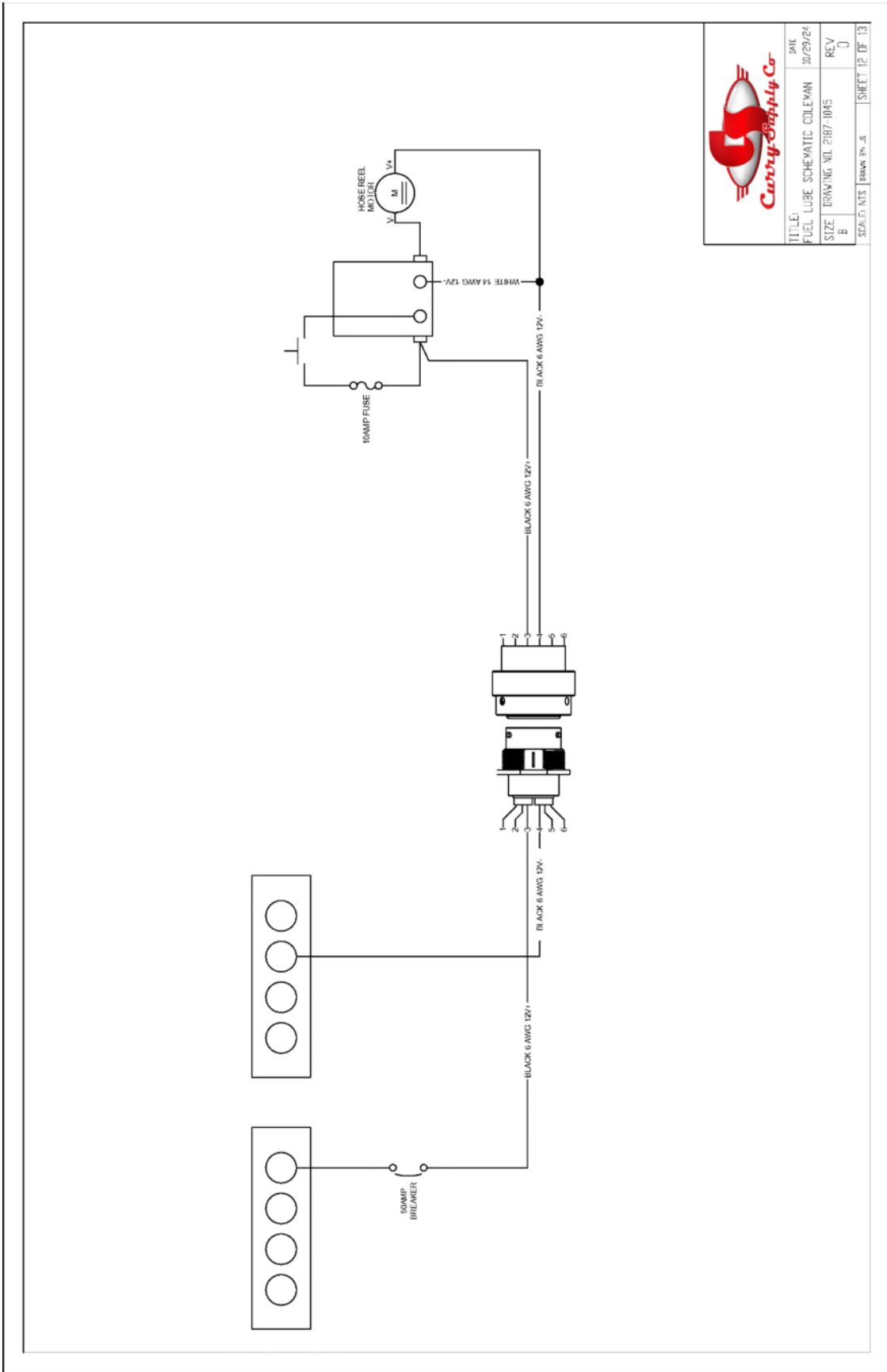




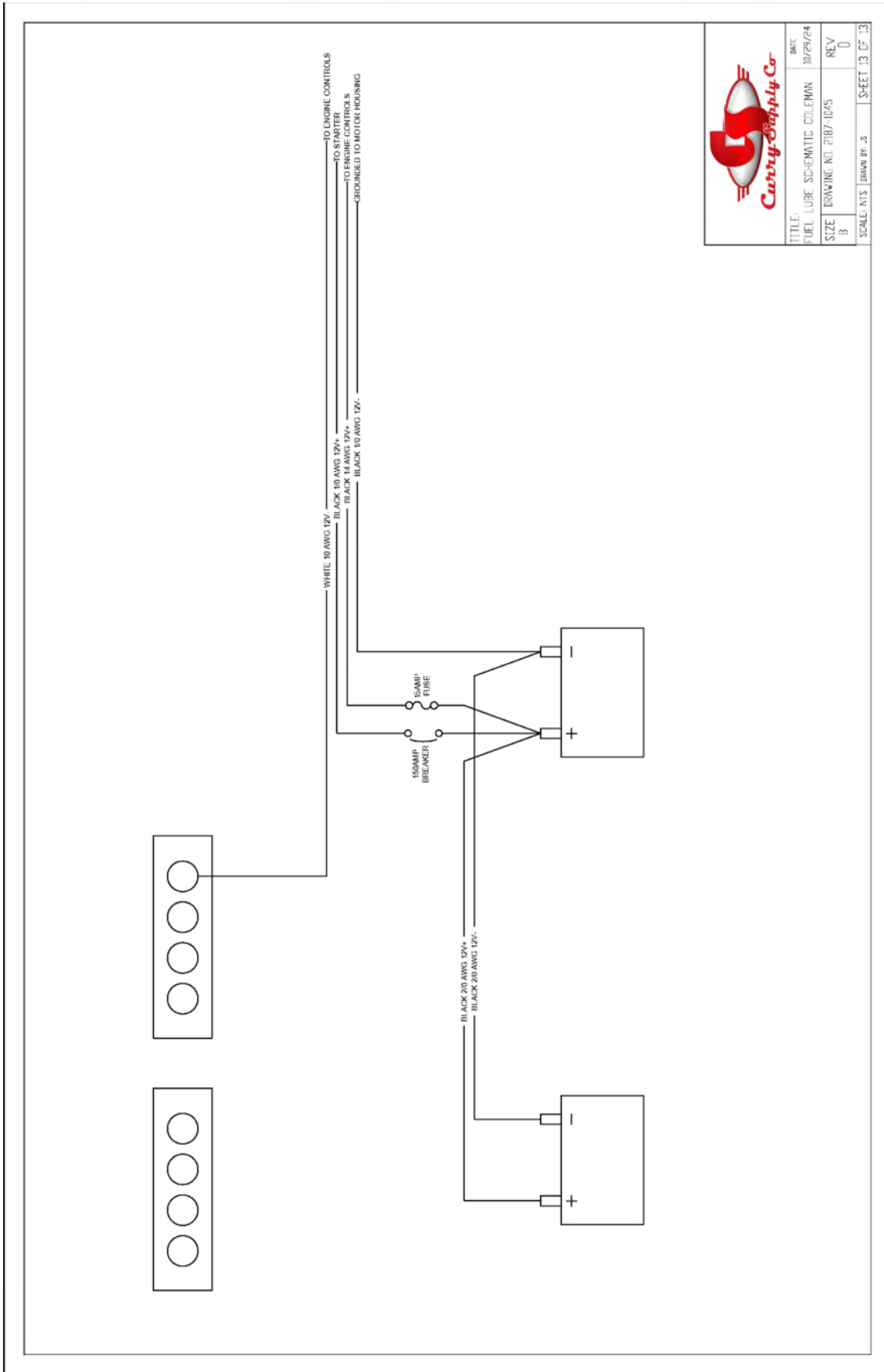









TITLE:	DWG
FUEL LUBE SCHEMATIC COLEMAN	10/29/24
SIZE	REV
B	0
SCALE: NTS	SHEET 12 OF 13




TITLE:	DATE:
FUEL / LUBE SCHEMATIC: COLEMAN	10/29/24
SIZE: DRAWING NO: 2187-1045	REV: 0
B	0
SCALE: NTS	DRAWN BY: JS
	SHEET 13 OF 13